

11E/13 Pugwash

Hg
LEGEND

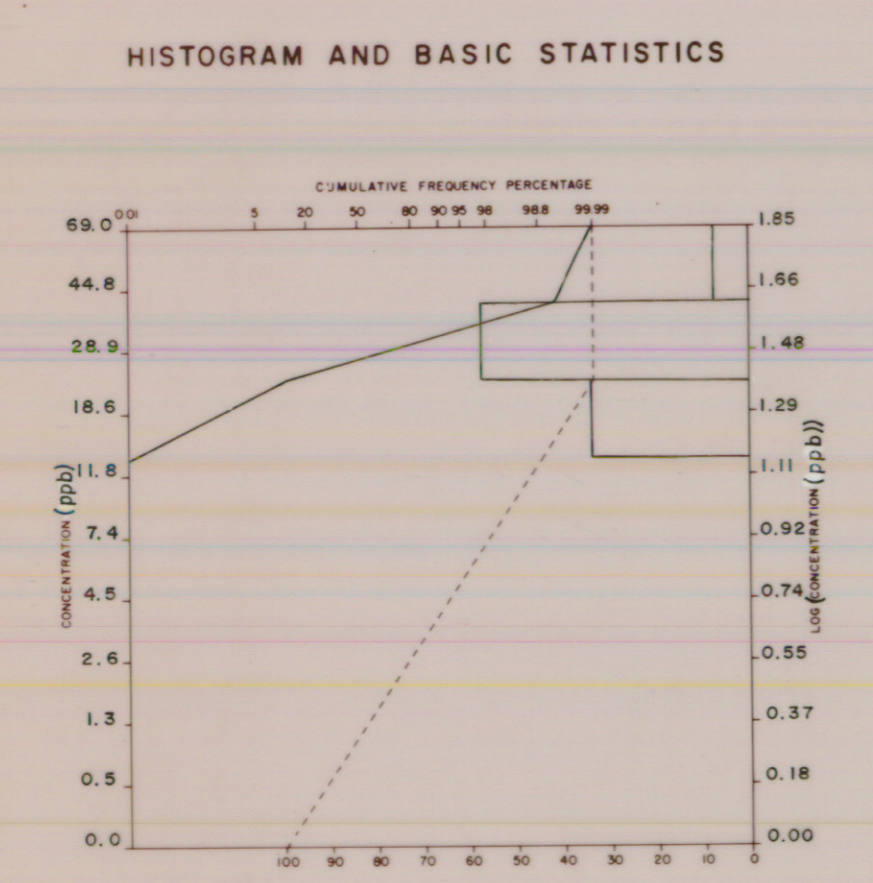
Sample number e.g. 82-1-025
year sequential number
location group

Analytical value in p.p.m. (unless otherwise specified) ... e.g. 106

Geochemical Sample Medium

- Stream sediment, sieved
- Stream sediment, unsieved
- Lake sediment
- Heavy mineral /panned concentrate
- Soil
- Rock
- Peat
- Till
- Other

Note: Two (2) sample numbers per sample location indicates duplicate sample site... e.g. 82-1-025,026
N.R. = No Results



Sample collection and Geochemistry: P.J. Rogers and M.A. MacDonald
Analyses: Chemex Laboratories Ltd., North Vancouver, B.C.
Sample digestion: Hot HNO₃-HCl Extraction
Analytical technique: Flameless AAS
Cartography: P. A. Lombard

TABLIER D'ASSEMBLAGE DU SYSTÈME NATIONAL DE RÉFÉRENCE CARTOGRAPHIQUE

I	L	L
21 H/16	11 E/13	11 E/14
21 H/9	11 E/12	11 E/11

INDEX TO ADJOINING MAPS OF THE NATIONAL TOPOGRAPHIC SYSTEM



PUGWASH
CUMBERLAND MUNICIPALITY - CUMBERLAND COUNTY
NOVA SCOTIA
Scale 1:50 000 Echelle

CONVERSION SCALE FOR ELEVATIONS
Mètres 0 20 40 60 80 100
Feet 100 200 300 400 500 600 700 800 900 1000

ECHELLE DE CONVERSION DES ALTITUDES
Mètres 0 20 40 60 80 100
Pieds 100 200 300 400 500 600 700 800 900 1000

© 1982, Her Majesty the Queen in Right of Canada, Department of Energy, Mines and Resources.

OPEN FILE
DOSSIER PUBLIC
1245
Geological
Survey
Commission
Géologique
Ottawa

CONTRIBUTION TO CANADA - NOVA SCOTIA
CO-OPERATIVE MINERAL PROGRAM 1981-84

OPEN FILE
OFM 86-12
Nova Scotia
Department of
Mines and Energy