



Pb

LEGEND

Sample number e.g. 82-1-025
Analytical value in p.p.m. (unless otherwise specified) .. e.g. 106

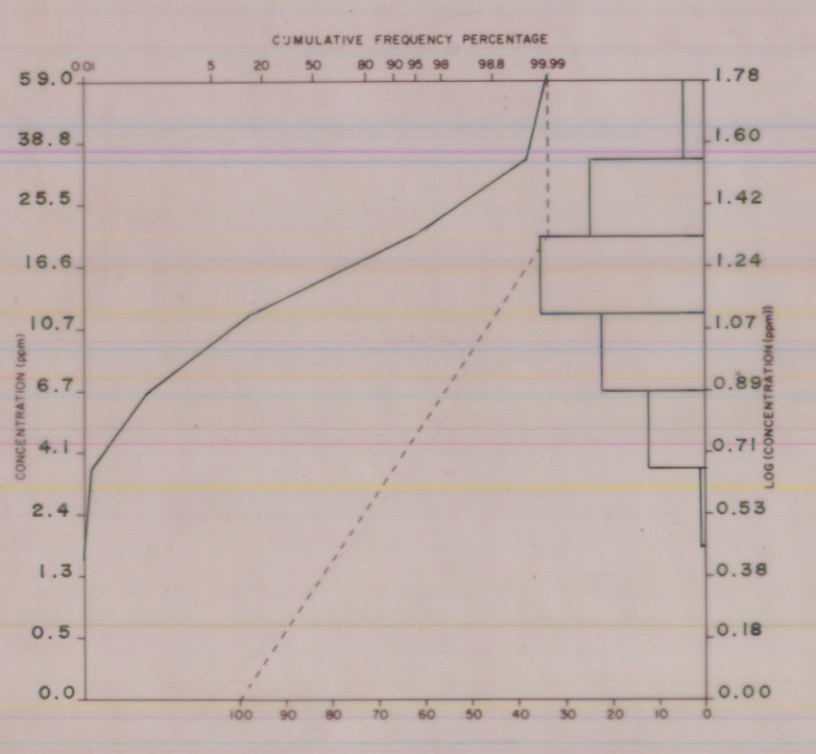
Geochemical Sample Medium

- Stream sediment, sieved
- Stream sediment, unsieved
- Lake sediment
- Heavy mineral / panned concentrate
- Soil
- Rock
- Peat
- Till
- Other

Note: Two (2) sample numbers per sample location indicates duplicate sample site... e.g. 82-1-025, 026

N. R. = No Results

HISTOGRAM AND BASIC STATISTICS



Note: Only data within this 1:50,000 sheet is included.

Average: 17.64
Number of samples: 258
Standard deviation: 0.59
Range: 3.00 - 60.00
Detection limit: 2 ppm

Sample collection and Geochemistry: P.J. Rogers and M.A. MacDonald
Analyses: Chemex Laboratories Ltd., North Vancouver, B.C.
Sample digestion: Hot HNO₃-HCl Extraction
Analytical technique: Air - Acetylene AAS
Cartography: P.A. Lombard

TABLEAU D'ASSEMBLAGE DU SYSTÈME NATIONAL DE RÉFÉRENCE CARTOGRAPHIQUE

21 H/5	21 H/6	11 E/13
21 H/10	21 H/9	11 E/12
21 H/7	21 H/8	11 E/5

INDEX TO ADJOINING MAPS OF THE NATIONAL TOPOGRAPHIC SYSTEM

Produced by the SURVEYS AND MAPPING BRANCH
DEPARTMENT OF ENERGY MINES AND RESOURCES
Geological Survey of Canada
Map published in 1982. Publication 1582
© 1982 Her Majesty the Queen in Right of Canada
Department of Energy Mines and Resources

Scale 1:50,000 Échelle

Meters	0	1000	2000	3000	4000
Yards	0	1000	2000	3000	4000

SPRINGHILL
NOVA SCOTIA - NEW BRUNSWICK

CONVERSION SCALE FOR ELEVATIONS

Meters	0	100	200	300	400	500	600	700	800	900	1000
Feet	0	300	600	900	1200	1500	1800	2100	2400	2700	3000

ÉCHELLE DE CONVERSION DES ALTITUDES

Mètres	0	100	200	300	400	500	600	700	800	900	1000
Pieds	0	300	600	900	1200	1500	1800	2100	2400	2700	3000

Échelle par la DIRECTION DES LÈVES ET DE LA CARTOGRAPHIE
MINISTÈRE DE L'ÉNERGIE, DES MINES ET DES RESSOURCES
Rue à l'est de la rue de la Photographie aérienne près de 1075, Westmount
Québec, Québec H3T 1K6
© 1982 La Reine en Son Nom
Ministère de l'Énergie, des Mines et des Ressources

OPEN FILE
DOSSIER PUBLIC
1251
Geological
Survey
Commission
Géologique
Ottawa

OPEN FILE
OFM 86-18
Nova Scotia
Department of
Mines and Energy