



F-w
LEGEND

Sample number e.g. 82-1-025
 year sequential number
 location group

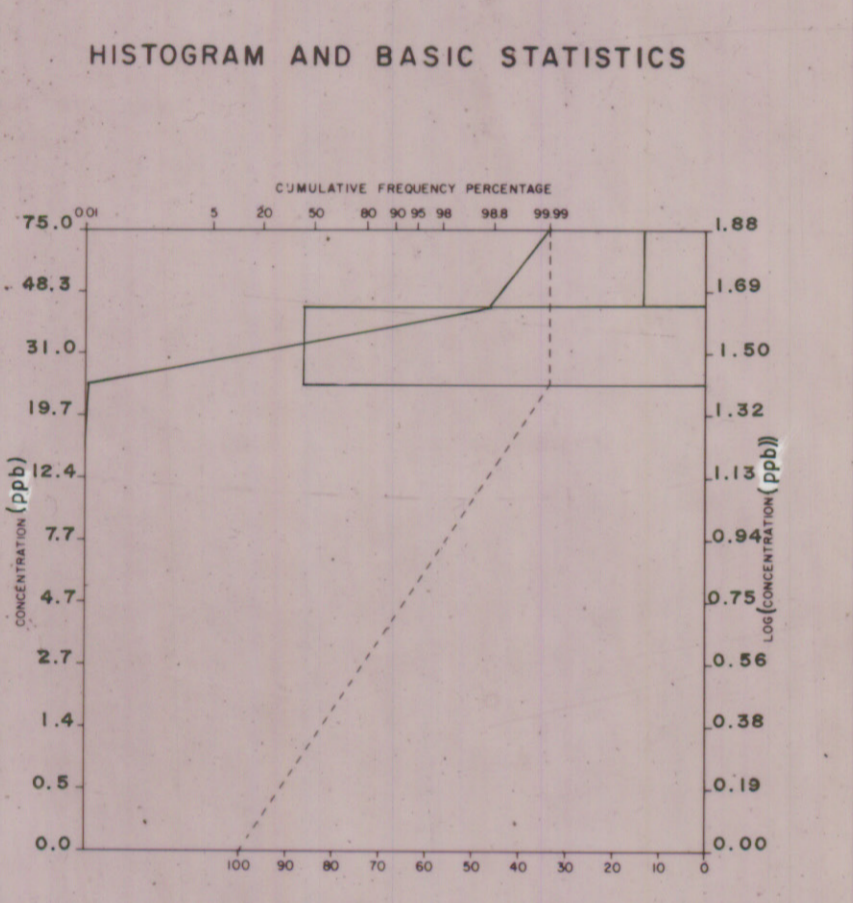
Analytical value in p.p.m. (unless otherwise specified) .. e.g. 106

Geochemical Sample Medium

- Stream sediment, sieved
- Stream sediment, unsieved
- Lake sediment
- Heavy mineral / panned concentrate
- Soil
- Rock
- Peat
- Till
- Other

Note: Two (2) sample numbers per sample location indicates duplicate sample site... e.g., 82-1-025, 026.

N.R. = No Results



Sample collection and Geochemistry: P.J. Rogers and M.A. MacDonald
 Analyses: Chemex Laboratories Ltd., North Vancouver, B.C.
 Sample digestion: Not Applicable
 Analytical technique: Specific Ion Electrode
 Cartography: P.A. Lombard

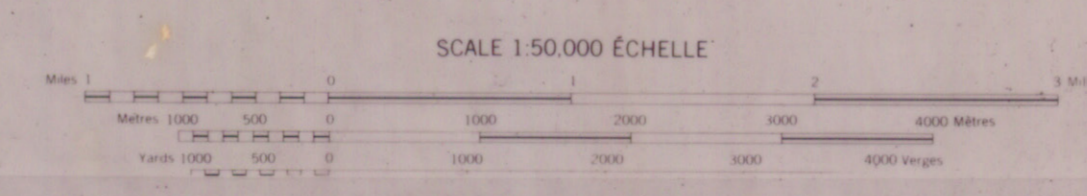
TABLEAU D'ADRESSAIRE DU SYSTÈME NATIONAL DE RÉFÉRENCE CARTOGRAPHIQUE

21 H/10	21 H/9	11 E/12
21 H/7	21 H/8	11 E/5
21 H/2	21 H/1	11 E/4

INDEX TO ADDRESS MAPS OF THE NATIONAL TOPOGRAPHIC SYSTEM

Compiled from the SURVEYS AND MAPPING BRANCH
 DEPARTMENT OF ENERGY, MINES AND RESOURCES
 from and photographs taken in 1976. Contour lines from 1:50,000 scale maps.

Symbol	Description
●	Sample location
○	Stream location
□	Rock outcrop
△	Peat
■	Till
▨	Other



LENTOR INTERNI DI FEEI
 Échelle en pied et en mètres (1:50,000)
 North American Datum 1973
 Projection: Mercator Projection

ÉQUIDISTANCE DES COURES DE NIVEAU
 Échelle en pied et en mètres (1:50,000)
 North American Datum 1973
 Projection: Mercator Projection

Revised from the DIRECTION DES LÈVES ET DE LA CARTOGRAPHIE
 MINISTÈRE DE L'ÉNERGIE, DES MINES ET DES RESSOURCES à partir de
 photographies aériennes prises en 1976. Contour lines from 1:50,000 scale maps.

OPEN FILE
 DOSSIER PUBLIC
 1252
 Geological
 Survey
 Commission
 Géologique
 Ottawa

OPEN FILE
 OFM 86-19
 Nova Scotia
 Department of
 Mines and Energy