

Ni

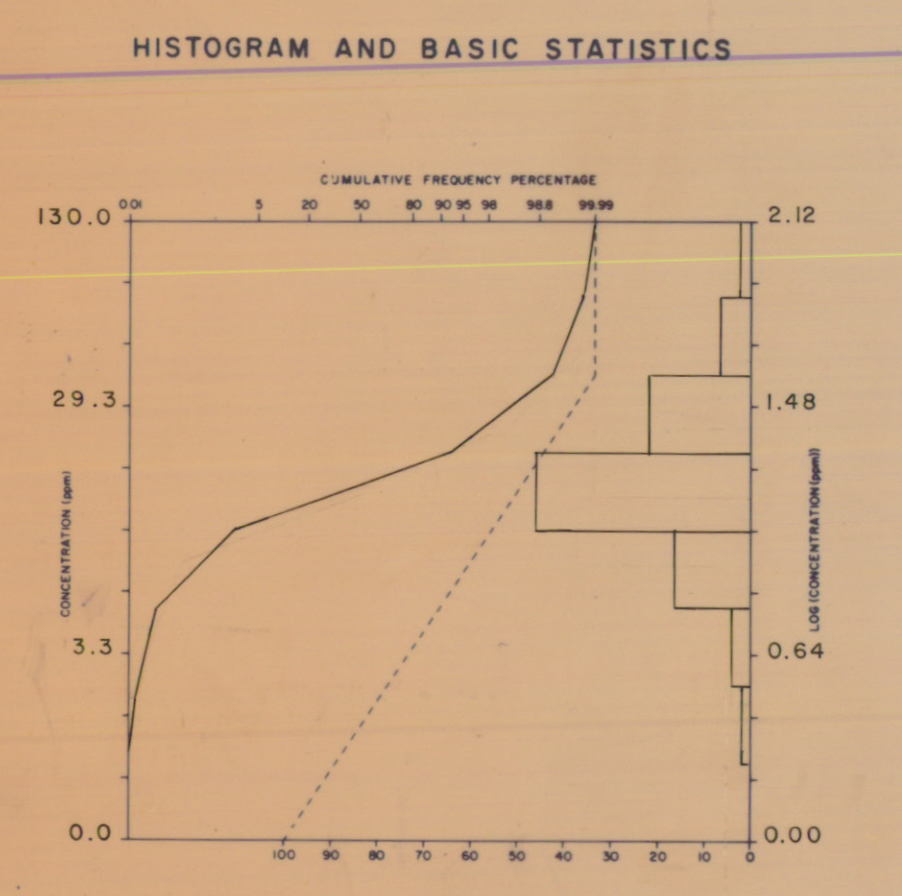
LEGEND

Sample number e.g. 82-1-025
Analytical value in p.p.m. (unless otherwise specified) .. e.g. 106

Geochemical Sample Medium

- Stream sediment, sieved
- Stream sediment, unsieved
- Lake sediment
- Heavy mineral / panned concentrate
- Soil
- Rock
- Peat
- Till
- Other

Note: Two (2) sample numbers per sample location indicates duplicate sample site... e.g. 82-1-025,026
N.R. = No Result



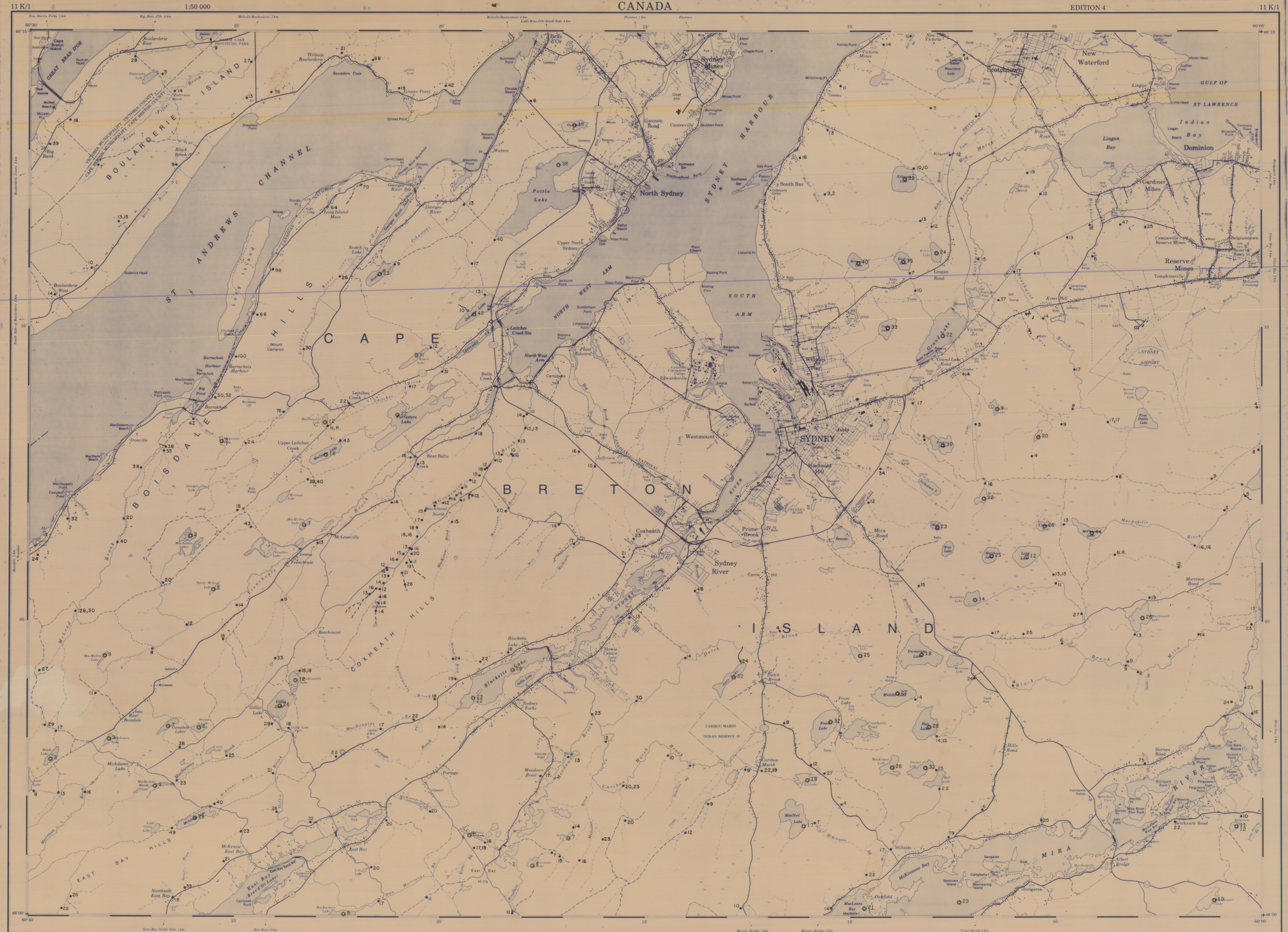
Note: Only data within this 1:50,000 sheet is included.

Sample collection and Geochemistry: P.J. Rogers and M.A. MacDonald
Analyses: Chemex Laboratories Ltd., North Vancouver, B.C.
Sample digestion: Hot HNO₃-HCl Extraction
Analytical technique: Air-Acetylene AAS
Cartography: P. A. Lombard

TABLEAU D'ASSEMBLAGE DU SYSTÈME NATIONAL DE RÉFÉRENCE CARTOGRAPHIQUE

| | | |
|--------|--------|--------|
| 11K/7 | 11K/8 | 11J/5 |
| 11K/2 | 11K/1 | 11J/4 |
| 11F/15 | 11F/16 | 11G/13 |

INDEX TO ACCORDING MAPS OF THE NATIONAL TOPOGRAPHIC SYSTEM



SYDNEY NOVA SCOTIA
Scale 1:50 000 Echelle

CONVERSION SCALE FOR ELEVATIONS
Meters to Feet
Feet to Meters

ÉCHELLE DE CONVERSION DES ALTITUDES
Mètres en Pieds
Pieds en Mètres

© 1981, The Ministry of Energy, Mines and Resources
© 1981, Le Ministère de l'Énergie des Mines et des Ressources

OPEN FILE
DOSSIER PUBLIC
1294
Geological Survey
Commission Géologique
Ottawa

OPEN FILE
86-35
Nova Scotia
Department of Mines and Energy