

**F-w**  
POINTS  
LEGEND

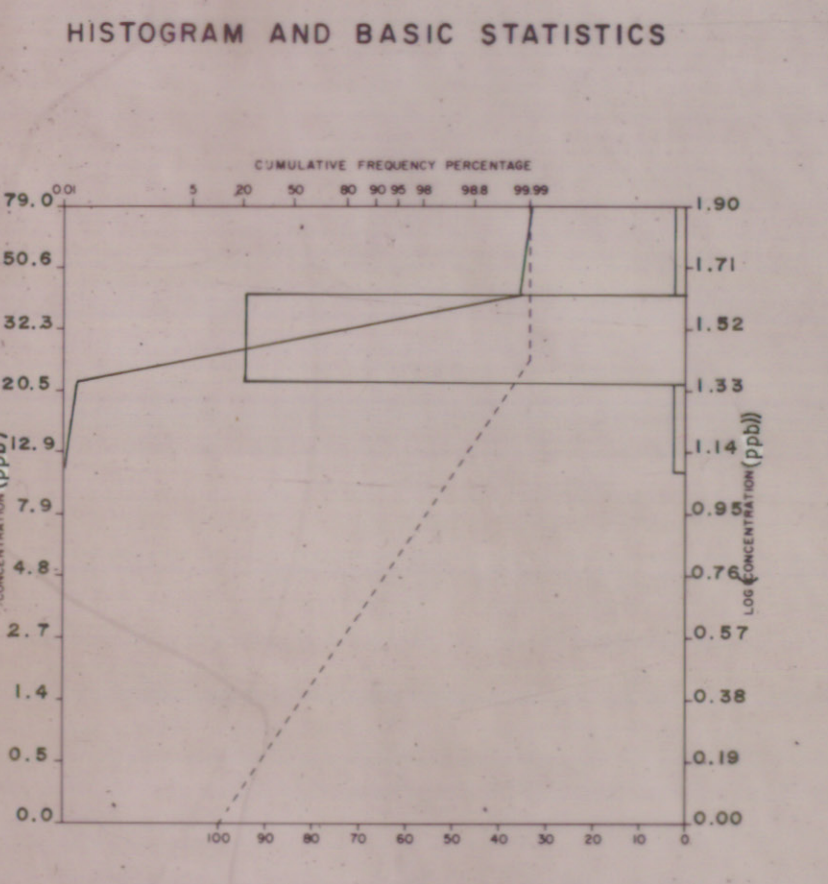
Sample number ..... e.g. # 82-1-025  
year sequential number  
location group

Analytical value in p.p.m. (unless otherwise specified) ... e.g. # 106

Geochemical Sample Medium

- Stream sediment, sieved .....
- Stream sediment, unsieved .....
- Lake sediment .....
- Heavy sediment .....
- Heavy mineral / panned concentrate .....
- Soil .....
- Rock .....
- Peat .....
- Till .....
- Other .....

Note: Two (2) sample numbers per sample location indicates duplicate sample site... e.g. #82-1-025,026  
N.R. = No Results



Sample collection and Geochemistry: P.J. Rogers and M.A. Macdonald  
Analyses: Chemex Laboratories Ltd., North Vancouver, B.C.  
Sample digestion: Not Applicable  
Analytical technique: Direct Absorption  
Cartography: P.A. Lombard

TABLEAU D'INDEXAGE DU SYSTÈME NATIONAL DE RÉFÉRENCE CARTOGRAPHIQUE

11K/11	11K/10	11K/9
11K/6	11K/7	11K/8
11K/3	11K/2	11K/1

INDEX TO ADJOINING MAPS OF THE NATIONAL TOPOGRAPHIC SYSTEM

Published by the SURVEYS AND MAPPING BRANCH  
DEPARTMENT OF ENERGY, MINES AND RESOURCES  
Geological Survey of Canada  
1978, Catalogue No. G1-13/81-82  
© 1981 Her Majesty the Queen in Right of Canada  
Department of Energy, Mines and Resources.

OPEN FILE  
DOSSIER PUBLIC  
**1300**  
Geological  
Survey  
Commission  
Géologique  
Ottawa

**ST. ANNS HARBOUR  
NOVA SCOTIA**  
Scale 1:50,000 Échelle

CONVERSION SCALE FOR ELEVATIONS  
Mètres de 0 à 1000 2000 3000 4000 Mètres  
Feet 0 1000 2000 3000 4000 Feet

CONVERSION ÉCHELLE DES ALTITUDES  
Mètres de 0 à 1000 2000 3000 4000 Mètres  
Pieds 0 1000 2000 3000 4000 Pieds

Information concerning location and precise elevation of each point can be obtained by referring to the Canada Survey, Survey and Mapping Branch, Ottawa.

On peut obtenir des renseignements sur les sites et l'altitude exacte des points en consultant le Service de Levés et de Cartographie, Ottawa.

© 1981 La Majesté La Reine du Chef de Canada  
Ministère de l'Énergie, des Mines et des Ressources.