

pH-w

LEGEND

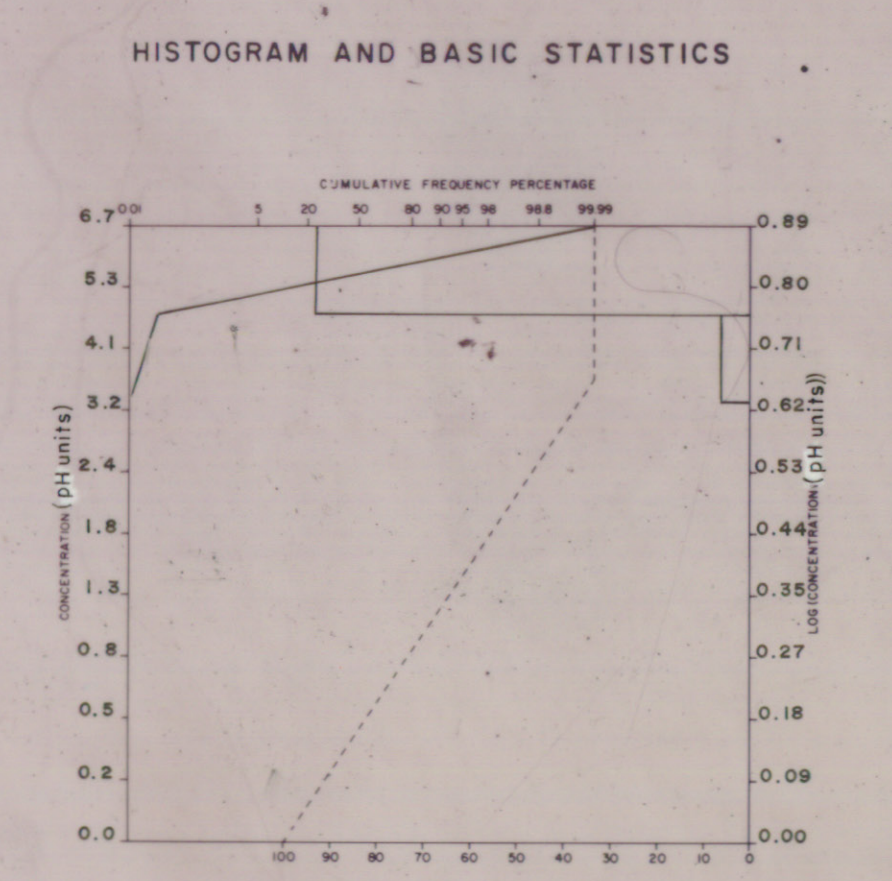
Sample number e.g. 82-1-025
year sequential number
location group

Analytical value in p.p.m. (unless otherwise specified) ... e.g. 106

Geochemical Sample Medium

- Stream sediment, sieved
- Stream sediment, unsieved
- Lake sediment
- Heavy mineral / panned concentrate
- Soil
- Rock
- Peat
- Till
- Other

Note: Two (2) sample numbers per sample location indicates duplicate sample site. e.g., 82-1-025, 026
N.R. = No Results



Sample collection and Geochemistry: P.J. Rogers and M.A. MacDonald
Analyses: Chemex Laboratories Ltd., North Vancouver, B.C.
Sample digestion: Not Applicable
Analytical technique: pH Meter
Cartography: P.A. Lombard

TABLEAU D'ÉCHELONNAGE DU SYSTÈME NATIONAL DE RÉFÉRENCE CARTOGRAPHIQUE

11 E/16	11 F/13	11 F/14
11 E/9	11 F/12	11 F/11
11 E/8	11 F/5	11 F/6

INDEX TO RESIDING MAPS OF THE NATIONAL TOPOGRAPHIC SYSTEM



Produced by the SURVEYS AND MAPPING BRANCH, DEPARTMENT OF ENERGY, MINES AND RESOURCES. Copied from aerial photographs taken in 1979. Culture check 1980. Antigonish 1982.

Information concerning location and general character of beach marks can be obtained by writing to the Geodetic Survey, Survey and Mapping Branch, Ottawa.

On peut obtenir des renseignements sur le lieu et le caractère général des marques de rivage en écrivant aux levés géodésiques, Direction des levés et de la cartographie, Ottawa.

CONVERSION SCALE FOR ELEVATIONS
Meters: 0 100 200 300 400 500 600 700 800 900 1000
Feet: 0 300 600 900 1200 1500 1800 2100 2400 2700 3000

ÉCHELLE DE CONVERSION DES ALTITUDES
Mètres: 0 100 200 300 400 500 600 700 800 900 1000
Pieds: 0 300 600 900 1200 1500 1800 2100 2400 2700 3000

Scale 1:50,000 Échelle

Contours: 100, 200, 300, 400, 500, 600, 700, 800, 900, 1000, 1100, 1200, 1300, 1400, 1500, 1600, 1700, 1800, 1900, 2000, 2100, 2200, 2300, 2400, 2500, 2600, 2700, 2800, 2900, 3000, 3100, 3200, 3300, 3400, 3500, 3600, 3700, 3800, 3900, 4000, 4100, 4200, 4300, 4400, 4500, 4600, 4700, 4800, 4900, 5000, 5100, 5200, 5300, 5400, 5500, 5600, 5700, 5800, 5900, 6000, 6100, 6200, 6300, 6400, 6500, 6600, 6700, 6800, 6900, 7000, 7100, 7200, 7300, 7400, 7500, 7600, 7700, 7800, 7900, 8000, 8100, 8200, 8300, 8400, 8500, 8600, 8700, 8800, 8900, 9000, 9100, 9200, 9300, 9400, 9500, 9600, 9700, 9800, 9900, 10000.

OPEN FILE
DOSSIER PUBLIC
1305
Geological
Survey
Commission
Géologique
Ottawa

OPEN FILE
86-43
Nova Scotia
Department of
Mines and Energy