

MINERAL RESOURCE LAND USE MAP OF HALIFAX COUNTY

OFM 88-004 (11D/12)

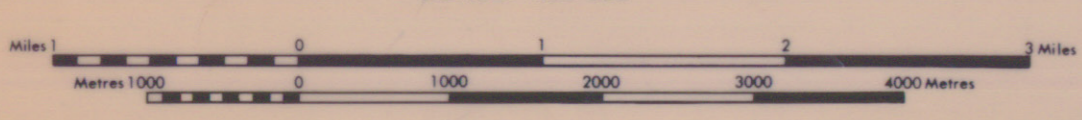
Compiled By

D.B. HOPPER AND C.A. DOBSON

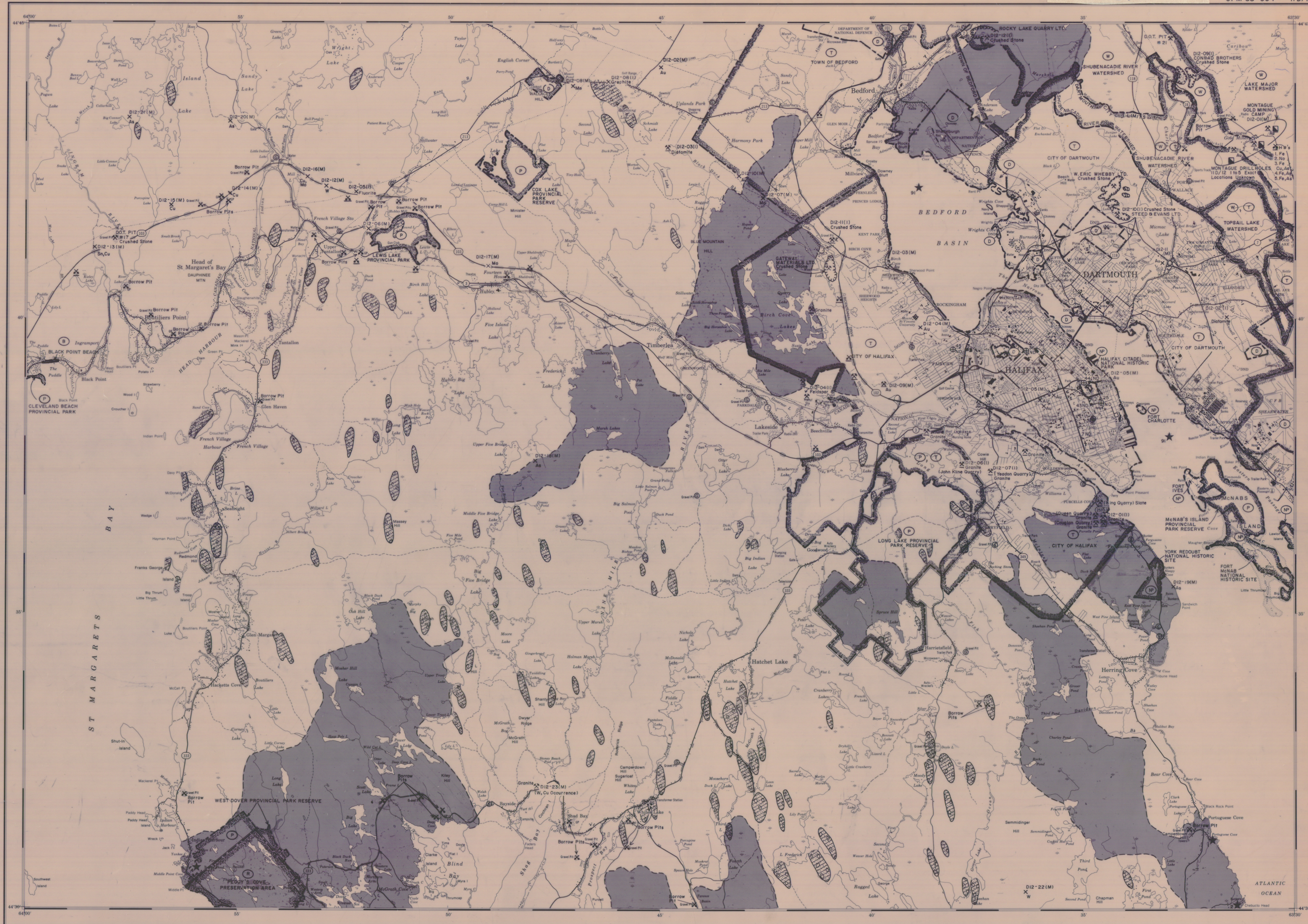
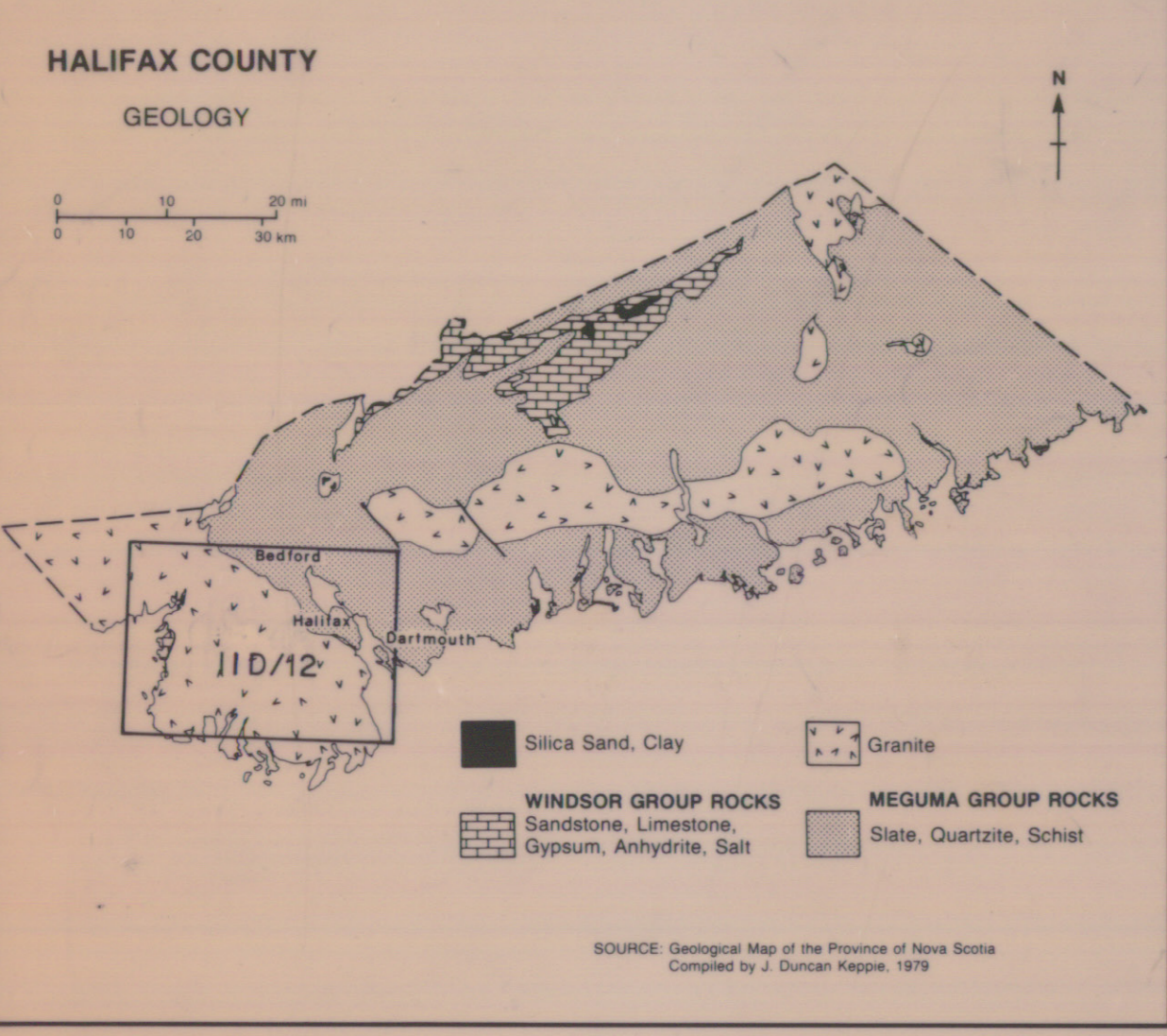
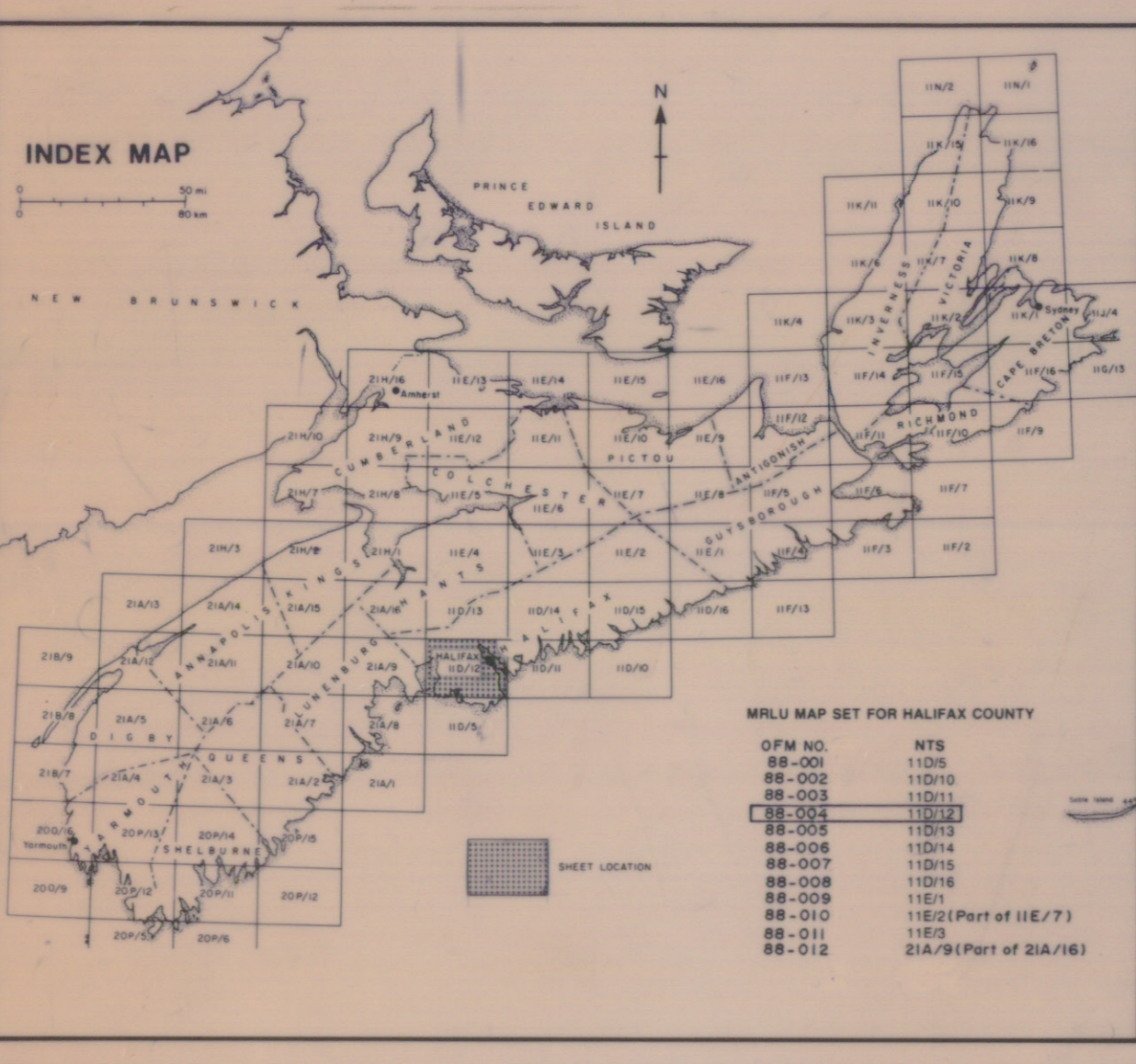
1988

HONOURABLE KEN STREATCH MINSTER JOHN J. LAFFIN, P.ENG., FEC DEPUTY MINISTER

SCALE: 1:50 000



The Nova Scotia Department of Mines and Energy is responsible for the proper management of the Province's mineral and energy resources. Under the Canada-Nova Scotia Mineral Development Agreement, Mines and Energy has initiated a land use planning project aimed at developing a provincial mineral land use policy. The project is to develop a comprehensive database of mineral resource and land use information, and thereby provide the support data required to prepare the policy.



SAND & GRAVEL RESOURCES

- Sand deposit
- Gravel deposit
- Sand & gravel deposit
- Pit (active, inactive)

METALLIC MINERALS

Metal occurrence

Mine (active, inactive)

Mine tailings

Gold mining camps

Shaft(s) (abandoned)

Metals:

Antimony	Sb	Mercury	Hg
Arsenic	As	Molybdenum	Mo
Beryllium	Be	Nickel	Ni
Bismuth	Bi	Platinum group	PG
Calcium	Ca	Silver	Ag
Chromium	Cr	Tantalum	Ta
Cobalt	Co	Thorium	Th
Columbium	Nb	Tin	Sn
Copper	Cu	Tungsten	W
Gold	Au	Vanadium	V
Iron	Fe	Zinc	Zn
Magnesium	Mg	Zirconium	Zr

Drillhole

INDUSTRIAL MINERALS

Mineral/Commodity occurrence

Mine/Quarry (active, inactive)

Mine/Quarry boundary

Mine tailings

Peat bog (horticultural peat ≥ 100 ha)

Industrial Minerals & Commodities:

Alumina	Alumina	Diopside	Diopside	Melt	Melt
Asbestos	Asbestos	Fluorite	Fluorite	Par mica	Par mica
Barite	Barite	Gypsum	Gypsum	Phosphate	Phosphate
Bauxite	Bauxite	Halite	Halite	Pyrite	Pyrite
Clay	Clay	Iron ore	Iron ore	Rock salt	Rock salt
Coal	Coal	Lead	Lead	Serpentine	Serpentine
Coal seam	Coal seam	Lithium	Lithium	Silica sand	Silica sand
Crystalline silica	Crystalline silica	Manganese	Manganese	Silica sand (quartzite)	Silica sand (quartzite)
Fluorspar	Fluorspar	Mercury	Mercury	Silica sand (quartzite)	Silica sand (quartzite)
Graphite	Graphite	Molybdenum	Molybdenum	Silica sand (quartzite)	Silica sand (quartzite)
Halite	Halite	Nickel	Nickel	Silica sand (quartzite)	Silica sand (quartzite)
Iron ore	Iron ore	Platinum group	Platinum group	Silica sand (quartzite)	Silica sand (quartzite)
Lithium	Lithium	Silver	Silver	Silica sand (quartzite)	Silica sand (quartzite)
Manganese	Manganese	Tantalum	Tantalum	Silica sand (quartzite)	Silica sand (quartzite)
Mercury	Mercury	Thorium	Thorium	Silica sand (quartzite)	Silica sand (quartzite)
Molybdenum	Molybdenum	Tin	Tin	Silica sand (quartzite)	Silica sand (quartzite)
Nickel	Nickel	Tungsten	Tungsten	Silica sand (quartzite)	Silica sand (quartzite)
Platinum group	Platinum group	Vanadium	Vanadium	Silica sand (quartzite)	Silica sand (quartzite)
Pyrite	Pyrite	Zinc	Zinc	Silica sand (quartzite)	Silica sand (quartzite)
Rock salt	Rock salt	Zirconium	Zirconium	Silica sand (quartzite)	Silica sand (quartzite)
Serpentine	Serpentine			Silica sand (quartzite)	Silica sand (quartzite)
Silica sand	Silica sand			Silica sand (quartzite)	Silica sand (quartzite)
Silica sand (quartzite)	Silica sand (quartzite)			Silica sand (quartzite)	Silica sand (quartzite)
Silica sand (quartzite)	Silica sand (quartzite)			Silica sand (quartzite)	Silica sand (quartzite)
Silica sand (quartzite)	Silica sand (quartzite)			Silica sand (quartzite)	Silica sand (quartzite)
Silica sand (quartzite)	Silica sand (quartzite)			Silica sand (quartzite)	Silica sand (quartzite)

Drillhole

ENERGY RESOURCES

Coal field boundary (approximate)

Coal mine (active, inactive)

Coal seam (approximate, inferred)

Coal waste bank

Near surface coal resource (≤ 100 feet below surface)

Underground coal resource (≥ 100 feet below surface)

Peat bog (fuel peat ≥ 100 ha)

Oil shale

Surface Petroleum shows

Drillhole

LANDFORMS

Ice contact deposit (kame, terrace, etc.)

Esker

Drumlin

Sink hole, sink hole topography

Bedrock or thin till veneer

GEOLOGICAL POINTS OF INTEREST

Geological points of interest

LAND USE

Mineral resource management zone (designated by the municipality)

Note: The following categories are those land uses which completely or partially restrict mineral exploration and mining.

COMPLETELY RESTRICTED

- National Defence land
- National park, national historic park, national historic site, heritage canal
- NDSME* closure area
- Uranium closure area

PARTIALLY RESTRICTED

- Protected beach (designated under the Beaches Preservation and Protection Act)
- Ecological site/protected site (designated under the Special Places Protection Act)
- Game preserve/wildlife management area
- Indian reserve
- Major airport (civilian)
- Preservation area (Peggys Cove and Sherbrooke Village)
- Provincial park (or park reserve ≥ 2 km²)
- Township land
- Watership watershed
- Land Use boundary