

MINERAL RESOURCE LAND USE

MAP

KINGS COUNTY

OFM 88-045 (21A/15)

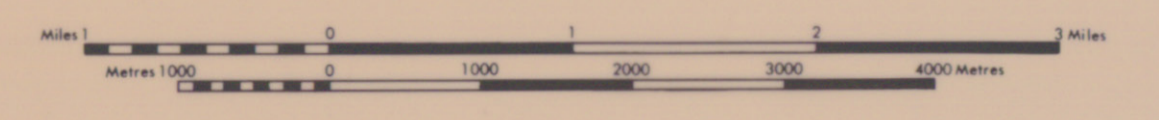
Compiled By

D. B. HOPPER AND H. J. GILLIS

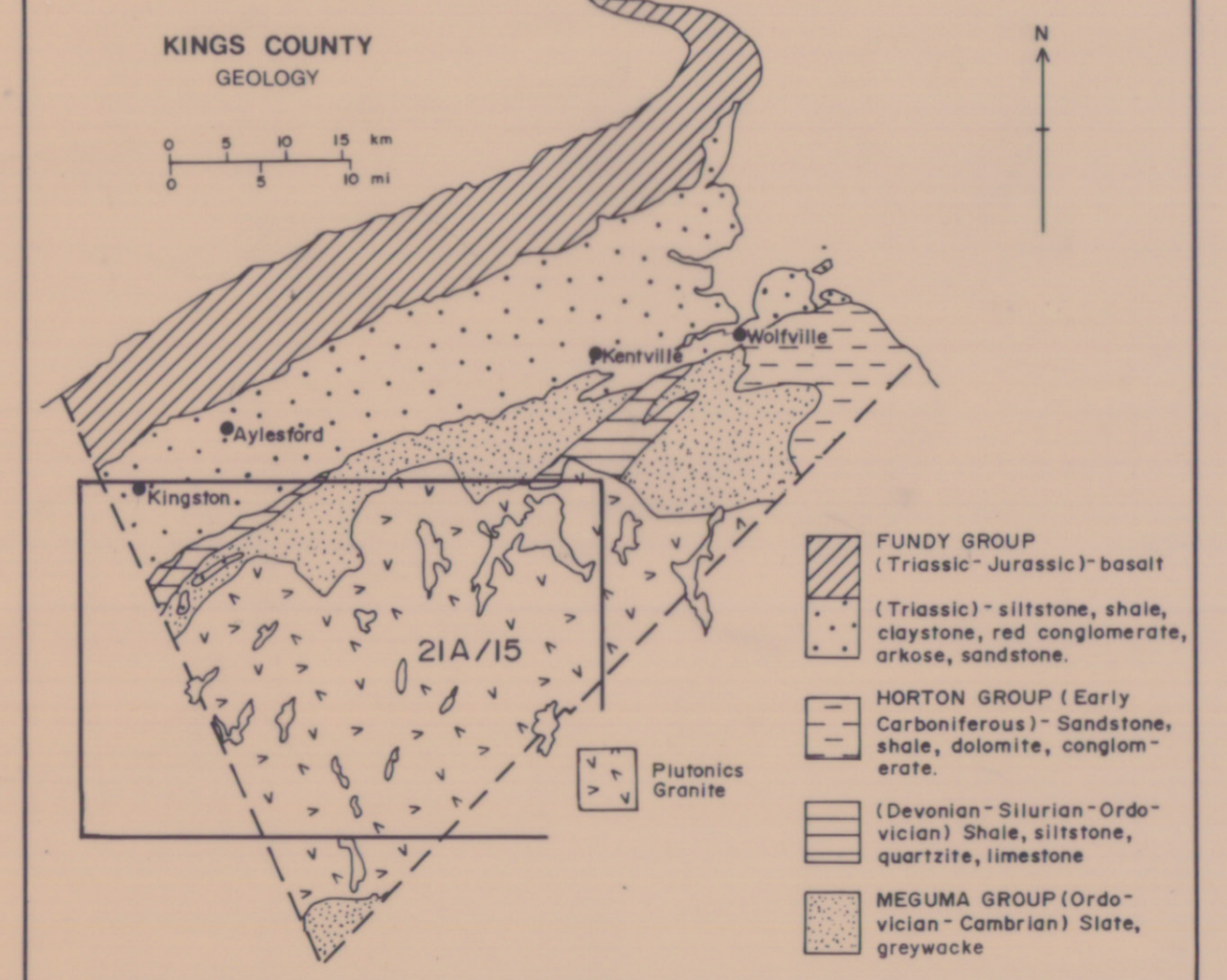
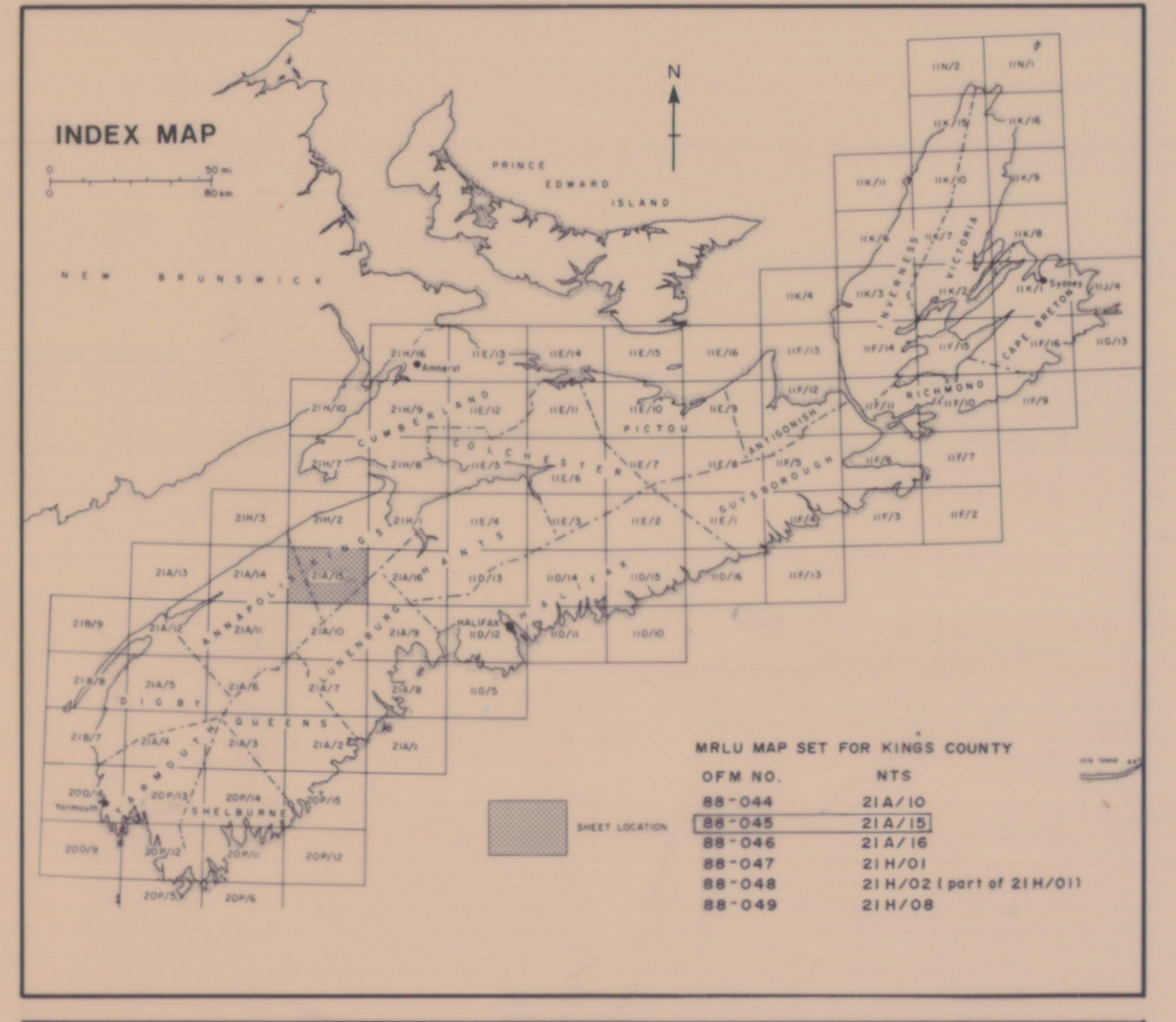
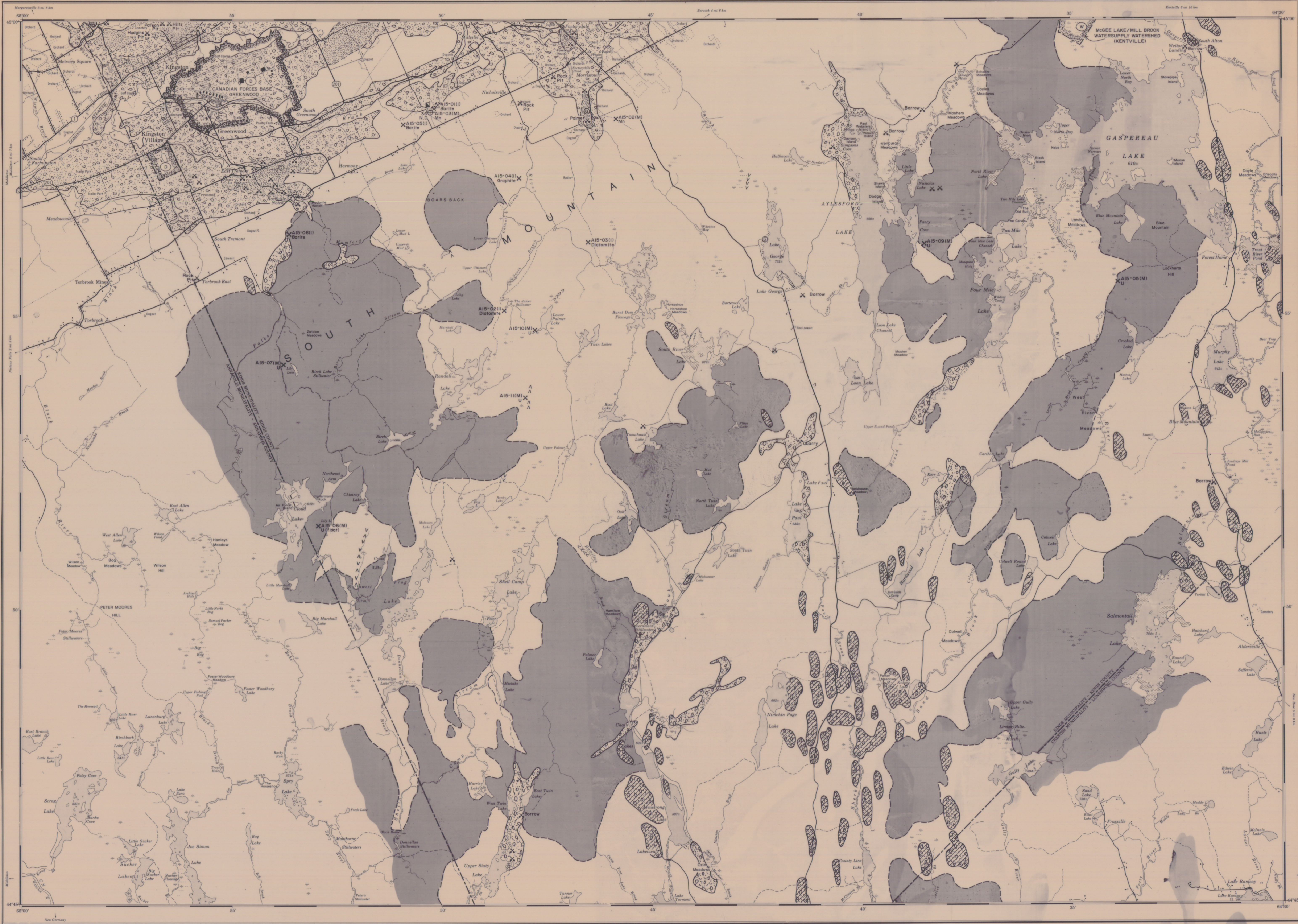
1989

HONOURABLE JACK McISAAC MINISTER JOHN J. LAFFIN, P. ENG., FCIC DEPUTY MINISTER

SCALE: 1:50 000



The Nova Scotia Department of Mines and Energy is responsible for the proper management of the Province's mineral and energy resources. Under the Canada-Nova Scotia Mineral Development Agreement, Mines and Energy has initiated a land use planning project aimed at developing a provincial mineral land use policy. The project is to develop a comprehensive database of mineral resource and land use information, and thereby provide the support data required to prepare the policy. The Mineral Resource Land Use (MRLU) map series is part of that project. These maps provide information about the location and distribution of mineral and energy resources in Nova Scotia. They also show certain land uses which affect, either positively or negatively, mineral exploration and mining. The objective behind compiling the MRLU map series is to provide input to resource planning and to establish a basis for identifying and resolving possible conflicts in land use. The information presented on the MRLU maps is compiled from published and unpublished maps and reports available at Nova Scotia Department of Mines and Energy. The maps contain a wide range of topics combined to show the spatial relationships between known mineral and energy resources and existing land use activities. The alpha-numeric codes used to identify mineral and energy occurrences in MRLU maps correspond to a series of resource indexes prepared by this Department. Each MRLU map set has an accompanying handbook which describes each code in detail. The MRLU map series organizes the information according to Nova Scotia's 18 counties. All MRLU maps are 1:50 000, National Topographic Series. The index map below shows each county and its corresponding set of NTS sheets.



SOURCE: Geological Map of the Province of Nova Scotia, Compiled by J. Curzon Neale, 1979

Base map derived from National Topographic 1:50,000 Series; Produced by Survey and Mapping Branch, Energy, Mines and Resources, Canada. Edition 3; Information Current as of 1979.

Table with 2 columns: Resource Type and Symbol. Includes Sand & Gravel Resources, Metallic Minerals, and Drift Hole.

Table with 2 columns: Mineral/Commodity occurrence and Symbol. Includes Mine/Quarry, Mine Tailings, and Industrial Minerals & Commodities.

Table with 2 columns: Energy Resources and Symbol. Includes Coal field, Coal mine, Coal waste bank, and Oil shale.

Table with 2 columns: Landforms and Symbol. Includes Glaciofluvial deposits, Esters, and Geological points of interest.

Table with 2 columns: Land Use and Symbol. Includes Land owned/leased by mining companies, National Defence land, and Provincial park.

Table with 2 columns: Land Use and Symbol. Includes Land owned/leased by mining companies, National Defence land, and Provincial park.