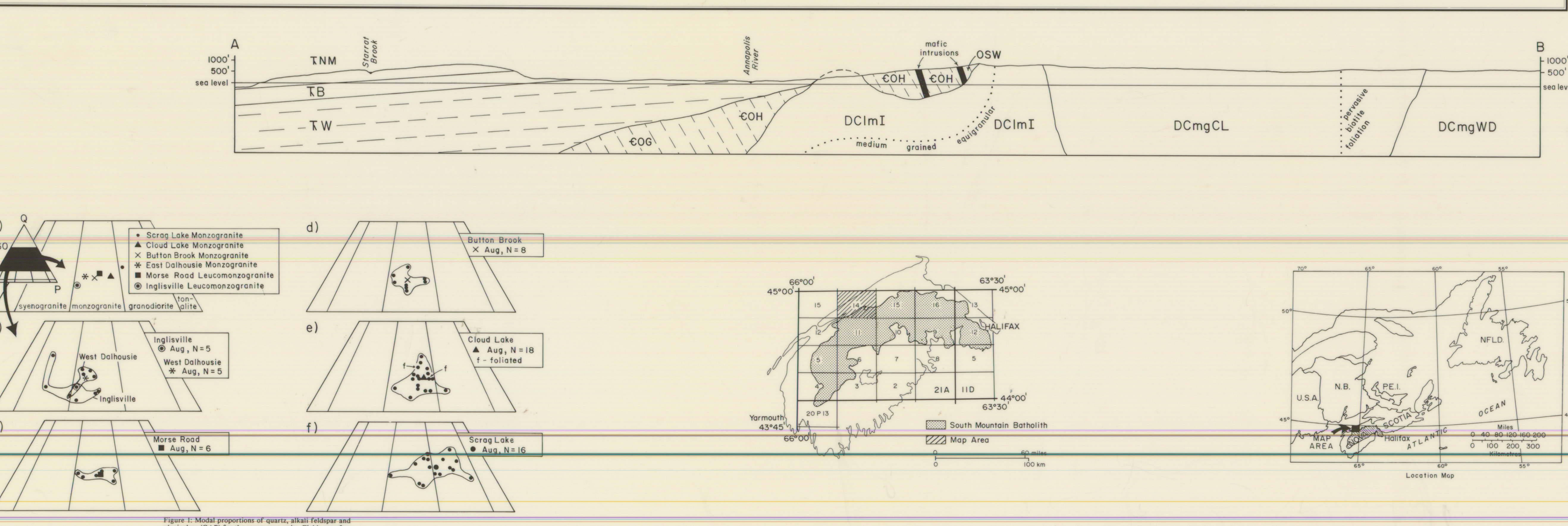
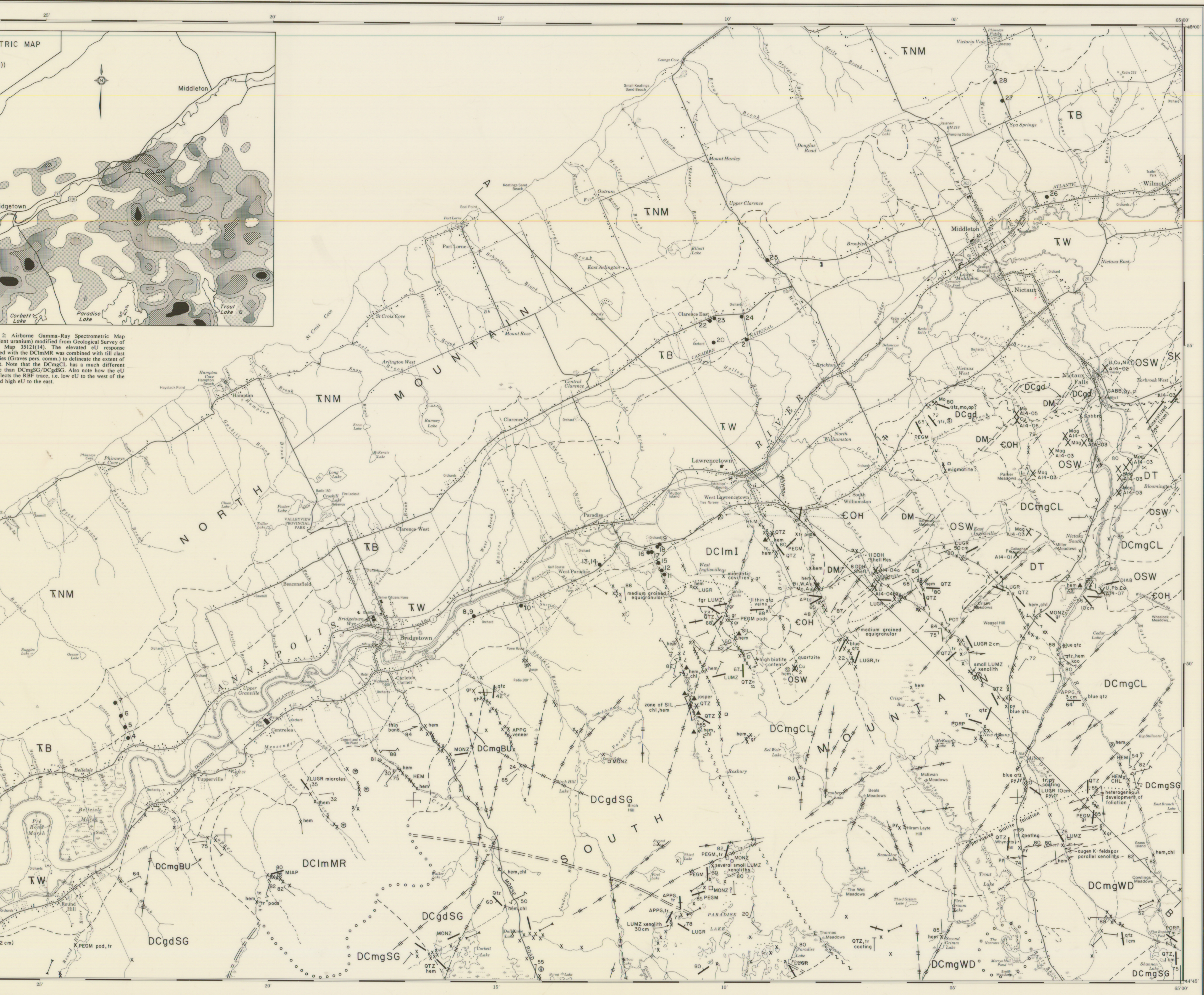


Table with 2 columns: Unit Code and Description. Includes units like TNM (North Mountain Basalt), TB (Tremulous Formation), TW (Wolfville Formation), and various Devonian-Cambrian units.

Table with 2 columns: Unit Code and Description. Includes units like DCmCL (Cloud Lake Monzonite), DCmSG (Scrag Lake Monzonite), DCmG (Mafic Intrusions), and others.

Table with 2 columns: Symbol and Description. Lists various geological symbols for faults, boundaries, and mineral occurrences.

Table with 2 columns: Mineral Name and Abbreviation. Lists various mineral abbreviations like alb, act, an, ap, etc.



Introduction: Geological mapping based on the Devonian-Cambrian rocks of the South Mountain Batholith (SMB) and associated units. Includes sections on the Cambro-Ordovician country rocks, the Devonian-Cambrian rocks, and the mafic intrusions.

Map information block including the title 'OPEN FILE MAP 89-116 PRELIMINARY GEOLOGICAL MAP OF BRIDGETOWN NTS SHEET 21A/14', authors 'M. A. MACDONALD AND L. J. HAM', and the 'NOVA SCOTIA DEPARTMENT OF MINES AND ENERGY' logo.

Vertical text on the right edge of the page, including 'BRI DGE TOWN' at the top and 'NOVA SCOTIA DEPARTMENT OF MINES AND ENERGY' at the bottom.