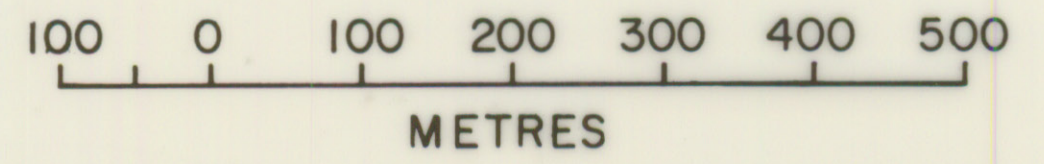


DIATOMACEOUS EARTH PROJECT

BY
A. R. ANDERSON
1989

Jack MacIsaac, Minister
John J. Laffin, D. Eng., FEIC, P. Eng., Deputy Minister



LEGEND

- WATER
 - UNCONSOLIDATED SAMPLE
 - PEAT
 - dark grey brown to brown, amorphous
 - light grey tan, brown, amorphous
 - greenish grey, fairly dense, ooze like
 - grey white to white (green or orange staining)
 - transition zone
 - OOZE-SILT OR NONDIATOMACEOUS STRATA
- } DIATOMACEOUS EARTH

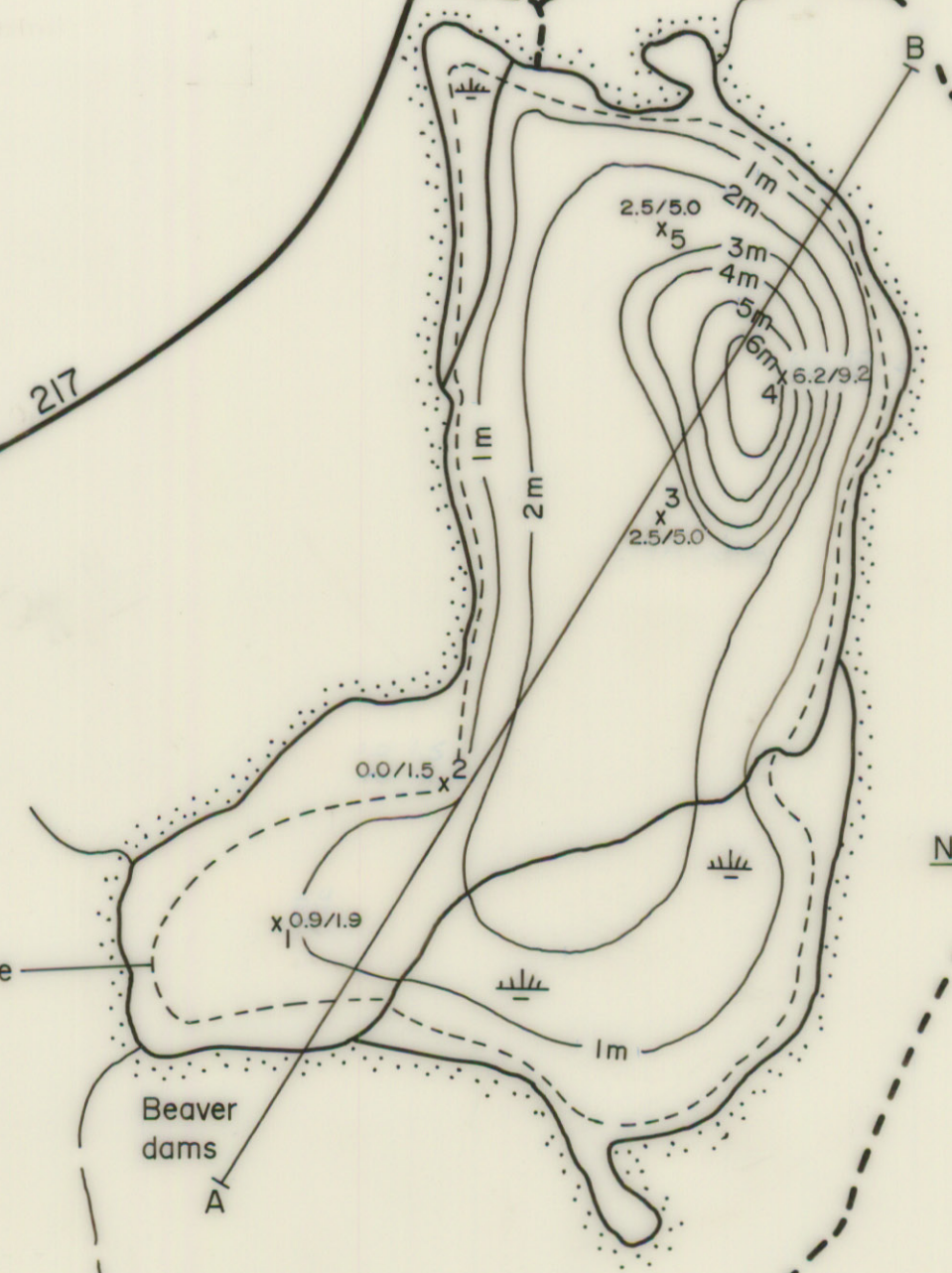
HARRIS LAKE - DIGBY COUNTY
21B/08D 7

BOG No.6

HARRIS LAKE
BOG No.7



Route 217

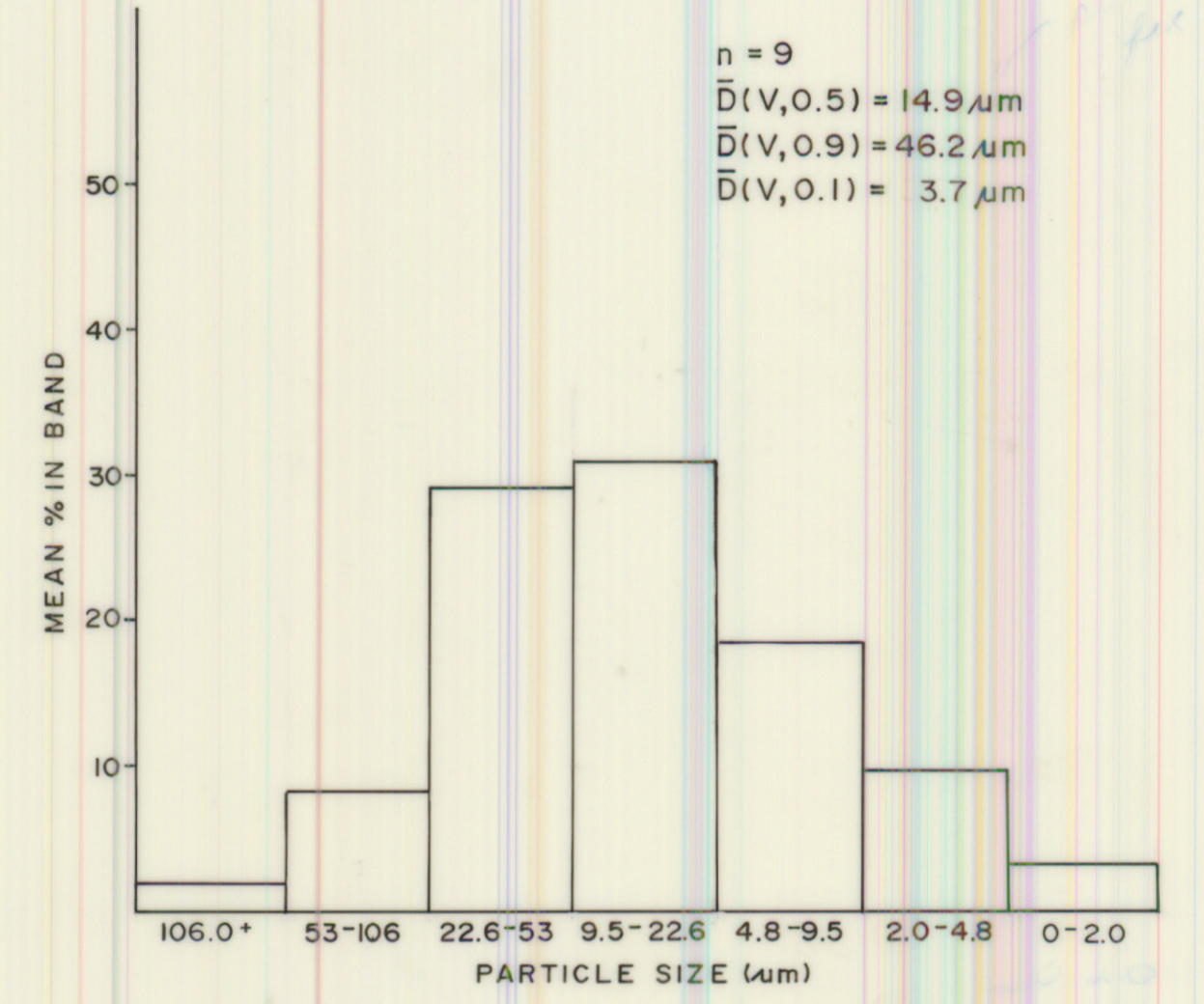
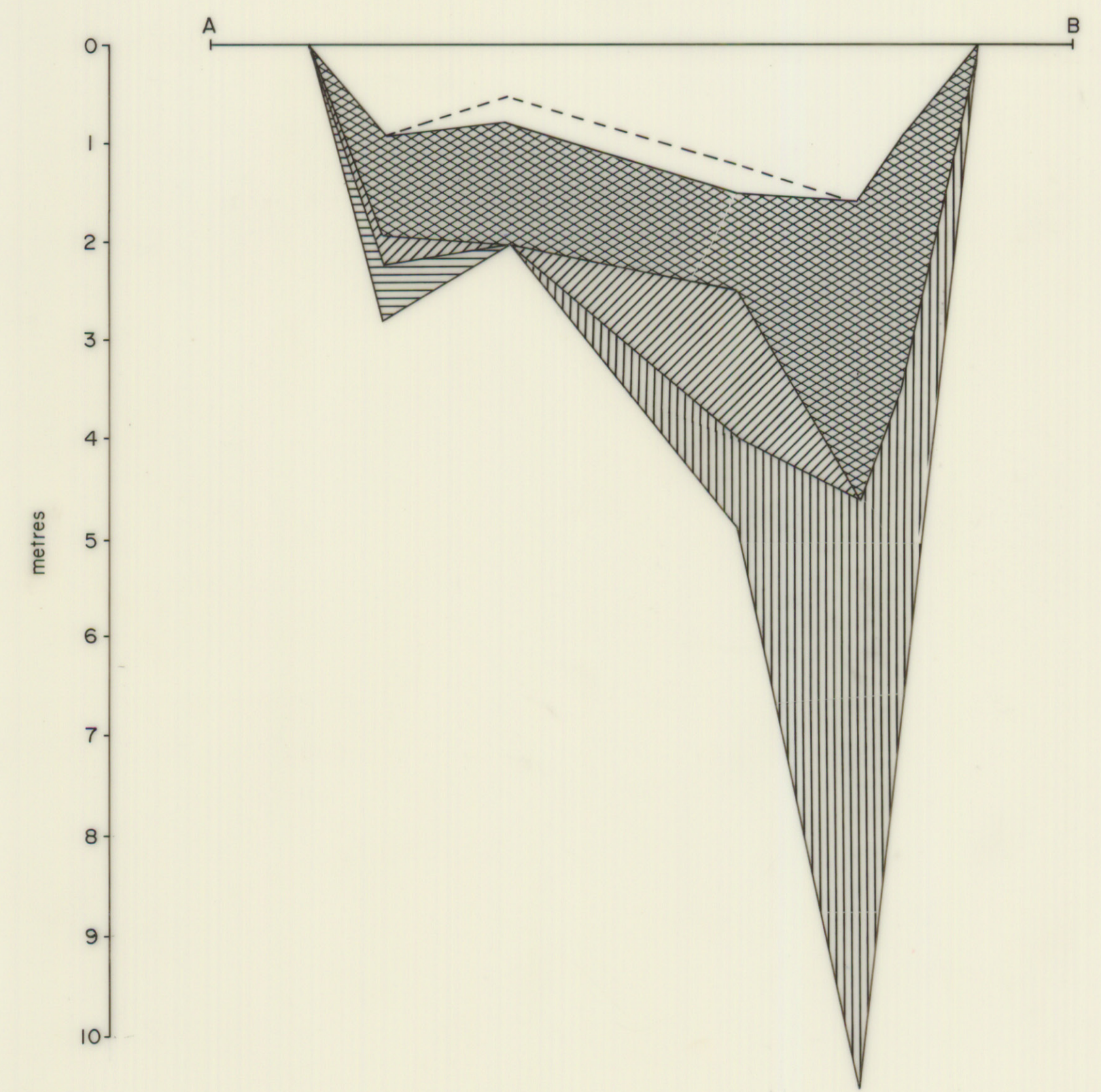
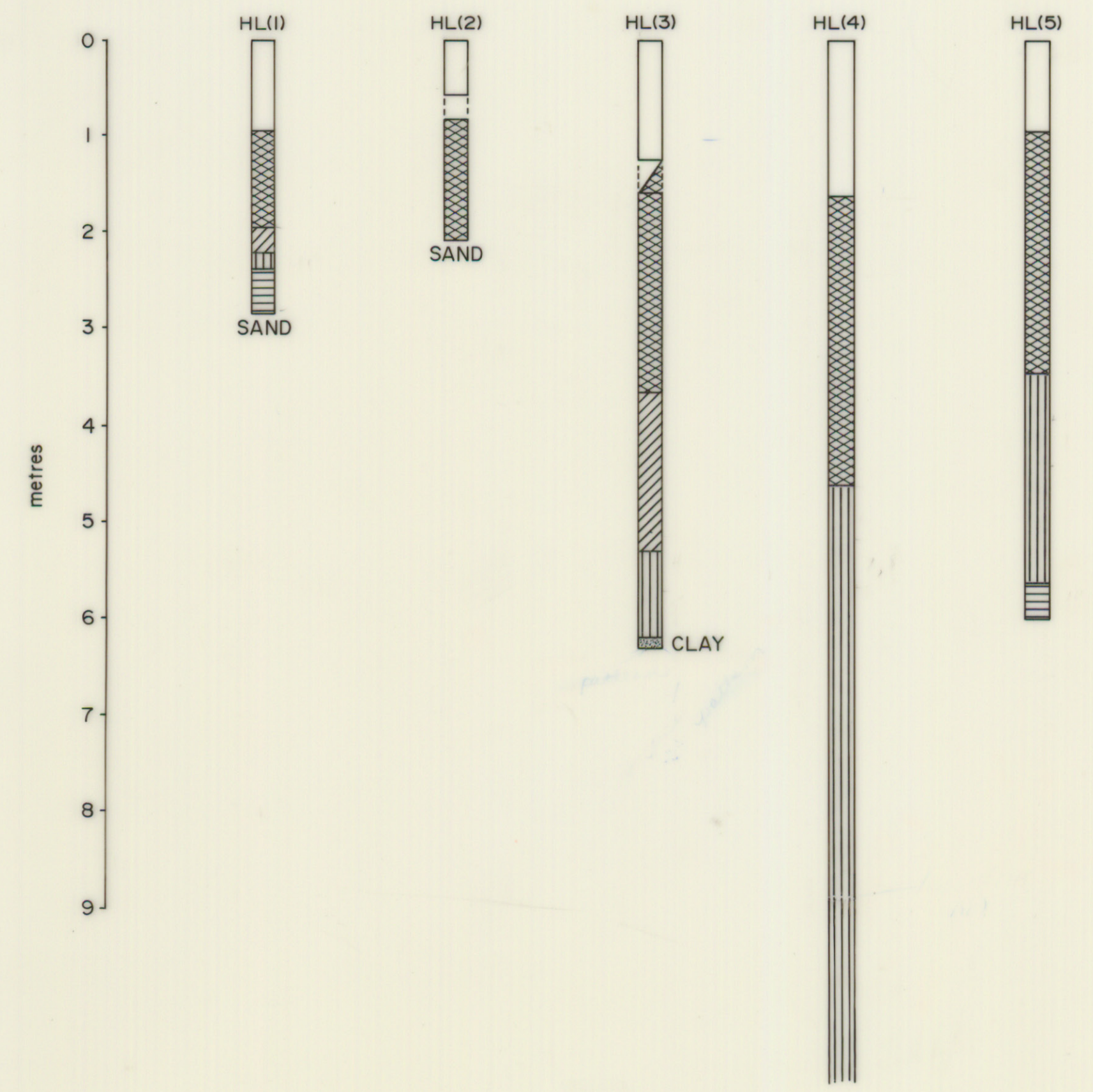


Note: Isopachs estimated from Foran, 1950

Limit of diatomite

Beaver dams

Sample location x
Thickness of diatomaceous earth /
total thickness of sediments
(metres) 2.5/5.0



Vertical exaggeration X 100