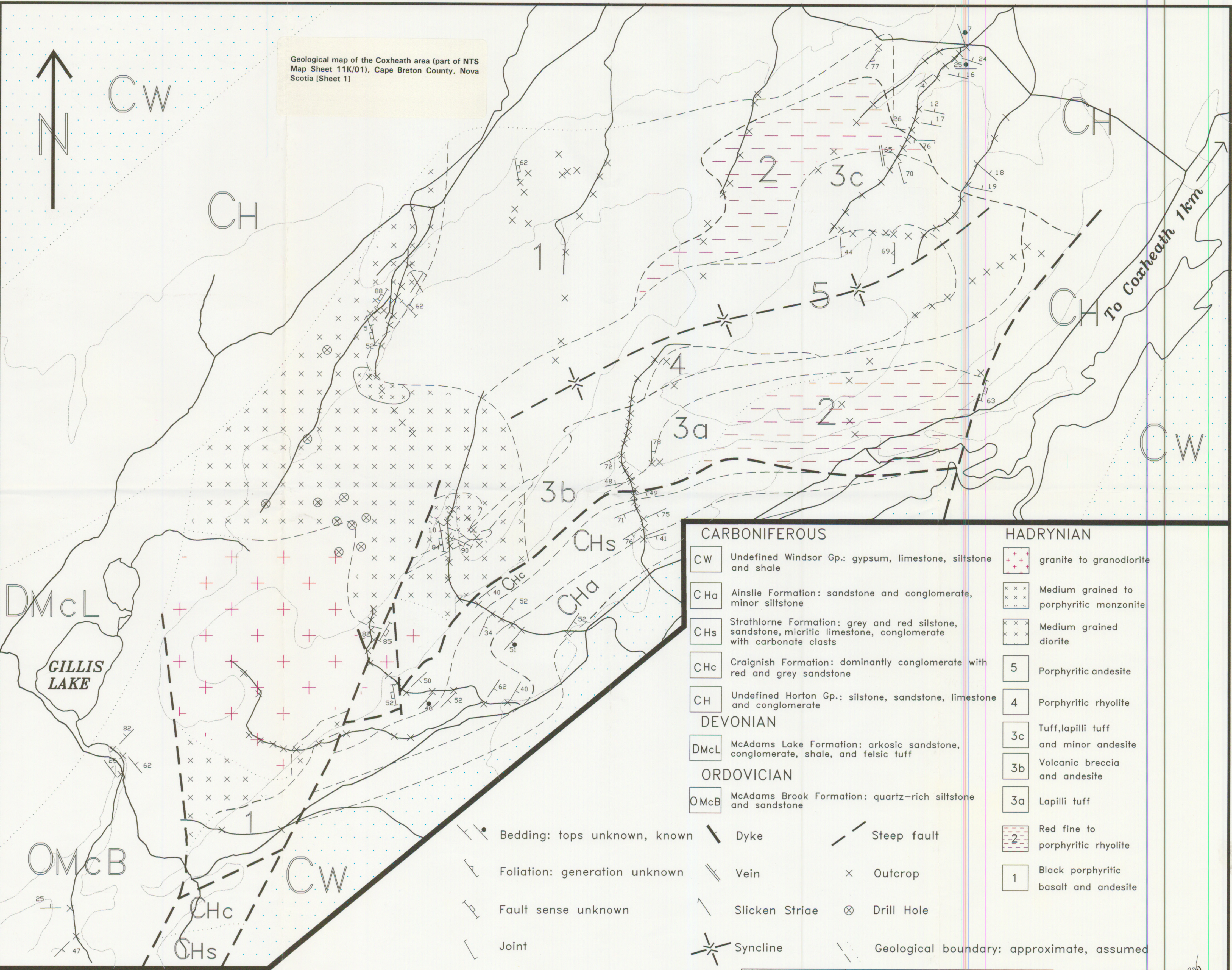


Geological map of the Coxheath area (part of NTS Map Sheet 11K/01), Cape Breton County, Nova Scotia [Sheet 1]



CARBONIFEROUS		HADRYNIAN	
CW	Undefined Windsor Gp.: gypsum, limestone, siltstone and shale	+	granite to granodiorite
CHa	Ainslie Formation: sandstone and conglomerate, minor siltstone	x x x	Medium grained to porphyritic monzonite
CHs	Strathlorne Formation: grey and red siltstone, sandstone, micritic limestone, conglomerate with carbonate clasts	x x	Medium grained diorite
CHc	Craignish Formation: dominantly conglomerate with red and grey sandstone	5	Porphyritic andesite
CH	Undefined Horton Gp.: siltstone, sandstone, limestone and conglomerate	4	Porphyritic rhyolite
DEVONIAN		3c	Tuff, lapilli tuff and minor andesite
DMcL	McAdams Lake Formation: arkosic sandstone, conglomerate, shale, and felsic tuff	3b	Volcanic breccia and andesite
ORDOVICIAN		3a	Lapilli tuff
OMcB	McAdams Brook Formation: quartz-rich siltstone and sandstone	2	Red fine to porphyritic rhyolite
		1	Black porphyritic basalt and andesite
	Bedding: tops unknown, known		
	Foliation: generation unknown		
	Fault sense unknown		
	Joint		
	Mine		
	Dyke		
	Vein		
	Slicken Striae		
	Syncline		
	Steep fault		
	Outcrop		
	Drill Hole		
	Geological boundary: approximate, assumed		

