

Nova Scotia Department of Natural Resources
 Minerals and Energy Branch
 Open File Map ME 2000-1
LAND DESIGNATION AND OWNERSHIP IN NOVA SCOTIA

Researched and Compiled by:
 D.B. Hopper, F.J. Bonner, and B.E. Fisher

SCALE 1:500 000
 0 20 40 Kilometres



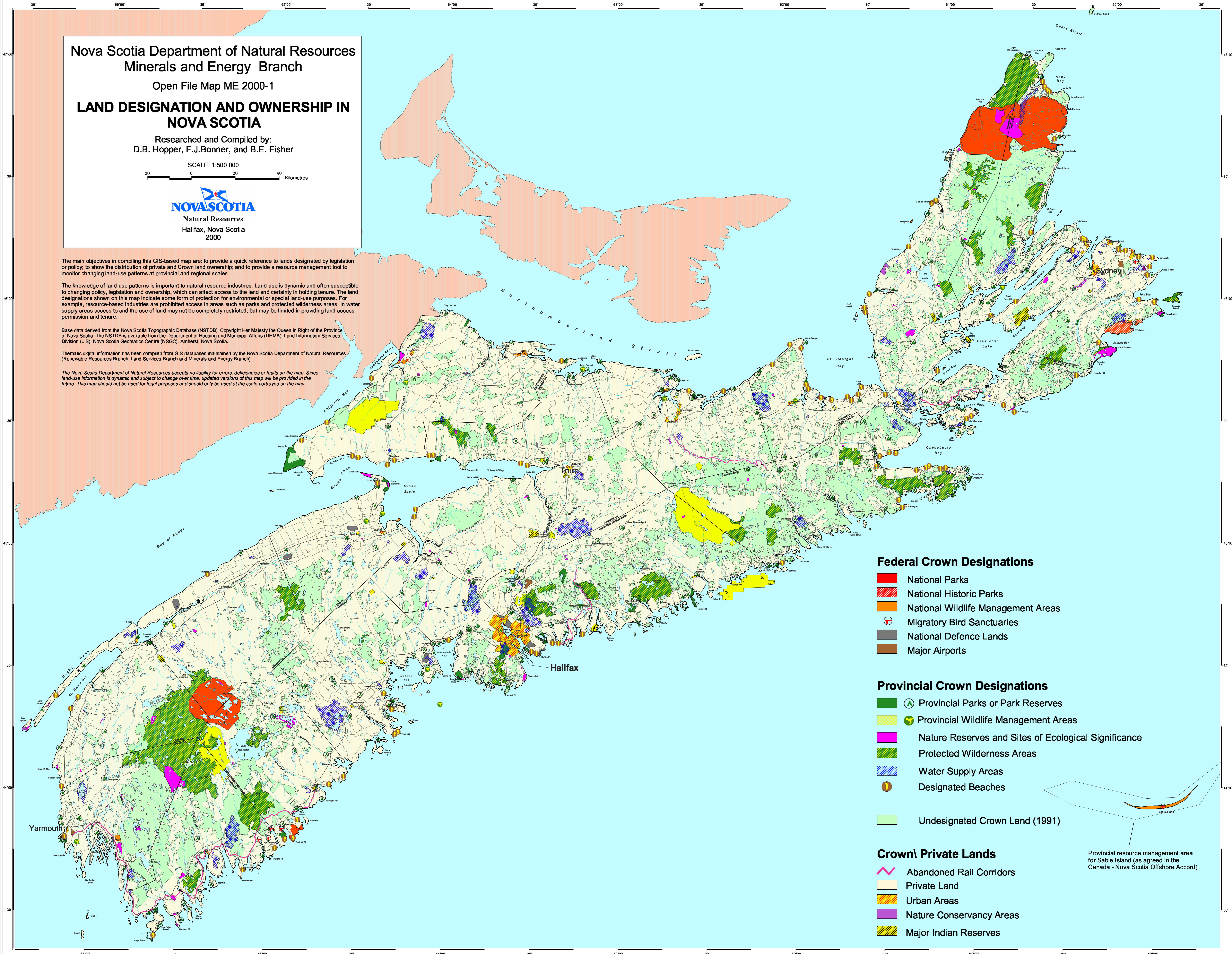
The main objectives in compiling this GIS-based map are: to provide a quick reference to lands designated by legislation or policy; to show the distribution of private and Crown land ownership; and to provide a resource management tool to monitor changing land-use patterns at provincial and regional scales.

The knowledge of land-use patterns is important to natural resource industries. Land-use is dynamic and often susceptible to changing policy, legislation and ownership, which can affect access to the land and certainty in holding tenure. The land designations shown on this map indicate some form of protection for environmental or special land-use purposes. For example, resource-based industries are prohibited access in areas such as parks and protected wilderness areas. In water supply areas access to and the use of land may not be completely restricted, but may be limited in providing land access permission and tenure.

Base data derived from the Nova Scotia Topographic Database (NSTDB). Copyright Her Majesty the Queen in Right of the Province of Nova Scotia. The NSTDB is available from the Department of Housing and Municipal Affairs (DHMA), Land Information Services Division (LIS), Nova Scotia Geomatics Centre (NSGC), Amherst, Nova Scotia.

Thematic digital information has been compiled from GIS databases maintained by the Nova Scotia Department of Natural Resources (Renewable Resources Branch, Land Services Branch and Minerals and Energy Branch).

The Nova Scotia Department of Natural Resources accepts no liability for errors, deficiencies or faults on the map. Since land-use information is dynamic and subject to change over time, updated versions of this map will be provided in the future. This map should not be used for legal purposes and should only be used at the scale portrayed on the map.



Federal Crown Designations

- National Parks
- National Historic Parks
- National Wildlife Management Areas
- Migratory Bird Sanctuaries
- National Defence Lands
- Major Airports

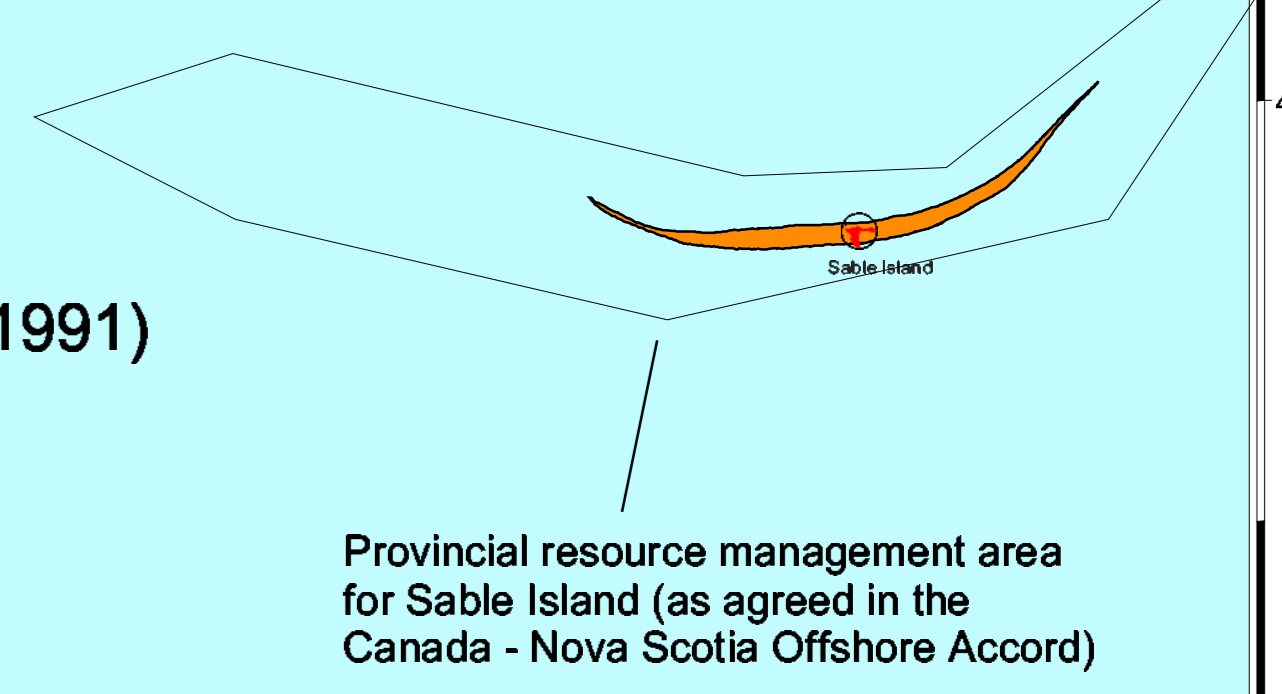
Provincial Crown Designations

- Provincial Parks or Park Reserves
- Provincial Wildlife Management Areas
- Nature Reserves and Sites of Ecological Significance
- Protected Wilderness Areas
- Water Supply Areas
- Designated Beaches

Undesignated Crown Land (1991)

Crown \ Private Lands

- Abandoned Rail Corridors
- Private Land
- Urban Areas
- Nature Conservancy Areas
- Major Indian Reserves



Provincial resource management area for Sable Island (as agreed in the Canada - Nova Scotia Offshore Accord)