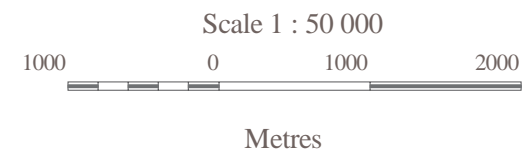


MINERAL RESOURCE LAND-USE MAP OF THE MALIGNANT COVE AREA (11E/16) (1:50 000) OFM ME 2000-4 (11E/16) Version 2

11E/16 Malignant Cove

Compiled by D.B. Hopper, F.J. Bonner, B.E. Fisher and A.N. Murphy Halifax, Nova Scotia



A total of 59 thematic (1:50 000 scale) Mineral Resource Land Use (MRLU) maps combine to form a thematic atlas, which covers the province of Nova Scotia including all near-shore islands and Sable Island.

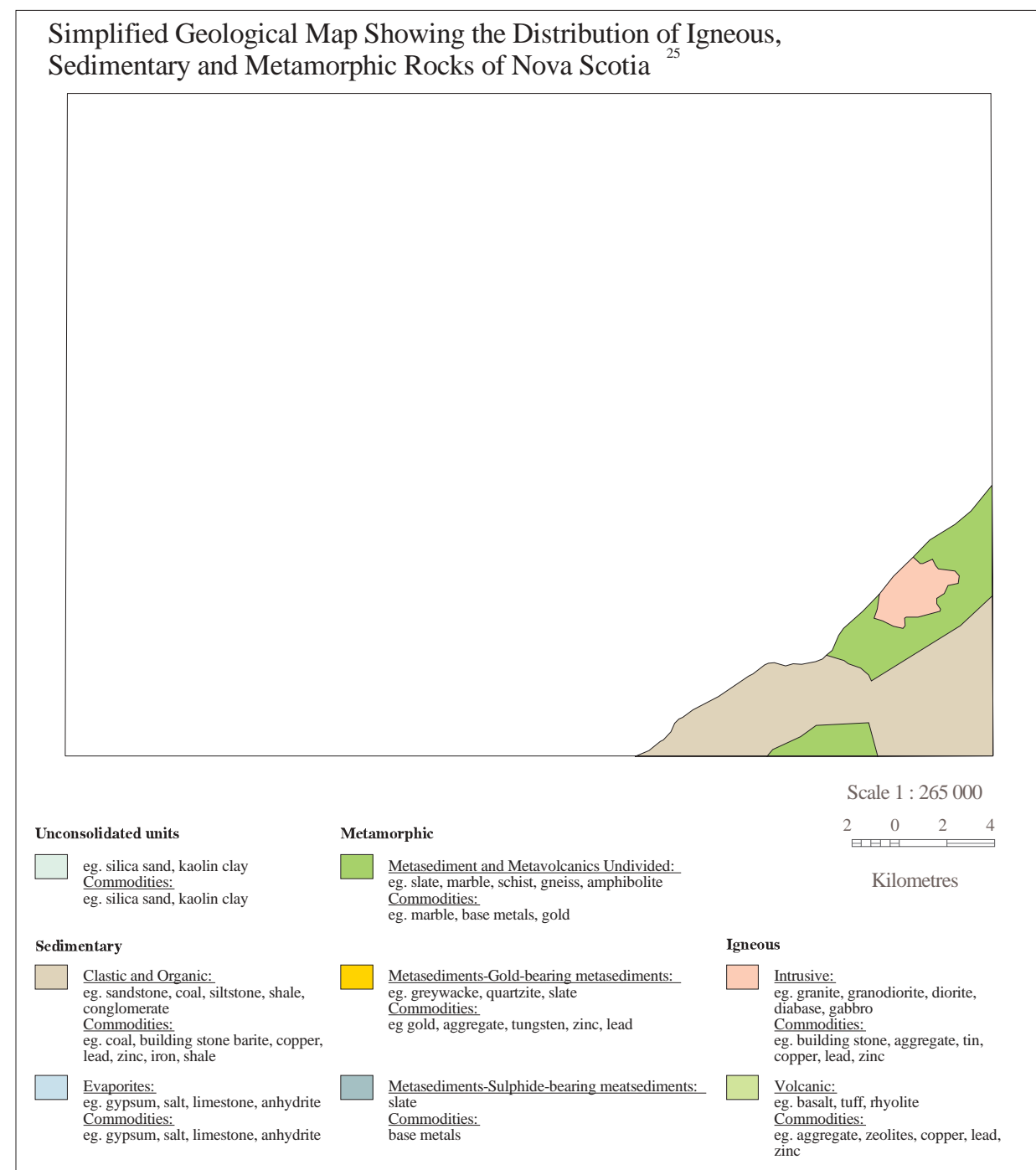
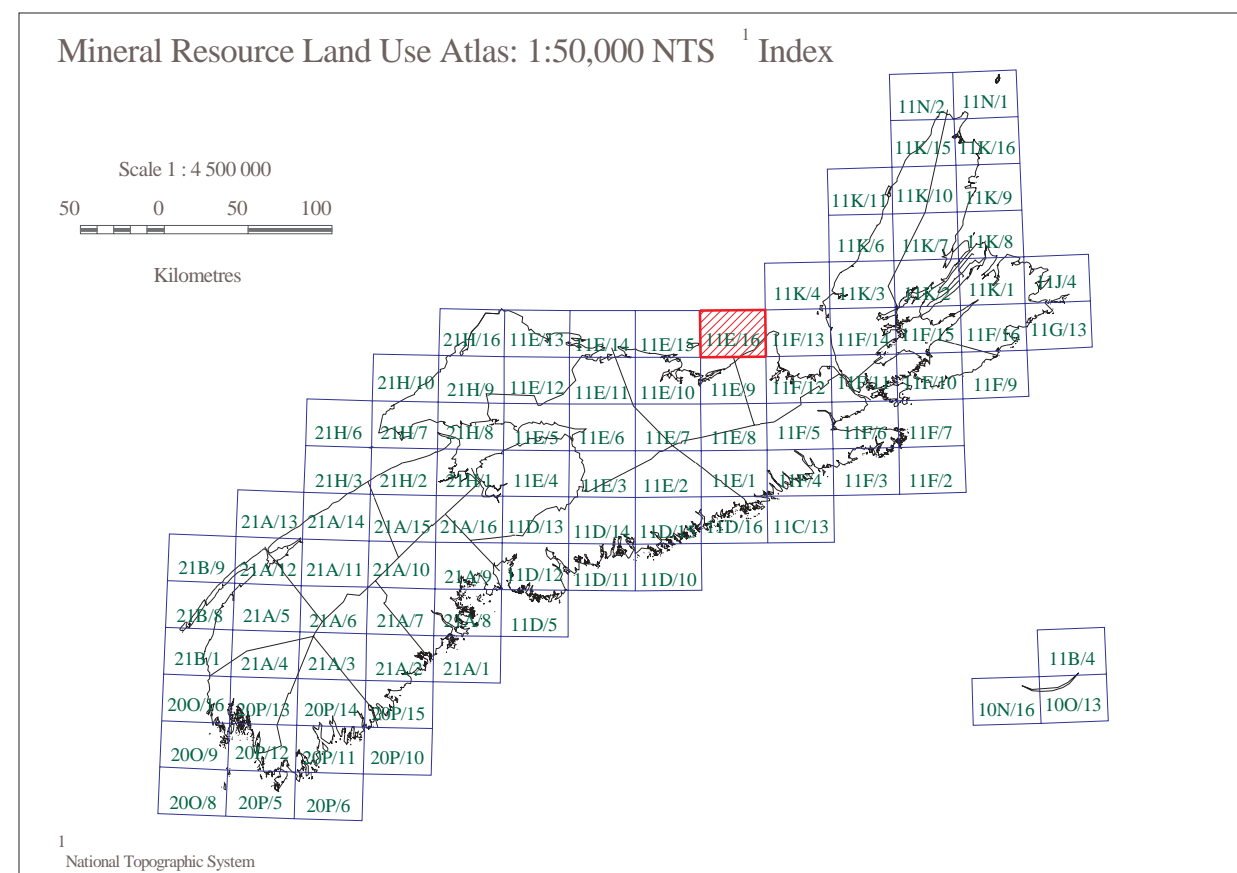
The MRLU maps display the location and distribution of mineral and energy resources and related activities as well as aspects of environmental geology that relate to land use and environmental planning.

Over the course of developing this project, several companies have contributed to the preparation of these maps, which involved gathering and organizing data from databases managed by the department as well as other government departments, agencies and non-government organizations.

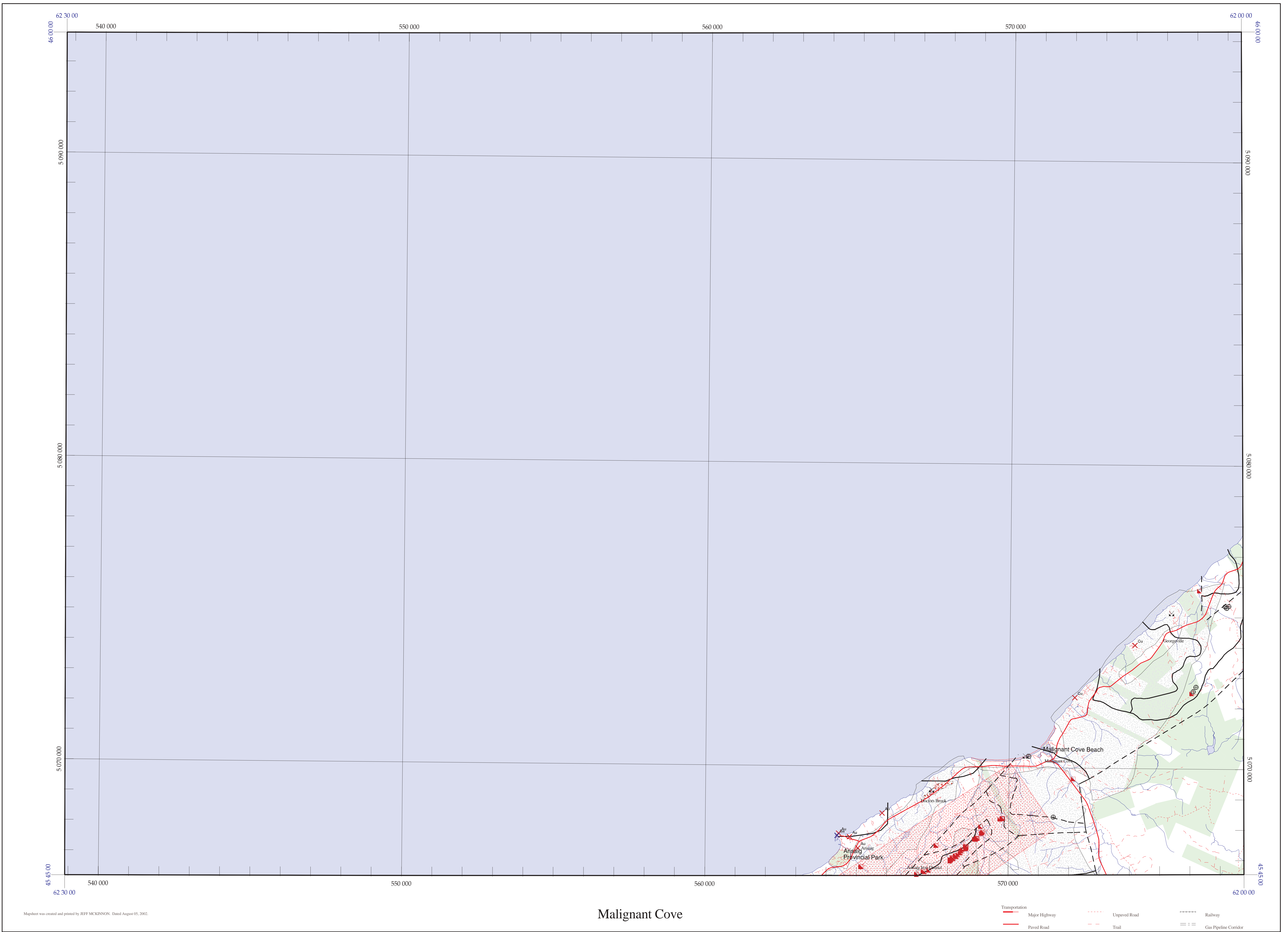
Base data derived from the Nova Scotia Topographic Database (NSTDB). Copyright Her Majesty the Queen in Right of the Province of Nova Scotia. The NSTDB is available from the Service Nova Scotia & Municipal Relations, Nova Scotia Geomatics Centre (NSGC), Antigonish, Nova Scotia.

This map was generated from information stored in the Mineral Resources Branch (MRB) Geographic Information System of the Nova Scotia Department of Natural Resources (NSDNR).

The thematic information shown on this map came from many different government and non-government sources. The NSDNR accepts no liability for errors, deficiencies or faults on the map. Since land-use information is dynamic, and subject to change over time, updated versions of this map will be provided in the future.



- References and Notes
1. Mineral occurrence database, NSDNR, 1999. Digital Geoscience Data Product DP001b, Version 3, 1998.
2. Databases used with FPO16, the Mineral Occurrence Query Program, which is a viewing and searching program with instructional manual for use with Mineral Occurrence Database.
3. Chain Reference Maps, Mineral and Petroleum Titles, NSDNR, undated. Scale 1:31 690.
4. Grid and iron districts are no longer a legal entity, although the term is still used in the literature...



Malignant Cove

MINERAL AND AGGREGATE RESOURCES

- Mineral Occurrence (metallic, non-metallic)
Active Mine/Quarry (metallic, non-metallic) (lease/permit boundary)
Gold Mining Area (former gold district)
Iron Mining Area (former iron district)
Crown Limestone Area
Sand/Gravel Deposit
Aggregate Pit/Quarry
Horticultural Peat Occurrence

ENERGY RESOURCES

- Active Coal Mine (lease/permit boundary)
Coal Seam Trace
Fuel Peat Occurrence
Geothermal Resource Area
Surface Petroleum Show
Well /Drill hole with Petroleum Significance
Underground Gas Storage (exploration area, exploration permit)
Faults

GEOLOGY FOR LAND-USE / ENVIRONMENTAL PLANNING

- Areal Extent of Underground Coal Mine Workings
Abandoned Underground Mine Opening (metallic, non-metallic, coal)
Abandoned/Inactive Surface Mine/Quarry (Data is not available at this time)
Reclaimed Surface Mine Site (Data is not available at this time)
Drill Hole
Sulphide-bearing Slate
Geological Contacts
Faults

LAND DESIGNATION AND ACCESS

- Protected Area (Strictly no access to commercial and industrial use by order of legislation, regulation, policy or private interests)
Exposed Bedrock/Thin Till Cover
Drumlin
Flood Risk Area (20 yr. flood level)
Limited Access Area (Access is possible although certainty of tenure will vary. Areas are usually identified for specific interests and access permission could be limited by owner, operator, or special interest depending upon the proposed activity.)
Water Supply Watershed Intake
Water Supply Well (Municipal)
General Access Area (This includes all province-owned land that has not been designated as protected or limited use.)
Privately Owned Land