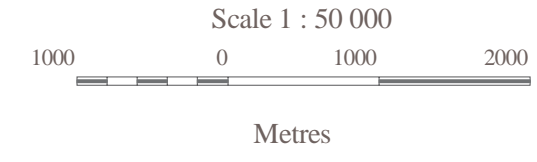


MINERAL RESOURCE LAND-USE MAP
OF THE PUBNICO AREA (20P/12) (1:50 000)

OFM ME 2000-4 (20P/12)
Version 2

20P/12
Pubnico

Compiled by
D.B. Hopper, F.J. Bonner, B.E. Fisher and A.N. Murphy
Halifax, Nova Scotia



A total of 98 thematic (1:50 000 scale) Mineral Resource Land Use (MRLU) maps combine to form a thematic atlas which covers the province of Nova Scotia including all near-shore islands and Sable Island. The main purpose in preparing this Atlas is to provide the public with a simple geographic compilation of mineral resource and related land-use information at a reasonably detailed scale. A key objective is to create a useful reference for practitioners working in land-use and environmental planning, geotechnical firms and groups involved in community economic development.

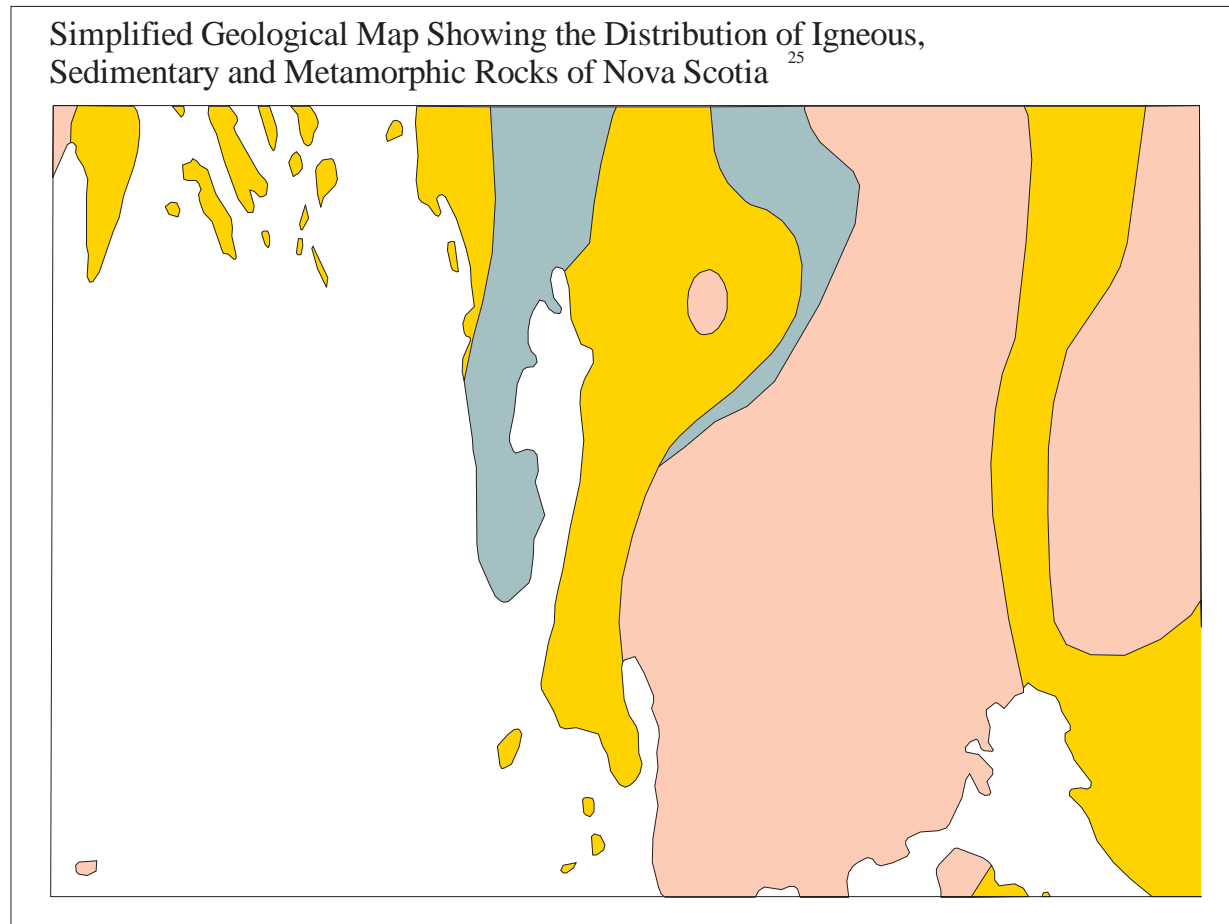
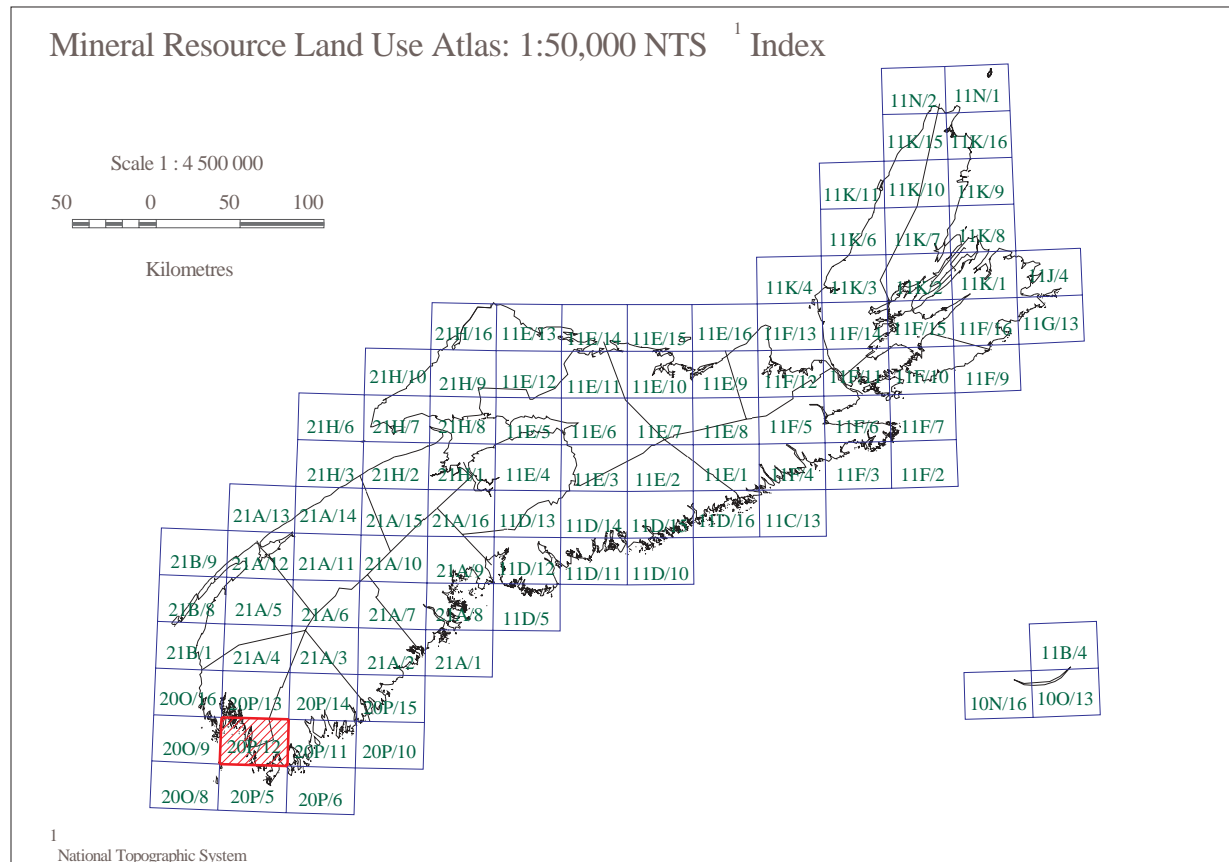
The MRLU maps display the location and distribution of mineral and energy resources and related activities as well as aspects of environmental geology that relate to land-use and environmental planning. Special land-use designations on Crown and some privately-owned land are shown to indicate how Nova Scotia's land base varies regarding the ability of mineral resource interests to access land and full secure status. Please note: Because these maps were compiled from many different data sources with different scales and projections, some of the overlapping thematic data appears "distorted" relative to each other.

Over the course of developing this project, several companies have contributed to the preparation of these maps, which involved gathering and organizing data from databases managed by the department as well as other government departments, agencies and non-government organizations. The mineral companies included David Hopper, Cheryl Dubois, Geoffrey Katz, Hugh Galin, Fred Bonner, Janet Webster, and Mia Nyquist. The digital companies include: Fred Bonner, Brian Fisher, Beth Wallace, Lou Hills, Angela Murphy and Jeffrey McKinnon. For maps and data layers should be directed by Nova Scotia Department of Natural Resources, Library, PO Box 698, Halifax, Nova Scotia, B3J 2Y9. Telephone: (902) 424-8188; Fax: (902) 424-3375; E-Mail: mdr@novascotia.ca.

Base data derived from the Nova Scotia Topographic Database (NSTDB). Copyright Her Majesty the Queen in Right of the Province of Nova Scotia. The NSTDB is available from the Service Nova Scotia & Municipal Relations, Nova Scotia Geographic Centre (NSGC), Antigonish, Nova Scotia.

This map was generated from information stored in the Mineral Resources Branch (MRB) Geographic Information System of the Nova Scotia Department of Natural Resources (NSDNR).

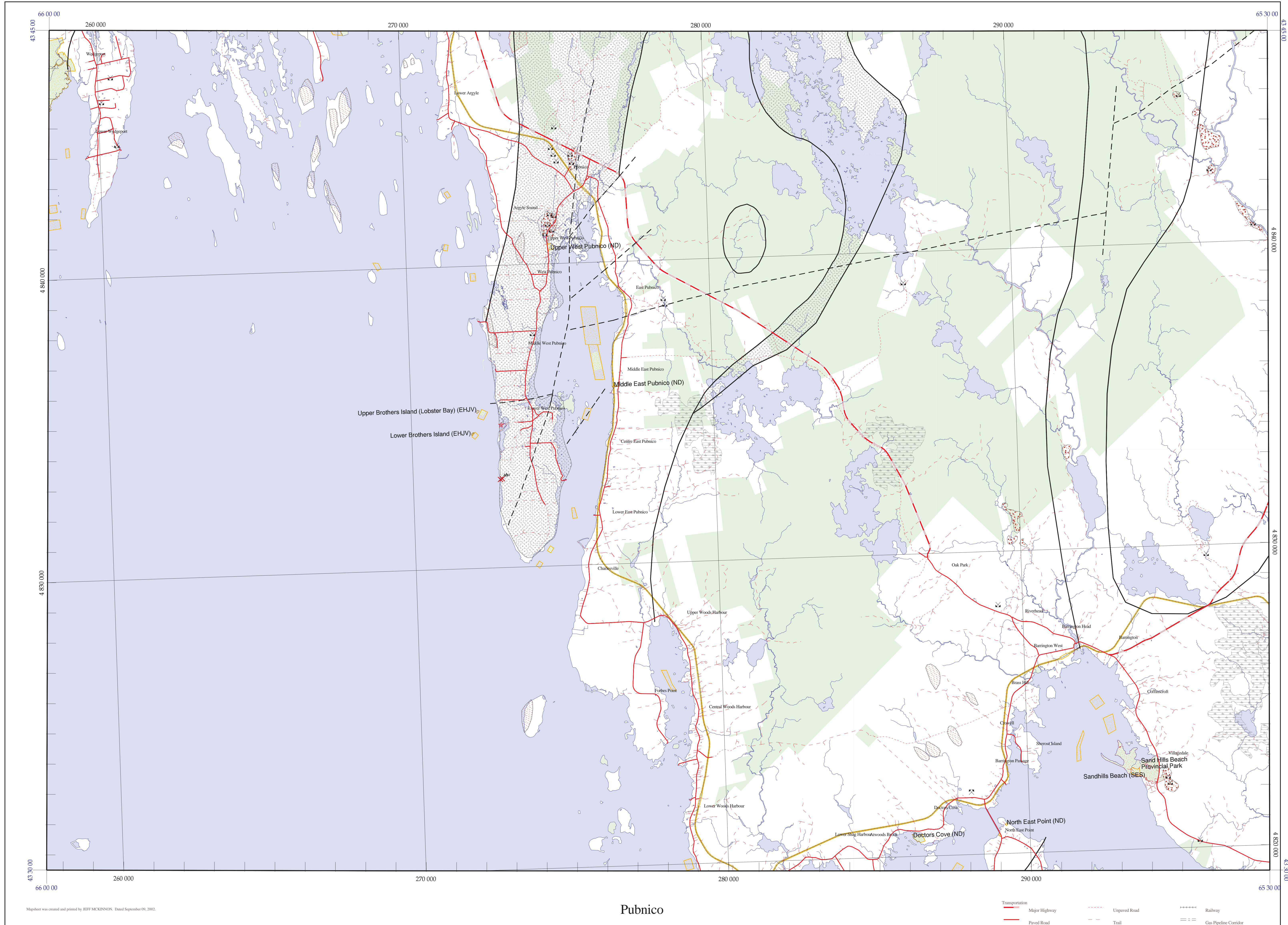
The thematic information shown on this map came from many different government and non-government sources. The NSDNR accepts no liability for errors, omissions or faults on the map. Since land-use information is dynamic and subject to change over time, updated versions of this map will be provided in the future. This map should not be used for legal purposes and should only be used at the scale portrayed on the map.



Legend for geological map with categories: Unconsolidated units, Metamorphic, Sedimentary, and Igneous. Each category lists rock types and their corresponding colors/patterns.

- References and Notes
Mineral occurrence database, NSDNR, 1999.
Digital Geospatial Data Product DP0018, Version 3, 1998.
Databases used with DP0018: the Mineral Occurrence Query Program, which is a viewing and searching program with instructional manual for use with Mineral Occurrence Database.
Surface Geology of Nova Scotia, J.F. Fowler and G.B. Dickie, 1978.
Digital data set provided by NSDNR, Mineral Development and Policy Section.

- MINERAL AND AGGREGATE RESOURCES
Active Mine Quarry (metallic, non-metallic)
Gold Mining Area (former gold district)
Iron Mining Area (former iron district)
Crown Limestone Area
Sand/Gravel Deposit
Aggregate Pit/Quarry
Horticultural Peat Occurrence



- ENERGY RESOURCES
Active Coal Mine (lease/permit boundary)
Coal Seam Trace
Fuel Peat Occurrence
Geothermal Resource Area
Surface Petroleum Show
Well /Drill hole with Petroleum Significance
Underground Gas Storage (exploration area, exploration permit)

- GEOLOGY FOR LAND-USE / ENVIRONMENTAL PLANNING
Areal Extent of Underground Coal Mine Workings
Abandoned Underground Mine Opening (metallic, non-metallic, coal)
Abandoned/Inactive Surface Mine/Quarry (Data is not available at this time)
Reclaimed Surface Mine Site (Data is not available at this time)
Drill Hole
Sulphide-bearing Slate
Geological Contacts
Faults

- LAND DESIGNATION AND ACCESS
Protected Area
Exposed Bedrock/Thin Till Cover
Drumlin
Flood Risk Area (20 yr. flood level)
Water Supply Watershed Intake
Water Supply Well (Municipal)
General Access Area
Privately Owned Land

The land owner's permission is required to gain access to any land in Nova Scotia. (Strictly to access to commercial and industrial use by order of legislation, regulation, policy or private interest.)

National Parks and Adjacent Areas, National Historic Site and Parks, National Wildlife Management Areas, National Defence Land, National Wildlife Sanctuaries, Designated Provincial Park and Park Reserve, Wilderness Area, Protected Beaches, Mineral Closure Areas, Copropriety of Canada (NOC), Areas under the Specific Places Act, Flight 111 Act.

Provincial Game Sanctuaries, Provincial Wildlife Management Areas, Water Supply Areas, Designated and Non-Designated, Canadian Heritage Rivers, Indian Reserve Lands, Urban Areas, Sites of Ecological Significance (SES), Prairie/Cove Preservation Areas, Aquacultural Areas, Pipeline Corridor, Operational Non-Designated Parks and Reserves (NOC), Non-Designated Rail Corridors, Ramsar Wetland Sites, Liasium Habitat Joint Venture Lands (EHJV) and Trails Act Lands.