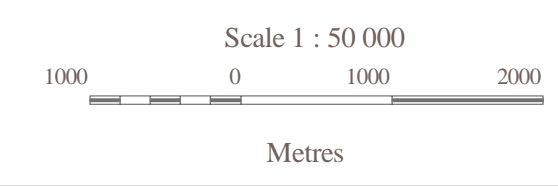


MINERAL RESOURCE LAND-USE MAP OF THE LAKE ROSSIGNOL AREA (21A/3) (1:50 000)

OFM ME 2003-4 (21A/3) Version 2

21A/3 Lake Rossignol

Compiled by D.B. Hopper, F.J. Bonner, B.E. Fisher and A.N. Murphy Halifax, Nova Scotia

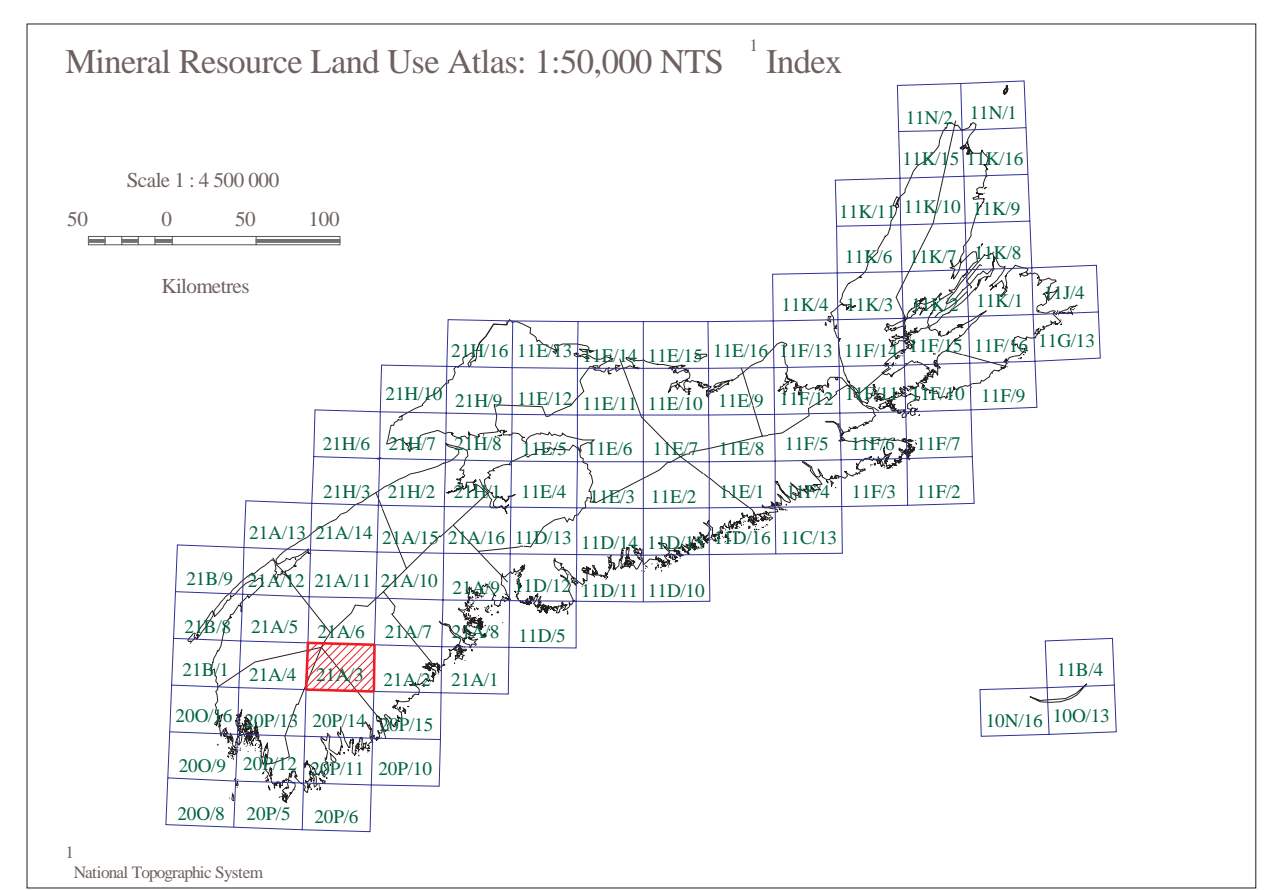


A total of 98 thematic (1:50 000 scale) Mineral Resource Land Use (MRLU) maps combine to form a thematic atlas, which covers the province of Nova Scotia including all near-shore islands and Sable Island.

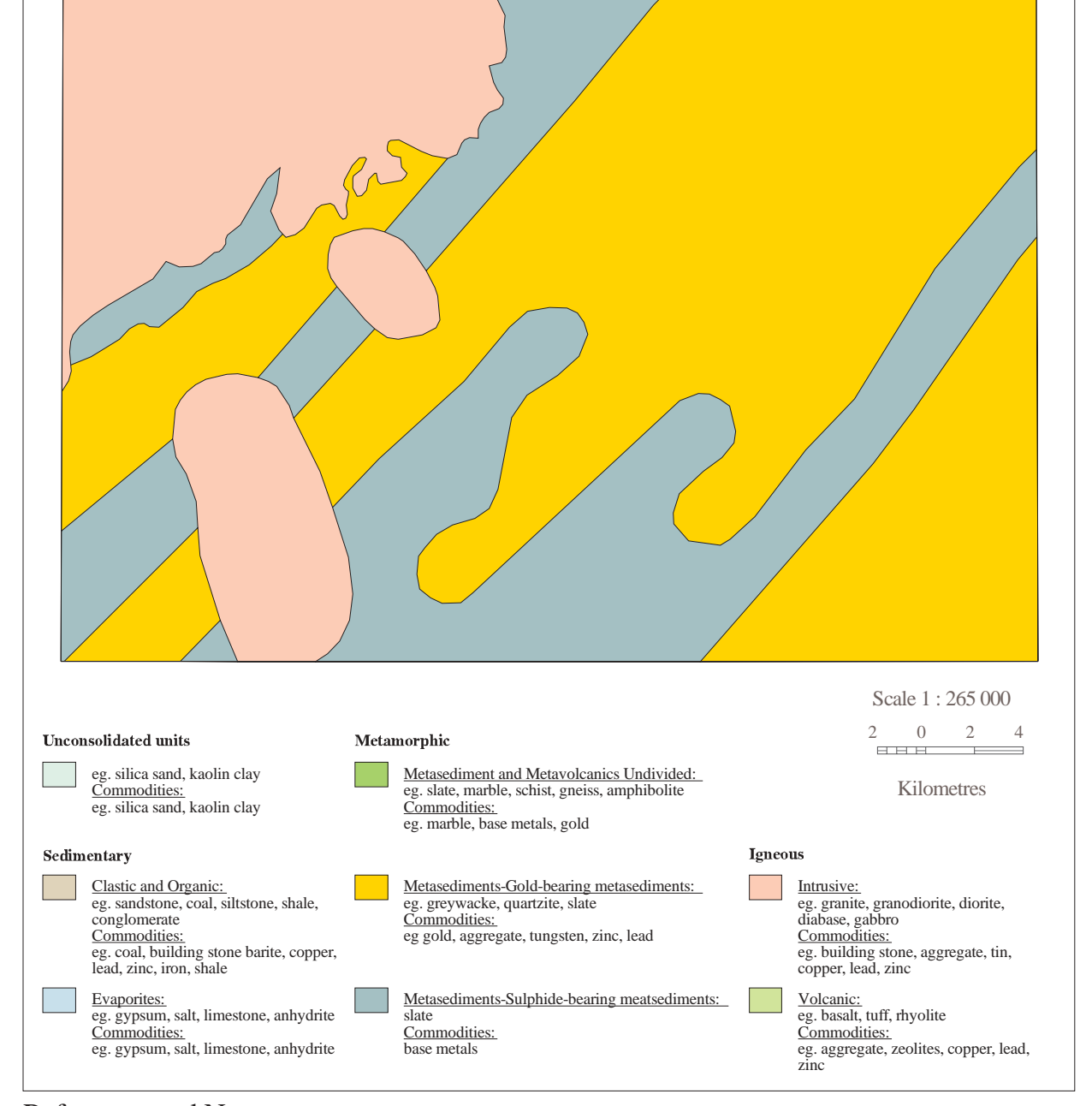
Over the course of developing this project, several companies have contributed to the preparation of these maps, which involved gathering and organizing data from databases managed by the department as well as other government departments, agencies and non-government organizations.

Base data derived from the Nova Scotia Topographic Database (NSTDB). Copyright Her Majesty the Queen in Right of the Province of Nova Scotia.

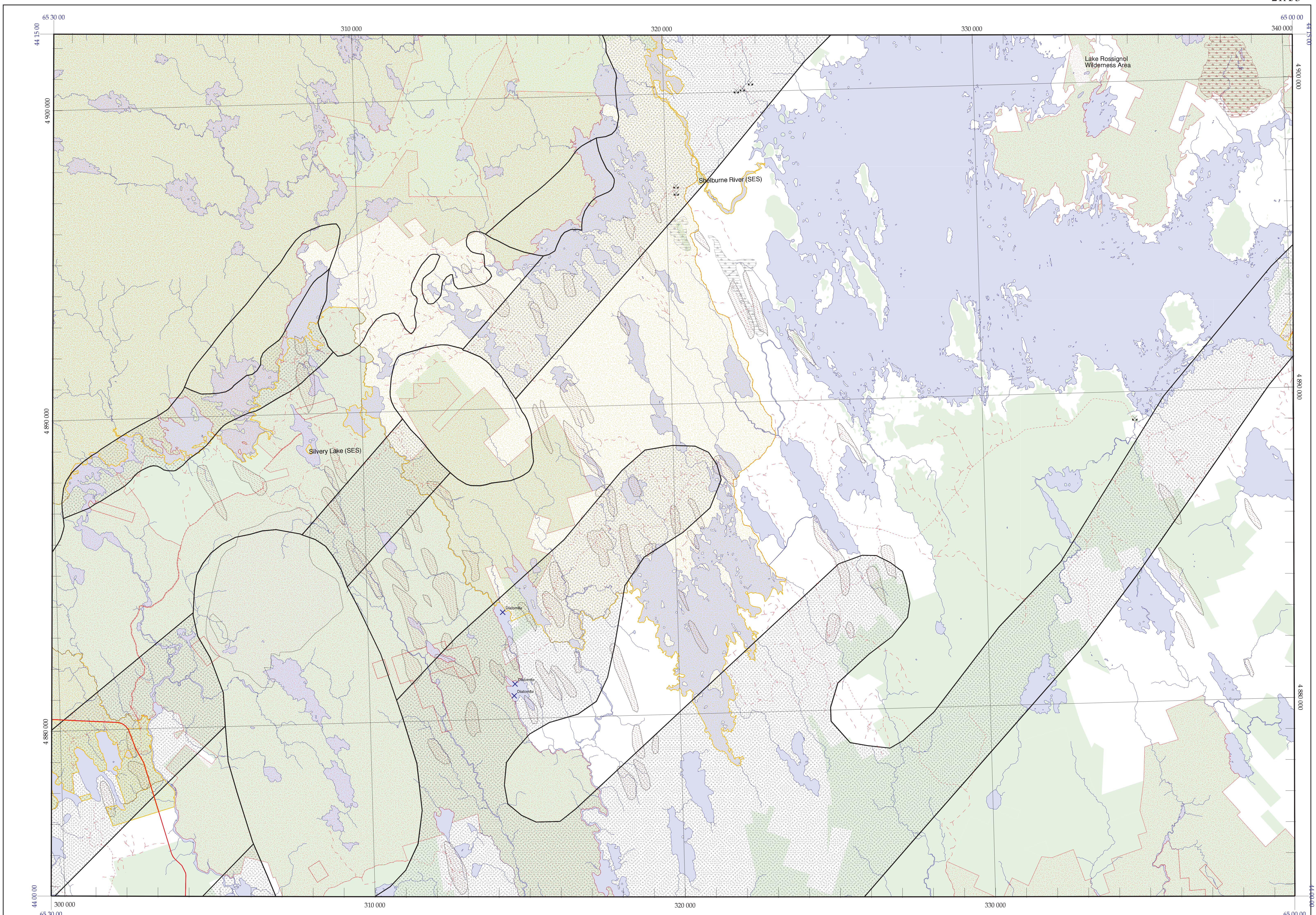
This map was generated from information stored in the Mineral Resources Branch (MRB) Geographic Information System of the Nova Scotia Department of Natural Resources (NSDNR).



Simplified Geological Map Showing the Distribution of Igneous, Sedimentary and Metamorphic Rocks of Nova Scotia



References and Notes: Mineral occurrence database, NSDNR, 1999. Digital Geoscience Data Product DP001B, Version 3, 1998. This database can be used with DP010, the Mineral Occurrence Query Program, which is a viewing and searching program with instructional manual for use with Mineral Occurrence Database.



Lake Rossignol



Table with four columns: MINERAL AND AGGREGATE RESOURCES, ENERGY RESOURCES, GEOLOGY FOR LAND-USE / ENVIRONMENTAL PLANNING, and LAND DESIGNATION AND ACCESS. Each column contains symbols and descriptions for various resource and land-use categories.