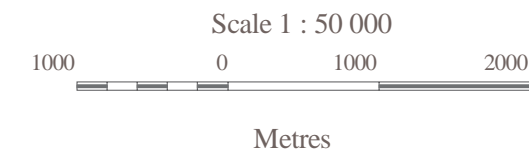


MINERAL RESOURCE LAND-USE MAP OF THE ALMA AREA (21H/10) (1:50 000)

OFM ME 2000-4 (21H/10) Version 2

21H/10 Alma

Compiled by D.B. Hopper, F.J. Bonner, B.E. Fisher and A.N. Murphy Halifax, Nova Scotia



A total of 59 thematic (1:50,000 scale) Mineral Resource Land Use (MRLU) maps combine to form a thematic atlas, which covers the province of Nova Scotia including all near-shore islands and Sable Island.

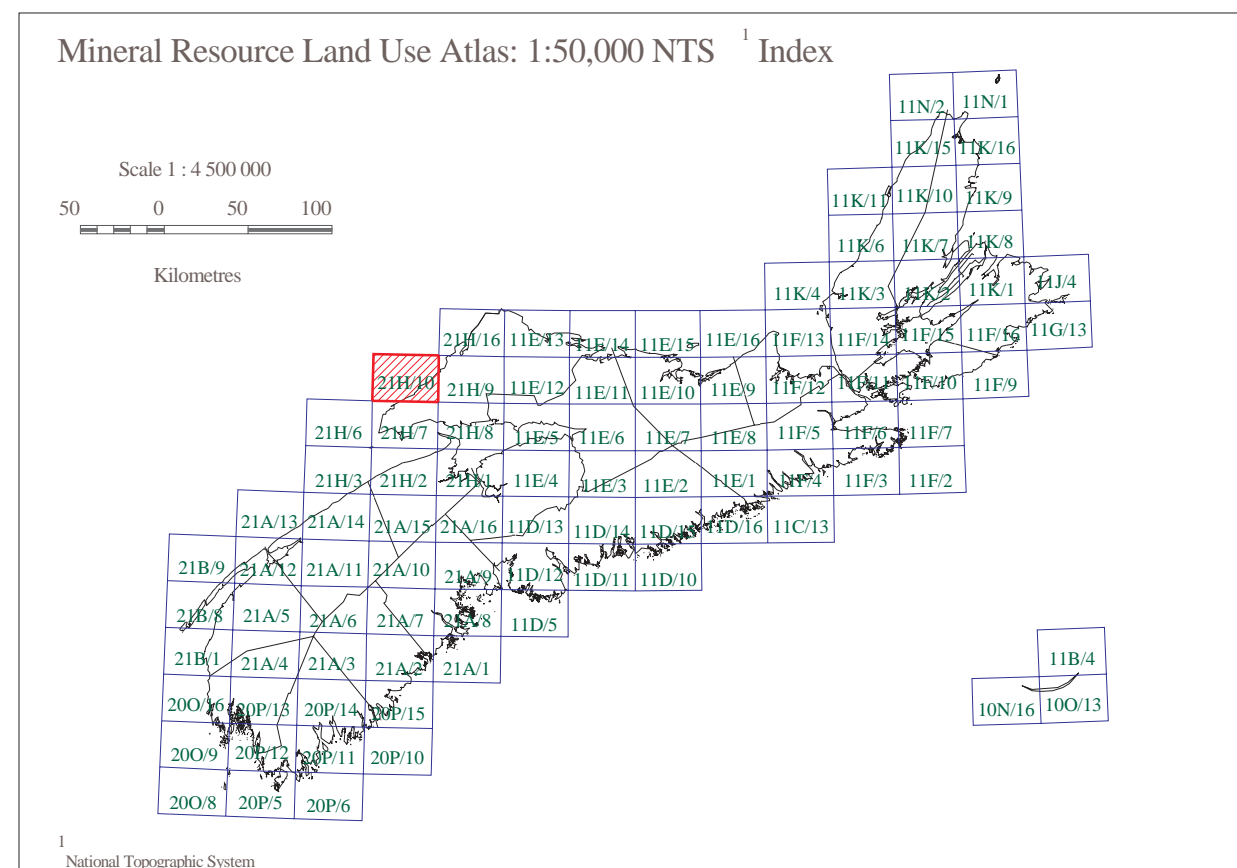
The MRLU maps display the location and distribution of mineral and energy resources and related activities as well as aspects of environmental geology that relate to land use and environmental planning.

Over the course of developing this project, several companies have contributed to the preparation of these maps, which involved gathering and organizing data from databases managed by the department as well as other government departments, agencies and non-government organizations.

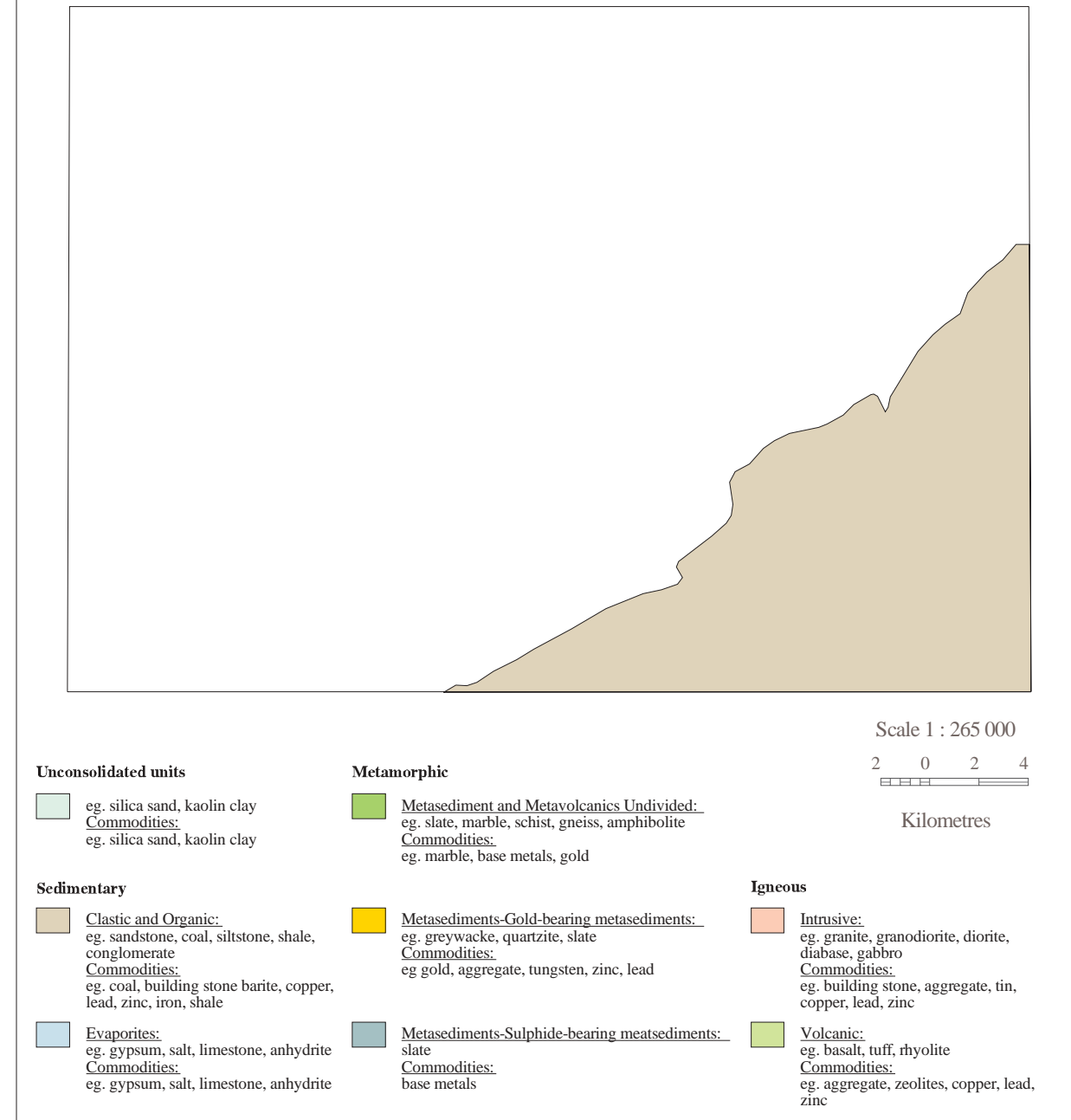
Base data derived from the Nova Scotia Topographic Database (NSTDB). Copyright Her Majesty the Queen in Right of the Province of Nova Scotia.

This map was generated from information stored in the Mineral Resources Branch (MRB) Geographic Information System of the Nova Scotia Department of Natural Resources (NSDNR).

The thematic information shown on this map came from many different government and non-government sources. The NSDNR accepts no liability for errors, deficiencies or faults on the map.

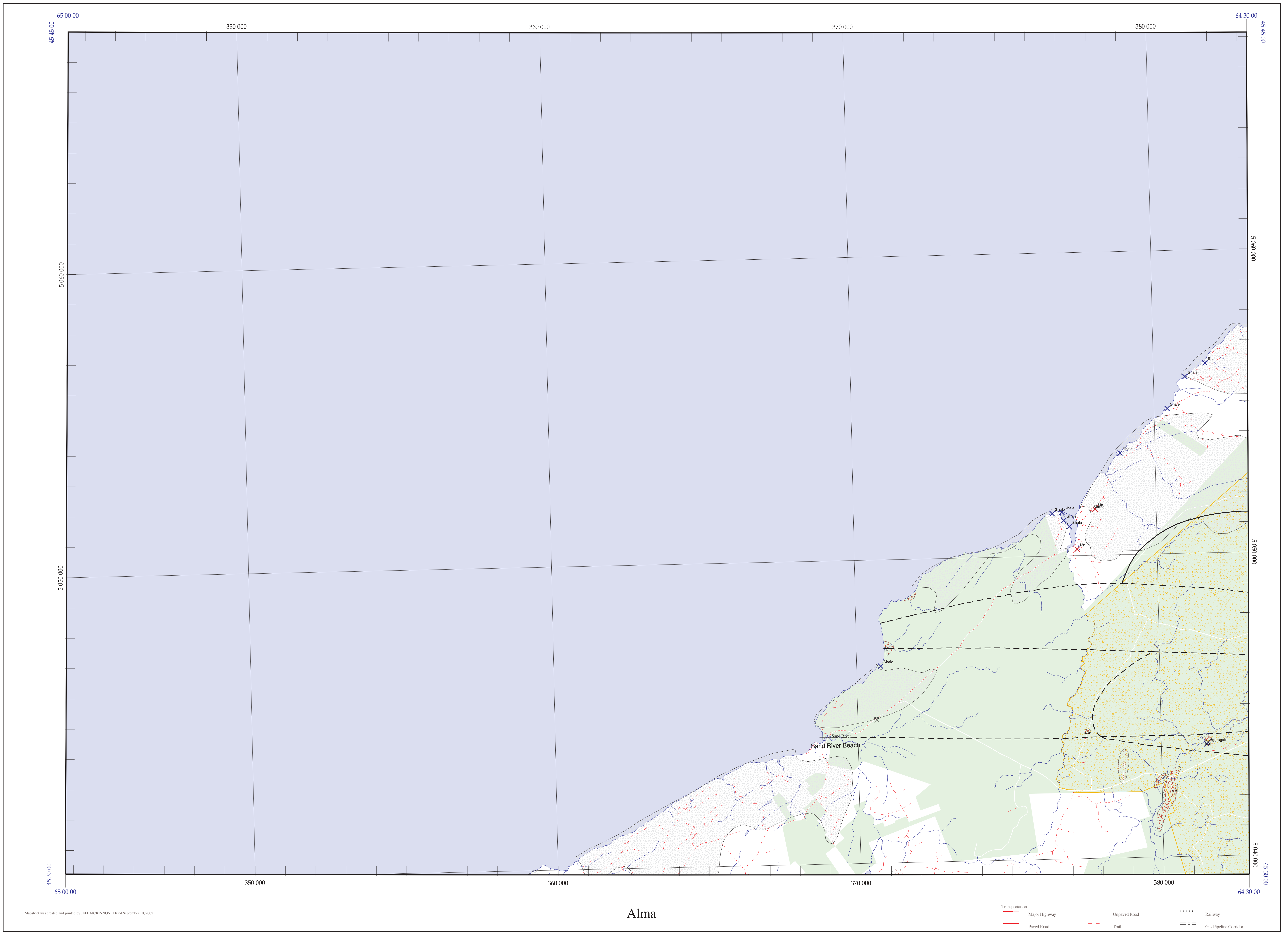


Simplified Geological Map Showing the Distribution of Igneous, Sedimentary and Metamorphic Rocks of Nova Scotia



References and Notes

- Mineral occurrence database. NSDNR, 1999. Digital Geoscience Data Product DP001b, Version 3, 1998. This database can be used with FPO16, the Mineral Occurrence Query Program, which is a viewing and searching program with instructional manual for use with Mineral Occurrence Database. See: http://www.gov.ns.ca/naturalresources/minerals.htm



Mapsheet was created and printed by JEFF MCKINNON. Dated September 10, 2002.

MINERAL AND AGGREGATE RESOURCES

- Mineral Occurrence (metallic, non-metallic) 1
- Active Mine/Quarry 2 (metallic, non-metallic) (lease/permit boundary)
- Gold Mining Area 3 (former gold district)
- Iron Mining Area 3 (former iron district)
- Crown Limestone Area 2
- Sand/Gravel Deposit 5A7
- Aggregate Pit/Quarry 5A7
- Horticultural Peat Occurrence 4

ENERGY RESOURCES

- Active Coal Mine 2 (lease/permit boundary)
- Coal Seam Trace 4
- Fuel Peat Occurrence 4
- Geothermal Resource Area 2
- Surface Petroleum Show 9
- Well /Drill hole with Petroleum Significance 9B
- Underground Gas Storage 2 (exploration area, exploration permit)
- Faults 11

GEOLOGY FOR LAND-USE / ENVIRONMENTAL PLANNING

- Areal Extent of Underground Coal Mine Workings 8
- Abandoned Underground Mine Opening 11 (metallic, non-metallic, coal)
- Abandoned/Inactive Surface Mine/Quarry 8 (Data is not available at this time)
- Reclaimed Surface Mine Site 8 (Data is not available at this time)
- Drill Hole 12
- Sulphide-bearing Slate 13A1
- Geological Contacts 2B
- Faults 11

LAND DESIGNATION AND ACCESS

- Potential Karst Area 13A5
- Exposed Bedrock/Thin Till Cover 16
- Drumlin 16
- Flood Risk Area 17 (20 yr. flood level)
- Water Supply Watershed Intake 17A9
- Water Supply Well 17 (Municipal)
- Special Geological Interest 18
- Protected Area (Strictly to access to commercial and industrial use by order of legislation, regulation, policy or private interest)
- National Parks and Adjuncts 20, National Historic Site and Parks 20, National Wildlife Management Areas 20, National Defence Land 20, National Wildlife Sanctuaries 20, Designated Provincial Park and Park Reserve 20, Wilderness Areas 20, Protected Beaches, Mineral Closure 20, Name Conservancy of Canada (NCC) 20, Areas under the Special Places Act 20, Flight 111 Act
- Limited Access Area (Access is possible although certainty of tenure will vary. Areas are usually identified for specific interests and access permission could be limited by owner, operator, or special interest depending upon the proposed activity.)
- Provincial Game Sanctuaries 20, Provincial Wildlife Management Areas 20, Water Supply Areas 20, Canadian Heritage Sites and Parks 20, Indian Reserve Lands 20, Urban Areas 20, Sites of Ecological Significance (SES) 20, Peggy's Cove Preservation Area, Aquacultural Areas, Pipeline Corridor, Operational Non-Designated Parks and Reserves (NCC), Non-Designated Rail Corridor 20, Ramsar Wetland Sites 20, Liasium Habitat Joint Venture Lands (EHV) 20 and Trails Act Lands 20
- General Access Area (This includes all province-owned land that has not been designated as protected or limited use.)
- Privately Owned Land

1 Data sets digitized from maps provided by the Canadian Department of National Defence. 2 Data set provided by the Nova Scotia Department of Agriculture and Fisheries. 3 "Revised and Limited Use Land Database, NSDNR, Digital Data Product DP DNR 002, 2002. See: http://www.gov.ns.ca/naturalresources/minerals.htm" 4 NSDNR, Renewable Resources Branch, Parks and Recreation Division. 5 Nova Scotia Department of Environment and Labour, Protected Areas Division. 6 NSDNR, Land Services Branch, Surveys Division. 7 Parks Canada. 8 NSDNR, Renewable Resources Branch, Wildlife Division. 9 NSDNR and Canadian Wildlife Services. 10 Nature Conservancy of Canada. 11 NSDNR, Mineral Resources Branch.