

Airborne Magnetic Total Field Map for NTS 21H/09, Springhill Area, Nova Scotia

M. S. King

Scale 1:50 000



Halifax, Nova Scotia



© Her Majesty the Queen in Right of the Province of Nova Scotia 2005

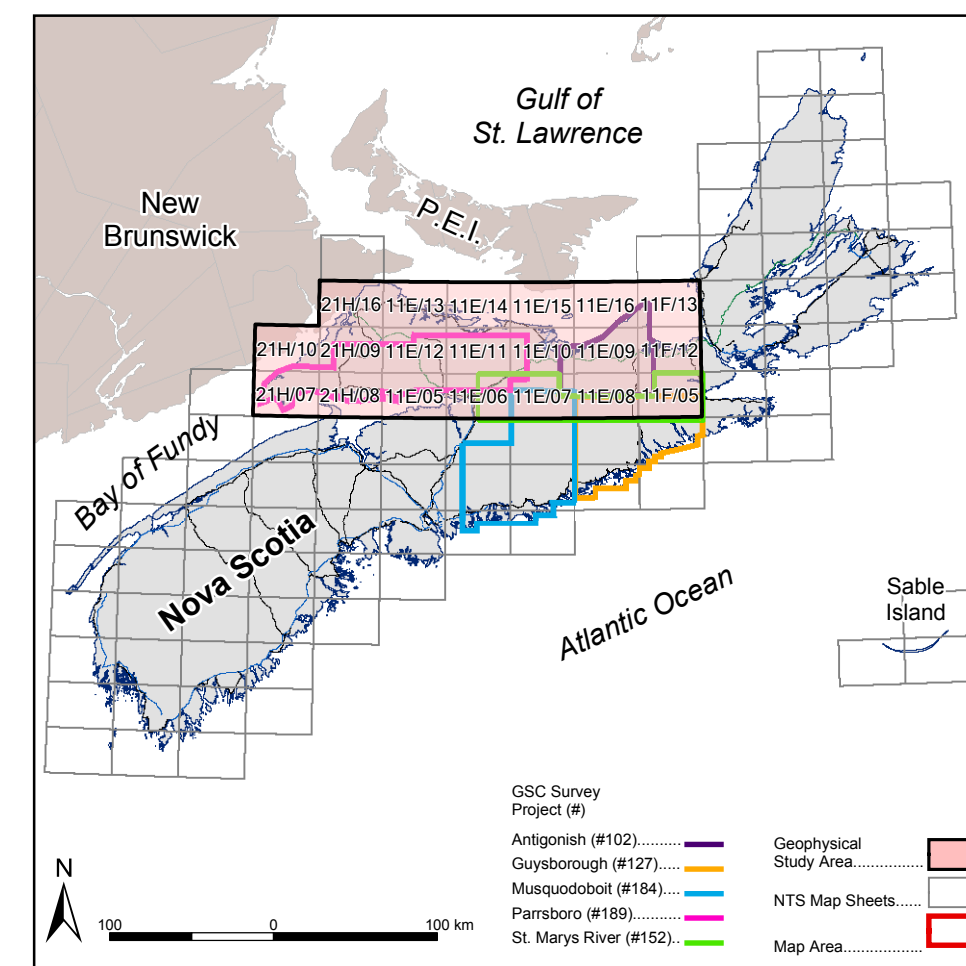
Airborne Magnetic Data Total Field

Airborne geophysical data, used to produce this map, were supplied by the Geological Survey of Canada (GSC) - Geophysical Data Centre, 615 Booth St., Ottawa, Ontario K1A 0E9. These high-resolution magnetic data were digitally acquired as part of the Paraboro Survey (GSC Project #189). Map coverage was locally augmented by older vintage GSC analogue data. The map image was produced from the levelled and decontoured measured magnetic total field. The 24-bit colour map image was produced with a 10 m pixel size. Shading was from the south at 30° above the horizon. For complete details please refer to Open File Report by King (2004).

Reference

For more information on this map series, refer to:
King, M. S., 2004: Report on potential field mapping component of the geological mapping of the St. Marys Basin Project, northern mainland Nova Scotia, Phase 2 of the Targeted Geoscience Initiative, Nova Scotia Department of Natural Resources, Mineral Resources Branch, Open File Report ME 2004-4.

Regional Key Map



Map Notes

Universal Transverse Mercator Projection (UTM), Zone 20, Central Meridian 63°00' West.
North American Datum (NAD) 1927.

Base and digital data derived from the Nova Scotia Topographic Database (NSTDB). The NSTDB is available from Service Nova Scotia and Municipal Relations (SNSMR), Land Information Services Division (LIS), Nova Scotia Geomatics Centre (NSGC), Amherst, Nova Scotia.

Funded by Natural Resources Canada and Nova Scotia Department of Natural Resources under the Targeted Geoscience Initiative (Phase 2) Project: Geological Mapping and Resource Evaluation in Central Nova Scotia, 2004-2005.

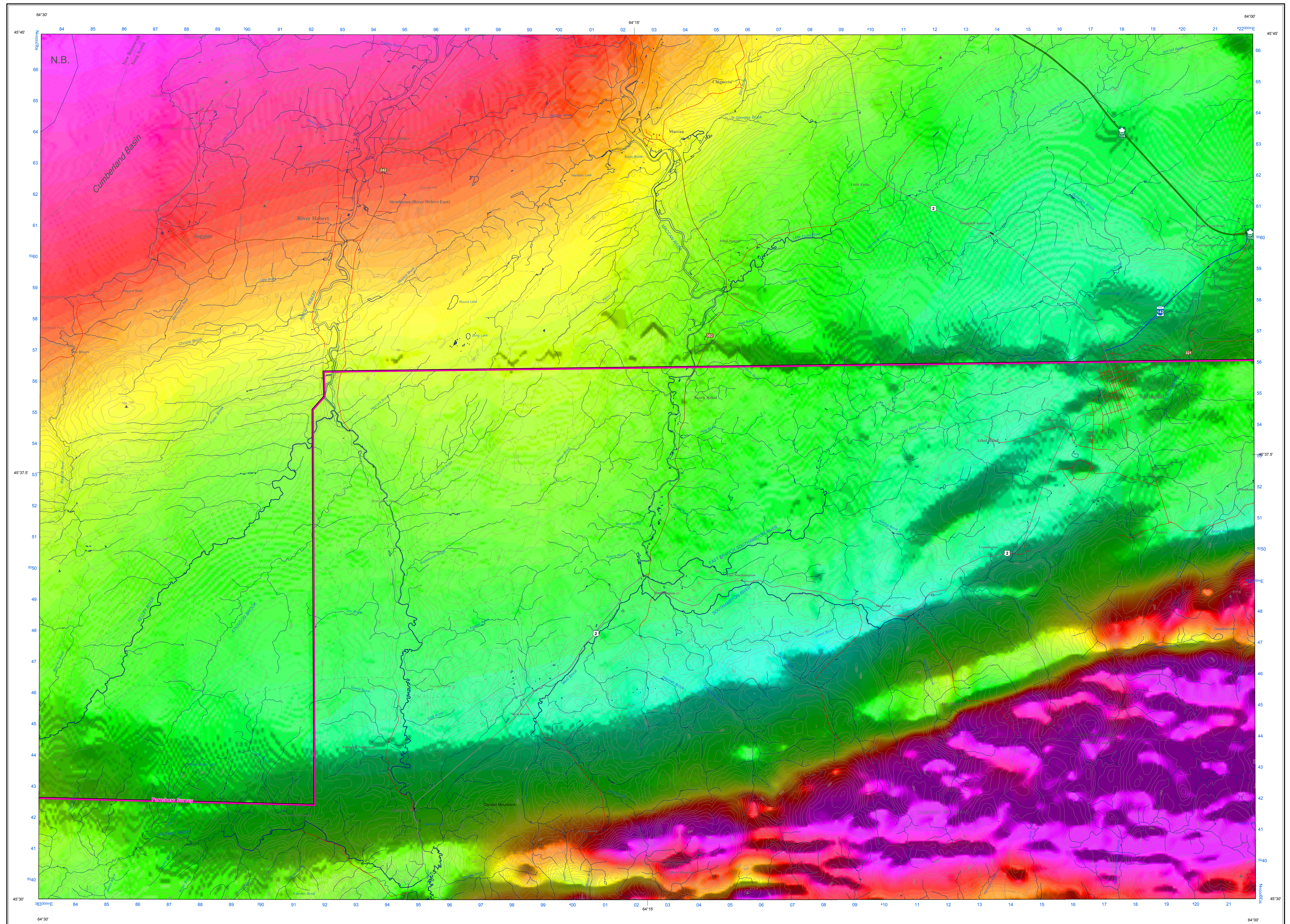
Cartography and reproduction by Nova Scotia Department of Natural Resources, Geoscience Information Services Section, 2004-2005.

Disclaimer

The information on this map may have come from a variety of government and nongovernment sources. The Nova Scotia Department of Natural Resources does not assume any liability for errors that may occur.

Recommended Citation

King, M.S. 2005: Airborne magnetic total field map for NTS 21H/09, Springhill area, Nova Scotia, Nova Scotia Department of Natural Resources, Mineral Resources Branch, Open File Map ME 2005-18, scale 1:50 000.



Legend

- Spot Height
 - Contour
 - Depression Contour
 - Index Contour
 - Index Depression Contour
 - Coastline, Lakes, Single-line Rivers, Streams
 - 100 Series Highway
 - Trans-Canada Highway
 - Trunk Highway
 - Collector Highway
 - Local Surface Road
 - Road Under Construction
 - Local Surface/Resource Access Road
 - Vehicle Track
 - Trail/Footpath
 - Railway Inactive
 - County Boundary
- Contour Interval = 10 m

