

Residual Bouguer Gravity Map for Northern Mainland Nova Scotia

M. S. King

Scale 1: 250 000

0 10 km

Halifax, Nova Scotia



© Her Majesty the Queen in Right of the Province of Nova Scotia 2005

Residual Bouguer Gravity

Bouguer gravity data, used to produce this map image, were extracted from Fisher (2005) and were provided by the Nova Scotia Department of Natural Resources, 1701 Hollis Street, Halifax, Nova Scotia B3J 2T9. Gravity points include national gravity net stations (5 km station spacing) and more detailed industry and government stations (235 m nominal station spacing). Given that gravity station spacing is variable throughout the NTS sheets there may be related artifacts present in the final gridded product. Regional-residual data separation was completed on the gridded product by subtracting a second grid consisting of a 1st- or 2nd-order polynomial surface calculated from the original Bouguer gravity total field grid. Residual Bouguer gravity data consist of wavelength signals (e.g. <5-10 km) that correspond to shallow geological sources. This 24-bit colour map image was derived from a 500 m grid product with an 8000 m extrapolation limit and has a 25 m pixel size. Shading was from the south at 35° above the horizon. For complete details please refer to Open File Report by King (2004).

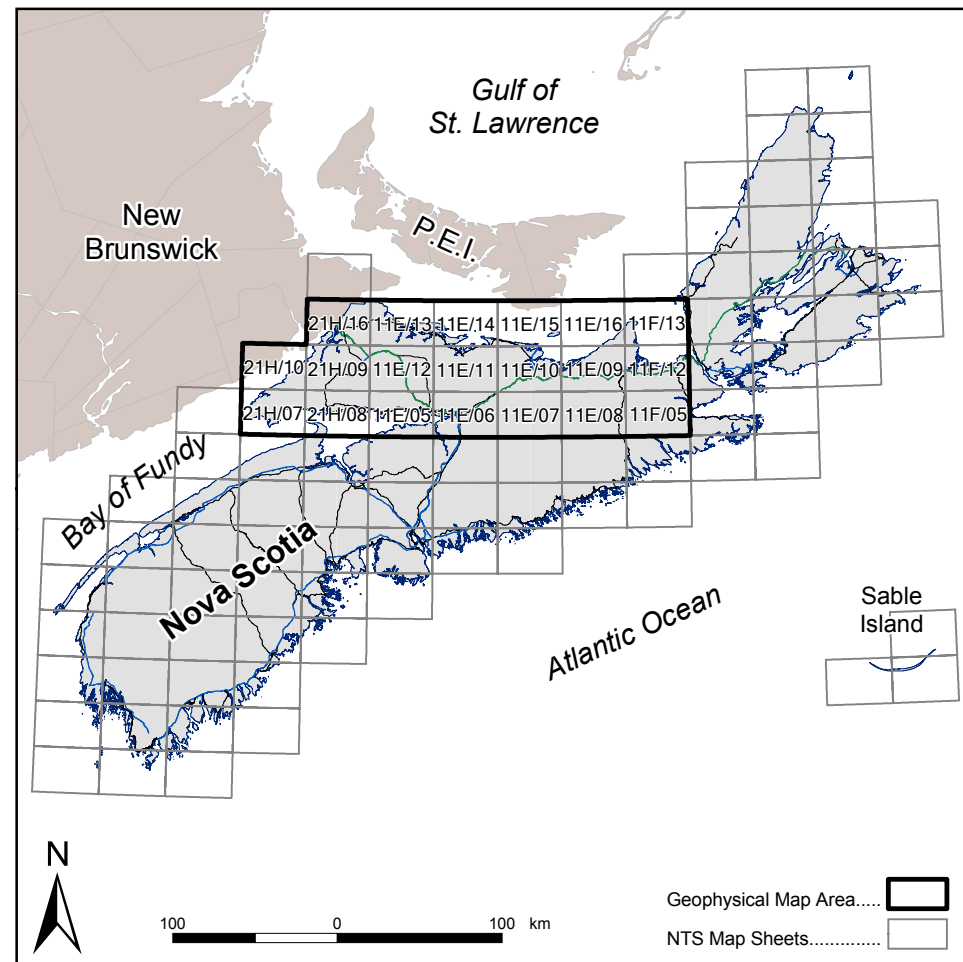
References

For more information on this map series, refer to:

Fisher, B. E. (compiler) 2005: Nova Scotia gravity database: Nova Scotia Department of Natural Resources, Mineral Resources Branch, Digital Product ME 154, version 1.

King, M. S. 2004: Report on potential field mapping component of the geological mapping of the St. Marys Basin Project, northern mainland Nova Scotia, Phase 2 of the Targeted Geoscience Initiative: Nova Scotia Department of Natural Resources, Mineral Resources Branch, Open File Report ME 2004-4.

Regional Key Map



Map Notes

Universal Transverse Mercator Projection (UTM), Zone 20, Central Meridian 63°00' West.

North American Datum (NAD) 1927.

Base and digital data derived from the Nova Scotia Topographic Database (NSTDB). The NSTDB is available from Service Nova Scotia and Municipal Relations (SNSMR), Land Information Services Division (LIS), Nova Scotia Geomatics Centre (NSGC), Amherst, Nova Scotia.

Funded by Natural Resources Canada and Nova Scotia Department of Natural Resources under the Targeted Geoscience Initiative (Phase 2) Project: Geological Mapping and Resource Evaluation in Central Nova Scotia, 2004-2005.

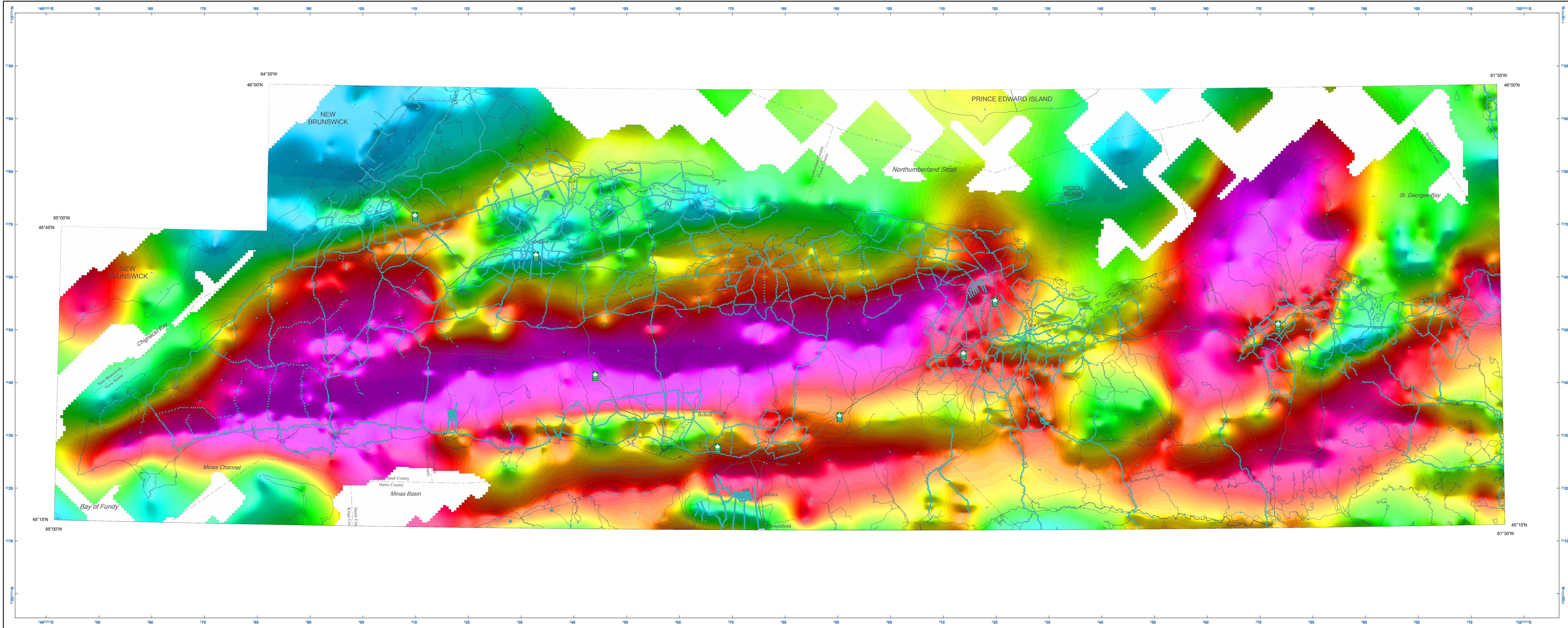
Cartography and reproduction by Nova Scotia Department of Natural Resources, Geoscience Information Services Section, 2004-2005.

Disclaimer

The information on this map may have come from a variety of government and nongovernment sources. The Nova Scotia Department of Natural Resources does not assume any liability for errors that may occur.

Recommended Citation

King, M.S. 2005: Residual Bouguer gravity map for northern mainland Nova Scotia, Nova Scotia Department of Natural Resources, Mineral Resources Branch, Open File Map ME 2005-91, scale 1:250 000.



Legend

- Gravity Stations
- 100 Series Highway
- Trans-Canada Highway
- Trunk Highway
- Collector Highway
- Hard Road Surface
- Lakes, Rivers, Coastline
- County Boundary

14
12
10
9
8
7
6.5
6
5.5
5
4.5
4
3.75
3.5
3.25
3
2.5
2
1.5
1
0.5
0
-0.5
-1
-1.5
-2
-2.5
-3
-3.5
-4
-4.5
-5
-5.5
-6
-6.5
-7
-7.5
-8
-8.5
-9
-10
-11
-12
-14
-16

Residual Bouguer Gravity (mGal)