

Airborne Total Field VLF-EM (Line Component) Map for part of NTS 11E/07, Hopewell Area, Nova Scotia

M. S. King

Scale 1:50 000

Halifax, Nova Scotia



© Her Majesty the Queen in Right of the Province of Nova Scotia 2005

VLF-EM Data Total Field (Line Component)

Airborne geophysical data, used to produce this map, were supplied by the Geological Survey of Canada (GSC) - Geophysical Data Centre, 615 Booth St., Ottawa, Ontario K1A 0E9. These high-resolution VLF-EM data were digitally acquired as part of the Muskegooboo Survey (GSC Project #184). The data, used to produce this map image, are the decompressed measured total field response using the 'Line' transmitter for GSC Project #184 is Annapolis, Maryland. Total field VLF-EM data provide a measure of the internal electrical character (i.e. resistivity/conductivity) of the underlying Quaternary and bedrock geology. VLF-EM data are not processed to the same levels as the associated magnetic data channel and are also subject to different artifacts and biases. For a more complete description please refer to King (2003, 2004). This 24-bit colour map image was produced with a 25 m pixel size. Shading is from the south at 35° above the horizon.

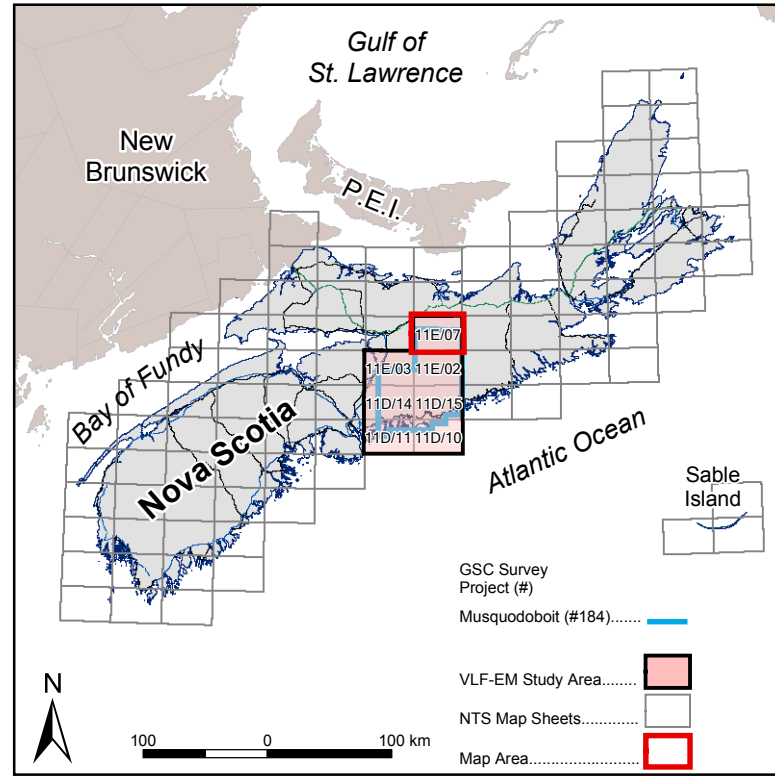
References

For more information on this map series, refer to:

King, M. S.: 2003, Report on high-resolution airborne VLF-EM processing and enhancement, Targeted Geoscience Initiative, Cape Breton, Inverness, Richmond and Victoria counties (NTS 11F14, 11K02 and 11K03), south-central Cape Breton Island, Nova Scotia: Nova Scotia Department of Natural Resources, Mineral Resources Branch, Open File Report ME 2003-4.

King, M. S.: 2004, Report on potential field mapping component of the geological mapping of the St. Marys Basin Project, northern mainland Nova Scotia, Phase 2 of the Targeted Geoscience Initiative: Nova Scotia Department of Natural Resources, Mineral Resources Branch, Open File Report ME 2004-4.

Regional Key Map



Map Notes

Universal Transverse Mercator Projection (UTM), Zone 20, Central Meridian 63°00' West, North American Datum (NAD) 1927.

Base and digital data derived from the Nova Scotia Topographic Database (NSTDB). The NSTDB is available from Service Nova Scotia and Municipal Relations (SNSMR), Land Information Services Division (LIS), Nova Scotia Geomatics Centre (NSGC), Amherst, Nova Scotia.

Cartography and reproduction by Nova Scotia Department of Natural Resources, Geoscience Information Services Section, 2004-2005.

Disclaimer

The information on this map may have come from a variety of government and non-government sources. The Nova Scotia Department of Natural Resources does not assume any liability for errors that may occur.

Recommended Citation

King, M.S.: 2005, Airborne total field VLF-EM (Line component) map for part of NTS 11E/07, Hopewell area, Nova Scotia: Nova Scotia Department of Natural Resources, Mineral Resources Branch, Open File Map ME 2005-108, scale 1:50 000.

