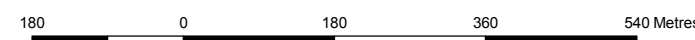


Historical Gold Mining, Fifteen Mile Stream Area, Part of NTS Sheets 11E/02 and 11E/01, Halifax and Guysborough Counties, Nova Scotia

P.K. Smith and T.A. Goodwin

Scale 1:9000



Halifax, Nova Scotia
2009



Crown Copyright © 2009, Province of Nova Scotia, all rights reserved.

Map Notes

Universal Transverse Mercator Projection (UTM), Zone 20, Central Meridian 63°00' West.

North American Datum (NAD) 1983 Canadian Spatial Reference System (CSRS) 98.

Base and digital data derived from the Nova Scotia Topographic Database (NSTDB). Copyright Her Majesty the Queen in Right of the Province of Nova Scotia. The NSTDB is available from Service Nova Scotia and Municipal Relations (SNSMR), Land Information Services Division (LIS), Nova Scotia Geomatics Centre (NSGC), Amherst, Nova Scotia.

Property boundaries derived from the Nova Scotia Property Records Database, maintained by Service Nova Scotia and Municipal Relations. Updated March 1, 2009.

Crown Land Property Database (CLPD) provided by Nova Scotia Department of Natural Resources, Land Services Branch, Surveys Division. Updated March 5, 2009.

Colour aerial photography flown by the Nova Scotia Department of Natural Resources, 1996-2006.

Refer to Bates (1987, p. 33-35) for historical information and numbering of the gold districts.

Cartography and reproduction by Nova Scotia Department of Natural Resources, Geoscience Information Services Section, 2009.

Disclaimer

The information on this map has come from a variety of government and nongovernment sources. The Nova Scotia Department of Natural Resources does not assume any liability for errors that may occur. This map is intended for use at the published scale of 1:9000.

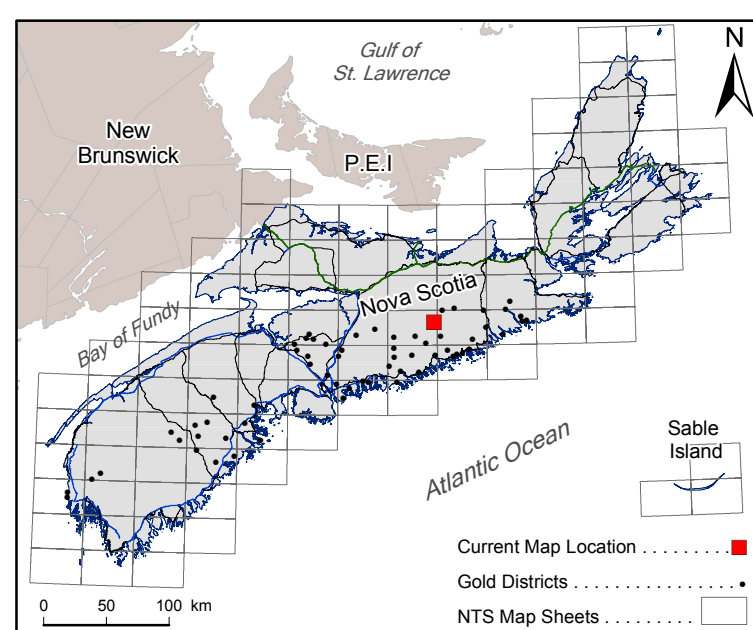
The location and the areal extent of the tailings have not been field checked. Additional tailings may exist. Natural dispersal of tailings has not been determined. The location of shafts and associated mine buildings have also not been field checked.

Please note, some maps in this series do not indicate the presence of former mine tailings. In these instances either, (1) there is no historical information regarding the presence or location of the tailings, or (2) the historical information is too vague to depict the approximate outline of the former mine tailings.

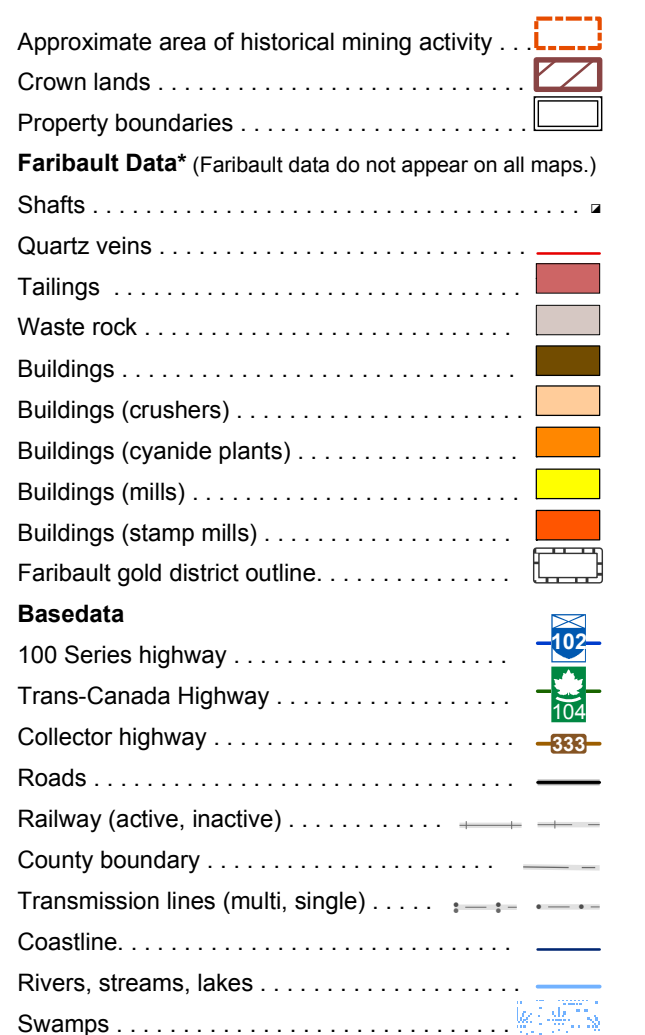
Safety Advisory

A number of safety issues are associated with former gold mining districts. Physical hazards such as open pits and open shafts may exist. Never enter any open holes or shafts. Falling rock debris may occur along high wall rock faces. Tailings may contain high concentrations of arsenic and mercury. Keep off any tailings containment areas.

Index Map



Legend



* Historical mining information digitized from detailed mapping by E.R. Faribault of the Geological Survey of Canada from the late 1800s to the early 1900s. Not all gold districts were mapped. Please contact the Nova Scotia Department of Natural Resources library for a list of the districts that have been mapped. The accuracy of the historical information (as shown on this map) cannot be guaranteed. This map should not be used for legal purposes.

References

Bates, J. L. E. 1987: Gold in Nova Scotia; Nova Scotia Department of Mines and Energy, Information Series No. 13, 48 p.
Faribault, E. R. 1899: Plan and section, Fifteen-Mile Stream Gold District, Halifax County, Nova Scotia; Geological Survey of Canada, Map 650, scale 1:6000.

Recommended Citation

Smith, P.K. and Goodwin, T.A. 2009: Historical gold mining, Fifteen Mile Stream area, part of NTS sheets 11E/02 and 11E/01, Halifax and Guysborough counties, Nova Scotia; Nova Scotia Department of Natural Resources, Mineral Resources Branch, Open File Map ME 2009-1 (sheet 39 of 64), scale 1:9000.

