

# Mineral Rights Disposition Map for the Province of Nova Scotia

B. E. Fisher and A. S. Wenning

Scale 1:500 000  
0 2.0 4.0  
Kilometers



Halifax, Nova Scotia  
2010  
Crown copyright 2010, Province of Nova Scotia. All rights reserved.

### Map Notes

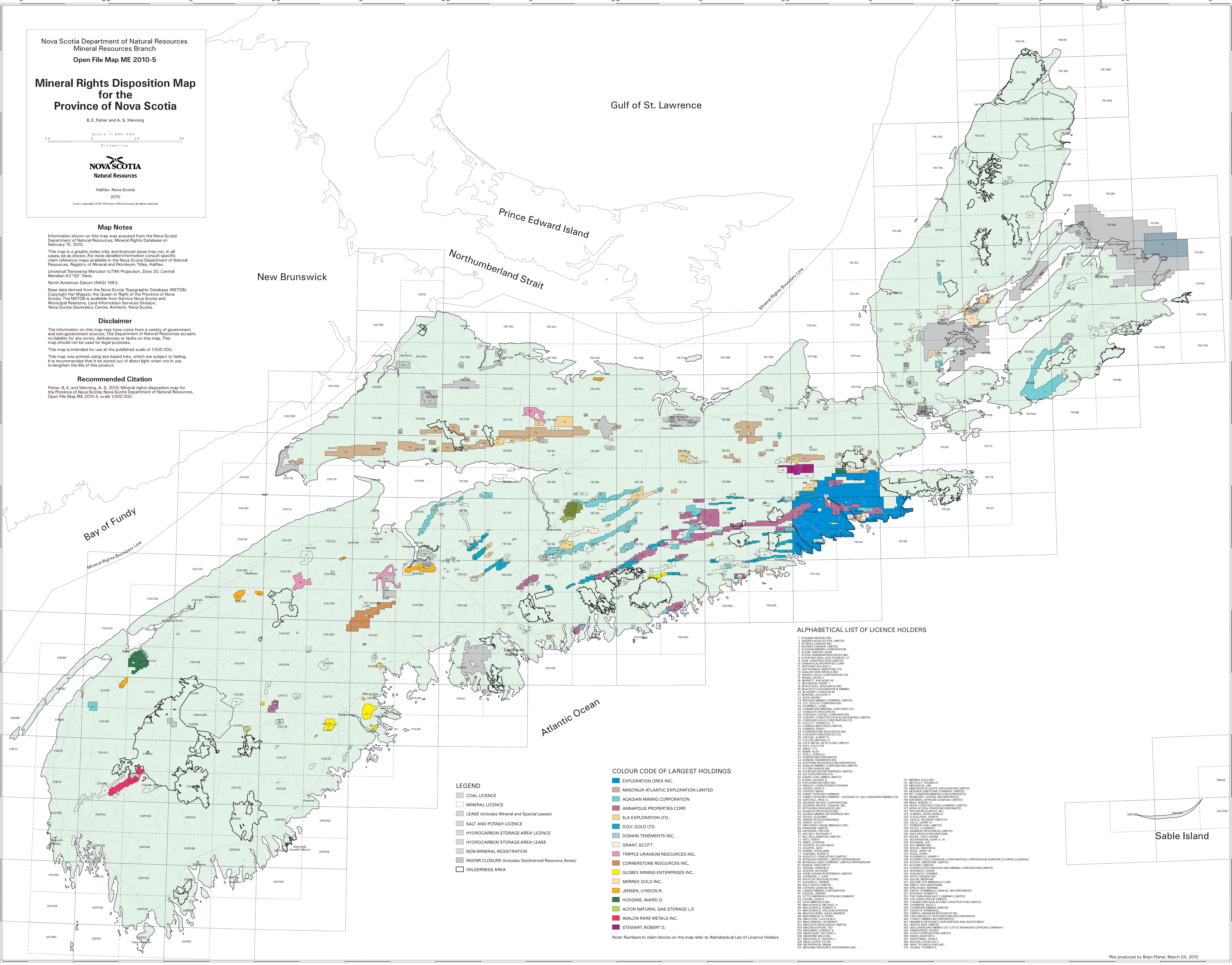
Information shown on this map was acquired from the Nova Scotia Department of Natural Resources, Mineral Rights Database on February 15, 2010.  
This map is a graphic index only, and licenced areas may not, in all cases, be as shown. For more detailed information consult specific claim reference maps available in the Nova Scotia Department of Natural Resources, Registry of Mineral and Petroleum Titles, Halifax.  
Universal Transverse Mercator (UTM) Projection, Zone 20, Central Meridian 63°00' West.  
North American Datum (NAD) 1983.  
Base data derived from the Nova Scotia Topographic Database (NSTDB). Copyright Her Majesty the Queen in Right of the Province of Nova Scotia. The NSTDB is available from Service Nova Scotia and Municipal Relations, Land Information Services Division, Nova Scotia Geomatics Centre, Amherst, Nova Scotia.

### Disclaimer

The information on this map may have come from a variety of government and non-government sources. The Department of Natural Resources accepts no liability for any errors, deficiencies or faults on this map. This map should not be used for legal purposes.  
This map is intended for use at the published scale of 1:500 000.  
This map was printed using dye-based inks, which are subject to fading. It is recommended that it be stored out of direct light when not in use to lengthen the life of this product.

### Recommended Citation

Fisher, B. E. and Wenning, A. S. 2010: Mineral rights disposition map for the Province of Nova Scotia. Nova Scotia Department of Natural Resources, Open File Map ME 2010-5, scale 1:500 000.



### ALPHABETICAL LIST OF LICENCE HOLDERS

- 1 213488B ONTARIO INC.
- 2 213488B ONTARIO INC. LIMITED
- 3 213488B ONTARIO INC. LIMITED
- 4 213488B ONTARIO INC. LIMITED
- 5 213488B ONTARIO INC. LIMITED
- 6 213488B ONTARIO INC. LIMITED
- 7 213488B ONTARIO INC. LIMITED
- 8 213488B ONTARIO INC. LIMITED
- 9 213488B ONTARIO INC. LIMITED
- 10 213488B ONTARIO INC. LIMITED
- 11 213488B ONTARIO INC. LIMITED
- 12 213488B ONTARIO INC. LIMITED
- 13 213488B ONTARIO INC. LIMITED
- 14 213488B ONTARIO INC. LIMITED
- 15 213488B ONTARIO INC. LIMITED
- 16 213488B ONTARIO INC. LIMITED
- 17 213488B ONTARIO INC. LIMITED
- 18 213488B ONTARIO INC. LIMITED
- 19 213488B ONTARIO INC. LIMITED
- 20 213488B ONTARIO INC. LIMITED
- 21 213488B ONTARIO INC. LIMITED
- 22 213488B ONTARIO INC. LIMITED
- 23 213488B ONTARIO INC. LIMITED
- 24 213488B ONTARIO INC. LIMITED
- 25 213488B ONTARIO INC. LIMITED
- 26 213488B ONTARIO INC. LIMITED
- 27 213488B ONTARIO INC. LIMITED
- 28 213488B ONTARIO INC. LIMITED
- 29 213488B ONTARIO INC. LIMITED
- 30 213488B ONTARIO INC. LIMITED
- 31 213488B ONTARIO INC. LIMITED
- 32 213488B ONTARIO INC. LIMITED
- 33 213488B ONTARIO INC. LIMITED
- 34 213488B ONTARIO INC. LIMITED
- 35 213488B ONTARIO INC. LIMITED
- 36 213488B ONTARIO INC. LIMITED
- 37 213488B ONTARIO INC. LIMITED
- 38 213488B ONTARIO INC. LIMITED
- 39 213488B ONTARIO INC. LIMITED
- 40 213488B ONTARIO INC. LIMITED
- 41 213488B ONTARIO INC. LIMITED
- 42 213488B ONTARIO INC. LIMITED
- 43 213488B ONTARIO INC. LIMITED
- 44 213488B ONTARIO INC. LIMITED
- 45 213488B ONTARIO INC. LIMITED
- 46 213488B ONTARIO INC. LIMITED
- 47 213488B ONTARIO INC. LIMITED
- 48 213488B ONTARIO INC. LIMITED
- 49 213488B ONTARIO INC. LIMITED
- 50 213488B ONTARIO INC. LIMITED
- 51 213488B ONTARIO INC. LIMITED
- 52 213488B ONTARIO INC. LIMITED
- 53 213488B ONTARIO INC. LIMITED
- 54 213488B ONTARIO INC. LIMITED
- 55 213488B ONTARIO INC. LIMITED
- 56 213488B ONTARIO INC. LIMITED
- 57 213488B ONTARIO INC. LIMITED
- 58 213488B ONTARIO INC. LIMITED
- 59 213488B ONTARIO INC. LIMITED
- 60 213488B ONTARIO INC. LIMITED
- 61 213488B ONTARIO INC. LIMITED
- 62 213488B ONTARIO INC. LIMITED
- 63 213488B ONTARIO INC. LIMITED
- 64 213488B ONTARIO INC. LIMITED
- 65 213488B ONTARIO INC. LIMITED
- 66 213488B ONTARIO INC. LIMITED
- 67 213488B ONTARIO INC. LIMITED
- 68 213488B ONTARIO INC. LIMITED
- 69 213488B ONTARIO INC. LIMITED
- 70 213488B ONTARIO INC. LIMITED
- 71 213488B ONTARIO INC. LIMITED
- 72 213488B ONTARIO INC. LIMITED
- 73 213488B ONTARIO INC. LIMITED
- 74 213488B ONTARIO INC. LIMITED
- 75 213488B ONTARIO INC. LIMITED
- 76 213488B ONTARIO INC. LIMITED
- 77 213488B ONTARIO INC. LIMITED
- 78 213488B ONTARIO INC. LIMITED
- 79 213488B ONTARIO INC. LIMITED
- 80 213488B ONTARIO INC. LIMITED
- 81 213488B ONTARIO INC. LIMITED
- 82 213488B ONTARIO INC. LIMITED
- 83 213488B ONTARIO INC. LIMITED
- 84 213488B ONTARIO INC. LIMITED
- 85 213488B ONTARIO INC. LIMITED
- 86 213488B ONTARIO INC. LIMITED
- 87 213488B ONTARIO INC. LIMITED
- 88 213488B ONTARIO INC. LIMITED
- 89 213488B ONTARIO INC. LIMITED
- 90 213488B ONTARIO INC. LIMITED
- 91 213488B ONTARIO INC. LIMITED
- 92 213488B ONTARIO INC. LIMITED
- 93 213488B ONTARIO INC. LIMITED
- 94 213488B ONTARIO INC. LIMITED
- 95 213488B ONTARIO INC. LIMITED
- 96 213488B ONTARIO INC. LIMITED
- 97 213488B ONTARIO INC. LIMITED
- 98 213488B ONTARIO INC. LIMITED
- 99 213488B ONTARIO INC. LIMITED
- 100 213488B ONTARIO INC. LIMITED

### LEGEND

- COAL LICENCE
- MINERAL LICENCE
- LEASE (includes Mineral and Special Leases)
- SALT AND POTASH LICENCE
- HYDROCARBON STORAGE-AREA LICENCE
- HYDROCARBON STORAGE-AREA LEASE
- NON-MINERAL REGISTRATION
- NSDNR CLOSURE (includes Geothermal Resource Areas)
- WILDERNESS AREA

### COLOUR CODE OF LARGEST HOLDINGS

- EXPLORATION OREX INC.
- MINOTAU ATLANTIC EXPLORATION LIMITED
- ACADIAN MINING CORPORATION
- ANNAPOLIS PROPERTIES CORP.
- ELK EXPLORATION LTD.
- D.D.V. GOLD LTD.
- DONKIN TENEMENTS INC.
- GRANT, SCOTT
- TRIPPLE URANIUM RESOURCES INC.
- CORNERSTONE RESOURCES INC.
- GLOBEX MINING ENTERPRISES INC.
- MERREX GOLD INC.
- JENSEN, LYNDON R.
- HUDDIGS, AVARD D.
- ALTON NATURAL GAS STORAGE L.P.
- AVALON RARE METALS INC.
- STEWART, ROBERT D.

Note: Numbers in claim blocks on the map refer to Alphabetical List of Licence Holders

