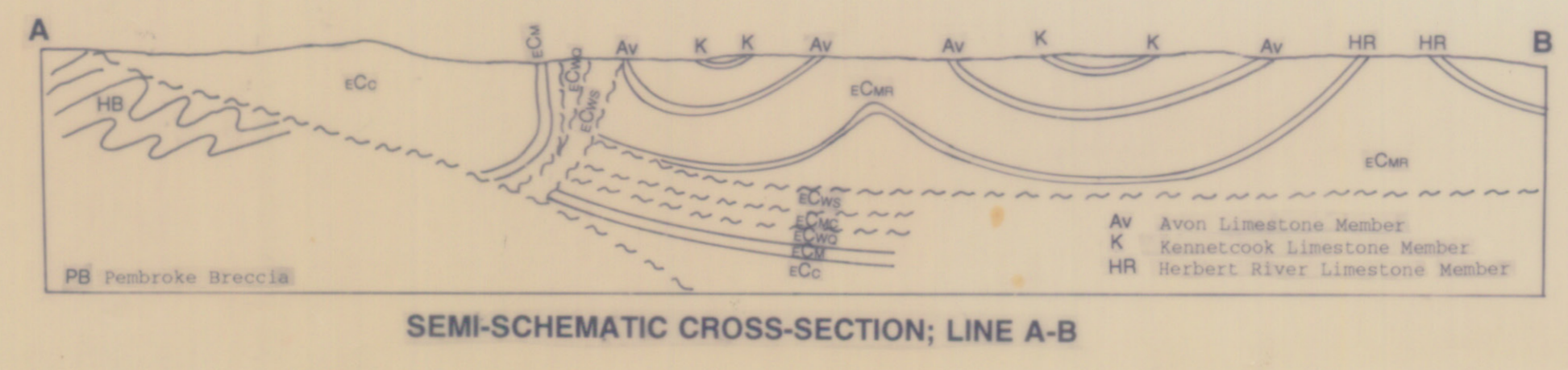


# WALTON - RAINY COVE BROOK QUADRANGLE 21 H/01, Z2 & Z4

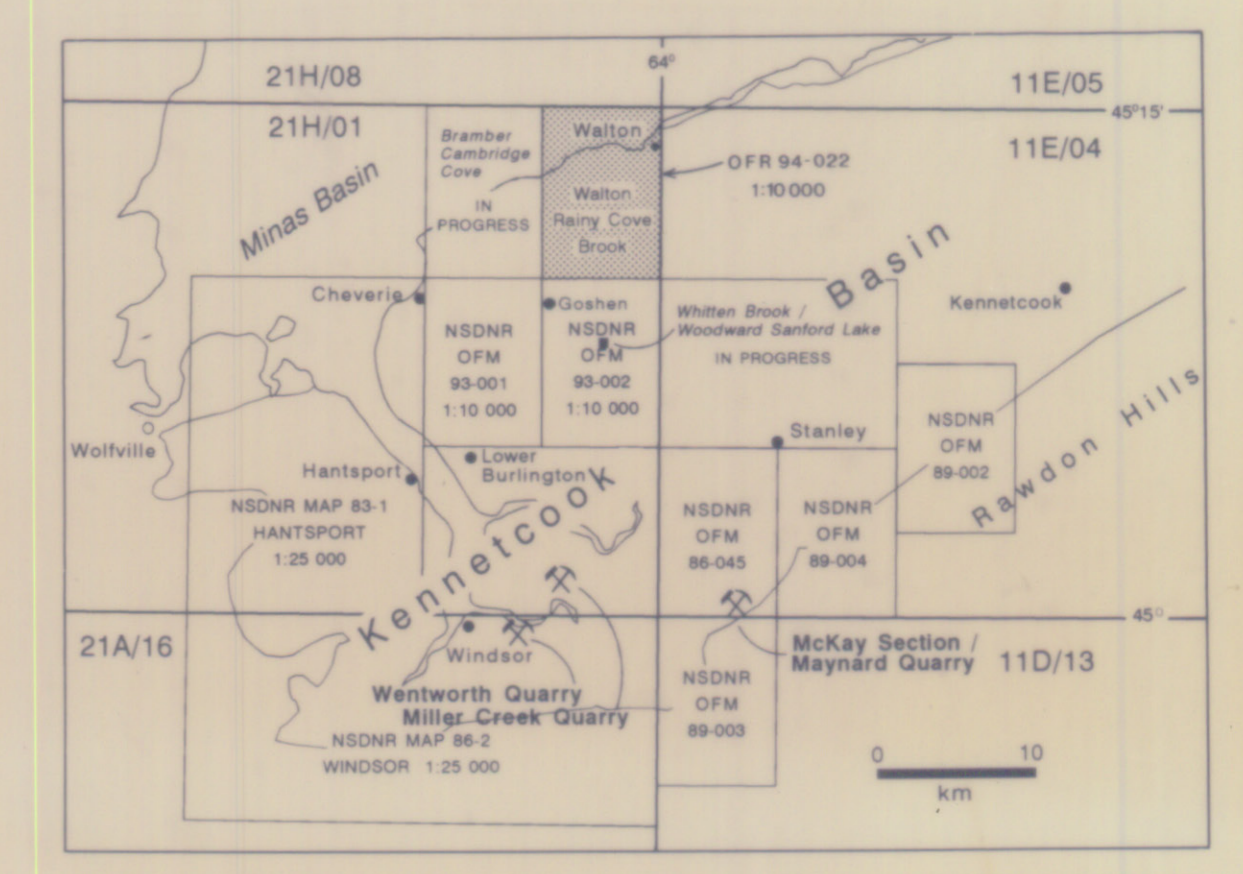
Geology by R.G. Moore 1993  
 Triassic mapping and redrafting by C.F. Cormier  
 and redrafting by A.D. McKnight



- ### LEGEND
- MESOZOIC**
    - TRASSIC-JURASSIC**
      - FUNDY GROUP**
        - WOLVILLE FORMATION (TJs):** red arkosic sandstone, minor cross-bedded pebble conglomerate, partly calcite cemented.
    - PALEOZOIC**
      - LATE CARBONIFEROUS**
        - ICTOU GROUP**
          - SCOTCH VILLAGE FORMATION (ECV):** grey-green sandstone
          - Upper member (ECV1): grey-green sandstone
          - Lower member (ECV2): drab, reddish-brown siltstone sandstone
      - EARLY CARBONIFEROUS**
        - CANSO GROUP**
          - WATERING BROOK FORMATION (ECW):** grey siltstone, minor sandstone with intercalated gypsum and anhydrite
      - WINDSOR GROUP**
        - MURPHY ROAD FORMATION (ECM):** siltstone, minor gypsum and the following sequence of limestones:
          - Kenetcook K
          - Wallace Point WP
          - Mound River MR
          - Avon Av
          - Brooklyn Station BS
          - Herbert River HR
        - PESQUID LAKE FORMATION (ECL):** siltstone and the following sequence of limestones:
          - Libreau L
          - Pesquid P
          - Pesquid Pq

- ### SYMBOLS
- Highway or primary road
  - Other roads or trails
  - Lake or pond
  - Stream
  - Indefinite stream
  - Marsh or bog
  - Area of outcrop, small outcrop
  - siltstone, sandstone, feldspathic sandstone
  - limestone, shale, gypsum
  - mudstone (variable amounts of siltstone and dolomite)
  - limestone, shale, gypsum
  - Bedding (horizontal, inclined, vertical, overturned)
  - Joint (defined, approximate)
  - Fault (defined, approximate)
  - Anticline, syncline
  - Karst topography, sink
  - Mine or quarry (abandoned)
  - Drill hole

- ### Element and Mineral Symbols
- Barium Ba
  - Copper Cu
  - Gypsum Gyp
  - Iron Fe
  - Lead Pb
  - Zinc Zn
  - Manganese Mn
  - Silver Ag



Nova Scotia Department of Natural Resources  
 Mines and Energy Branches  
 OFR 94-022  
 Geological map of  
**WALTON - RAINY COVE BROOK QUADRANGLE**  
 (N.T.S. SHEET 21H/01)  
 NOVA SCOTIA  
 R.G. Moore and C.F. Cormier  
 Scale 1:10,000  
 Nova Scotia Department of Natural Resources  
 Honourable Donald R. Downe, Minister  
 Halifax, Nova Scotia  
 1994