

**AREA:** Shubenacadie, NS  
**LINE 1:** Densmore Road  
 SP # EAST SP 15M  
**REVERSE POLARITY**  
**MIGRATION STACK**

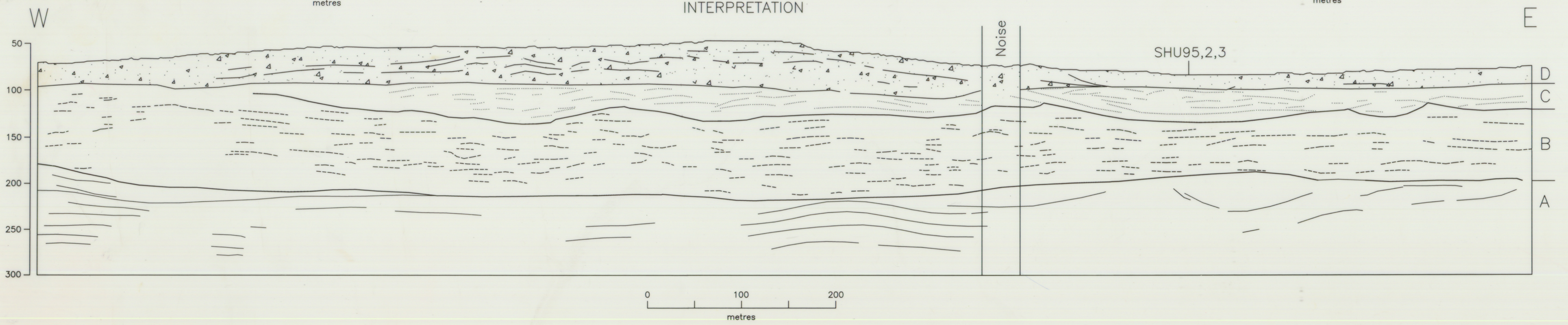
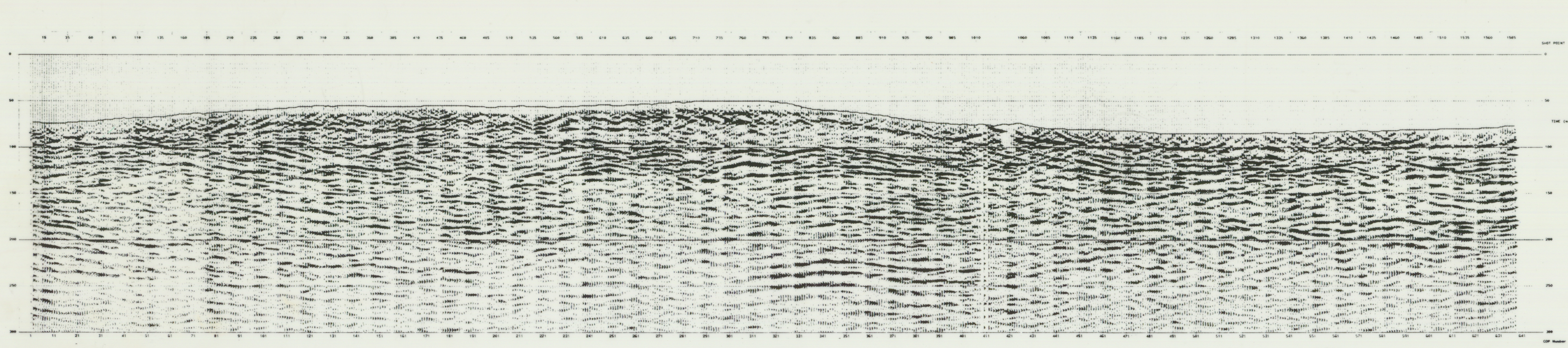
**FIELD PARAMETERS**

Date shot:	Dec 1994
Instrument:	SR71 - OUT, WATCH OUT
Filter:	24 Hz, 5 - 120 Hz
Source:	12 lb. 2000
Shot:	30 m.
Geophones:	Single geophone
Spacing:	5 m.

**PROCESSING PARAMETERS**

Date:	Dec 1994
Trace Edit:	Amplitude (mV)
Phase Compensation:	Geophone response only
Surface Equalization:	Surface correction, mean amplitude
Geophone Equalization:	Geophone surface constant
Trace Sorter:	First break region
Structure Section:	None
Residual Section:	None
Velocity Analysis:	None
Stack:	200 - 2000, 1440, 85 ms.
Cap. Trace Station:	12
File:	12 (12)
Trace Equalization:	None
Migration:	None

SEALE: Horizontal 20 m/trace, Vertical 20 m/inch



**SEISMIC STRATIGRAPHIC INTERPRETATION**

SEISMIC SEQUENCE	INTERPRETATION
△	D Quaternary drift; till sheets separated by gravelly sand lenses
⋯	C Quaternary drift; glaciolacustrine and glaciofluvial silt and gravelly sand
---	B Early Cretaceous sediments; silica sand, clay, lignite
—	A Carboniferous bedrock; limestone, breccia