

AREA: Shubenacadie, NS
 LINE 3: Through pasture
 SP 785 EAST SP 8
 REVERSE POLARITY

MIGRATION STACK

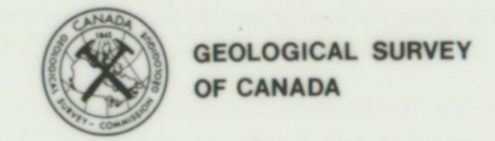
FIELD PARAMETERS

Date shot: Oct. 1994
 Instruments: OYO DAS-1
 Filter: 3(72) - OUT, NOTCH OUT
 Spread: 24 trace, 5 - 12m
 Source: 12 gauge
 Spacing: 5 m
 Geophones: 50 Hz, Single geophone
 Array: Single
 Spacing: 5 m

PROCESSING PARAMETERS

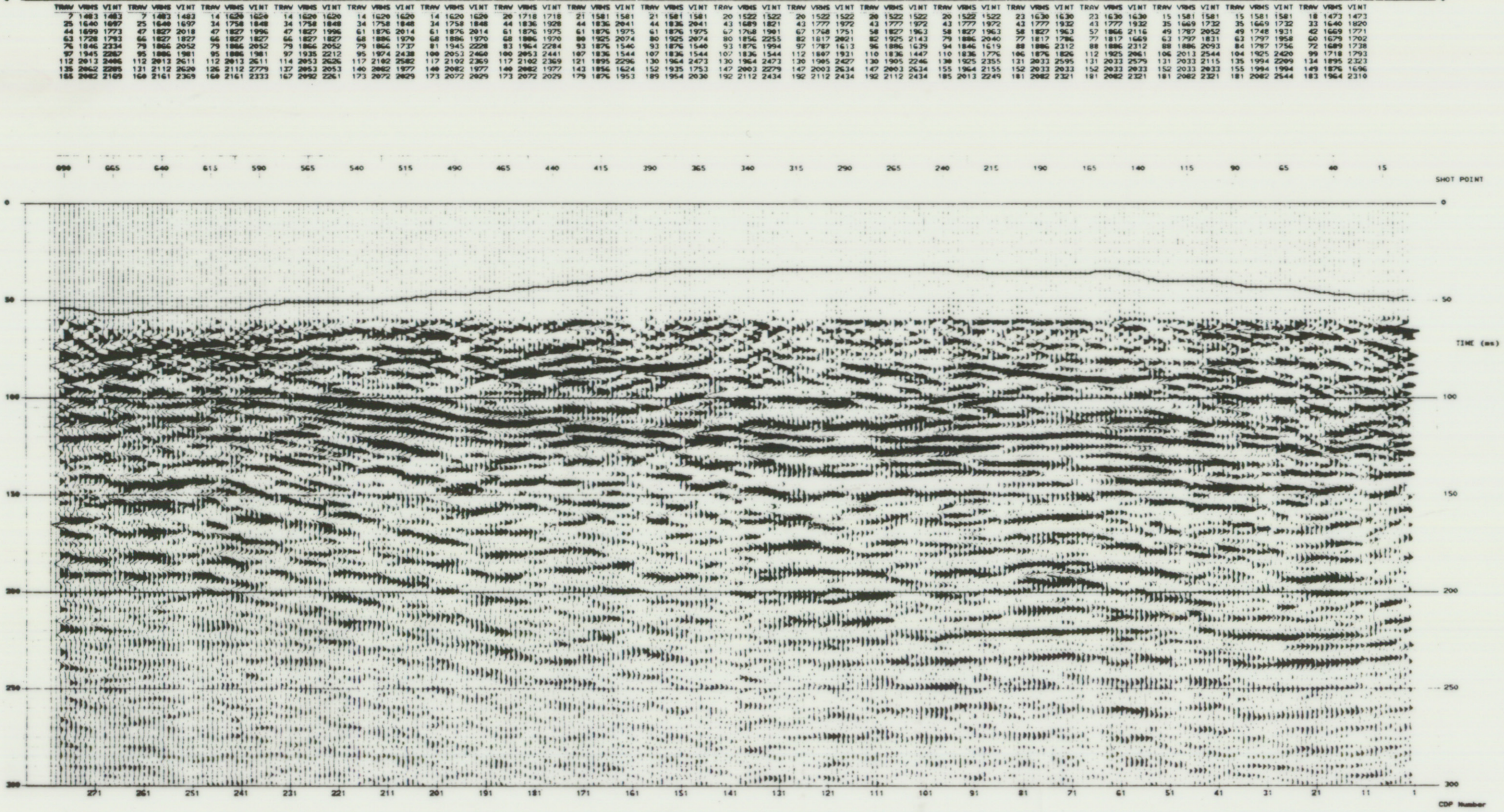
Date: Dec 1994
 Trace Edit: Geophone(Bst)
 Exponential Scaling: Geophone response only
 Phase Compensation: Surface consistent mean amplitude
 Trace Equalization: 5 component surface consistent
 Deconvolution: First break region
 Equalization Scaling: First break region
 Trace Gather: Datum 0 m., W 1500 A/S
 Structure Statics: Shot - Station, hand picked
 Residual Statics: Semblance
 Velocity analysis: 32m, 22ms., 14m., 85 ms.
 Mute: +/- 2.0 ms.
 Cdp Trim Statics: 12 fold
 Stack: 60/90 - 200/200 Hz.
 Filter: Mean amplitude scale 10 - 200 ms.
 Trace Equalization: Kirchhoff summation
 Migration

SCALE: Horizontal 21 Traces/in Vertical 20 in/second

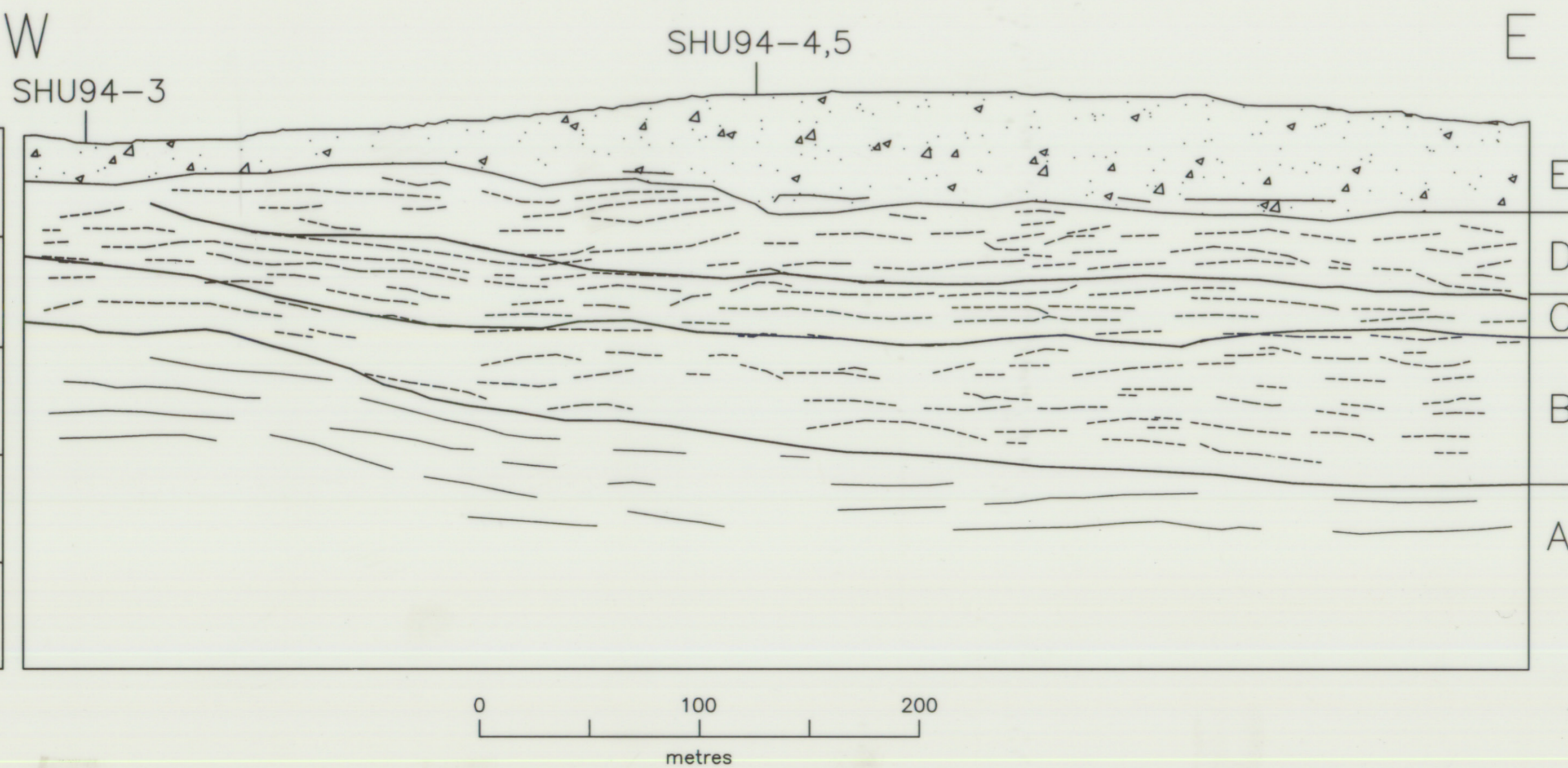


Nova Scotia Department of Natural Resources

Canada-Nova Scotia Mineral Development Agreement



INTERPRETATION



SEISMIC STRATIGRAPHIC INTERPRETATION

- | SEISMIC SEQUENCE | INTERPRETATION |
|------------------|--|
| E | Quaternary drift; till sheets |
| D | Early Cretaceous sediments; silica sand, minor clay, lignite |
| C | Early Cretaceous sediments; lignite, kaolinic clay |
| B | Early Cretaceous sediments; silica sand, kaolinic clay |
| A | Carboniferous bedrock; limestone, breccia |