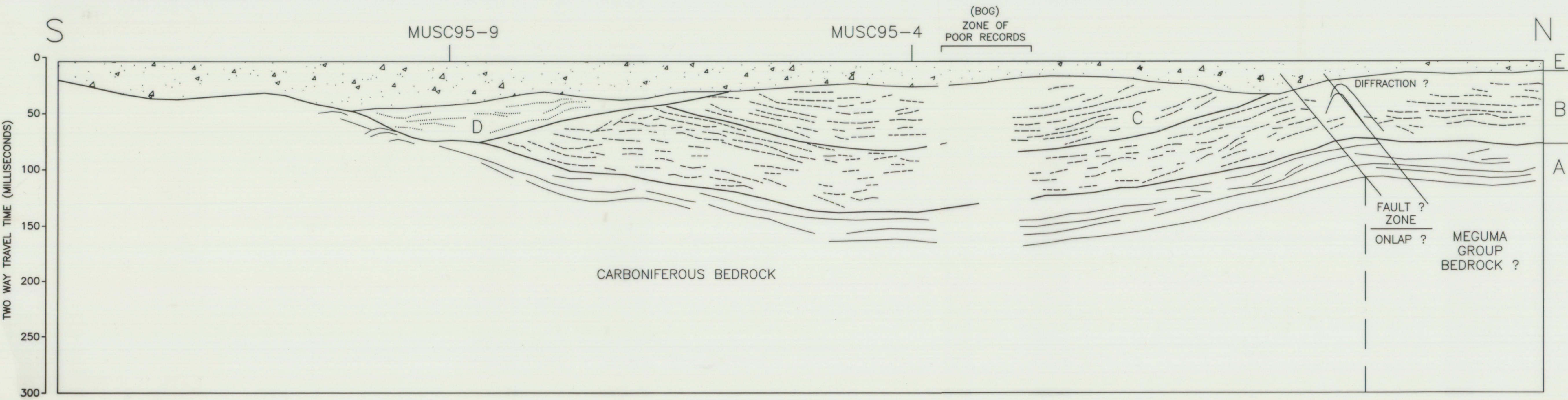

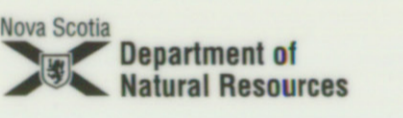

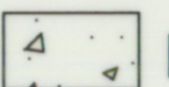
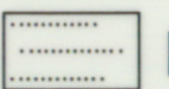
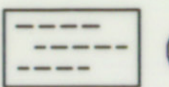
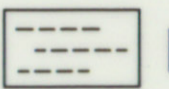
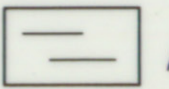


INTERPRETATION




 GEOLOGICAL SURVEY OF CANADA

 Nova Scotia Department of Natural Resources

 Canada-Nova Scotia Mineral Development Agreement

SEISMIC STRATIGRAPHIC INTERPRETATION

SEISMIC SEQUENCE	INTERPRETATION
 E	Quaternary drift; till sheets
 D	Quaternary drift; glaciolacustrine clay
 C	Early Cretaceous sediments; silica sand, kaolin clay
 B	Early Cretaceous sediments; silica sand, kaolin clay
 A	Bedrock; Carboniferous limestone and Cambro-Ordovician metawacke