

NOVA SCOTIA IOCG PROJECT

A. P. Belperio
Minotaur Exploration Ltd

March 2010

SUMMARY

A large number of Iron Oxide Copper Gold (IOCG) targets have been generated through systematic regional surveys and field investigations along the 250 km long Cobequid-Chedabucto Suture of central Nova Scotia.

Twelve targets have been selected for initial drill testing across the province.

The targets are defined by strong gravity+/- magnetic anomalies, situated along structural plumbing and in dilational settings proximal to oxidized, iron-altered igneous intrusives, and record an association with local iron alteration or geochemical anomalism.

The project is currently held 80% by Minotaur Exploration Ltd, through its subsidiary Minotaur Atlantic Exploration Ltd, and 20% by Dundee Precious Metals Ltd. Dundee have advised they wish to cease funding and an opportunity is therefore available for a third party to farm-in to the project and undertake a comprehensive program of drill testing of targets. A successful discovery will ensure a pre-emptive position in this developing IOCG province.

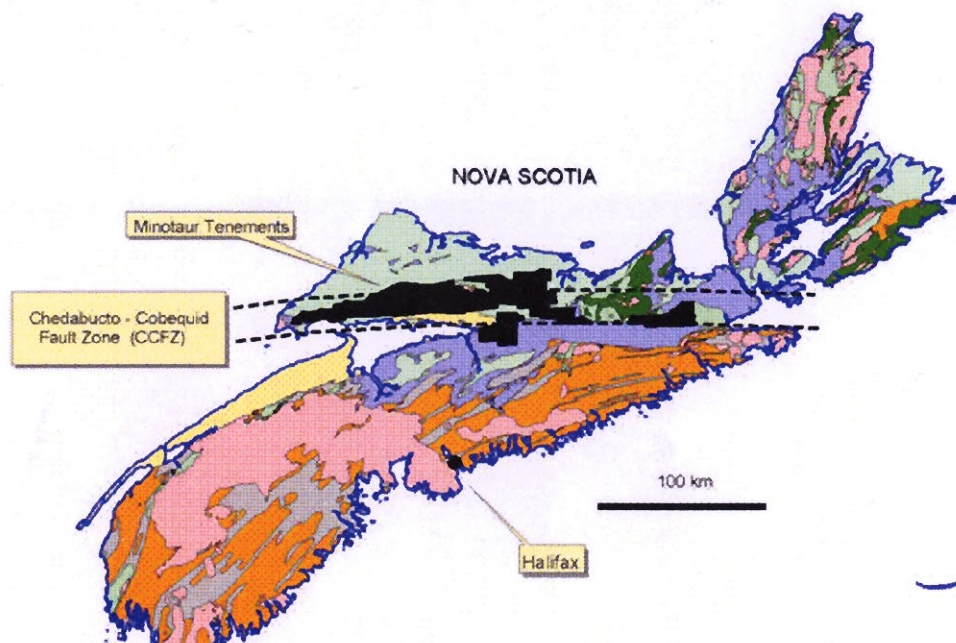


Figure 1. Initial Exploration Licence areas (black), central Nova Scotia, including a number of prospector claims subject to option.

BACKGROUND

The Cobequid–Chedabucto Fault Zone comprises a series of crustal-scale faults along a length of ~250 km and up to 25 km wide that bisects central Nova Scotia into two different terranes (Avalon and Meguma Terranes). The fault zone is host to >100 mineral occurrences and small deposits of Fe-oxide ±Cu ±Co ±Au ±Ni ±Ba and consisting of ankerite and siderite with significant amounts of magnetite, specular haematite, pyrite, chalcopyrite and barite. Mineral occurrences range from single veins to breccia systems and are associated with widespread carbonate alteration (ankerite, siderite, calcite) along with silica and sericite alteration. Better known mineralised occurrences are at Londonderry, Copper Lake, Bridgeville, Mt Thom and Bass River (Figure 2). It is only in very recent years that these Fe-oxide deposits have been recognised as representing part of an IOCG-style system (O'Reilly, 2004; Kontak, 2006; Corriveau, 2007).

Mineralisation appears related to oxidised A-type granitic intrusions and numerous small gabbroic–dioritic intrusions associated with Devonian–Carboniferous mafic underplating along with brittle tectonism along the Cobequid–Chedabucto Fault Zone. The region is characterised by thick forests, extensive veneers of glacial till and limited exposure. The historic gravity coverage is poor and has been little used in previous exploration, so that the true potential for IOCG-style mineralisation within the Cobequid–Chedabucto Fault Zone has not been adequately assessed.

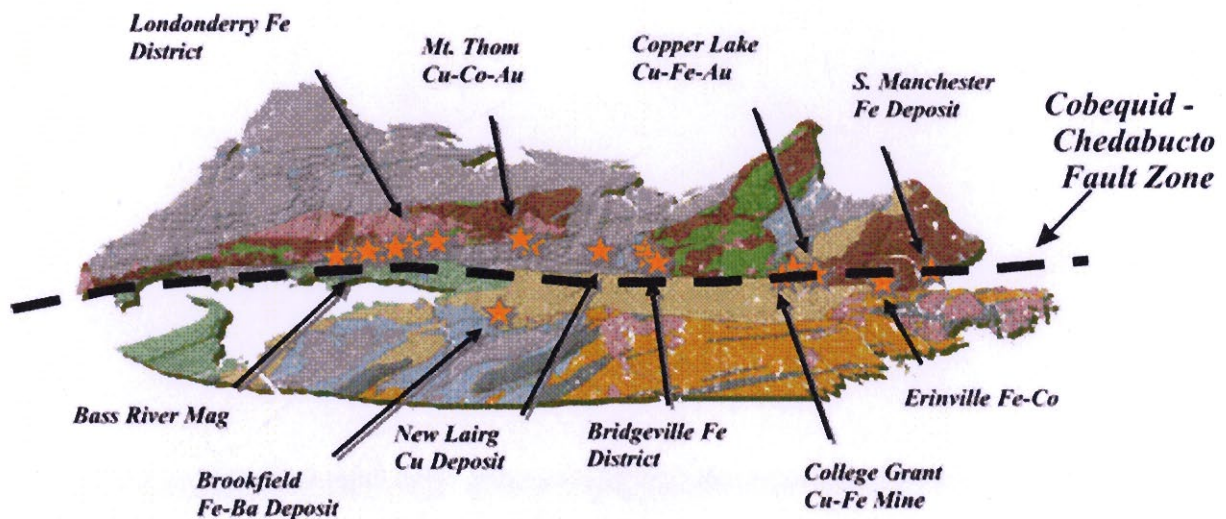


Figure 2: Major IOCG-type mineral occurrences in central Nova Scotia

Upon initiating the project in July 2007, Minotaur secured the majority of the belt through large-scale ground pegging and option agreements with prospectors. The objective of securing the district was to allow large-scale regional gravity surveys to be undertaken unhindered. Subsequently, by integrating the new gravity data with other available geological, geophysical and geochemical data sets, the tenements have been able to be reduced to the area with greatest potential. Targets have now been defined and prioritized for drill testing.

Dundee Precious Metals farmed in to the project in August 2007. To date, Dundee has spent C\$2 million on the project, covering the regional and infill gravity surveying, data processing, integration and target generation and the drill testing of one target. Dundee have advised they wish to exit the project with their 20% earned equity.

MINOTAUR ACTIVITIES SINCE 2007

Regional gravity data collection and selected follow-up of defined areas was undertaken progressively from September 2007 to December 2008 utilizing Nova Scotia contractors Eastern Geophysics. Contractor supervision, quality control, data collation, reduction, merging and processing were undertaken by Minotaur geophysicists Andrew Thompson and John Hart. Prospector options, tenement administration, landowner and land access issues were undertaken by Nova Scotia contract geologist John O'Sullivan. Field investigations were undertaken by Nova Scotia contract geologist Gregg Morris. Minotaur's exploration director Antonio Belperio supervised all aspects of the project and undertook target selection and prioritization.

Target Selection and Prioritization

Following completion of regional and follow-up gravity data collection, data reduction, merging and processing in December 2008, systematic selection and prioritization of potential IOCG targets was undertaken utilizing integrated gravity, magnetic, geological, geochemical and field observation data. An IOCG body in excess of 100 million tons is expected to have a discrete residual gravity signature because of the intimate association with iron alteration. A magnetic anomaly may or may not be present depending on the form of iron (haematite, magnetite, pyrrhotite, siderite, ankerite). That gravity signature, however, will be difficult to discern amongst a sea of other gravity anomalies caused by a variety of other factors - denser mafic intrusives, denser lithological units and palaeo-topographic features masked beneath cover. *

The target areas are covered with thin glacial till, with sporadic isolated outcrops providing a limited glimpse of rock types, alteration styles and potential mineralization. Initial screening was aimed at eliminating anomalies that can be explained from outcrop geology, such as denser mafic intrusives, stratiform bodies or topographic features. Geological mapping by Murphy et al. (1983), Donohue and Wallace (1983) and Pe-Piper and Piper (2005) as well as independent field checking were utilized. Of a total of 78 potential targets initially identified, 46 were eliminated and 32 were selected for further ground investigation and more detailed gravity infill.

The 32 unexplained anomalies were then examined in further detail focusing on geology, geophysics and geotectonic settings, and any evidence of alteration and geochemical anomalism. Alteration styles noted include pervasive iron alteration as well as discrete breccias bodies composed of either magnetite, haematite or siderite. The entire district is regionally anomalous in copper, gold and cobalt, and mineralization was noted with breccias at Copper Lake, Mt Thom, East Mines, Londonderry and Bass River (**Figure 3**).

A scoring and ranking system used the following key positive associations:

- Size/shape/model of gravity anomaly
- Proximity to Devonian-Carboniferous igneous intrusives
- Connecting structural plumbing
- Dilational setting
- Local association of magnetic anomalism
- Presence of hydrothermal iron alteration
- Local rock, soil or stream geochemical anomalism
- Historic Fe-Cu workings in the vicinity

Of the 32 sites investigated in detail, 18 were subsequently classified as Very High and High Priority targets (**Figure 4 and Table 1**). A large number of these are spatially associated with major structures tapping oxidized and haematite-altered Devonian-Carboniferous plutons.

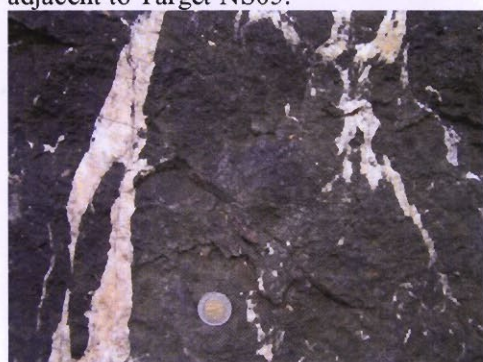
Figure 3. Iron alteration and mineralisation styles:



(A) Haematite veined and altered granite adjacent to Target NS05.



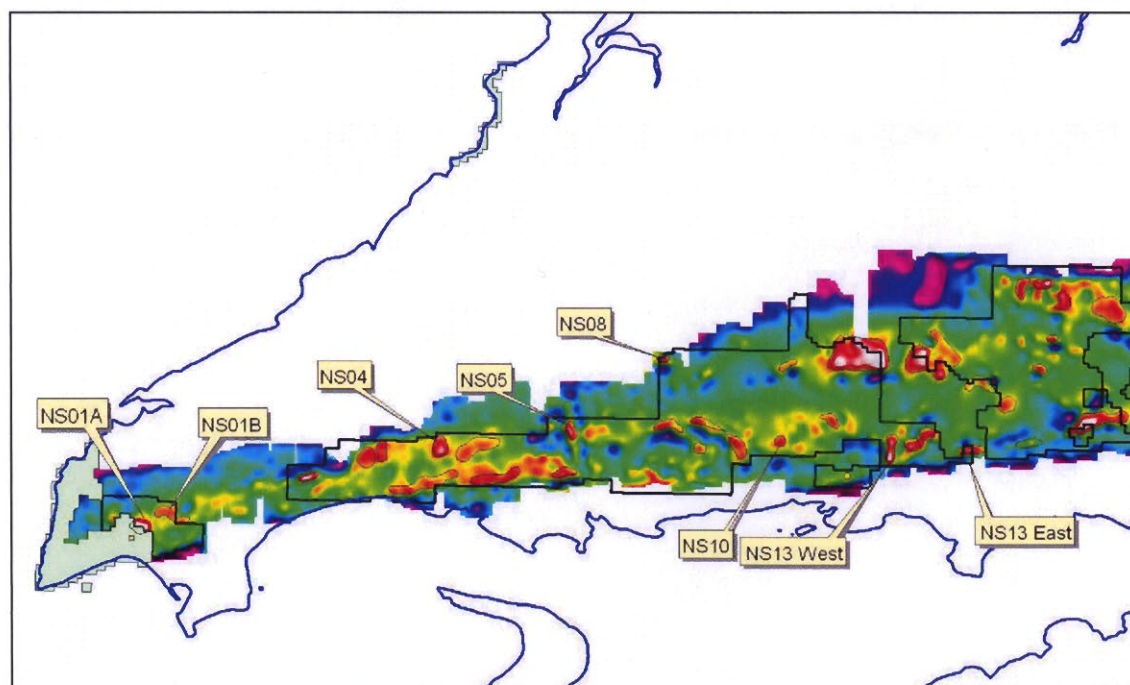
(C) Haematite matrix breccia from east Mines adjacent to Target NS27B.



(B) Carbonate-veined magnetite breccia from Bass River adjacent to Target NS23.



(D) Ankerite-siderite-chalcopyrite breccia from Copper Lake adjacent to Target NS59.



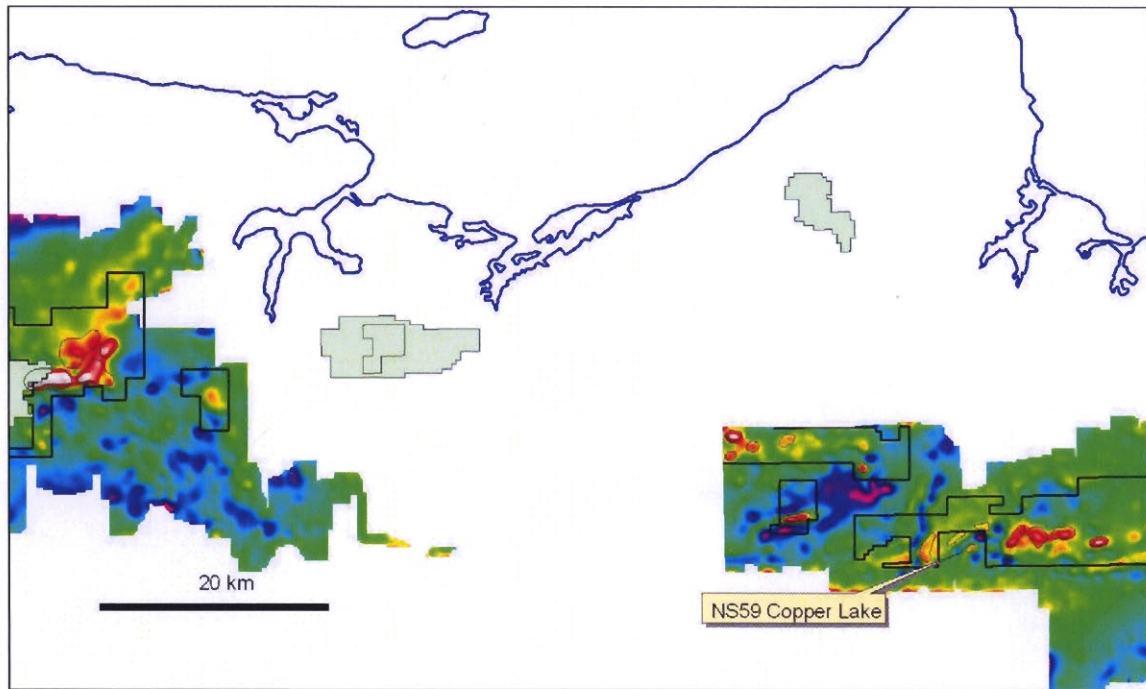
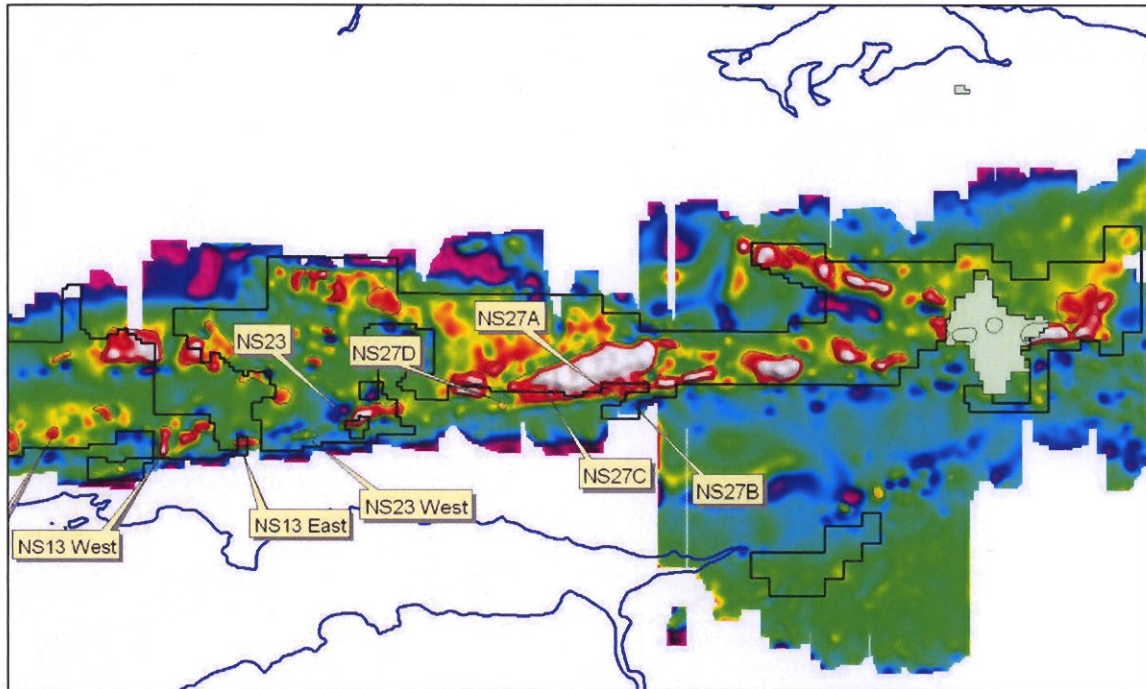


Figure 4. From West to East - High and Very High Priority Targets on Regional 1VD Gravity

TARGET	Easting	Northing	PRIORITY	SUMMARY COMMENT	Stations	Size	Data
NS01	371472	5031035	Low	Mapped gabbro, gabbro outcrop, magnetic linear	10	4.0	
NS02	376530	5032800	Med	Mapped Dev-Carb granite; possible folded gabbro	34	2.0	
NS03	377921	5033398	High	Nth part is non magnetic; stn part granite	24	1.5	
NS03 South	381573	5030602	Low	Linear, stratiform, possible edge effect of structur	12	2.0	
NS04	383092	5033790	High	Nth part is non magnetic; stn part magnetic ?gabbro	24	3.0	More grav needed
NS04 South	387864	5031139	Low	Linear, stratiform, possible edge effect of structur	24	2.4	
NS05	394641	5035199	Very High	Hanna Farm Pluton. Hematite altered granite	38	3.0	
NS05 South	394003	5031493	High	Adjacent magnetic body, off major structure	36	1.6	
NS06	403161	5035573	Med	Contact of Dev-Carb rhyolites and Precambrian	35	1.6	
NS07	408930	5034512	Med	Specular hm stringers in magnetic basalt	17	1.8	
NS07 South	405963	5033595	High	Nth end of West Moose River Pluton; Hm altered granite	12	1.6	More grav needed
NS08	402756	5041525	High	Triple point structural intersection, Dev-Carb gran	19	2.0	More grav needed
NS09	413742	5040911	Med	Most likely Dev-Carb gabbro-diorite	14	1.7	
NS10	412997	5034261	Med	Good structural position adjacent Dev-Carb granite	14	1.5	More grav needed
NS11	417300	5036031	High	Adjacent North River Pluton	20	1.3	
NS-11 South	418920	5031168	Med	Adjacent Five Islands; south of North River Pluton			
NS12	419930	5041966	Med	Most likely Dev-Carb gabbro-diorite			
NS13	424702	5033904	Med	Mapped as gabbro, gabbro outcrop			
NS-13 East	429867	5033464	Very High	On Cobequid Fault and Bass River magnetic linear	36	4.0	OK
NS-13 West	422806	5033542	Very High	On faulted contact of Pleasant Hills Pluton	40	4.0	OK
NS14	425989	5034892	Med	Mapped as gabbro, gabbro outcrop			
NS15	426532	5041840	Med	Most likely Dev-Carb gabbro-diorite			
NS16	430600	5039215	Low	Gabbro			
NS17	433012	5037458	Low	Gabbro			
NS18	435888	5040529	Low	Gabbro, diabase, magnetic basalt			
NS-18 North	437015	5043249	Low	Gabbro			
NS19	434427	5047610	Low	Dense volcanics			
NS1A Far West	356625	5026712	Very High	On structure linking Cape Chignecto Plutons; Hm veining	56	3.0	OK
NS-1B Far West	359383	5027704	Very High	On Dev-Carb granite contact; Spec Hm; Cu occurrence	39	1.8	OK
NS2	451582	5039947	Low	Mapped hybrid granite and gabbro outcrop			
NS20	436327	5048058	Low	Gabbro			
NS21	437892	5046708	Low	Gabbro			
NS22	441938	5045801	Low	Gabbro			
NS23	440945	5035904	Very High	Magnetite breccia (Bass River) SW End	23	3.0	OK
NS23 West	434929	5034112	High	Subtle Bass River magnetic linear; gabbro, magnetite	18	1.4	OK
NS24	449328	5037961	Low	Mapped hybrid granite and gabbro outcrop			
NS25	449291	5039112	Low	Mapped hybrid granite and gabbro outcrop			
NS27	460249	5039775	Med	Major gabbro complex - check periphery			
NS27a	461173	5037941	Very High	Subtle anomaly off Cobequid fault, offset to others	14	4.0	More grav needed
NS27b	463012	5037962	Very High	Subtle anomaly on Cobequid fault, adjacent to East Mines	10	3.0	More grav needed
NS27c	456419	5037701	Very High	Subtle anomaly on Cobequid fault, non magnetic	5	1.6	More grav needed
NS27d	452219	5036614	Very High	Subtle anomaly on Cobequid fault, non magnetic	7	2.4	More grav needed
NS28	469460	5039441	Low	Massive gabbro			
NS28 West	466039	5038800	Low	Gabbro			
NS29	475795	5040075	Med	Frog Lake Gabbro			
NS30	475814	5049789	Low	Dev-Carb Basalt			
NS-30 West	473423	5050752	Low	Basalt			
NS31	478130	5049875	Low	Dev-Carb Basalt			
NS32	480470	5048660	Low	Dev-Carb Basalt			
NS33	484224	5047386	Low	Dev-Carb Basalt			
NS34	490050	5046293	Low	Dev-Carb Basalt			
NS35	492640	5042910	Low	Frog Lake Gabbro			
NS-35 West	490476	5043511	Low	Frog Lake Gabbro			
NS36	495253	5043762	Low	Frog Lake Gabbro			
NS37	482577	5041549	Low	Gabbro			
NS38	486137	5040513	Low	Gabbro			
NS39	499712	5042989	Low	Gabbro			
NS-4 East	386387	5033481	Low	Precambrian volcanics, magnetic linear			
NS40	502484	5045637	Low	Frog Lake Gabbro, magnetic basalt			
NS41	503833	5043602	Low	Precambrian granite			
NS42	505016	5045752	Med	Neoproter Sandstone with no explanation for anomaly			
NS43	482073	5027830	Low	Basalt plug			
NS44	485151	5029211	Low	Basalt plug			
NS48	559302	5036391	Low	Precambrian granite-gabbro-syenite. Mag-grav complex			
NS49	561200	5037211	Low	Precambrian granite-gabbro-syenite. Mag-grav complex			
NS50	559529	5038093	Low	Precambrian granite-gabbro-syenite. Mag-grav complex			
NS58	564209	5037734	Low	Precambrian basalt, volcanics			
NS-58 East	570851	5035348	Low	Precambrian intrusive			
NS-58 South	565004	5031020	Low	Precambrian intrusive			
NS59 copper lake	580213	5028263	Very High	Subtle anomaly adjacent to Copper Lake siderite-cpx breccias	20	1.0	OK
NS59 north	579021	5029182	Med	Minor specular hm and siderite veinlets in sediments			
NS59 west	576454	5028357	Low	Weak anomaly in sediments			
NS-59 Northeast	581247	5030223	Low	small target, diorite in vicinity			
NS60	584160	5029343	Low	Magnetic basalt, stratiform			
NS-61	586087	5029264	Low	intermixed gabbro and siltstone			
NS62	588286	5029667	Low	Intermixed gabbro and siltstone			
NS63	591422	5028865	Low	Magnetic basalt, stratiform			
NS-64	597312	5031037	Low	Shale and basalt			
				11 rated Very High Priority (Drill testing highly recommended)			
				7 rated High Priority (Drill testing recommended)			
				14 rated Medium Priority (further field investigations required)			
				46 rated Low Priority (anomaly explainable - no further work need)			

Table 1. Ranking of 78 Gravity Targets

Drill Testing NS05

Target NS05 was drill tested in January 2009. The target, a robust 3 mgal unexplained gravity anomaly (Figure 5), occurs adjacent to the Hanna Brook Pluton. This oxidized granite shows evidence of extensive hydrothermal alteration in sporadic outcrops, with abundant haematite, epidote and sericite alteration present at a number of locations. It is one of an extensive series of c. 360Ma bimodal intrusives that occur along the Cobequid-Chedabucto Fault. Gravity modeling indicates an anomalous mass of approximately 1500 Mt, approximately 1km x 1 km x 0.5 km in dimension, and commencing about 50 metres below the surface.

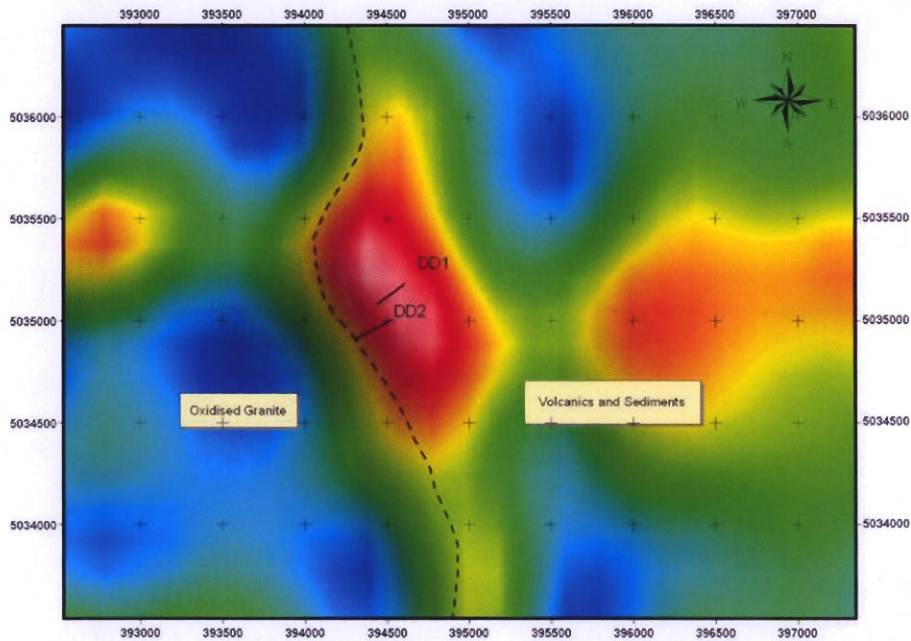


Figure 5. The NS05 gravity target with superimposed drillhole traces (NS05-08-DD1 and -DD2) and the granite – country rock boundary (dashed) as defined from geophysical data and sporadic outcrop.

Drilling of two holes across recorded a transition from volcanics and sediments in the east to orange-brown highly oxidised and haematite-rich granite to the west. The transition is marked by a significant number of brecciated and haematized granite dykes with up to 5% pyrite commonly developed along fracture planes (Figure 6), and interdispersed with massive and epidote-altered gabbro dykes. No significant mineralisation was recorded in the drillholes. The haematite alteration and gabbro dykes together most likely account for the gravity anomalism.



Figure 6. Brecciated and haematized granite with pyrite concentrations along fractures (Drillhole NS05-08-DD1 209m)

Drilling Recommendations

The twelve highest priority targets are proposed for drill testing. They provide targets geographically spread across the province, in a range of geotectonic settings, and subject to final landowner access agreement, the targets (**Table 2**) are essentially “drill ready”.

Initial drill testing should comprise a single diamond drillhole in to the modeled centre of the gravity source at each target. This will ensure a definitive answer on the source and cause of the gravity anomaly. Drill testing of targets across the province will capture any regionally significant changes in alteration and mineralization. This is an identical strategy to that used by Minotaur in its initial regional evaluation of the 4000 sq kilometers of Mt Woods Tenements in 2001 where twenty high priority targets were identified, six were selected for initial drill testing with a single hole in to each as part of a regional evaluation program in which the fourth hole becoming the Prominent Hill discovery hole, four of the six being barren.

Supporting technical information and modeling on each drill target is attached as **Appendix 1**.

NAD 83

DRILL HOLE	ANOMALY	EASTING	NORTHING	PRIORITY	AZIMUTH	DIP	DEPTH(m)
NS13W09-01	NS-13WEST	422460	5032675	1	90	-60	400
NS13E09-01	NS-13E	429450	5033250	2	360	-70	400
NS2309-01	NS-23 Grav Centre	439825	5035900	3	180	-70	500
NS2309-02	NS-23 Mag centre	438970	5036000	4	180	-70	500
NS5909-01	NS-59	580350	5028300	5	180	-60	300
NS1A09-01	NS-1A	356700	5026900	7	180	-70	500
NS0809-01	NS-08	402675	5041340	8	180	-60	200
NS23W09-01	NS-23WEST	435125	5033950	9	360	-70	400
Target	NS-27a	awaiting gravity modeling		10			est 250
Target	NS-27b	awaiting gravity modeling		11			est 250
Target	NS-27c	awaiting gravity modeling		12			est 250
NS27d09-01	NS-27d	453200	5036850	6	180	-60	250

Table 2. Twelve targets recommended for drilling in priority order

REFERENCES

- Corriveau, L., 2007. Iron oxide copper-gold deposits: a Canadian perspective. In: Goodfellow, W. D. (ed.) *Mineral deposits of Canada: a synthesis of major deposit-types, district metallogeny, the evolution of geological provinces, and exploration methods. Geological Association of Canada, Mineral Deposits Division, Special Publication no. 5, 2007; pages 307-328*
- Donohoe, H.V. and Wallace, P.I., 1983. Geological map of the Cobequid Highlands, Colchester, Cumberland and Pictou Counties, Nova Scotia. Sheets 1 to 4. *Nova Scotia Department of Natural Resources. Geological Atlas 1:50 000 Series, Maps ME 1982-006 to 1982-009.*
- Kontak, D.J., 2006. Nature of iron oxide, copper gold mineralisation along the Cobequid-Chedabucto fault system: an update on studies at Mount Thom and Copper Lake. In: Mineral Resources Branch, Report of Activities 2005. *Nova Scotia Department of Natural Resources, Report ME2006-1:67-98.*
- Murphy, J.B., Keppie, J.D. and Hynes, A.J., 1983. Geological map of the northern Antigonish Highlands, Nova Scotia. (sheets 11E/09, 11E/16, 11F/12 and 11F/13). *Nova Scotia Department of Natural Resources. Geological Atlas 1:50 000 Series. Map ME1982-005.*
- O'Reilly, G.A., 2002. Mineral inventory studies in mainland Nova Scotia for 2001. In: Mineral Resources Branch, Report of Activities 2001. *Nova Scotia Department of Natural Resources, Report ME2002-1:105-111.*
- O'Reilly, G. A., 2004. Mafic and felsic intrusions in Carboniferous rocks of central Nova Scotia. *Nova Scotia Department of Natural Resources, Report ME2005-1:73-92.*
- Pe-Piper, G., and Piper, D.J.W., 2005. Bedrock geology maps of the Cape Chignecto, Parrsboro, Wentworth and Earltown Areas, Cobequid Highlands, Nova Scotia. *Nova Scotia Department of Natural Resources, Open File Maps, ME 2005-114 to 2005-118, scale 1:50,000.*
- Wright, J.D., 1975. Iron deposits of Nova Scotia. *Nova Scotia Department of Mines, Economic Geology Series 75-1.*

APPENDIX

TECHNICAL INFORMATION ON PRIORITY TARGETS

- Priority 1 - Drill Target NS13 West**
- Priority 2 - Drill Target NS13East**
- Priority 3 - NS23 Gravity Target**
- Priority 4 - NS23 Mag-Grav Targets**
- Priority 5 - Drill Target NS59**
- Priority 6 - Drill Target NS27D**
- Priority 7 - Drill Targets NS01A**
- Priority 8 - Drill Target NS08**
- Priority 9 - Drill Target NS23 West**
- Priority 10 - Drill Target NS27A**
- Priority 11 - Drill Target NS27B**
- Priority 12 - Drill Target NS27C**

Priority 1 - Drill Target NS13 West

Gravity Target NS13West is an intense North-South anomaly lying on the faulted western margin of the oxidized Late Devonian-Early Carboniferous Pleasant Hills Pluton. It is 4.0 milligals in amplitude, 2 kilometres in length and 0.5 kilometre wide. The gravity anomaly is wholly coincident with a late stage brittle fault that is normal to the main Cobequid Fault.

The southern part of the gravity target coincides with the western end of the intense Bass River magnetic linear, but is itself entirely non-magnetic. Thus Target NS13West complements Target NS13East in that it represents a dense and non-magnetic body whereas NS13East represents a dense and highly magnetic body. These are interpreted as haematite-related and magnetite-related features respectively. Field investigations have recorded isolated outcrop of reddish-brown, intensely haematite-altered granite with up to 2% pyrite around the margin of the anomaly with no significant outcrop over the target.

A number of hydrothermal magnetite breccia occurrences with high levels of pyrite and cobalt have been discovered by prospectors along the intense Bass River magnetic linear. Breccia clasts include fragments of pink granite identical to the Pleasant Hills Pluton, and magnetite formation is interpreted to be related (O'Reilly, 2002).

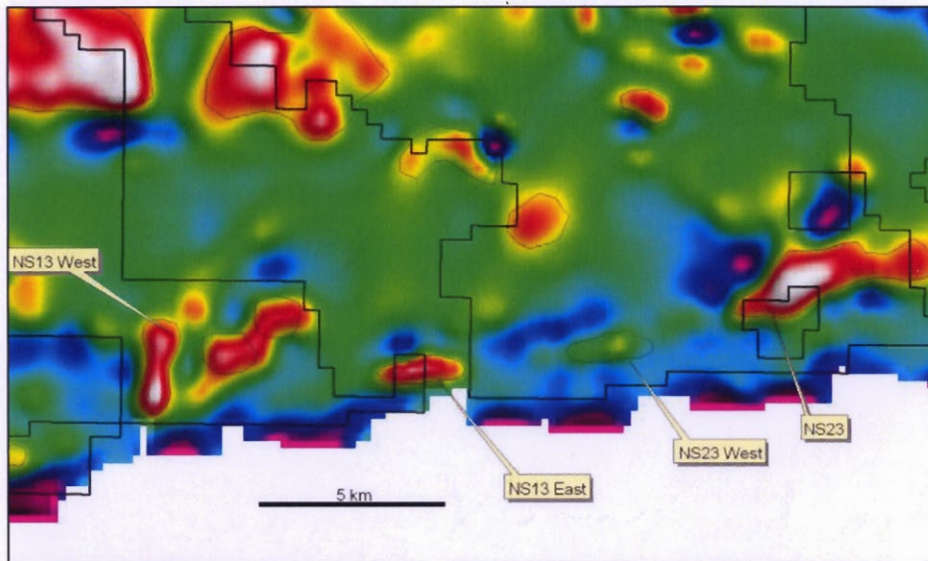
Inversion modeling of Target NS13West gravity data suggests a dense linear body coming close to ground level in the south, and plunging toward the north.

Subject to access, a 400m drillhole at the shallower southern end of the gravity anomaly is recommended.

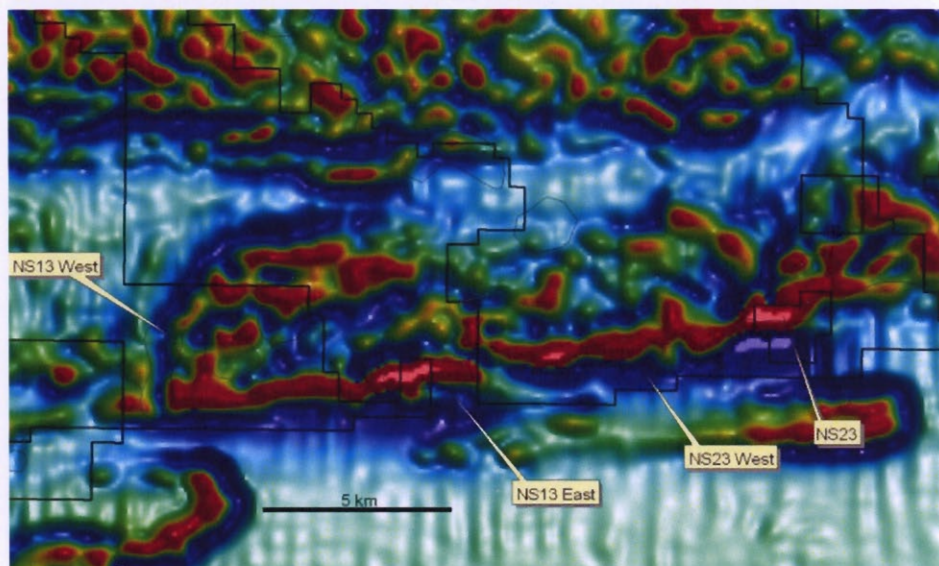
Drill Collar

422460E, 5032675N (NAD83, NUTM20).

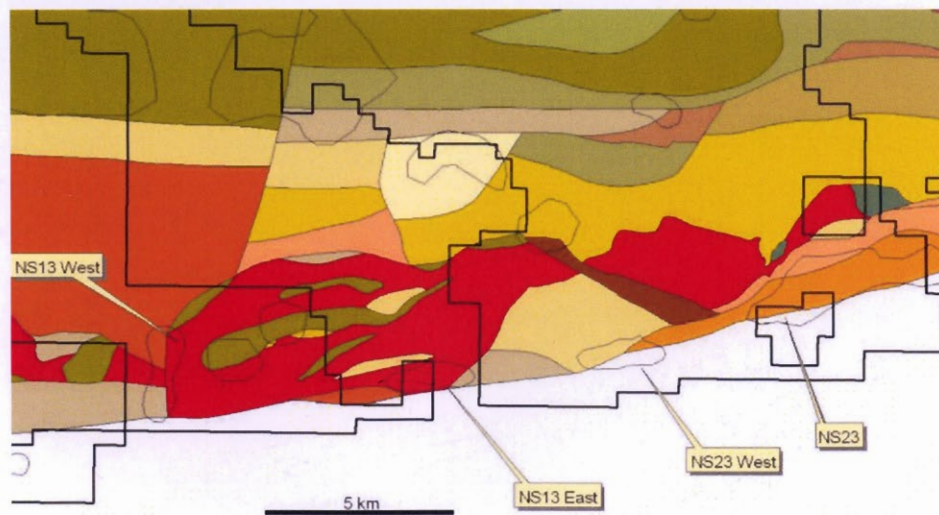
-60 degrees towards 090 degrees T. EOH: 400m



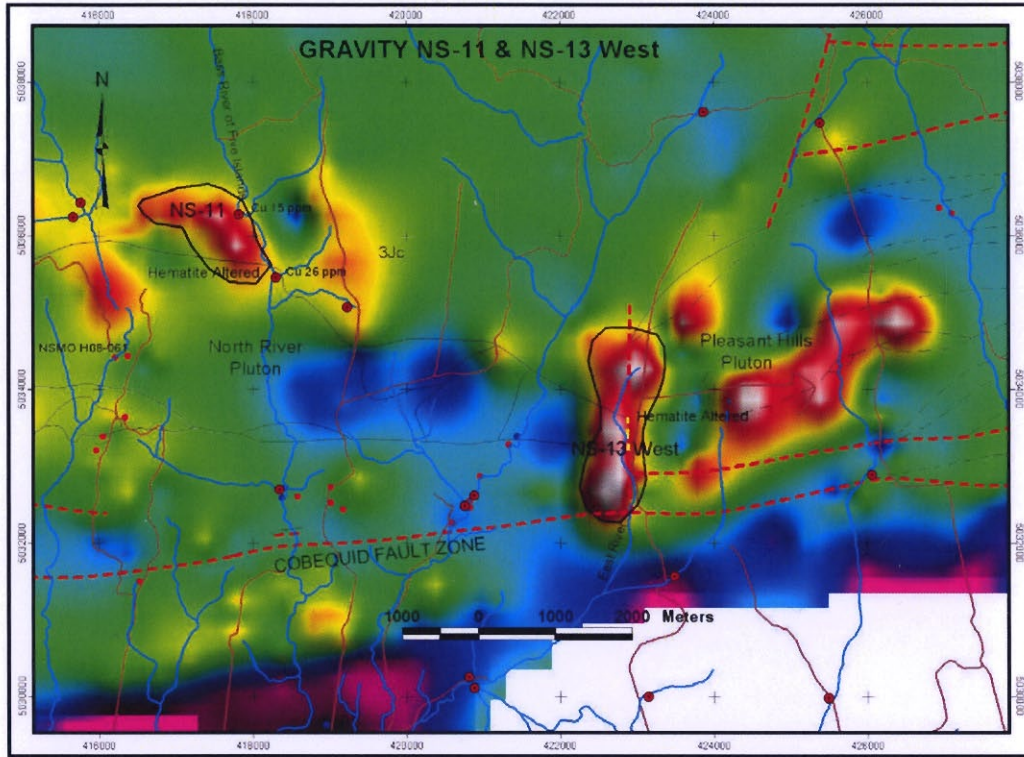
Regional 1VD Gravity



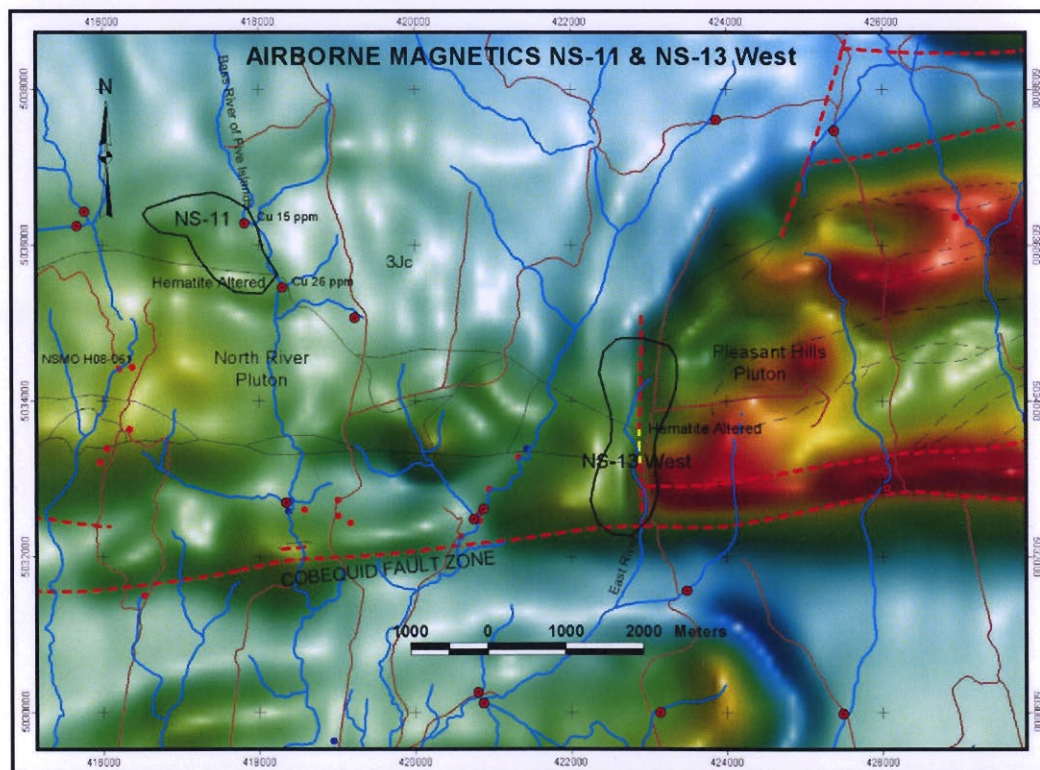
Regional RTP TMI



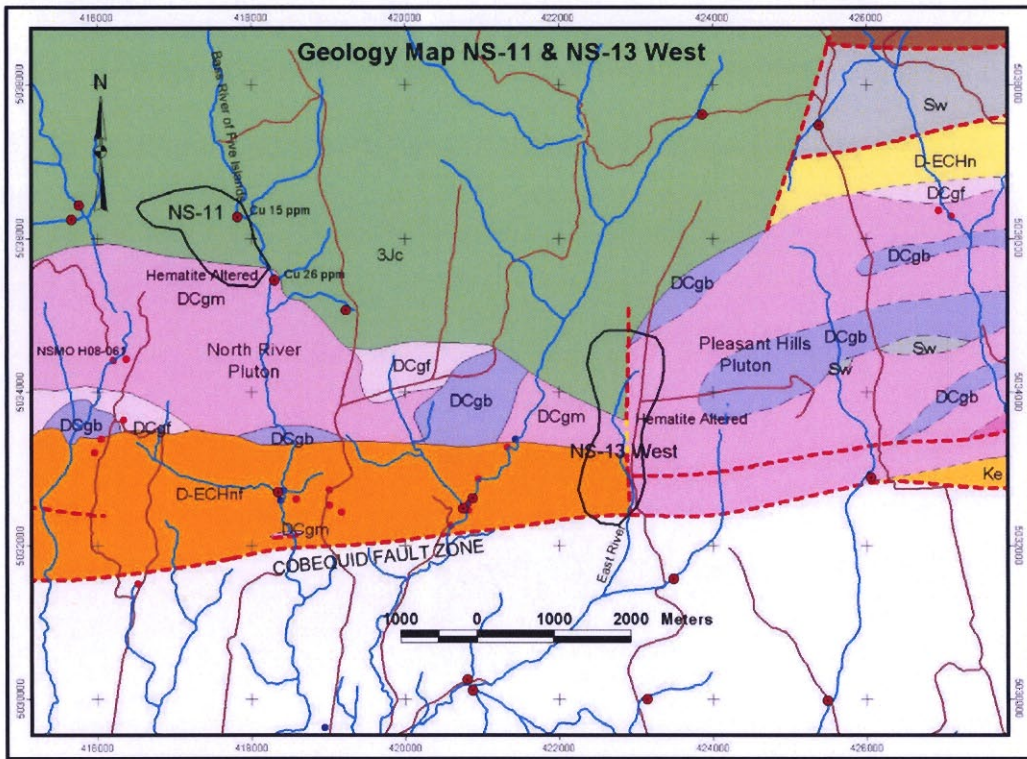
Regional Geology – (Red is Pleasant Hills Pluton)



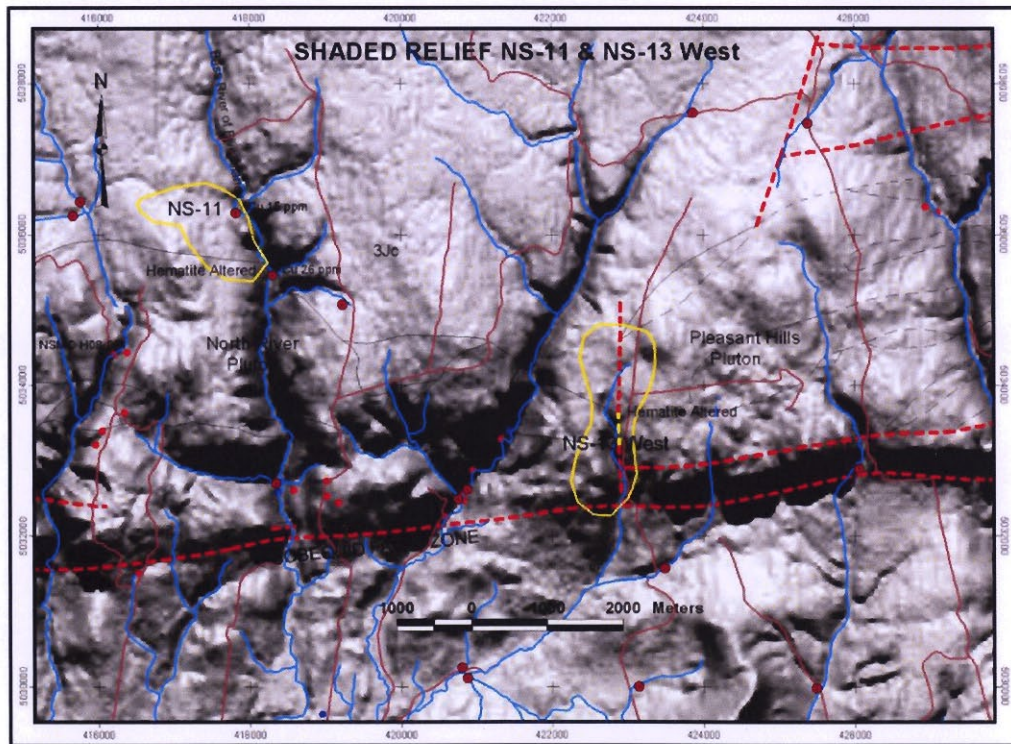
NS13West 1VD Gravity



NS13West RTP TMI

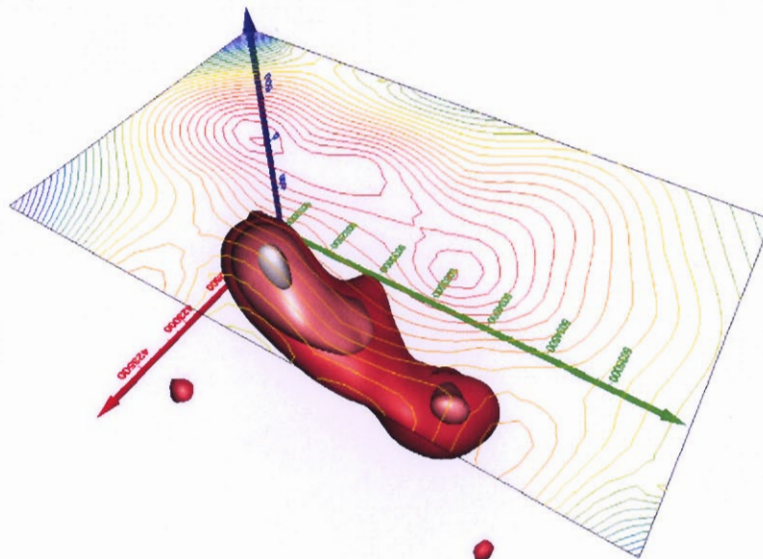
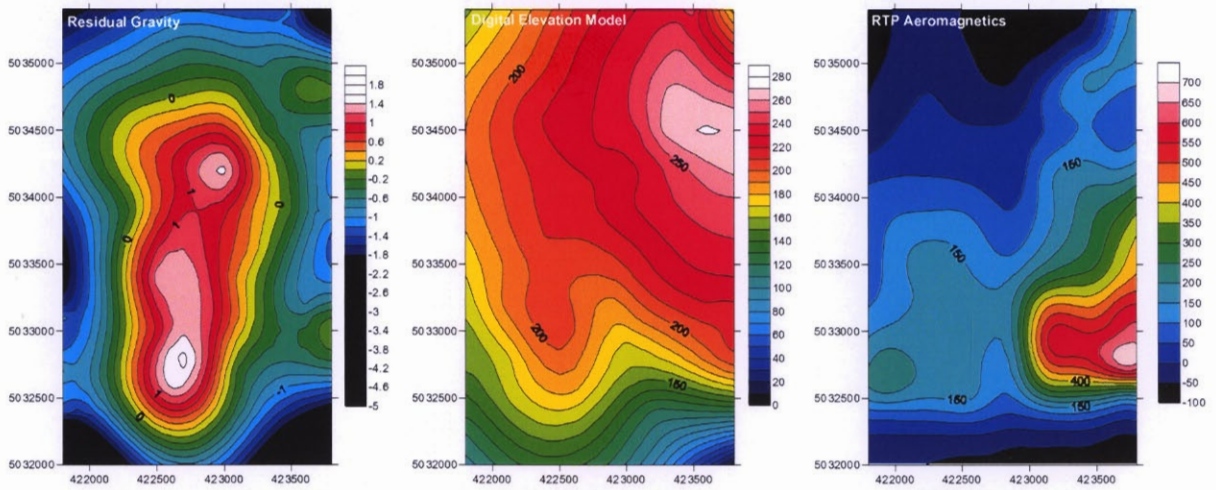


NS13West Geology Pe-Piper & Piper

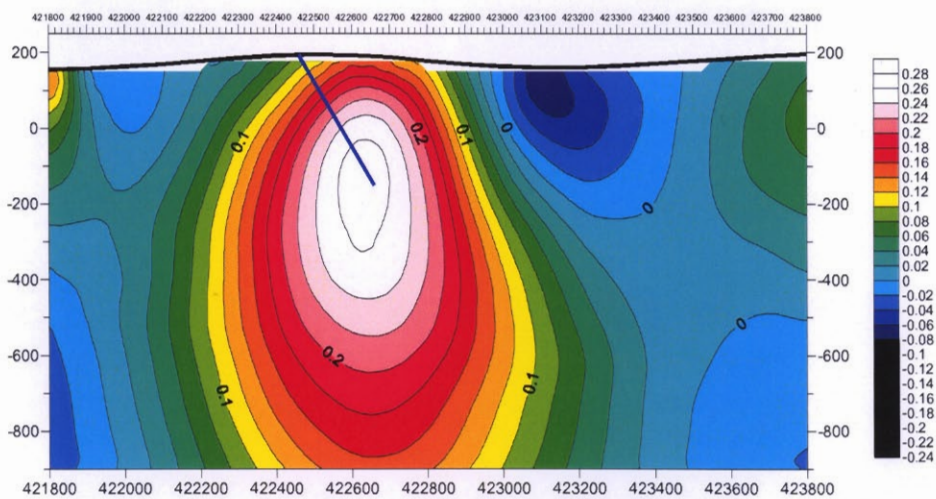


NS13West – Shaded Relief

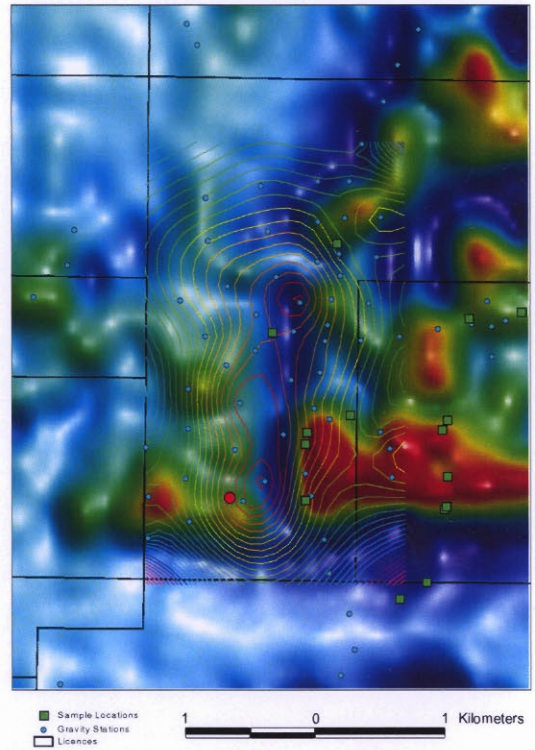
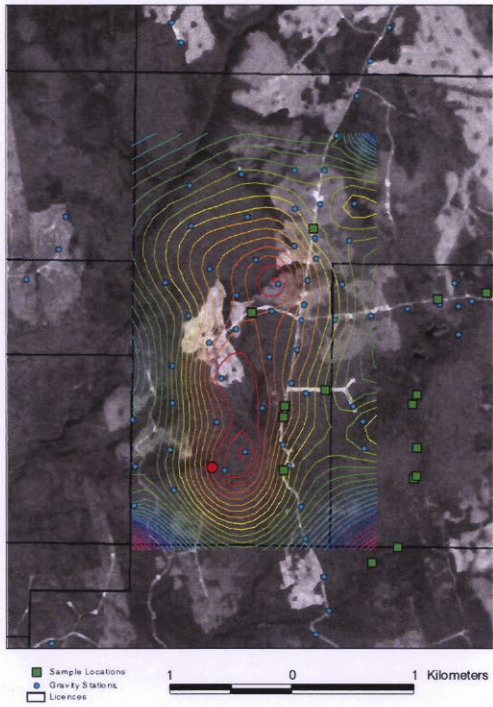
Gravity-Mag 3D Modeling Outputs – NS13West



Line 5032675N



Proposed Drill Collar at 422460E, 5032675N (NAD83, NUTM20)
 -60 degrees towards 090 degrees T. EOH: 400m.



NS13 West Proposed Drillhole Collar (red) and gravity contours on satellite and magnetic images

Priority 2 - Drill Target NS13East

Gravity Target NS13East is a discrete elongate gravity anomaly lying on the Cobequid Fault. It is 4.0 milligals in amplitude, 2 kilometres in length and 0.75 kilometre wide. The gravity anomaly is wholly coincident with the intense linear magnetic anomaly that comprises the Bass River magnetic linear. Elsewhere along the Cobequid Fault, this 23 km long intense magnetic linear is associated with sporadic outcrop of magnetite-sulphide breccia. Breccia clasts include fragments of pink granite identical to the Pleasant Hills Pluton, and magnetite formation is interpreted to be related (O'Reilly, 2002).

The target is constrained on three sides, but is largely outside of, the Economy River Wilderness Area.

Geological mapping suggests the gravity anomaly coincides with the southern faulted and mylonitised margin of the oxidized Late Devonian-Early Carboniferous Pleasant Hills granite pluton, though outcrop has not been located in the vicinity of the target. Five kilometers to the west, haematite-rich granite with 1-2% chalcopyrite plus pyrite is present at location AN13-10 and strongly foliated granite is recorded elsewhere along this section of the Cobequid Fault indicating syn- and post- intrusive movement along the structure. The target also coincides with the divergence point of the Londonderry, Rockland Brook and Cobequid Faults.

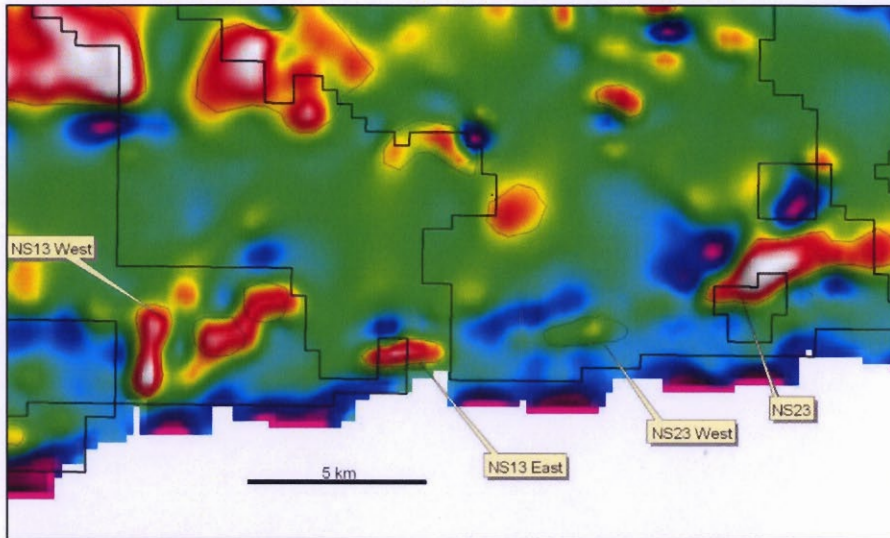
Inversion modeling of Target NS13E gravity data suggests a dense source from near surface to 1000m below ground level.

A 400m drillhole in to the centre of the gravity anomaly is recommended.

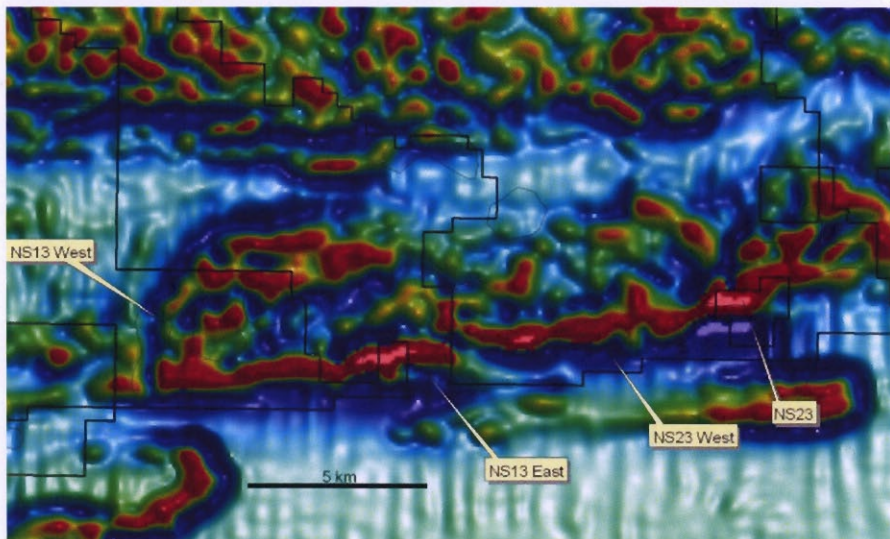
Gravity Target Drill Collar

429450E, 5033250N (NAD83, NUTM20).

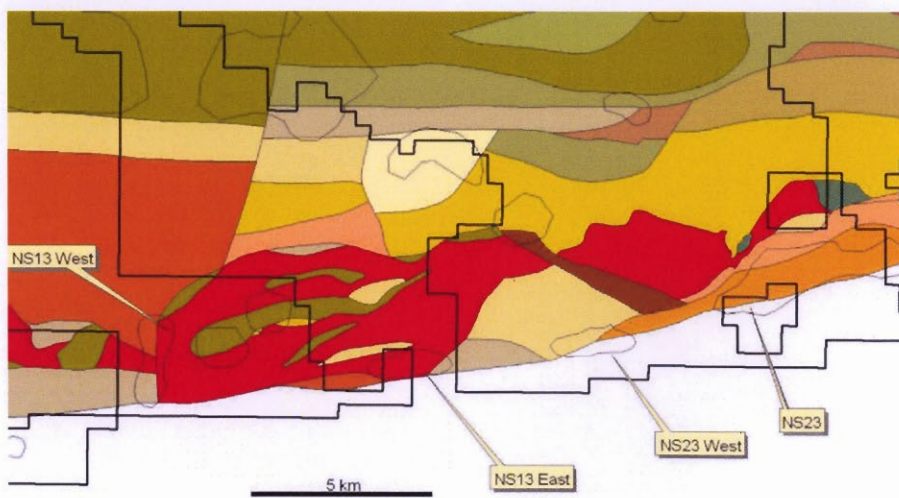
-70 degrees towards 000 degrees T. EOH: 400m



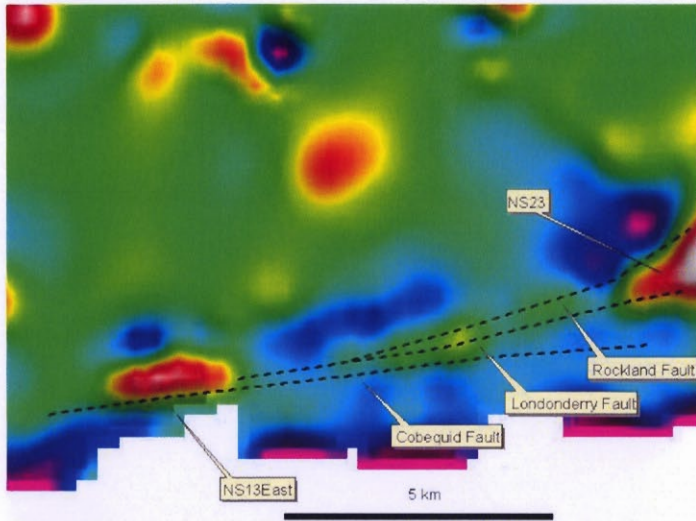
Regional 1VD Gravity



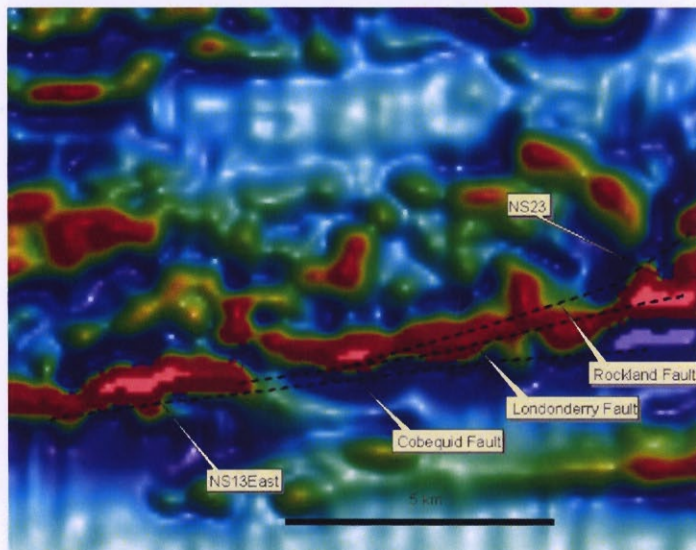
Regional RTP TMI



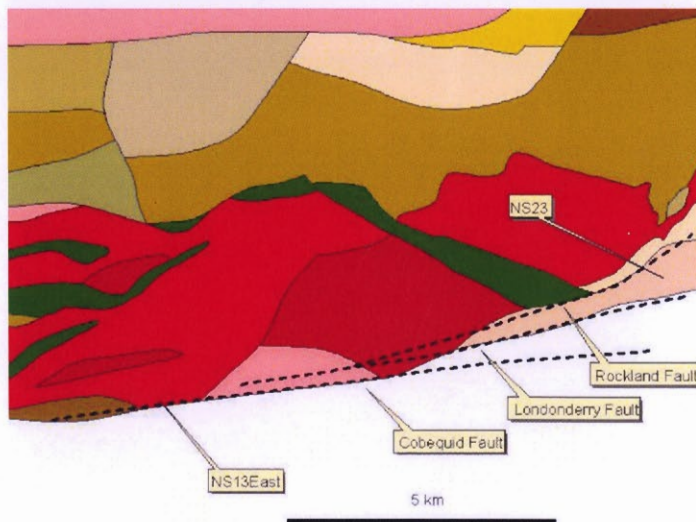
Regional Geology – Pe-Piper and Piper



NS13East 1VD Gravity with major mapped fault structures

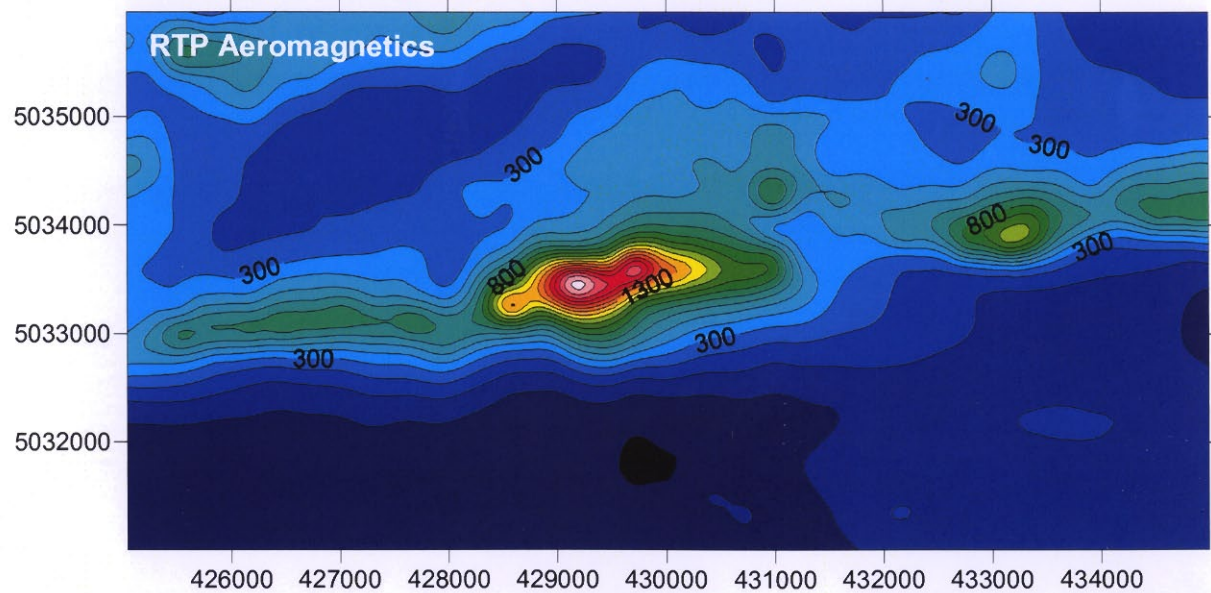
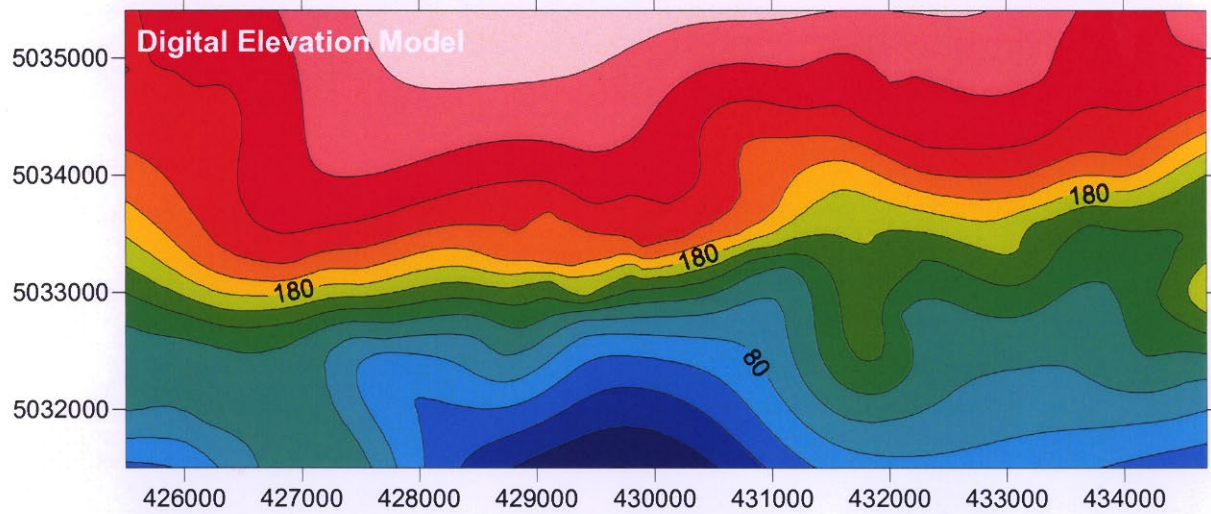
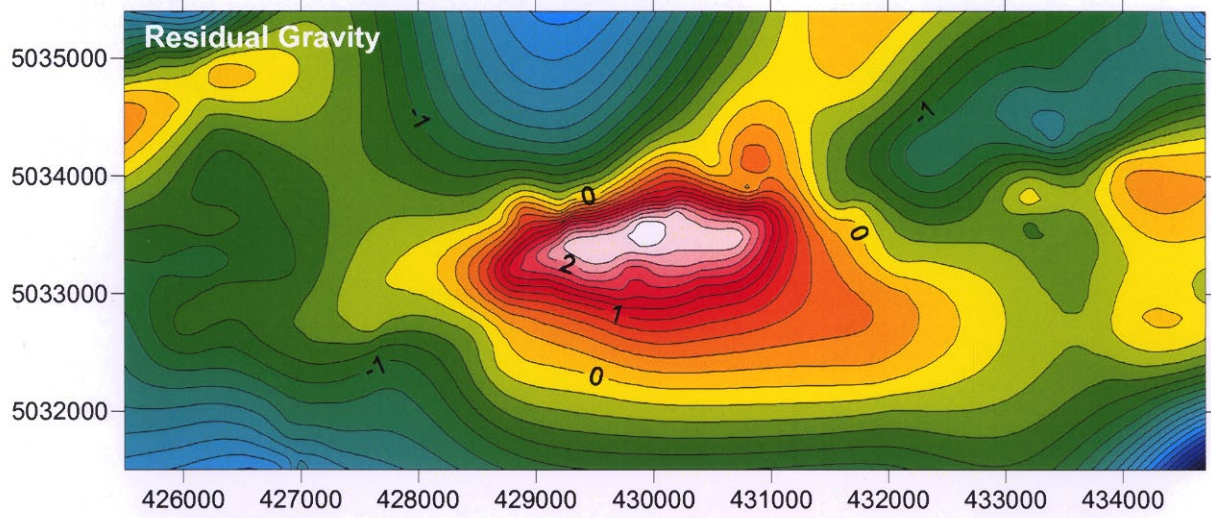


NS13East RTP TMI

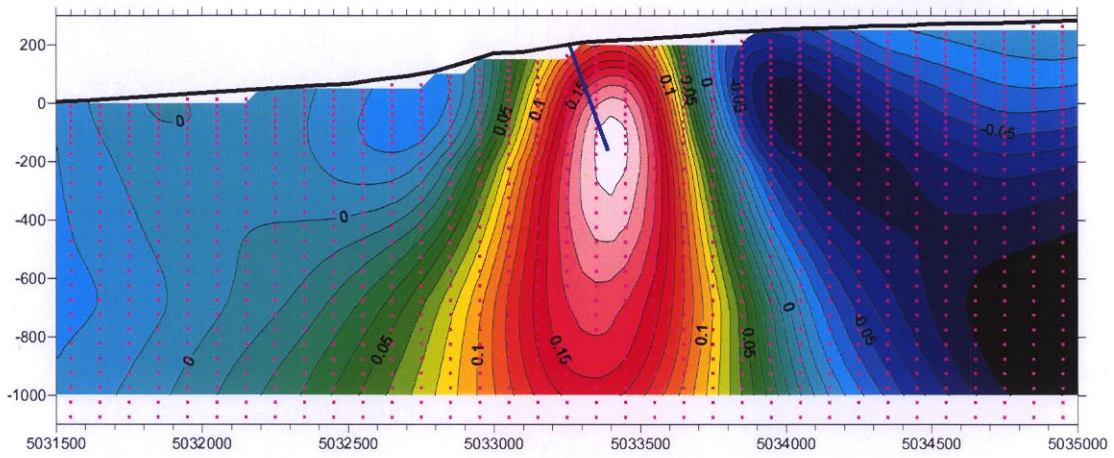


NS13East Geology

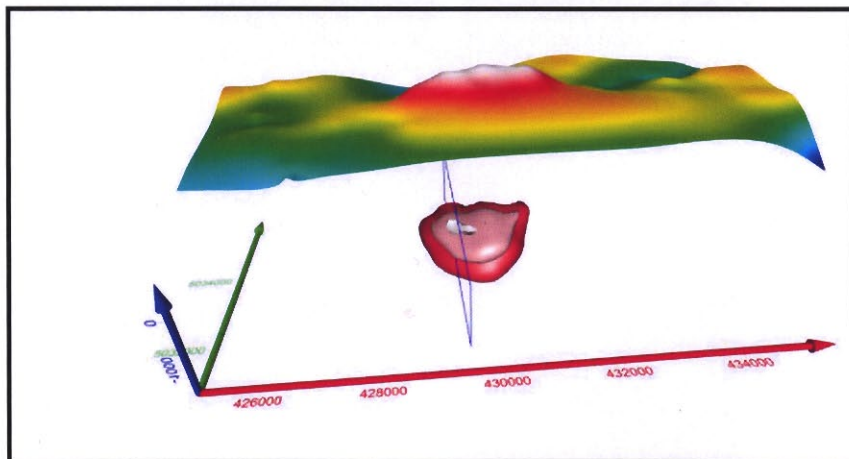
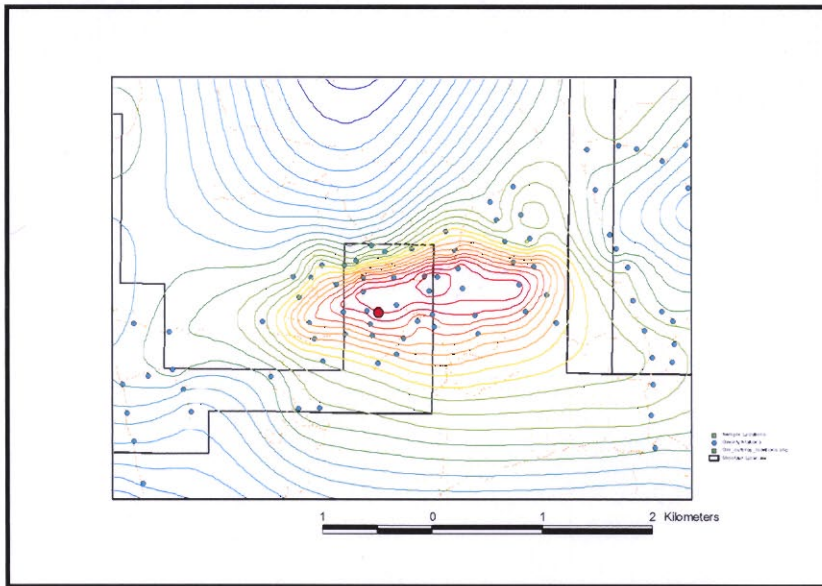
Gravity-Mag 3D Modeling Outputs – NS13East



Line 429450E



Proposed Drill Collar at 429450E, 5033250N (NAD83, NUTM20).
-70 degrees towards 000 degrees T. EOH: 400m.



Priority 3 and 4 - NS23 Gravity and Mag-Grav Targets

Gravity Target NS23 is a strong, elongate gravity feature between the Rockland Brook and Londonderry Faults. It is 3.0 milligals in amplitude, 3 kilometres in length and 1 kilometre wide. The gravity anomaly at NS23 is partly coincident with an intense linear magnetic anomaly giving rise to two principle target types, viz. dense-magnetic, and dense-non magnetic. The intense magnetic linear is associated with a number of magnetite-sulphide breccias outcrops and further westward, is coincident with gravity anomaly targets NS23 West and NS13 East.

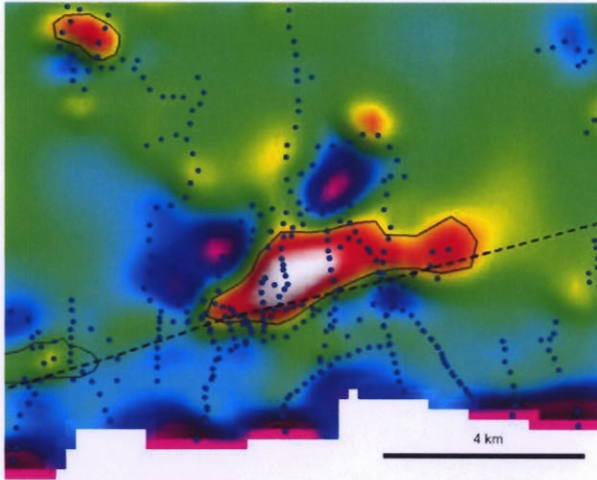
Geological mapping refers to this region between the two faults as a tectonic slice of Neoproterozoic rocks. Late Devonian-Early Carboniferous granites are present immediately to the north and west along the Rockland Brook Fault. The granite is a coarse, oxidized, high-level intrusive that is strongly haematized. Sporadic outcrop in the field includes mafic intrusive, haematized granite, granite with magnetite-chlorite veining, quartzite and magnetite breccias in and around the anomaly. The intense magnetic linear follows the Londonderry Fault complex and most likely represents discontinuous fault-controlled emplacement of hydrothermal magnetite breccias as exposed in the Bass River magnetite workings. High sulphide content, brecciated fragments of sandstone host rocks, late stage carbonate veining and elevated cobalt are associated features of the magnetite breccias. Barite and trace chalcopyrite were observed by Monster Copper (AR2004-074) including one sample recording 2894 ppm Cu. A bulk sample of magnetite breccia from the Bass River workings averaged 500 ppm cobalt.

Inversion modeling of Target NS23 gravity data suggests a dense source from 250 to 1000m below ground level. The southern part of the gravity anomaly overlaps the intense magnetic anomaly that straddles the Londonderry Fault and is associated with the magnetite breccia exposed in the Bass River magnetite workings.

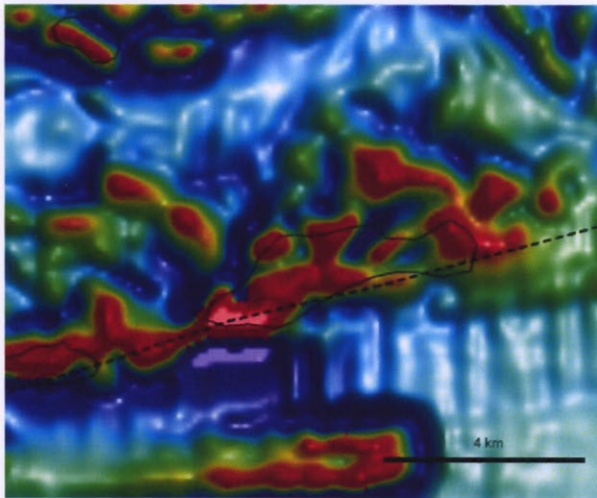
A drillhole in to the centre of the gravity anomaly and a separate drillhole in to the magnetic anomaly are recommended.

Centre of Gravity Anomaly Drill Collar
439825E, 5035900N (NAD83, NUTM20).
-70 degrees towards 180 degrees T. EOH: 500m.

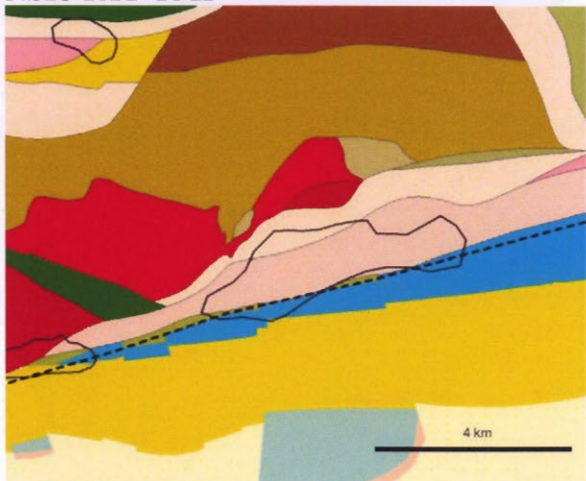
Magnetic-Gravity Centre Drill Collar
438970E, 5035000N (NAD83, NUTM20).
-70 degrees towards 180 degrees T. EOH: 500m. If access is an issue, an acceptable alternative is in the Bass River magnetite breccia quarry 60 metres to the south at 439010E, 5034910N



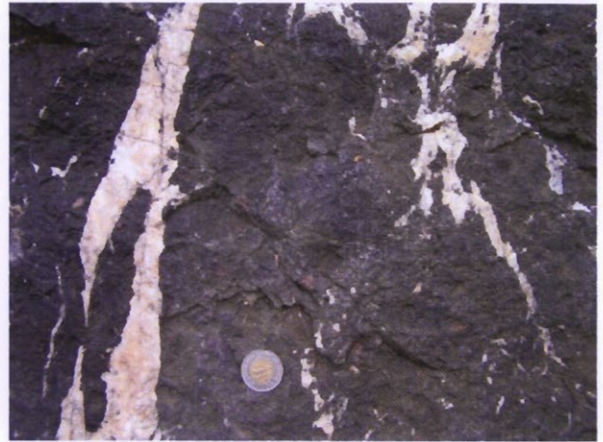
NS23 1VD Gravity



NS23 RTP TMI

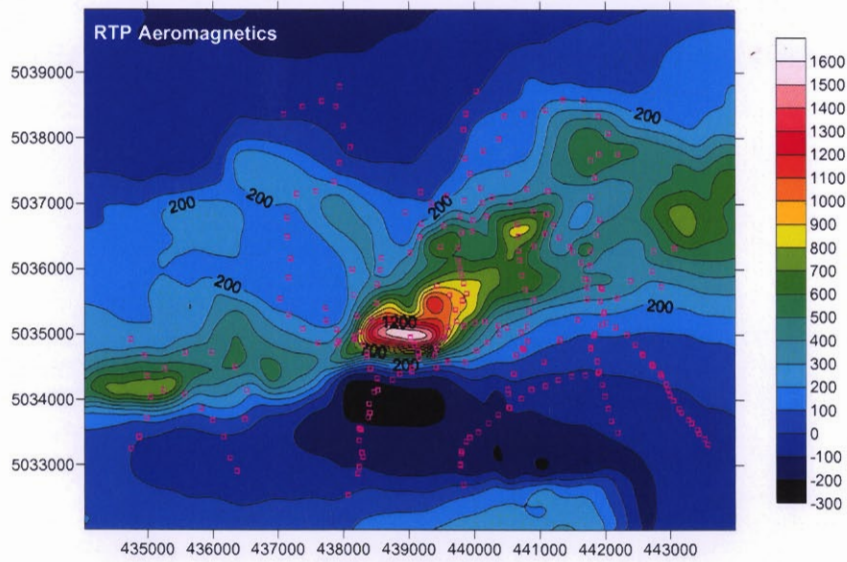
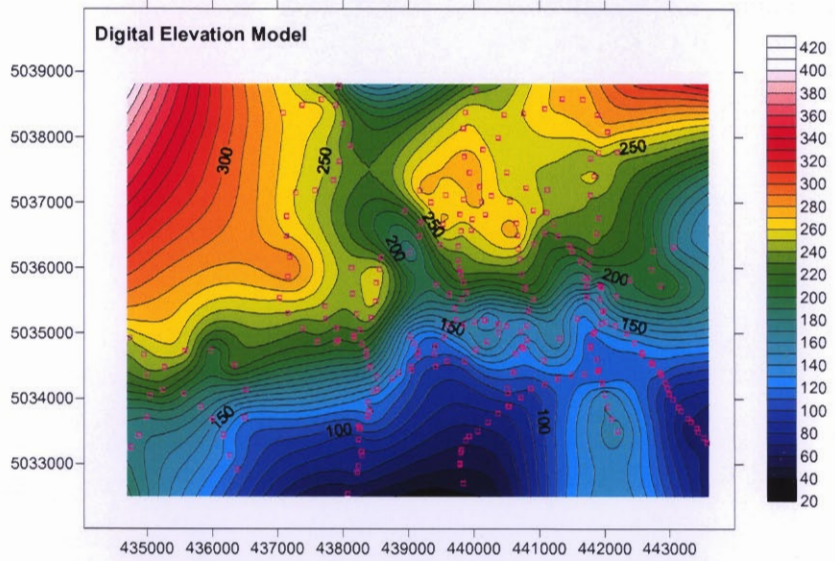
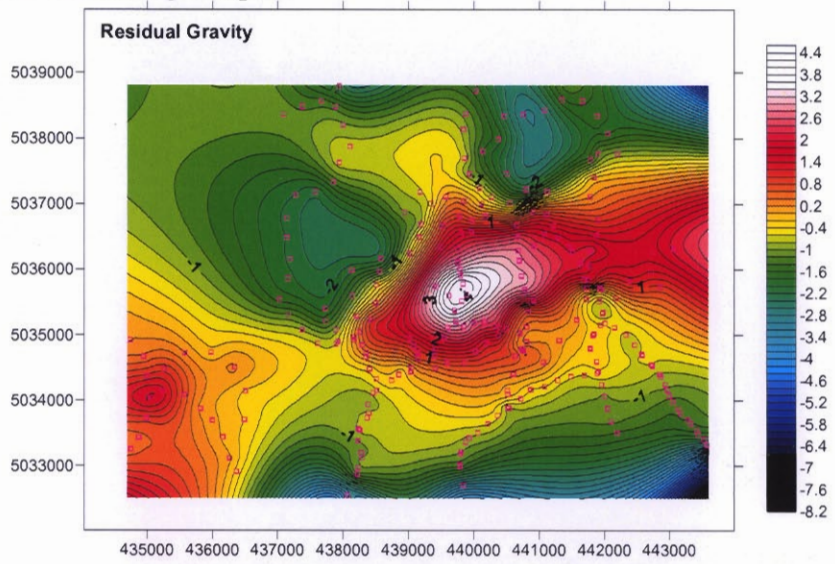


NS23 Geology

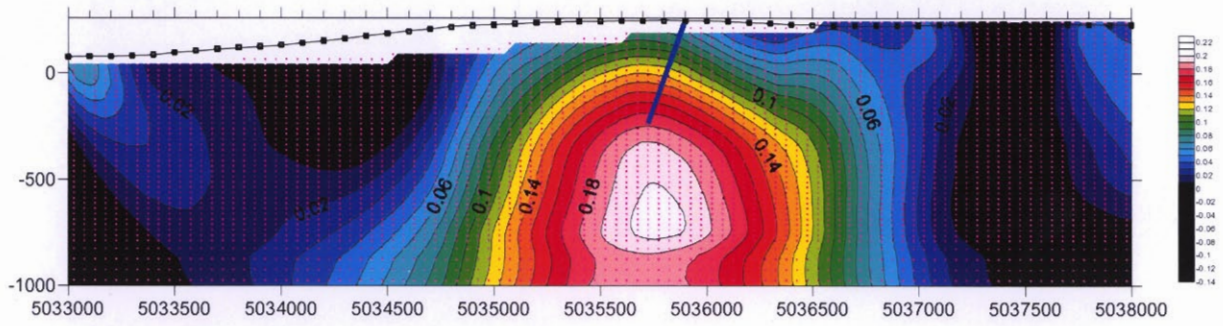


Massive magnetite with abundant pyrite (greenish black) and late white calcite veins at the Bass River magnetite quarry

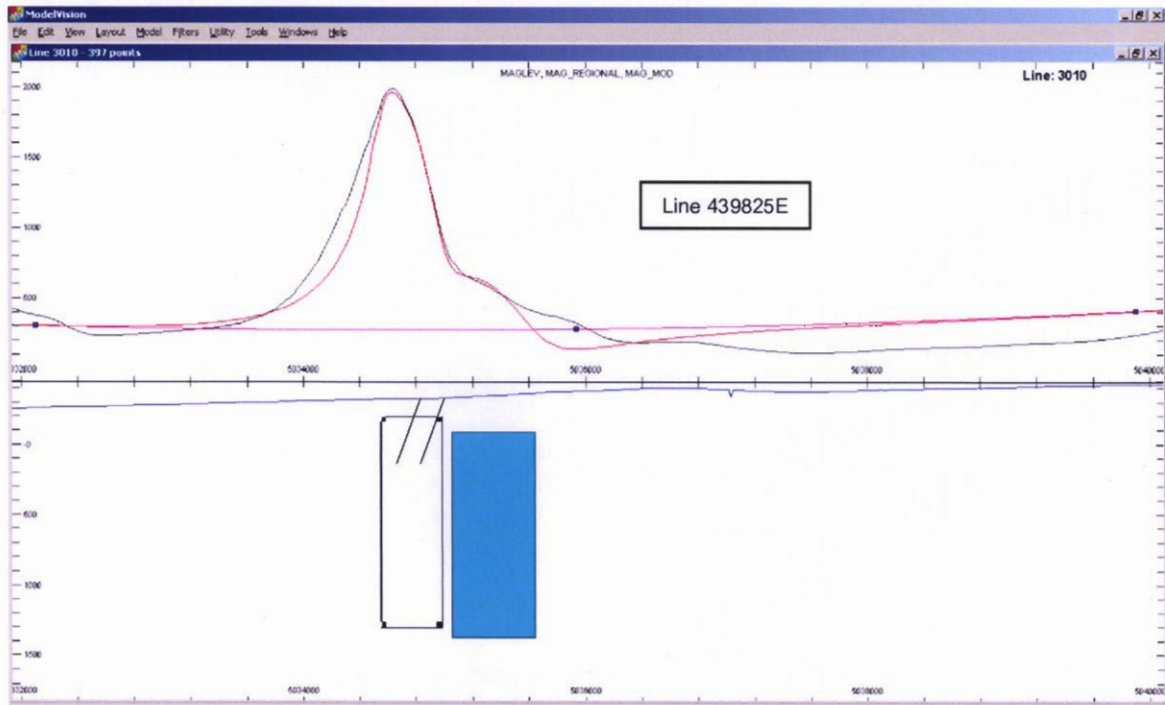
Gravity-Mag 3D Modeling Outputs



Line 439825E



Centre of Gravity Anomaly Drill Collar
439825E, 5035900N (NAD83, NUTM20).
-70 degrees towards 180 degrees T. EOH: 500m.



Magnetic Centre Drill Collar
438970E, 5035000N (NAD83, NUTM20).
-70 degrees towards 180 degrees T. EOH: 500m.

An acceptable alternative is in the old quarry at 439010E, 5034910N 60 meters to the south.

Priority 5 - Drill Target NS59

Gravity Target NS59 is a discrete but subtle gravity anomaly a few hundred metres to the southeast of the historic Copper Lake copper workings where strong chalcopyrite mineralisation is developed in a dense ankerite-siderite host. The gravity target is 1.0 milligals in amplitude and covers an area of 0.8 x 0.4 kilometres. This target straddles two tenements, EL13244 (Blackfly) and EL12820 (Elk) over which options are held by Minotaur-Dundee.

Target NS59 is the closest gravity anomaly to the historic Copper Lake ankerite-siderite-chalcopyrite vein and breccias workings. Previous exploration in this area is summarized by Monster Copper (AR2004-072; AR2005-029). Historic production of 1200 tons of ore at a grade of 5.5% copper is recorded. Drilling by Novamines in the 1960's proximal to the workings returned up to 5.2m @ 2.01% Cu from discrete ankerite-chalcopyrite veins, and also confirmed the discrete magnetic highs in the vicinity were due to diorite intrusives. Drilling by Medyx in the 1990's intersected argillaceous sequences with abundant ankerite-sulphide veining, haematite development along fractures and sericite alteration of sediments. Drilling by Monster Copper of IP/Chargeability highs out to 1 kilometre from the workings intersected graphitic sources in argillaceous sediments, but with widely dispersed thin veining and anomalous Cu-Au mineralization in each hole (e.g. 0.7m @ 0.15% Cu, 2.28m @ 0.18 g/t Au).

There is limited to no outcrop (argillaceous siltstones) over the gravity anomaly. In addition to mineralization at the proximal Copper Lake workings and in past drilling, the gravity target is associated with a 3200 ppm Cu in stream geochemical anomaly, the second highest of the 8200 samples collected in government regional surveys across Nova Scotia.

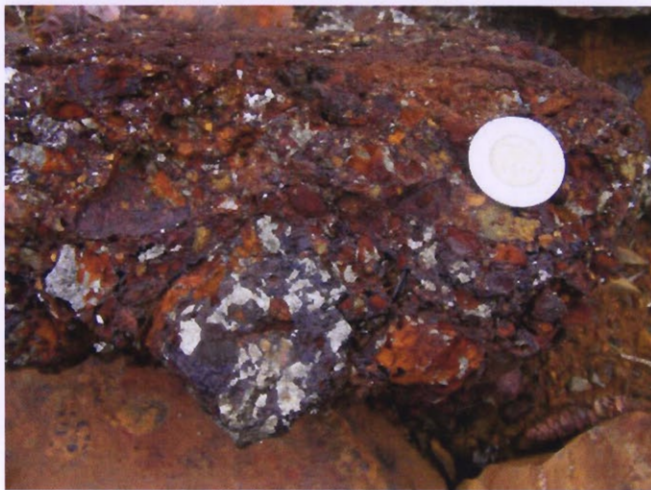
The target is not magnetic eliminating the subcircular diorite intrusives in the region as a cause, there is nothing dense in outcrop, and is interpreted to represent a larger accumulation of ankerite-siderite-chalcopyrite breccia in the subsurface as exposed at the historic workings.

Inversion modeling of Target NS59 gravity data supports the model of a denser body existing within the argillaceous shales. A drillhole is recommended in to the centre of this body with collar:

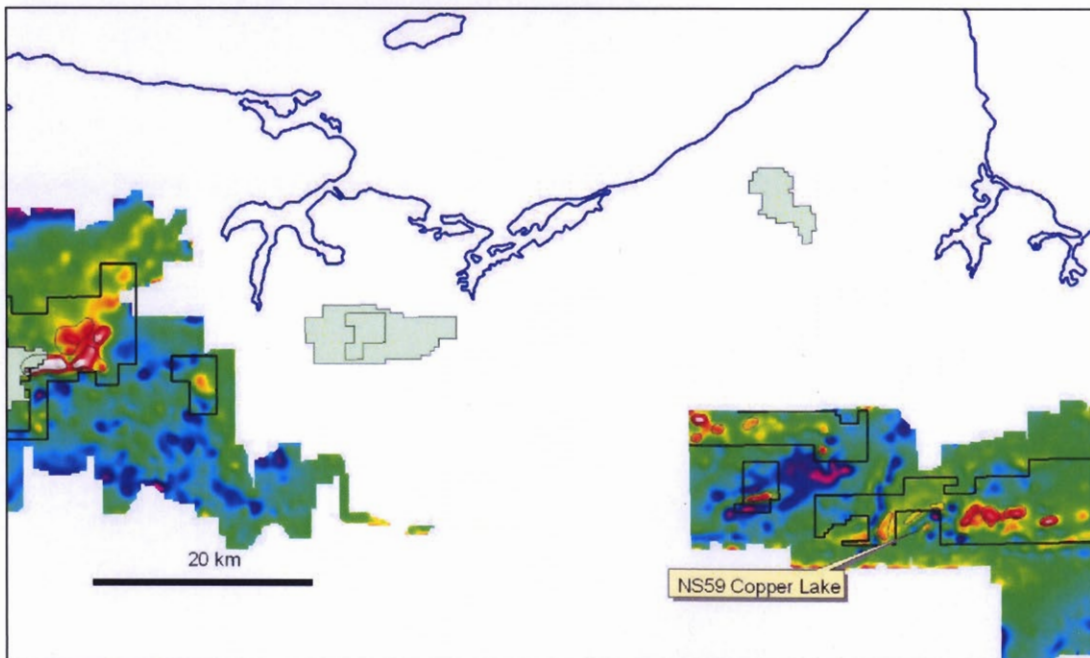
580350E 5028300N (NAD83, NUTM20)
-60 degrees towards 180 degrees T. EOH 300m



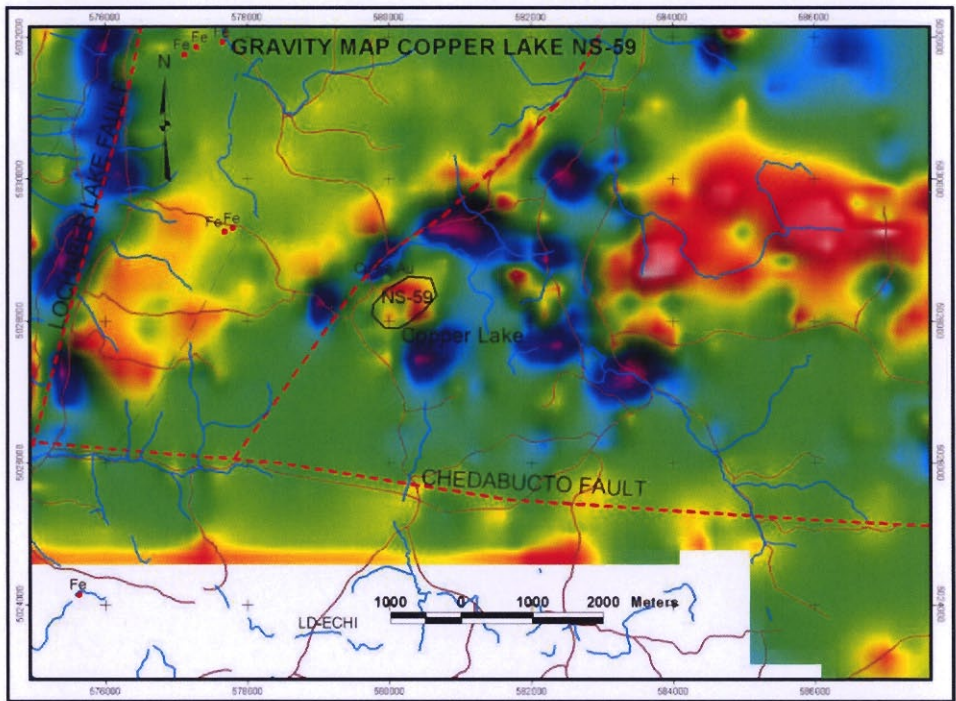
Copper Lake breccia - ankerite (pale brown), siderite (dark brown) and chalcopyrite (yellow)



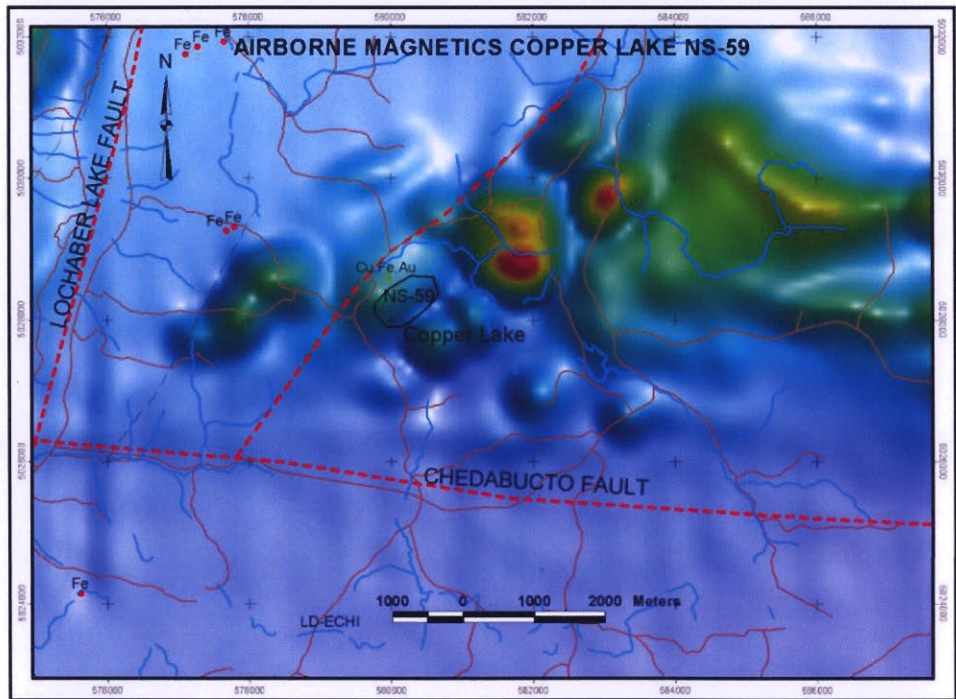
Breccia at Copper Lake comprising matrix rich in limonite and pyrite



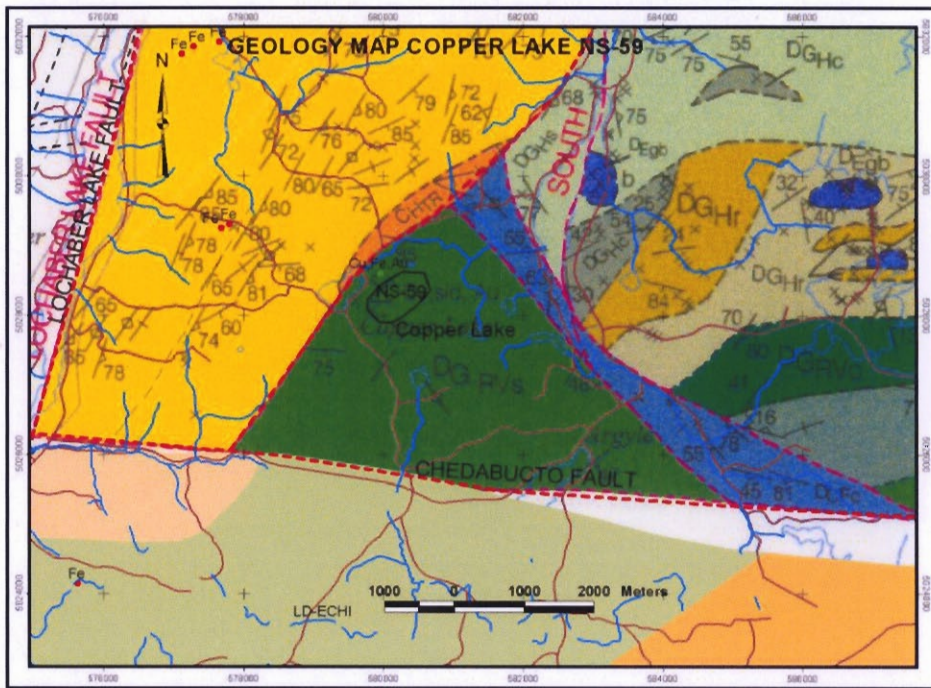
Regional 1VD Gravity



NS59 1VD Gravity



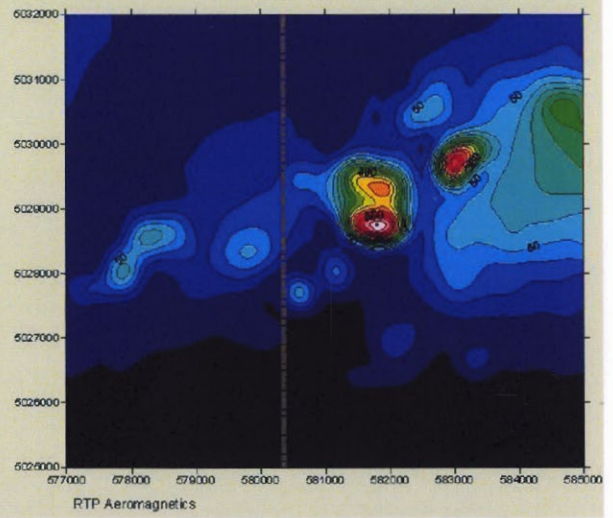
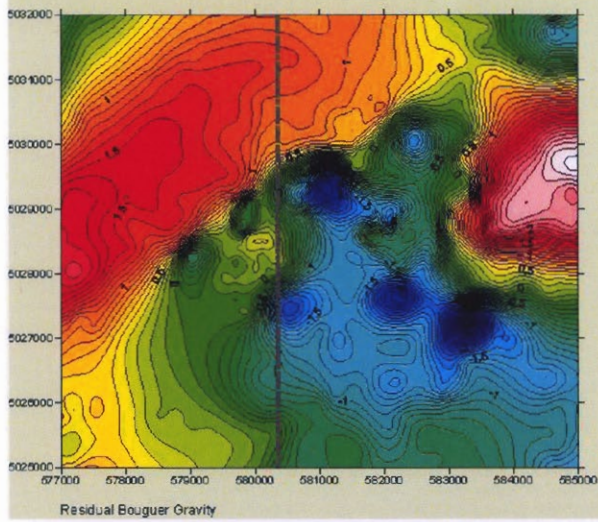
NS59 RTP TMI



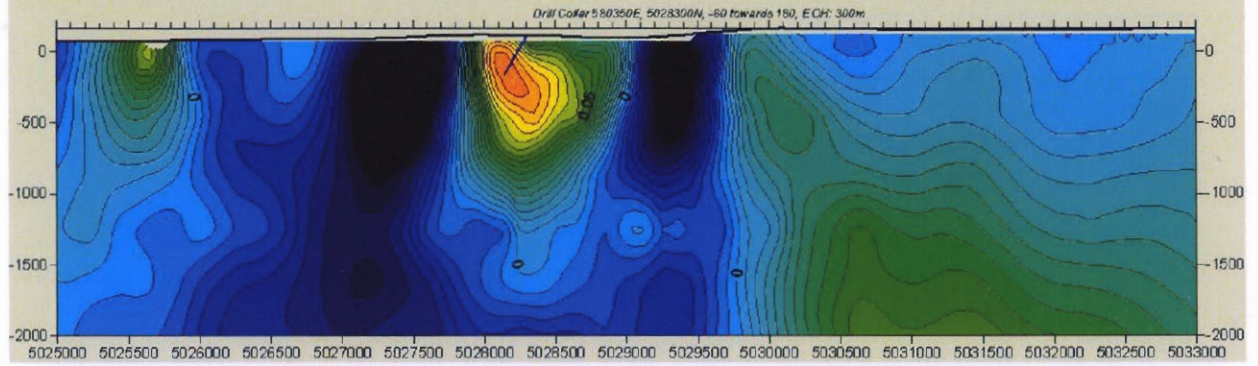
NS59 Geology

Gravity-Mag 3D Modeling Output – NS59

Copper Lake Area



Line 580350E



Priority 6 - Drill Target NS27D

Gravity Anomaly NS27 is an extremely large (12 x 4 km), deep and intense (14 milligal), anomaly, that is a standout feature of the entire regional gravity data set. This anomaly occurs within a large dilational setting between the Cobequid, Londonderry and Rockland Brook Faults that is occupied by deformed tectonic slices of Neoproterozoic strata. These strata cannot account for this extremely large and coherent anomaly. A number of Devonian – Carboniferous gabbro intrusives (apophyses) indicate that this anomaly most likely reflects a very large post-orogenic mafic intrusive at depth, a bimodal equivalent of the Devonian-Carboniferous oxidized granites and the likely heat engine for hydrothermal activity in this region. Of greater significance from an exploration perspective are the smaller, discrete anomalies around its margin, largely hidden in the intense gravity gradient caused by NS27. Four Targets, labeled NS27A, B, C and D aligned with and in close proximity to the Londonderry Fault and to historic iron mines (Londonderry Old Mountain, East Mines, Totten Meadow) require further investigation.

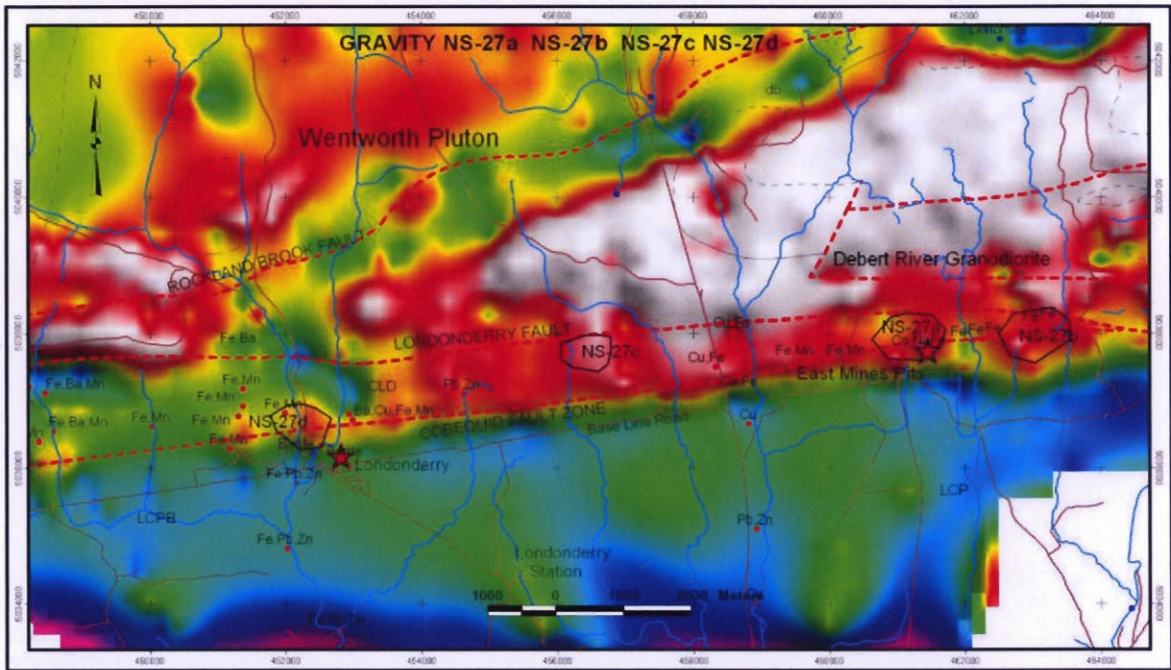
The NS27D Gravity Target occurs just on the south side of the Londonderry Fault, in close proximity to the Old Mountain Iron Mines. The iron workings exploited weathered iron oxides above the water table. The primary iron deposits are largely ankerite –siderite veins and breccias. Specular haematite, magnetite and barite are common and copper is a consistently recorded accessory. One kilometer north of NS27D a large iron-silica body (Derry Hematite) was also mined. Gravity Target NS27D is likely to be a large ankerite-siderite +/- chalcopyrite breccias body. The association of widespread iron-oxides, iron-carbonate, iron-silica, barite and copper with crustal penetrating structures and a large heat engine makes this region a highly significant one for IOCG exploration.

Drill testing NS27D is recommended. Inversion modeling suggests a shallow body from close to ground level to 500 metre depth. An angled drillhole in to the centre of the gravity anomaly is recommended.

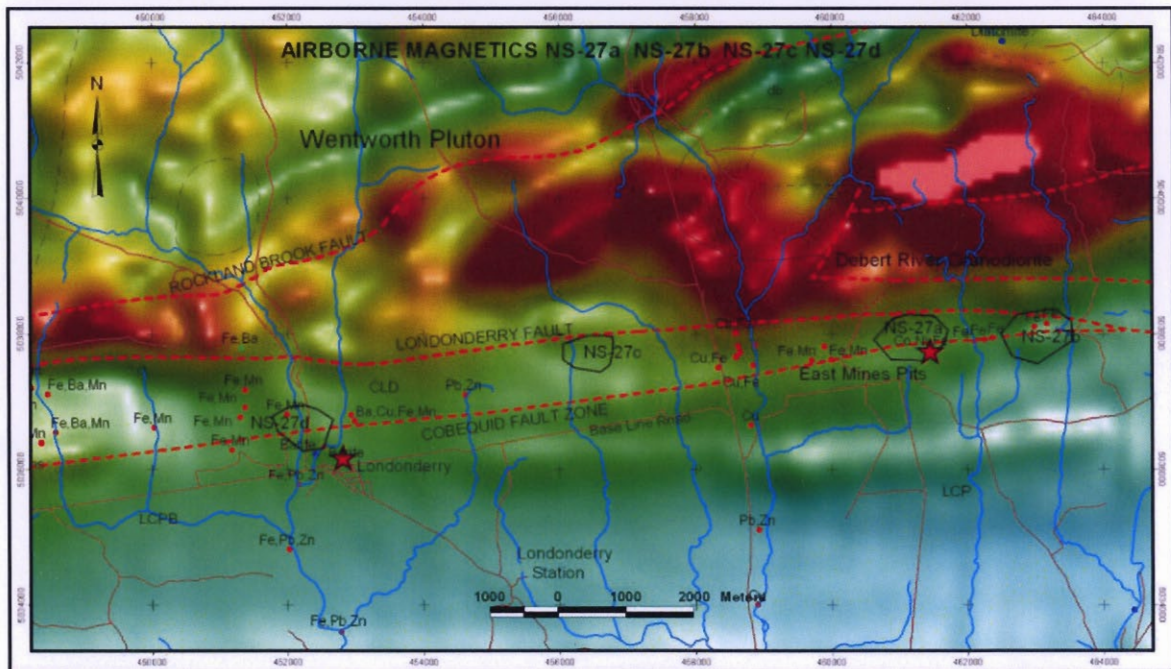
Drill Collar – NS27D

453200E, 5036850N (NAD83, NUTM20).

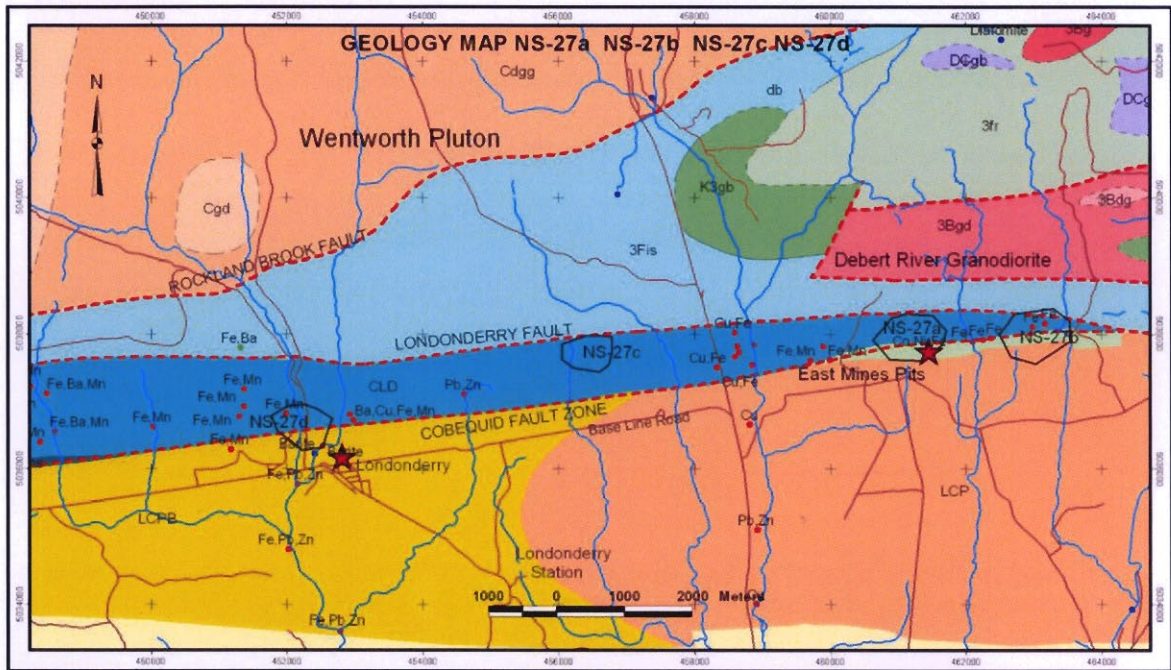
-60 degrees towards 180 degrees T. EOH: 250m.



Regional Gravity – NS27 and NS27A-D



Regional RTP TMI



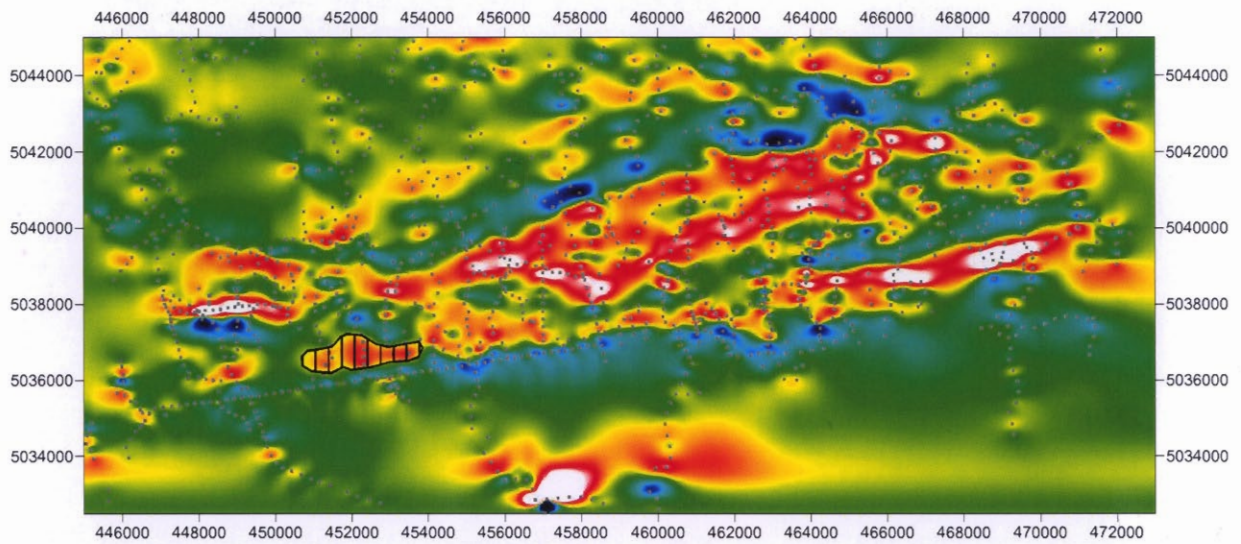
Regional Geology – Pe-Piper and Piper



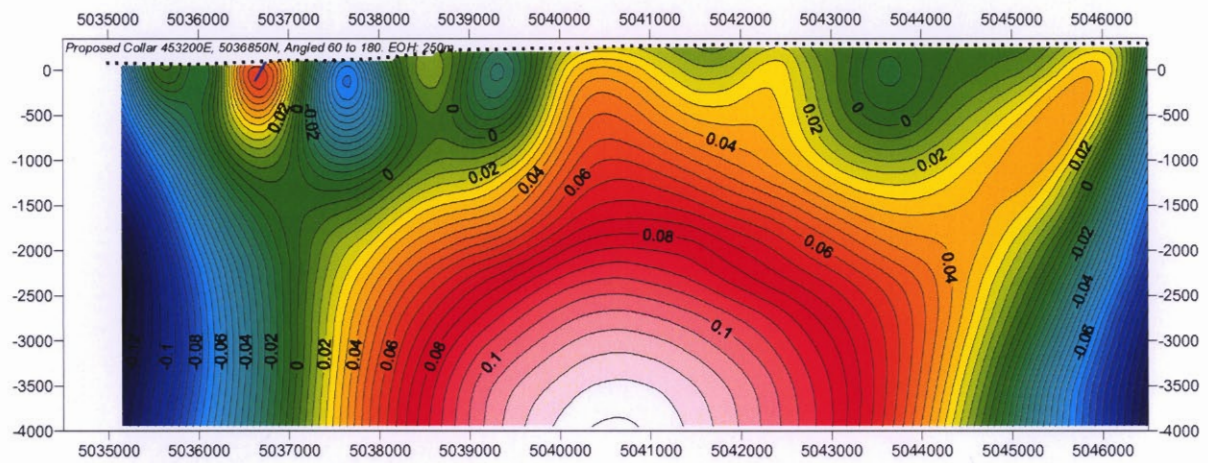
Abundant specular haematite within breccia, Londonderry area

Gravity-Mag 3D Modeling Output for NS27 and NS27D

1^{VD} Gravity NS27-D (highlighted)



Line 452300E



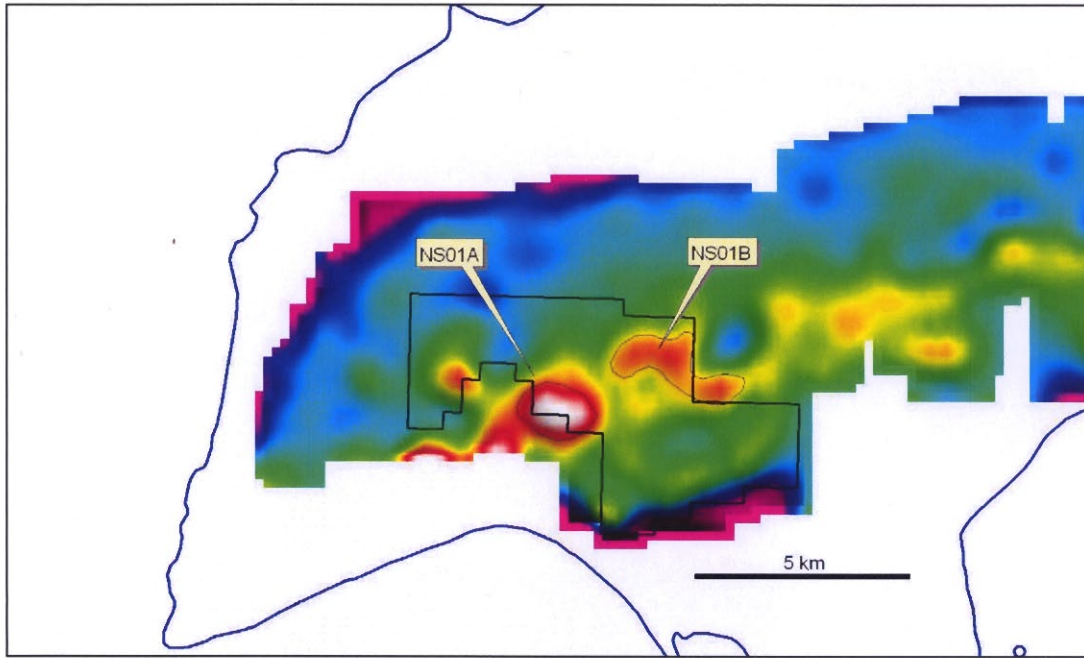
NS27D Drill Collar
453200E, 5036850N (NAD83, NUTM20).
-60 degrees towards 180 degrees T. EOH: 250m.

Priority 7 - Drill Target NS01A, NS01B Far West

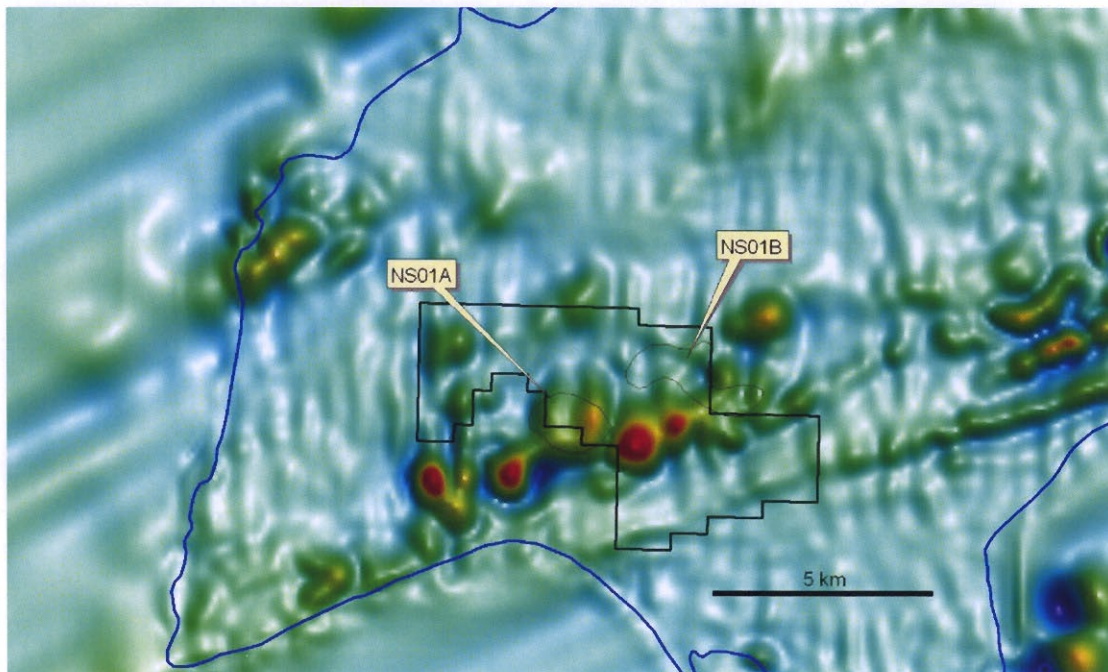
Gravity Target NS01A is located on a major NE-SW crustal structure that was exploited by the Devonian-Carboniferous Cape Chignecto Pluton, a medium grained oxidized granite. The target is a significant discrete residual gravity anomaly of approximately 3.0 milligals amplitude and 1.5 x 1.0 km dimension. There is little to no outcrop over the target and hybrid granite and gabbro with minor haematite alteration and trace sulphides are exposed to the south. Red-brown, strongly sheared and haematite altered polymict conglomerate with 1% chalcopyrite is present along the structure 3km to the northeast of Target 1A. Another target, Gravity Target NS01B is present to the north of this mineralized outcrop. It is in a similar setting to 1A, but is more subtle in amplitude (1.8 mgal).

Inversion modeling of Target 1A gravity data suggests a dense source from 300 to 1200m below ground level. The target lies partly outside a granted tenement and in the Cape Chignecto Provincial Park. A special case can be made to explore in this Park, and a tenement application has been lodged to protect our interests and be activated if required.

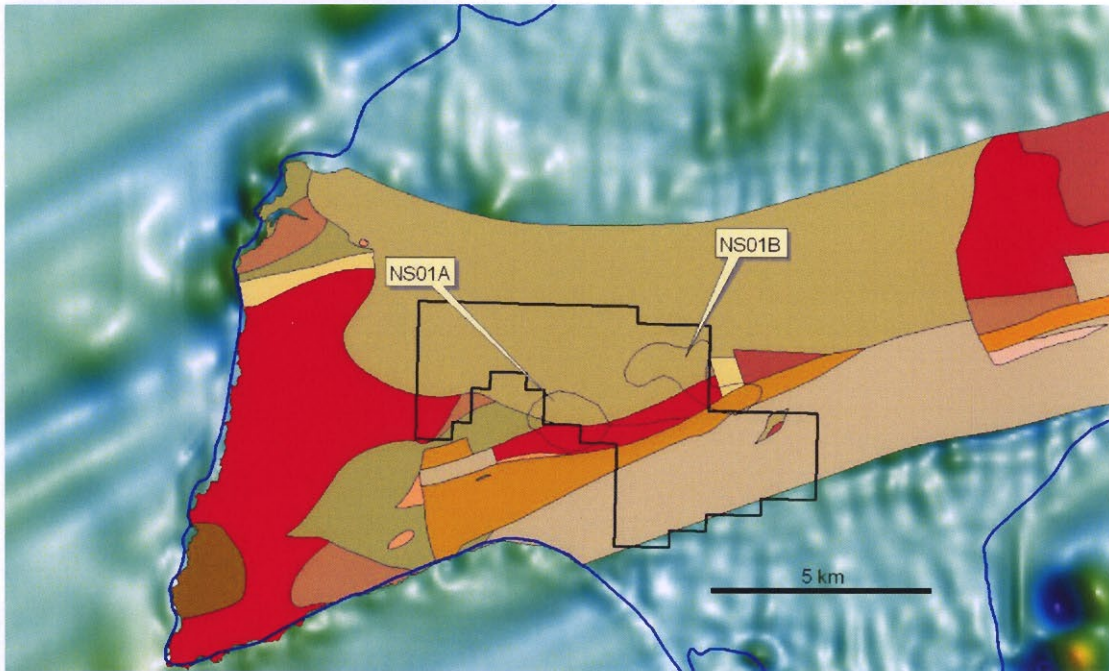
A 500 metre drill hole into Target NS01A collared at 356700E 5026900N (NAD83, NUTM20) and angled 70 degrees towards 180 True is recommended. The dillhole will be wholly within our existing tenement.



IVD Gravity



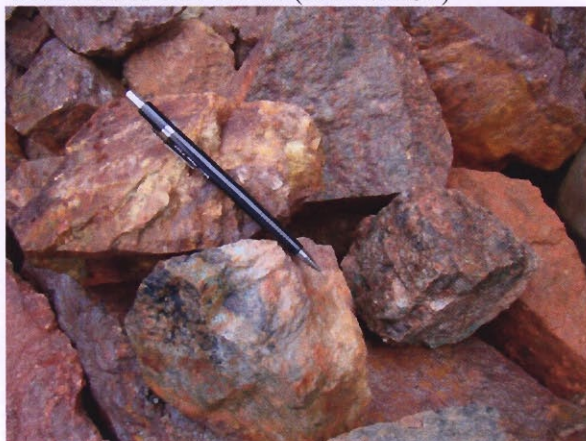
RTP TMI



Geology – Pe-Piper and Piper

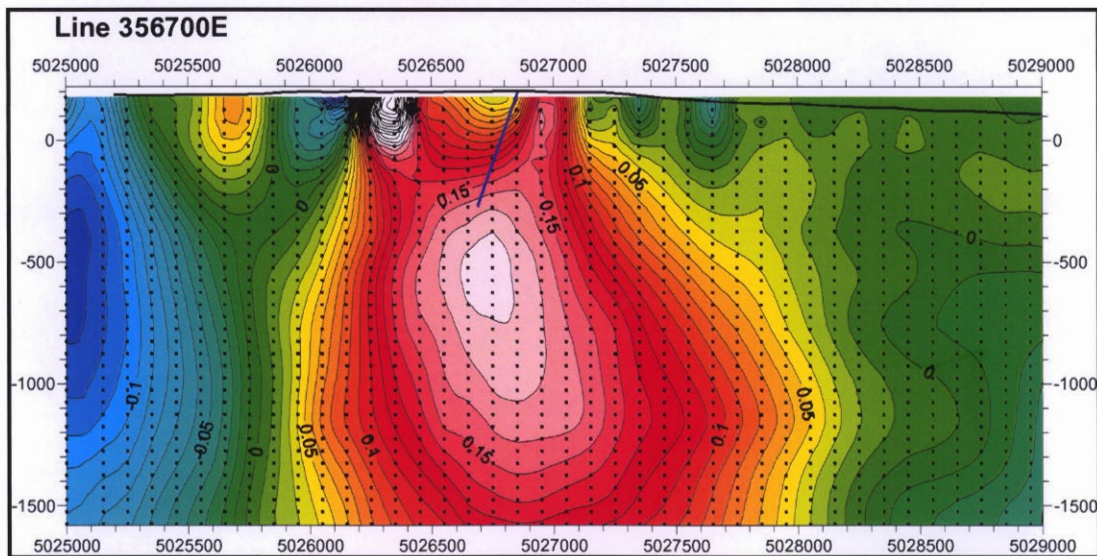
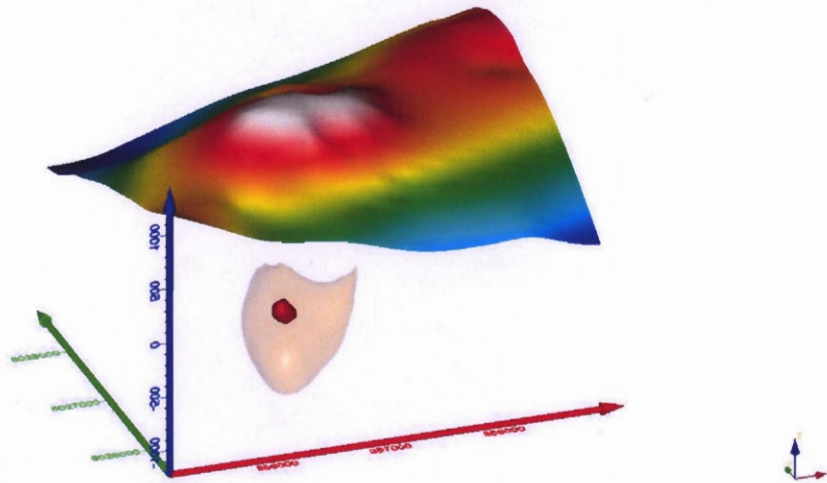
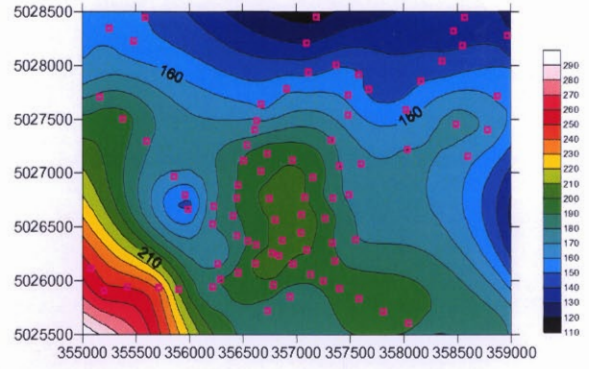
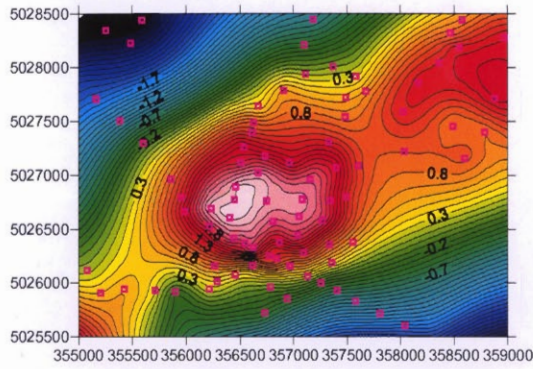


SHEAR ZONE WITH STRONG HEMATITE ALTERATION POLYMYCTIC CONGLOMERATE
WAYPOINT AN-1A-06 (FAR WEST)



MALACHITE STAINING POLYMYCTIC CONGLOMERATE (Note slickensides on boulders)
WAYPOINT AN-1A-06 (FAR WEST)

Gravity-Mag 3D Modeling of NS01A



Drill Collar
 356700E, 5026900N (NAD83, NUTM20).
 -70 degrees towards 180 degrees T. EOH: 500m.

Priority 8 - Drill Target NS08

Gravity Target NS08 is a discrete oval anomaly on the northern faulted margin of the Cobequid-Chidebucto Fault Zone. The gravity target is 2 milligals in amplitude and covers an area of 1 x 0.8 kilometres.

Target NS08 is closely associated with the dilational intersection of the deep seated Spicer Cove and Gilbert Mountain Faults. An oxidized and haematite-altered Devonian-Carboniferous Granite has exploited this structural setting. Target NS08 occurs on the faulted western margin.

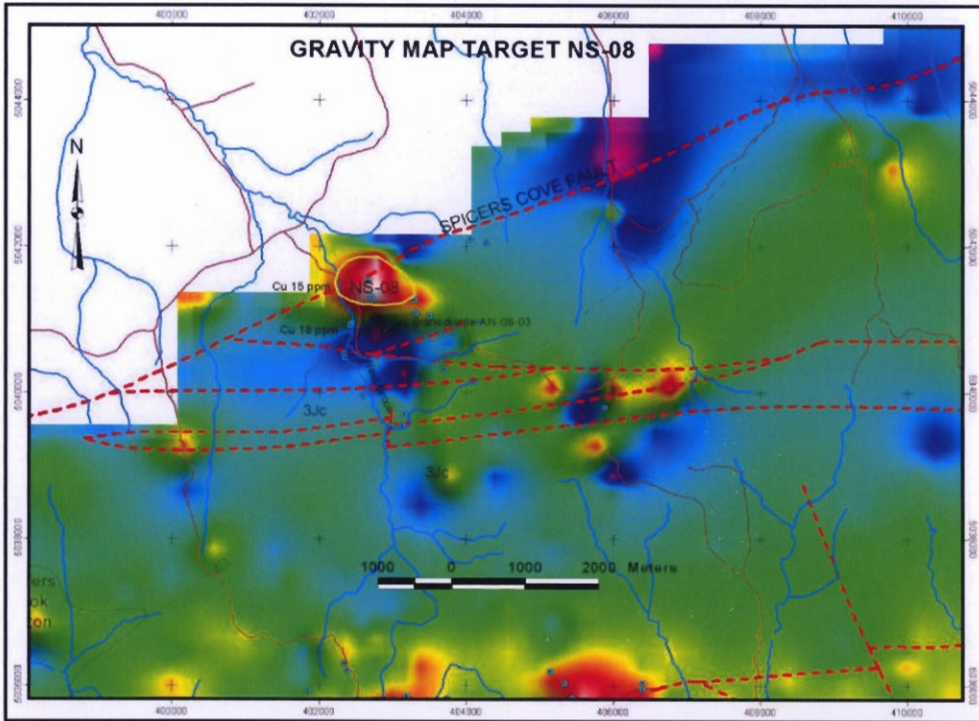
Field inspection reveals no outcrop, the target being mantled by strongly red-brown oxidized soils. An outcrop of sheared magnetic granodiorite with 1-2% pyrite and chalcopyrite plus occurs 400 metres to the south. Two stream sediment copper anomalies occur in West Brook

Inversion modeling of Target NS08 gravity data suggests a dense and coincident moderately magnetic body close to the surface. A drill hole is recommended through the densest part.

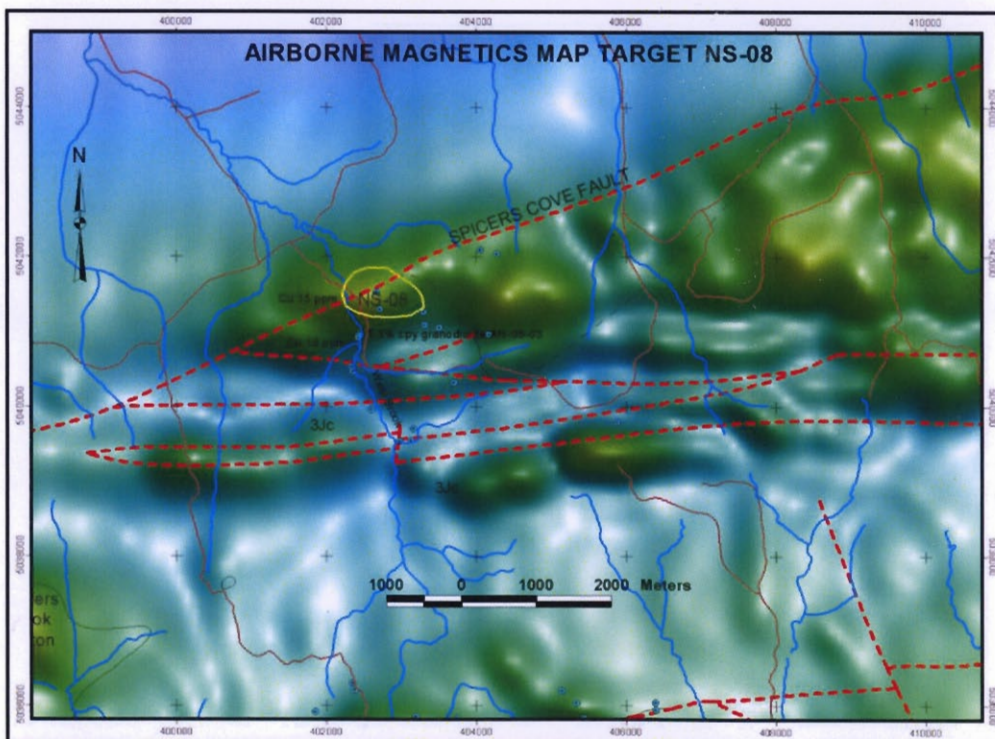
Drill Collar

402675E 5041340N (NAD83 NUTM 20)

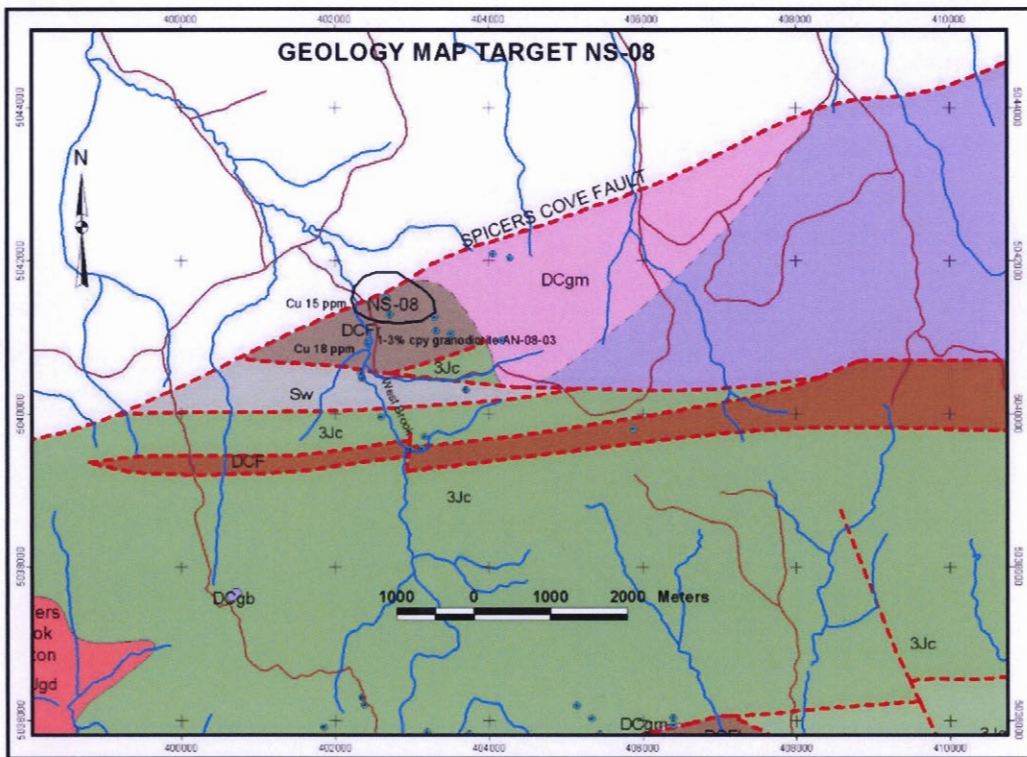
-60 degrees towards 180 T. EOH 200.



NS08 1VD Gravity



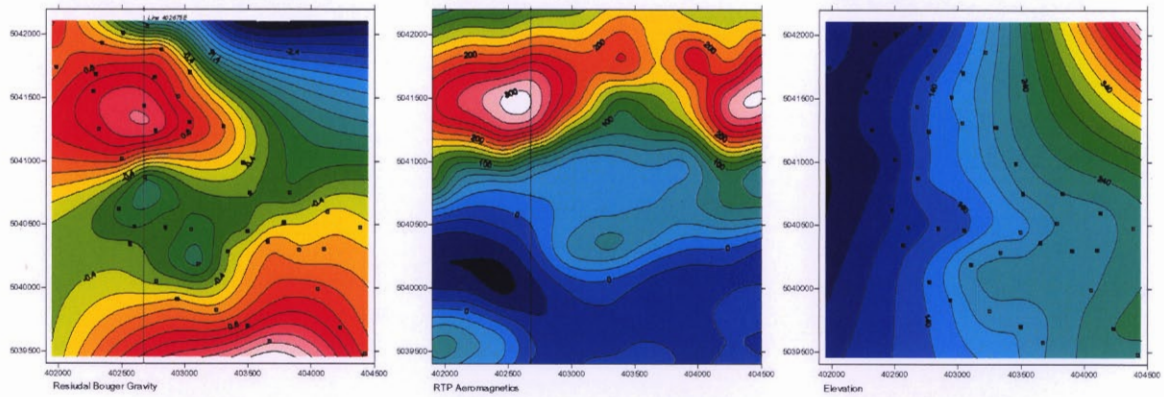
NS08 RTP TMI



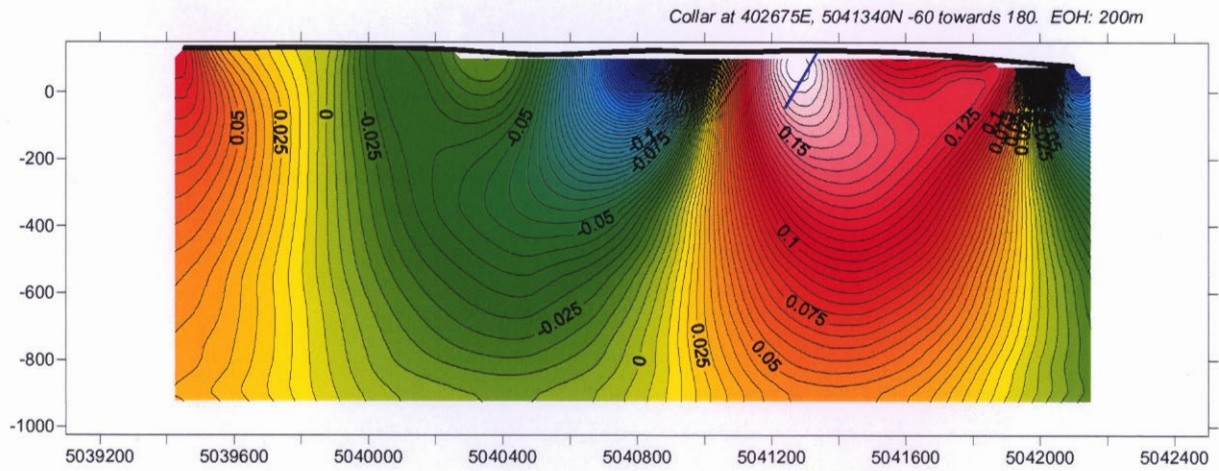
NS08 Geology Pe-Piper & Piper

Gravity-Mag 3D Modeling – NS08

NS08 Area



Line 402675E



Priority 9 - Drill Target NS23 West

Gravity Target NS23West is a complex feature lying on the faulted southern margin of the oxidized Late Devonian-Early Carboniferous Pleasant Hills Pluton. It occurs just east of the apex of three major faults that radiate eastwards at low angles to each other, the Cobequid, Londonderry and Rockland Faults. The gravity target is 1.7 milligals in amplitude and covers an area of 2.2 x 0.7 kilometres.

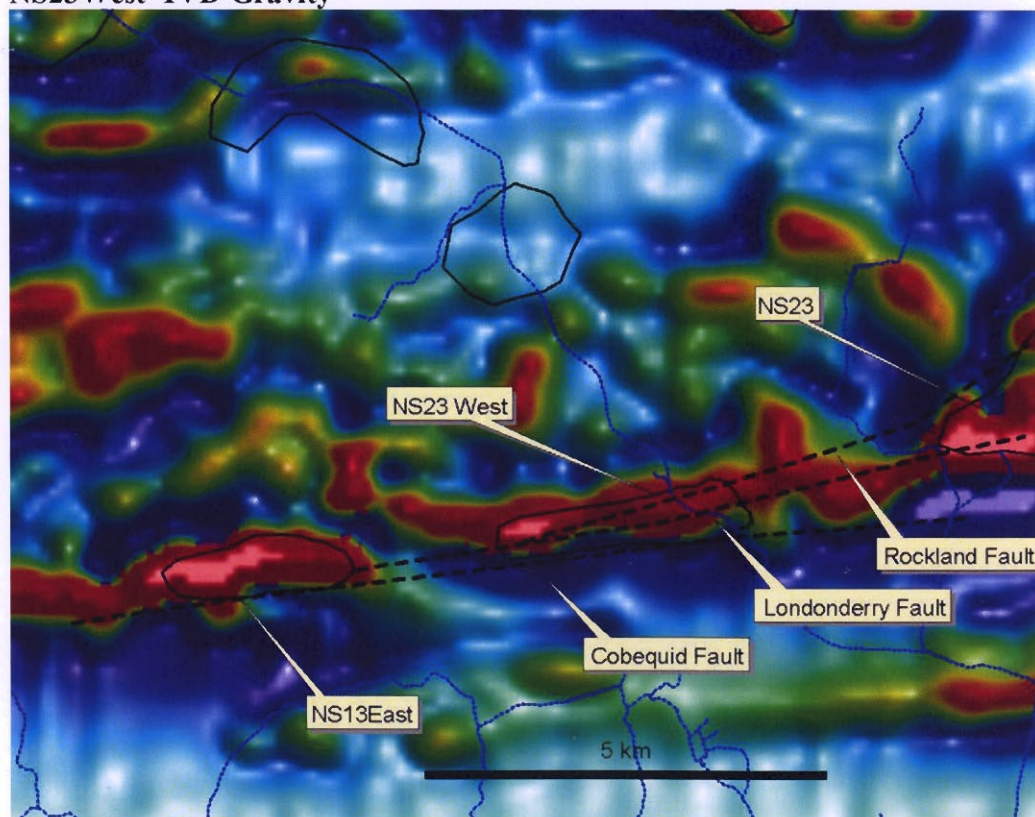
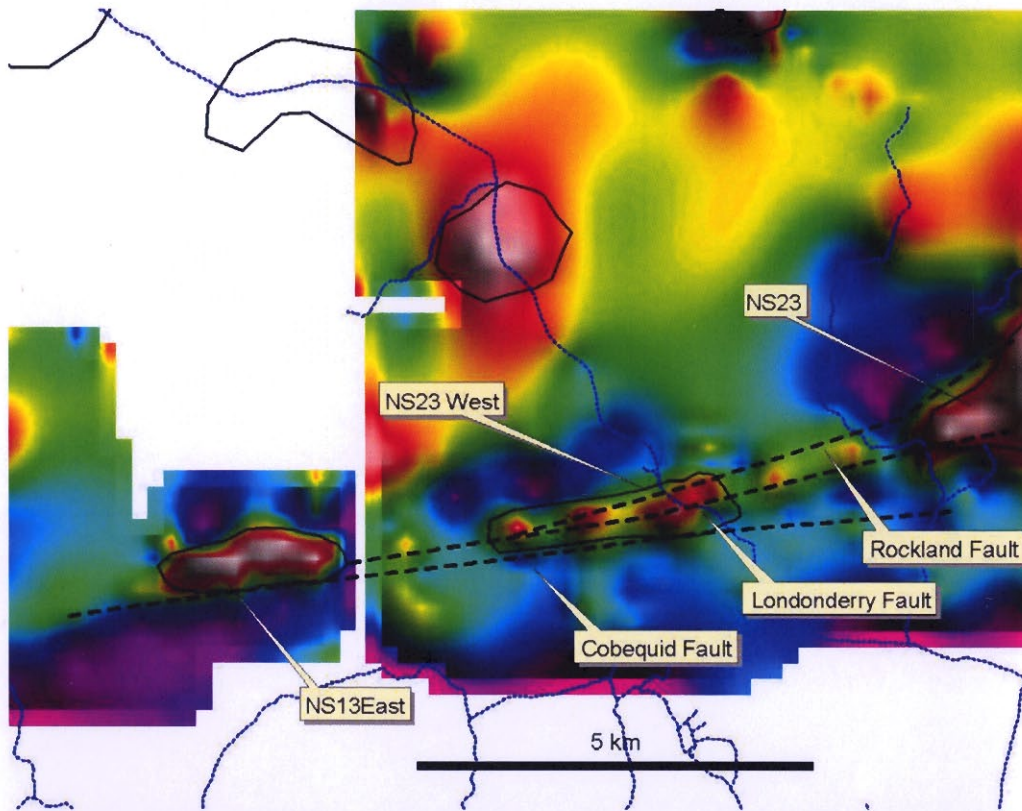
Target NS23West is similar to NS13 East in that it is closely associated with the margin of an oxidized and haematite-altered granite, the deep seated Cobequid Fault array, an intense magnetic linear along the fault, and isolated outcrops of sulphide-bearing magnetite breccias. Target NS23West, however, is bipolar in that its western part is more intensely magnetic and less dense, whilst its eastern part is denser and less magnetic. A magnetite breccia composed of massive magnetite with angular sulphide clasts outcrops at the eastern end of the target.

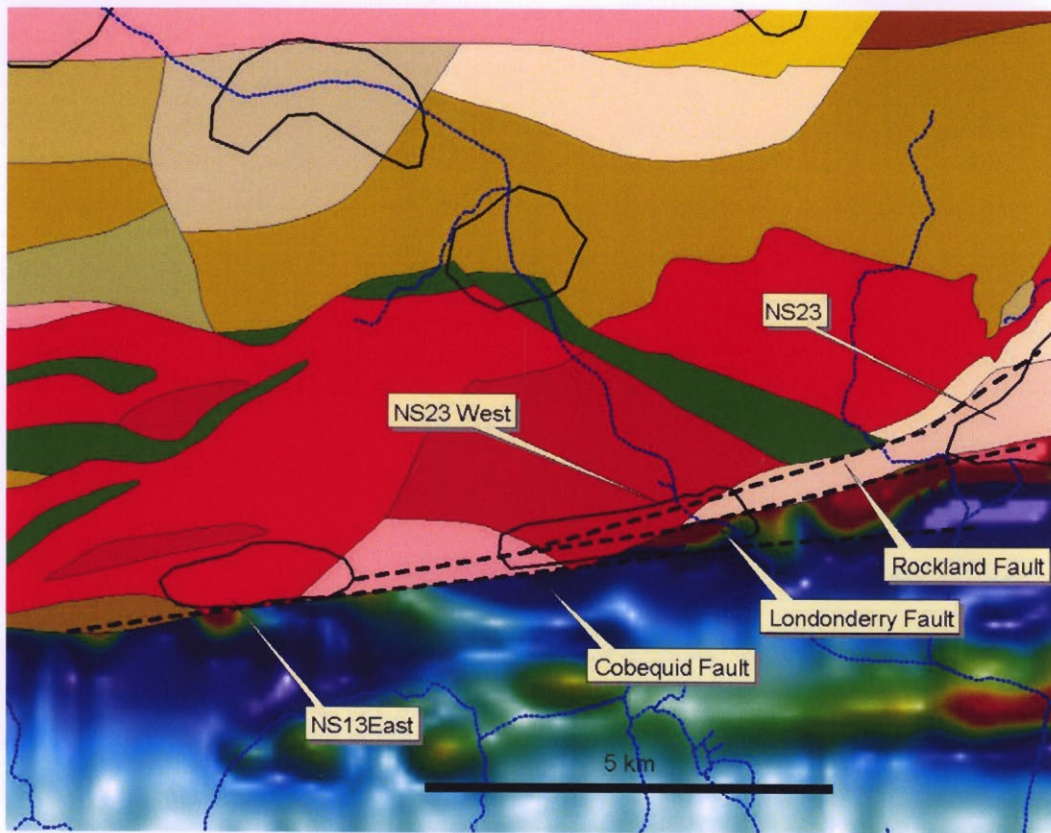
Inversion modeling of Target NS23West gravity data suggests a dense linear body coming close to ground level at its eastern end and plunging deeper to the west. The body is sited within a steeply south dipping fault corridor and immediately south of a low density (granite) body. A 400m drillhole at this eastern end and centered on the highest gravity anomalism is recommended.

A Drill Collar from the south side of the target has been selected based so as to intersect the centre of the combined gravity-magnetic feature;

435125E, 5033950N (NAD83, NUTM20).

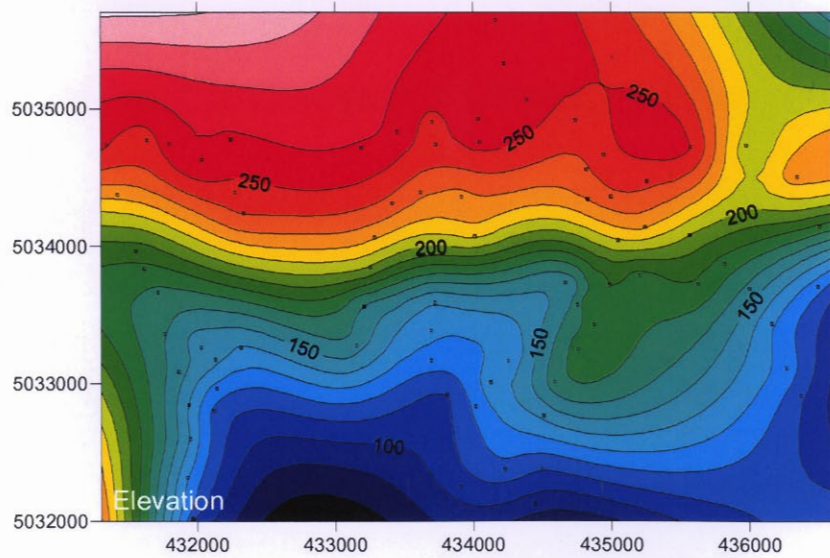
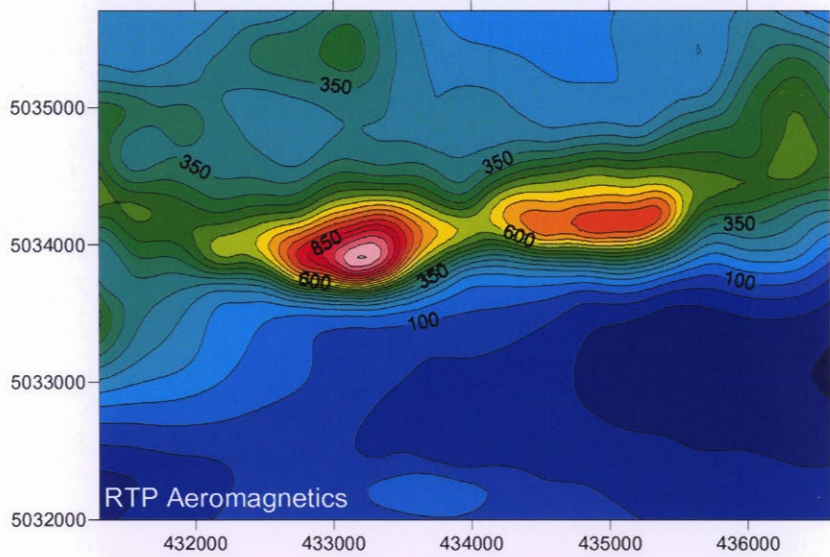
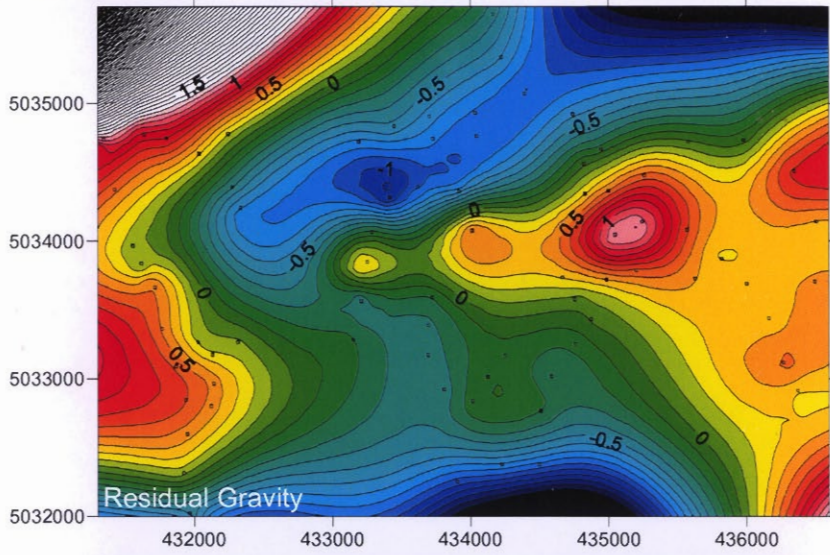
-70 degrees towards 000 degrees T. EOH: 400m



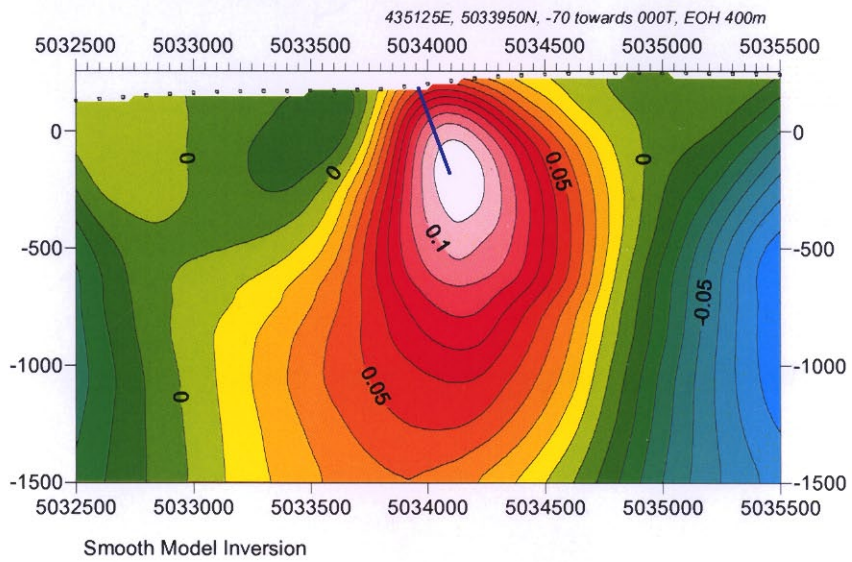
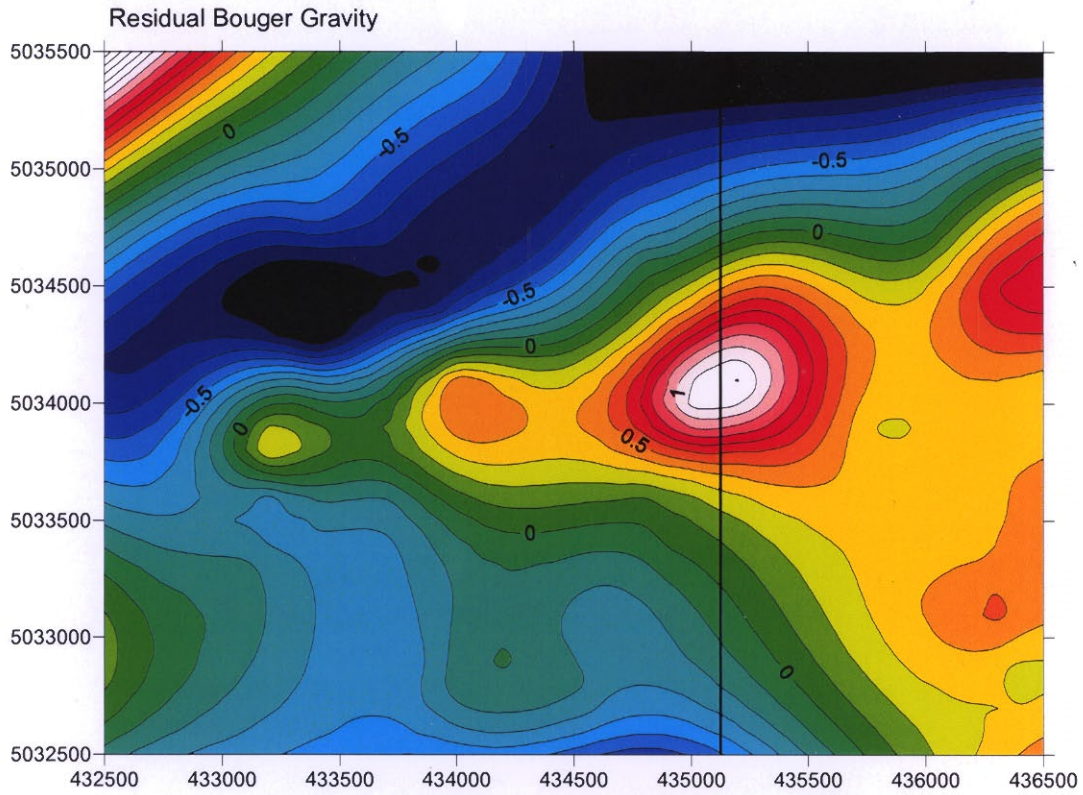


NS23West Geology Pe-Piper & Piper

Gravity-Mag 3D Modeling – NS23West



NS23W Area



Drill Collar 435125E, 5033950N, -70 towards 000T. EOH 400m

Priority 10, 11, 12 - Drill Targets NS27 A, B, C

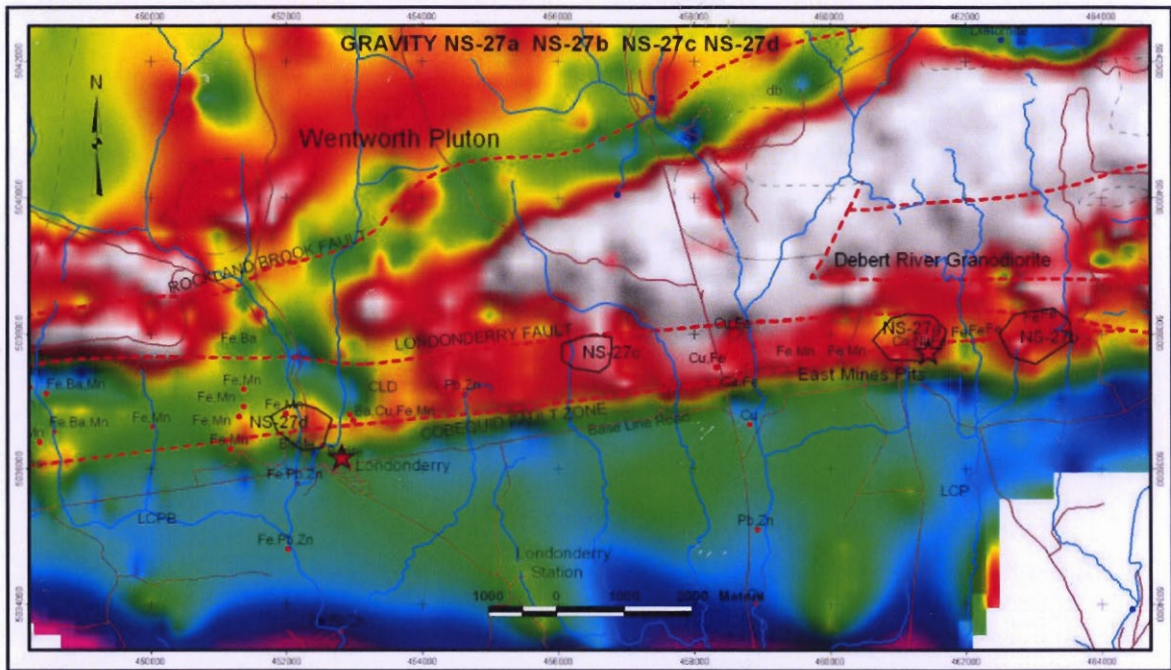
Gravity Anomaly NS27 is an extremely large (12 x 4 km), deep and intense (14 milligal), anomaly, that is a standout feature of the entire regional gravity data set. This anomaly occurs within a large dilational setting between the Cobequid, Londonderry and Rockland Brook Faults that is occupied by deformed tectonic slices of Neoproterozoic strata. These strata cannot account for this extremely large and coherent anomaly. A number of Devonian – Carboniferous gabbro intrusives (apophyses) indicate that this anomaly most likely reflects a very large post-orogenic mafic intrusive at depth, a bimodal equivalent of the Devonian-Carboniferous oxidized granites and the likely heat engine for hydrothermal activity in this region. Of greater significance from an exploration perspective are the smaller, discrete anomalies around its margin, largely hidden in the intense gravity gradient caused by NS27. Four Targets, labeled NS27A, B, C and D in close proximity to the Londonderry Fault and to historic iron mines (Londonderry Old Mountain, East Mines, Totten Meadow) warrant further investigation.

Because of the intense gravity gradient associated with the larger NS27 body, each of NS27A,B,C required further gravity data collection to allow more precise modeling. Target NS27D has been modeled to illustrate the potential of these subtle targets as described previously as Priority 6 Target.

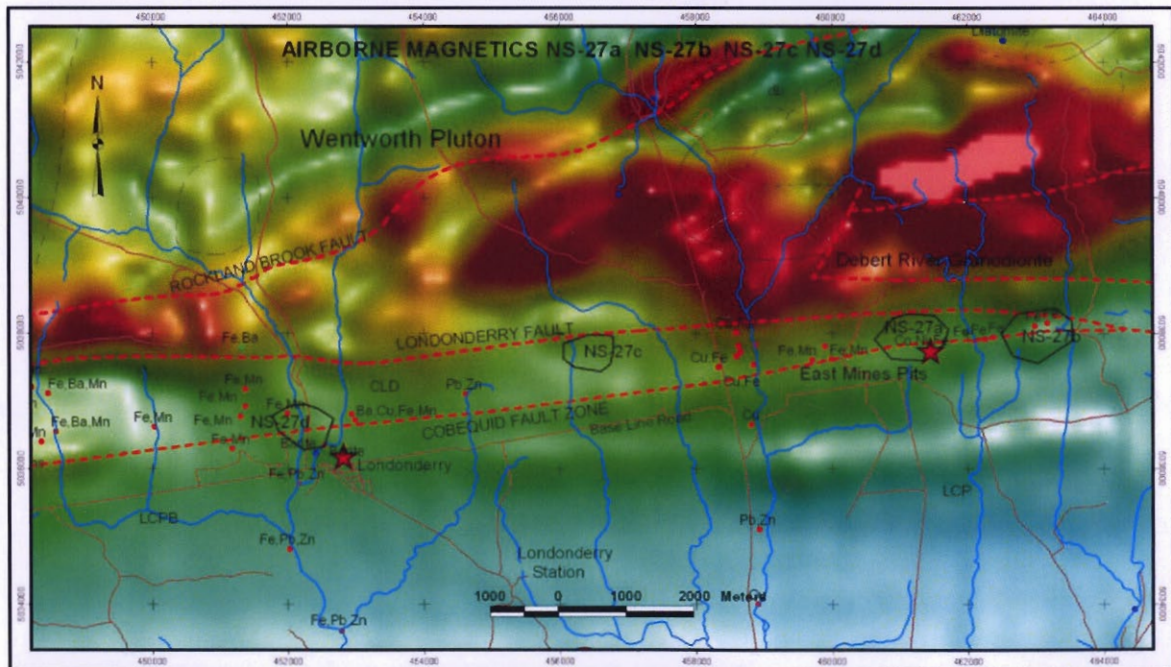
The NS27D target is associated with the Old Mountain Iron Mines workings. The iron workings exploited weathered iron oxides above the water table. The primary iron deposits are largely ankerite –siderite veins and breccias. Specular haematite, magnetite, barite and iron-silica are common and copper is a common recorded accessory. Similarly, Target NS27A is closely associated with the East Mines iron workings where ankerite-siderite-haematite breccias anomalous in copper and gold are exposed. Target NS27B is associated with the Totten Meadow iron-barite workings.

The association of widespread veins and breccias of iron-oxide, iron-carbonate, iron-silica, barite with anomalous copper, crustal penetrating structures and a large heat engine makes this region a highly significant one for IOCG exploration.

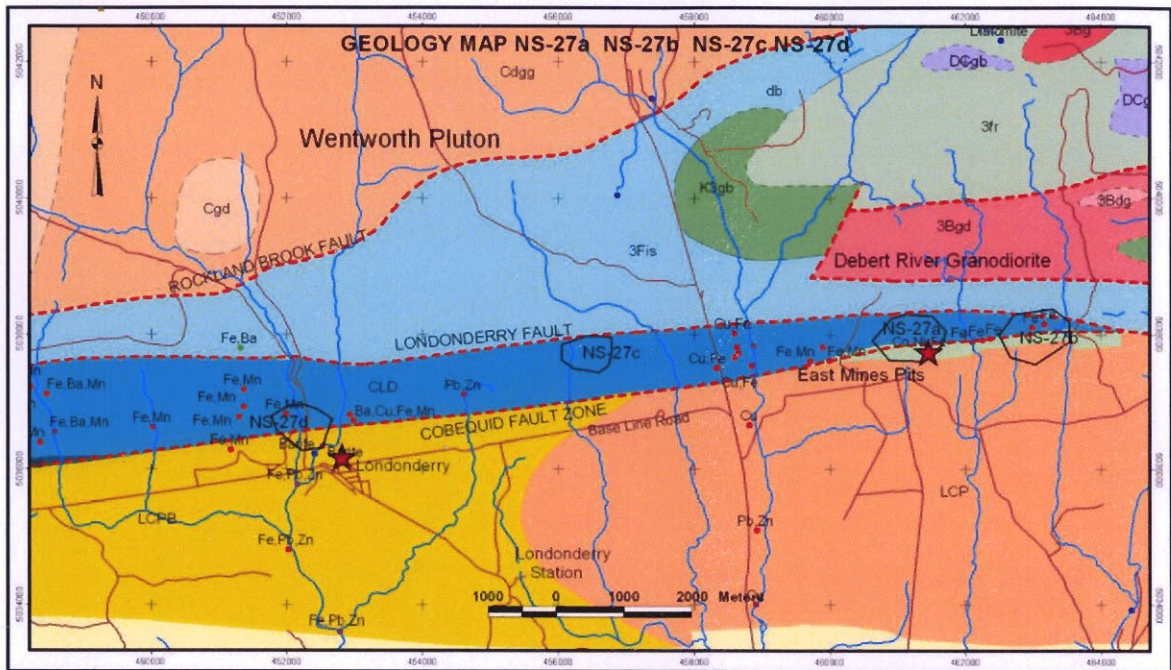
Gravity inversion modelling on each of targets NS27A,B,C is currently underway to refine and assist drill collar optimization. A 250 metre deep drillhole in to each is anticipated.



Regional Gravity – The large NS27 anomaly and residual targets NS27A-D



Regional RTP TMI



Regional Geology – Pe-Piper and Piper