

LEGEND

- Cretaceous**
- 11 Clays, silica sand and lignite
- Triassic-Jurassic** includes Fundy Group
- 10 Mafic volcanic rocks
 - 9 Shale, siltstone and sandstone
- Late Carboniferous** includes Canso, Riversdale, Cumberland, Pictou, Stellarton and Morien Groups
- 8 Mixed sandstone to shale sequences
- Early Visean** includes Windsor Group
- 7 Siltstone, mudstone, shale, sandstone, conglomerate, gypsum, anhydrite, halite, limestone and dolomite
- Early Carboniferous** includes Horton Group and Grantmire Formation
- 6 Conglomerate, sandstone, siltstone and volcanic rocks
- Devono-Carboniferous** includes Fountain Lake Group and Grenville River, Rapid Brook, Nuttby Falls, Murphy Brook, McAdam Lake and Fisset Brook Formations
- 5 Conglomerate, sandstone, siltstone and volcanic rocks
- Siluro-Devonian** includes Arisaig Group and New Canaan, Kentville, White Rock, Portapique River, Wilson Brook, Knoydart, Earltown, Bear Brook, McGillivray Brook and Dunn Point Formations
- 4 Siltstone, shale, sandstone and volcanic rocks and their metamorphic equivalents
- Cambro-Ordovician** includes Meguma, Iron Brook, McDonald Brook, Bourinot and Kelvin Glen Groups
- 3 Shale, siltstone, sandstone, conglomerate and volcanic rocks and their metamorphic equivalents
- Hadrynian** includes George River, Fourchu and Georgeville Groups, and rocks of Mount Thom Complex
- 2 Shale, siltstone, sandstone, conglomerate, limestone, dolomite and volcanic rocks and their metamorphic equivalents
- 1 Intrusive Complexes

REFERENCE LIST

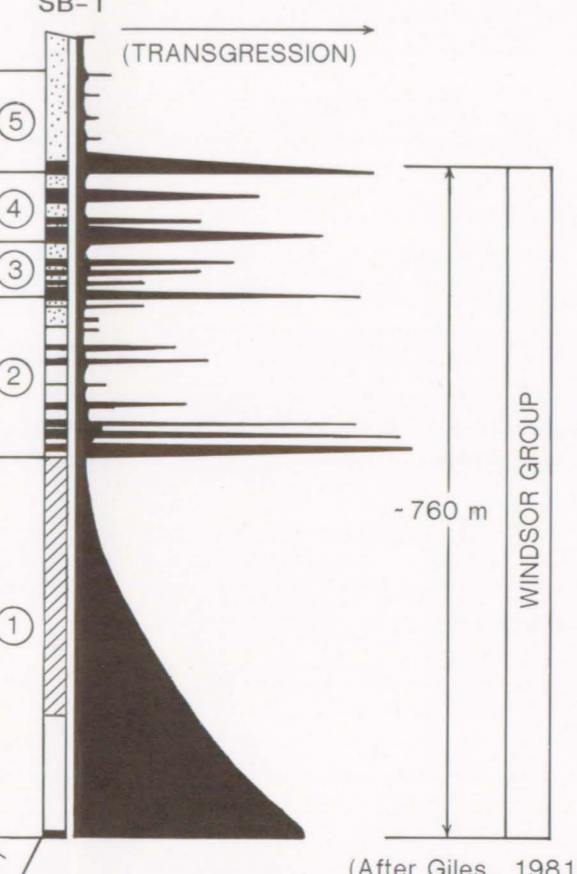
- | | | | |
|-----------------------------------|-------------------------|------------------------------|-------------------------|
| ANTIGONISH COUNTY | 0170 ROSLIN | 0063 HAYES CAVE | 0068 PORTREE |
| 0093 MONKS HEAD | 0171 BECKWITH | 0064 NORTHFIELD | 0069 KINGROSS |
| 0094 SOUTHSIDE ANTIGONISH HARBOUR | 0172 PUROY BROOK | 0065 UNACKE BROOK | 0070 MARGAREE CENTRE |
| 0095 WILLIAMS POINT | 0173 HANSDERS | 0066 TITLER BROOK | 0071 GRAND ETANG |
| 0096 POMQUET HARBOUR | 0174 OXFORD | 0136 ELMSDALE | 0080 PORT HOOD ISLAND |
| 0097 POMQUET RIVER | 0175 SPRINGHILL | 0137 HORNE SETTLEMENT | 0091 GLEN BROOK |
| 0098 BEECH HILL | 0176 LOWER MACCAN | 0138 TULLOCK BROOK | 0092 PAST HASTINGS |
| 0099 ASHDALE | 0177 NARRAN | 0139 NINE MILE RIVER | |
| 0100 ADDINGTON FORKS | | 0140 HARDWOOD LANDS | |
| 0101 BRIERLY BROOK | GUYSBOROUGH COUNTY | 0141 SHUBENACADIE | PICTOU COUNTY |
| 0102 SYLVAN VALLEY | 0110 MULGRAVE | 0142 MACPHEES CORNER | 0111 BRIDGEVILLE |
| 0103 RIGHTS RIVER | HALIFAX COUNTY | 0143 NORTH SALEM | 0112 FORBES LAKE |
| 0104 CRYSTAL CLIFFS | 0119 GLENMORE | 0144 ADMIRAL ROCK | 0113 LORNE |
| 0105 HARBOUR CENTRE | 0125 ANNAND BROOK | 0145 URBANA | 0114 LIMEROCK |
| 0106 LANARK | 0126 ANTRIM | 0146 SOUTH MATLAND | |
| 0107 BIG MARSH | 0127 COOKS BROOK | 0178 NOEL LAKE | RICHMOND COUNTY |
| 0108 MONASTERY | 0128 CHASWOOD | 0179 WALTON | 0004 HAY COVE |
| 0109 OHIO | 0129 BLACK BROOK | 0180 FEMERROKE | 0010 LENOX |
| | 0130 MIDDLE MUSQUODOBOT | 0181 WALTON RIVER | 0011 DOREYS POINT |
| CAPE BRETON COUNTY | 0131 ELDERBANK | 0182 WENTWORTH CREEK | 0014 DUNDEE |
| 0001 MEADOWS ROAD | 0132 LAKE EGMONT | 0183 MILLER CREEK | 0030 LIZZIES LAKE |
| 0003 SAUNDERS COVE | 0133 CARROLLS CORNER | 0184 STANLEY | 0042 PORT RICHMOND |
| 0028 LEITCHES CREEK | 0134 EAST MILFORD | 0185 STIRLING BROOK | |
| 0029 REAR BALLS CREEK | 0135 DUTCH SETTLEMENT | | VICTORIA COUNTY |
| | 0159 ELMSVALE | INVERNESS COUNTY | 0002 BOULARDERIE CENTRE |
| COLCHESTER COUNTY | 0160 DEDICATION LAKE | 0012 LITTLE JUDDIQUE HARBOUR | 0048 DINGWALL |
| 0116 EASTVILLE | 0161 UPPER MUSQUODOBOT | 0013 GLENVIEW STATION | 0049 KELLYS COVE |
| 0117 NEWTON MILLS | 0162 BROOKVALE | 0015 HAYS RIVER | 0050 ISLAND POINT |
| 0118 STEWACKE | 0163 MURCHYVILLE | 0016 MACINTYRE LAKE | 0072 FORKS BADDECK |
| 0120 BRENTWOOD | 0165 WYSES CORNER | 0017 FINLAY POINT | 0073 PETERS BROOK |
| 0121 BROOKFIELD | | 0018 WEST MABOU HARBOUR | 0074 MIDDLE RIVER |
| 0122 LANESVILLE | HANTS COUNTY | 0019 UPPER MARGAREE | 0075 NORTH SHORE |
| 0123 PINE GROVE | 0005 MOUNT DENSON | 0020 MABOU STATION | 0076 NORTH SHORE |
| 0124 COLSTREAM | 0006 WINDSOR | 0021 GREEN POINT | 0077 ST. ANNS HARBOUR |
| 0147 PRINCEPORT | 0007 UPPER PALMOUTH | 0022 SOUTHWEST MABOU | 0078 BIG HILL |
| 0148 BEAVER BROOK | 0008 WARTOOK | 0023 MARGAREE FORKS | 0079 HUNTERS MOUNTAIN |
| 0149 HILDEN | 0009 THREE MILE PLAINS | 0031 ALBA | 0080 WASHABUCK BRIDGE |
| 0150 PLEASANT VALLEY | 0024 GYPSUM MINES | 0032 STONEY POINT | 0081 LOWER WASHABUCK |
| 0151 UPPER BROOKFIELD | 0025 ST. CROIX | 0033 ORANGEDALE | 0082 FORT POINT |
| 0152 MIDDLE STEWACKE | 0026 WOODVILLE | 0034 MACLEANS COVE | 0083 OTTAWA BROOK |
| 0153 CAMDEN ROAD | 0027 MANTUA | 0035 MALAGAWATCH | 0084 IONA |
| 0154 SMITHFIELD | 0051 CHEVERIE | 0036 UPPER RIVER DENYS | 0085 JAMESVILLE |
| 0155 OTTER BROOK | 0052 KEMPT SHORE | 0037 MELFORD | 0086 JUBILEE |
| 0156 STEWACKE CROSS ROADS | 0053 SUMMERVILLE | 0038 RIVER DENYS | 0087 LITTLE NARROWS |
| 0157 MEADOWVALE | 0054 LOWER BURLINGTON | 0041 SUGAR CAMP | 0088 FRENCH RIVER |
| 0158 SOUTH BRANCH | 0055 LATTIES BROOK | 0043 RIVER CENTRE | 0089 QUARRY ST. ANNS |
| | 0056 MCKAY SECTION | 0044 MABOU HARBOUR MOUTH | 0186 LONG HILL |
| CUMBERLAND COUNTY | 0057 MANTUA | 0045 MARGAREE HARBOUR | |
| 0166 MALAGASH | 0058 AVONDALE | 0046 BROAD COVE | |
| 0167 LAZY BAY | 0059 FALMOUTH | 0047 CHEVICAMP | |
| 0168 RUGWASH | 0060 TENNYCAPE | 0067 CAPTAINS BROOK | |
| 0169 CANFIELDS CREEK | 0061 GLEN BROOK | | |
| | 0062 RIVERSIDE CORNER | | |

- STRUCTURAL ELEMENTS**
- Unconformity
 - Normal fault
 - Reverse fault
 - Thrust fault
 - Wrench fault
 - Fault

- Occurrence**
- 0198 Deposit
 - 0197 Reference Number

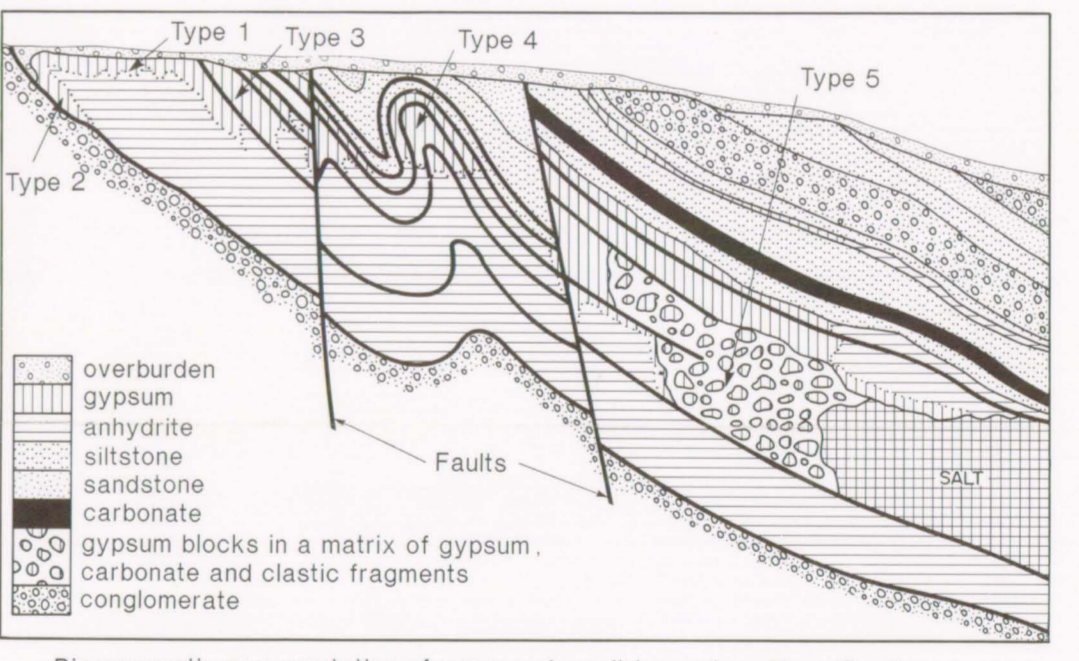
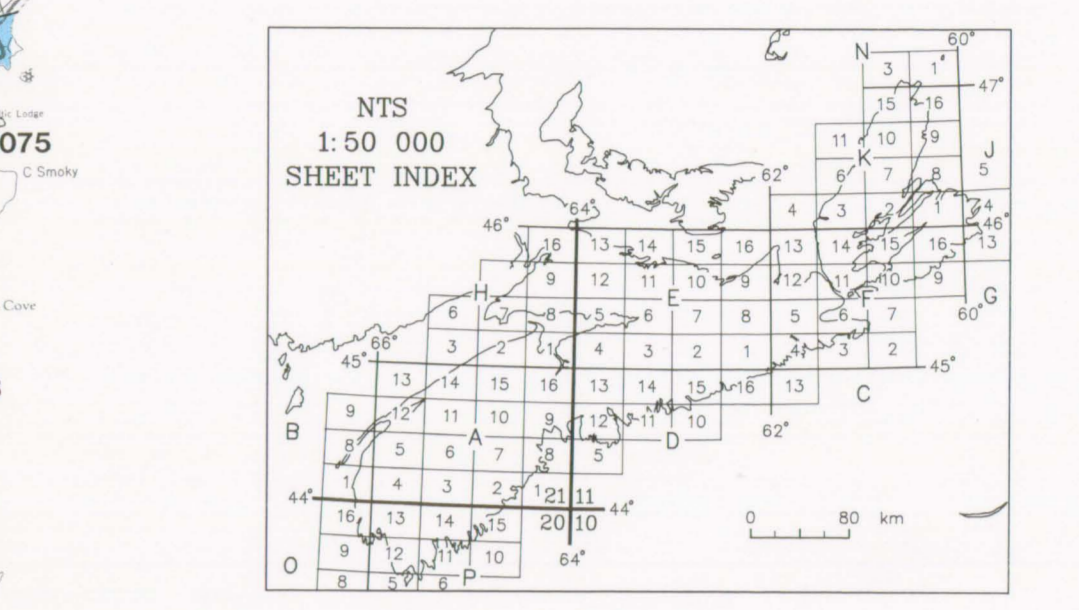
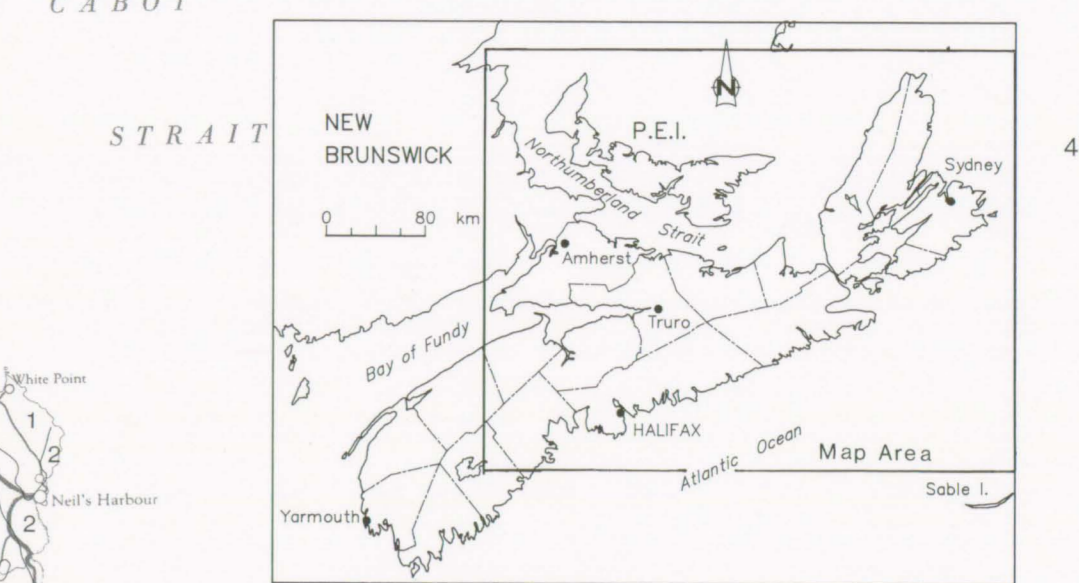
MAP NOTES

Planimetric base derived from Canada Department of Energy, Mines and Resources, Surveys and Mapping Branch Map MCR 37, Scale 1:500 000
 Geological base modified from the Geological Map of Nova Scotia (Keppie, 1979)
 Legend adapted from the Metallogenic Map of Nova Scotia (Chatterjee, 1983)
 Transverse Mercator Projection
 Thematic Cartography by Cartographic Services, Nova Scotia Department of Natural Resources



Producing Deposits

- Miller Creek Deposit, Fundy Gypsum Company Ltd. (0183)
- Little Narrows Deposit, Little Narrows Gypsum Company Ltd. (0087)
- East Milford Deposit, National Gypsum (Canada) Ltd. (0134)
- Big Brook Deposit, Georgia-Pacific Corporation (0039)
- Sugar Camp Deposit, Georgia-Pacific Corporation (0041)
- Wentworth Deposit, Fundy Gypsum Company Ltd. (0182)
- McKay Section Deposit, Domtar Gypsum (0056)



Diagrammatic representation of gypsum deposit types (see Nova Scotia Department of Natural Resources, Economic Geology Series 91-1, Chapter 1 for an explanation of deposit types 1-5).

Nova Scotia Department of Natural Resources
 Map 91-1
GYPSUM AND ANHYDRITE RESOURCES IN NOVA SCOTIA
 Compiled by G. C. Adams
 Scale 1:500 000

Nova Scotia Department of Natural Resources
 Honourable C. W. MacNeil, M.D., Minister
 Halifax, Nova Scotia
 1991