

## **APPENDIX E**

### **PHOTOGRAPHS - No. 2 SHAFT**





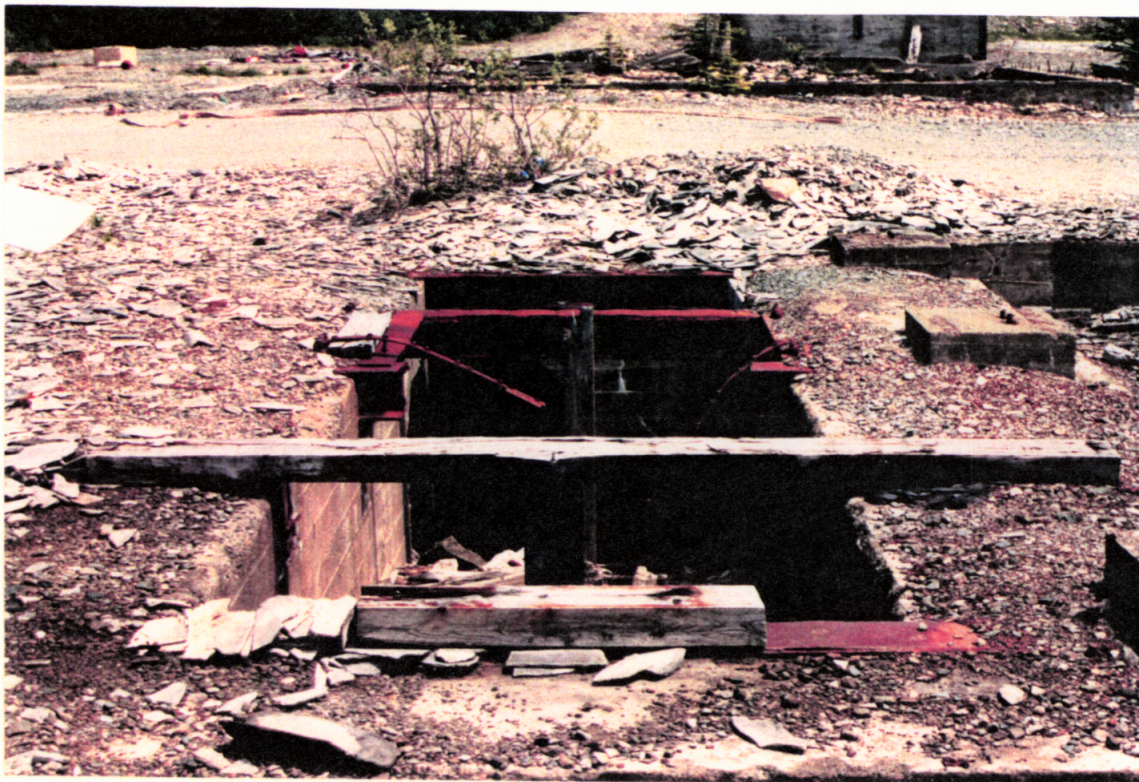


PHOTO E-1: No. 2 Shaft collar prior to removal of timber and debris.



PHOTO E-2: Shop fabrication of steel grate for No. 2 Shaft closure.

PROJECT NO. 10903







PHOTO NO. E-3: Unloading steel grating from flatbed.

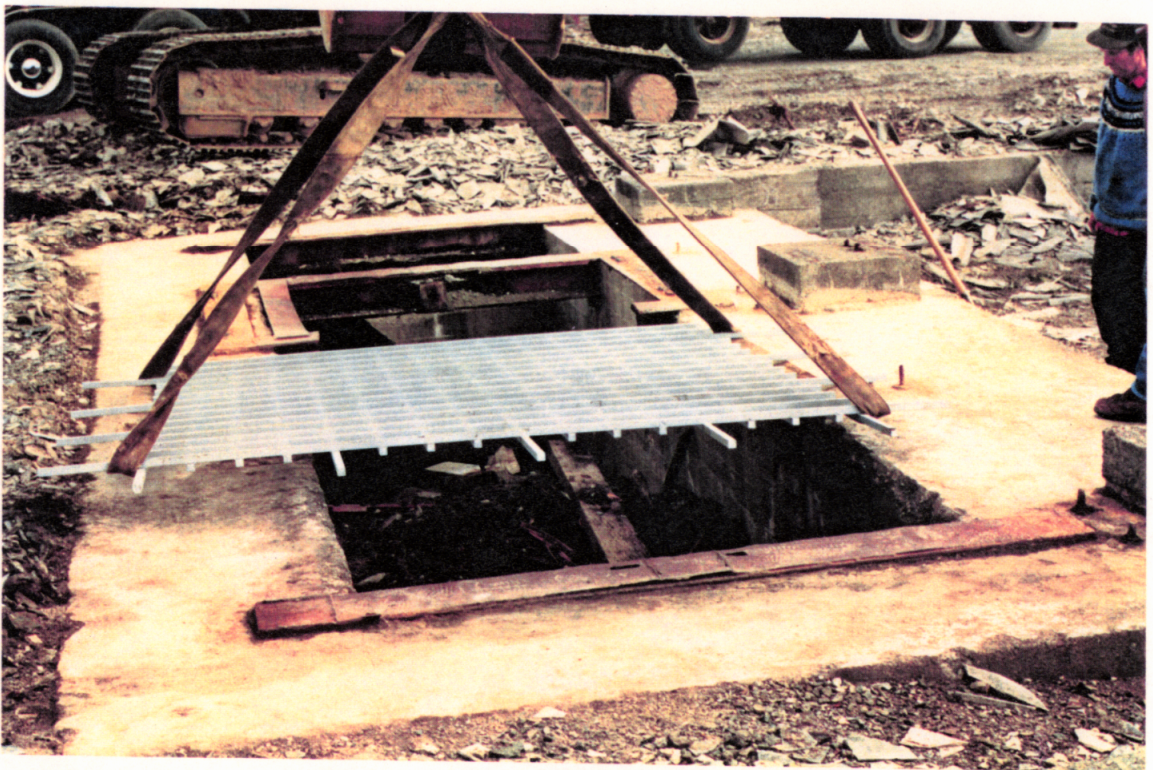


PHOTO NO. E-4: Positioning steel grating on No. 2 Shaft collar.

PROJECT NO. 10903





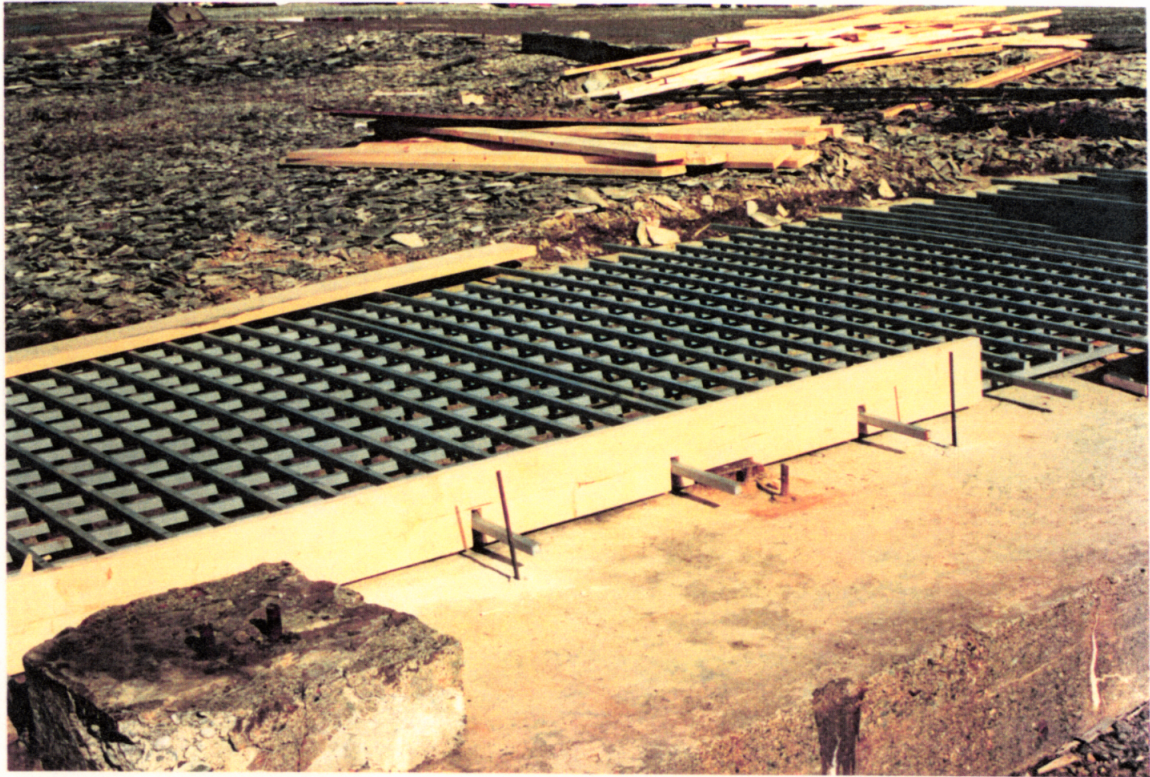


PHOTO NO. E-5: Initial construction of forms showing grate anchoring bars and rebar dowels.

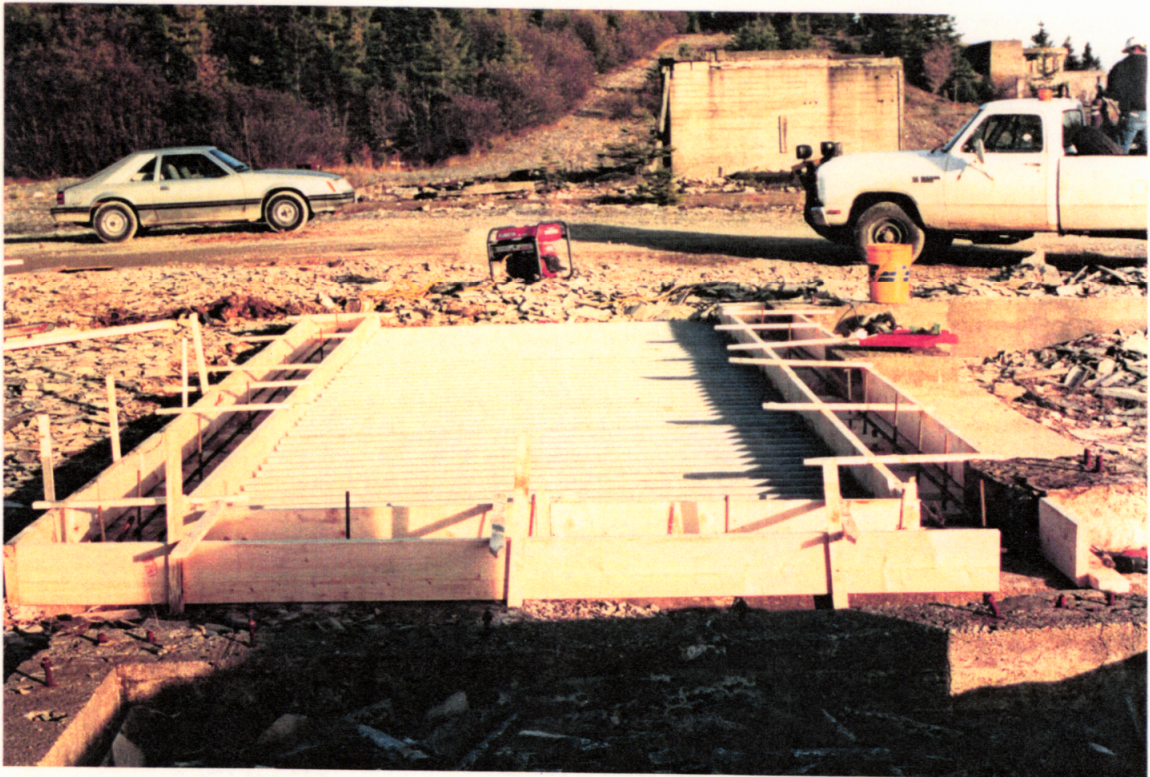


PHOTO NO. E-6: View of formwork for concrete collar.

PROJECT NO. 10903







PHOTO NO. E-7: Casting concrete into collar forms showing rebar reinforcement.

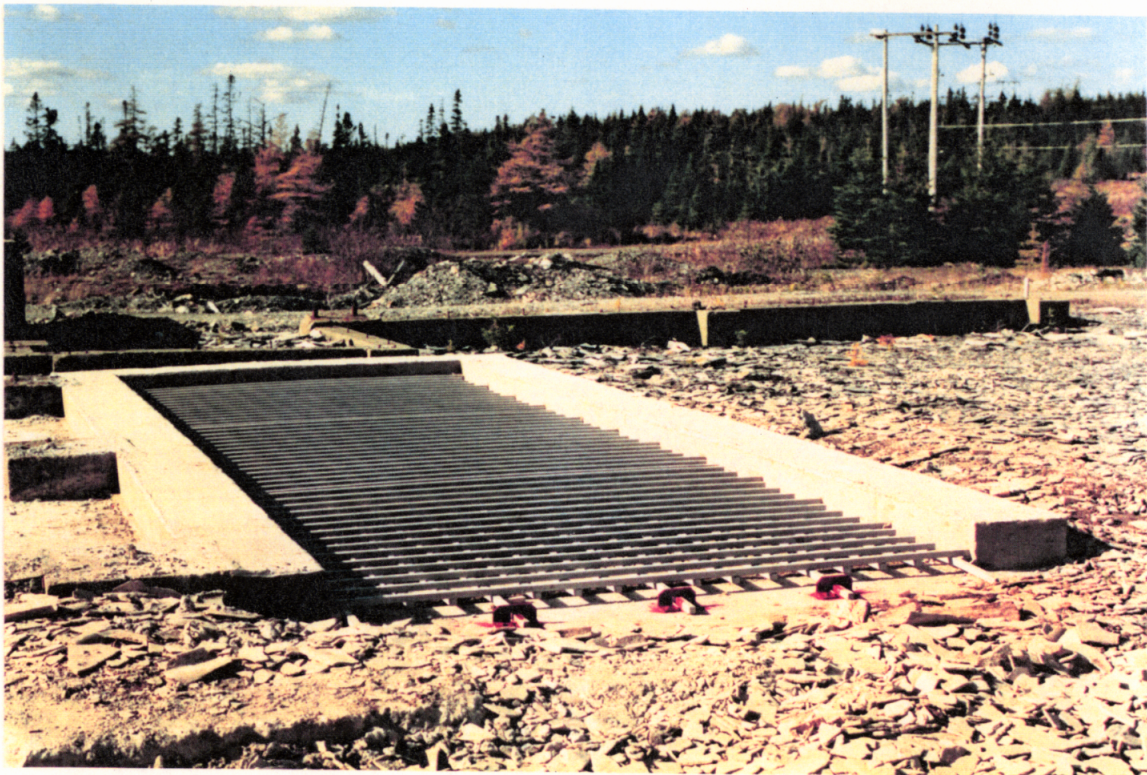


PHOTO NO. E-8: Completed concrete collar and steel grate over No. 2 Shaft showing steel anchor brackets.

PROJECT NO. 10903







PHOTO NO. E-9: Close-up of concrete collar showing bars extending into concrete.



PHOTO No. E-10: Close-up of steel anchor brackets.

PROJECT NO. 10903

