

APPENDIX G

PHOTOGRAPHS - No.2 RAISE





PHOTO NO. G-1: No. 2 Raise with protective barrier prior to closure.



PHOTO NO. G-2: No. 2 Raise showing deteriorating timber cover.

PROJECT NO. 10903





PHOTO NO. G-3: Timber lining in No. 2 Raise extending to bedrock.



PHOTO NO. G-4: Excavating fill and timber lining around No. 2 Raise.

PROJECT NO. 10903





PHOTO NO. G-5: Removing loose and weathered bedrock around perimeter of No. 2 Raise.



PHOTO NO. G-6: Preparing to unload precast concrete panels from flatbed.

PROJECT NO. 10903





PHOTO NO. G-7: Precast panels awaiting installation with cracked panels on right.



PHOTO NO. G-8: Installing formwork for concrete cast-in-place cap over south half of No. 2 Raise.

PROJECT NO. 10903





PHOTO NO. G-9: Completed formwork for cast-in-place concrete cap and spreading concrete levelling course for pre-cast panels.



PHOTO NO. G-10: Lowering pre-cast panel into No. 2 Raise excavation.

PROJECT NO. 10903





PHOTO NO. G-11: Lowering pre-cast panel onto support timbers prior to final positioning.



PHOTO NO. G-12: Two pre-cast panels in final location over north half of No. 2 Raise.

PROJECT NO. 10903





PHOTO NO. G-13: Close-up of fine rock fill levelling course under pre-cast panel.



PHOTO NO. G-14: Placing well graded rock fill around pre-cast panels.

PROJECT NO. 10903





PHOTO NO. G-15: Positioning and tying rebar reinforcement in formwork of cast-in-place concrete cap.



PHOTO NO. G-16: Completed rebar reinforcement prior to delivery of concrete.

PROJECT NO. 10903





PHOTO NO. G-17: Vibrating concrete under and around rebar reinforcing rods.

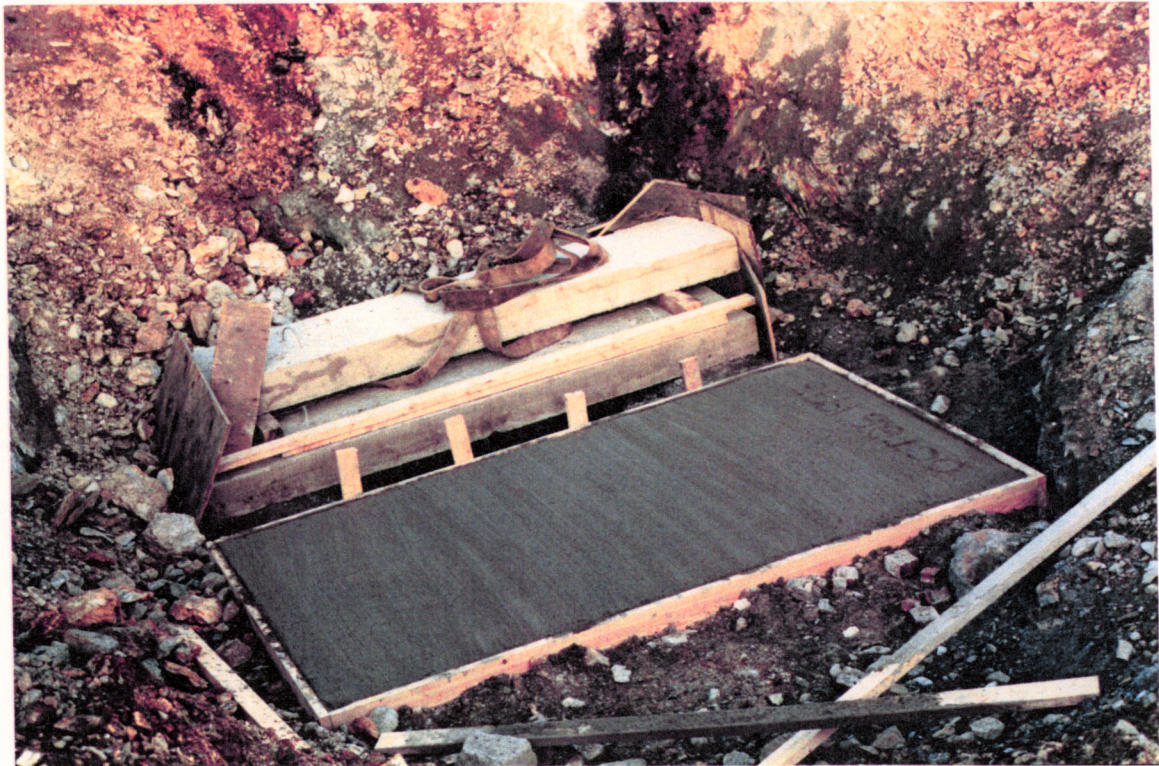


PHOTO NO. G-18: Cast-in-place concrete cap prior to removal of forms.

PROJECT NO. 10903





PHOTO NO. G-19: Completed cap with third pre-cast panel in position.



PHOTO NO. G-20: Close-up of cast-in-place concrete cap positioned on bedrock.

PROJECT NO. 10903





PHOTO NO. G-21: Completed pre-cast and cast-in-place concrete closure cap over No. 2 Raise with survey locations painted on concrete.

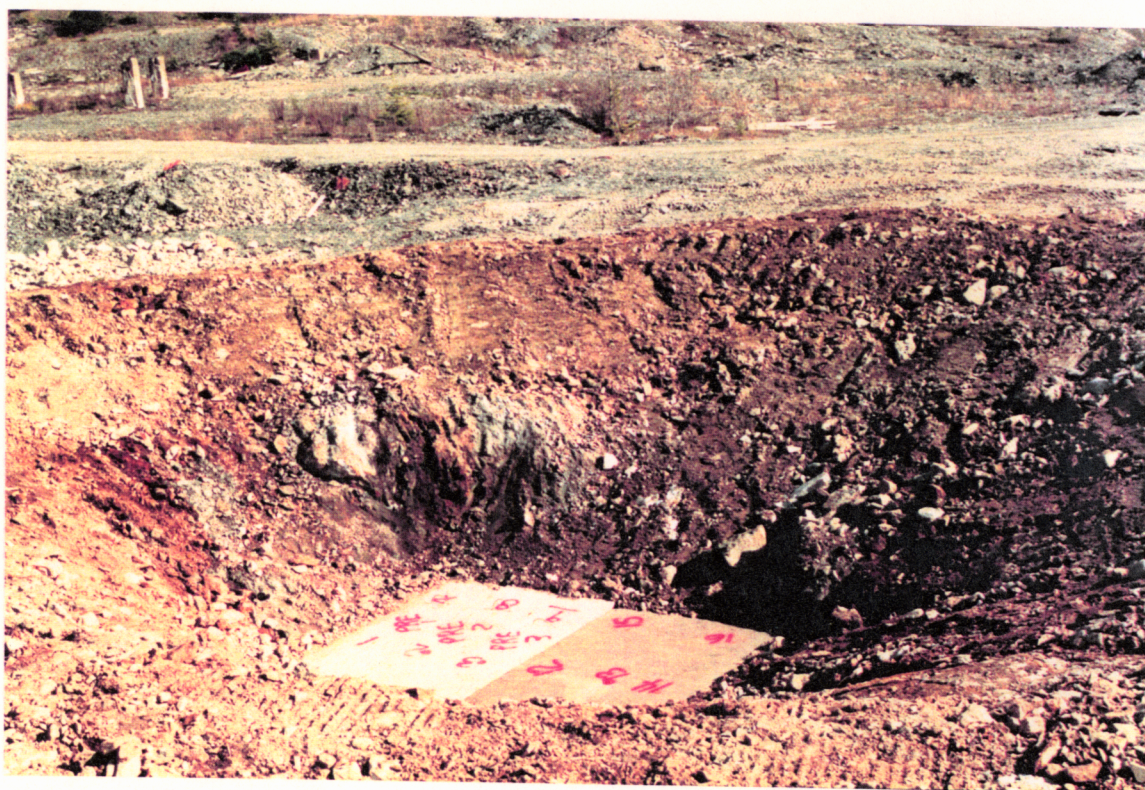


PHOTO NO. G-22: No. 2 Raise closure cap showing excavation and perimeter safety berm.

PROJECT NO. 10903

