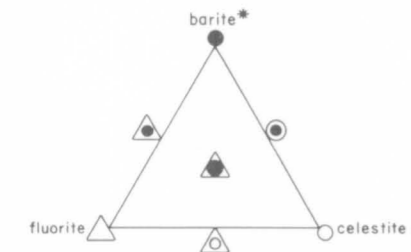
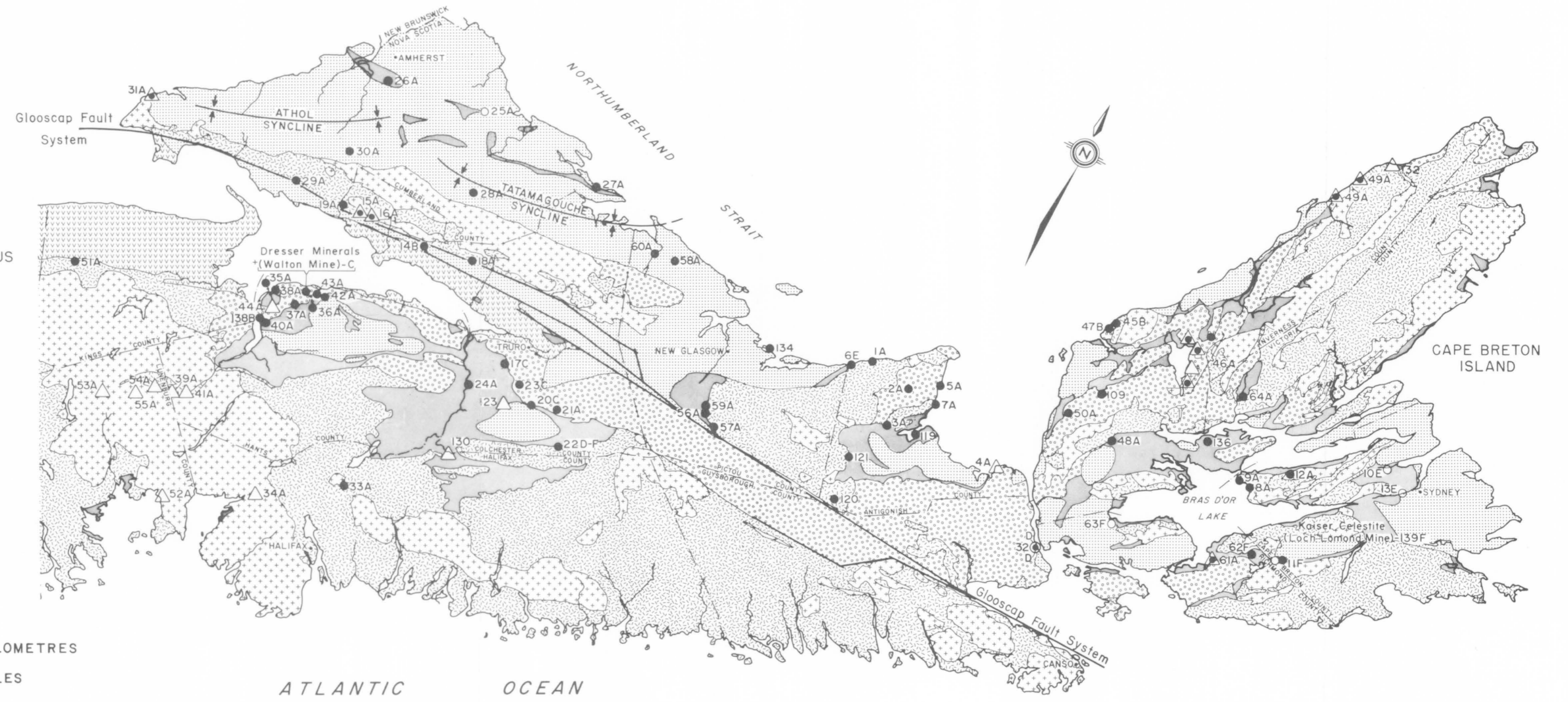
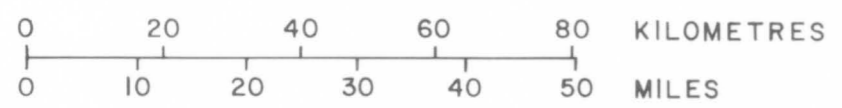


LEGEND

- MESOZOIC**
- TRIASSIC**
 - Basalt, conglomerate, sandstone, shale
 - CARBONIFEROUS**
 - UPPER**
 - Conglomerate, sandstone, shale, coal, minor limestone
 - LOWER**
WINDSOR GROUP
 - Limestone, salt, gypsum, anhydrite, shale, sandstone, conglomerate
- PALEOZOIC**
- MIDDLE DEVONIAN to LOWER CARBONIFEROUS**
 - Sandstone, shale, conglomerate, arkose
 - DEVONIAN and EARLIER**
 - Granite, granodiorite, diorite, gabbro
- PROTEROZOIC TO PALEOZOIC**
- DEVONIAN to PRECAMBRIAN**
 - Deformed sedimentary, metamorphic and igneous rocks



* size of showing / deposit or relative quantities of minerals not implied



ATLANTIC OCEAN