

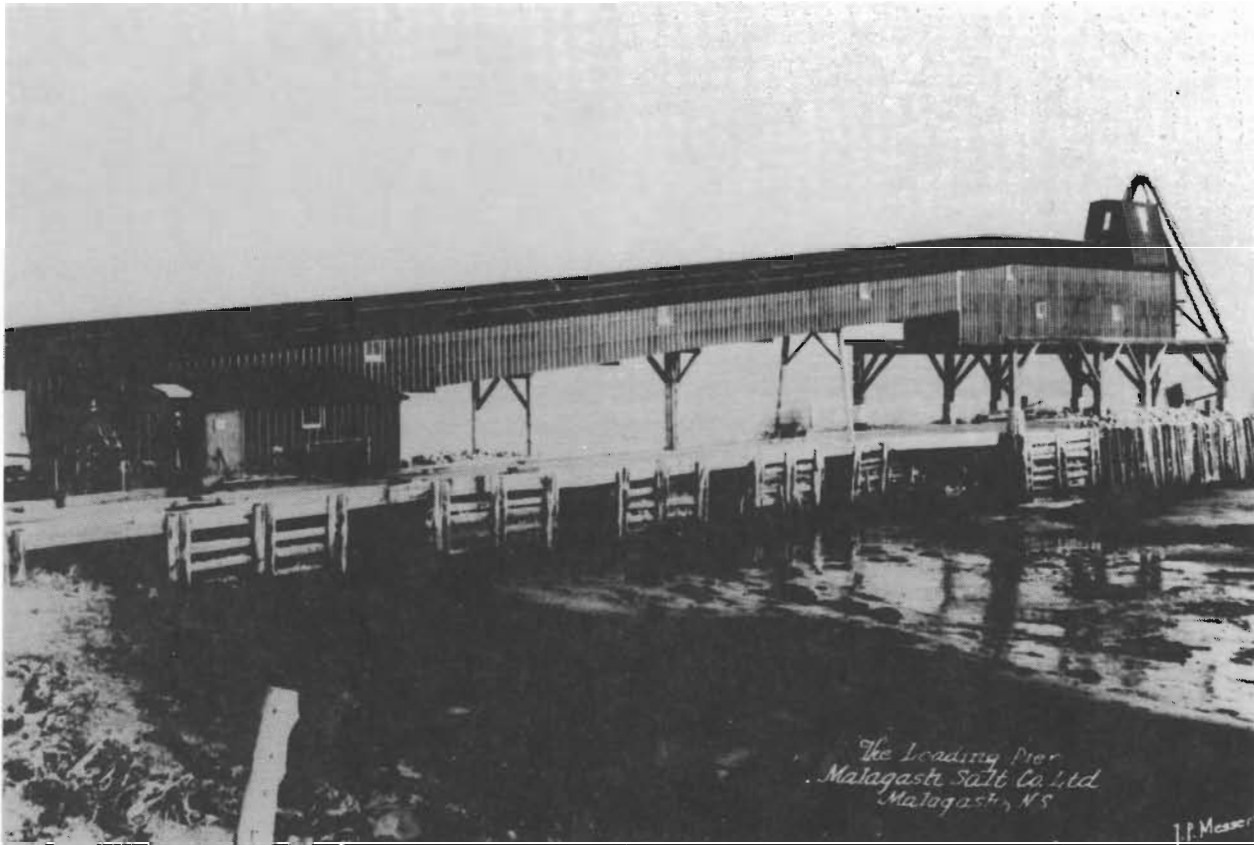
**APPENDIX 5**

**A PHOTOGRAPHIC HISTORY OF SALT AND POTASH EXPLORATION AND MINING IN NOVA SCOTIA**

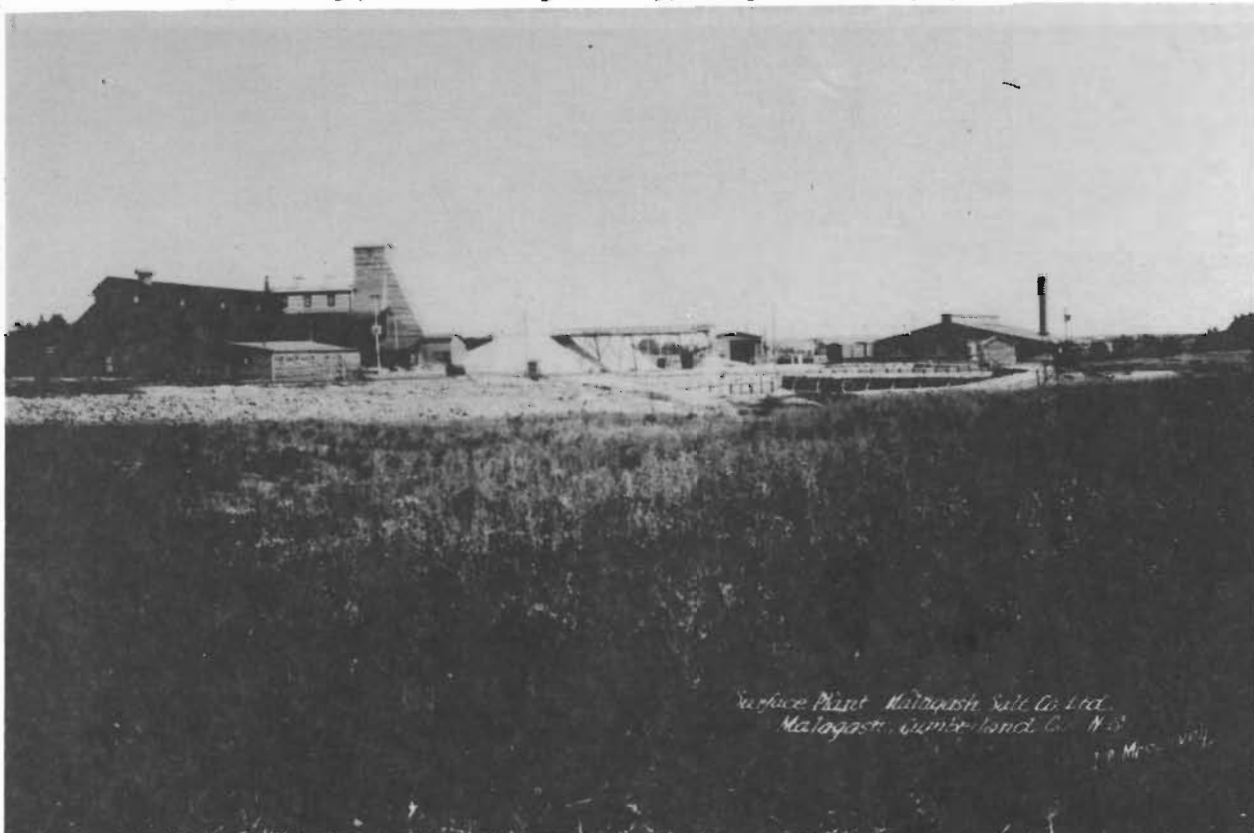


The first rock salt mined in Canada was hoisted at the Malagash Mine, Cumberland County, Nova Scotia on September 2, 1918. Small quantities of potash were produced from this mine beginning in 1921 and represented the first documentation of the presence of potash in the Windsor Group evaporites of Atlantic Canada.

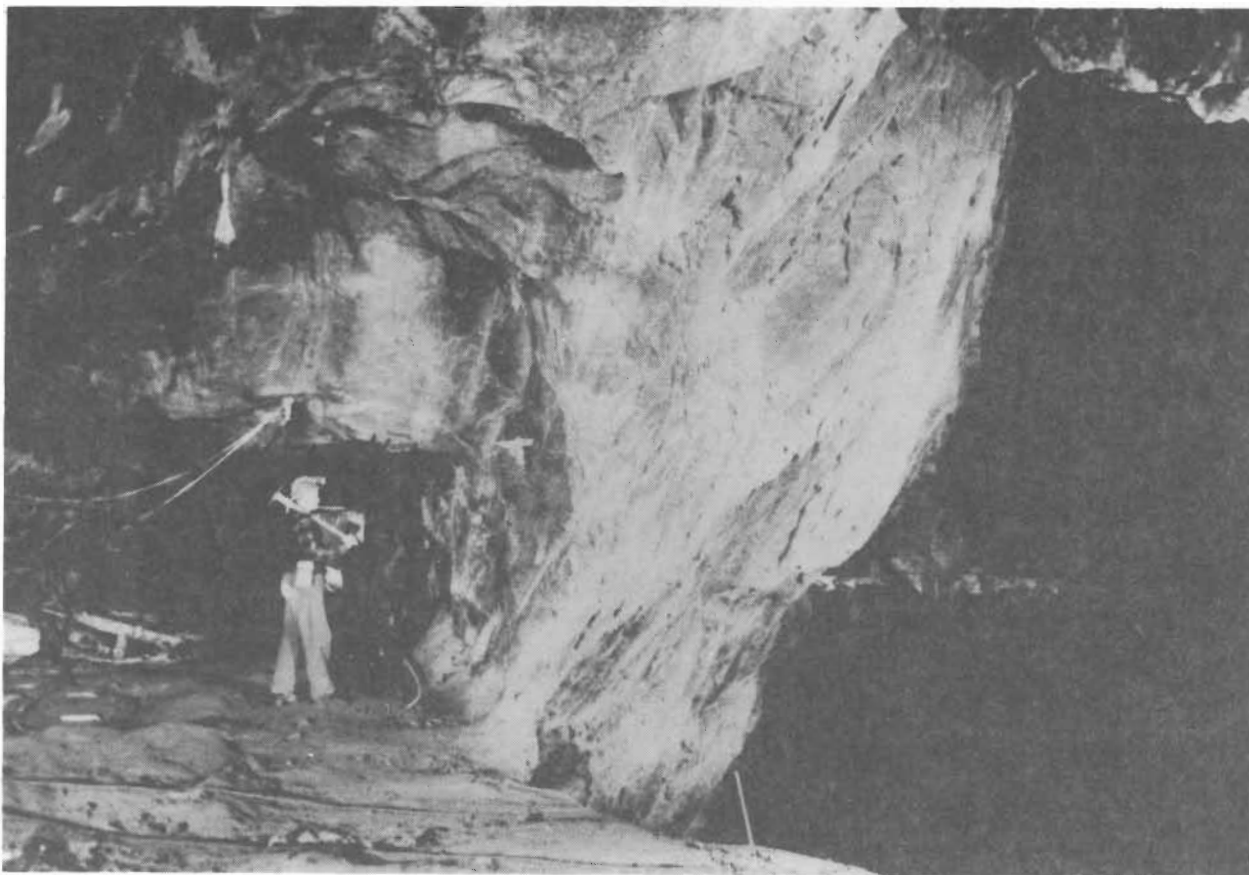




Ship loading pier on Tatamagouche Bay, Malagash Salt Company Limited.



Surface plant Malagash Salt Company Limited, Malagash Mine.



No. 5 Level West, Lucas Seam, Malagash Mine, 1950.



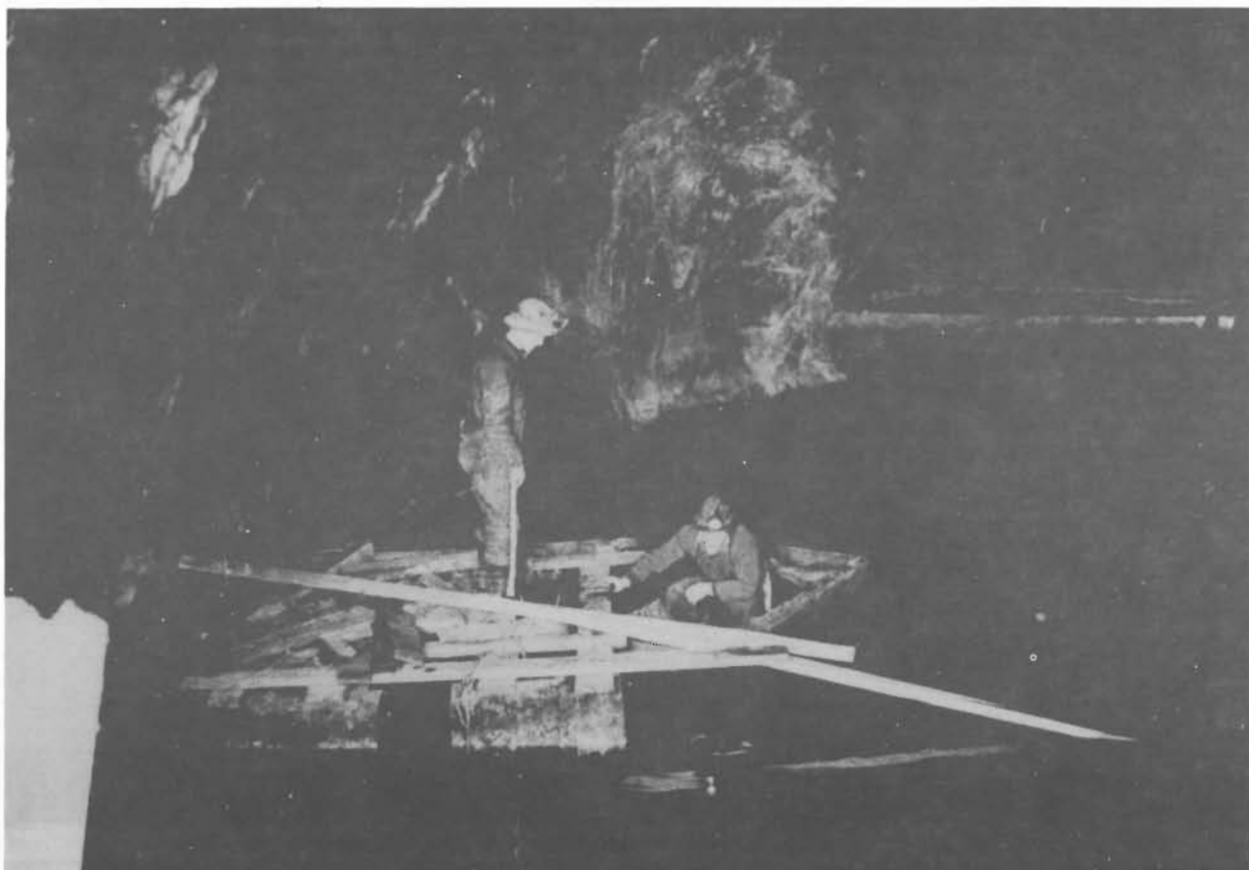
No. 5 Level West, Lucas Seam, Malagash Mine, 1950.



Drill setup used to drill blasting holes in the Malagash Mine.



Undercutting a mine face (slope and level unknown) Malagash Mine (courtesy Reid Picture and Equipment Service),



Solution mining stope, Malagash Mine.





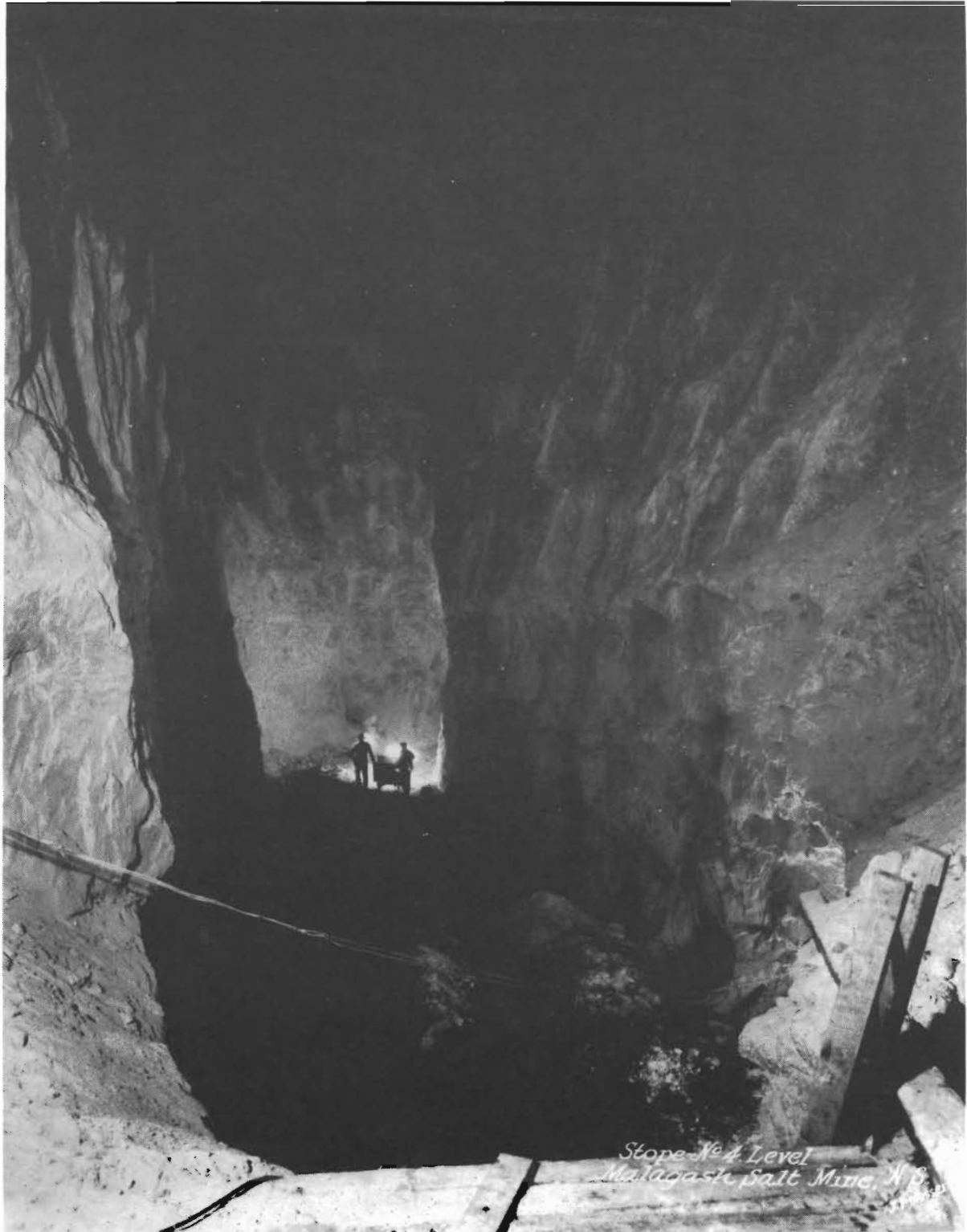
Solution mining stope after brine was pumped out in Malagash Mine. Note the relief on the rock surfaces produced by the different solubility of the salt layers.



Contorted banded salt in mine face, Malagash Mine. The exact location is uncertain.



Stope in McKay Seam, Malagash Mine. The location is uncertain (Circa 1925).



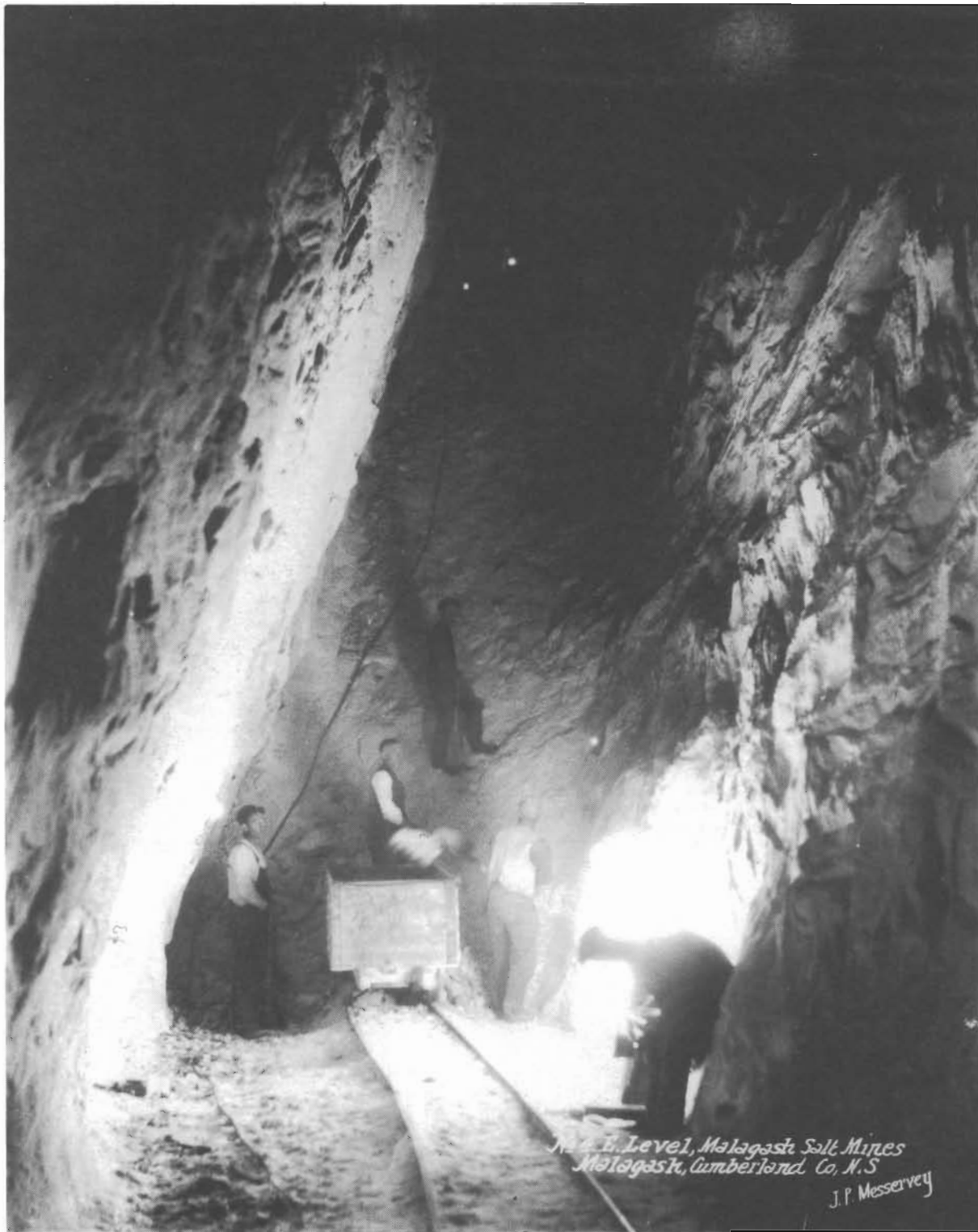
Stope on No. 4 level, Malagash Mine.



McKay Seam, face of No. 4 East Level, 300 feet from slope, Malagash Mine, November 20, 1929.

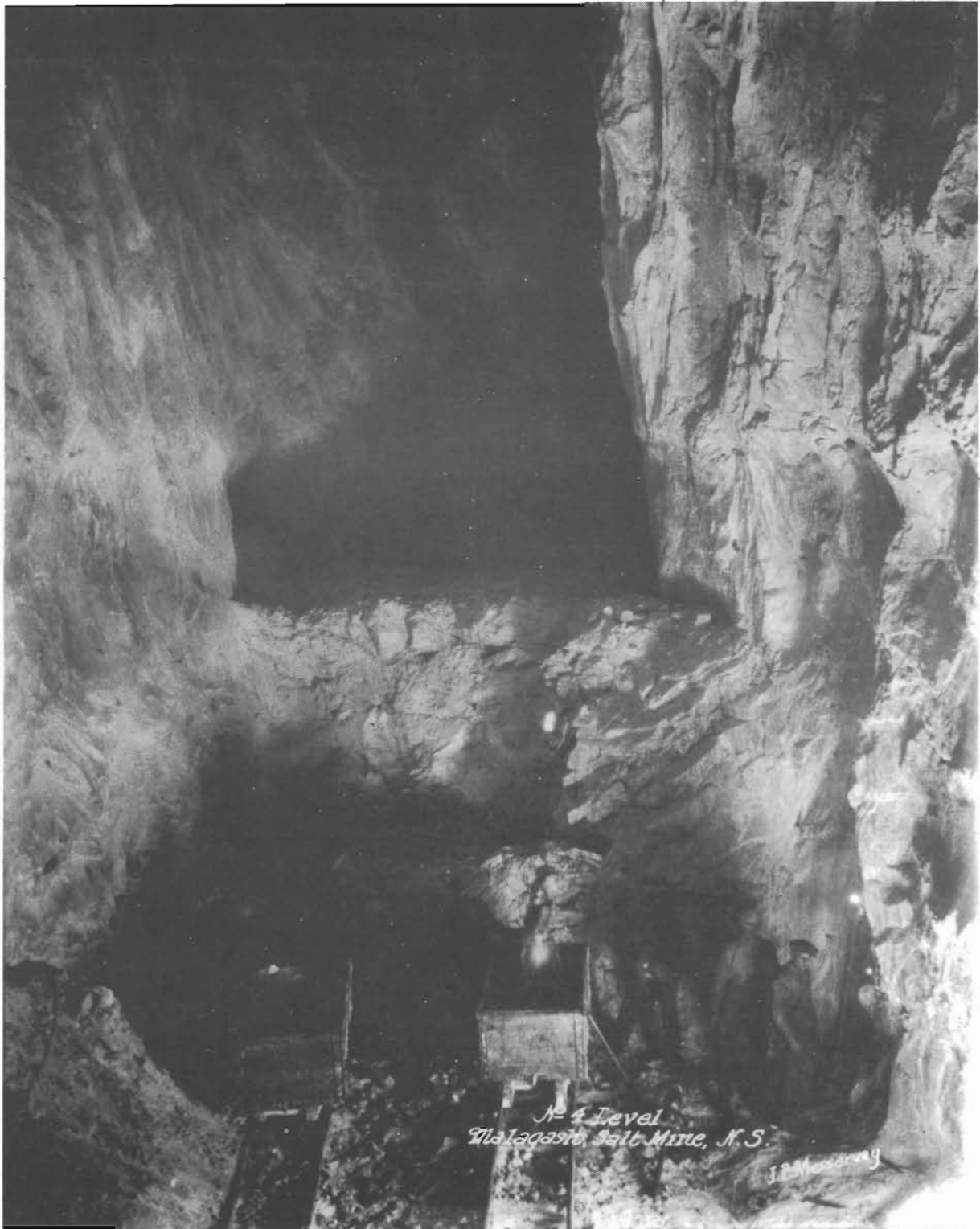


McKay Seam No. 1 Level, 600 feet from shaft, Malagash Mine, November 20, 1929.



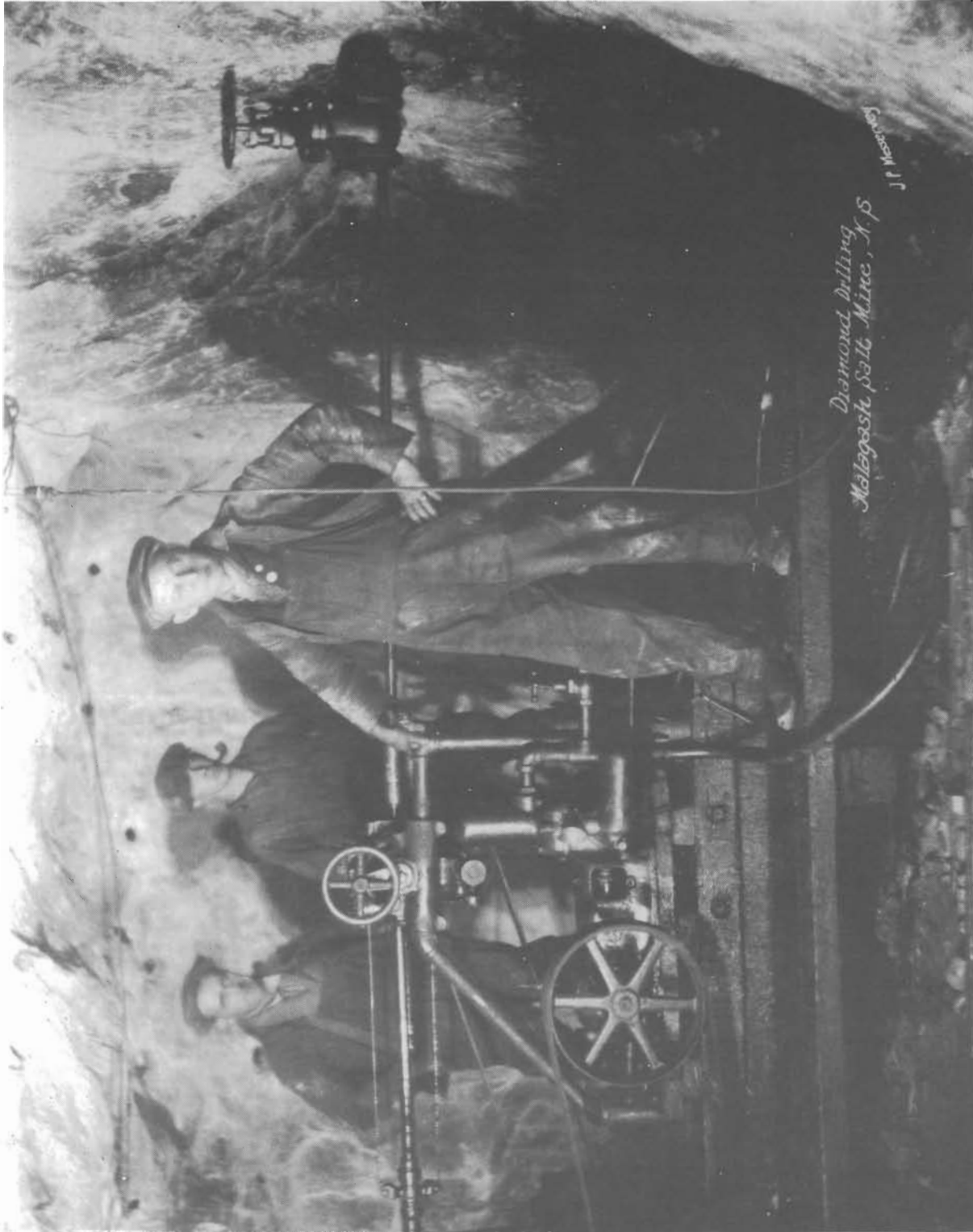
No. 4 East Level, McKay Seam, 150 feet from slope, Malagash Mine, September 17, 1929.



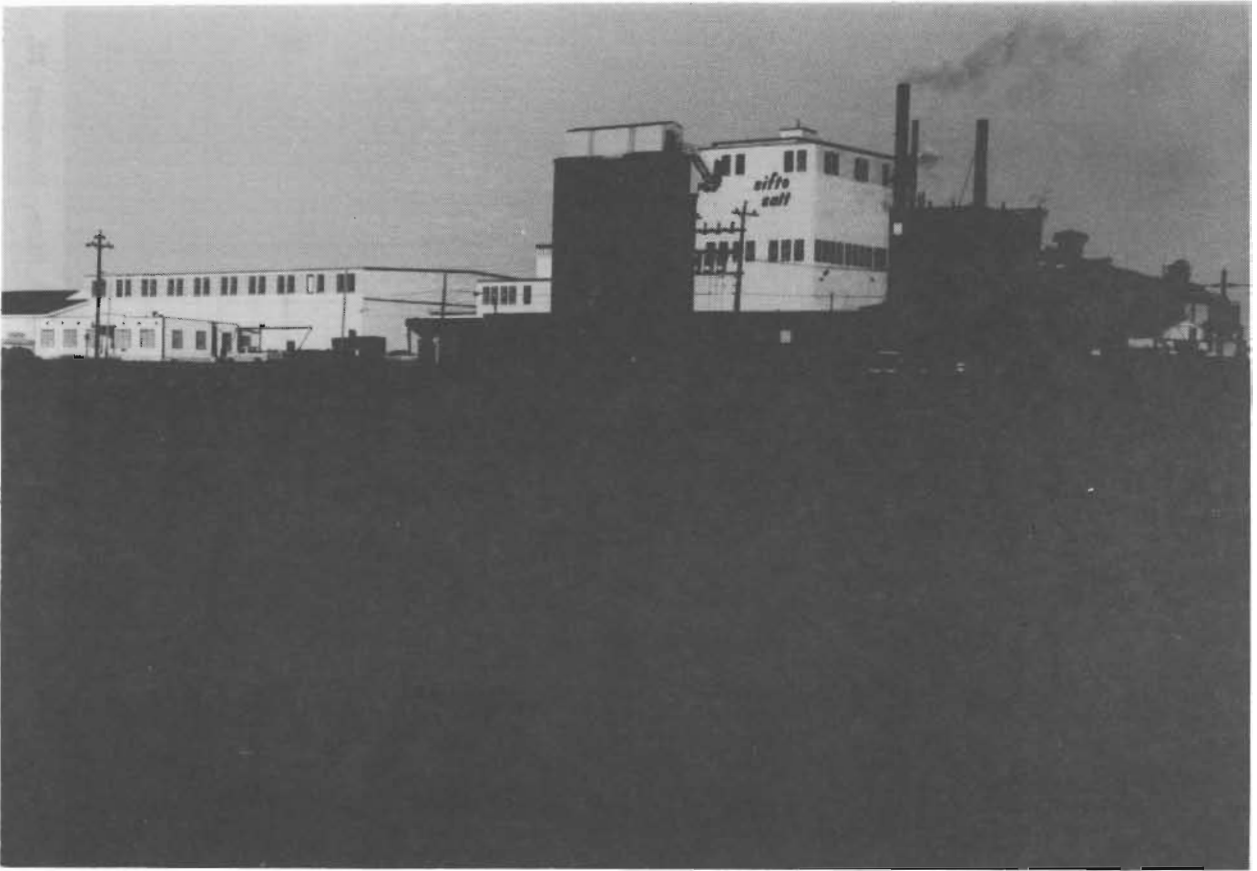


No. 4 West Level, McKay Seam, near main slope, Malagash Mine, September 17, 1929.

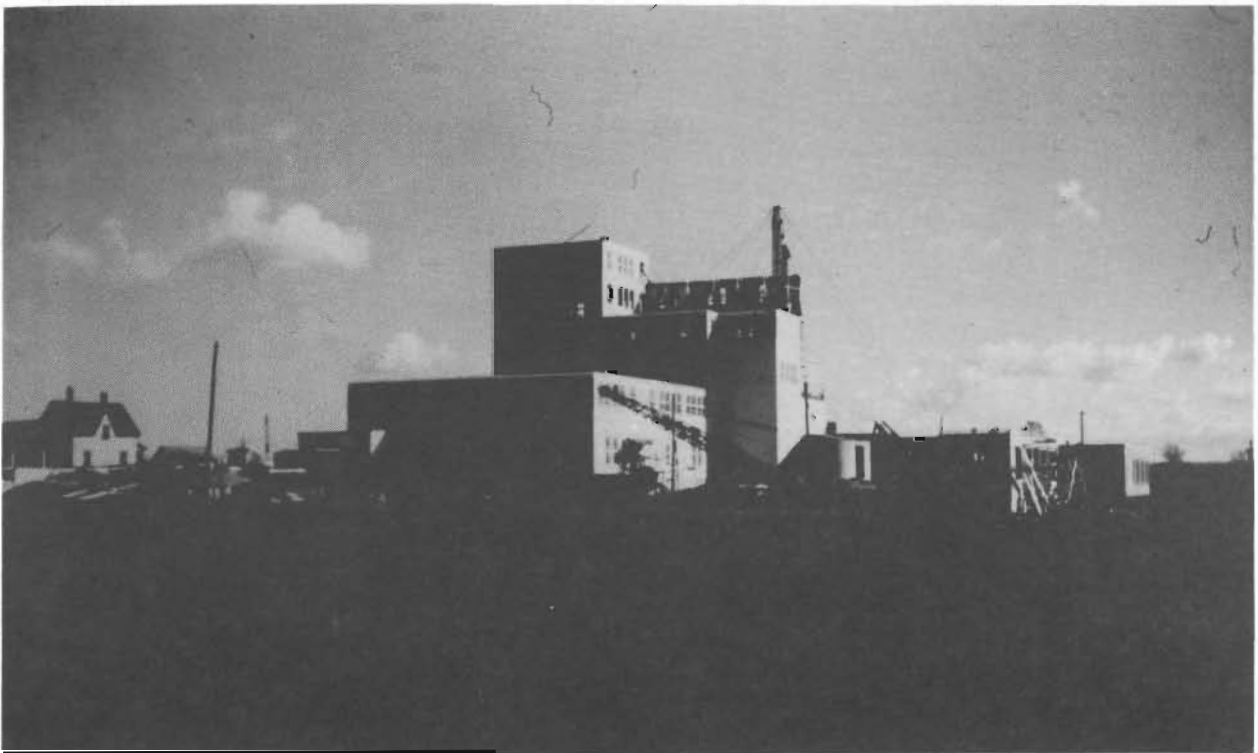




Diamond-drilling at face of Lucas Seam, No. 3 West Level, 500 feet from main slope, Malagash Mine, November 20, 1929.



Domtar Sifto Salt Division bringing plant at Nappan, Cumberland County, Nova Scotia (1980).



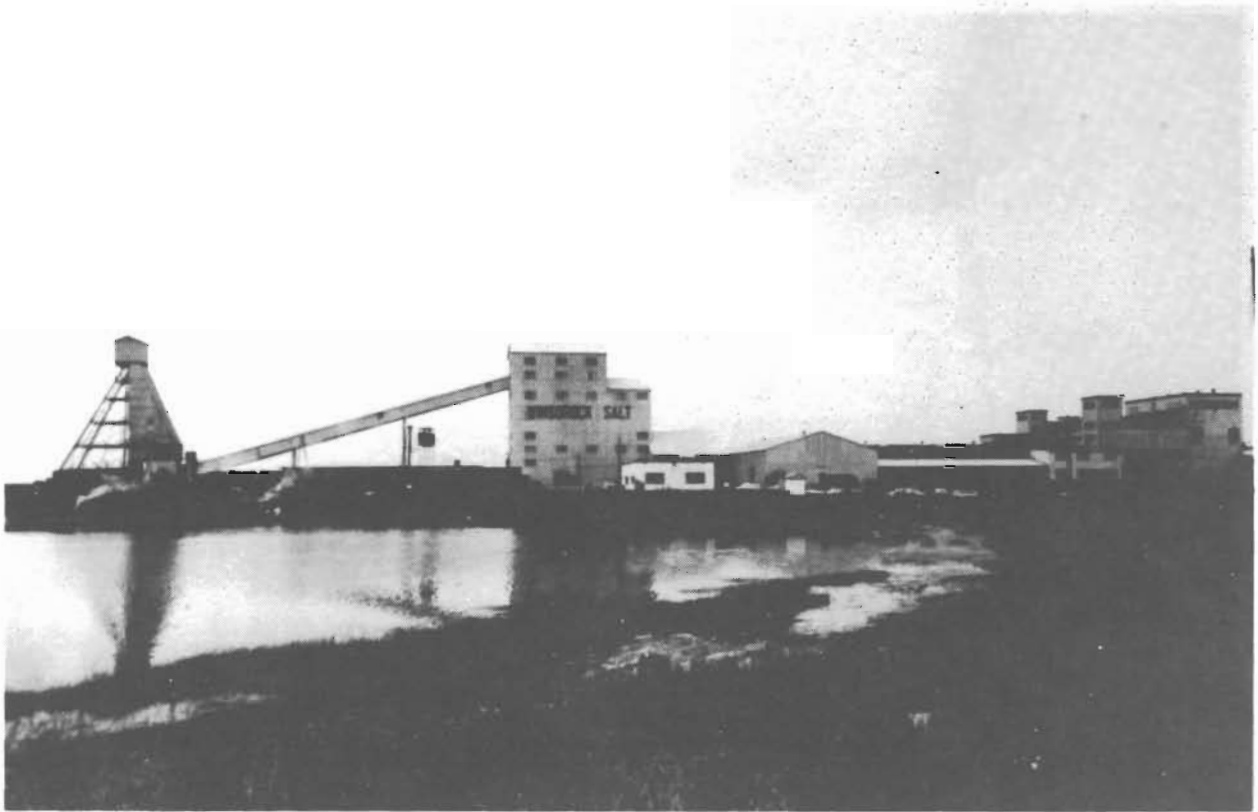
Salt production plant, Maritime Industries Limited, Nappan.



Sunoco oil well No. 1 Nappan deposit.



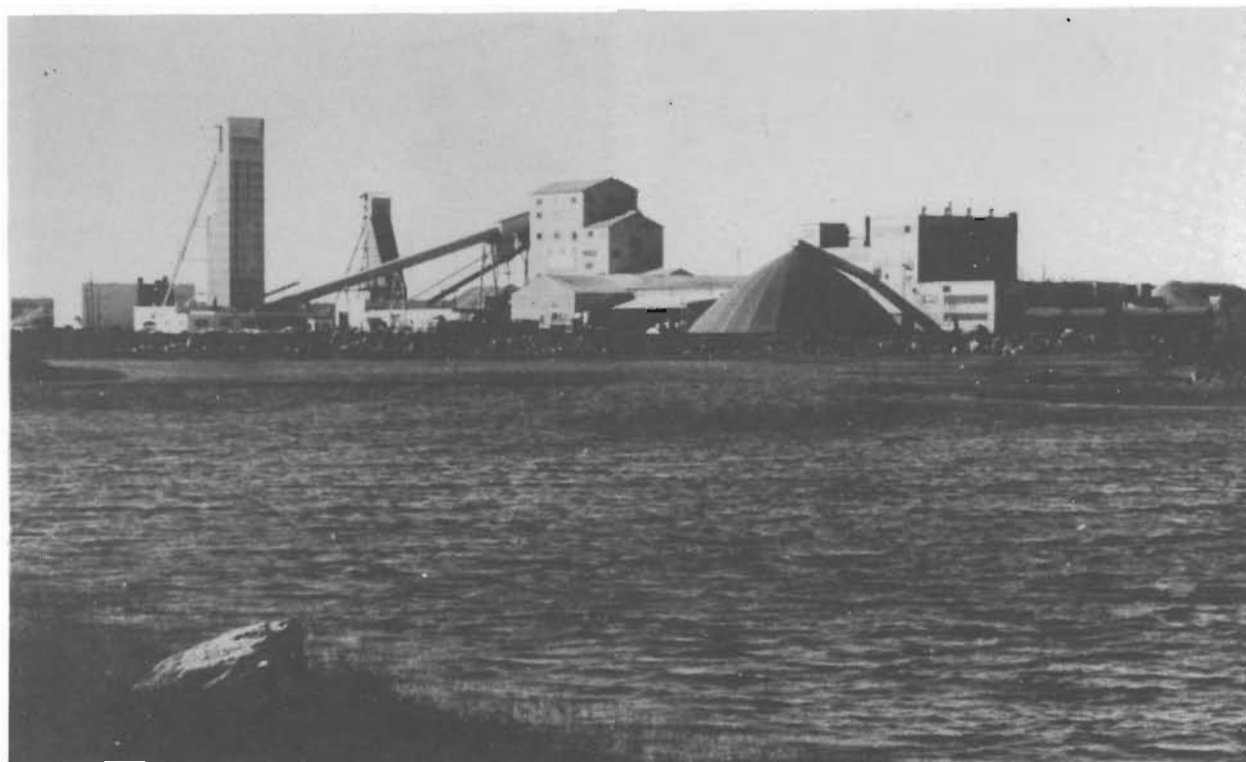
No. 1 shaft head frame and processing buildings, Pugwash Mine (NSIS).



No. 1 shaft head frame and processing buildings, Pugwash Mine (NSIS).



Canadian Salt Company Limited, Pugwash Mine, No. 1 head frame (left), No. 2 head frame (centre), Pugwash, Nova Scotia (October, 1980).



Pubwash Mine, Pugwash, Nova Scotia, No. 2 head frame (left) (October, 1980).



Drill used to drill blast holes in mining face, Pugwash Mine (NSIS).

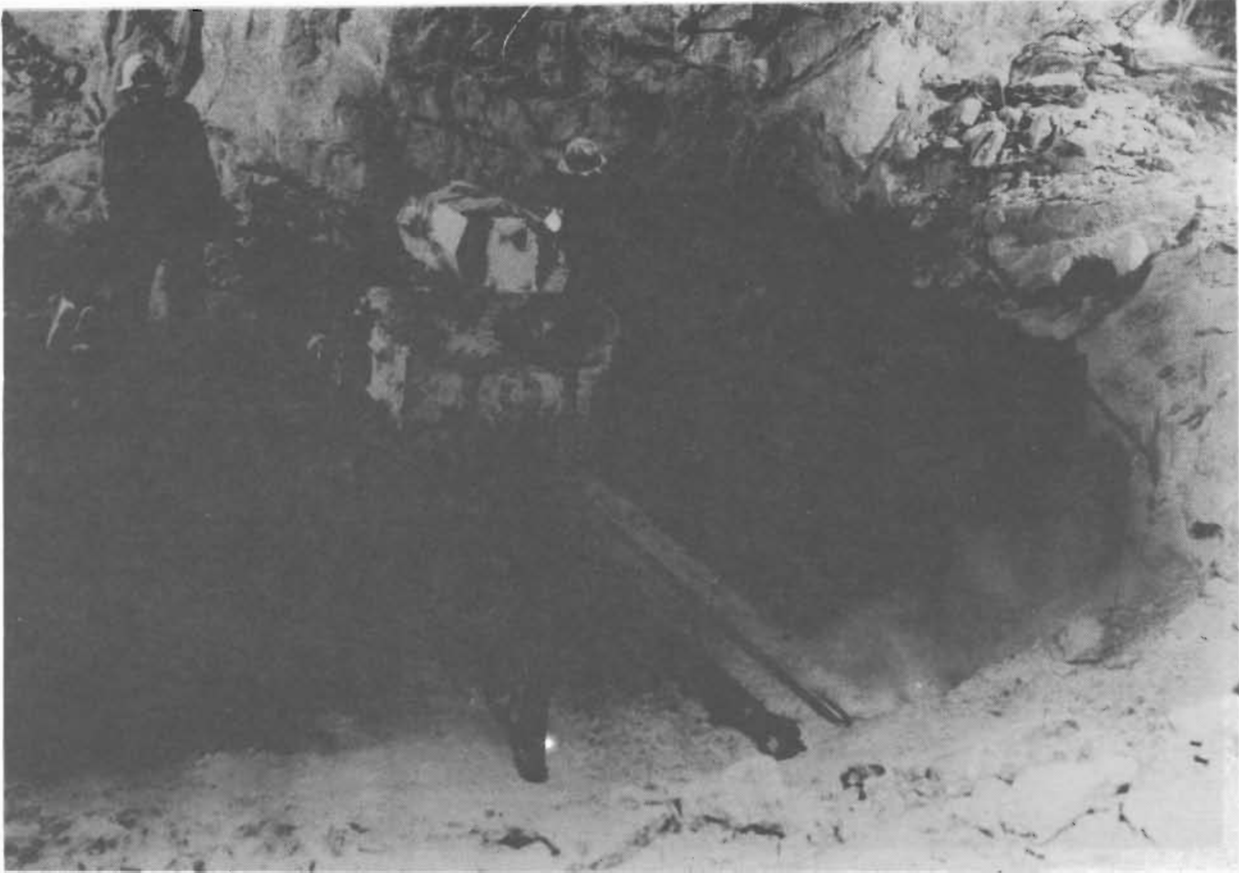




No. 1 shaft and railway loading facilities, Pugwash Mine.



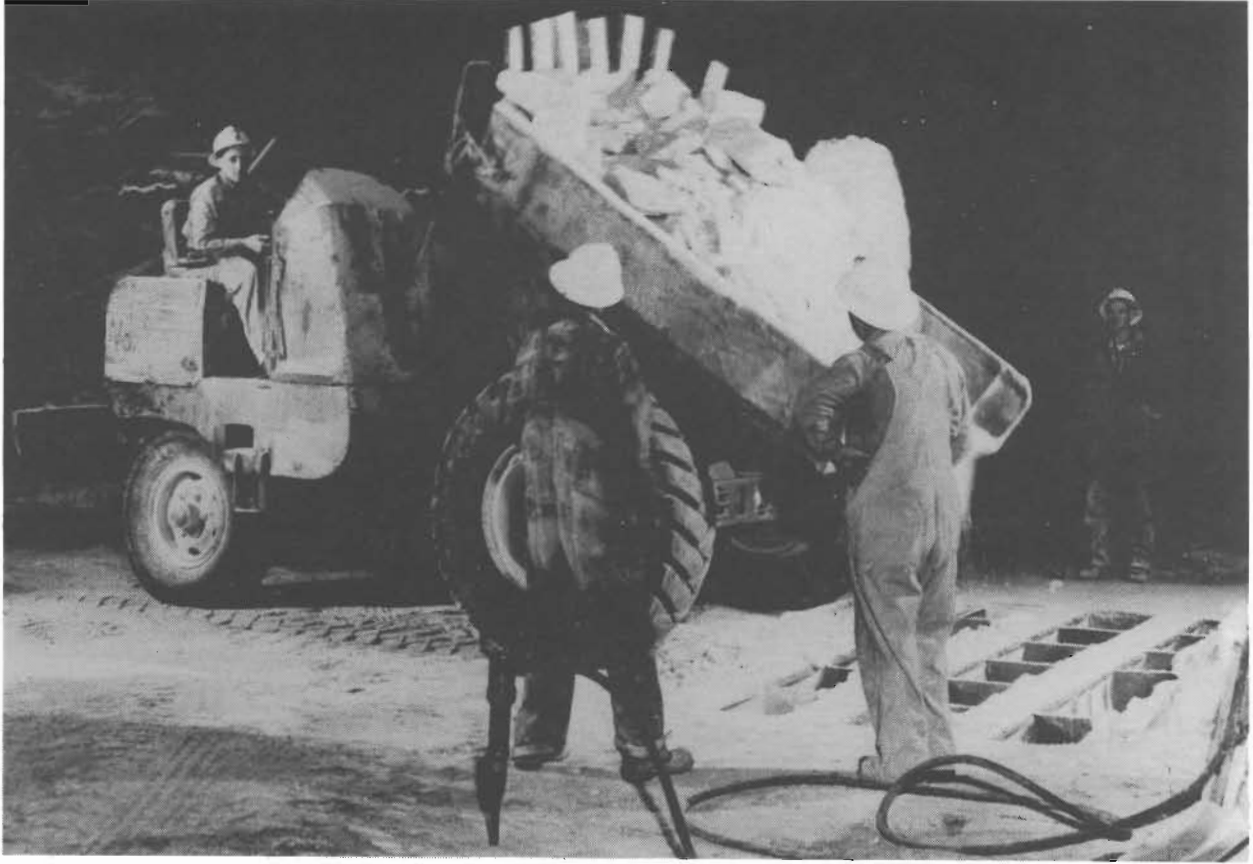
Loading salt into haulage trucks, Pugwash Mine (NSIS).



Undercutting face to be blasted, Pugwash Mine (NSIS).

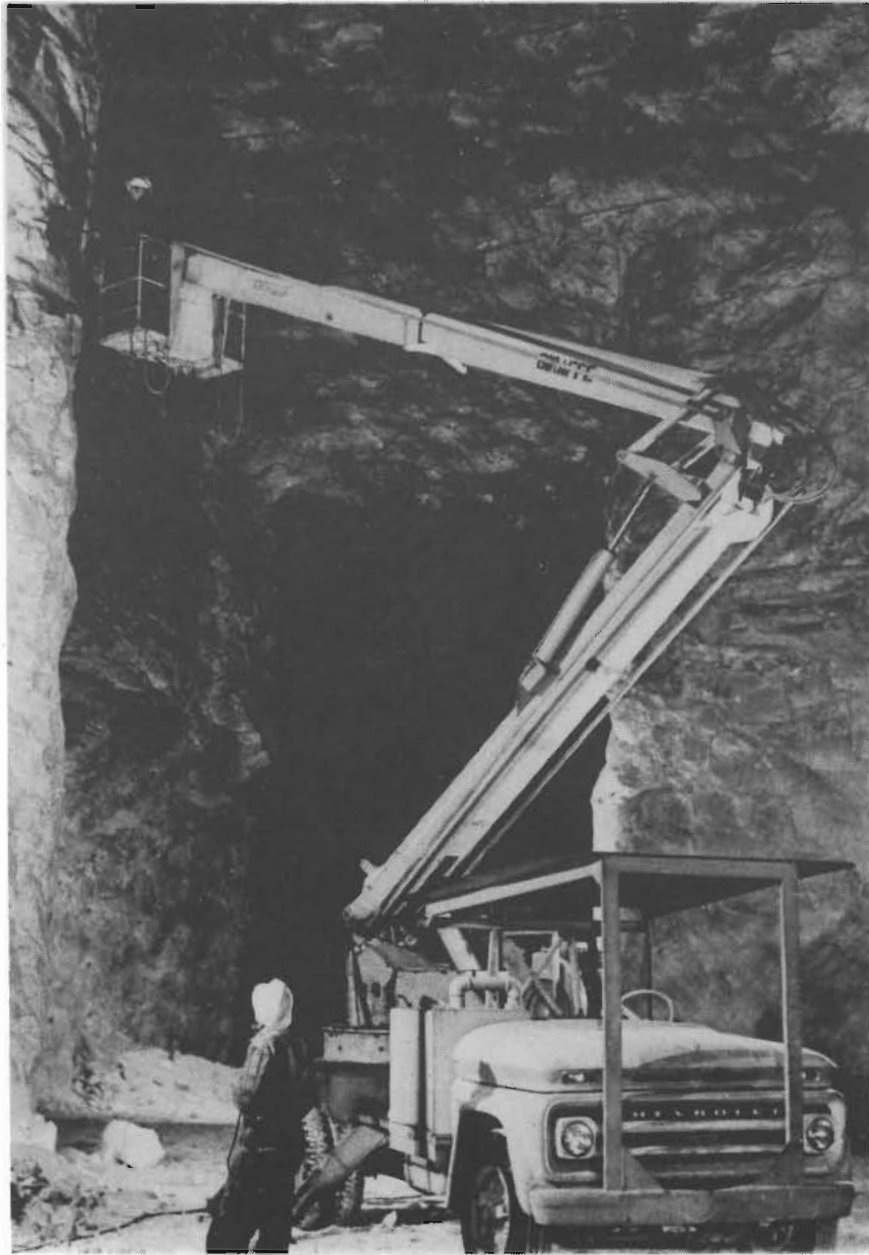


Haulage trucks transporting salt underground, Pugwash Mine (NSIS).



Haulage trucks unloading into primary crusher, Pugwash Mine (NSIS).





Scaling walls in a room from which a second cut has been removed, Pugwash Mine.



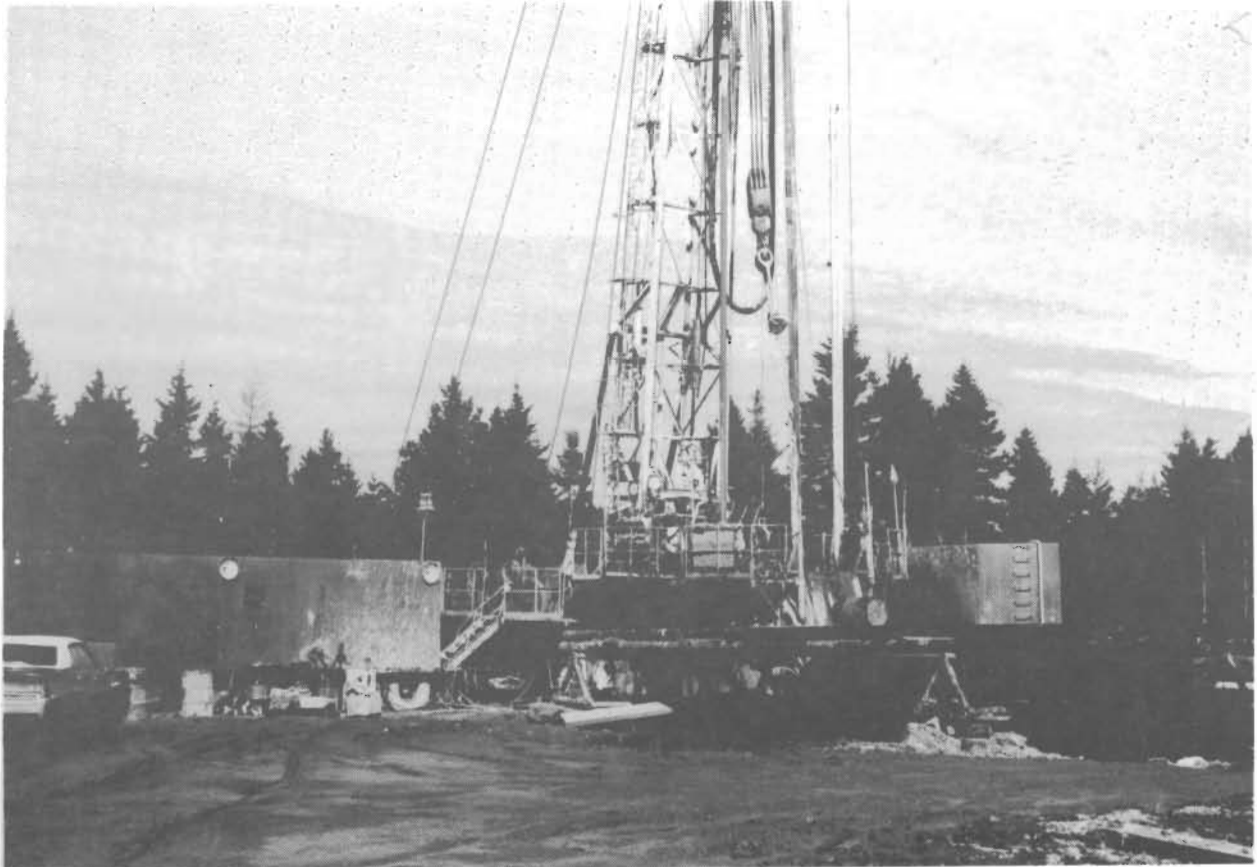
Contorted anhydrite boudins with salt, Pugwash Mine.



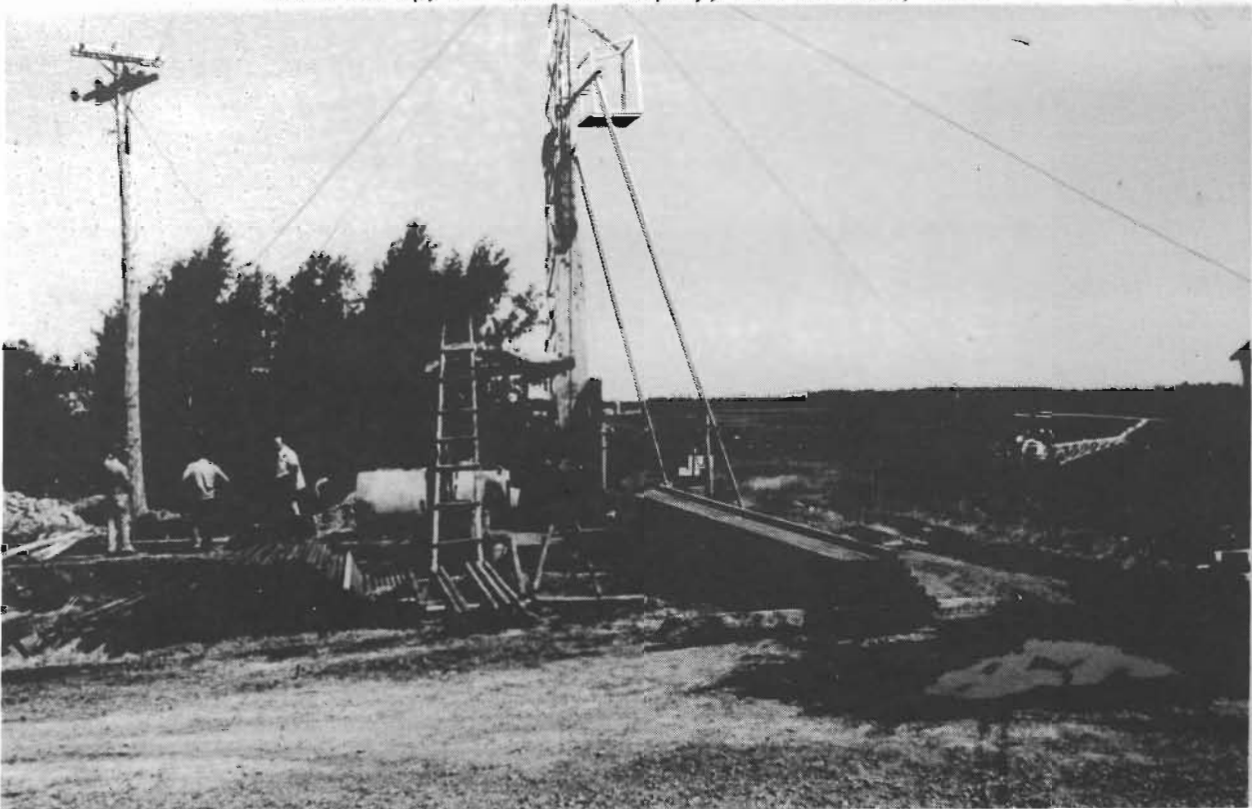
Contorted anhydrite boudins in roof view, Pugwash Mine.



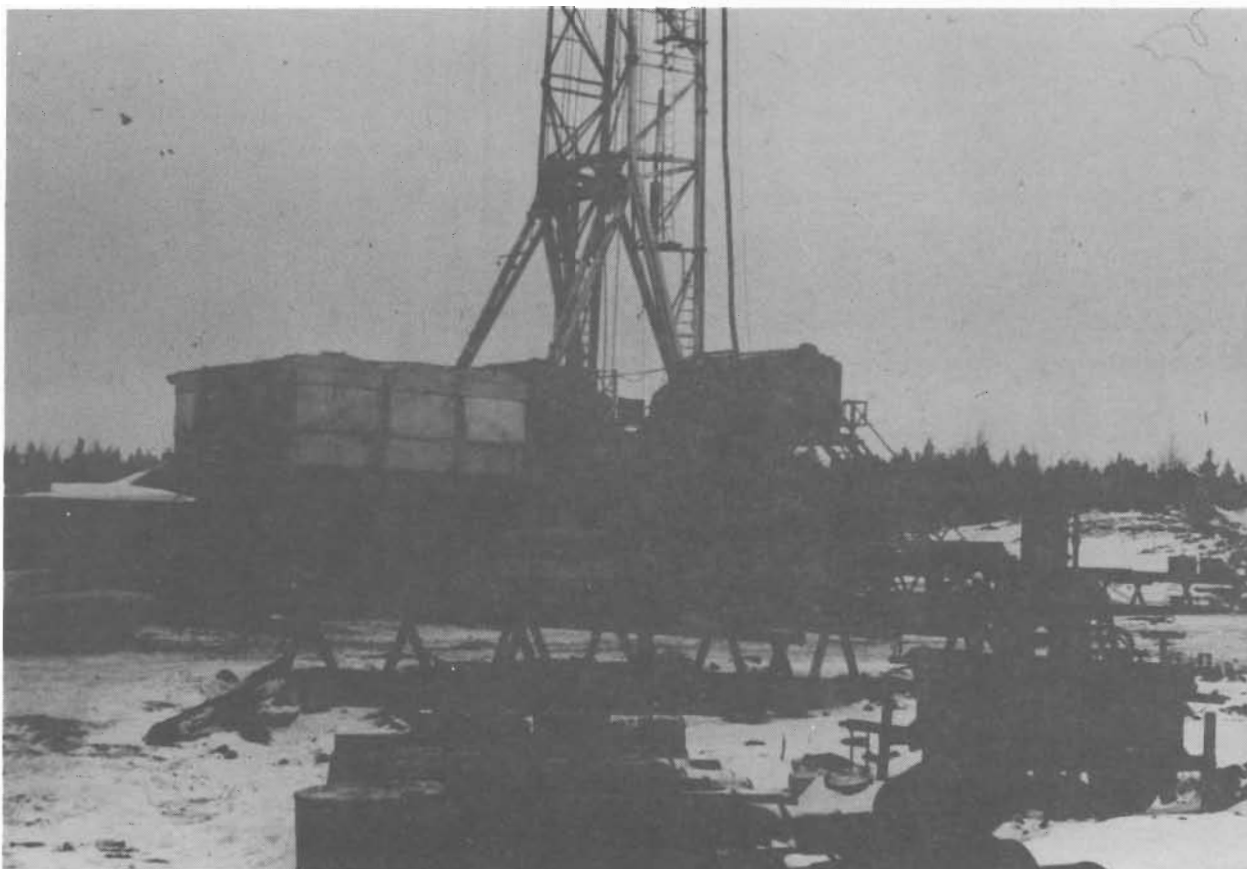
Halite megacryst being removed from a potash salt occurrence, Pugwash Mine.



Drill set up, Dow Chemical Company, Port Richmond, 1973.



Drill set up of diamond-drill hole Sb-1, Stewiacke, Shubenacadie, Stewiacke Deposit, 1975.



Drill set up, Wallace Station No. 1, Wallace Station, 1973.



Drill set up, Wallace No. 1, 1966 potash project, Wallace, 1966.