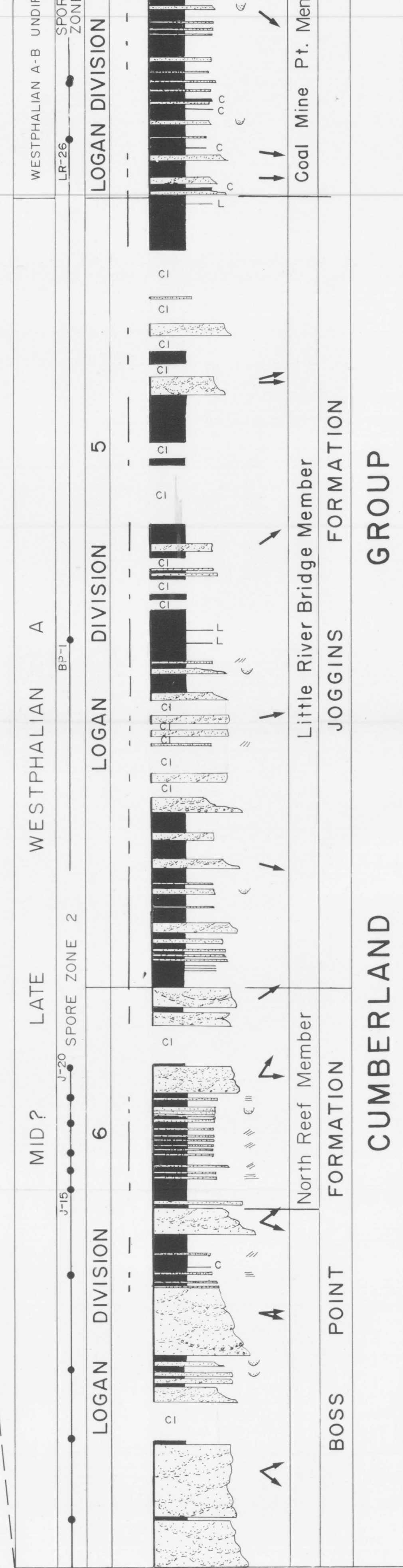
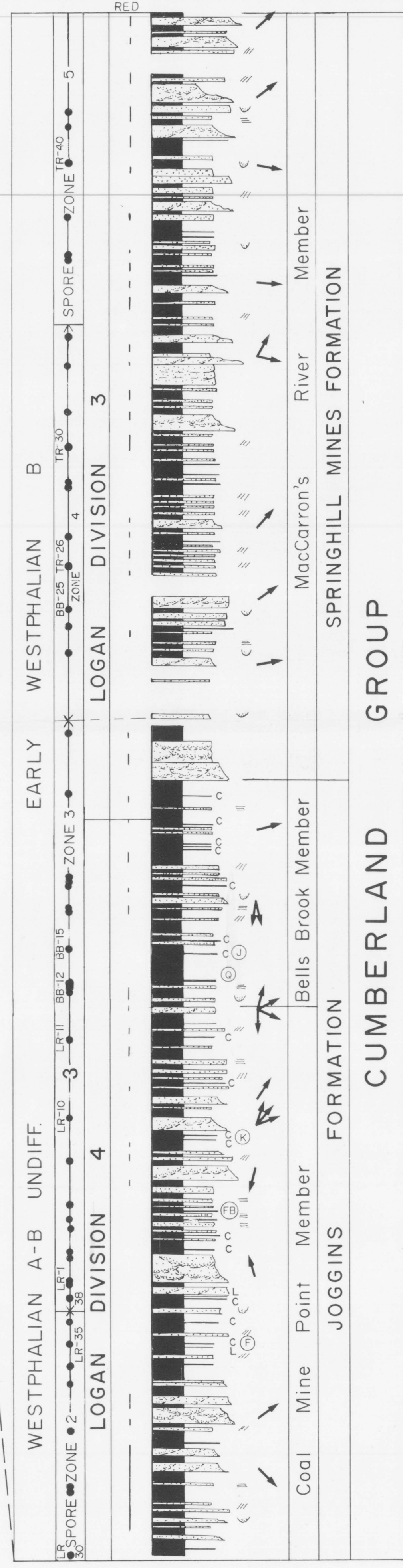


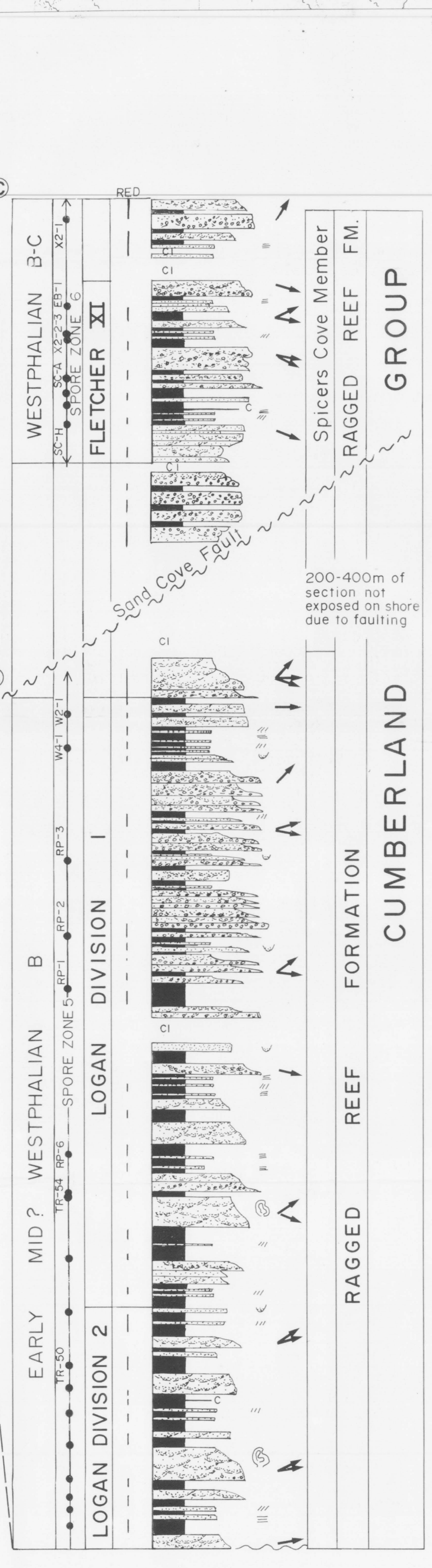
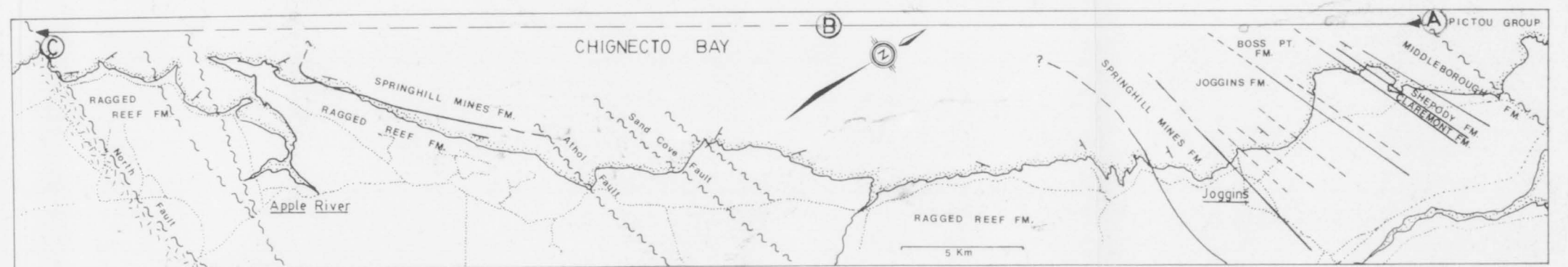
MIDDLEBOROUGH FORMATION
SHEPODY FORMATION
CLAREMONT FORM.
BOSS POINT FORMATION
CUMBERLAND GROUP
MABOU GROUP



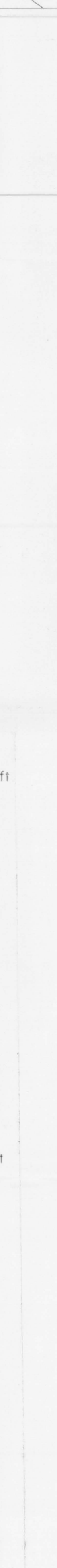
WESTPHALIAN A-B UNDIFF.
WESTPHALIAN A
BOSS POINT FORMATION
JOGGINS FORMATION
Little River Bridge Member
CUMBERLAND GROUP



WESTPHALIAN A-B UNDIFF.
EARLY WESTPHALIAN B
LOGAN DIVISION 4
LOGAN DIVISION 3
Coal Mine Point Member
Bells Brook Member
MacCarron's River Member
SPRINGHILL MINES FORMATION
CUMBERLAND GROUP



WESTPHALIAN B-C
WESTPHALIAN B
LOGAN DIVISION 2
LOGAN DIVISION 1
FLETCHER XI
Spicers Cove Member
RAGGED REEF FM.
CUMBERLAND GROUP



- LEGEND**
- ⊖ Fundy seam
 - ⊖ Forty Brine seam
 - ⊖ Joggins seam
 - ⊖ Kimberly seam
 - ⊖ Queen seam
 - Spore Age (Dolby 1987)
 - Sediment dispersal trend
 - Convolute laminations
 - Cross laminations
 - Horizontal bedding
 - Small troughs
 - Concealed interval
 - Trough Cross strata
 - Limestone
 - Coal
 - ? Disconformity?
 - Cobble conglomerate
 - Pebble conglomerate
 - Coarse sandstone
 - Medium sandstone
 - Fine sandstone
 - Mudrock
- Spore Samples
 J-10 = J-86-10
 BB-12 = BB-MB-12
 LR-1 = LR-BB-1
 TR-1 = MB-BB-1
 DC-1 = DC-BB-1

Compiled in part from Logan (1845).

ENCLOSURE 1 TO ACCOMPANY
NOVA SCOTIA DEPARTMENT OF NATURAL RESOURCES
MEMOIR 10
1994

OPEN FILE ILLUSTRATION 90-001

JOGGINS AREA
CUMBERLAND BASIN
by
R. J. RYAN and R. C. BOEHNER

NOVA SCOTIA DEPARTMENT OF MINES AND ENERGY
Jack MacIsaac John J. Laffin, D. Eng., FEIC, P. Eng.
Minister Deputy Minister

HALIFAX, NOVA SCOTIA
1990