

Melvin Lake Wind Project
Project Location



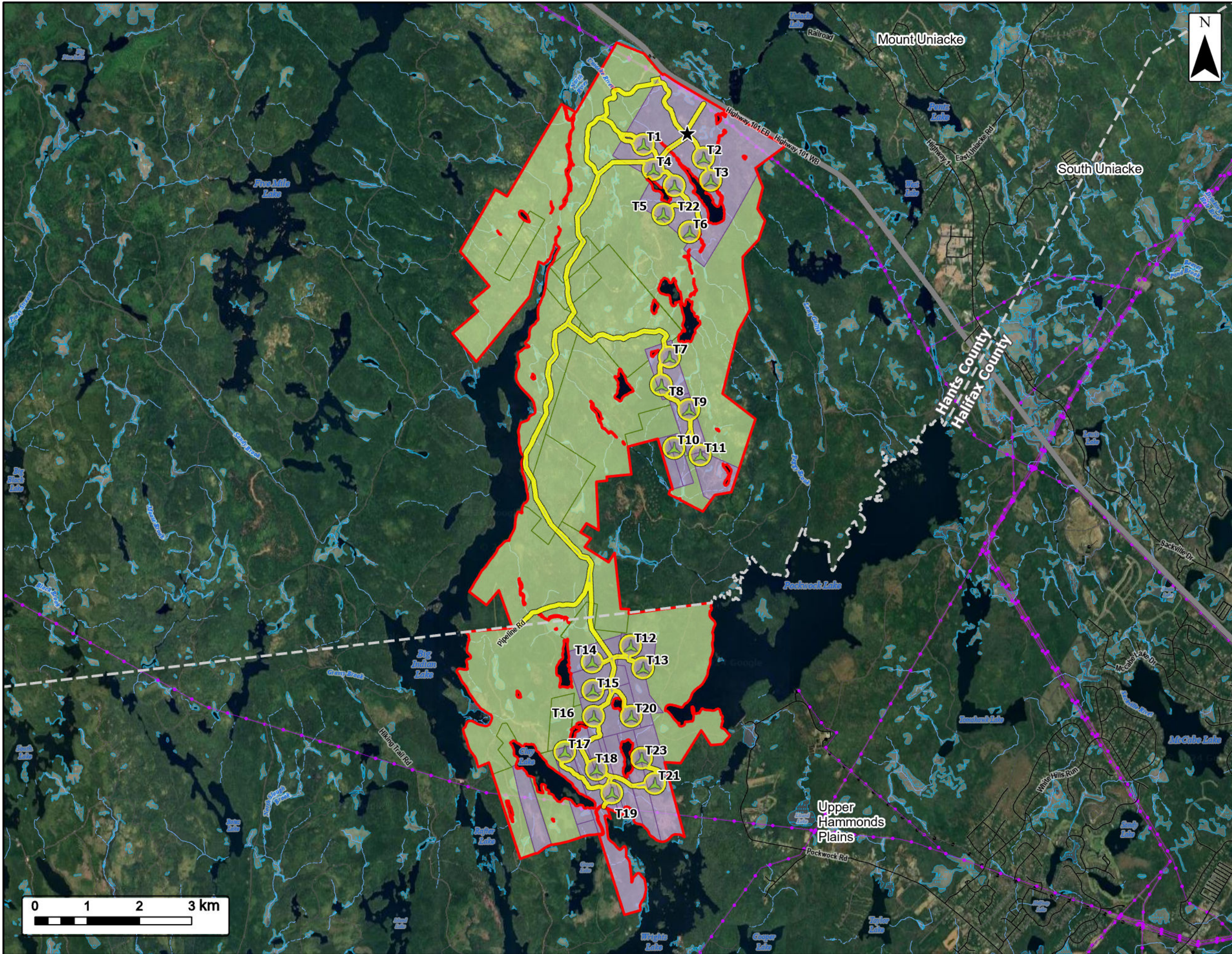
- Study Area
- Assessment Area
- County Boundary Line
- Primary Watershed Boundary
- Transportation**
- Highway
- Road
- Unpaved Road
- Utilities (Line)**
- Existing Pipeline
- Existing Transmission Lines
- Water Features**
- Mapped Stream
- Mapped Indefinite Stream
- Mapped Lakes and Rivers
- Mapped Wetlands



Coordinate System: NAD83 UTM Zone 20N Sources: Google Basemaps, GeoNOVA, SNSIS, NSNRR, ACCDC, IBA Canada, CNWI, HERE, Garmin, USGS

Date: Nov 2024	Project #: 24-9856
Scale: 1:150,000	2.1
Drawn By: K. Wallace	
Checked By: H. Mosher	





Melvin Lake Wind Project
Site Overview



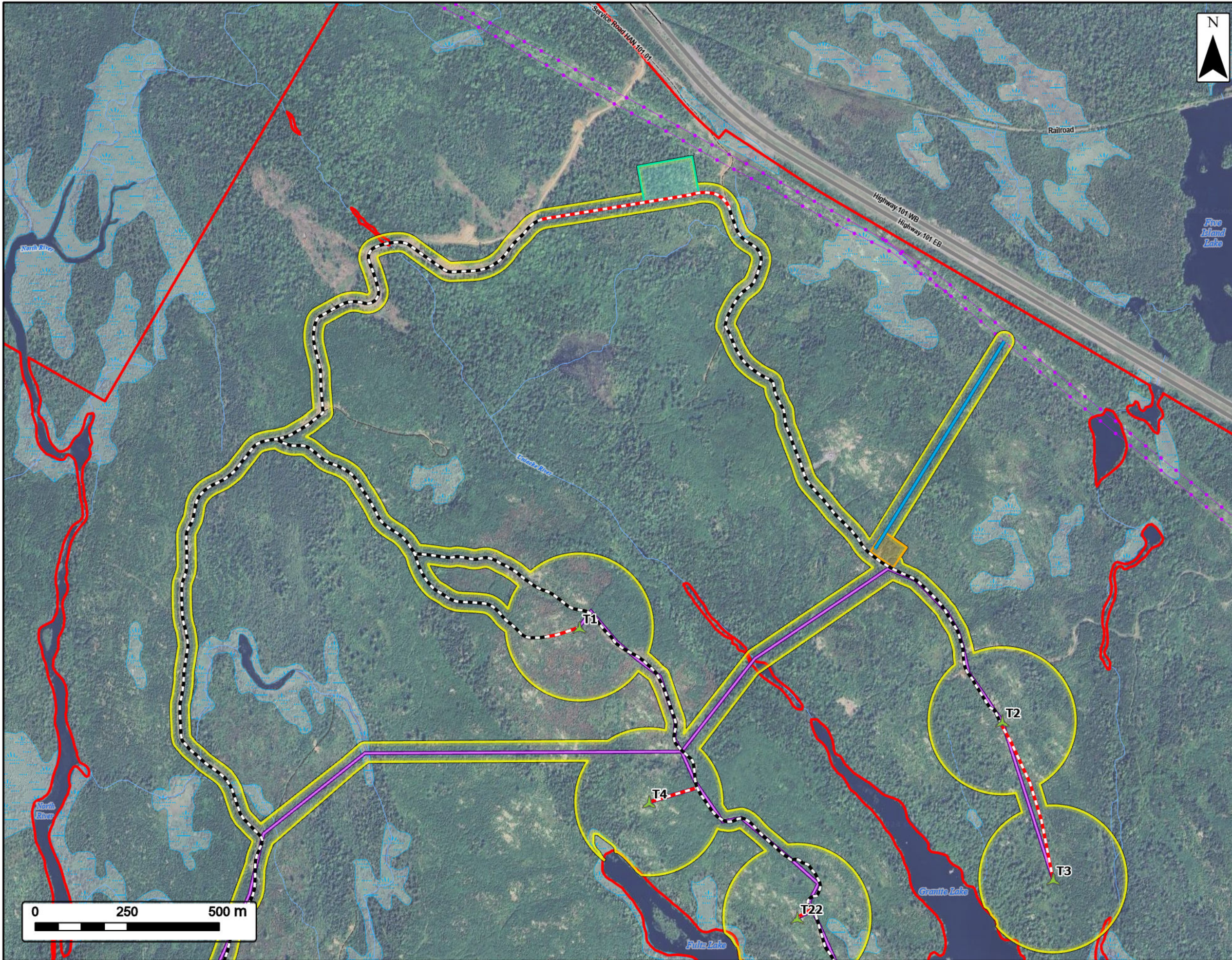
Study Area	
Assessment Area	
Proposed Turbine Locations	
Substation	
Crown Land	
Private Land	
County Boundary Line	
Transportation	
Highway	
Road	
Unpaved Road	
Utilities (Line)	
Existing Pipeline	
Existing Transmission Lines	
Water Features	
Mapped Stream	
Mapped Indefinite Stream	
Mapped Wetlands	



Coordinate System: NAD83 UTM Zone 20N Sources: Google Basemaps, GeoNOVA, SNSIS, NSNRR, ACCDC, IBA Canada, CNWI, HERE, Garmin, USGS

Date: Nov 2024	Project #: 24-9856
Scale: 1:70,000	Drawing #: 2.2
Drawn By: K. Wallace	2.2
Checked By: H. Mosher	

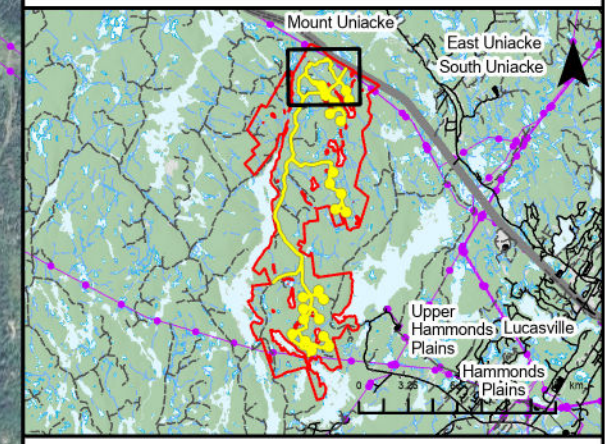




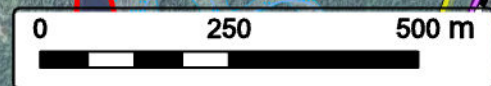
Melvin Lake Wind Project
Infrastructure

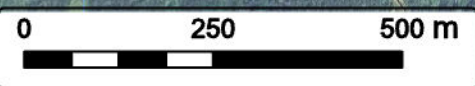
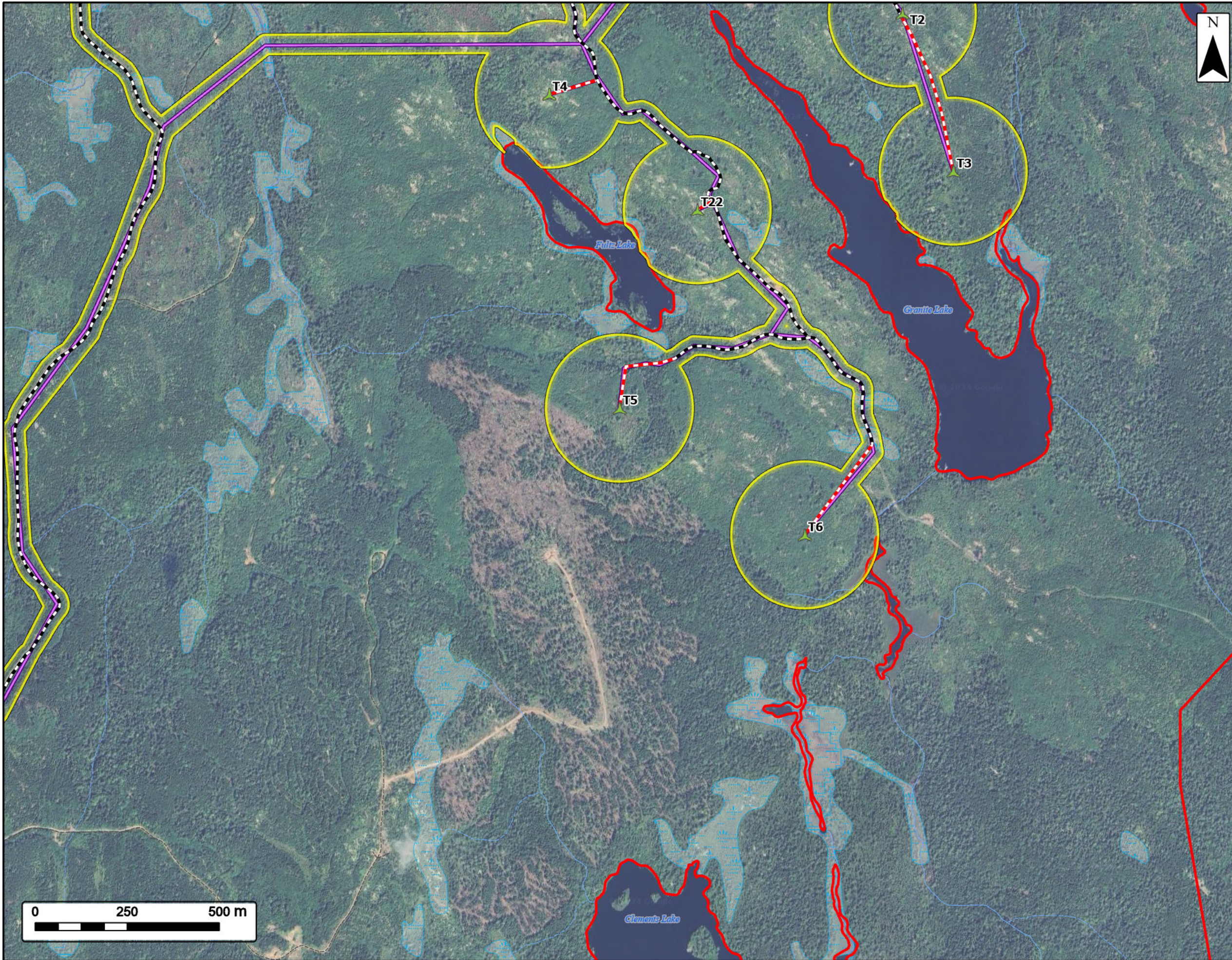


Study Area	
Assessment Area	
Proposed New Road	
Existing Road to be Upgraded	
Proposed Turbine Layout	
Proposed Transmission Line	
Proposed Collector Line	
Proposed Substation Footprint	
Proposed Laydown Area	
Transportation	
Highway	
Road	
Unpaved Road	
Utilities (Line)	
Existing Transmission Lines	
Water Features	
Mapped Stream	
Mapped Indefinite Stream	
Mapped Wetlands	



Coordinate System: NAD83 UTM Zone 20N		Sources: Google Basemaps, GeoNOVA, SNSIS, NSNRR, ACCDC, IBA Canada, CNWI, HERE, Garmin, USGS	
Date:	Nov 2024	Project #:	24-9856
Scale:	1:10,000	Drawing #:	2.3A
Drawn By:	K. Wallace		
Checked By:	H. Mosher		

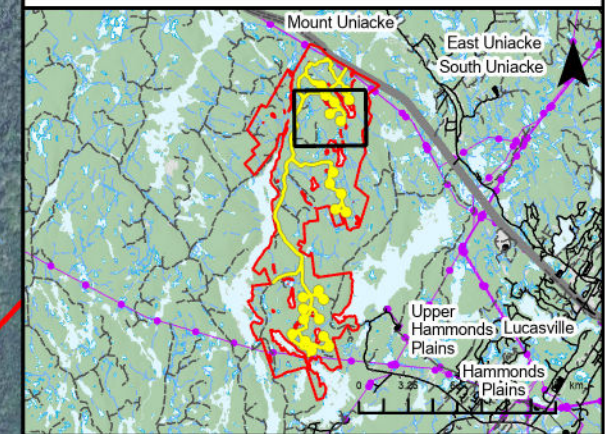




Melvin Lake Wind Project
Infrastructure



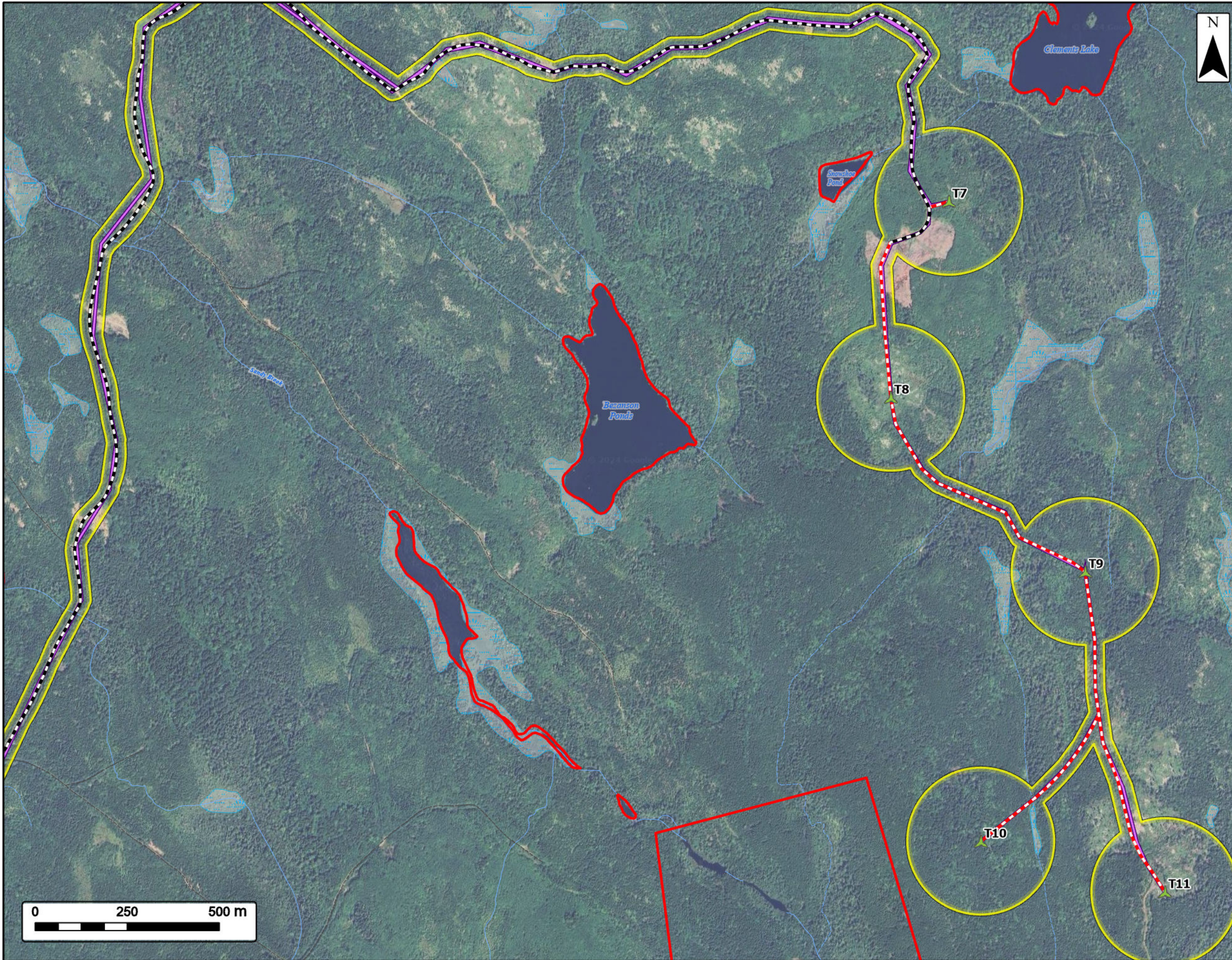
Study Area	
Assessment Area	
Proposed New Road	
Existing Road to be Upgraded	
Proposed Turbine Layout	
Proposed Collector Line	
Transportation	
Unpaved Road	
Water Features	
Mapped Stream	
Mapped Indefinite Stream	
Mapped Wetlands	



Coordinate System: NAD83 UTM Zone 20N Sources: Google Basemaps, GeoNOVA, SNSIS, NSNRR, ACCDC, IBA Canada, CNWI, HERE, Garmin, USGS

Date:	Nov 2024	Project #:	24-9856
Scale:	1:10,000	Drawing #:	2.3B
Drawn By:	K. Wallace		
Checked By:	H. Mosher		

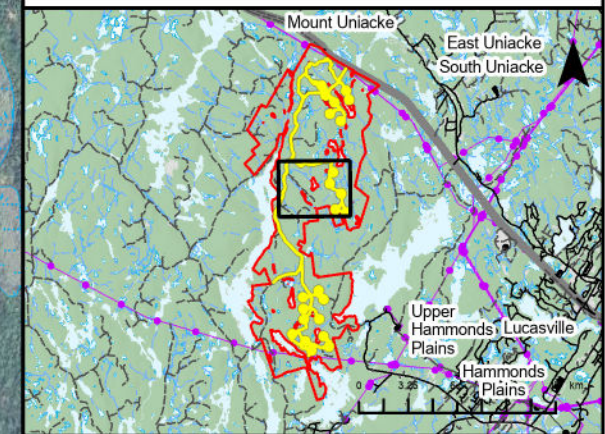




Melvin Lake Wind Project
Infrastructure



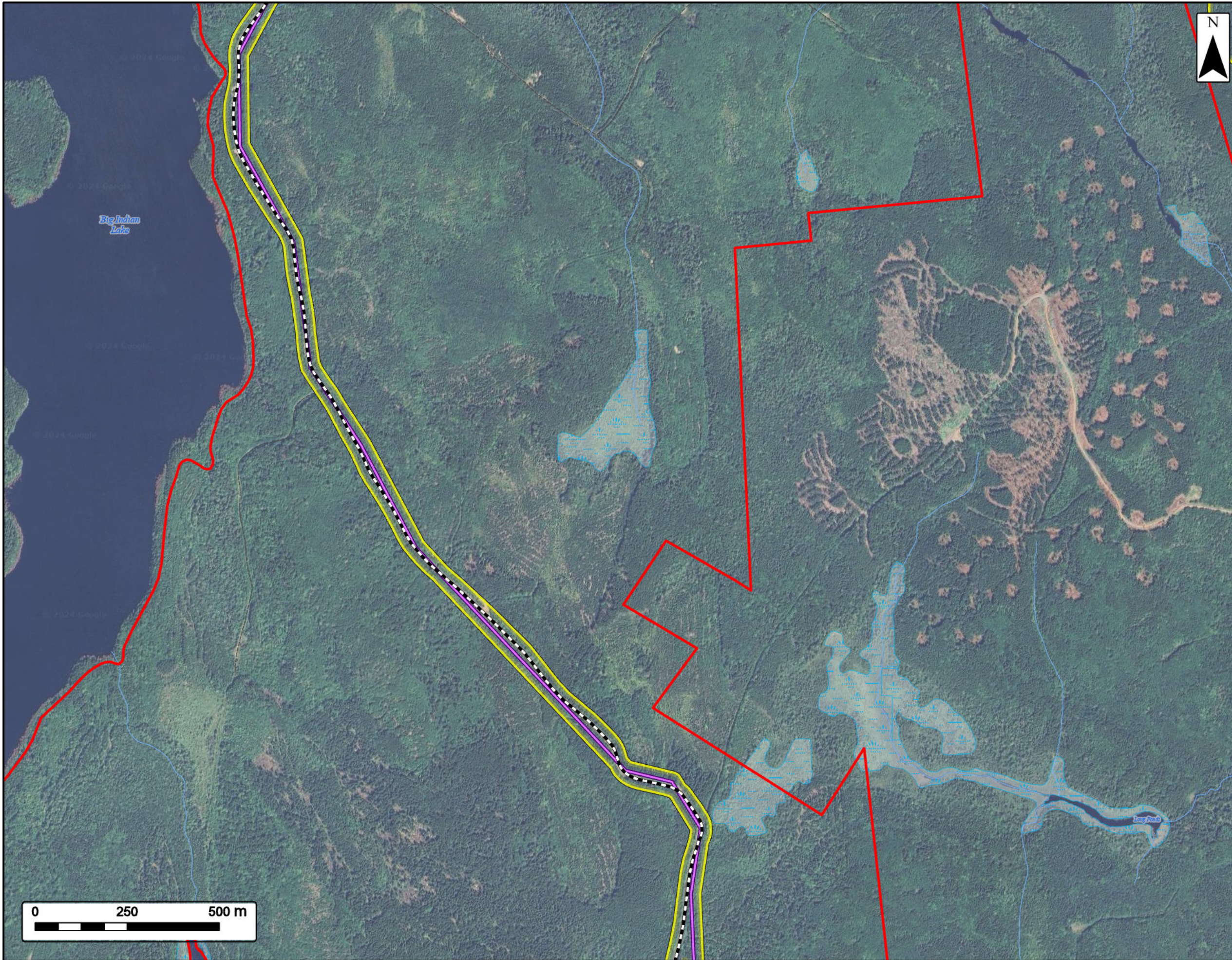
- Study Area
- Assessment Area
- Proposed New Road
- Existing Road to be Upgraded
- Proposed Turbine Layout
- Proposed Collector Line
- Transportation**
- Road
- Unpaved Road
- Water Features**
- Mapped Stream
- Mapped Indefinite Stream
- Mapped Wetlands



Coordinate System: NAD83 UTM Zone 20N Sources: Google Basemaps, GeoNOVA, SNSIS, NSNRR, ACCDC, IBA Canada, CNWI, HERE, Garmin, USGS

Date: Nov 2024	Project #: 24-9856
Scale: 1:10,000	Drawing #: 2.3C
Drawn By: K. Wallace	
Checked By: H. Mosher	

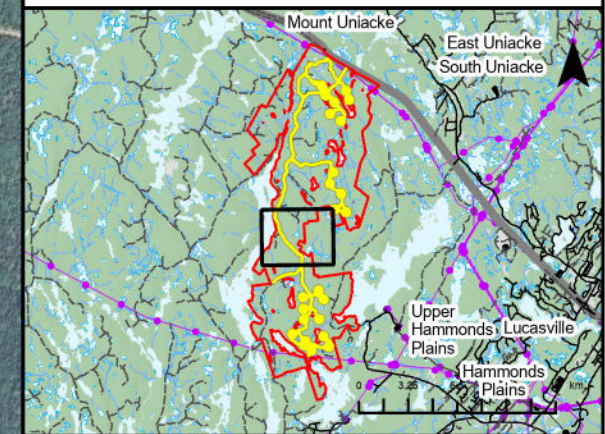




Melvin Lake Wind Project
Infrastructure

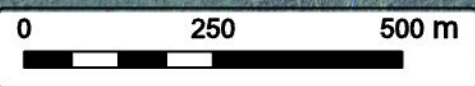


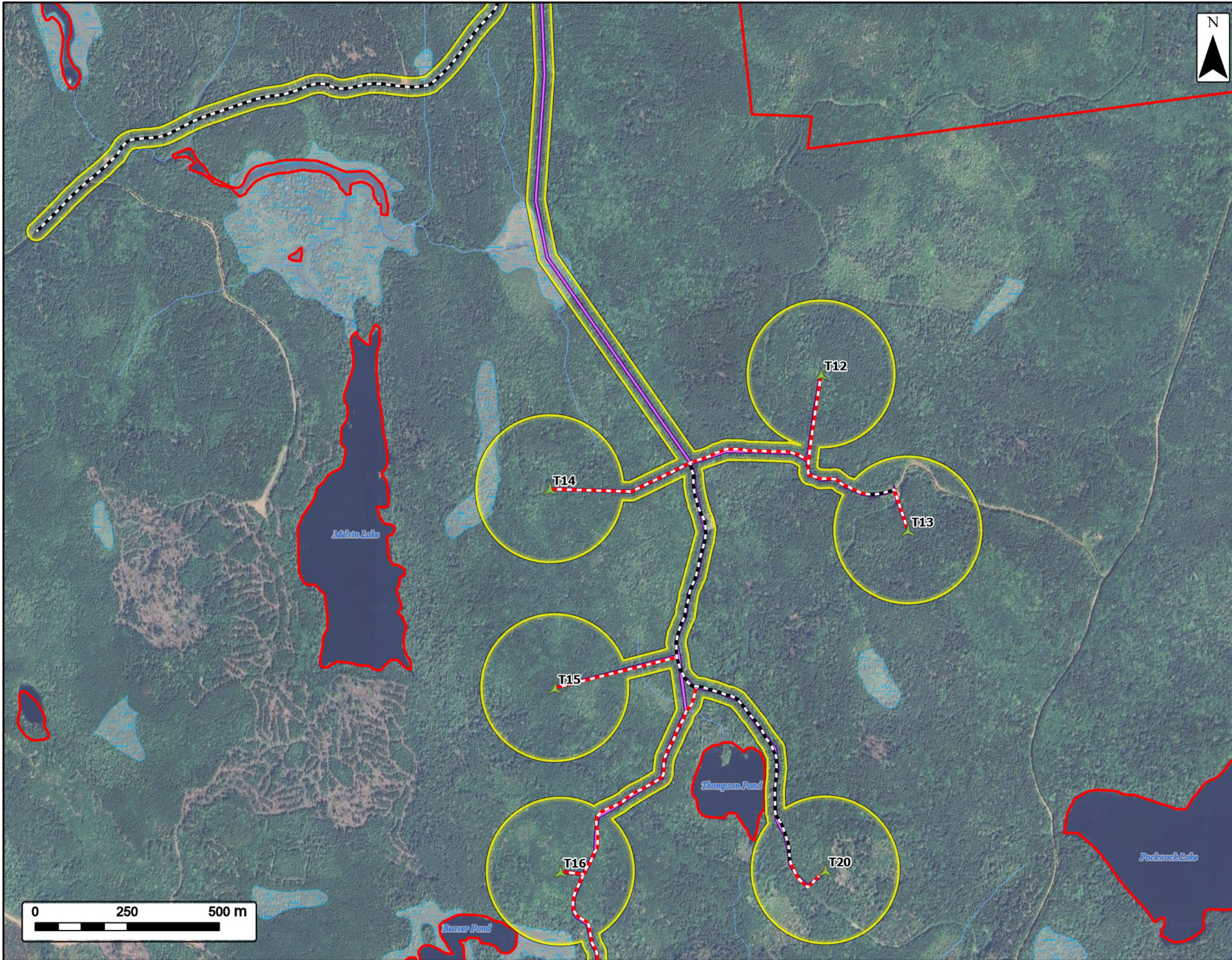
- Study Area
- Assessment Area
- Existing Road to be Upgraded
- Proposed Collector Line
- Transportation**
- Unpaved Road
- Water Features**
- Mapped Stream
- Mapped Indefinite Stream
- Mapped Wetlands



Coordinate System: NAD83 UTM Zone 20N Sources: Google Basemaps, GeoNOVA, SNSIS, NSNRR, ACCDC, IBA Canada, CNWI, HERE, Garmin, USGS

Date: Nov 2024	Project #: 24-9856
Scale: 1:10,000	Drawing #: 2.3D
Drawn By: K. Wallace	
Checked By: H. Mosher	

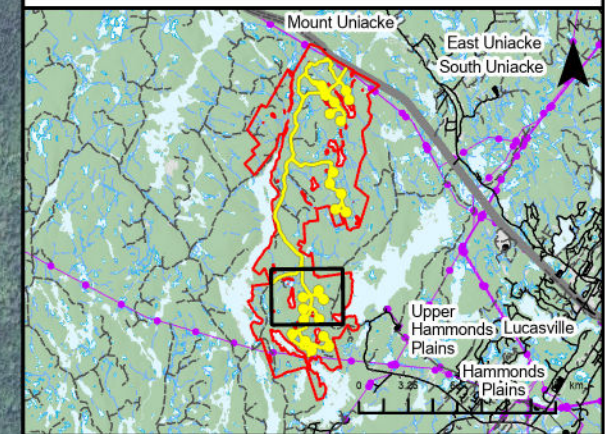




Melvin Lake Wind Project
Infrastructure



Study Area	
Assessment Area	
Proposed New Road	
Existing Road to be Upgraded	
Proposed Turbine Layout	
Proposed Collector Line	
Transportation	
Road	
Unpaved Road	
Water Features	
Mapped Stream	
Mapped Indefinite Stream	
Mapped Wetlands	



Coordinate System: NAD83 UTM Zone 20N
Sources: Google Basemaps, GeoNOVA, SNSIS, NSNRR, ACCDC, IBA Canada, CNWI, HERE, Garmin, USGS

Date: Nov 2024	Project #: 24-9856
Scale: 1:10,000	Drawing #: 2.3E
Drawn By: K. Wallace	
Checked By: H. Mosher	

