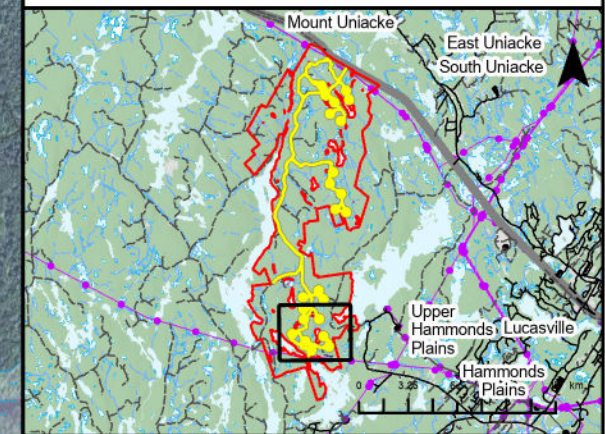


**Melvin Lake Wind Project**  
Infrastructure

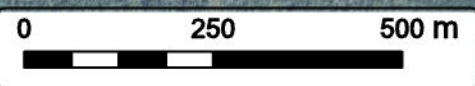


Study Area	
Assessment Area	
Proposed New Road	
Existing Road to be Upgraded	
Proposed Turbine Layout	
Proposed Collector Line	
<b>Transportation</b>	
Road	
Unpaved Road	
<b>Utilities (Line)</b>	
Existing Transmission Lines	
<b>Water Features</b>	
Mapped Stream	
Mapped Indefinite Stream	
Mapped Wetlands	



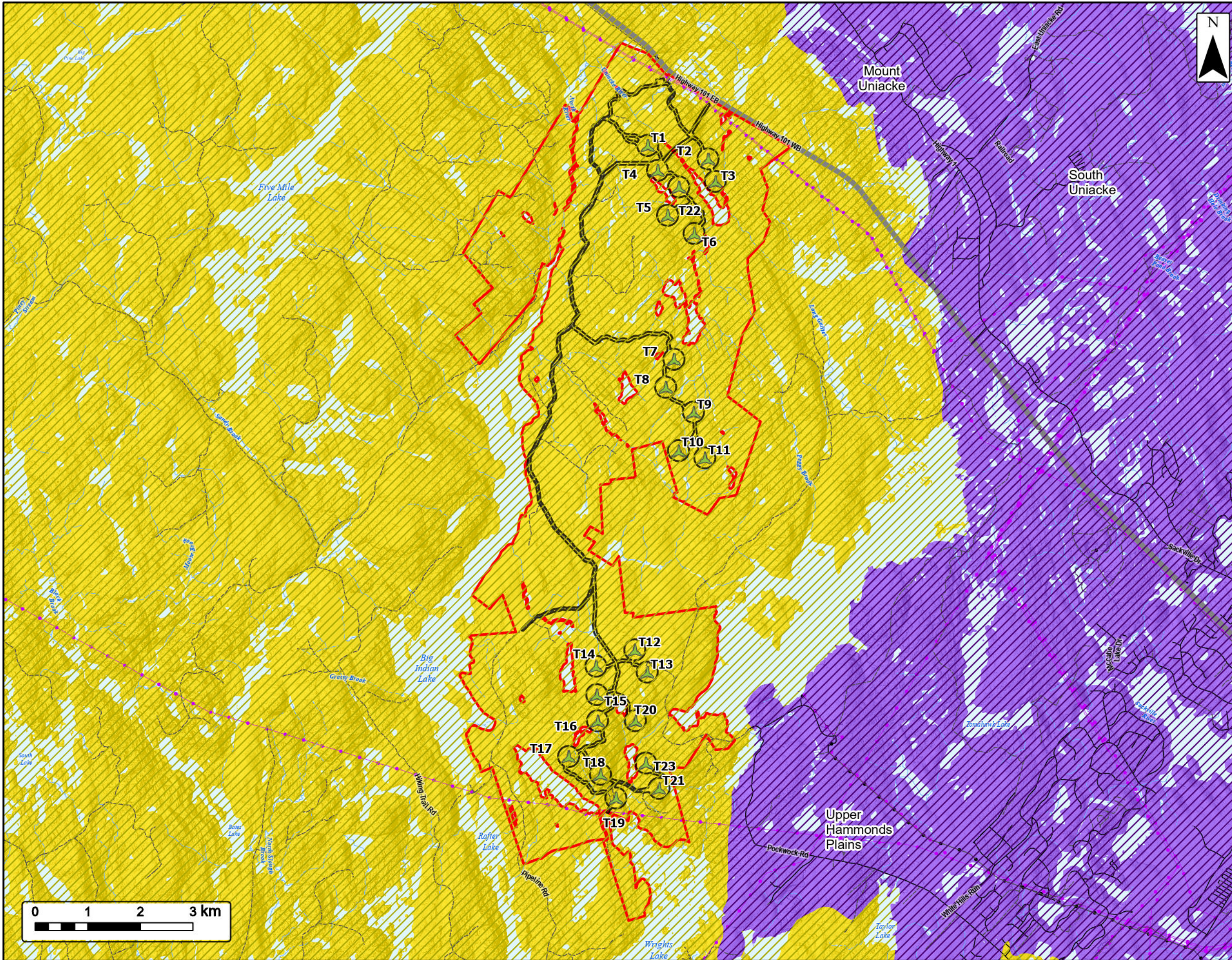
Coordinate System: NAD83 UTM Zone 20N  
Sources: Google Basemaps, GeoNOVA, SNSIS, NSNRR, ACCDC, IBA Canada, CNWI, HERE, Garmin, USGS

Date:	Nov 2024	Project #:	24-9856
Scale:	1:10,000	Drawing #:	<b>2.3F</b>
Drawn By:	K. Wallace		
Checked By:	H. Mosher		





**Melvin Lake Wind Project**  
Ecodistricts and Ecoregions



Study Area	
Assessment Area	
Proposed Turbine Layout	
<b>Ecodistricts</b>	
440 Eastern Interior	
780 St. Margaret's Bay	
<b>Ecoregions</b>	
Eastern	
Western	
<b>Utilities (Line)</b>	
Existing Pipeline	
Existing Transmission Lines	
<b>Transportation</b>	
Highway	
Road	
Unpaved Road	
<b>Water Features</b>	
Mapped Stream	
Mapped Indefinite Stream	
Mapped Lakes and Rivers	

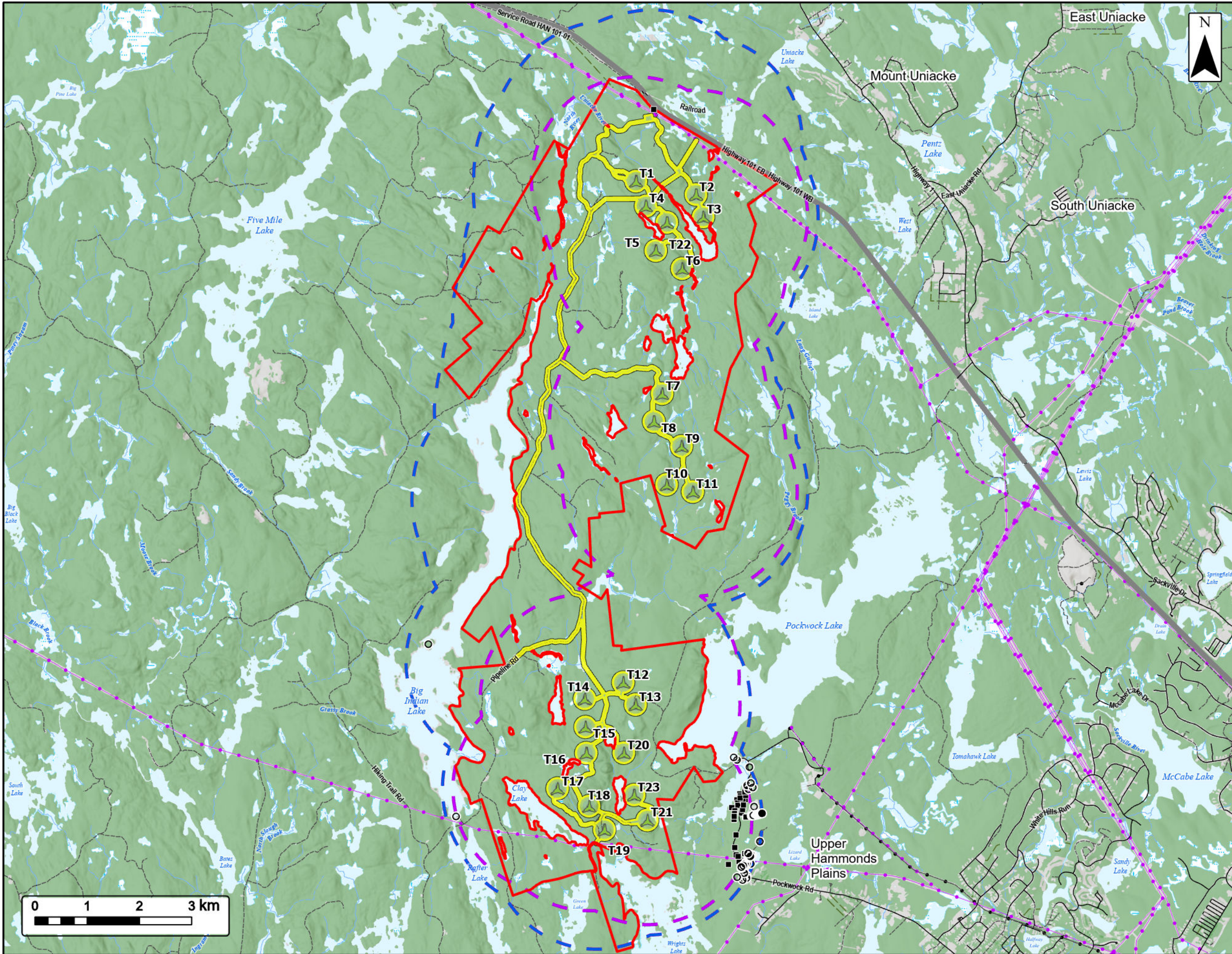


Coordinate System: NAD83 UTM Zone 20N Sources: Google Basemaps, GeoNOVA, SNSIS, NSNRR, ACCDC, IBA Canada, CNWI, HERE, Garmin, USGS

Date: Nov 2024	Project #: 24-9856
Scale: 1:70,000	Drawing #: 7.1
Drawn By: K. Wallace	7.1
Checked By: H. Mosher	







# Melvin Lake Wind Project

Receptors



- Study Area
- Assessment Area
- Proposed Turbine Layout
- Receptors within 2 km of Turbines
- Receptors within 2 km of Assessment Area
- Turbine Layout Buffer (2 km)
- Assessment Area Buffer (2 km)
- Transportation**
- Highway
- Road
- Unpaved Road
- Utilities (Line)**
- Existing Pipeline
- Existing Transmission Lines
- Water Features**
- Mapped Stream
- Mapped Indefinite Stream
- Mapped Lakes and Rivers
- Mapped Wetlands

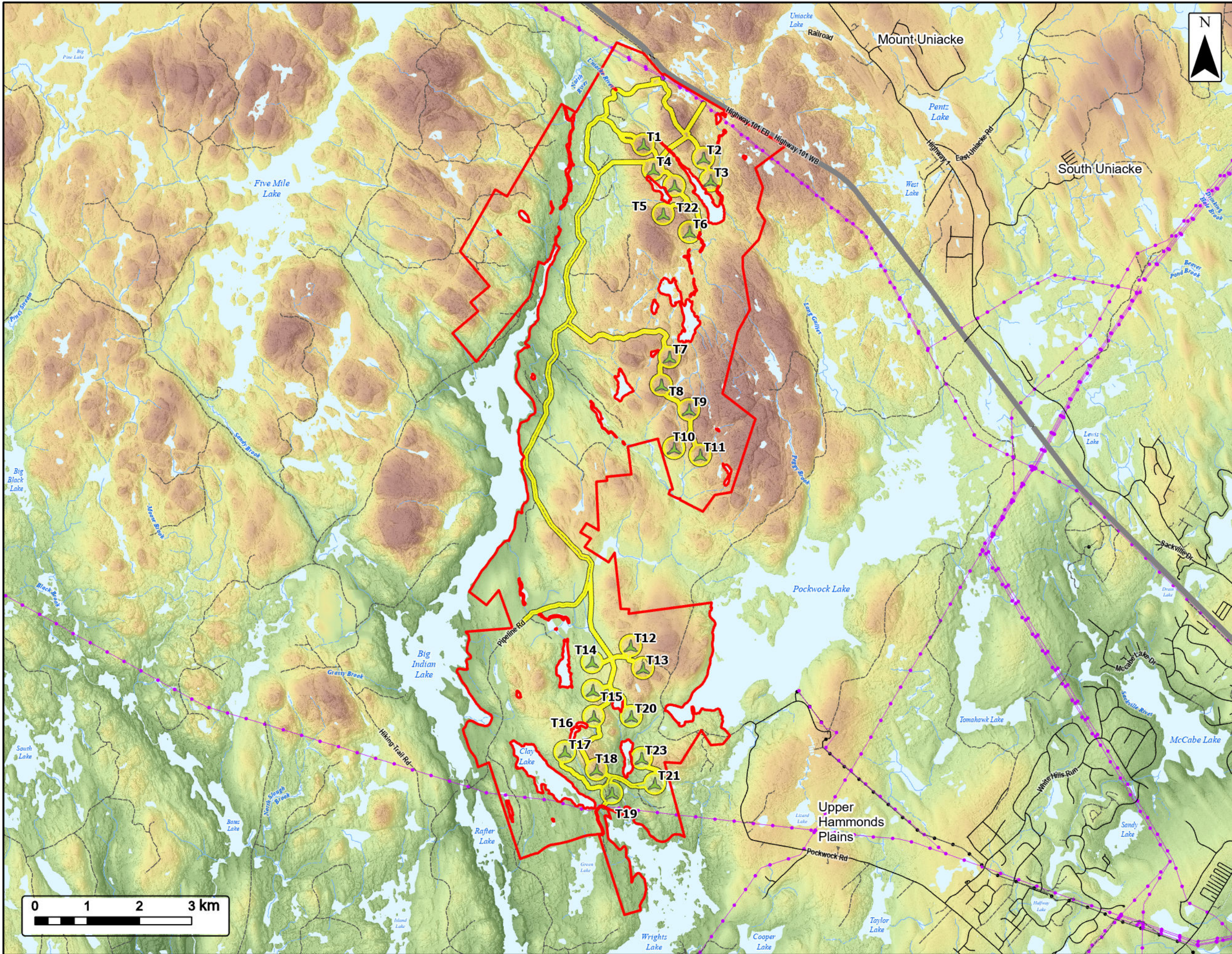


Coordinate System: NAD83 UTM Zone 20N Sources: Google Basemaps, GeoNOVA, SNSIS, NSNRR, ACCDC, IBA Canada, CNWI, HERE, Garmin, USGS

Date: Nov 2024	Project #: 24-9856
Scale: 1:70,000	<b>7.2</b>
Drawn By: K. Wallace	
Checked By: H. Mosher	







# Melvin Lake Wind Project

Geomorphology



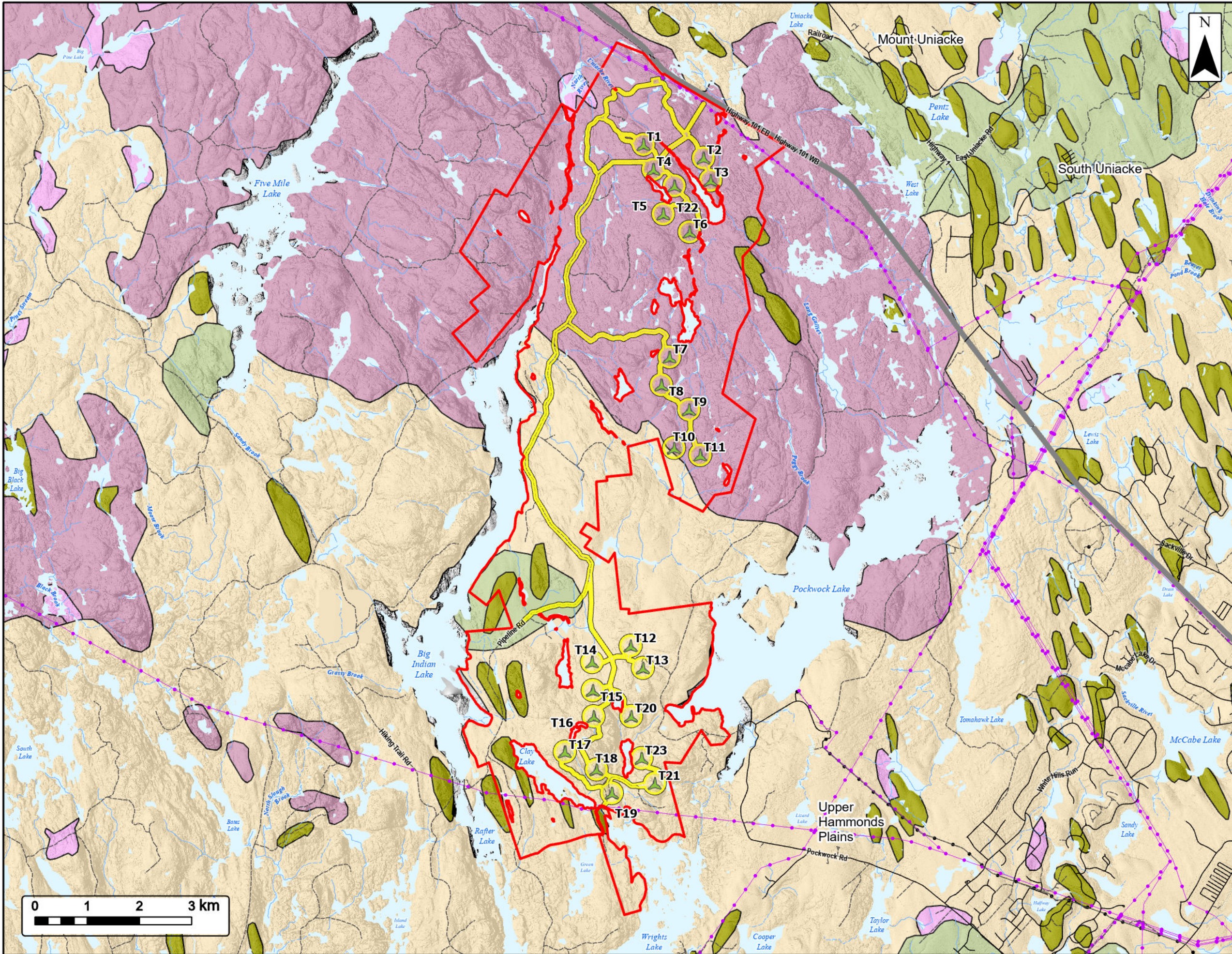
- Study Area
- Assessment Area
- Proposed Turbine Layout
- Elevation (m)**
- 230.755
- 46.05
- Transportation**
- Highway
- Road
- Unpaved Road
- Utilities (Line)**
- Existing Pipeline
- Existing Transmission Lines
- Water Features**
- Mapped Stream
- Mapped Indefinite Stream
- Mapped Lakes and Rivers



Coordinate System: NAD83 UTM Zone 20N		Sources: Google Basemaps, GeoNOVA, SNSIS, NSNRR, ACCDC, IBA Canada, CNWI, HERE, Garmin, USGS	
Date:	Nov 2024	Project #:	24-9856
Scale:	1:70,000	Drawing #:	<b>7.3</b>
Drawn By:	E. Johnson		
Checked By:	H. Mosher		







**Melvin Lake Wind Project**  
*Surficial Geology*



- Study Area
- Assessment Area
- Proposed Turbine Layout
- Surficial Geology By Unit**
- Bedrock
- Organic Deposits
- Silty Drumlin
- Silty Till Plain
- Stony Till Plain
- Transportation**
- Highway
- Road
- Unpaved Road
- Utilities (Line)**
- Existing Pipeline
- Existing Transmission Lines
- Water Features**
- Mapped Stream
- Mapped Indefinite Stream
- Mapped Lakes and Rivers

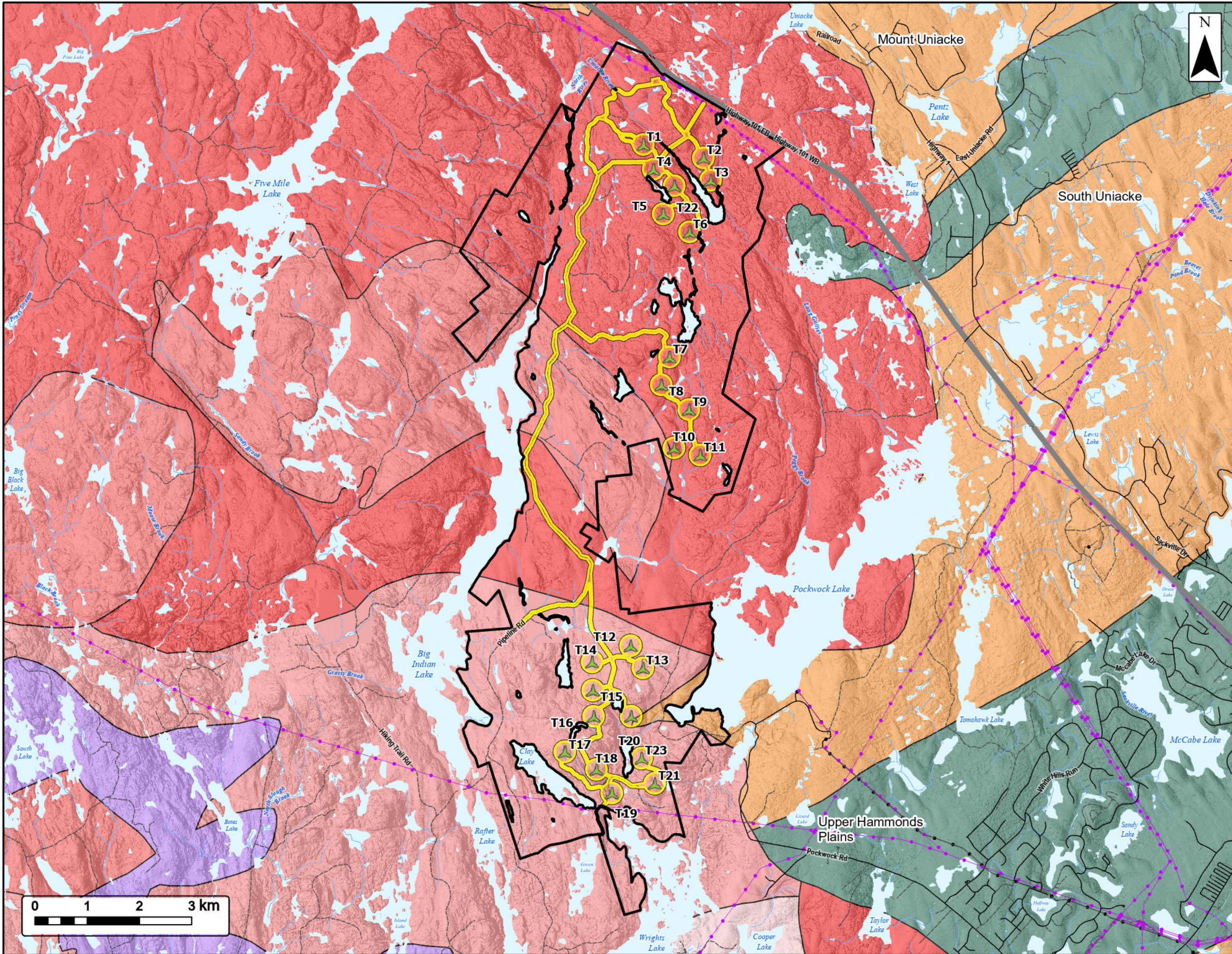


Coordinate System: NAD83 UTM Zone 20N  
 Sources: Google Basemaps, GeoNOVA, SNSIS, NSNRR, ACCDC, IBA Canada, CNWI, HERE, Garmin, USGS

Date: Nov 2024	Project #: 24-9856
Scale: 1:70,000	Drawing #:
Drawn By: E. Johnson	<b>7.4</b>
Checked By: H. Mosher	







**Melvin Lake Wind Project**  
Bedrock Geology



Study Area

Assessment Area

Proposed Turbine Layout

**Bedrock Geology By Formation**

- Halifax Formation
- Goldenville Formation
- Middle - Late Devonian Granodiorite
- Middle - Late Devonian Biotite Monzogranite
- Middle - Late Devonian muscovite biotite monzogranite
- Middle - Late Devonian leucomonzogranite
- Middle - Late Devonian fine grained leucomonzogranite

**Transportation**

- Highway
- Road
- Unpaved Road

**Utilities (Line)**

- Existing Pipeline
- Existing Transmission Lines

**Water Features**

- Mapped Stream
- Mapped Indefinite Stream
- Mapped Lakes and Rivers

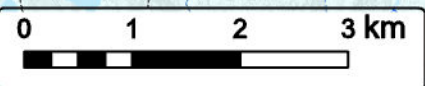
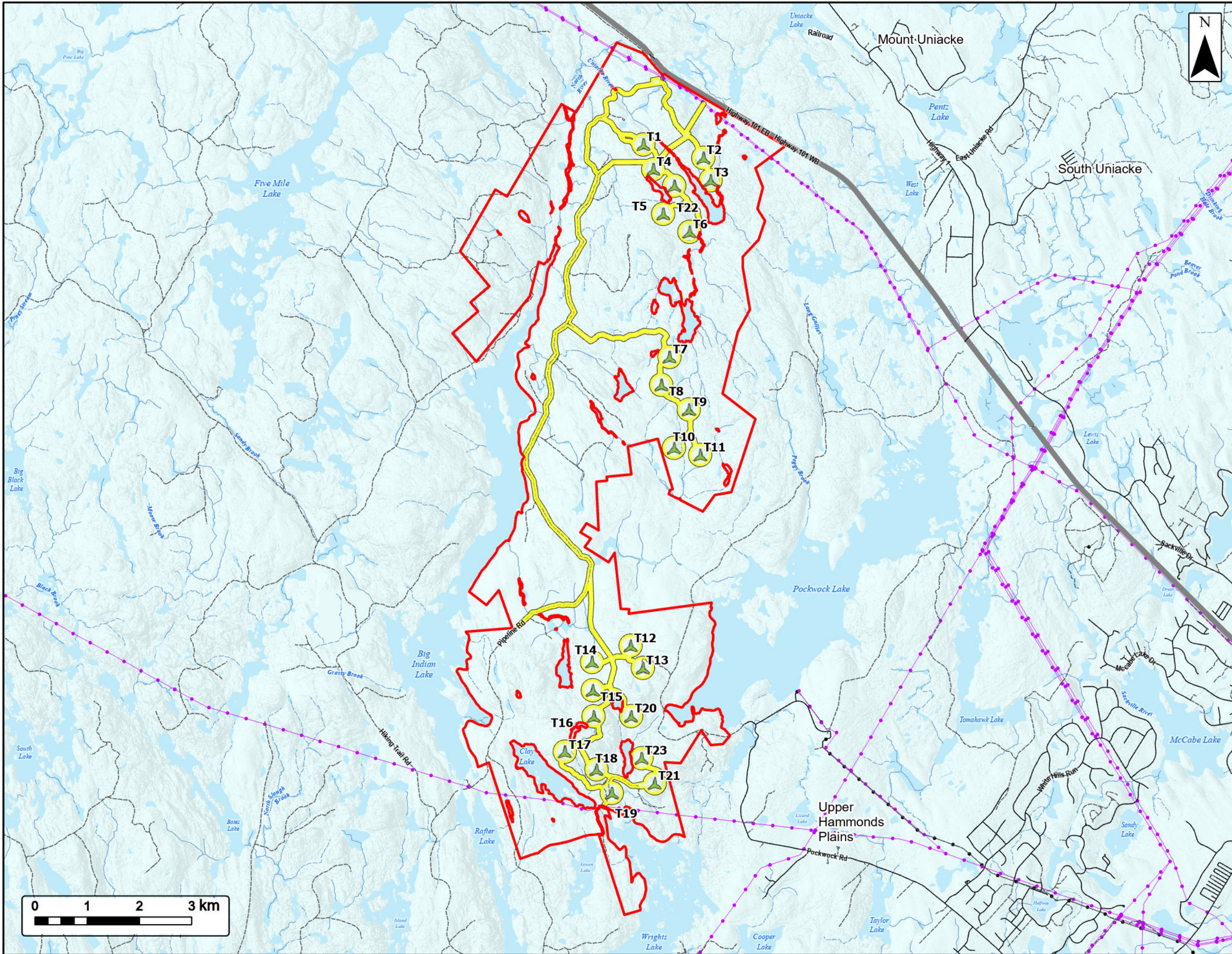


Coordinate System: NAD83 UTM Zone 20N  
Sources: Google Basemaps, GeoNOVA, SNSIS, NSNRR, ACCDC, IBA Canada, CNWI, HERE, Garmin, USGS

Date: Nov 2024	Project #: 24-9856
Scale: 1:70,000	Drawing #: <b>7.5</b>
Drawn By: E. Johnson	
Checked By: H. Mosher	







# Melvin Lake Wind Project

Karst Risk



- Study Area
- Assessment Area
- Proposed Turbine Layout
- Karst Risk**
- Low Risk
- Transportation**
- Highway
- Road
- Unpaved Road
- Utilities (Line)**
- Existing Pipeline
- Existing Transmission Lines
- Water Features**
- Mapped Stream
- Mapped Indefinite Stream
- Mapped Lakes and Rivers



Coordinate System: NAD83 UTM Zone 20N Sources: Google Basemaps, GeoNOVA, SNSIS, NSNRR, ACCDC, IBA Canada, CNWI, HERE, Garmin, USGS

Date: Nov 2024	Project #: 24-9856
Scale: 1:70,000	Drawing #: <b>7.6</b>
Drawn By: E. Johnson	<b>7.6</b>
Checked By: H. Mosher	

