

# Melvin Lake Wind Project

Protected Areas

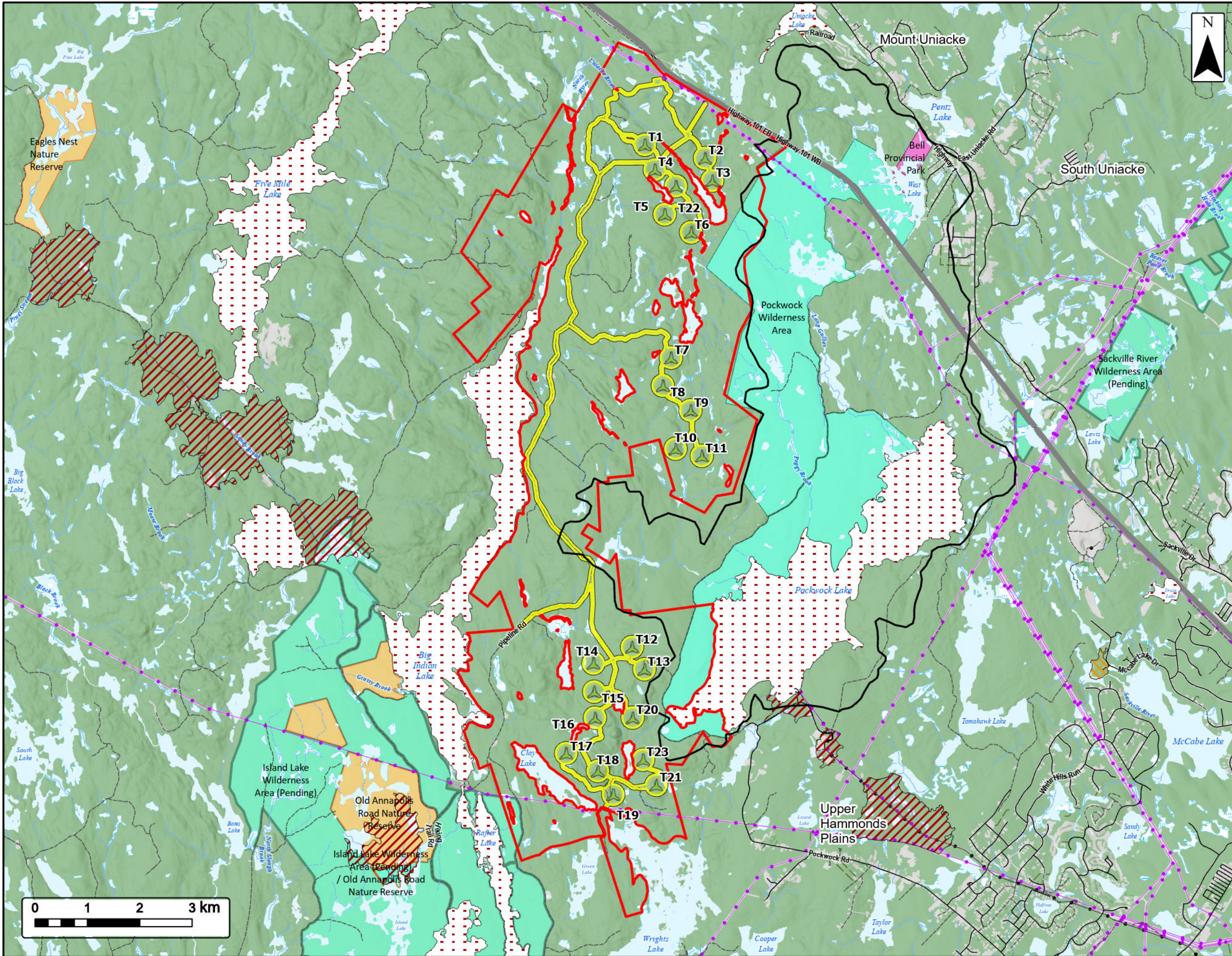


Study Area		<b>Transportation</b>	
Assessment Area		Highway	
Proposed Turbine Layout		Road	
Pockwock Watershed		Unpaved Road	
<b>NS Parks and Protected Areas</b>		<b>Utilities (Line)</b>	
Nature Reserve		Existing Pipeline	
Nature Reserve and Wilderness Area		Existing Transmission Lines	
Wilderness Area		<b>Water Features</b>	
Provincial Park		Mapped Stream	
<b>NS Lands Proposed or Pending Protection</b>		Mapped Indefinite Stream	
Wilderness Area		Mapped Lakes and Rivers	
<b>Significant Species and Habitats</b>		Mapped Wetlands	
Other Habitat			
Species at Risk			
Species of Concern			

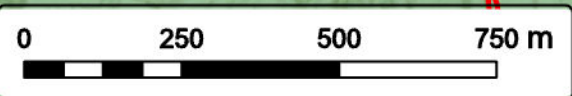
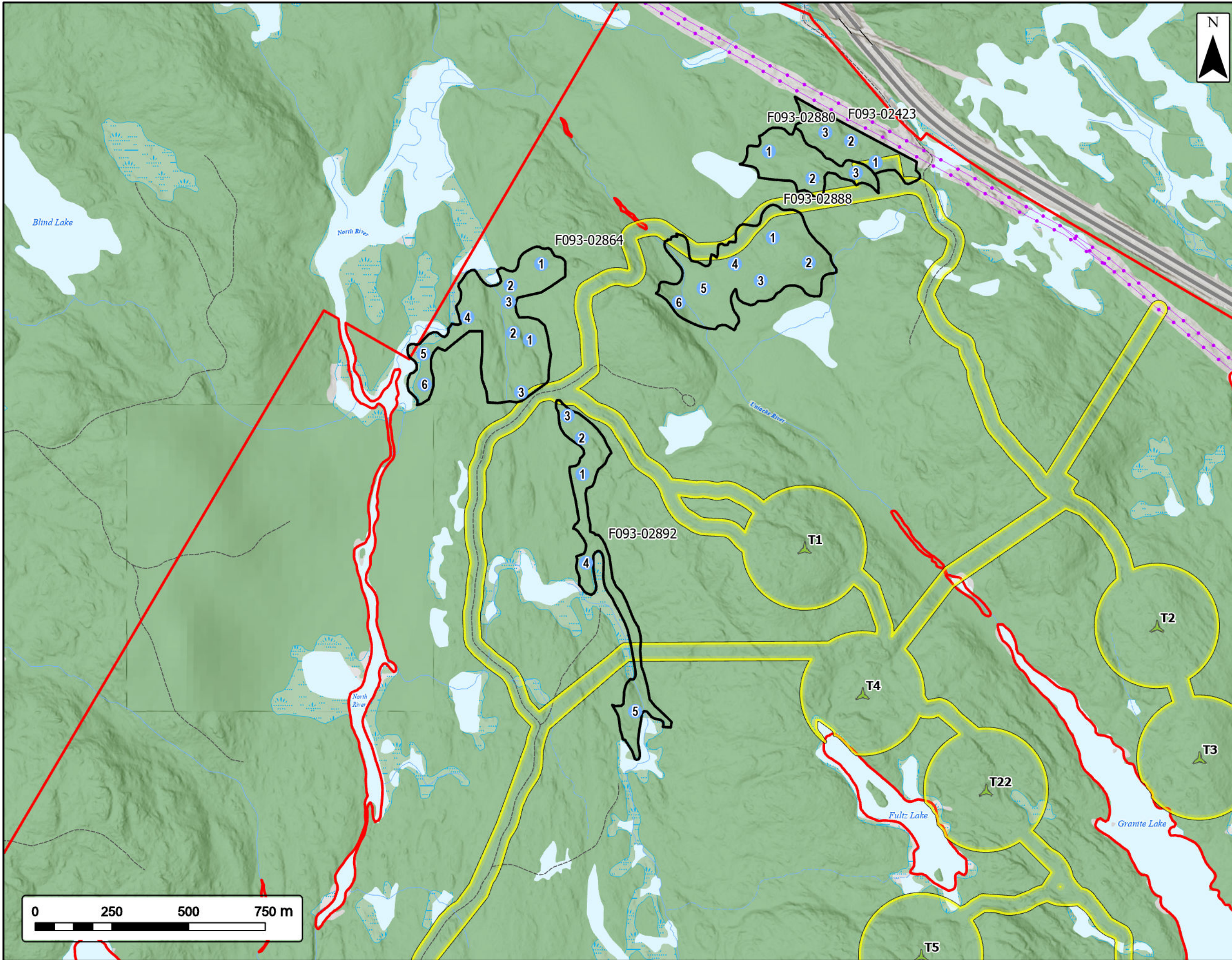


Coordinate System: NAD83 UTM Zone 20N Sources: Google Basemaps, GeoNOVA, SNSIS, NSNRR, ACCDC, IBA Canada, CNWI, HERE, Garmin, USGS

Date: Nov 2024	Project #: 24-9856
Scale: 1:70,000	Drawing #: <b>7.18</b>
Drawn By: K. Wallace	
Checked By: H. Mosher	



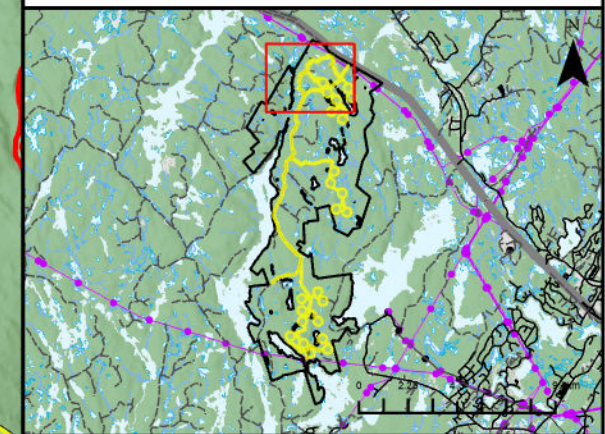




**Melvin Lake Wind Project**  
Old Growth Results



- Study Area
- Assessment Area
- Proposed Turbine Layout
- Plot Location
- Field Confirmed Not Old Growth
- Utilities (Line)**
- Existing Transmission Lines
- Transportation**
- Highway
- Road
- Unpaved Road
- Water Features**
- Mapped Stream
- Mapped Indefinite Stream
- Mapped Lakes and Rivers
- Mapped Wetlands

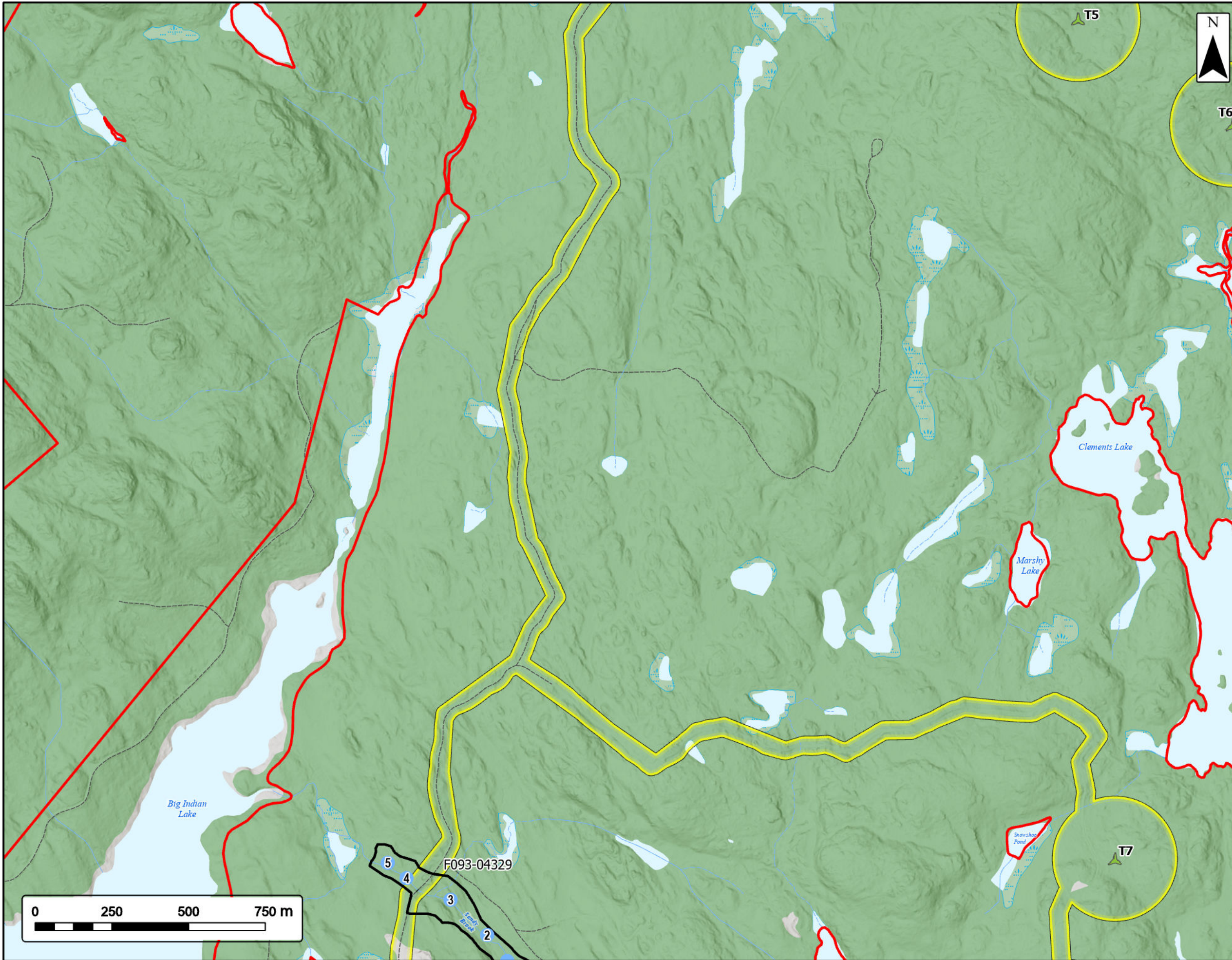


Coordinate System: NAD83 UTM Zone 20N Sources: Google Basemaps, GeoNOVA, SNSIS, NSNRR, ACCDC, IBA Canada, CNWI, HERE, Garmin, USGS

Date: Nov 2024	Project #: 24-9856
Scale: 1:12,000	Drawing #: <b>7.19A</b>
Drawn By: K. Wallace	
Checked By: H. Mosher	



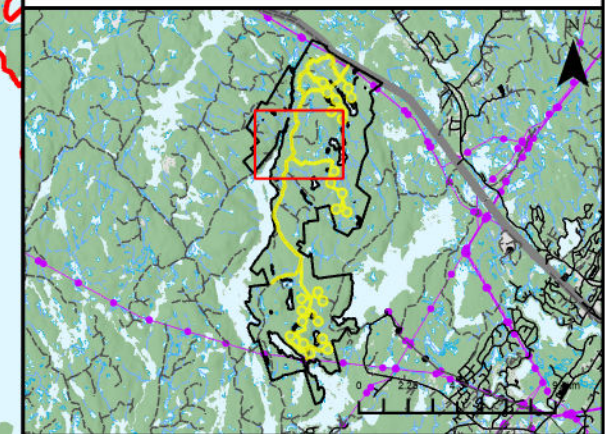




**Melvin Lake Wind Project**  
Old Growth Results

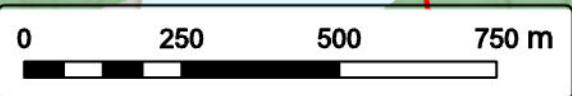


Study Area	
Assessment Area	
Proposed Turbine Layout	
Plot Location	
Field Confirmed Not Old Growth	
<b>Transportation</b>	
Road	
Unpaved Road	
<b>Water Features</b>	
Mapped Stream	
Mapped Indefinite Stream	
Mapped Lakes and Rivers	
Mapped Wetlands	

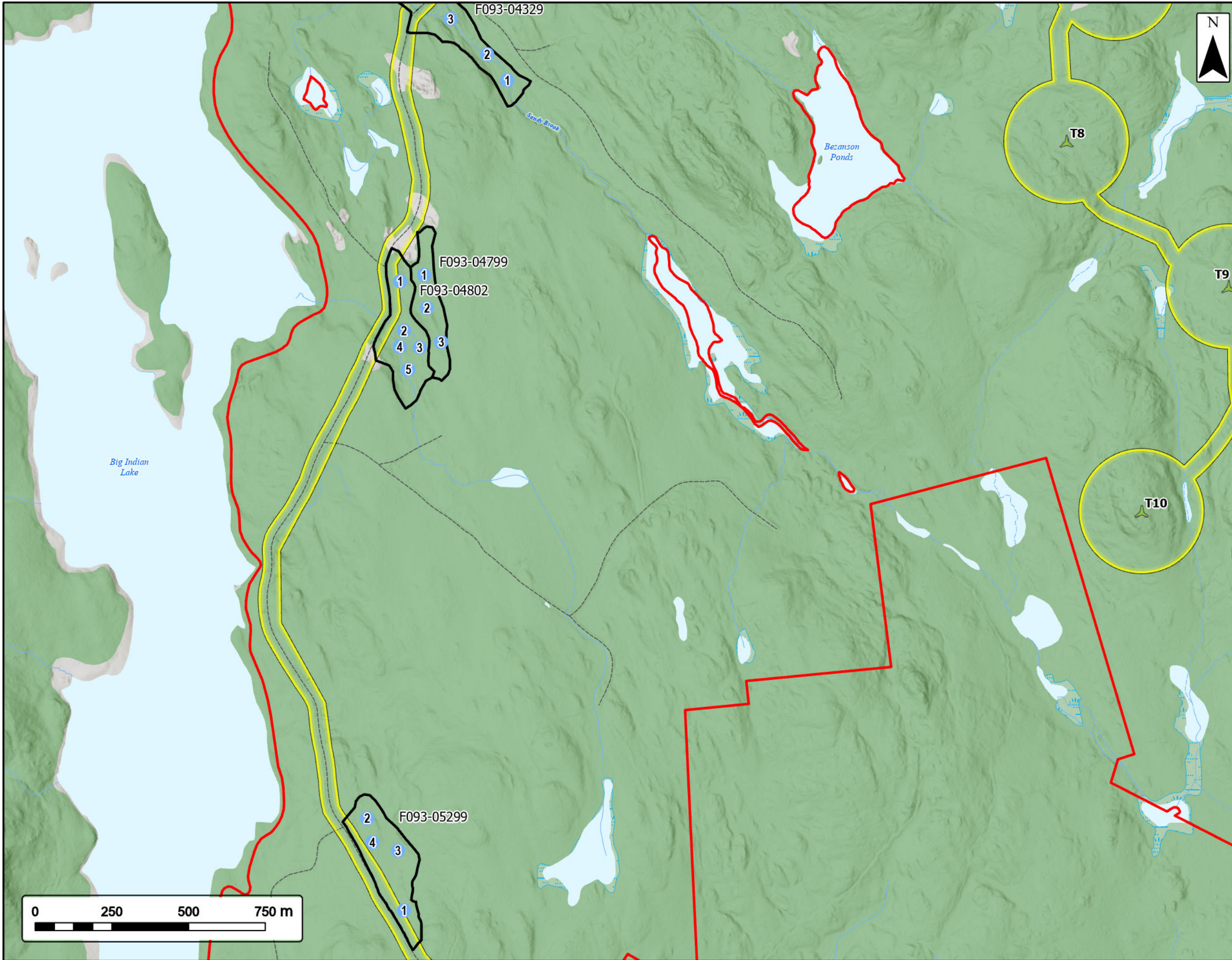


Coordinate System: NAD83 UTM Zone 20N Sources: Google Basemaps, GeoNOVA, SNSIS, NSNRR, ACCDC, IBA Canada, CNWI, HERE, Garmin, USGS

Date: Nov 2024	Project #: 24-9856
Scale: 1:12,000	Drawing #: <b>7.19B</b>
Drawn By: K. Wallace	
Checked By: H. Mosher	



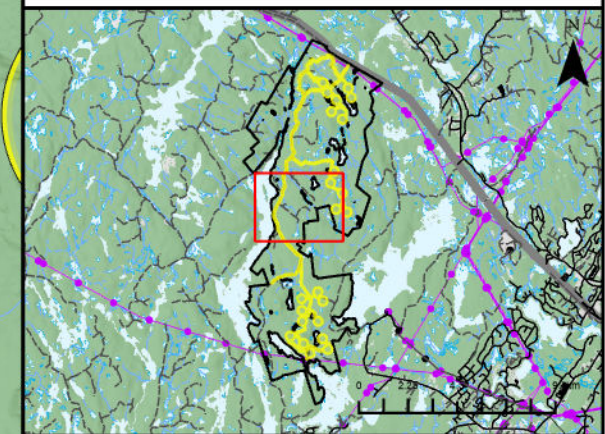




**Melvin Lake Wind Project**  
Old Growth Results



- Study Area
- Assessment Area
- Proposed Turbine Layout
- Plot Location
- Field Confirmed Not Old Growth
- Transportation**
- Road
- Unpaved Road
- Water Features**
- Mapped Stream
- Mapped Indefinite Stream
- Mapped Lakes and Rivers
- Mapped Wetlands

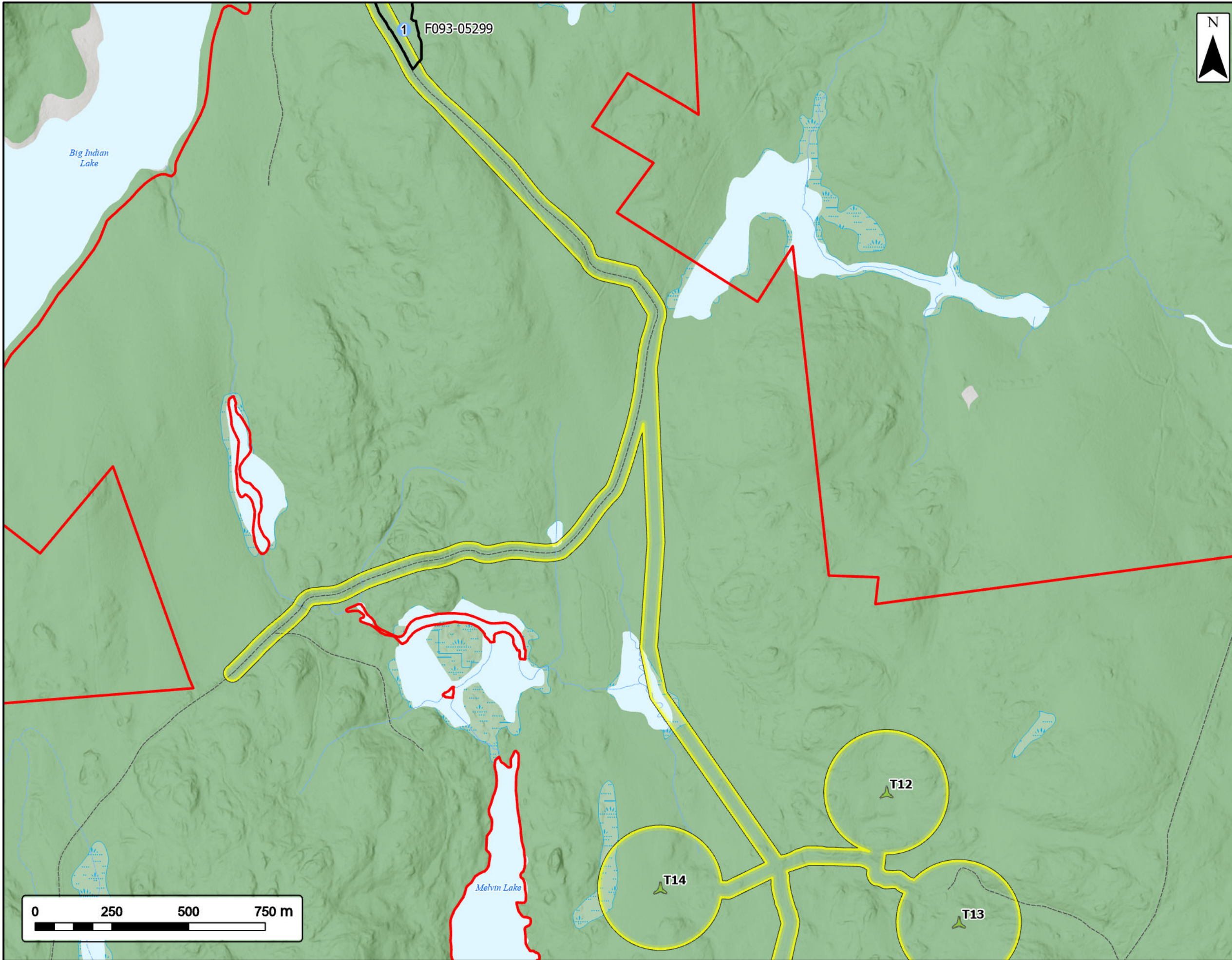


Coordinate System: NAD83 UTM Zone 20N Sources: Google Basemaps, GeoNOVA, SNSIS, NSNRR, ACCDC, IBA Canada, CNWI, HERE, Garmin, USGS

Date: Nov 2024	Project #: 24-9856
Scale: 1:12,000	Drawing #: <b>7.19C</b>
Drawn By: K. Wallace	
Checked By: H. Mosher	







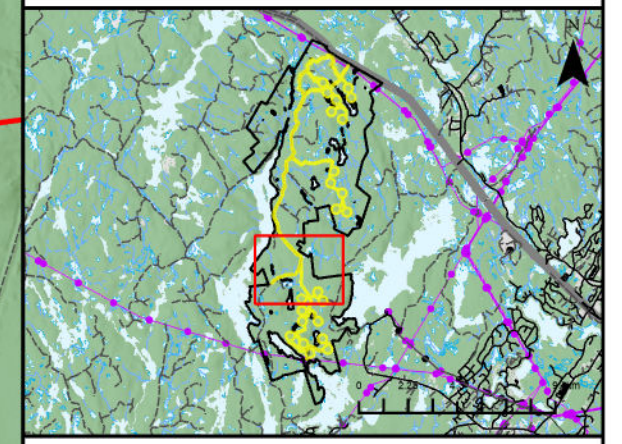
1 F093-05299



**Melvin Lake Wind Project**  
Old Growth Results



Study Area	
Assessment Area	
Proposed Turbine Layout	
Plot Location	
Field Confirmed Not Old Growth	
<b>Transportation</b>	
Road	
Unpaved Road	
<b>Water Features</b>	
Mapped Stream	
Mapped Indefinite Stream	
Mapped Lakes and Rivers	
Mapped Wetlands	

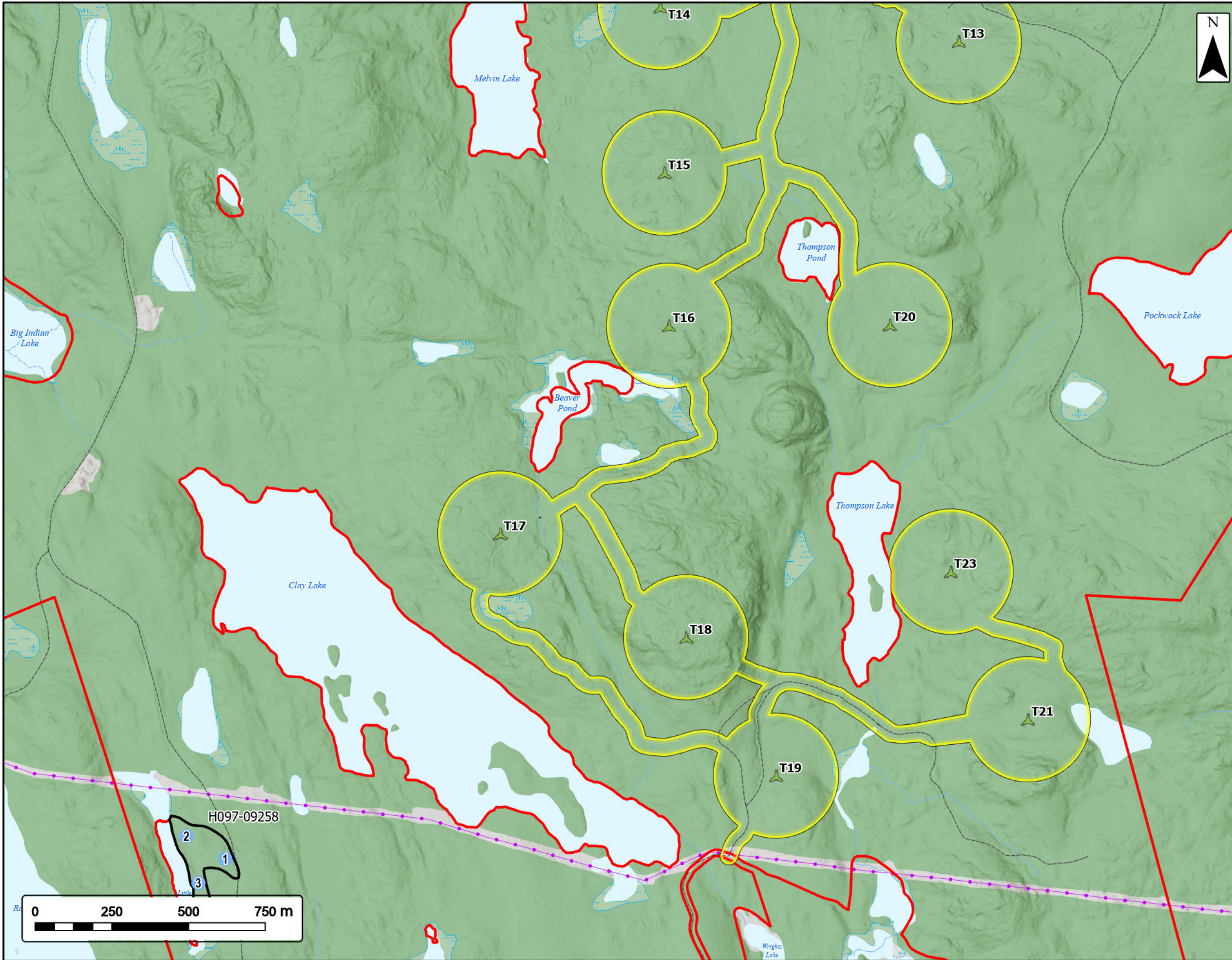


Coordinate System: NAD83 UTM Zone 20N Sources: Google Basemaps, GeoNOVA, SNSIS, NSNRR, ACCDC, IBA Canada, CNWI, HERE, Garmin, USGS

Date:	Nov 2024	Project #:	24-9856
Scale:	1:12,000	Drawing #:	<b>7.19D</b>
Drawn By:	K. Wallace		
Checked By:	H. Mosher		



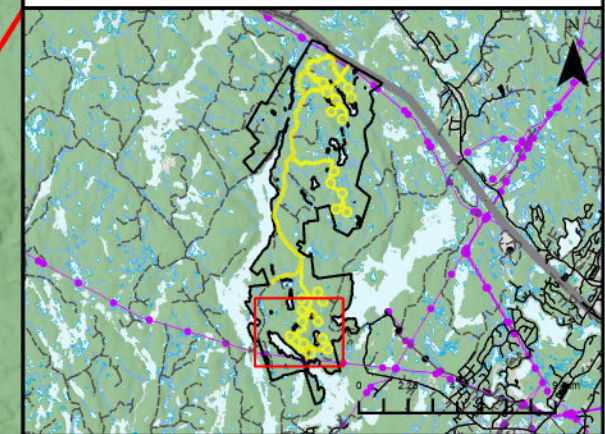




**Melvin Lake Wind Project**  
Old Growth Results



Study Area	
Assessment Area	
Proposed Turbine Layout	
Plot Location	
Field Confirmed Not Old Growth	
<b>Utilities (Line)</b>	
Existing Transmission Lines	
<b>Transportation</b>	
Road	
Unpaved Road	
<b>Water Features</b>	
Mapped Stream	
Mapped Indefinite Stream	
Mapped Lakes and Rivers	
Mapped Wetlands	

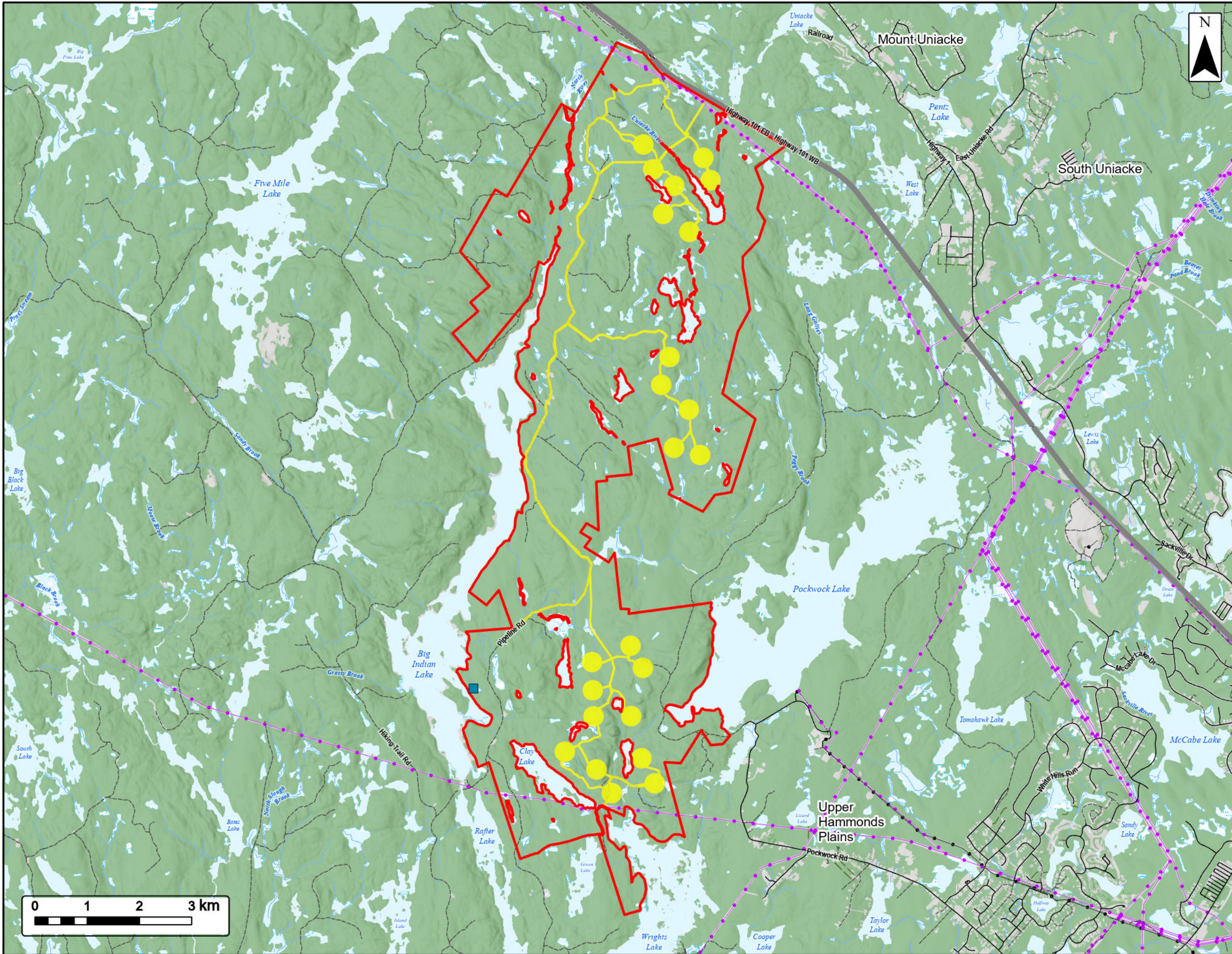


Coordinate System: NAD83 UTM Zone 20N Sources: Google Basemaps, GeoNOVA, SNSIS, NSNRR, ACCDC, IBA Canada, CNWI, HERE, Garmin, USGS

Date: Nov 2024	Project #: 24-9856
Scale: 1:12,000	Drawing #: <b>7.19E</b>
Drawn By: K. Wallace	
Checked By: H. Mosher	







**Melvin Lake Wind Project**  
Flora Desktop



Study Area	
Assessment Area	
ACCDC Pt. Data	
Nonvascular Flora	
<b>Utilities (Line)</b>	
Existing Pipeline	
Existing Transmission Lines	
<b>Transportation</b>	
Highway	
Road	
Unpaved Road	
Mapped Lakes and Rivers	
Mapped Wetlands	

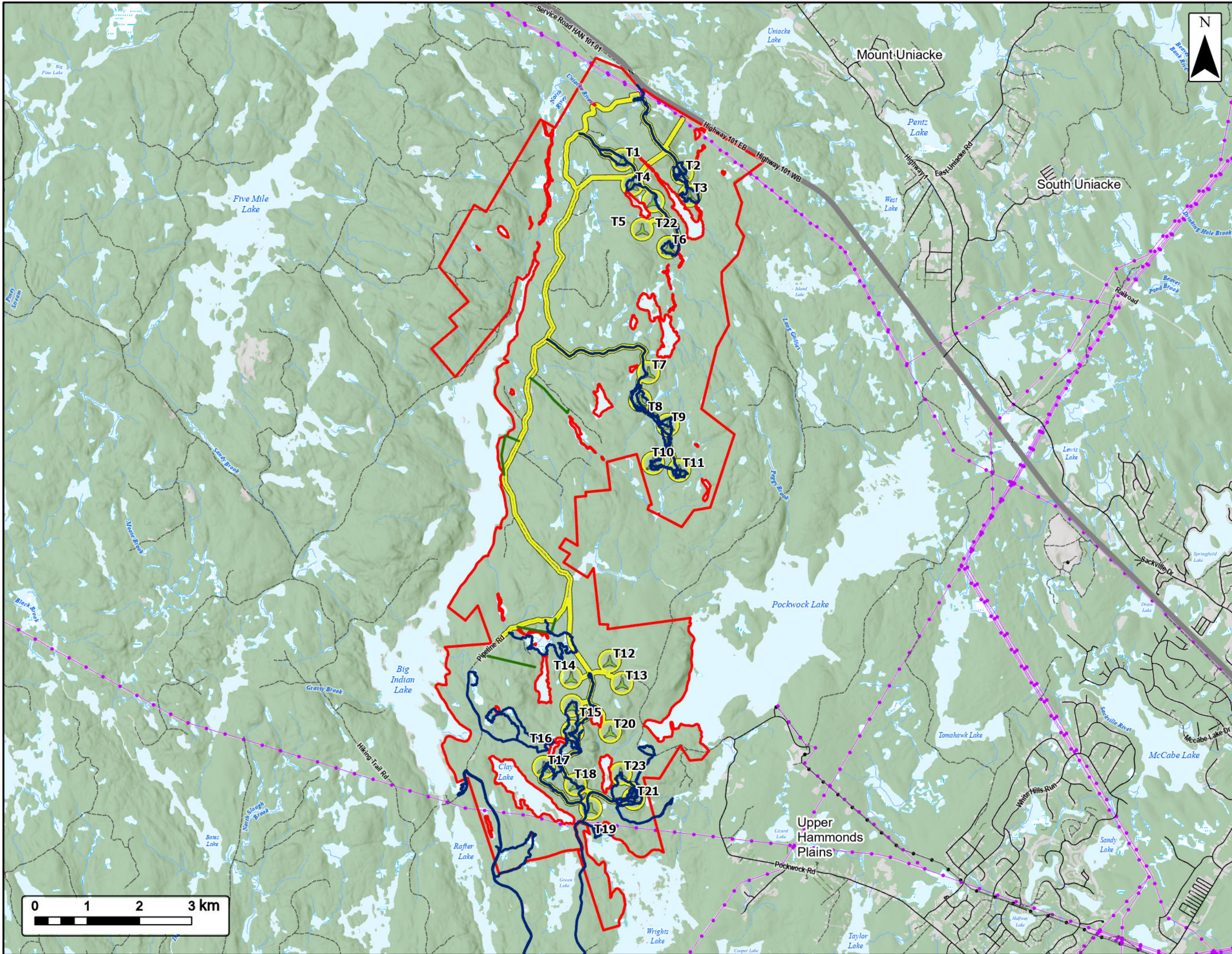


Coordinate System: NAD83 UTM Zone 20N Sources: ESRI Basemaps, GeoNOVA, SNSIS, NSNRR, ACCDC, IBA Canada, CNWI, HERE, Garmin, USGS

Date:	Nov 2024	Project #:	24-9856
Scale:	1:70,000	Drawing #:	<b>7.20</b>
Drawn By:	K. Wallace		
Checked By:	H. Mosher		







**Melvin Lake Wind Project**  
Flora Methodology



- Study Area
- Assessment Area
- Proposed Turbine Layout
- Transects (2024)
- Transects (2022)
- Utilities (Line)**
- Existing Pipeline
- Existing Transmission Lines
- Transportation**
- Highway
- Road
- Unpaved Road
- Water Features**
- Mapped Stream
- Mapped Indefinite Stream
- Mapped Lakes and Rivers
- Mapped Wetlands

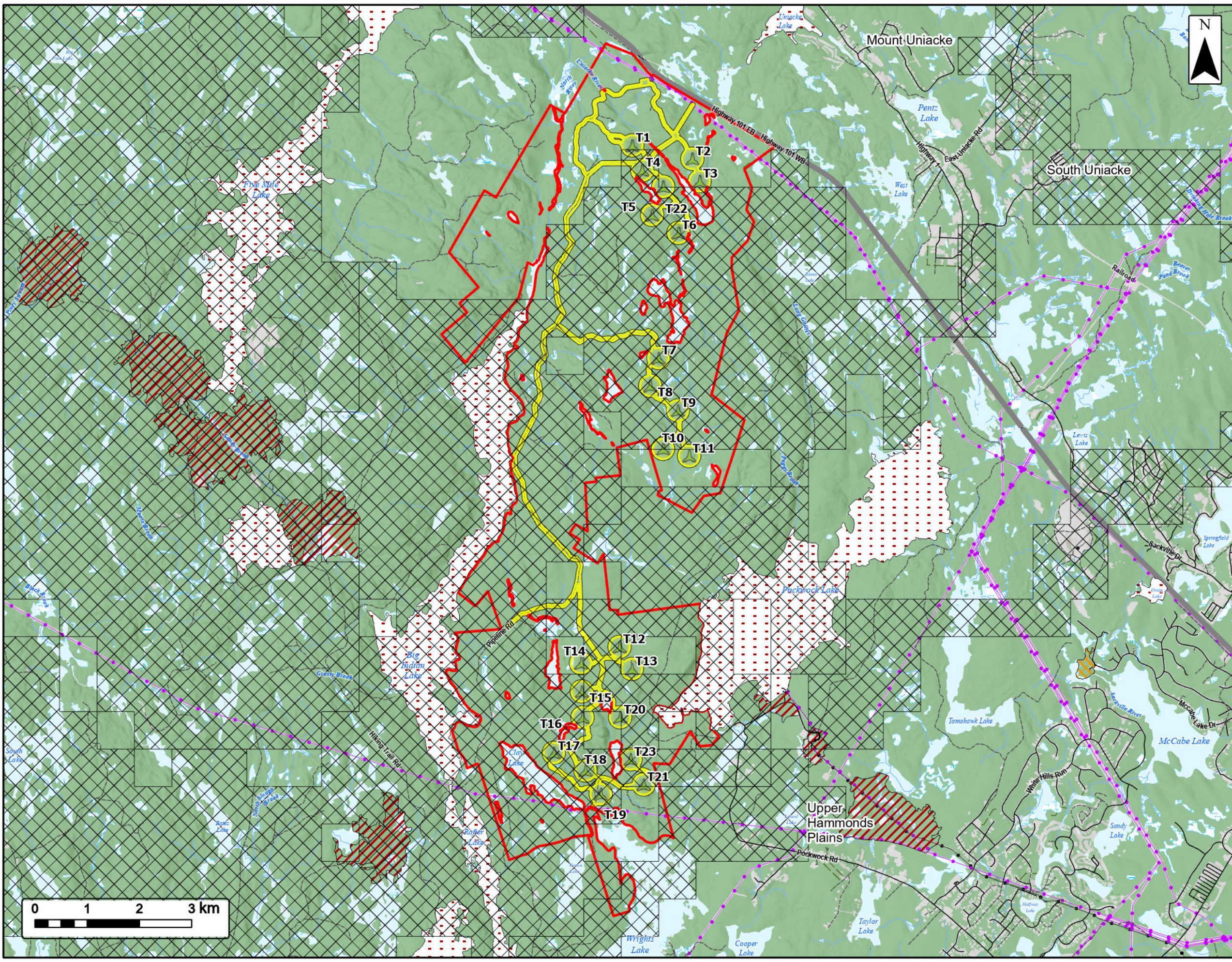


Coordinate System: NAD83 UTM Zone 20N		Sources: ESRI Basemaps, GeoNOVA, SNSIS, NSNRR, ACCDC, IBA Canada, CNWI, HERE, Garmin, USGS	
Date:	Nov 2024	Project #:	24-9856
Scale:	1:70,000	Drawing #:	<b>7.21</b>
Drawn By:	K. Wallace		
Checked By:	H. Mosher		





**Melvin Lake Wind Project**  
Fauna Desktop



- Study Area
- Assessment Area
- Proposed Turbine Layout
- Mainland Moose Core Habitat
- Significant Species and Habitats**
- Other Habitat
- Species at Risk
- Species of Concern
- Utilities (Line)**
- Existing Pipeline
- Existing Transmission Lines
- Transportation**
- Highway
- Road
- Unpaved Road
- Water Features**
- Mapped Stream
- Mapped Indefinite Stream
- Mapped Lakes and Rivers
- Mapped Wetlands



Coordinate System: NAD83 UTM Zone 20N Sources: ESRI Basemaps, GeoNOVA, SNSIS, NSNRR, ACCDC, IBA Canada, CNWI, HERE, Garmin, USGS

Date: Nov 2024	Project #: 24-9856
Scale: 1:70,000	Drawing #: <b>7.22</b>
Drawn By: K. Wallace	<b>7.22</b>
Checked By: H. Mosher	

