

# Melvin Lake Wind Project

## Fauna Methodology

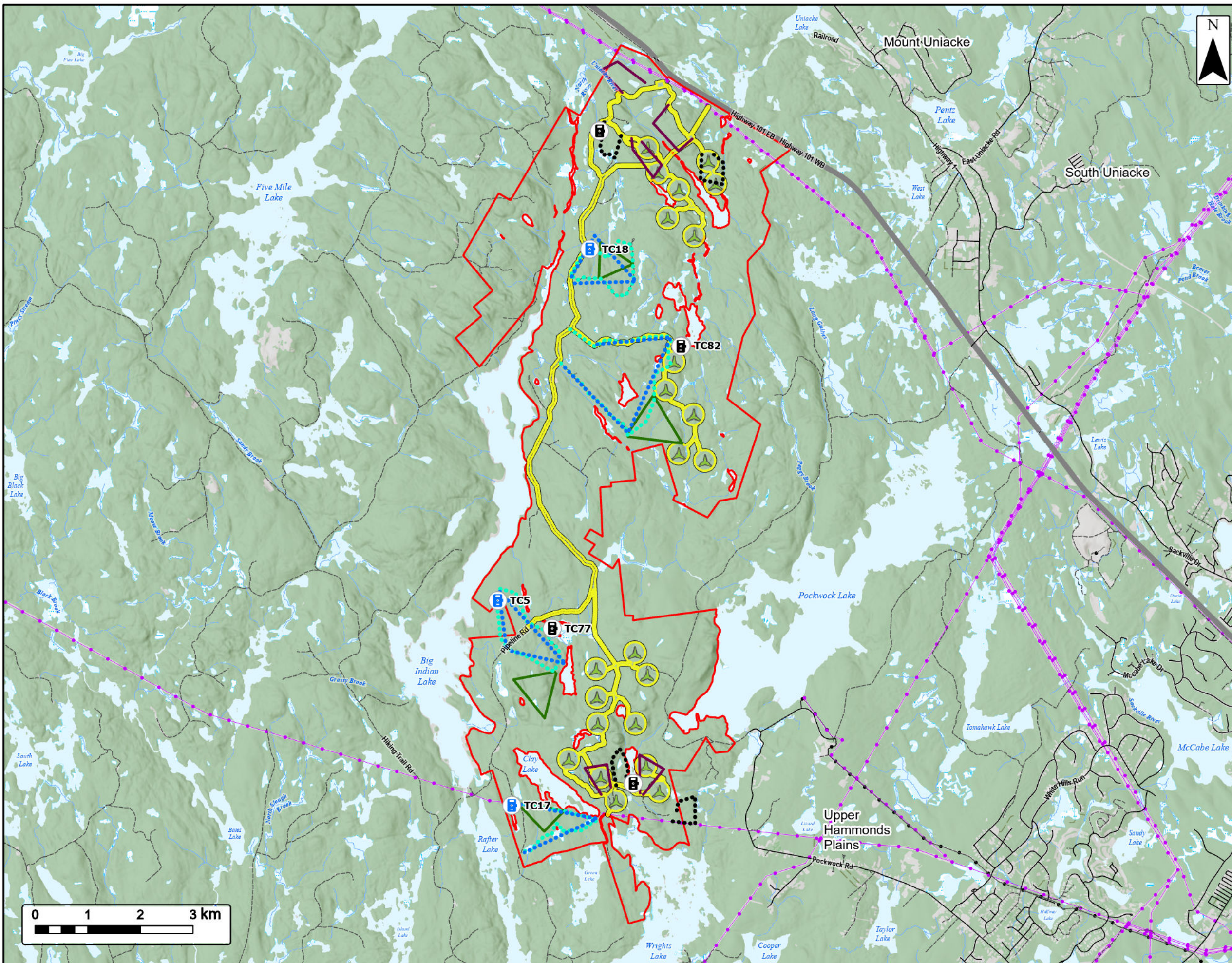


Study Area		<b>Utilities (Line)</b>	
Assessment Area		Existing Pipeline	
Proposed Turbine Layout		Existing Transmission Lines	
Trail Camera Location (2022)		<b>Transportation</b>	
Trail Camera Location (2024)		Highway	
Pellet Group Inventory Transects (2022)		Road	
Pellet Group Inventory (2023)		Unpaved Road	
Pellet Group Inventory (2024)		<b>Water Features</b>	
Winter Tracking Transects (2022/2023)		Mapped Stream	
Winter Tracking Transects (2024)		Mapped Indefinite Stream	
		Mapped Lakes and Rivers	
		Mapped Wetlands	

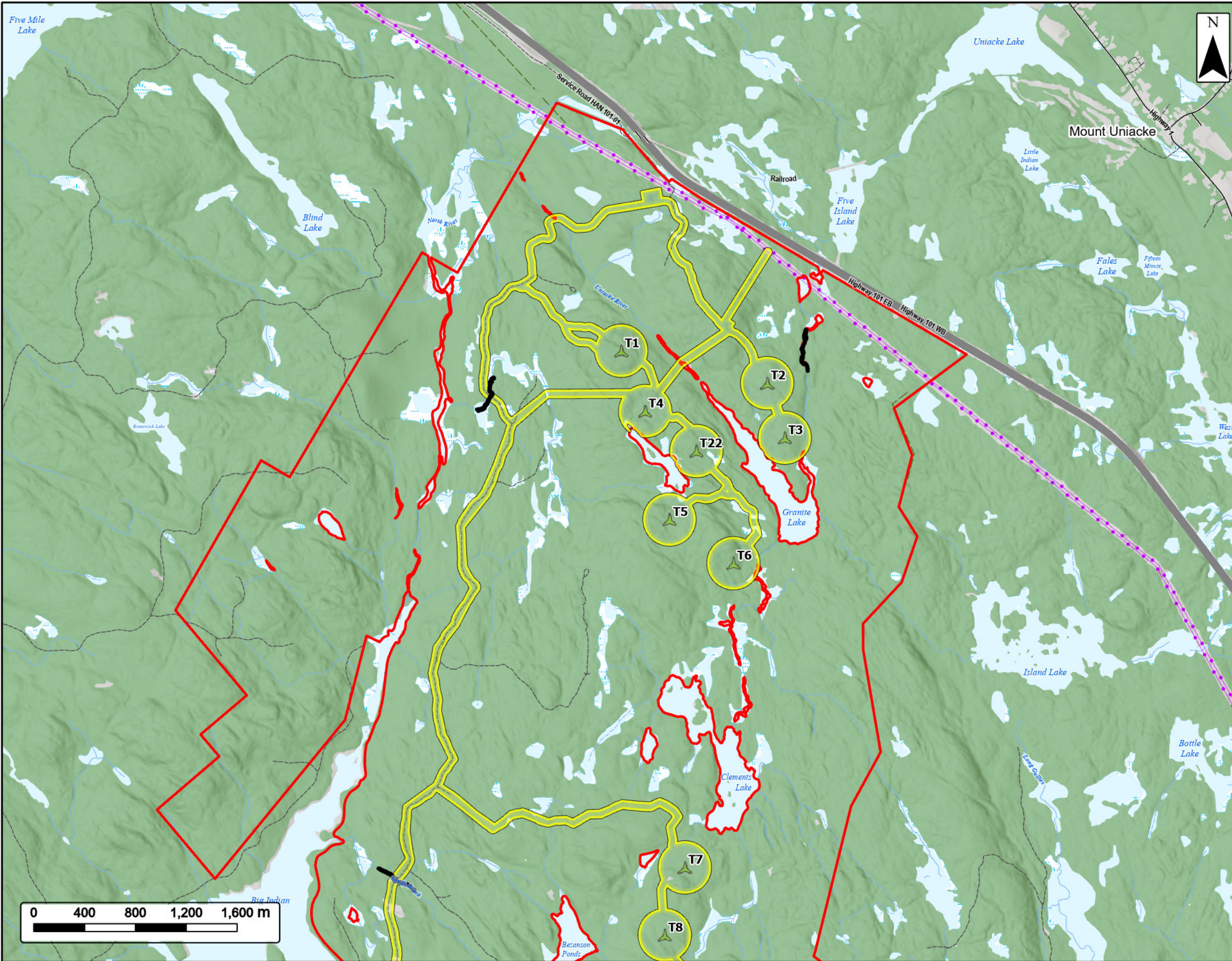


Coordinate System: NAD83 UTM Zone 20N  
Sources: Google Basemaps, GeoNOVA, SNSIS, NSNRR, ACCDC, IBA Canada, CNWI, HERE, Garmin, USGS

Date: Nov 2024	Project #: 24-9856
Scale: 1:70,000	Drawing #: <b>7.23</b>
Drawn By: K. Wallace	
Checked By: H. Mosher	



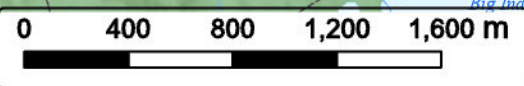
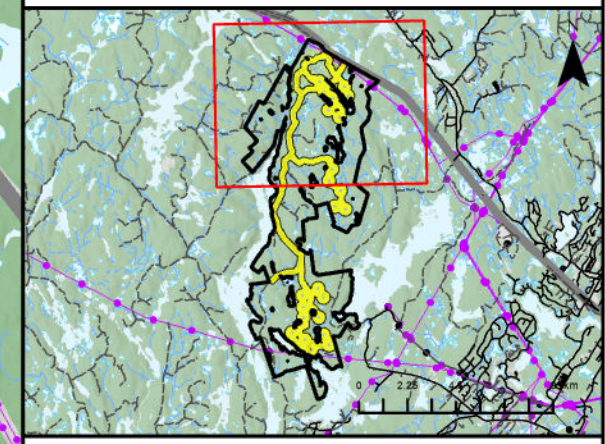




**Melvin Lake Wind Project**  
Wood Turtle Surveys



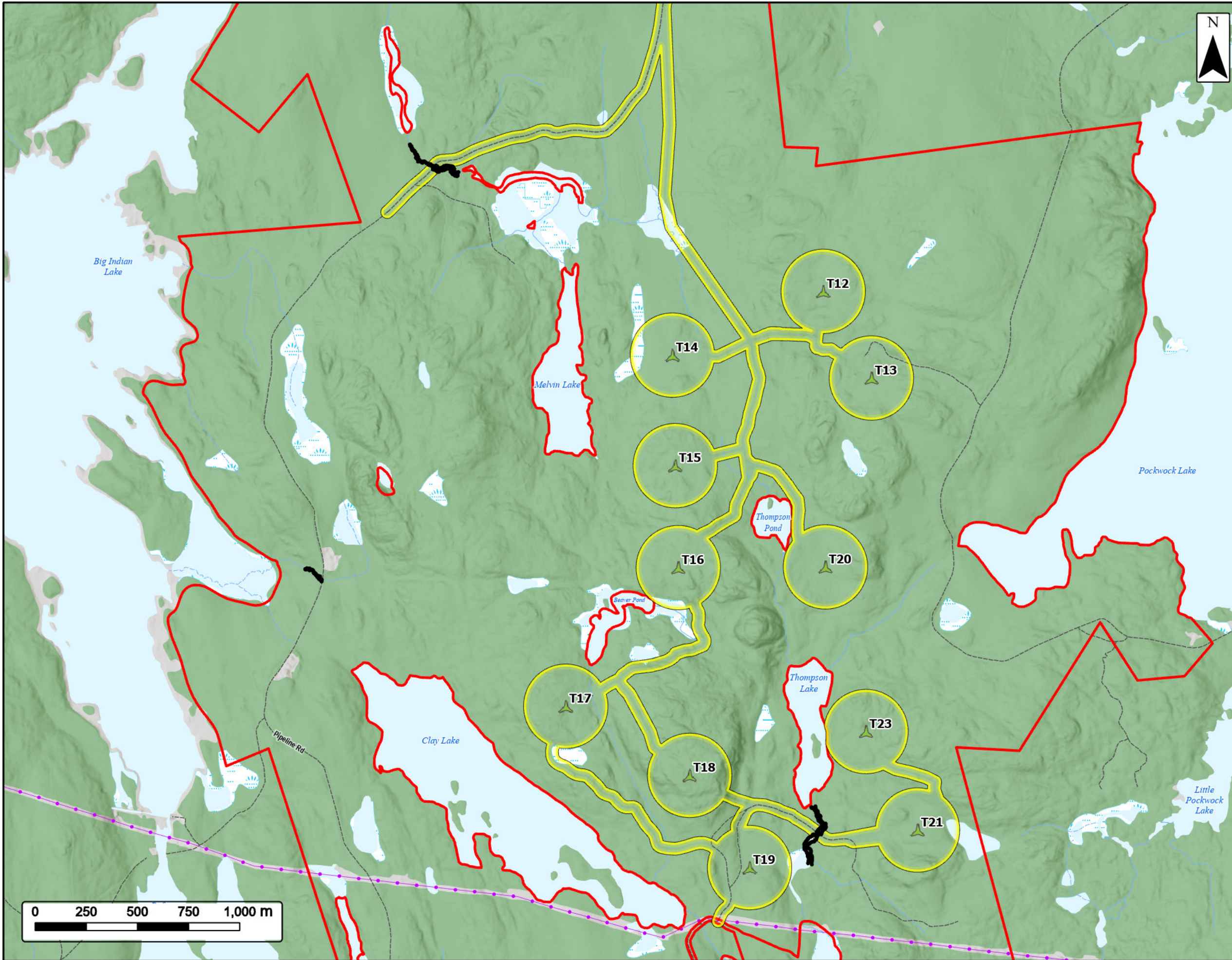
- Study Area
- Assessment Area
- Proposed Turbine Layout
- Wood Turtle Survey Transects (2024)
- Utilities (Line)**
- Existing Transmission Lines
- Transportation**
- Highway
- Road
- Unpaved Road
- Water Features**
- Mapped Stream
- Mapped Indefinite Stream
- Mapped Lakes and Rivers
- Mapped Wetlands



Coordinate System: NAD83 UTM Zone 20N		Sources: Google Basemaps, GeoNOVA, SNSIS, NSNRR, ACCDC, IBA Canada, CNWI, HERE, Garmin, USGS	
Date:	Nov 2024	Project #:	24-9856
Scale:	1:29,000	Drawing #:	7.24A
Drawn By:	K. Wallace		
Checked By:	H. Mosher		



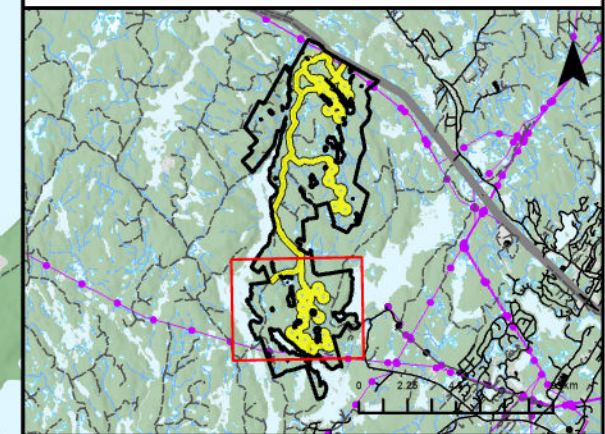




**Melvin Lake Wind Project**  
Wood Turtle Surveys



Study Area	
Assessment Area	
Proposed Turbine Layout	
Wood Turtle Survey Transects (2024)	
<b>Utilities (Line)</b>	
Existing Transmission Lines	
<b>Transportation</b>	
Road	
Unpaved Road	
<b>Water Features</b>	
Mapped Stream	
Mapped Indefinite Stream	
Mapped Lakes and Rivers	
Mapped Wetlands	

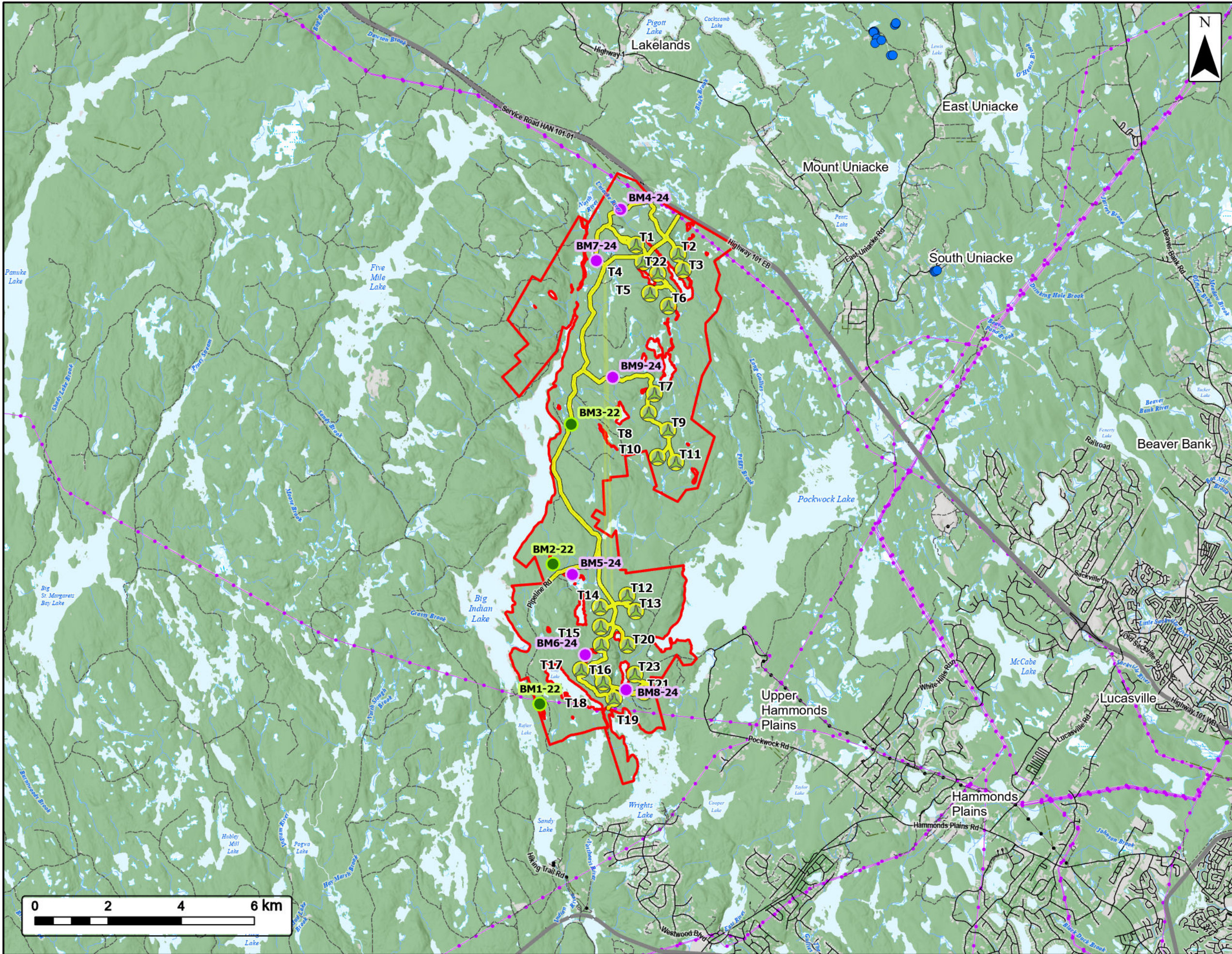


Coordinate System: NAD83 UTM Zone 20N  
Sources: Google Basemaps, GeoNOVA, SNSIS, NSNRR, ACCDC, IBA Canada, CNWI, HERE, Garmin, USGS

Date: Nov 2024	Project #: 24-9856
Scale: 1:18,000	Drawing #: <b>7.24B</b>
Drawn By: K. Wallace	
Checked By: H. Mosher	







**Melvin Lake Wind Project**  
Bat Assessment



- Study Area
- Assessment Area
- Proposed Turbine Layout
- Abandoned Mine Openings
- Bat Monitor Locations (2023)
- Bat Monitor Locations (2024)
- Transportation**
- Highway
- Road
- Unpaved Road
- Utilities (Line)**
- Existing Pipeline
- Existing Transmission Lines
- Water Features**
- Mapped Stream
- Mapped Indefinite Stream
- Mapped Lakes and Rivers
- Mapped Wetlands

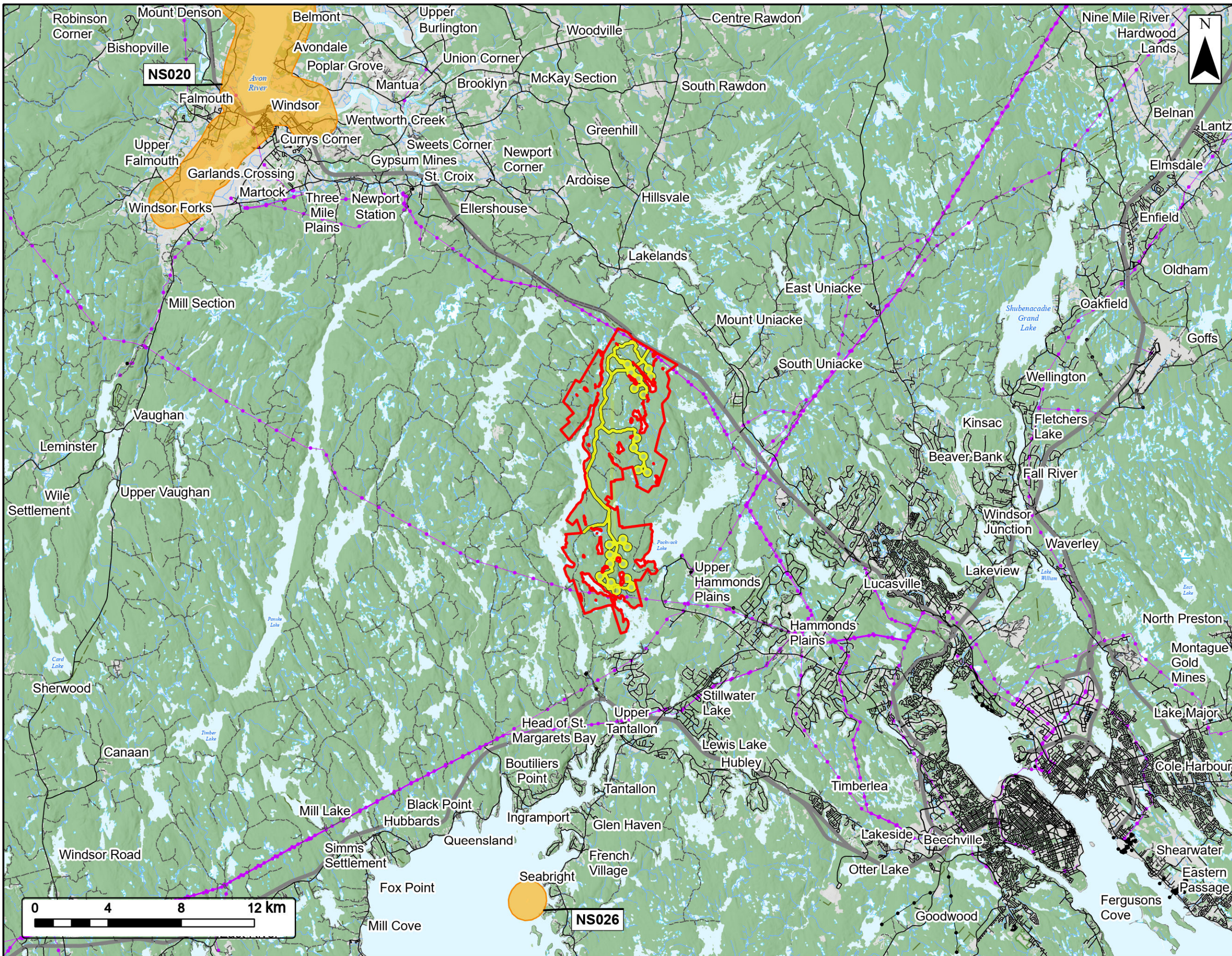


Coordinate System: NAD83 UTM Zone 20N Sources: Google Basemaps, GeoNOVA, SNSIS, NSNRR, ACCDC, IBA Canada, CNWI, HERE, Garmin, USGS

Date: Nov 2024	Project #: 24-9856
Scale: 1:100,000	Drawing #: <b>7.25</b>
Drawn By: M. Partridge	
Checked By: H. Mosher	







# Melvin Lake Wind Project

Important Bird Areas



- Study Area
- Assessment Area
- Important Bird Area (IBA)
- Utilities (Line)**
- Existing Pipeline
- Existing Transmission Lines
- Transportation**
- Highway
- Road
- Unpaved Road
- Water Features**
- Mapped Stream
- Mapped Indefinite Stream
- Mapped Lakes and Rivers
- Mapped Wetlands



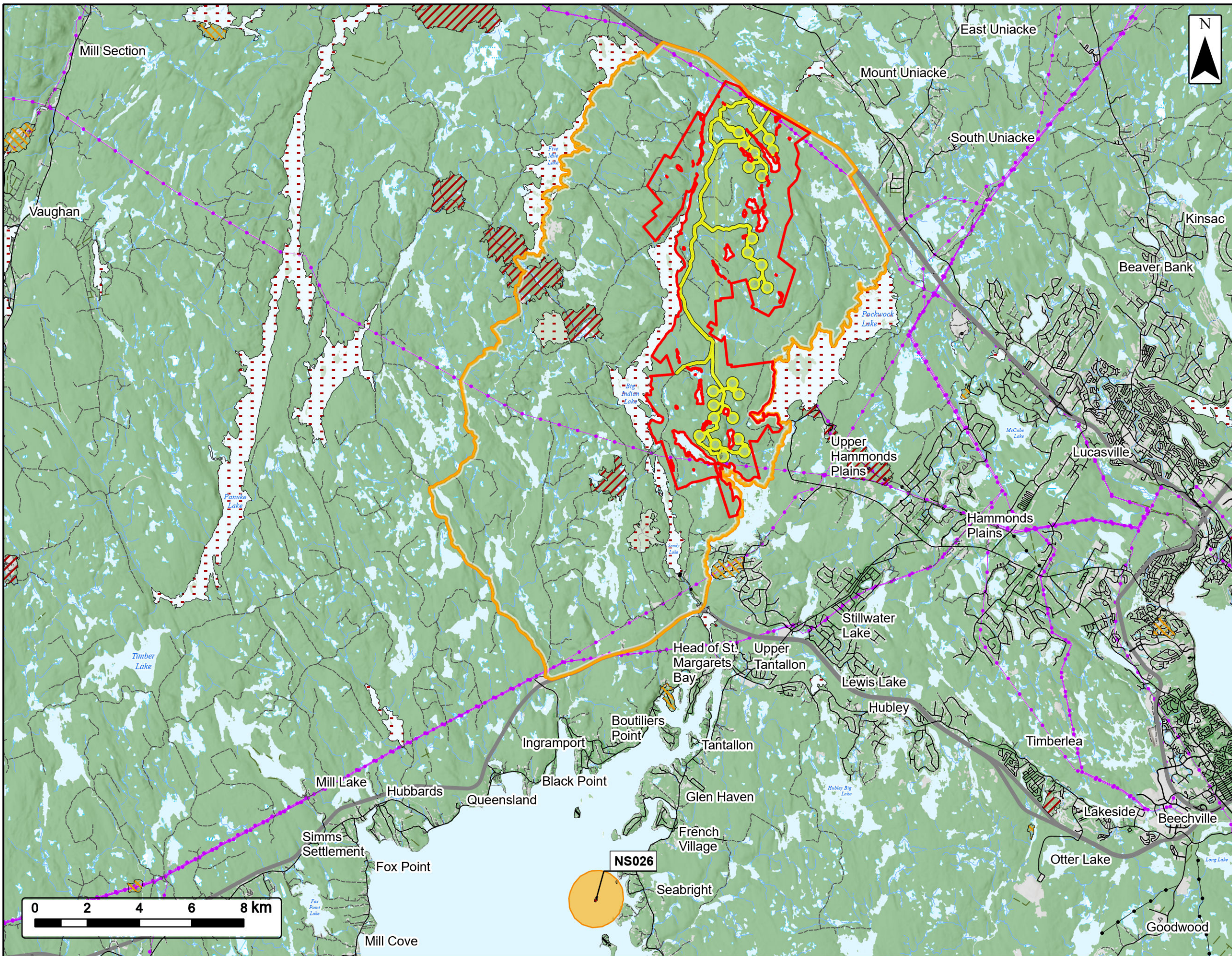
Coordinate System: NAD83 UTM Zone 20N  
Sources: Google Basemaps, GeoNOVA, SNSIS, NSNRR, ACCDC, IBA Canada, CNWI, HERE, Garmin, USGS

Date: Nov 2024	Project #: 24-9856
Scale: 1:200,000	Drawing #: <b>7.26</b>
Drawn By: M. Partridge	
Checked By: H. Mosher	



NS026





# Melvin Lake Wind Project

Avifauna Desktop Review



- Study Area
- Assessment Area
- Regional Assessment Area
- Important Bird Area (IBA)
- Significant Species and Habitats**
- Migratory Bird
- Other Habitat
- Species at Risk
- Species of Concern
- Transportation**
- Highway
- Road
- Unpaved Road
- Utilities (Line)**
- Existing Pipeline
- Existing Transmission Lines
- Water Features**
- Mapped Stream
- Mapped Indefinite Stream
- Mapped Lakes and Rivers
- Mapped Wetlands



Coordinate System: NAD83 UTM Zone 20N Sources: Google Basemaps, GeoNOVA, SNSIS, NSNRR, ACCDC, IBA Canada, CNWI, HERE, Garmin, USGS

Date: Nov 2024	Project #: 24-9856
Scale: 1:140,000	<b>7.27</b>
Drawn By: P. Opra	
Checked By: H. Mosher	

