

Melvin Lake Wind Project

Avifauna Desktop Review



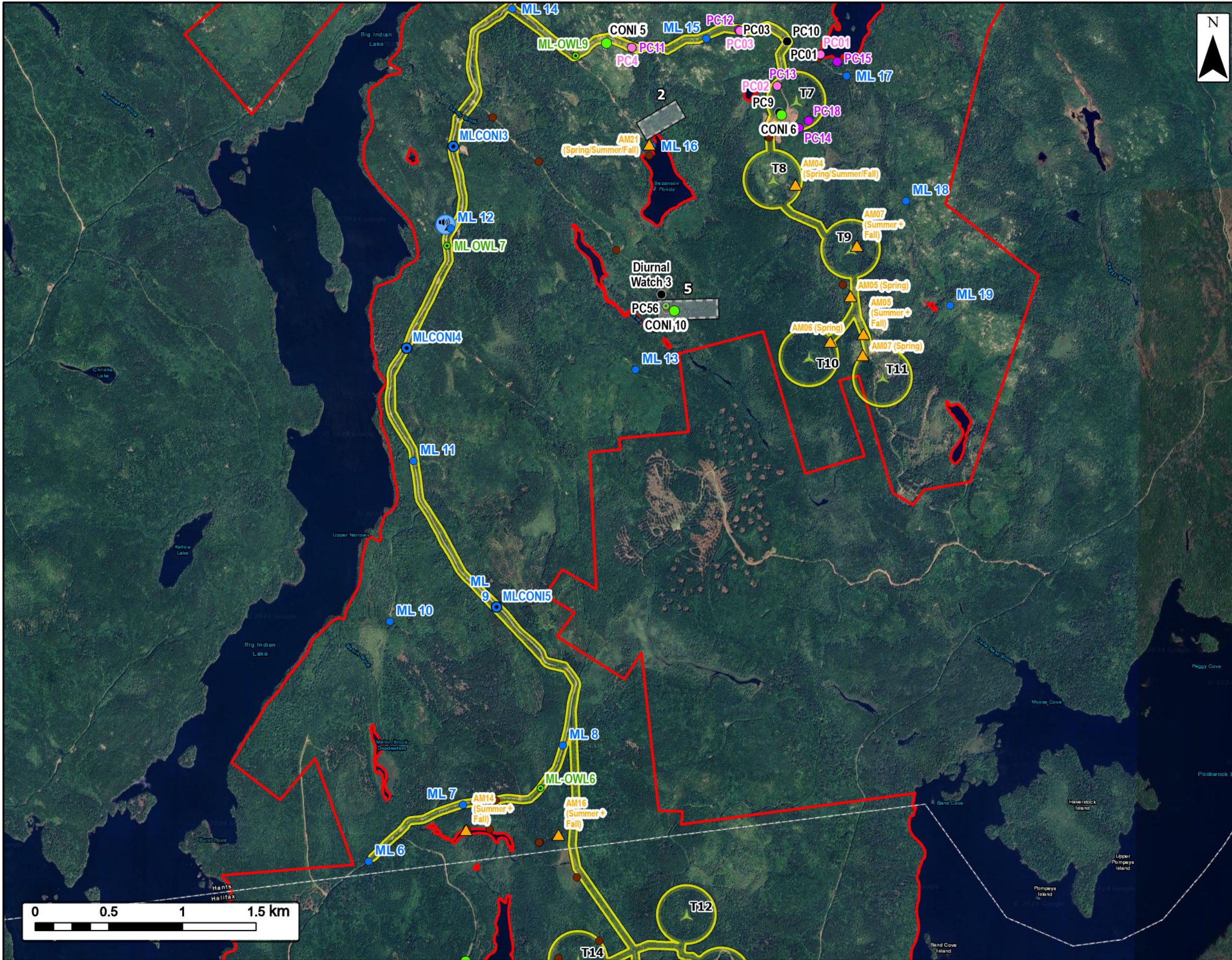
Study Area		Transportation	
Assessment Area		Highway	
Regional Assessment Area		Road	
		Unpaved Road	
NS Protected Areas		Utilities (Line)	
Type of Existing Protection		Existing Pipeline	
Nature Reserve		Existing Transmission Lines	
Nature Reserve and Wilderness Area		Water Features	
Wilderness Area		Mapped Stream	
		Mapped Indefinite Stream	
NS Lands Proposed or Pending Protection		Mapped Lakes and Rivers	
Nature Reserve		Mapped Wetlands	
Wilderness Area			



Coordinate System: NAD83 UTM Zone 20N
Sources: Google Basemaps, GeoNOVA, SNSIS, NSNRR, ACCDC, IBA Canada, CNWI, HERE, Garmin, USGS

Date:	Nov 2024	Project #:	24-9856
Scale:	1:110,000	Drawing #:	7.28
Drawn By:	P. Opra		
Checked By:	H. Mosher		

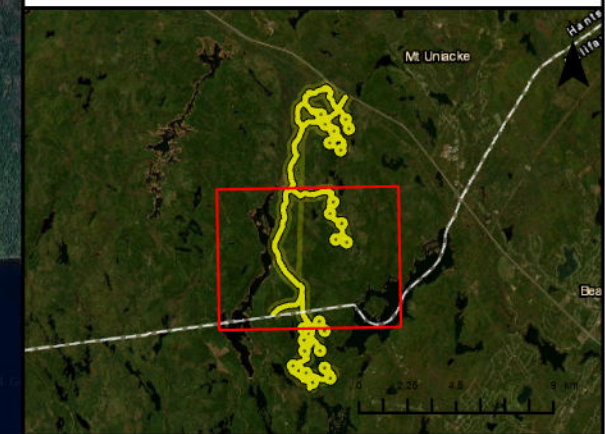




Melvin Lake Wind Project
2022-2024 Avian Surveys



- Proposed Turbine Layout
- Assessment Area
- Study Area
- Radar Location
- 2022/2023 Bird Surveys**
- 2022/2023 Point Count Locations
- 2022 / 2023 CONI & Diurnal Watch Location
- 2024 Bird Surveys**
- 2024 Winter Point Count
- Summer & Fall Point Count (2024)
- 2024 CONI Location
- 2024 Incidental Survey Location
- Spring Point Count
- 2024 Audiomoth Location
- 2024 Owl Location
- Area Search Location



Path: 24-9856_MVL_Equipment_PointCounts.aprx
Coordinate System: NAD83 UTM Zone 20N
Sources: Google Basemaps, GeoNOVA, SNSIS, NSNRR, ACCDC, IBA Canada, CNWI, HERE, Garmin, USGS

Date: Nov 2024	Project #: 24-9856
Scale: 1:25,000	Drawing #: 7.29B
Drawn By: E. Johnson	
Checked By: C. Jardine	



Melvin Lake Wind Project

2022-2024 Avian Surveys



Proposed Turbine Layout



Assessment Area



Study Area



2022/2023 Bird Surveys

2022/2023 Point Count Locations



2022 / 2023 CONI & Diurnal Watch Location



2024 Bird Surveys

2024 Winter Point Count



Summer & Fall Point Count (2024)



2024 CONI Location



2024 Incidental Survey Location



Spring Point Count



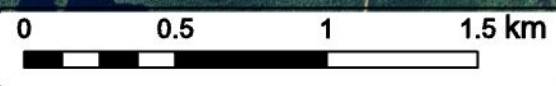
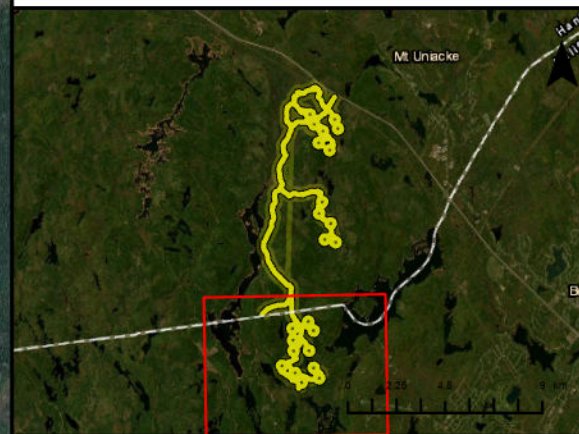
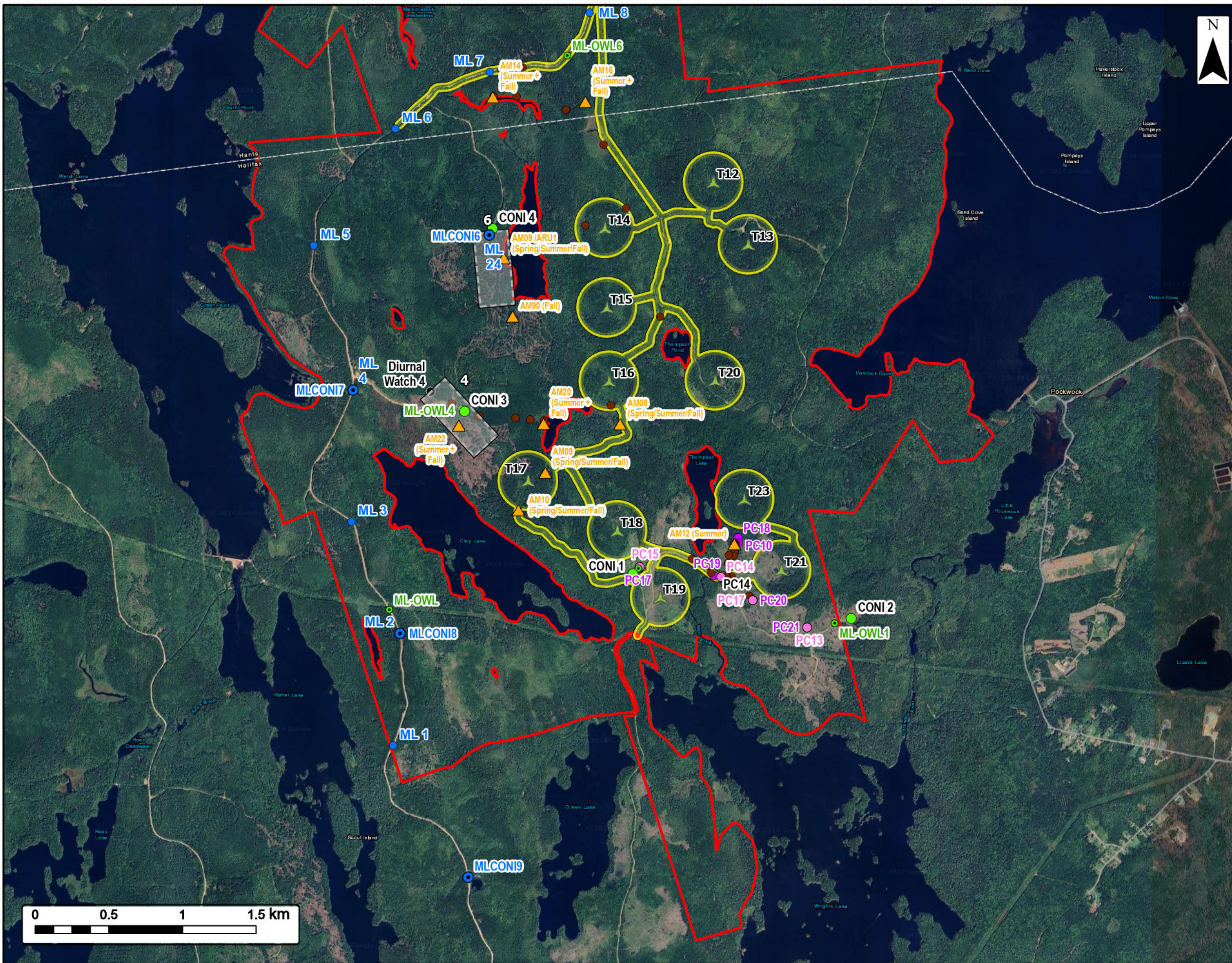
2024 Audiomoth Location



2024 Owl Location



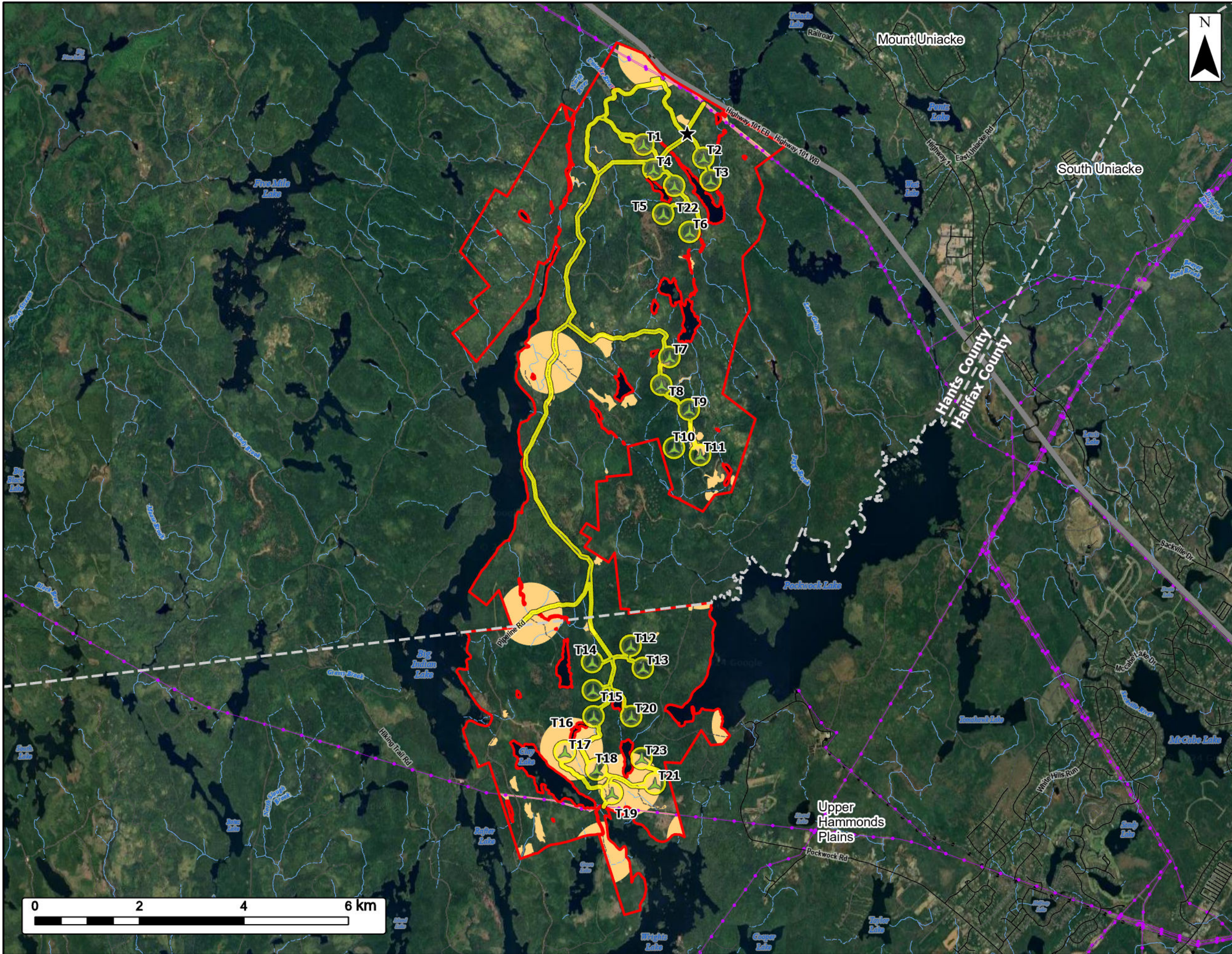
Area Search Location



Path: 24-9856_MVL_Equipment_PointCounts.aprx
Coordinate System: NAD83 UTM Zone 20N
Sources: Google Basemaps, GeoNOVA, SNSIS, NSNRR, ACCDC, IBA Canada, CNWI, HERE, Garmin, USGS

Date:	Nov 2024	Project #:	24-9856
Scale:	1:25,000	Drawing #:	7.29C
Drawn By:	E. Johnson		
Checked By:	C. Jardine		





Melvin Lake Wind Project
Potential Barn swallow Habitat



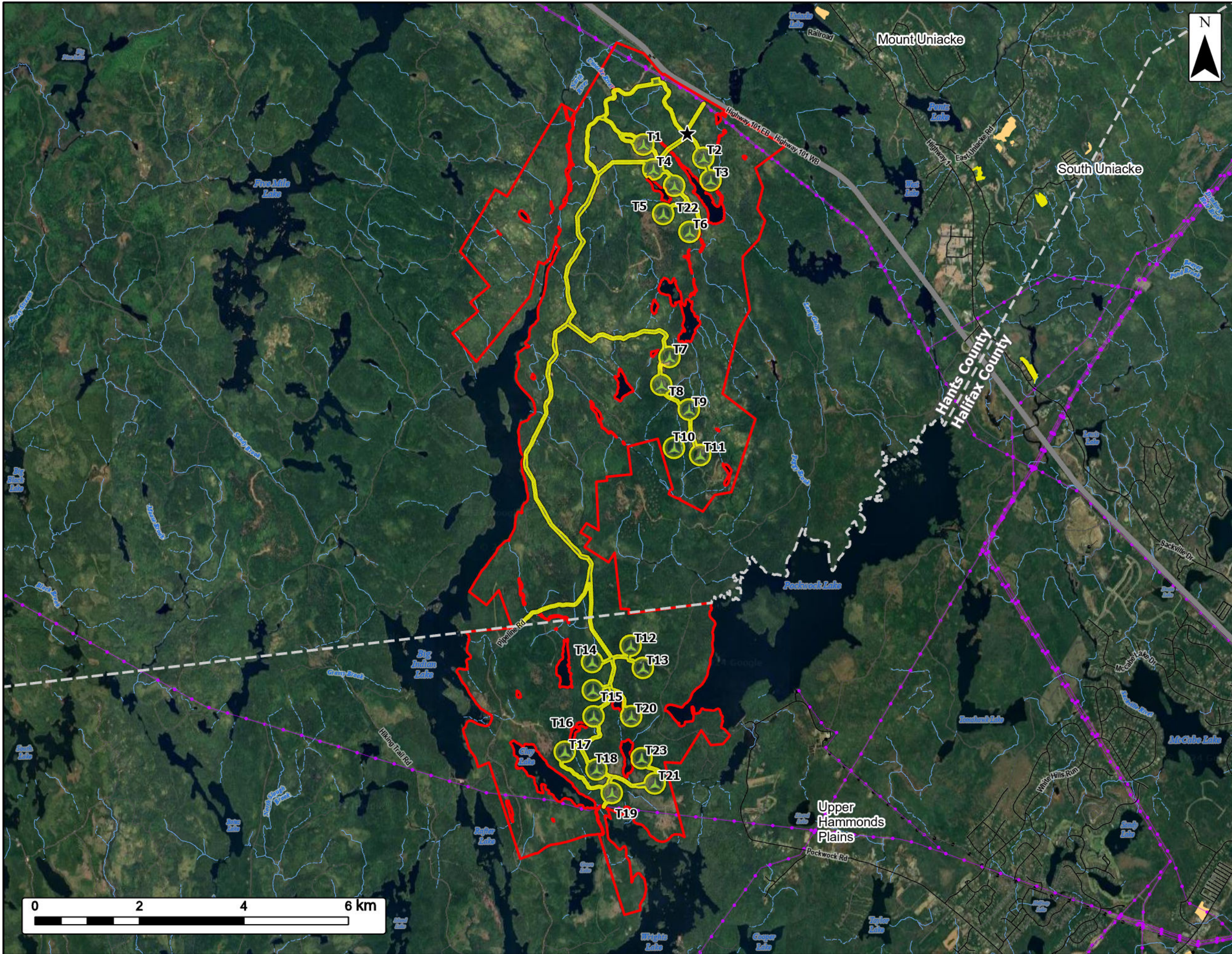
- Study Area
- Assessment Area
- Proposed Turbine Layout
- Substation
- County Boundary Line
- Potential Barn Swallow Habitat
- Transportation**
- Highway
- Road
- Unpaved Road
- Utilities (Line)**
- Existing Pipeline
- Existing Transmission Lines
- Water Features**
- Mapped Stream
- Mapped Indefinite Stream



Coordinate System: NAD83 UTM Zone 20N Sources: Google Basemaps, GeoNOVA, SNSIS, NSNRR, ACCDC, IBA Canada, CNWI, HERE, Garmin, USGS

Date: Nov 2024	Project #: 24-9856
Scale: 1:70,000	7.30
Drawn By: P. Opra	
Checked By: H. Mosher	





Melvin Lake Wind Project
Potential Bobolink Habitat



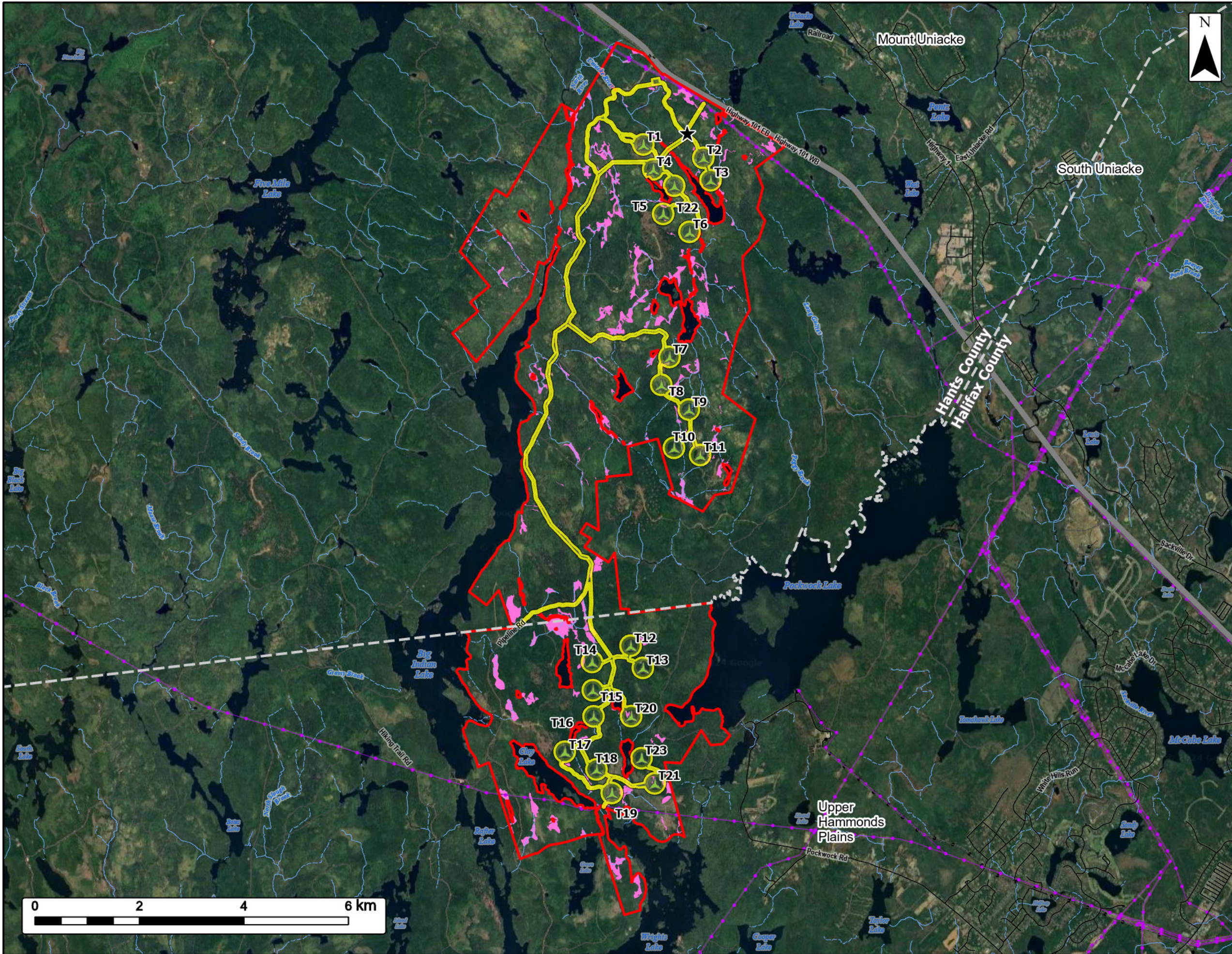
- Study Area
- Assessment Area
- Proposed Turbine Layout
- Substation
- County Boundary Line
- Landcover**
- Agriculture
- Old Field
- Transportation**
- Highway
- Road
- Unpaved Road
- Utilities (Line)**
- Existing Pipeline
- Existing Transmission Lines
- Water Features**
- Mapped Stream
- Mapped Indefinite Stream



Coordinate System: NAD83 UTM Zone 20N Sources: Google Basemaps, GeoNOVA, SNSIS, NSNRR, ACCDC, IBA Canada, CNWI, HERE, Garmin, USGS

Date: Nov 2024	Project #: 24-9856
Scale: 1:70,000	Drawing #: 7.31
Drawn By: P. Opra	
Checked By: H. Mosher	





Melvin Lake Wind Project
Potential Canada warbler Habitat



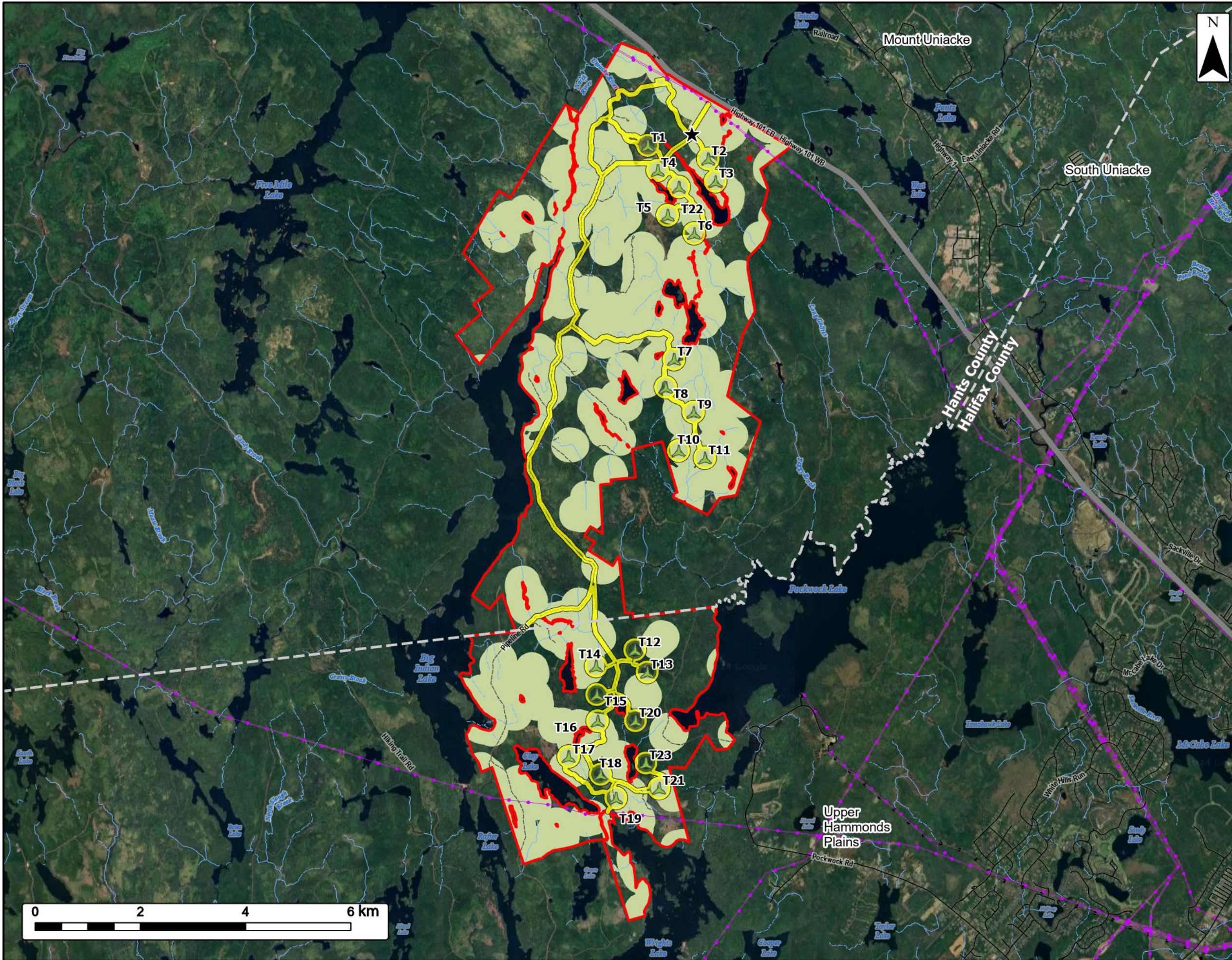
- Study Area
- Assessment Area
- Proposed Turbine Layout
- Substation
- County Boundary Line
- Potential Canada Warbler Habitat
- Transportation**
- Highway
- Road
- Unpaved Road
- Utilities (Line)**
- Existing Pipeline
- Existing Transmission Lines
- Water Features**
- Mapped Stream
- Mapped Indefinite Stream



Coordinate System: NAD83 UTM Zone 20N Sources: Google Basemaps, GeoNOVA, SNSIS, NSNRR, ACCDC, IBA Canada, CNWI, HERE, Garmin, USGS

Date: Nov 2024	Project #: 24-9856
Scale: 1:70,000	Drawing #: 7.32
Drawn By: P. Opra	
Checked By: H. Mosher	





Melvin Lake Wind Project
Potential Chimney swift Habitat



- Study Area
- Assessment Area
- Proposed Turbine Layout
- Substation
- County Boundary Line
- Potential Chimney Swift Habitat
- Transportation**
- Highway
- Road
- Unpaved Road
- Utilities (Line)**
- Existing Pipeline
- Existing Transmission Lines
- Water Features**
- Mapped Stream
- Mapped Indefinite Stream



Coordinate System: NAD83 UTM Zone 20N Sources: Google Basemaps, GeoNOVA, SNSIS, NSNRR, ACCDC, IBA Canada, CNWI, HERE, Garmin, USGS

Date: Nov 2024	Project #: 24-9856
Scale: 1:70,000	Drawing #: 7.33
Drawn By: P. Opra	
Checked By: H. Mosher	

