

Melvin Lake Wind Project
Potential Common nighthawk Habitat



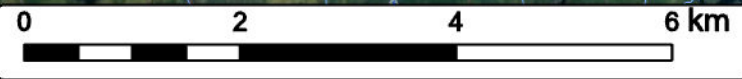
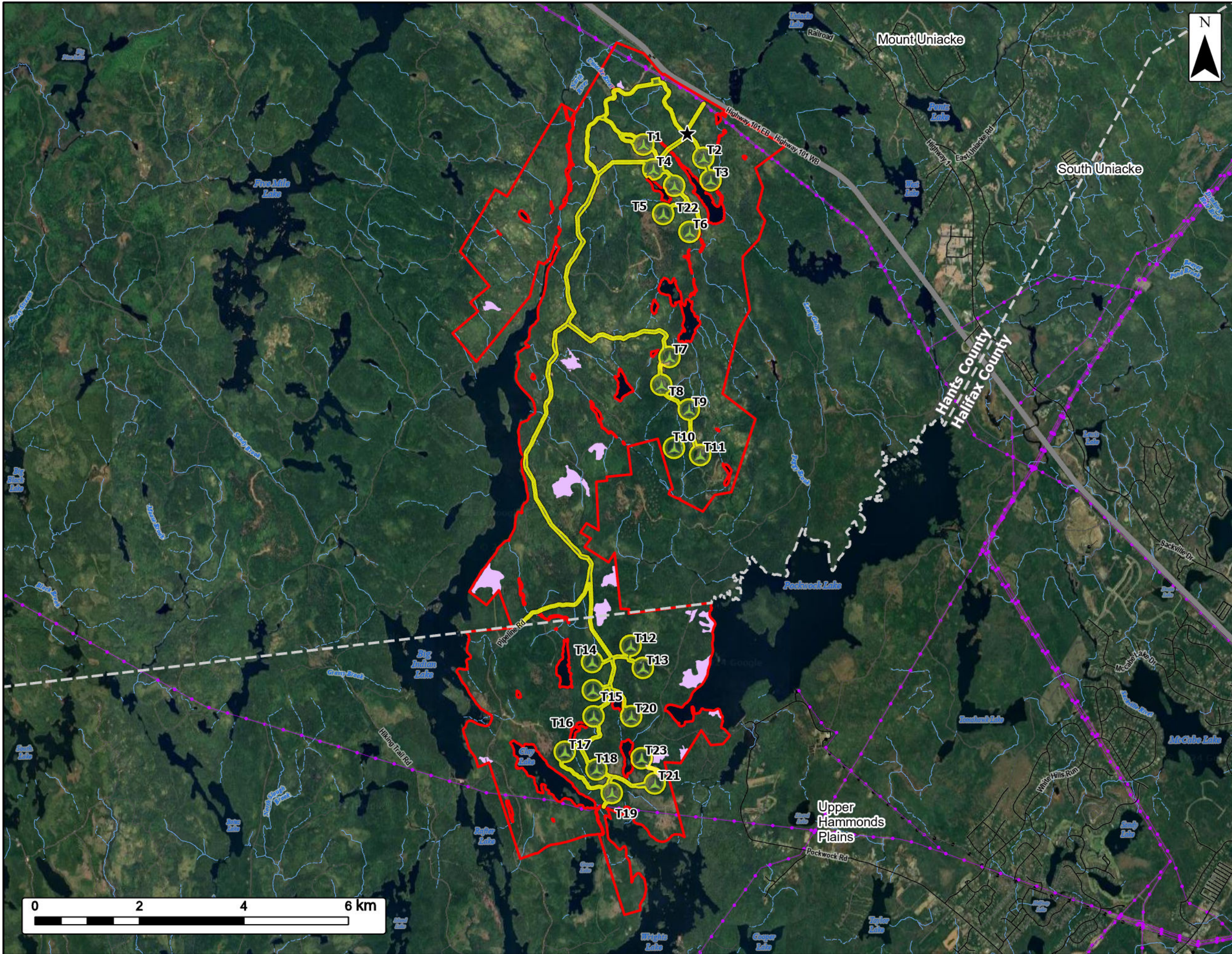
- Study Area
- Assessment Area
- Proposed Turbine Layout
- Substation
- County Boundary Line
- Potential Common Nighthawk Habitat
- Transportation**
- Highway
- Road
- Unpaved Road
- Utilities (Line)**
- Existing Pipeline
- Existing Transmission Lines
- Water Features**
- Mapped Stream
- Mapped Indefinite Stream



Coordinate System: NAD83 UTM Zone 20N Sources: Google Basemaps, GeoNOVA, SNSIS, NSNRR, ACCDC, IBA Canada, CNWI, HERE, Garmin, USGS

Date: Nov 2024	Project #: 24-9856
Scale: 1:70,000	Drawing #: 7.34
Drawn By: P. Opra	
Checked By: H. Mosher	





Melvin Lake Wind Project

Potential Eastern wood peewee Habitat



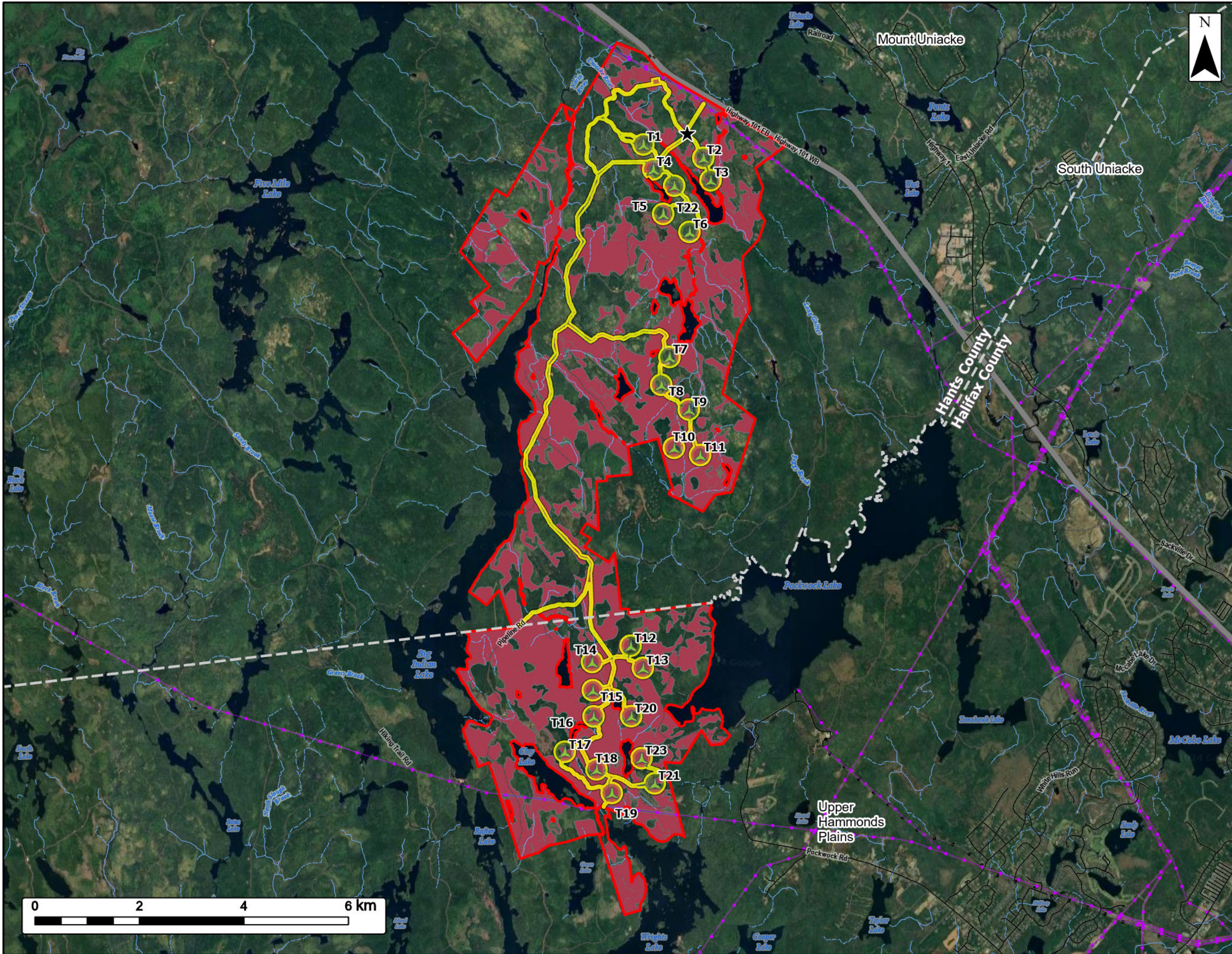
- Study Area
- Assessment Area
- Proposed Turbine Layout
- Substation
- County Boundary Line
- Potential Eastern Wood Peewee Habitat
- Transportation**
- Highway
- Road
- Unpaved Road
- Utilities (Line)**
- Existing Pipeline
- Existing Transmission Lines
- Water Features**
- Mapped Stream
- Mapped Indefinite Stream



Coordinate System: NAD83 UTM Zone 20N Sources: Google Basemaps, GeoNOVA, SNSIS, NSNRR, ACCDC, IBA Canada, CNWI, HERE, Garmin, USGS

Date: Nov 2024	Project #: 24-9856
Scale: 1:70,000	<h1>7.35</h1>
Drawn By: P. Opra	
Checked By: H. Mosher	





Melvin Lake Wind Project
Potential Evening grosbeak Habitat



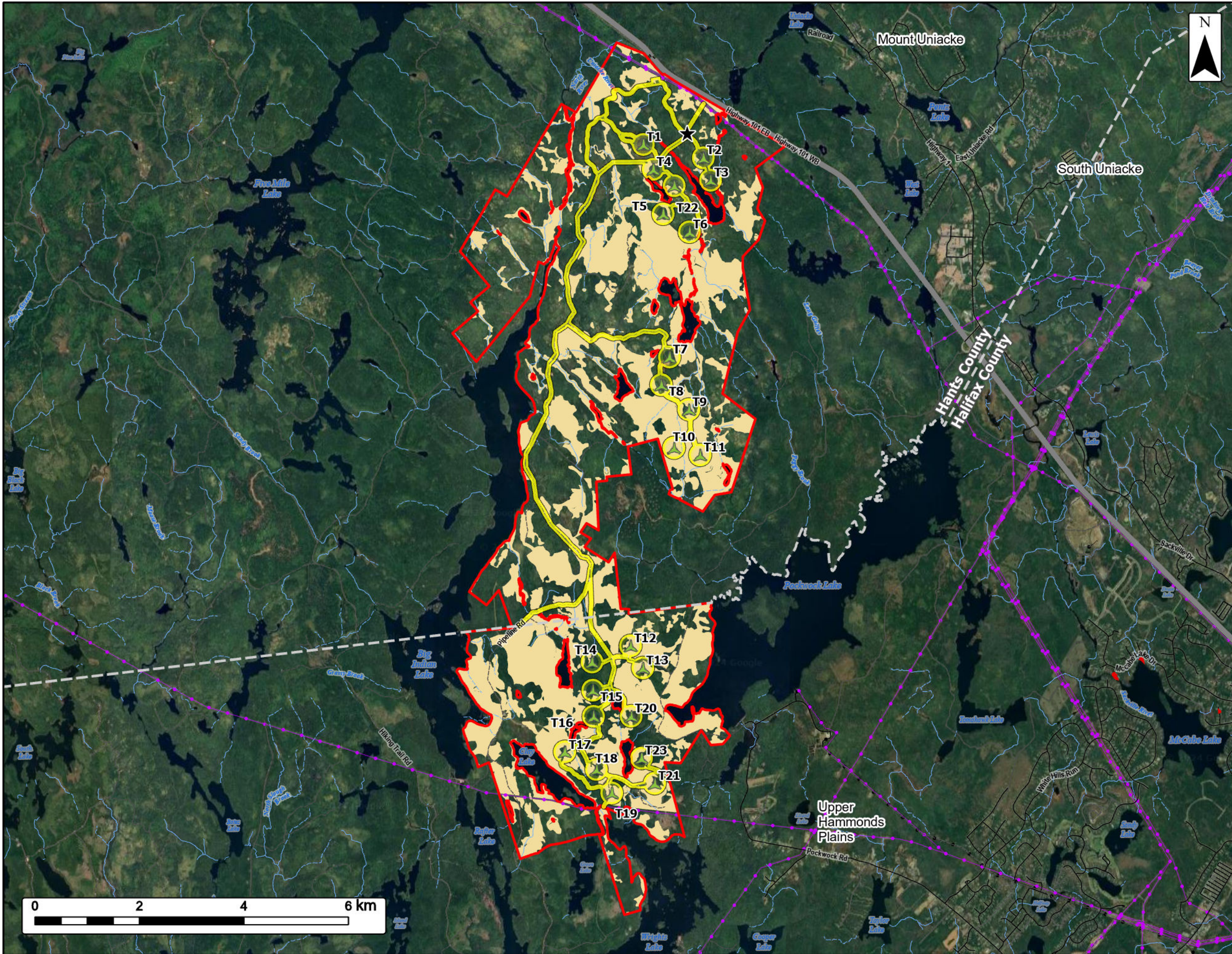
- Study Area
- Assessment Area
- Proposed Turbine Layout
- Substation
- County Boundary Line
- Potential Evening Grosbeak Habitat
- Transportation**
- Highway
- Road
- Unpaved Road
- Utilities (Line)**
- Existing Pipeline
- Existing Transmission Lines
- Water Features**
- Mapped Stream
- Mapped Indefinite Stream



Coordinate System: NAD83 UTM Zone 20N Sources: Google Basemaps, GeoNOVA, SNSIS, NSNRR, ACCDC, IBA Canada, CNWI, HERE, Garmin, USGS

Date: Nov 2024	Project #: 24-9856
Scale: 1:70,000	7.36
Drawn By: P. Opra	
Checked By: H. Mosher	





Melvin Lake Wind Project
Potential Olive-sided flycatcher Habitat



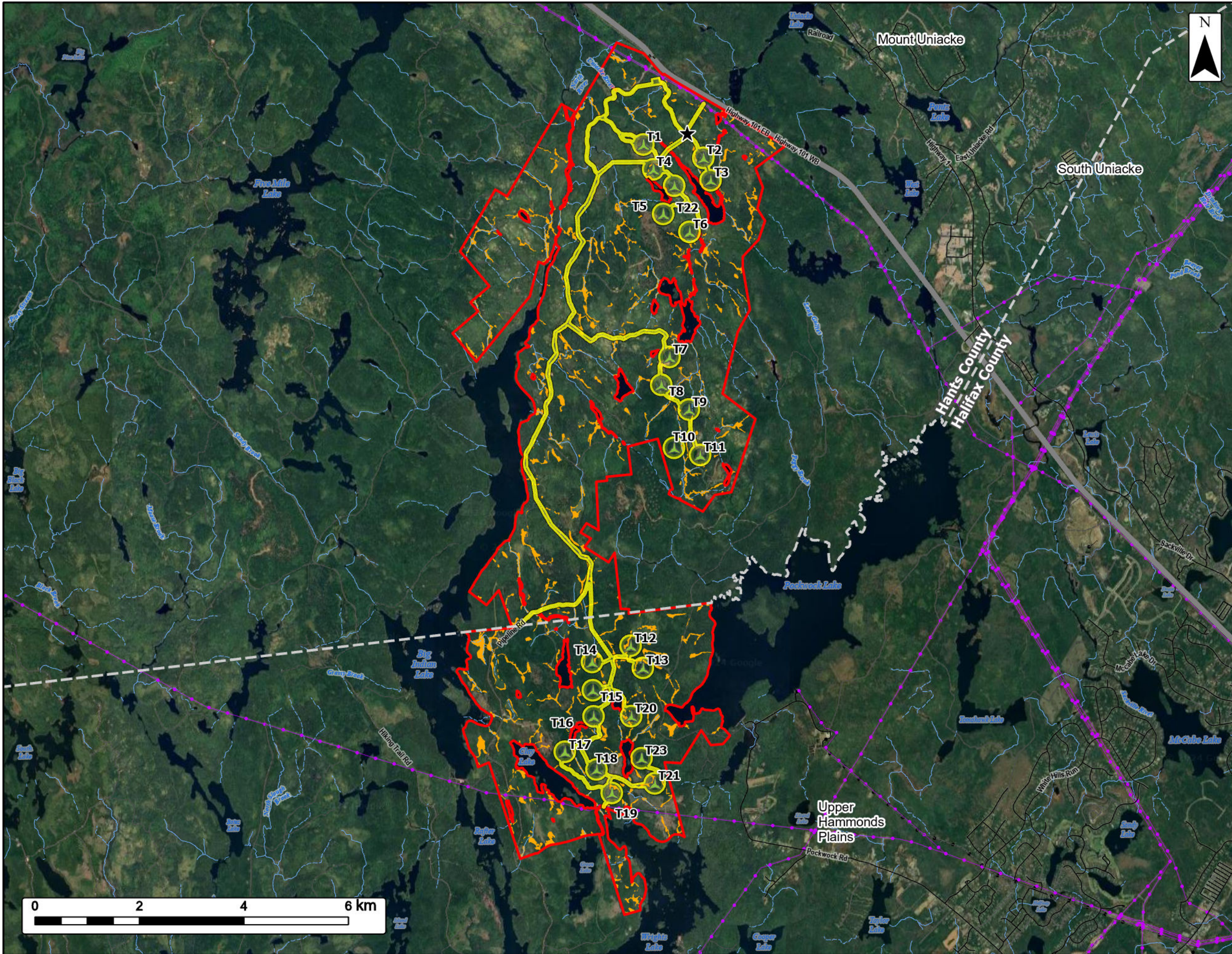
- Study Area
- Assessment Area
- Proposed Turbine Layout
- Substation
- County Boundary Line
- Potential Olive-sided Flycatcher Habitat
- Transportation**
- Highway
- Road
- Unpaved Road
- Utilities (Line)**
- Existing Pipeline
- Existing Transmission Lines
- Water Features**
- Mapped Stream
- Mapped Indefinite Stream



Coordinate System: NAD83 UTM Zone 20N Sources: Google Basemaps, GeoNOVA, SNSIS, NSNRR, ACCDC, IBA Canada, CNWI, HERE, Garmin, USGS

Date: Nov 2024	Project #: 24-9856
Scale: 1:70,000	Drawing #: 7.37
Drawn By: P. Opra	
Checked By: H. Mosher	





Melvin Lake Wind Project
Potential Rusty blackbird Habitat



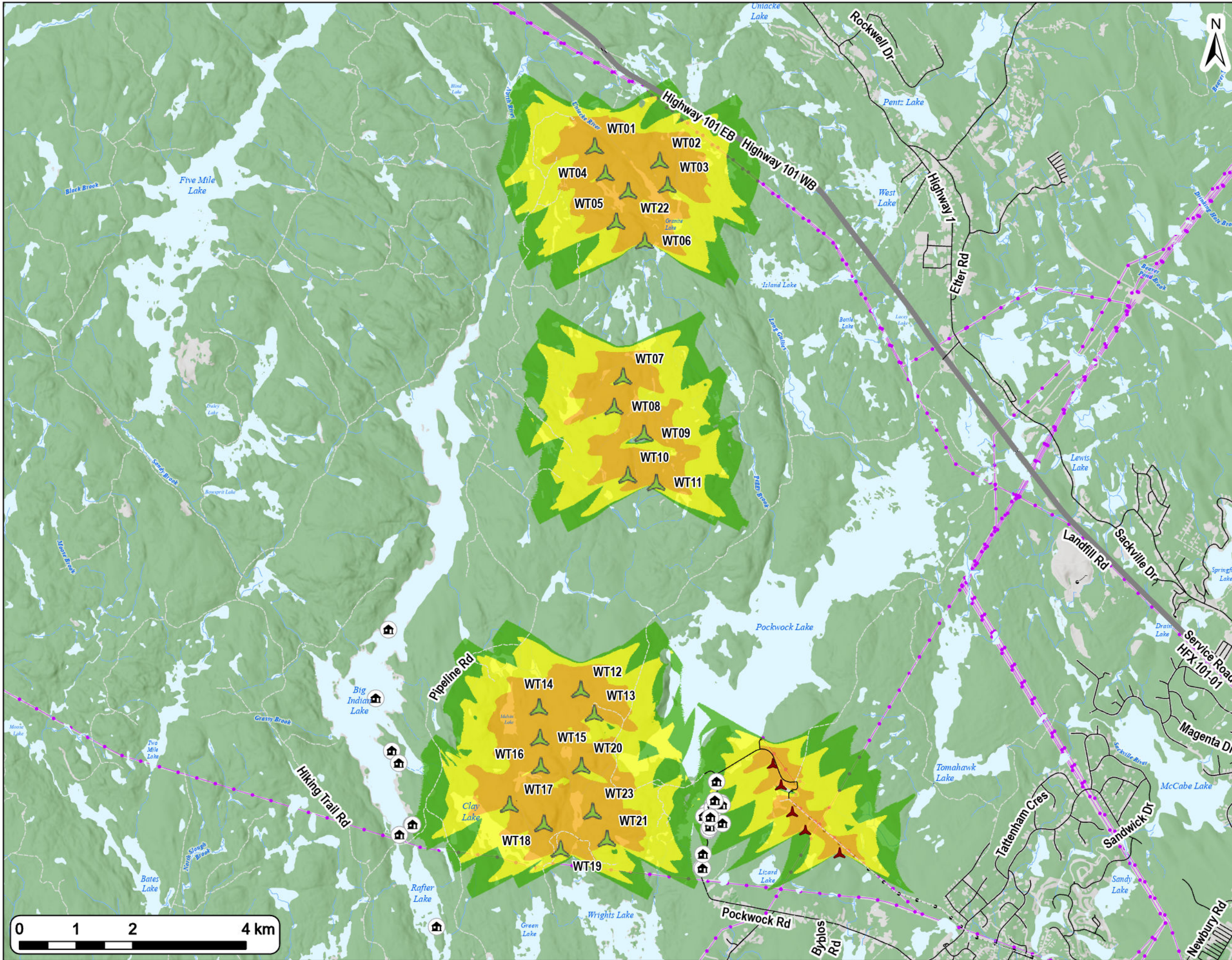
- Study Area
- Assessment Area
- Proposed Turbine Layout
- Substation
- County Boundary Line
- Potential Rusty Blackbird Habitat
- Transportation**
- Highway
- Road
- Unpaved Road
- Utilities (Line)**
- Existing Pipeline
- Existing Transmission Lines
- Water Features**
- Mapped Stream
- Mapped Indefinite Stream



Coordinate System: NAD83 UTM Zone 20N Sources: Google Basemaps, GeoNOVA, SNSIS, NSNRR, ACCDC, IBA Canada, CNWI, HERE, Garmin, USGS

Date: Nov 2024	Project #: 24-9856
Scale: 1:70,000	Drawing #: 7.38
Drawn By: P. Opra	
Checked By: H. Mosher	





Melvin Lake Wind Farm

Shadow Flicker Hours per Year - Worst Case Scenario



- Existing Dwelling / Receptor within 2km of Turbine
- Existing Pockwock Turbine
- Proposed Turbine Location
- Shadow Flicker Hours per Year (Worst Case Scenario)**
 - 10-29
 - 30-99
 - 100+
- Water Features**
 - Mapped Stream
 - Mapped Indefinite Stream
 - Mapped Lakes and Rivers
- Transportation**
 - Highway
 - Road
 - Unpaved Road
- Utilities (Line)**
 - Existing Pipeline
 - Existing Transmission Lines

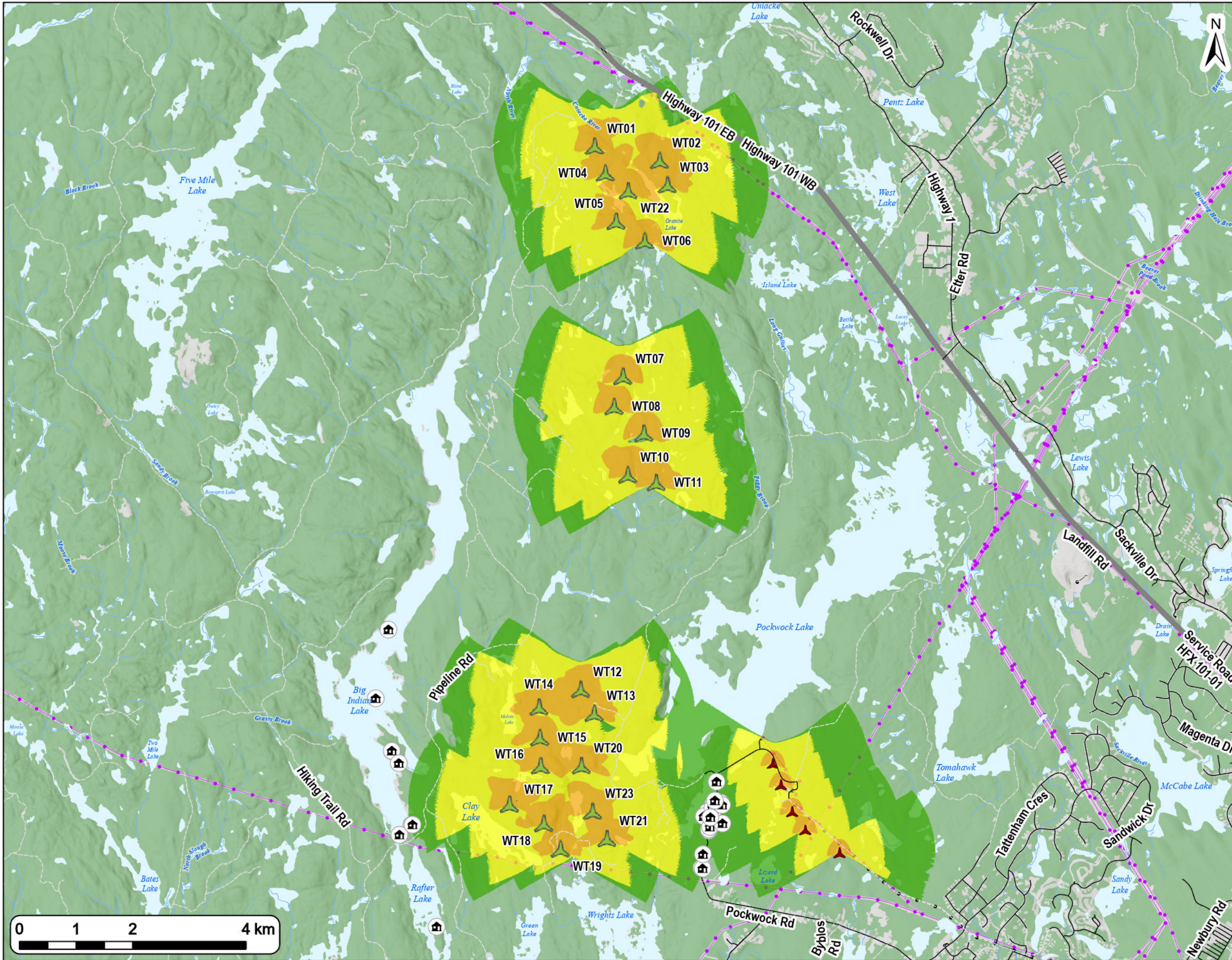
Note: Shadow flicker was modelled using **WindPRO v4.0** software. Worst case scenario shadow flicker assumes the sun is shining from sunrise to sunset 365 days of the year.



Coordinate System: NAD83 UTM Zone 20N
 File: 24-9856_MVL_WindPRO.aprx
 Sources: ESRI Basemaps, GeoNOVA, NSTD, HERE, Garmin, USGS, NRCAN

Date: November 18, 2024	Project #: 24-9856
Scale: 1:65,000	Drawing #: 10.1A
Drawn By: E. Johnson	
Checked By: H. Mosher	





Melvin Lake Wind Farm

Shadow Flicker Minutes per Day - Worst Case Scenario



- Existing Dwelling / Receptor within 2km of Turbine
 - Existing Pockwock Turbine
 - Proposed Turbine Location
- Shadow Flicker Minutes per Day (Worst Case Scenario)**
- 10-29
 - 30-99
 - 100+
- Water Features**
- Mapped Stream
 - Mapped Indefinite Stream
 - Mapped Lakes and Rivers
- Transportation**
- Highway
 - Road
 - Unpaved Road
- Utilities (Line)**
- Existing Pipeline
 - Existing Transmission Lines

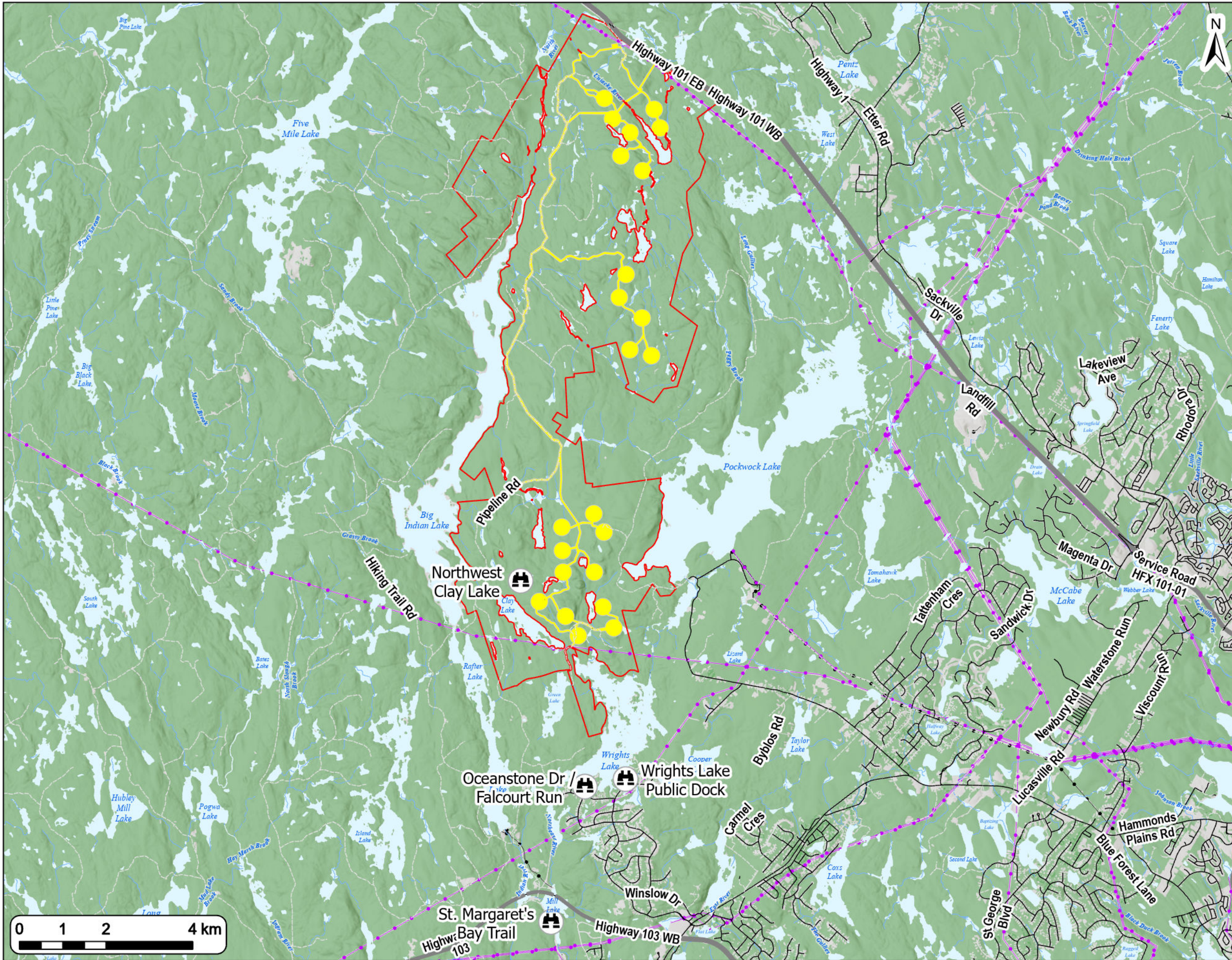
Note: Shadow flicker was modelled using using WindPRO v4.0 software. Worst case scenario shadow flicker assumes the sun is shining from sunrise to sunset 365 days of the year.



Coordinate System: NAD83 UTM Zone 20N
 File: 24-9856_MVL_WindPRO.aprx
 Sources: ESRI Basemaps, GeoNOVA, NSTD, HERE, Garmin, USGS, NRCAN

Date: November 18, 2024	Project #: 24-9856
Scale: 1:65,000	Drawing #: 10.1B
Drawn By: E. Johnson	10.1B
Checked By: H. Mosher	





Melvin Lake Wind Farm

Visual Simulation Locations



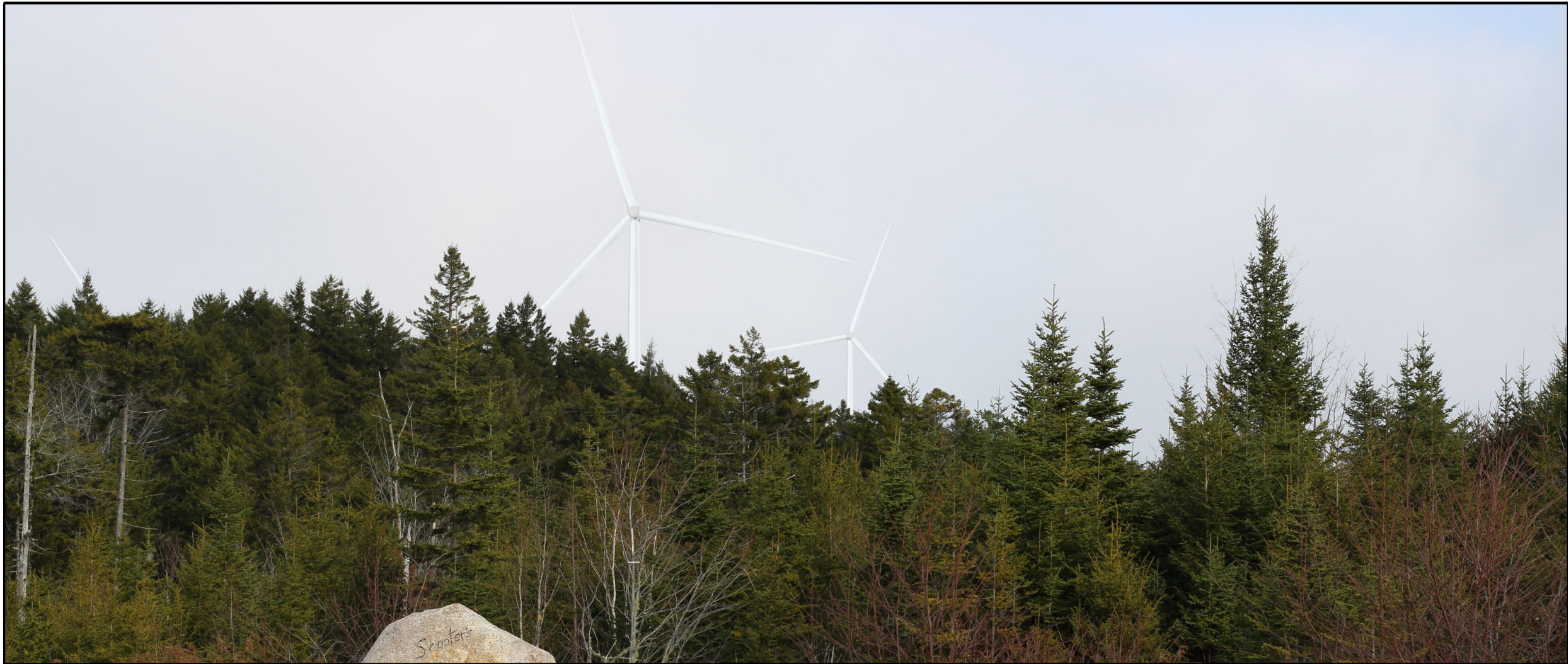
Study Area	
Assessment Area	
Visual Simulation Location	
Transportation	
Highway	
Road	
Unpaved Road	
Utilities (Line)	
Existing Pipeline	
Existing Transmission Lines	
Water Features	
Mapped Stream	
Mapped Indefinite Stream	
Mapped Lakes and Rivers	






Coordinate System: NAD83 UTM Zone 20N
 File: 24-9856_MVL_WindPRO.aprx
 Sources: ESRI Basemaps, GeoNOVA, NSTD, HERE, Garmin, USGS, NRCAN

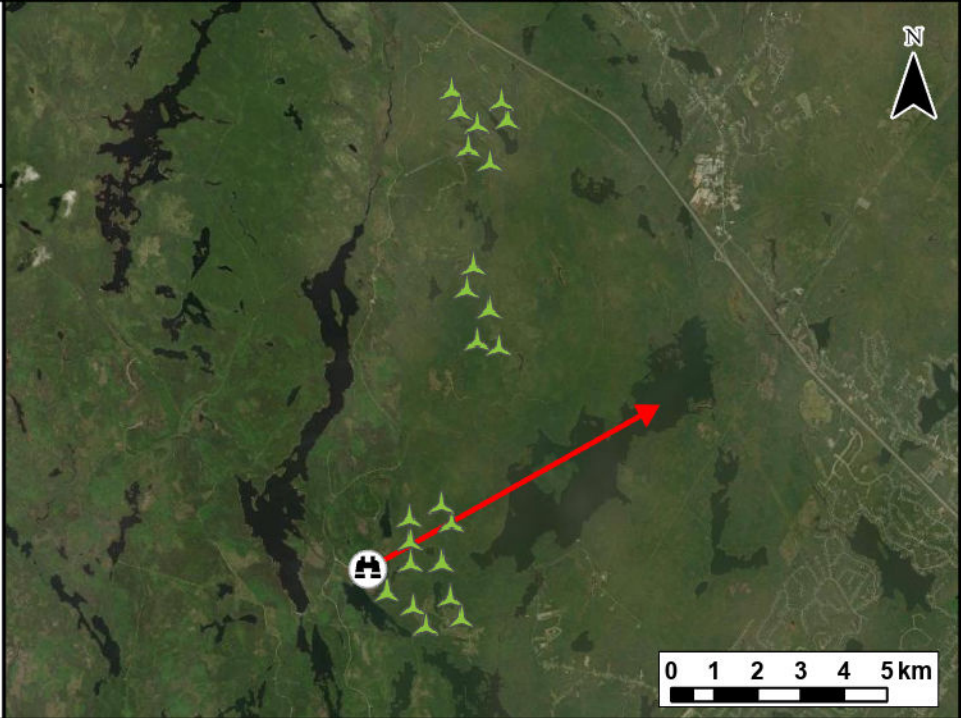
Date: November 18, 2024	Project #: 24-9856
Scale: 1:85,000	Drawing #: 10.2A
Drawn By: E. Johnson	10.2A
Checked By: H. Mosher	





Notes:
 1. Data Sources: GeoNova, Client
 2. Basemaps: Esri, DigitalGlobe, GeoEye, Earthstar Geographics, CNES/Airbus DS, USDA, USGS, AeroGRID, IGN, and the GIS User Community
 3. Projection: NAD83 UTM Zone 20

 Camera Bearing
 Proposed Turbine Location
 Camera Location



TECHNICAL INFORMATION	
Visual Simulation Location:	Northwest of Clay Lake
View Coordinates:	Latitude: 44° 46' 33.0" N Longitude: 63° 54' 27.0" W Easting: 428189.29m Northing: 4958437.70m
Distance to Nearest Turbine:	1.07km
Direction of View:	Northeast, Heading 60°
Camera Make/ Model:	Canon EOS REBEL T7
Lens:	50 mm
Image Resolution:	6000 x 4000
Weather Conditions:	Overcast
Date of Photo:	2024/11/14
Time of Photo:	12:57
Photo Credit:	Strum Consulting

**Melvin Lake
Wind Farm -
Visual Simulation
Northwest of Clay Lake**

strum
CONSULTING

Date:	Nov 2024	Project #:	24-9856
Scale:	1:175,000	Drawing #:	10.2B
Drawn By:	E. Johnson		
Checked By:	H. Mosher		