

Prepared For:



Figure 6F

Antrim Gypsum Project

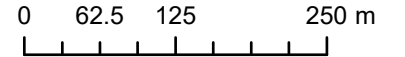
Wetland and Watercourse Field Results

Antrim, NS

- Field Delineated Watercourse
- NSTDB Mapped Watercourse
- Open Water
- UP Mosaic
- WC Mosaic
- WL Mosaic
- Field Delineated Wetland
- NSECC Wetland Inventory
- Aquatic Study
- Project Area



Coordinate System: NAD 1983 CSRS UTM Zone 20N
 Projection: Transverse Mercator
 Datum: North American 1983 CSRS
 Units: Meter



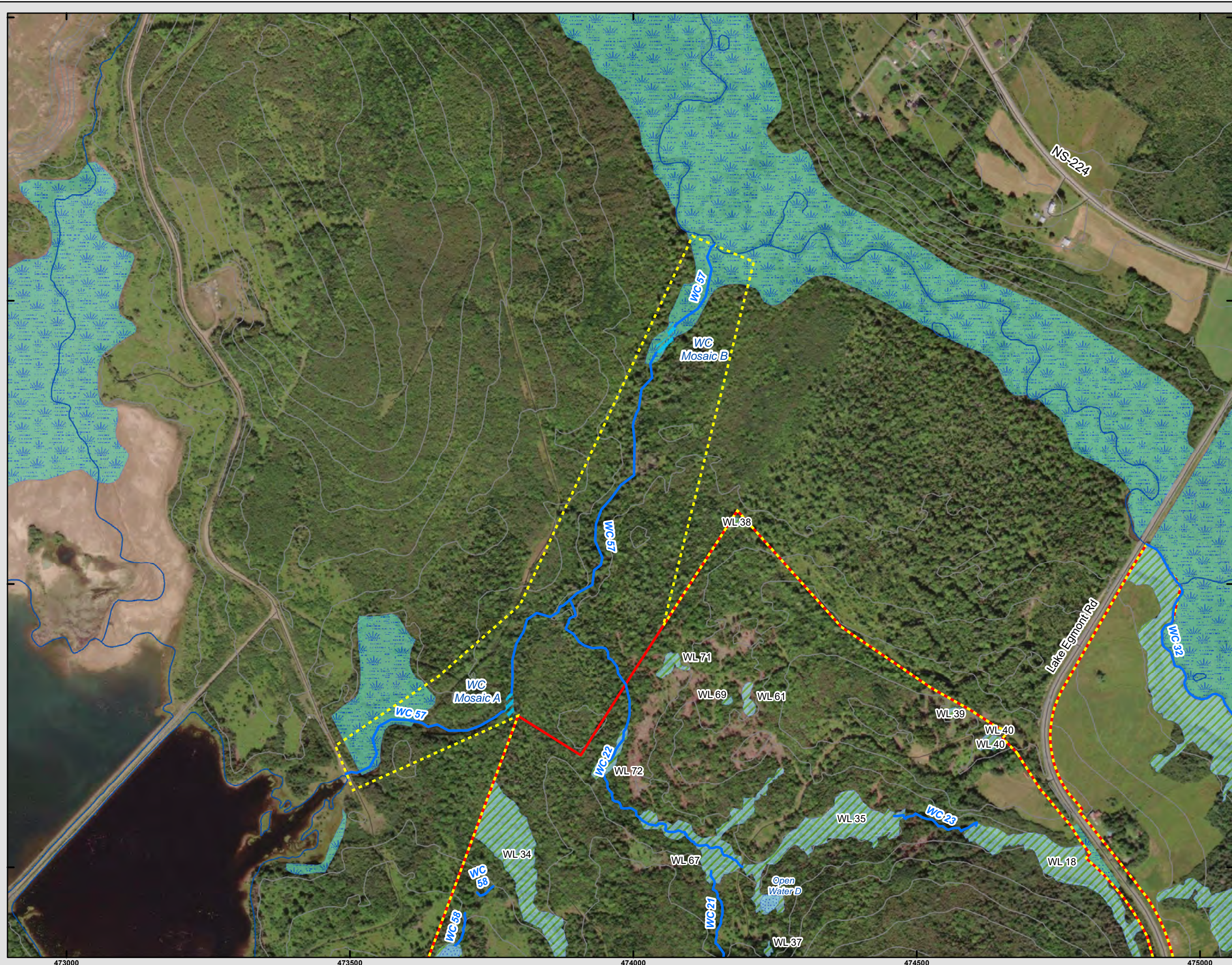
1:6,250 Scale when printed @ 11" x 17"

Drawn By: AS
 Reviewed By: MJ

Project #: 22-630
 Date: 2024-02-23



McCallum Environmental Ltd.



Prepared For:



Figure 6G

Antrim Gypsum Project

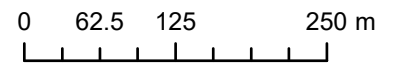
Wetland and Watercourse Field Results

Antrim, NS

- Field Delineated Watercourse
- NSTDB Mapped Watercourse
- Open Water
- UP Mosaic
- WC Mosaic
- WL Mosaic
- Field Delineated Wetland
- NSECC Wetland Inventory
- Aquatic Study
- Project Area



Coordinate System: NAD 1983 CSRS UTM Zone 20N
 Projection: Transverse Mercator
 Datum: North American 1983 CSRS
 Units: Meter



1:6,250 Scale when printed @ 11" x 17"

Drawn By: AS Project #: 22-630
 Reviewed By: MJ Date: 2024-02-23



McCallum Environmental Ltd.

- Species Codes:**
- BBH - Brown Bullhead
 - BKT - Brook Trout
 - BND - Blacknose Dace
 - CHP - Chain Pickerel
 - EEL - American Eel
 - GSH - Golden Shiner
 - NRD - Nothern Redbelly Dace
 - WHS - White Sucker
 - 3SB - Threespine Stickleback
 - 9SB - Ninespine Stickleback

Prepared For:



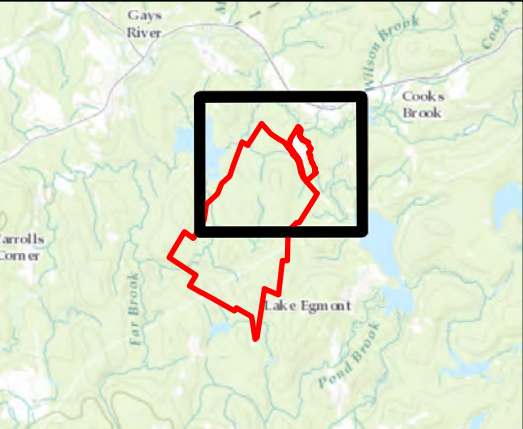
Figure 7A

Antrim Gypsum Project

Fish Collection and Detailed Habitat Methods

Antrim, NS

- Trapping Location
- Closed Electrofishing
- Open Electrofishing
- Field Delineated Watercourse
- NSTDB Mapped Watercourse
- Open Water
- WC Mosaic
- WL Mosaic
- Field Delineated Wetland
- NSECC Wetland Inventory
- Aquatic Study Area
- Project Area



Coordinate System: NAD 1983 CSRS UTM Zone 20N
 Projection: Transverse Mercator
 Datum: North American 1983 CSRS
 Units: Meter



0 125 250 500 m

1:10,000 Scale when printed @ 11" x 17"

Drawn By: AS Project #: 22-630
 Reviewed By: MJ Date: 2024-03-06



McCallum Environmental Ltd.



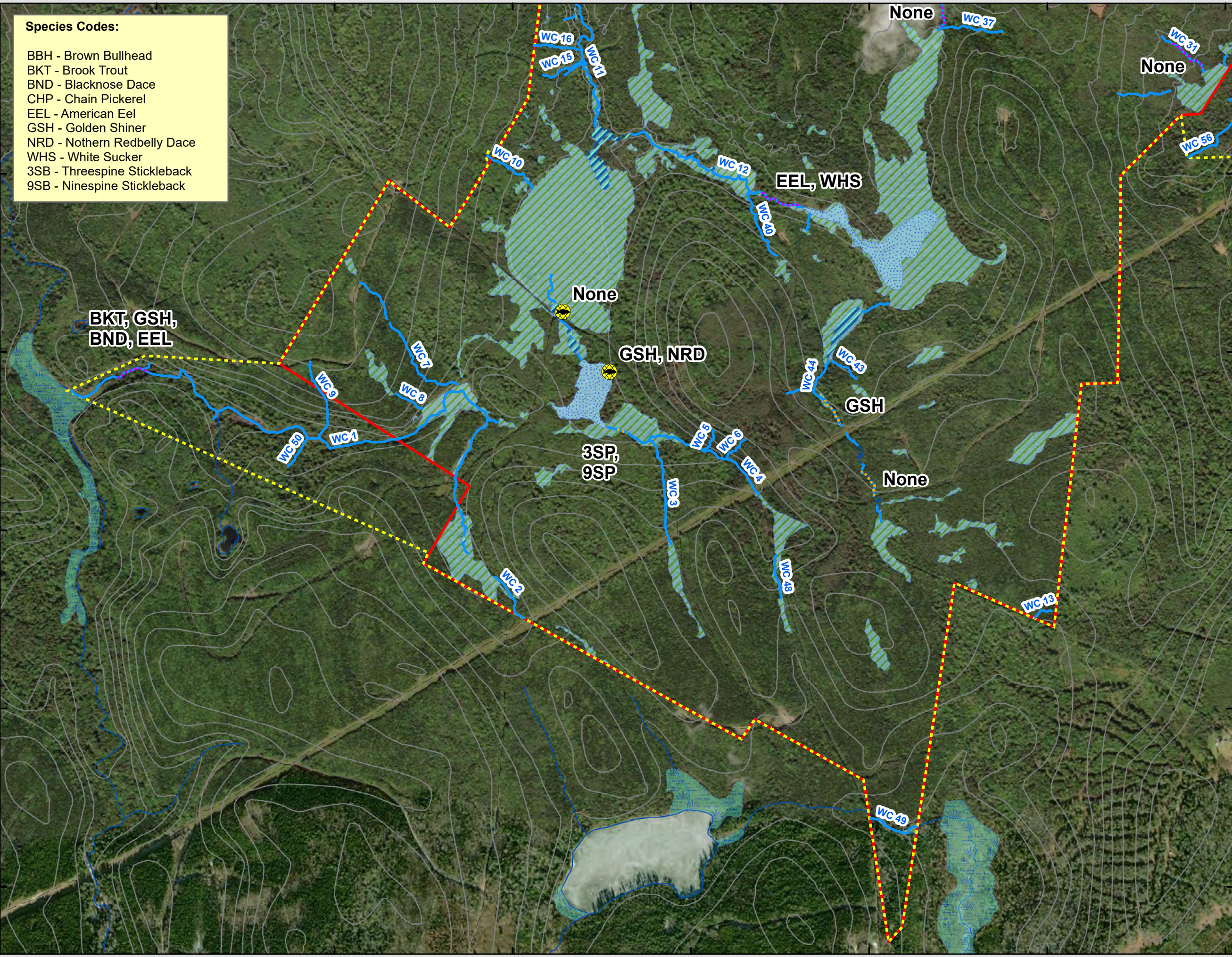
- Species Codes:**
- BBH - Brown Bullhead
 - BKT - Brook Trout
 - BND - Blacknose Dace
 - CHP - Chain Pickerel
 - EEL - American Eel
 - GSH - Golden Shiner
 - NRD - Nothern Redbelly Dace
 - WHS - White Sucker
 - 3SB - Threespine Stickleback
 - 9SB - Ninespine Stickleback

Prepared For:

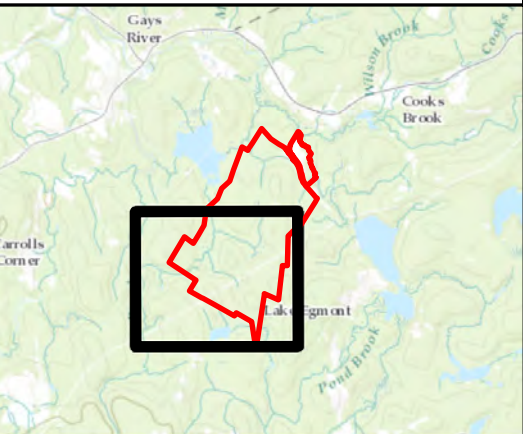


Figure 7B

Antrim Gypsum Project
Fish Collection and Detailed
Habitat Methods
Antrim, NS



- Trapping Location
- Closed Electrofishing
- Open Electrofishing
- Field Delineated Watercourses
- NSTDB Mapped Watercourse
- Open Water
- UP Mosaic
- WL Mosaic
- Field Delineated Wetland
- NSECC Wetland Inventory
- Aquatic Study Area
- Project Area



Coordinate System: NAD 1983 CSRS UTM Zone 20N
 Projection: Transverse Mercator
 Datum: North American 1983 CSRS
 Units: Meter



1:10,000 Scale when printed @ 11" x 17"
 Drawn By: AS Project #: 22-630
 Reviewed By: MJ Date: 2024-03-06



McCallum Environmental Ltd.

Prepared For:



Figure 8

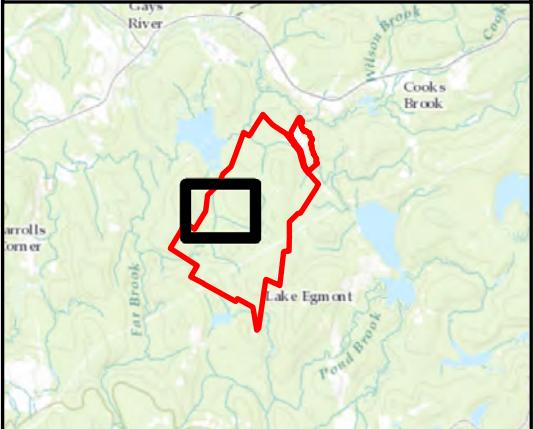
Antrim Gypsum Project

Brook Floater: Habitat Assessment Results

Antrim, NS

Habitat Suitability

- High
- Moderate-High
- Moderate
- Low
- Very Low
- Field Delineated Watercourse
- Trail
- Open Water
- WL Mosaic
- Field Delineated Wetland
- Aquatic Study Area
- Project Area



Coordinate System: NAD 1983 CSRS UTM Zone 20N
 Projection: Transverse Mercator
 Datum: North American 1983 CSRS
 Units: Meter



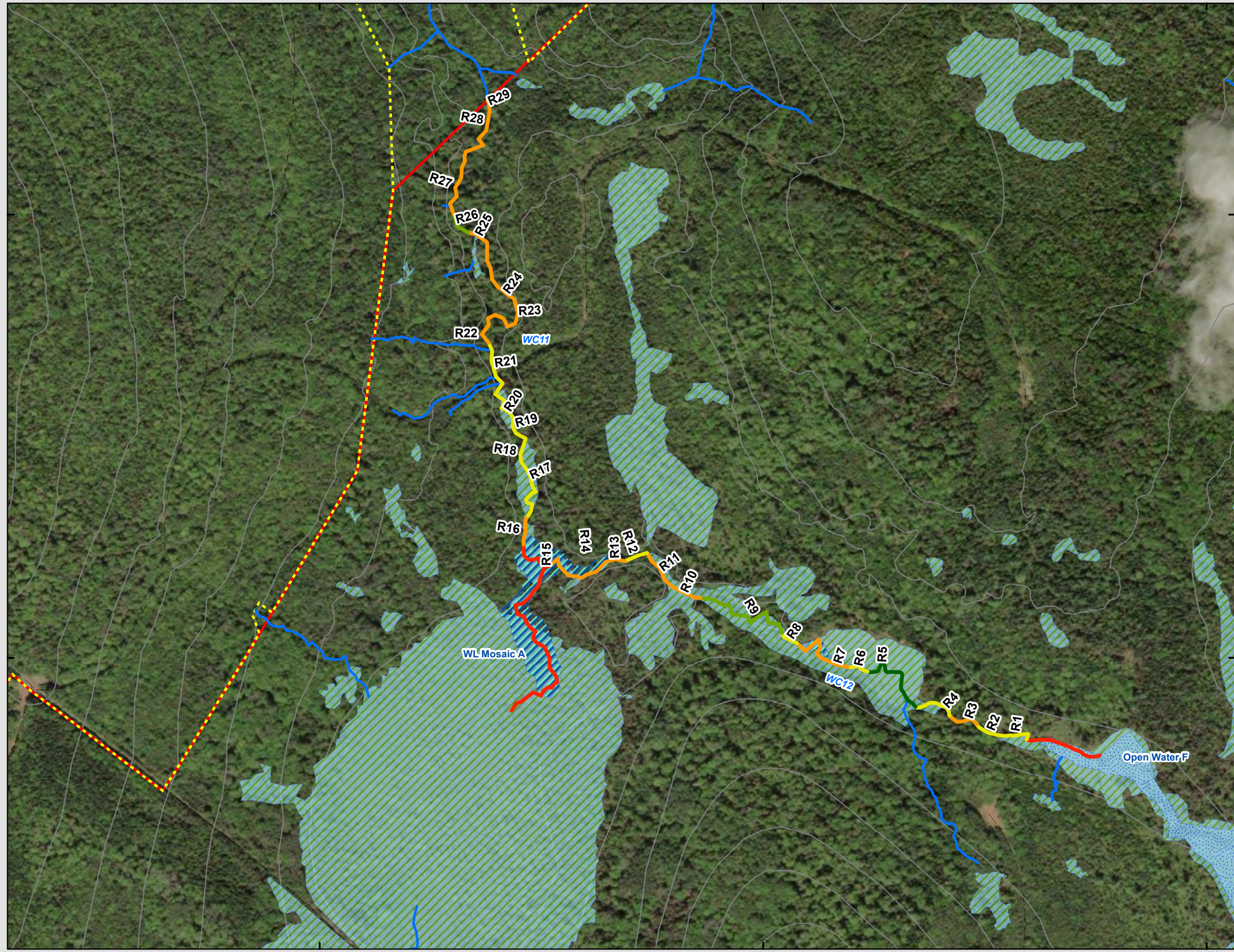
0 50 100 200 m

1:4,000 Scale when printed @ 11" x 17"

Drawn By: AS Project #: 22-630
 Reviewed By: MJ Date: 2024-02-23



McCallum Environmental Ltd.



Prepared For:



Figure 9

Antrim Gypsum Project

Detailed Habitat Assessment Results: Overview

Antrim, NS

- Cascade
- Flat
- Pool
- Rapid
- Riffle
- Riffle-Run
- Run
- Step-Pool
- Field Delineated Watercourse
- NSTDB Mapped Watercourse
- Open Water
- UP Mosaic
- WC Mosaic
- WL Mosaic
- Field Delineated Wetland
- NSECC Wetland Inventory
- Aquatic Study Area
- Project Area



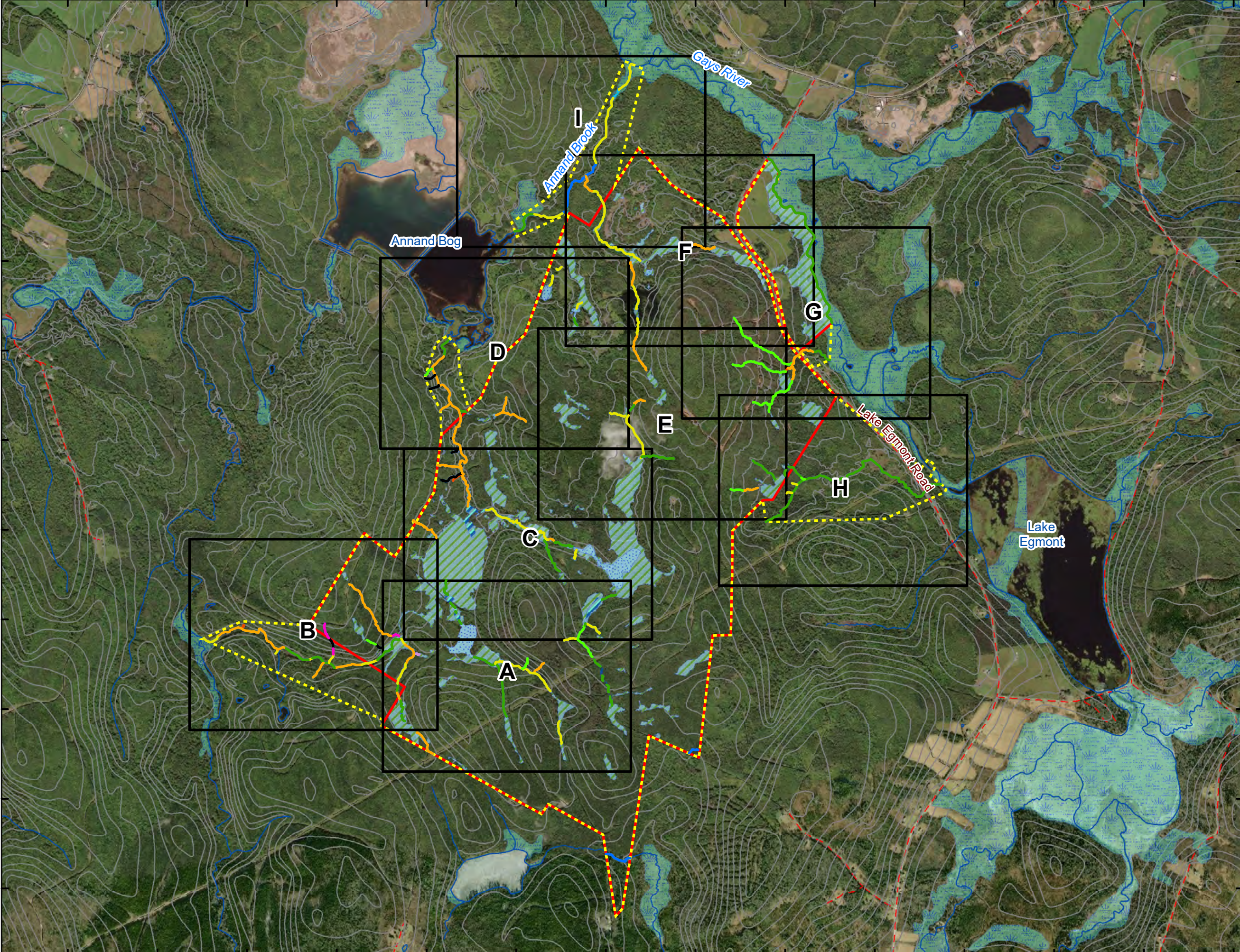
Coordinate System: NAD 1983 CSRS UTM Zone 20N
 Projection: Transverse Mercator
 Datum: North American 1983 CSRS
 Units: Meter



1:20,000 Scale when printed @ 11" x 17"
 Drawn By: AS Project #: 22-630
 Reviewed By: MJ Date: 2024-02-23



McCallum Environmental Ltd.



4985500
4985000
4984500
4984000
4983500
4983000
4982500
4982000
4981500
4981000



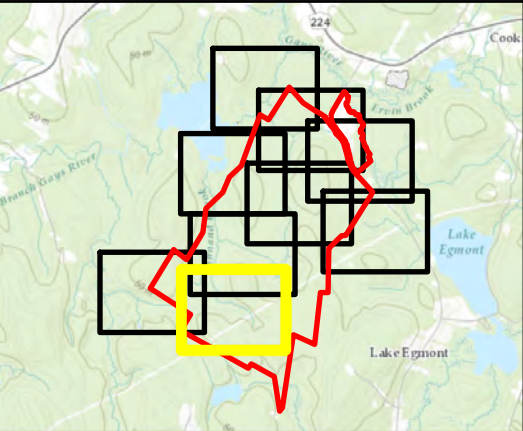
Figure 9A

Antrim Gypsum Project

Detailed Habitat Assessment Results

Antrim, NS

- Flat
- Rapid
- Riffle
- Riffle-Run
- Run
- Step-Pool
- Field Delineated Watercourse
- Open Water
- UP Mosaic
- Wetland Mosaic
- Field Delineated Wetland
- Project Area
- Aquatic Study Area



Coordinate System: NAD 1983 CSRS UTM Zone 20N
 Projection: Transverse Mercator
 Datum: North American 1983 CSRS
 Units: Meter



0 50 100 200 m

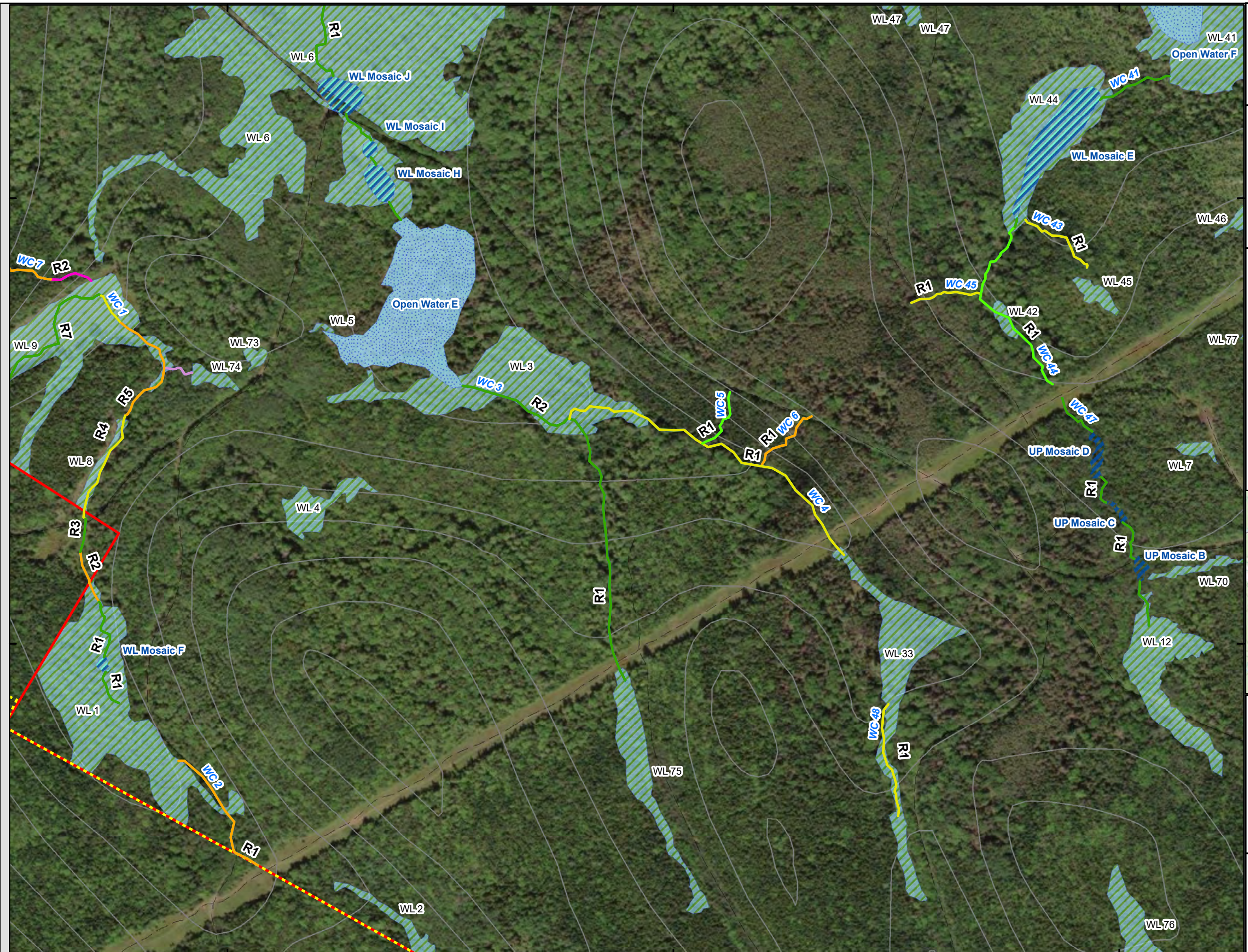
1:4,000 Scale when printed @ 11" x 17"

Drawn By: AS
 Reviewed By: MJ

Project #: 22-630
 Date: 2024-03-06



McCallum Environmental Ltd.



Prepared For:



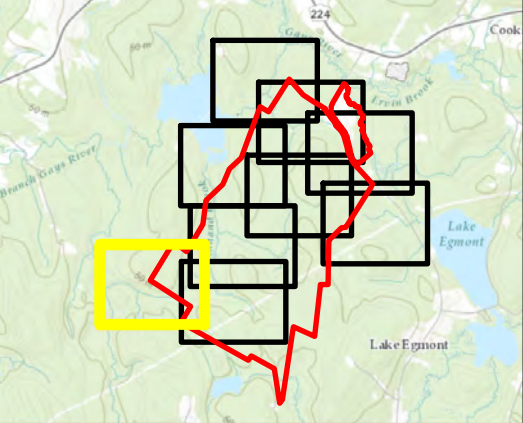
Figure 9B

Antrim Gypsum Project

Detailed Habitat Assessment Results

Antrim, NS

- Cascade
- Flat
- Pool
- Rapid
- Riffle
- Riffle-Run
- Run
- Step-Pool
- Field Delineated Watercourse
- NSTDB Mapped Watercourse
- Wetland Mosaic
- Field Delineated Wetland
- NSECC Wetland Inventory
- Project Area
- Aquatic Study Area



Coordinate System: NAD 1983 CSRS UTM Zone 20N
 Projection: Transverse Mercator
 Datum: North American 1983 CSRS
 Units: Meter



0 50 100 200 m

1:4,000

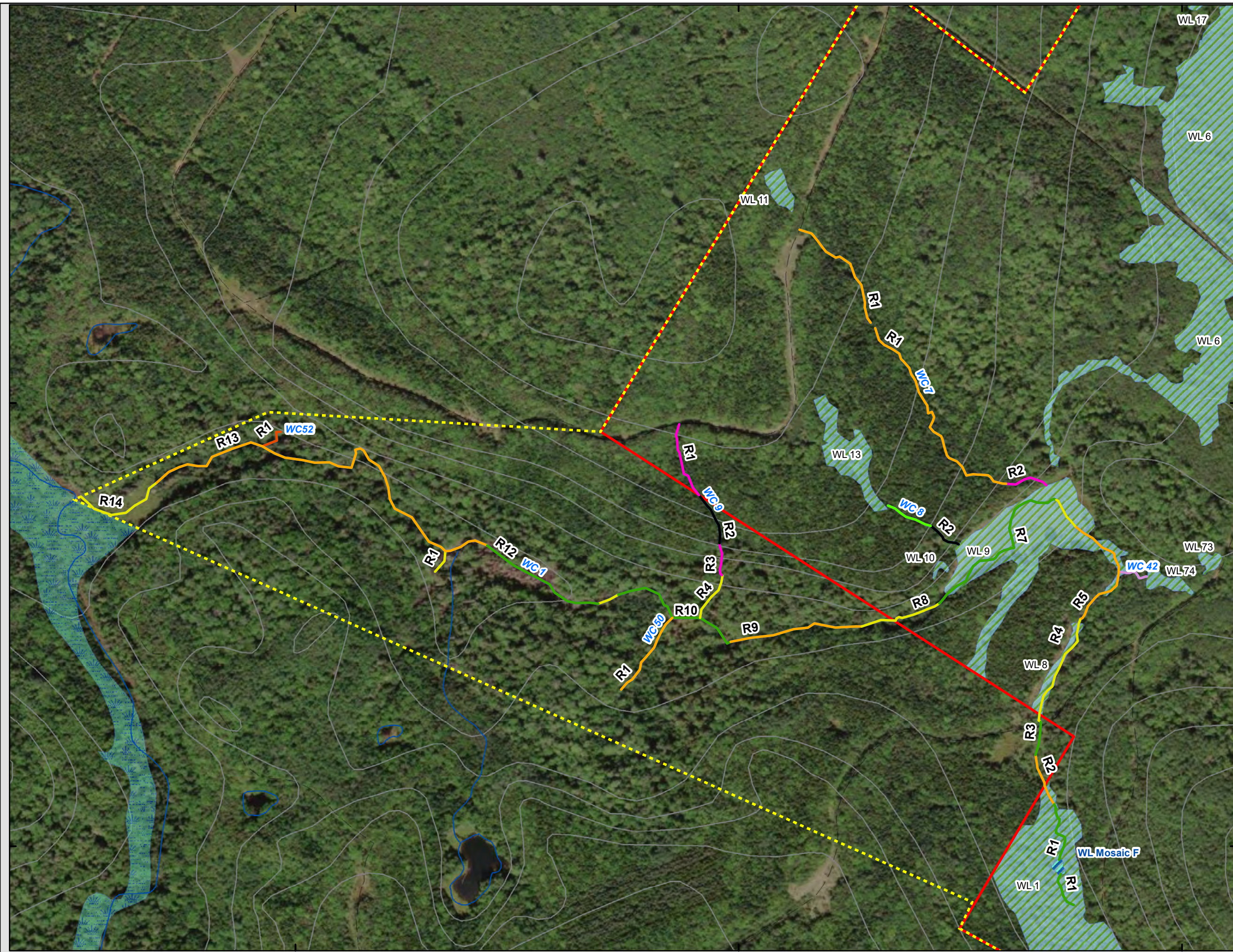
Scale when printed @ 11" x 17"

Drawn By: AS
 Reviewed By: MJ

Project #: 22-630
 Date: 2024-03-06



McCallum Environmental Ltd.



472000

472500

473000

Prepared For:



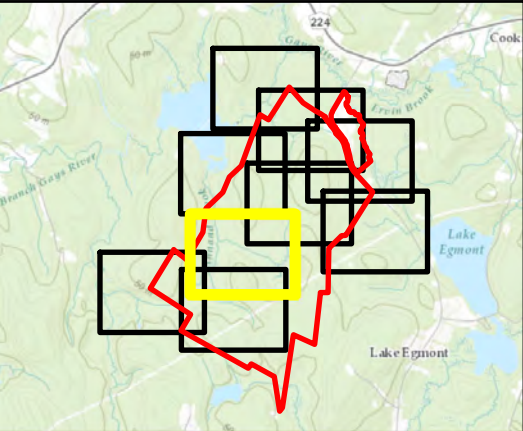
Figure 9C

Antrim Gypsum Project

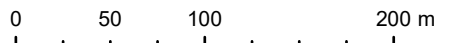
Detailed Habitat Assessment Results

Antrim, NS

- Cascade
- Flat
- Pool
- Riffle
- Riffle-Run
- Run
- Field Delineated Watercourse
- Open Water
- Wetland Mosaic
- Field Delineated Wetland
- Project Area
- Aquatic Study Area



Coordinate System: NAD 1983 CSRS UTM Zone 20N
 Projection: Transverse Mercator
 Datum: North American 1983 CSRS
 Units: Meter

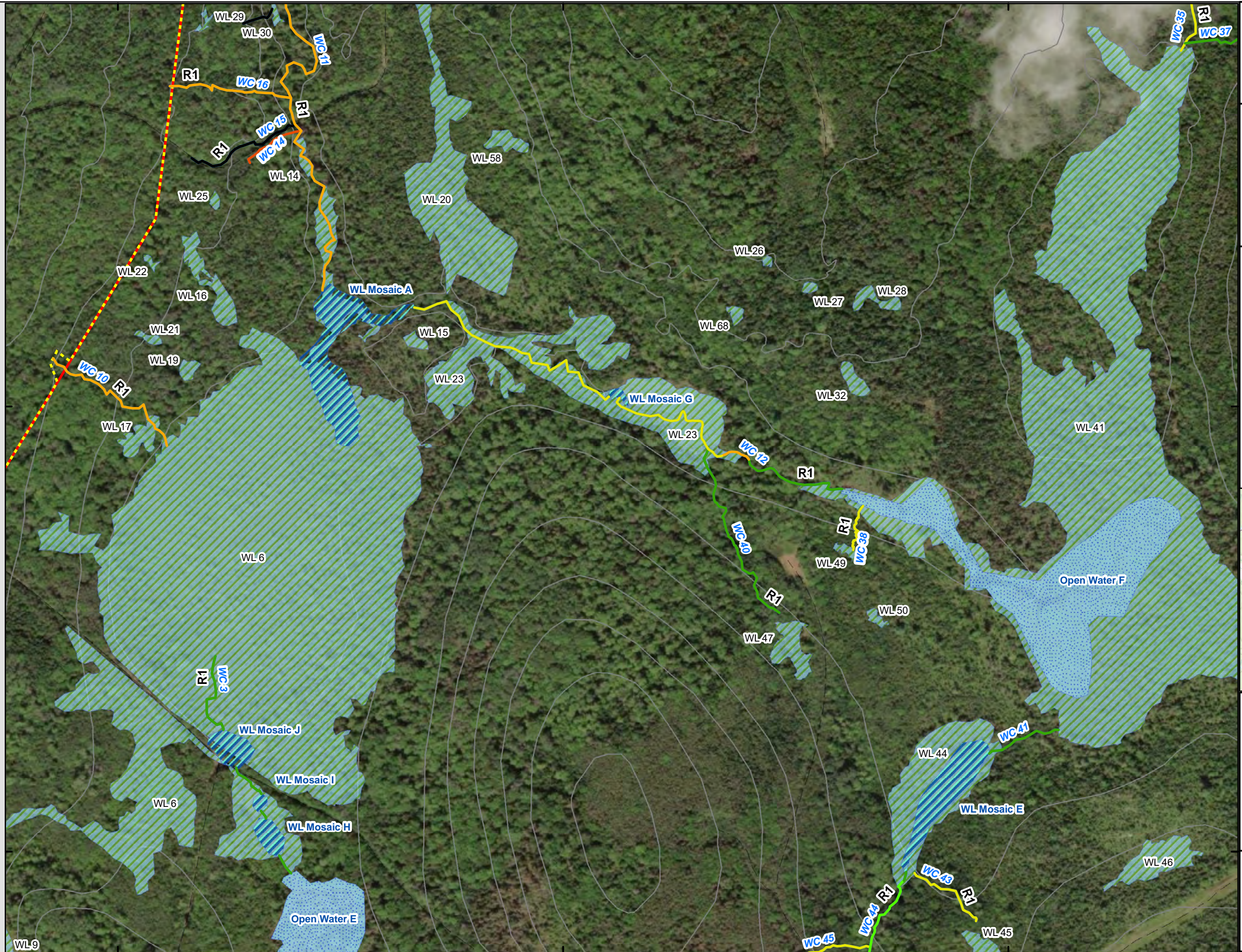


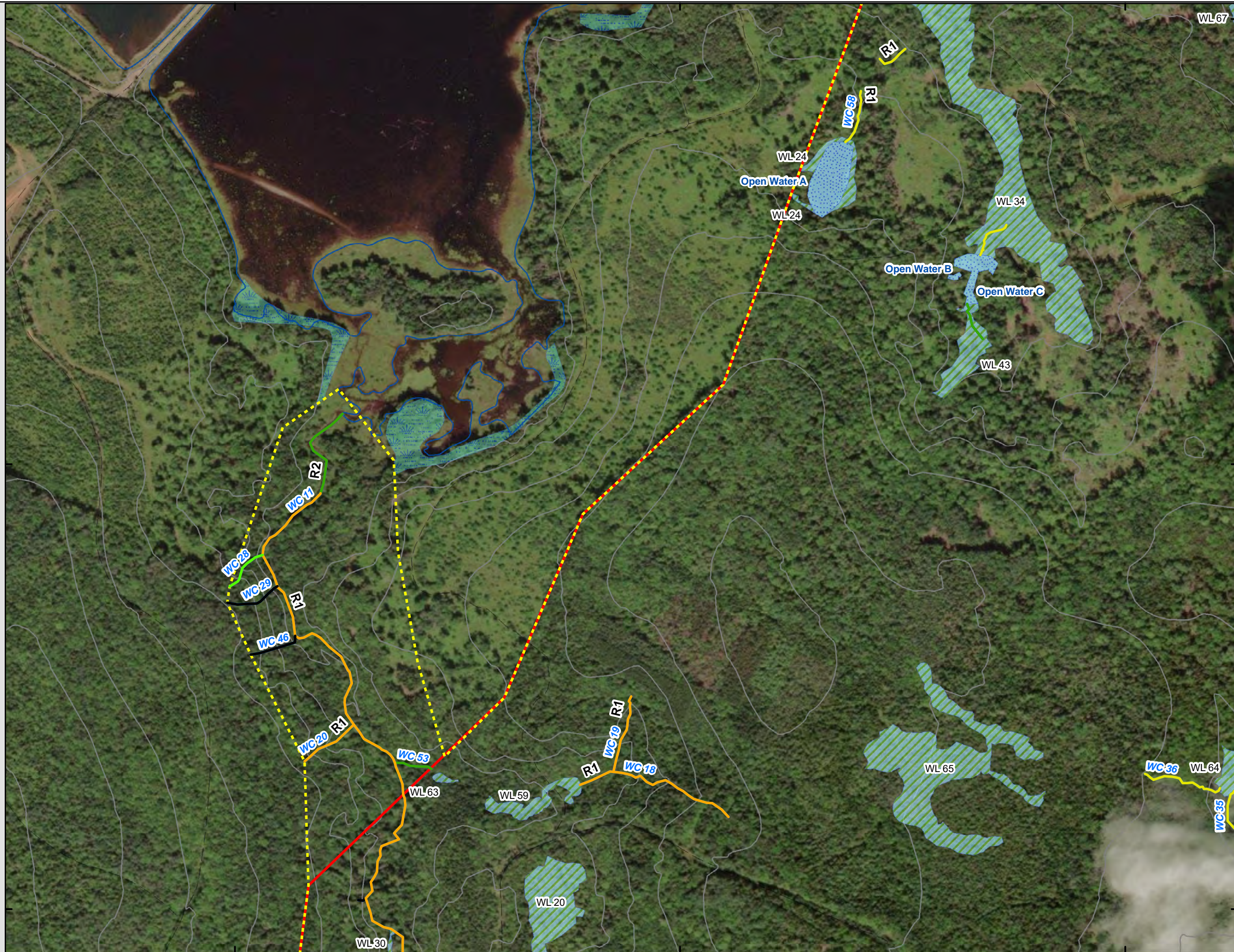
1:4,000 Scale when printed @ 11" x 17"

Drawn By: AS Project #: 22-630
 Reviewed By: MJ Date: 2024-03-06



McCallum Environmental Ltd.





Prepared For:



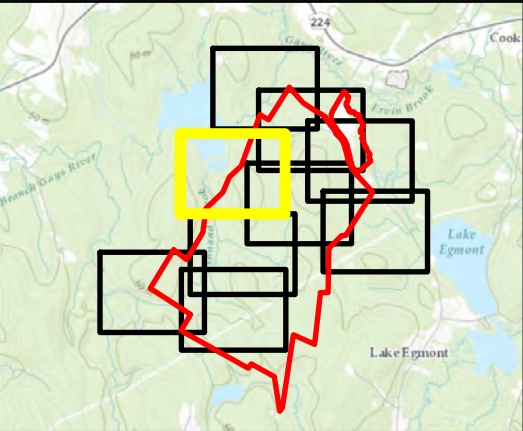
Figure 9D

Antrim Gypsum Project

Detailed Habitat Assessment Results

Antrim, NS

- Cascade
- Flat
- Riffle
- Riffle-Run
- Run
- Field Delineated Watercourse
- NSTDB Mapped Watercourse
- Open Water
- Field Delineated Wetland
- NSECC Wetland Inventory
- Project Area
- Aquatic Study Area



Coordinate System: NAD 1983 CSRS UTM Zone 20N
 Projection: Transverse Mercator
 Datum: North American 1983 CSRS
 Units: Meter



1:4,000 Scale when printed @ 11" x 17"

Drawn By: AS
 Reviewed By: MJ

Project #: 22-630
 Date: 2024-03-06



McCallum Environmental Ltd.

Prepared For:



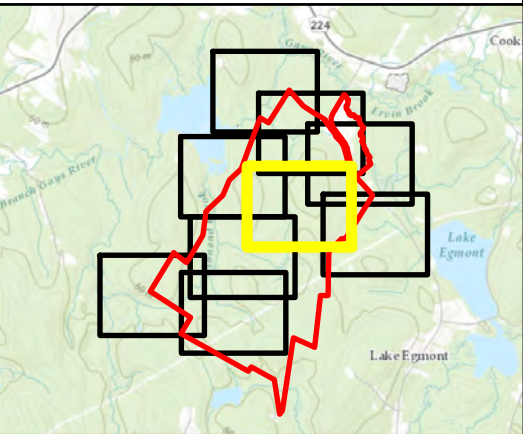
Figure 9E

Antrim Gypsum Project

Detailed Habitat Assessment Results

Antrim, NS

- Flat
- Pool
- Riffle
- Riffle-Run
- Run
- Field Delineated Watercourse
- Field Delineated Wetland
- Project Area
- Aquatic Study Area



Coordinate System: NAD 1983 CSRS UTM Zone 20N
 Projection: Transverse Mercator
 Datum: North American 1983 CSRS
 Units: Meter



0 50 100 200 m

1:4,000 Scale when printed @ 11" x 17"

Drawn By: AS Project #: 22-630
 Reviewed By: MJ Date: 2024-03-06



McCallum Environmental Ltd.



474000

474500

475000 Document Name: 240213_Habitat_Results

Prepared For:



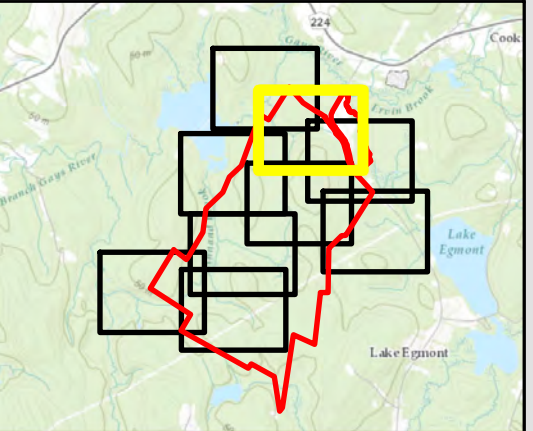
Figure 9F

Antrim Gypsum Project

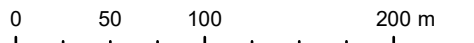
Detailed Habitat Assessment Results

Antrim, NS

- Flat
- Riffle
- Riffle-Run
- Run
- Field Delineated Watercourse
- NSTDB Mapped Watercourse
- Open Water
- WC Mosaic
- Field Delineated Wetland
- NSECC Wetland Inventory
- Project Area
- Aquatic Study Area



Coordinate System: NAD 1983 CSRS UTM Zone 20N
 Projection: Transverse Mercator
 Datum: North American 1983 CSRS
 Units: Meter



1:4,000 Scale when printed @ 11" x 17"

Drawn By: AS Project #: 22-630
 Reviewed By: MJ Date: 2024-03-06



McCallum Environmental Ltd.



Prepared For:



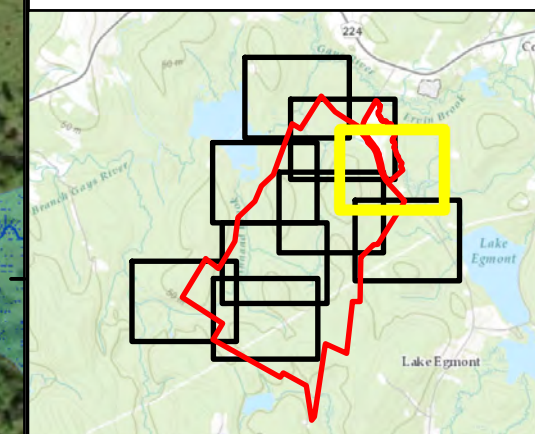
Figure 9G

Antrim Gypsum Project

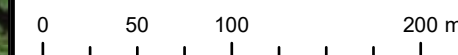
Detailed Habitat Assessment Results

Antrim, NS

- Flat
- Pool
- Riffle
- Riffle-Run
- Field Delineated Watercourse
- NSTDB Mapped Watercourse
- Field Delineated Wetland
- NSECC Wetland Inventory
- Project Area
- Aquatic Study Area



Coordinate System: NAD 1983 CSRS UTM Zone 20N
 Projection: Transverse Mercator
 Datum: North American 1983 CSRS
 Units: Meter



1:4,000

Scale when printed @ 11" x 17"

Drawn By: AS
 Reviewed By: MJ

Project #: 22-630
 Date: 2024-03-06



McCallum Environmental Ltd.



Prepared For:



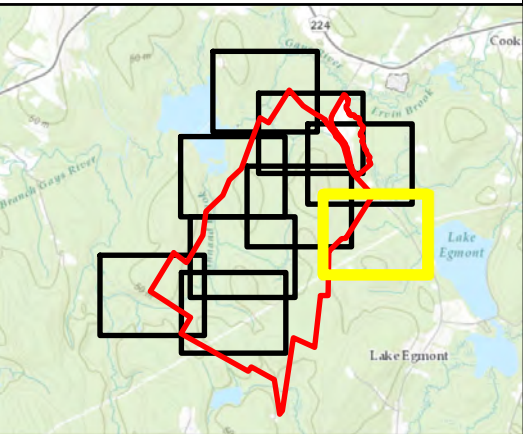
Figure 9H

Antrim Gypsum Project

Detailed Habitat Assessment Results

Antrim, NS

- Flat
- Riffle
- Riffle-Run
- Run
- Field Delineated Watercourse
- NSTDB Mapped Watercourse
- Field Delineated Wetland
- NSECC Wetland Inventory
- Project Area
- Aquatic Study Area



Coordinate System: NAD 1983 CSRS UTM Zone 20N
 Projection: Transverse Mercator
 Datum: North American 1983 CSRS
 Units: Meter



0 50 100 200 m

1:4,000 Scale when printed @ 11" x 17"

Drawn By: AS Project #: 22-630
 Reviewed By: MJ Date: 2024-03-06



McCallum Environmental Ltd.