

# Aulds Cove Wind Project

Green Current Renewable Energy Development Inc. is proposing to develop a wind energy project that will produce 140 to 154 MW of renewable energy to the Nova Scotia power grid. This venture will help Nova Scotia meet its renewable energy goals and contribute to the power supply across the province.



## Project Snapshot

The Project will have 20 to 22 turbines producing 140 to 154 MW of renewable energy, similar to the Point Tupper Generating Station:

- ✓ The capacity to power more than 40,000 Nova Scotian homes.
- ✓ Help Nova Scotia reach its renewable energy target of 80% clean energy by 2030.
- ✓ Contribute to the local economy by bringing job opportunities and generated revenues to the Strait Region.

## Learn more at our Open House

- ✓ Meet with the Project Team.
- ✓ View results of environmental studies.
- ✓ Contribute feedback to environmental assessment underway.

**Tracadie & District Fire Hall**    **Tuesday, November 4**  
10205 Highway 4    3 - 5 PM and 6 - 8 PM

**Aulds Cove Fire Hall**    **Wednesday, November 5**  
13124 Highway 104    3 - 5 PM and 6 - 8 PM



# AULDS COVE WIND PROJECT

Green Current Renewable Energy Development Inc. is proposing to develop a wind energy project that will produce 140 to 154 MW of renewable energy to the Nova Scotia power grid. This venture will help Nova Scotia meet its renewable energy goals and contribute to the power supply across the province.

**GREENCURRENT**

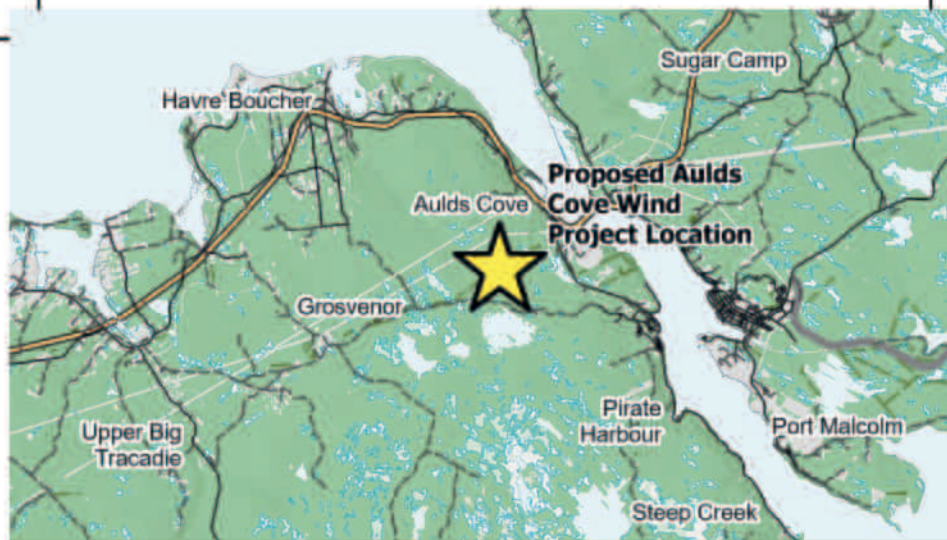
Renewable Energy Development Inc.



[info@greencurrentenergy.ca](mailto:info@greencurrentenergy.ca)







## PROJECT SNAPSHOT

The Project will have 20 to 22 turbines producing 140 to 154 MW of renewable energy, similar to the Point Tupper Generating Station:

- The capacity to power more than 40,000 Nova Scotian homes.
- Help Nova Scotia reach its renewable energy target of 80% clean energy by 2030.
- Contribute to the local economy by bringing job opportunities and generated revenues to the Strait Region.

## LEARN MORE AT OUR OPEN HOUSE



Meet with the Project team.



View results of environmental studies.



Contribute feedback to environmental assessment underway.

**Tracadie & District Fire Hall**  
10205 Highway 4, Monastery  
Tuesday, November 4  
3 - 5 PM and 6 - 8 PM

**Aulds Cove Fire Hall**  
13124 Highway 104, Aulds Cove  
Wednesday, November 5  
3 - 5 PM and 6 - 8 PM



info@greencurrentenergy.ca





# AULDS COVE WIND PROJECT OPEN HOUSE



We acknowledge the ancestral and unceded territory of the Mi'kmaq people. We also acknowledge the Mi'kmaq as the past, present, and future caretakers of this land, Mi'kmaki.

We recognize that African Nova Scotians are a distinct people whose histories, legacies and contributions have enriched that part of Mi'kma'ki known as Nova Scotia for over 400 years.





Renewable Energy Development Inc.

Green Current Renewable Energy Development Inc. is a locally owned company based in Southwest Mabou, Nova Scotia. Our team is made up of home-grown, seasoned engineers and business professionals with over 80 years of combined experience in the development, construction, and operation of wind energy projects across the province.

We live, work, and do business here, and we are proud to contribute not only to the local economy, but also to Nova Scotia's clean energy future right here at home.



# PROJECT BENEFITS



## The Aulds Cove Wind Project will:



**Accelerate Climate Goals:** Contributes to Nova Scotia's 2030 targets for 80% renewable energy and a 90% cut in electricity-generated GHG emissions.



**Boost Energy Security:** Enhances local grid security by providing a reliable energy source with zero fuel costs.



**Improve Grid Stability:** Strengthens the provincial network, reducing risks associated with central outages.



**Reduce Air Pollution:** Reduce local and widespread pollution generated through burning fossil fuels for our energy supply.



## The Aulds Cove Wind Project will benefit people both locally and provincially through:

- **Local Employment:** Creates local construction and long-term maintenance jobs in the Strait Region.
- **Local Sourcing:** Supports existing local businesses by prioritizing regional suppliers.
- **Port Activity:** Uses the local Port of Mulgrave for importing major turbine components.
- **Community Funding:** Provides direct financial benefits to nearby communities through a Community Benefits Fund.
- **Municipal Tax Revenue:** Tax revenue paid to the Municipality of the District of Guysborough.
- **Infrastructure Compensation:** Offers financial contributions to the Town of Mulgrave for infrastructure use (e.g., access routes).
- **Private Land Payments:** Pays benefits directly to participating private property owners within the project area.



# PROJECT DESCRIPTION



Green Current Renewable Energy Development Inc. is proposing to develop a wind energy project with 20 to 22 wind turbines that will produce up to 154 MW of renewable energy to the Nova Scotia power grid. This venture will help Nova Scotia meet its renewable energy goals and contribute to the power supply across the province.

## Candidate turbine model

- Nordex N163 at 7 megawatts capacity
- 199.5 m from base to tip of blade
- Three blades with a variable rotor speed
- Remotely and continuously monitored

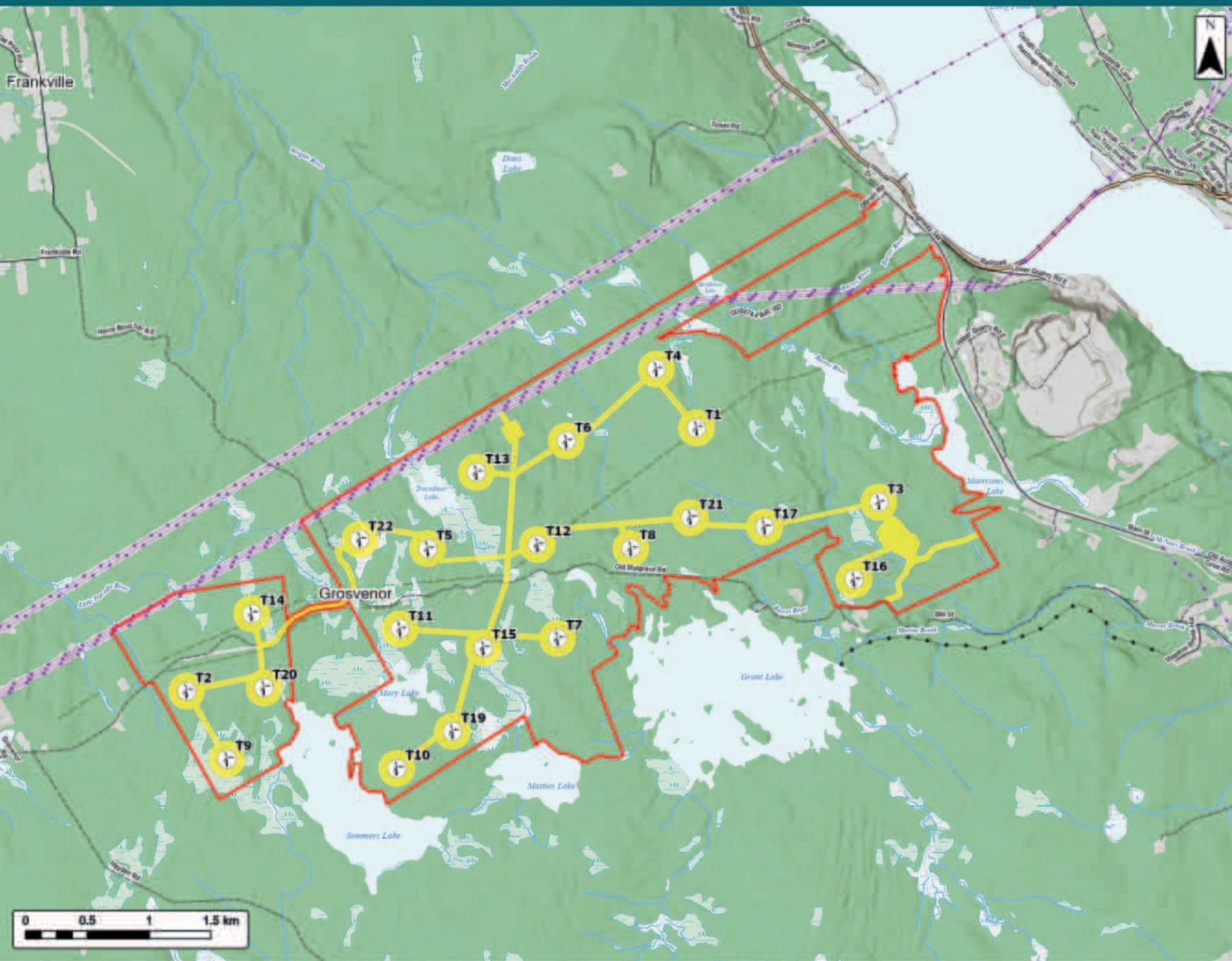


## Other Project components

- **Access Roads:** Compact design minimizes total road length with few access points via Old Mulgrave Road.
- **Turbine Pads:** Built to the minimum size required for infrastructure and safety.
- **Substation:** Located strategically near existing Nova Scotia Power transmission lines.
- **Laydown Yard:** Sited exclusively on already cleared land.
- **O&M Building:** Constructed within the laydown yard to avoid additional clearing.







# Aulds Cove Wind Project Site Overview

**GREENCURRENT**  
Renewable Energy Development Inc.

Study Area

Assessment Area

Proposed Turbine Location

Utilities (Blue)

Existing Pipeline

Existing Transmission Lines

Transportation

Trans-Canada Highway

Road

Unpaved Road

Water Features

Mapped Stream

Mapped Intermittent Streams

Mapped Lakes and Rivers

Mapped Wet Areas



Coordinate System: NAD 1983 UTM Zone 18N

Projection: UTM

Units: Meters

Source: Nova Scotia, Canada

Scale: 1:30,000

Drawn By: K. Wallace

Checked By: D. Foster

Date: 2025-10-28

Project #: 24-10440

Drawing #: 1

**strum**  
CONSULTING





# FISH, WETLANDS AND WATERCOURSES

Terrestrial assessment include wetland and watercourse assessment, in which wetland and watercourses were delineated throughout the site and incorporated into Project design to minimize design impacts.



## Fish and Fish Habitat

Survey method: Fish collection and detailed habitat

### Notable Species Near Study Area

- 🐟 Atlantic salmon
- 🐟 Brook trout
- 🐟 Northern redbelly dace
- 🐟 White sucker

## Wetlands and Watercourses

Survey method: Wetland and watercourse delineation

### Notable Data

- 91 wetlands delineated
- Several potential wetlands of special significance based on observations of flora and/or avian species at risk
- 15 watercourses delineated

## Impacts and Mitigations

- » Up to 6.8 ha of wetlands may be impacted, micro-siting during detailed design will minimize total impacts where possible.
- » Watercourse impacts are expected from road crossings only, with up to nine road crossings to maintain fish passage through existing pathways.
- » Following wetland and watercourse alteration permitting process where impacts are unavoidable.
- » Post-construction wetland monitoring to facilitate adaptive management and safeguard ecological integrity on site.
- » Conducting work affecting watercourses between between June 1<sup>st</sup> to September 30<sup>th</sup> to avoid sensitive periods in fish life cycles.
- » Develop an Erosion and Sediment Control Plan.



# TERRESTRIAL FAUNA

## Survey Methods

Winter tracking (WT)  
Pellet group inventory (PGI)  
Trail camera deployment

## Timeline

16 days of field assessment between WT and PGI.

- Winter tracking: February 2025
- PGI: March/April 2025
- Trail cameras: April - September 2025

## Notable Data

- Black Bear
- Porcupine
- Bobcat
- Coyote
- Beaver
- Raccoon
- Red Squirrel
- Snowshoe Hare
- White-tailed Deer

## Key Mitigations

- Minimize clearing of wildlife habitat by using previously disturbed areas and existing roads.
- Maintain vegetated buffers around wetlands and watercourses to support habitat connectivity.
- Encourage revegetation in cleared footprints to limit habitat fragmentation.
- Train staff on wildlife dangers and site-specific hotspots.
- Minimize project traffic to reduce wildlife collisions and stress.
- Implement noise controls (e.g., mufflers) on all machinery during construction and operation.
- Limit project lighting to the minimum necessary for safe operation.



# TERRESTRIAL FLORA & VEGETATION

## Survey Methods

Rare vascular plant & lichen surveys  
Old growth assessments (OGA)  
Vegetation community assessments

## Timeline

10 days of field efforts for flora, OGA, and vegetation community assessments.

- Rare plants/lichen and veg community: March - September 2025
- OGA: August 2025 on Crown land forested parcels

## Notable Data

- 4 rare vascular plants:
  - American beech
  - Black ash
  - Loesel's twayblade
  - Yellow lady slipper
- 2 rare lichens: blue felt lichen & frosted glass whiskers
- No OG found
- 19 different vegetation communities identified

## Key Mitigations

- Avoid impacting observed flora species at risk (SAR) during design phase.
- Avoid impacting flora species of conservation interest (SOCi) where possible.
- Prioritize using previously altered areas or existing roads to minimize overall cleared areas.
- Educate Project personnel about the potential for plant/lichen SAR/SOCi.
- Actively re-vegetate cleared areas following construction and decommissioning using native seed mixes.
- Consult with Department of Natural Resources if unexpected SAR/SOCi is encountered during Project's phases. If encountered, additional mitigations may be implemented.





# AVIFAUNA/BATS



## BATS

- No critical bat habitat or overwintering sites (hibernacula) were identified near the Project.
- The discovery of two potential bat roosts led to the removal of proposed turbines from the immediate northeast corner.
- Monitoring with the use of acoustic recording devices at locations likely to support bats over 244 nights recorded an average of 3 bat passes per night (755 total), of which:
  - 43% were resident species (Myotis)
  - 32% were migratory species
  - 25% could not be identified to the species level



## AVIFAUNA

- Survey methods conducted in the 2024 and 2025 survey period include: point counts, diurnal watch counts, area searches, and specific nightjar surveys all conducted during the spring, fall, and breeding season.
- Observation of 8,918 birds representing 129 species, including species at risk:
  - Canada warbler and olive-sided flycatcher were most common also with barn swallow, common nighthawk, eastern-wood-pewee, and more.
- Passive monitoring includes Radar and Acoustic monitoring, with monitors deployed throughout the site.
  - Nighttime acoustic monitors confirmed the presence of some of the above SAR including Canada warbler, bobolink, and common nighthawk.

### KEY MITIGATIONS

- Development of operational bat monitoring program.
- Vegetation clearing outside of the active bat season where possible.
- Avoid bat habitat to the extent possible, including the area with identified potential roosts.
- Use of noise control on construction equipment to reduce disturbance.
- Use of motion-activated lights on ground-based infrastructure where appropriate to minimize light pollution and reduce attraction of insects, thereby reducing bat attraction to the area.



### KEY MITIGATIONS

- Ongoing monitoring: second year of radar and acoustic studies pre-operation.
- Development of operational bird monitoring program.
- Siting: avoiding placing turbines within topographic funnels like lake or river valleys where bird movements may concentrate.
- Construction: conduct nest sweeps by qualified biologists before clearing during the breeding season or avoid entirely if possible. Minimize loss of large diameter decaying trees.
- A site-specific post-construction wildlife management plan will be developed in consultation with regulators and other relevant parties.
- Various lighting and noise mitigations (e.g., mufflers on loud vehicles, light shielding, use of motion-activated, LED lights when applicable for employee safety, turning off high intensity lighting at night where not otherwise required, etc.).



# NOISE & SHADOW FLICKER BACKGROUND

The Project will be designed in accordance with the Province of Nova Scotia's Environmental Assessment requirements for Wind Power Projects.

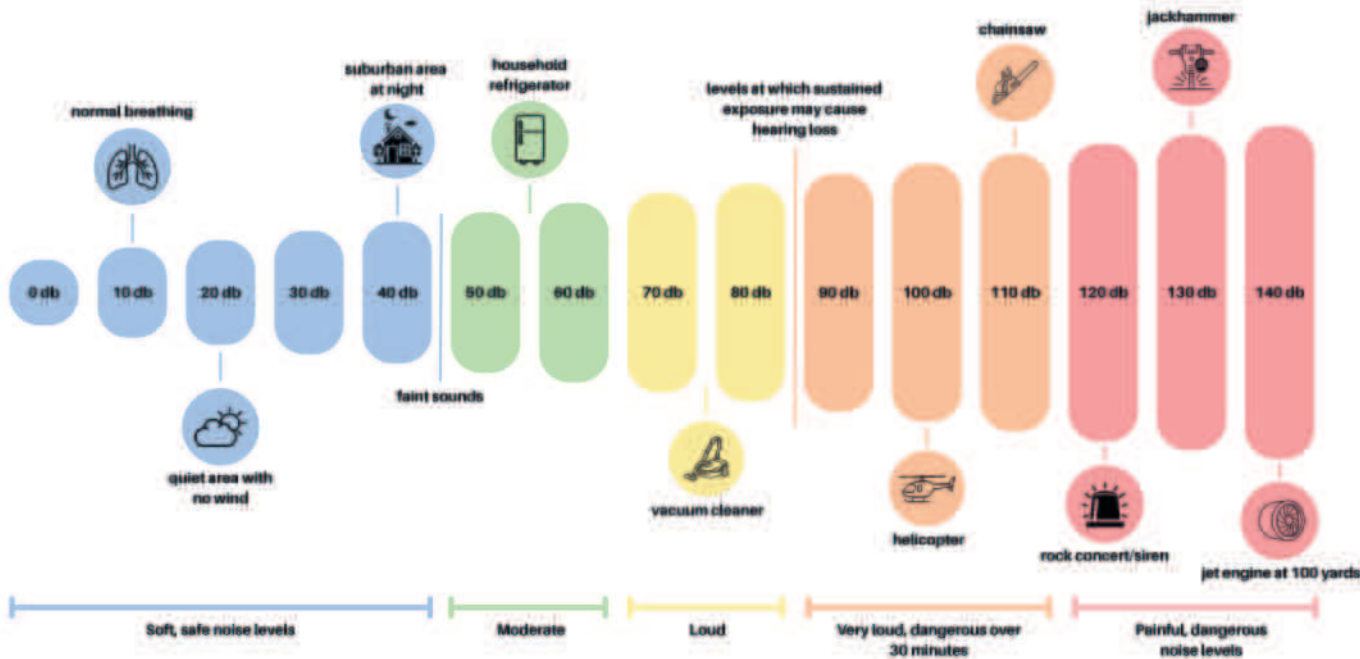
Noise and shadow flicker studies were conducted to model cumulative noise and shadow flicker effects generated by turbine operation from both the proposed Project and nearby existing and planned turbines on nearby receptors (residences).

## Noise

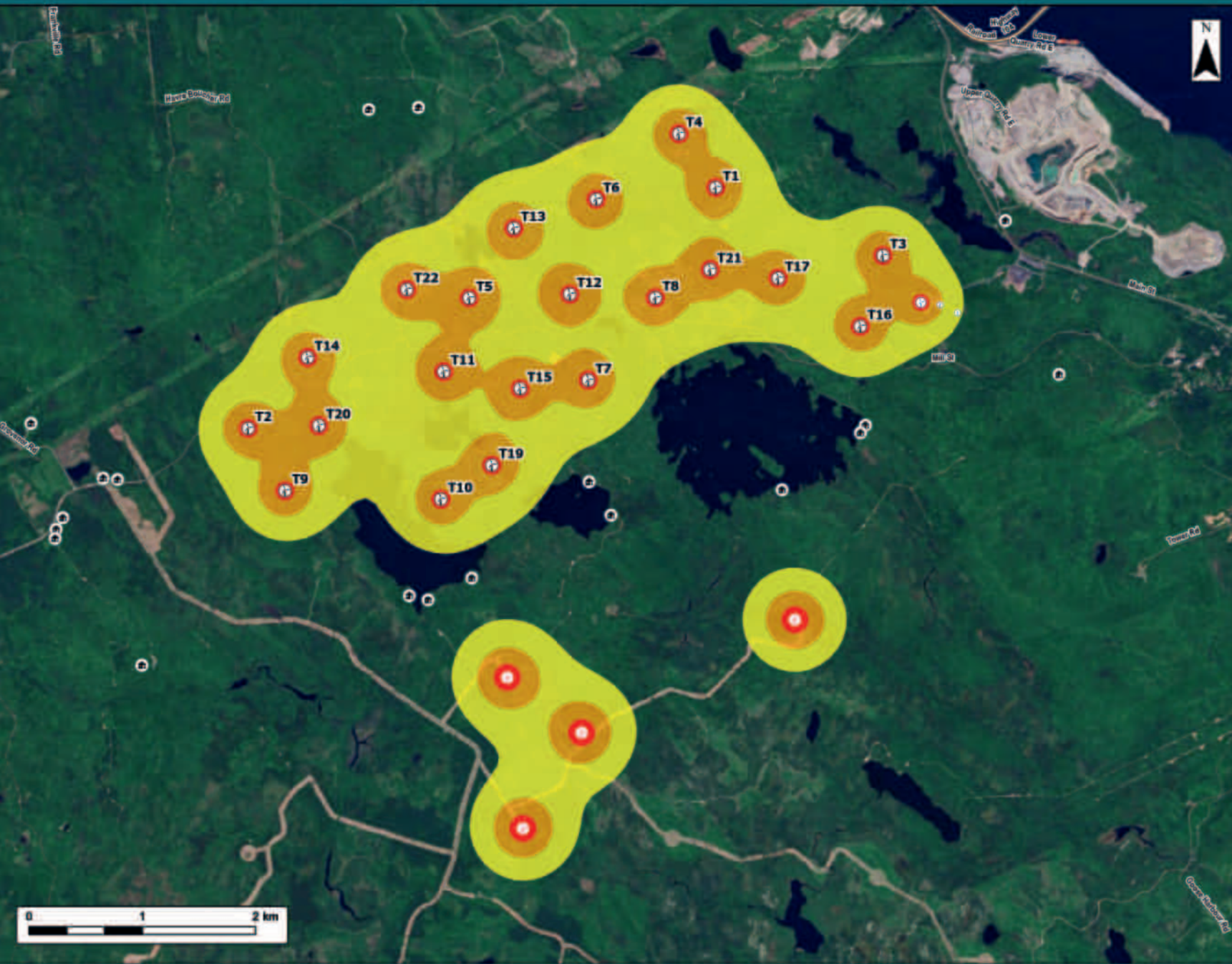
- Noise modelling indicates that the Project will comply with regulatory limits.
- The noise-modelling study indicates that cumulative noise level, including turbine-generated noise, will not exceed 40 dBA at any existing non-participating receptors.

## Shadow Flicker

- Shadow flicker modeling indicates that the Project will comply with regulatory limits.
- There are no predicted exceedances of 30 minutes/day and/or 30 hours/year at any existing receptors, using realistic model parameters.







## Aulds Cove Wind Project

Noise Model

**GREENCURRENT**  
Renewable Energy Development Inc.

Proposed Turbine Location:

Celtic Current Wind Turbine Location

Goose Harbour Lake Wind Farm Turbine Location

Potential Receptor/Dwelling:

**Predicted Noise Level (dBA)**

40-44

45-49

50+

**Transportation**

Trans-Canada Highway

Road

Unpaved Road

Note: An ambient noise value of 35 dBA was included at each receptor. Noise was modelled using using WindPRO v4.0 software using the ISO 9613-2 General noise model.

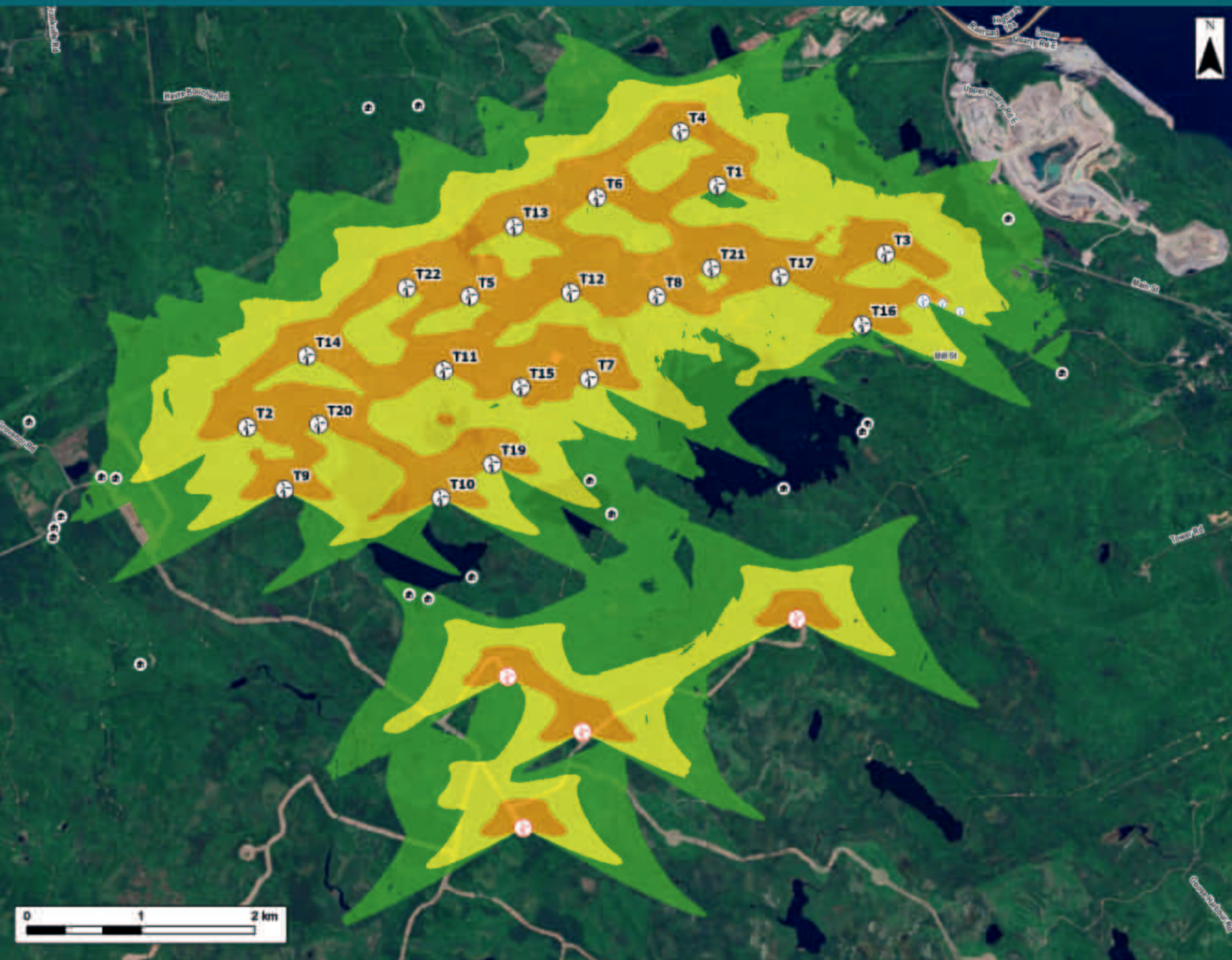


Coordinate System: NAD 83 UTM Zone 18N  
Datum: NAD 83  
Units: Metres  
Projection: UTM  
Datum: NAD 83  
Units: Metres  
Projection: UTM

Date:	2025-10-30	Project #:	24-10440
Scale:	1:32,500	Drawing #:	2
Drawn By:	E. Johnson		
Checked By:	D. Foster		

**strum**  
CONSULTING





# Aulds Cove Wind Project

Shadow Flicker Hours per Year

**GREENCURRENT**  
Renewable Energy Development Inc.

Proposed Turbine Location

Existing Current Wind Turbine Location

Goose Harbour Lake Wind Farm Turbine Location

Potential Receptor/Dwelling

Predicted Shadow Flicker Hours / Year

10-29

30-59

60+

Transportation

Trans-Canada Highway

Road

Unimproved Road

Note: Shadow flicker was modelled using WindPRO v4.0 software. Worst case scenario shadow flicker assumes the sun is shining from sunrise to sunset 365 days of the year. Real case scenario incorporates historical sunlight data from the nearest Environment Canada weather station.



Legend: 10-29 30-59 60+  
Trans-Canada Highway Road Unimproved Road  
Proposed Turbine Location Existing Current Wind Turbine Location  
Goose Harbour Lake Wind Farm Turbine Location Potential Receptor/Dwelling

Date:	2025-10-30	Project #:	24-10440
Scale:	1:32,500	Drawing #:	3
Drawn By:	E. Johnson		
Checked By:	D. Foster		

**strum**  
CONSULTING





## AULD'S COVE WIND PROJECT

**GREENCURRENT**  
Renewable Energy Development Inc.

### TECHNICAL INFORMATION

Visual Simulation Location:  
View Coordinates:

Port Hawkesbury Visitor Center  
Latitude: 45.647°N  
Longitude: 61.4063269°W  
Easting: 624184 m  
Northing: 5056063 m  
3.6km

Distance to Nearest Turbine:  
Direction of View:

Camera Make/ Model:  
Lens:

Image Resolution:  
Weather Conditions:

Date of Photo:  
Time of Photo:

Photo Credit:

Southwest, 230°

NIKON Z62

50 mm

7744 x 2336

Clear

2025/08/06

10:37

Strum Consulting



Proposed Turbine Location

Photo Location

Photo Field of View



### References

1. Data Sources: GeoBasis, GNIF
2. Base Map: Esri, DigitalGlobe, GeoEye, GeoEye, GeoGraphics, IGN, Intermap, Inc., USDA, AeroGRID, IGN, and the GIS User Community
3. Projection: NAD83 UTM Zone 18

Date:	2025-10-28	Project #:	24-10440
Drawn By:	E. Johnson	Drawing #:	4A
Checked By:	D. Foster		

**strum**  
CONSULTING





## AULD'S COVE WIND PROJECT

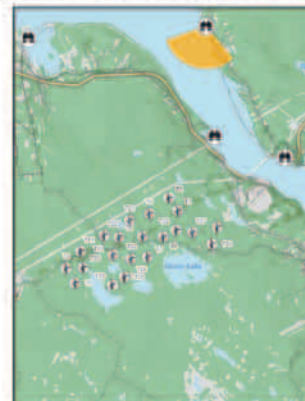
**GREENCURRENT**  
Renewable Energy Development Inc.

### TECHNICAL INFORMATION

Visual Simulation Location:  
View Coordinates:

Celtic Shores Trail  
Latitude: 45.6913262°N  
Longitude: 61.4426252°W  
Easting: 621259 m  
Northing: 5060932 m  
6.5 km  
Southwest, 191°  
NIKON Z62  
50 mm  
9606 x 3018  
Clear  
2025/08/06  
12:44  
Strum Consulting

Distance to Nearest Turbine:  
Direction of View:  
Camera Make/ Model:  
Lens:  
Image Resolution:  
Weather Conditions:  
Date of Photo:  
Time of Photo:  
Photo Credit:



Proposed Turbine Location  
Photo Location  
Photo Field of View



### References

1. Data Sources: Google Maps, CIBAC
2. Sources: Esri, DigitalGlobe, GeoEye, Earthstar Geographics, CNR/Airbus DS, USDA, AeroGRID, IGN, and the GIS User Community
3. Projection: NAD83 UTM Zone 20

Date: 2025-10-28	Project #: 24-10440
Drawn By: E. Johnson	Drawing #: <b>4B</b>
Checked By: D. Foster	

**strum**  
CONSULTING





## AULD'S COVE WIND PROJECT

**GREENCURRENT**  
Renewable Energy Development Inc.

### TECHNICAL INFORMATION

Visual Simulation Location:	Cove Hotel & Restaurant
View Coordinates:	Latitude: 45.6546277°N Longitude: 61.4395762°W Easting: 621576 m Northing: 5056860 m
Distance to Nearest Turbine:	2.8 km
Direction of View:	Southwest, 193°
Camera Make/ Model:	NIKON Z62
Lens:	50 mm
Image Resolution:	13203 x 3786
Weather Conditions:	Clear
Date of Photo:	2025/08/06
Time of Photo:	12:02
Photo Credit:	Strum Consulting



Proposed Turbine Location  
Photo Location  
Photo Field of View

0 2.5 5 7.5 m  
SCALE 1:100 000



### References

1. Data Sources: Geotitles, Cloud
2. Basemap: Esri, DigitalGlobe, GeoEye, Earthstar Geographics, CNES/Airbus DS, USDA, USGS, AeroGRID, IGN, and the GIS User Community
3. Projection: NAD83 UTM Zone 20

Date: 2025-10-28	Project #: 24-10440
Drawn By: E. Johnson	Drawing #: <b>4C</b>
Checked By: D. Foster	

**strum**  
CONSULTING





## AULD'S COVE WIND PROJECT



### TECHNICAL INFORMATION

Visual Simulation Location:  
View Coordinates:

Havre Boucher Harbour  
Latitude: 45.6885532°N  
Longitude: 61.5273318°W  
Easting: 614668 m  
Northing: 5060500 m  
7.7 km

Distance to Nearest Turbine:  
Direction of View:  
Camera Make/ Model:  
Lens:  
Image Resolution:  
Weather Conditions:  
Date of Photo:  
Time of Photo:  
Photo Credit:

Southeast, 174°  
NIKON Z62  
50 mm  
13203 x 3786  
Clear  
2025/08/06  
12:02  
Strum Consulting



Proposed Turbine Location  
Photo Location  
Photo Field of View

0 25 50 75  
SCALE: 1:100,000



### References

1. Data Sources: OpenStreetMap, CNIG
2. Base Maps: Esri, DigitalGlobe, GeoEye, Earthstar Geographics, CNES/Airbus DS, USDA, AeroGRID, IGN, and the GIS User Community
3. Projection: NAD83 UTM Zone 20

Date: 2025-10-28	Project #: 24-10440
Drawn By: E. Johnson	Drawing #: <b>4D</b>
Checked By: D. Foster	







# **THANK YOU FOR ATTENDING OUR OPEN HOUSE!**



**We welcome your feedback! Please fill out a  
comment sheet on your way out.**

**For more information or to reach out:**



**info@greencurrentenergy.ca**

# Aulds Cove Wind Project Open House Sign-In Sheet

Name	Town	Phone Number	Email	I would like to receive project updates
[Redacted]	Antigonish	[Redacted]	[Redacted]	<input checked="" type="checkbox"/> Yes
[Redacted]	New Glasgow	[Redacted]	[Redacted]	<input type="checkbox"/> Yes
[Redacted]	Antigonish	[Redacted]	[Redacted]	<input checked="" type="checkbox"/> Yes
[Redacted]	Pictou	[Redacted]	[Redacted]	<input type="checkbox"/> Yes
[Redacted]	Harve Boucher	[Redacted]	[Redacted]	<input checked="" type="checkbox"/> Yes
[Redacted]	Harve Boucher	[Redacted]	[Redacted]	<input checked="" type="checkbox"/> Yes
[Redacted]	CRIGNISH	[Redacted]	[Redacted]	<input checked="" type="checkbox"/> Yes
[Redacted]	HARVE Boucher	[Redacted]	[Redacted]	<input checked="" type="checkbox"/> Yes
[Redacted]	Truro	[Redacted]	[Redacted]	<input checked="" type="checkbox"/> Yes
[Redacted]	Truro	[Redacted]	[Redacted]	<input checked="" type="checkbox"/> Yes

**GREENCURRENT**

Renewable Energy Development Inc.

att. 25/11/04 - Moncton



# Aulds Cove Wind Project Open House Sign-In Sheet

Name	Town	Phone Number	Email	I would like to receive project updates
[Redacted]	Antigonish	[Redacted]	[Redacted]	<input checked="" type="checkbox"/> Yes
[Redacted]	Antigonish	[Redacted]	[Redacted]	<input checked="" type="checkbox"/> Yes
[Redacted]	Port Hood	[Redacted]	[Redacted]	<input checked="" type="checkbox"/> Yes
[Redacted]	Port Shoreham	[Redacted]	[Redacted]	<input checked="" type="checkbox"/> Yes
[Redacted]	St. Francis Harbour	[Redacted]	[Redacted]	<input type="checkbox"/> Yes
[Redacted]	Elmdale	[Redacted]	[Redacted]	<input checked="" type="checkbox"/> Yes
[Redacted]	Port Hastings	[Redacted]	[Redacted]	<input checked="" type="checkbox"/> Yes
[Redacted]	Antigonish	[Redacted]	[Redacted]	<input checked="" type="checkbox"/> Yes
[Redacted]	Tracadie	[Redacted]	[Redacted]	<input type="checkbox"/> Yes
[Redacted]	Cuparush	[Redacted]	[Redacted]	<input checked="" type="checkbox"/> Yes

**GREENCURRENT**

Renewable Energy Development Inc.

25/11/24 - Monday 3/5

# Aulds Cove Wind Project Open House Sign-In Sheet

Name	Town	Phone Number	Email	I would like to receive project updates
[Redacted]	St. Andrews	[Redacted]	[Redacted]	<input checked="" type="checkbox"/> Yes
[Redacted]	Antigonish	[Redacted]	[Redacted]	<input checked="" type="checkbox"/> Yes
[Redacted]	Mulgrave	[Redacted]	[Redacted]	<input checked="" type="checkbox"/> Yes
[Redacted]	Mulgrave	[Redacted]	[Redacted]	<input checked="" type="checkbox"/> Yes
[Redacted]	Antigonish	[Redacted]	[Redacted]	<input checked="" type="checkbox"/> Yes
[Redacted]	Port Hurdstone	[Redacted]	[Redacted]	<input checked="" type="checkbox"/> Yes
[Redacted]	Antigonish	[Redacted]	[Redacted]	<input type="checkbox"/> Yes
[Redacted]	Monastery	[Redacted]	[Redacted]	<input type="checkbox"/> Yes
[Redacted]	Monastery	[Redacted]	[Redacted]	<input type="checkbox"/> Yes
[Redacted]	Monastery	[Redacted]	[Redacted]	<input type="checkbox"/> Yes

**GREENCURRENT**

Renewable Energy Development Inc.

gt. 25/11/04 - Monastery

3/5



# Aulds Cove Wind Project Open House Sign-In Sheet

Name	Town	Phone Number	Email	I would like to receive project updates
[Redacted]	Moncton	[Redacted]	[Redacted]	[Redacted]
[Redacted]	Louisville	[Redacted]	[Redacted]	<input type="checkbox"/> Yes
[Redacted]	Antigonish	[Redacted]	[Redacted]	<input checked="" type="checkbox"/> Yes
[Redacted]	Dartmouth	[Redacted]	[Redacted]	<input checked="" type="checkbox"/> Yes
[Redacted]	Port Huron	[Redacted]	[Redacted]	<input checked="" type="checkbox"/> Yes
[Redacted]	Mulgrave	[Redacted]	[Redacted]	<input checked="" type="checkbox"/> Yes
[Redacted]	Antigonish	[Redacted]	[Redacted]	<input type="checkbox"/> Yes
[Redacted]	East Tracadie	[Redacted]	[Redacted]	<input checked="" type="checkbox"/> Yes
[Redacted]	East Tracadie	[Redacted]	[Redacted]	<input checked="" type="checkbox"/> Yes
[Redacted]	Harve Boucher	[Redacted]	[Redacted]	<input type="checkbox"/> Yes

**GREENCURRENT**

Renewable Energy Development Inc.

25/11/24 - Moncton

4/5

# Aulds Cove Wind Project Open House Sign-In Sheet

Name	Town	Phone Number	Email	I would like to receive project updates
[Redacted]	Merland	[Redacted]		<input type="checkbox"/> Yes
[Redacted]	Limwood	[Redacted]		<input type="checkbox"/> Yes
[Redacted]	Harre Baker	[Redacted]	[Redacted]	<input type="checkbox"/> Yes
				<input type="checkbox"/> Yes
				<input type="checkbox"/> Yes
				<input type="checkbox"/> Yes
				<input type="checkbox"/> Yes
				<input type="checkbox"/> Yes
				<input type="checkbox"/> Yes
				<input type="checkbox"/> Yes
				<input type="checkbox"/> Yes



Renewable Energy Development Inc.

25/11/24 - Monaster

5/5





Renewable Energy Development Inc.

**Aulds Cove Wind Project Open House Comment Sheet**

**1) How did you hear about this event?** (i.e. heard from neighbour, municipal or county councillor, advertisement, website, social media, or mailout):

*Saw someone mention it on social media*

**2) How helpful was the information you received? Please indicate by circling a number below:**

(Not at all helpful)

1

2

3

4

5

(Very helpful)

**3) Please provide your comments or feedback on the Project:**

*I am a proponent of any project that helps NS grow its renewable energy capacity. Glad to see the opportunity for the public to provide input.*



Renewable Energy Development Inc.

### Aulds Cove Wind Project Open House Comment Sheet

**1) How did you hear about this event?** (i.e. heard from neighbour, municipal or county councillor, advertisement, website, social media, or mailout):

Thru work.

**2) How helpful was the information you received? Please indicate by circling a number below:**

(Not at all helpful)

1

2

3

4

5

(Very helpful)

**3) Please provide your comments or feedback on the Project:**

Looks like a good project for the community. I wish you luck.





Renewable Energy Development Inc.

**Aulds Cove Wind Project Open House Comment Sheet**

**1) How did you hear about this event?** (i.e. heard from neighbour, municipal or county councillor, advertisement, website, social media, or mailout):

Advertisement / word of mouth.

**2) How helpful was the information you received? Please indicate by circling a number below:**

(Not at all helpful)

1

2

3

4

5

(Very helpful)

**3) Please provide your comments or feedback on the Project:**

HOPEFULL FOR LOCAL EMPLOYMENT IN CLEAN ENERGY  
SECTOR.

REALLY HOPE TO SEE THE PROJECT MOVE FORWARD.



Renewable Energy Development Inc.

**Aulds Cove Wind Project Open House Comment Sheet**

**1) How did you hear about this event?** (i.e. heard from neighbour, municipal or county councillor, advertisement, website, social media, or mailout):

*heard from neighbour*

---

---

---

**2) How helpful was the information you received? Please indicate by circling a number below:**

(Not at all helpful)

1

2

3

4

5

(Very helpful)

**3) Please provide your comments or feedback on the Project:**

*Nice project in a good area*

---

---

---

---

---

---

---

---

---

---

Please return to a project team member





Renewable Energy Development Inc.

**Aulds Cove Wind Project Open House Comment Sheet**

**1) How did you hear about this event?** (i.e. heard from neighbour, municipal or county councillor, advertisement, website, social media, or mailout):

Neighbour

**2) How helpful was the information you received? Please indicate by circling a number below:**

(Not at all helpful)

1

2

3

4

5

(Very helpful)

**3) Please provide your comments or feedback on the Project:**

Please return to a project team member



Renewable Energy Development Inc.

### Aulds Cove Wind Project Open House Comment Sheet

1) How did you hear about this event? (i.e. heard from neighbour, municipal or county councillor, advertisement, website, social media, or mailout):

We got a card in the mail.

2) How helpful was the information you received? Please indicate by circling a number below:

(Not at all helpful)

1

2

3

4

5

(Very helpful)

3) Please provide your comments or feedback on the Project:

There were a lot of people present to answer all my questions.  
I was impressed with the extent of research + study that went into the project + the wide variety of environmental + statistical data that was considered.





Renewable Energy Development Inc.

**Aulds Cove Wind Project Open House Comment Sheet**

**1) How did you hear about this event?** (i.e. heard from neighbour, municipal or county councillor, advertisement, website, social media, or mailout):

*Social Media / Industry Connections.*

**2) How helpful was the information you received? Please indicate by circling a number below:**

(Not at all helpful)

1

2

3

4

5

(Very helpful)

**3) Please provide your comments or feedback on the Project:**

*Excited to have these projects in NS.*

*We need more of them.*



Renewable Energy Development Inc.

### Aulds Cove Wind Project Open House Comment Sheet

**1) How did you hear about this event?** (i.e. heard from neighbour, municipal or county councillor, advertisement, website, social media, or mailout):

local flyer distribution.

**2) How helpful was the information you received? Please indicate by circling a number below:**

(Not at all helpful)

1

2

3

4

5

(Very helpful)

**3) Please provide your comments or feedback on the Project:**

Happy to see renewable energy projects  
forging ahead. Looking forward  
to seeing the turbine blades  
floating on the horizon.





Renewable Energy Development Inc.

**Aulds Cove Wind Project Open House Comment Sheet**

**1) How did you hear about this event?** (i.e. heard from neighbour, municipal or county councillor, advertisement, website, social media, or mailout):

*Port Humberbury Report*

*Best paper in Town*

**2) How helpful was the information you received? Please indicate by circling a number below:**

(Not at all helpful)

1

2

3

4

5

(Very helpful)

**3) Please provide your comments or feedback on the Project:**

*Great project, get on with it*



Renewable Energy Development Inc.

**Aulds Cove Wind Project Open House Comment Sheet**

**1) How did you hear about this event?** (i.e. heard from neighbour, municipal or county councillor, advertisement, website, social media, or mailout):

*Advertisement/Notification on Facebook*

**2) How helpful was the information you received? Please indicate by circling a number below:**

(Not at all helpful)

1

2

3

**4**

5

(Very helpful)

**3) Please provide your comments or feedback on the Project:**

*Investigate the impact of 'First Nation' on the project give what is happening in Richmond, BC and Hunter Mtn. and the influence of UNDAIR(A)*





Renewable Energy Development Inc.

### Aulds Cove Wind Project Open House Comment Sheet

1) How did you hear about this event? (i.e. heard from neighbour, municipal or county councillor, advertisement, website, social media, or mailout):

Mail out

2) How helpful was the information you received? Please indicate by circling a number below:

(Not at all helpful)

1

2

3

4

5

(Very helpful)

3) Please provide your comments or feedback on the Project:

- as a resident of Guysborough county have concerns about "accumulated" impacts of this project in close proximity to Goose Harbour Lake and Euxine fuels - for a total of over 100 turbines in this area  
- am not against renewable energy wind projects for local grid and to help NS reach reduction goals.  
- am opposed to large wind projects not for NS but to produce "green" chemicals to ship to Europe



Renewable Energy Development Inc.

**Aulds Cove Wind Project Open House Comment Sheet**

**1) How did you hear about this event?** (i.e. heard from neighbour, municipal or county councillor, advertisement, website, social media, or mailout):

*Working within the wind industry*

**2) How helpful was the information you received? Please indicate by circling a number below:**

(Not at all helpful)

1

2

3

4

5

(Very helpful)

**3) Please provide your comments or feedback on the Project:**

*Looks great and excited to see it be build.*

# Aulds Cove Wind Project Open House Sign-In Sheet

Name	Town	Phone Number	Email	I would like to receive project updates
[Redacted]	Antigonish	[Redacted]	[Redacted]	<input checked="" type="checkbox"/> Yes
[Redacted]	HEATHERTON	[Redacted]	[Redacted]	<input checked="" type="checkbox"/> Yes
[Redacted]				<input type="checkbox"/> Yes
[Redacted]	Have Boucher	[Redacted]	[Redacted]	<input checked="" type="checkbox"/> Yes
[Redacted]		[Redacted]		<input checked="" type="checkbox"/> Yes
[Redacted]	MONASTERY	[Redacted]		<input type="checkbox"/> Yes
[Redacted]	Have Boucher			<input type="checkbox"/> Yes
[Redacted]	monastery			<input type="checkbox"/> Yes
[Redacted]	monastery	[Redacted]	[Redacted]	<input checked="" type="checkbox"/> Yes
[Redacted]				<input type="checkbox"/> Yes

**GREENCURRENT**

Renewable Energy Development Inc.

we. 25/11/04 - Monistery 1/2



# Aulds Cove Wind Project Open House Sign-In Sheet

Name	Town	Phone Number	Email	I would like to receive project updates
[Redacted]	Linwood	[Redacted]	[Redacted]	<input checked="" type="checkbox"/> Yes
[Redacted]	Harvey Boucher	[Redacted]	[Redacted]	<input type="checkbox"/> Yes
[Redacted]	Matthe Settlement	[Redacted]		<input type="checkbox"/> Yes
[Redacted]	Linwood	[Redacted]		<input type="checkbox"/> Yes
[Redacted]	Linwood	[Redacted]		<input type="checkbox"/> Yes
				<input type="checkbox"/> Yes
				<input type="checkbox"/> Yes
				<input type="checkbox"/> Yes
				<input type="checkbox"/> Yes
				<input type="checkbox"/> Yes
				<input type="checkbox"/> Yes



Renewable Energy Development Inc.

ed e. 25/11/04 - Monstey 2/2



Renewable Energy Development Inc.

**Aulds Cove Wind Project Open House Comment Sheet**

**1) How did you hear about this event?** (i.e. heard from neighbour, municipal or county councillor, advertisement, website, social media, or mailout):

*Mailout.*

**2) How helpful was the information you received? Please indicate by circling a number below:**

(Not at all helpful)

1

2

3

4

5

(Very helpful)

**3) Please provide your comments or feedback on the Project:**

*I am very excited about the project and I am looking forward to shovels in the ground.*

Please return to a project team member

# Aulds Cove Wind Project Open House Sign-In Sheet

Name	Town	Phone Number	Email	I would like to receive project updates
[Redacted]	Durham, ON	[Redacted]	[Redacted]	<input checked="" type="checkbox"/> Yes
[Redacted]	Aulds Cove	[Redacted]	[Redacted]	<input checked="" type="checkbox"/> Yes
[Redacted]	Shant 616	[Redacted]	[Redacted]	<input checked="" type="checkbox"/> Yes
[Redacted]	Aulds Cove	[Redacted]	[Redacted]	<input type="checkbox"/> Yes
[Redacted]	[Redacted]	[Redacted]	[Redacted]	<input type="checkbox"/> Yes
[Redacted]	Judique	[Redacted]	[Redacted]	<input type="checkbox"/> Yes
[Redacted]	Bathurst, NB	[Redacted]	[Redacted]	<input checked="" type="checkbox"/> Yes
[Redacted]	MULGRAVE	[Redacted]	[Redacted]	<input checked="" type="checkbox"/> Yes
[Redacted]	Port Moresby	[Redacted]	[Redacted]	<input type="checkbox"/> Yes
[Redacted]	Ginsvender	[Redacted]	[Redacted]	<input type="checkbox"/> Yes

**GREENCURRENT**

Renewable Energy Development Inc.

At. 25/11/05 - Aulds

✓



# Aulds Cove Wind Project Open House Sign-In Sheet

Name	Town	Phone Number	Email	I would like to receive project updates
[Redacted]	Tray	[Redacted]	[Redacted]	<input type="checkbox"/> Yes
[Redacted]	Port Head	[Redacted]	[Redacted]	<input type="checkbox"/> Yes
[Redacted]	Arviss Cove	[Redacted]	[Redacted]	<input type="checkbox"/> Yes
[Redacted]	Arviss Cove	[Redacted]	[Redacted]	<input type="checkbox"/> Yes
[Redacted]	Ant. County	[Redacted]	[Redacted]	<input type="checkbox"/> Yes
[Redacted]	Ant. County	[Redacted]	[Redacted]	<input type="checkbox"/> Yes
[Redacted]	Craigmore	[Redacted]	[Redacted]	<input checked="" type="checkbox"/> Yes
[Redacted]	Guystragh	[Redacted]	[Redacted]	<input checked="" type="checkbox"/> Yes
[Redacted]	Hillier	[Redacted]	[Redacted]	<input type="checkbox"/> Yes
[Redacted]	Inverness	[Redacted]	[Redacted]	<input checked="" type="checkbox"/> Yes

**GREENCURRENT**

Renewable Energy Development Inc.

25/11/05 - Aulds

2

# Aulds Cove Wind Project Open House Sign-In Sheet

Name	Town	Phone Number	Email	I would like to receive project updates
[Redacted]	Orangevale	[Redacted]	[Redacted]	<input checked="" type="checkbox"/> Yes
[Redacted]				<input type="checkbox"/> Yes
[Redacted]				<input type="checkbox"/> Yes
[Redacted]	Croydon	[Redacted]		<input checked="" type="checkbox"/> Yes
[Redacted]	Pt Hastings	[Redacted]	[Redacted]	<input checked="" type="checkbox"/> Yes
[Redacted]	Aulds Cove Fire	[Redacted]	[Redacted]	<input checked="" type="checkbox"/> Yes
[Redacted]	Hawk Beach	[Redacted]		<input type="checkbox"/> Yes
[Redacted]	Havre Boucher	[Redacted]		<input type="checkbox"/> Yes
[Redacted]	Aulds Cove	[Redacted]	[Redacted]	<input checked="" type="checkbox"/> Yes
[Redacted]	Parkville	[Redacted]	[Redacted]	<input checked="" type="checkbox"/> Yes



Renewable Energy Development Inc.

at 25/11/04 - Aulds 3



Renewable Energy Development Inc.

### Aulds Cove Wind Project Open House Comment Sheet

1) How did you hear about this event? (i.e. heard from neighbour, municipal or county councillor, advertisement, website, social media, or mailout):

Mail out (email)

2) How helpful was the information you received? Please indicate by circling a number below:

(Not at all helpful)

1

2

3

4

5

(Very helpful)

3) Please provide your comments or feedback on the Project:

Very interesting to see how much goes into it all. All my questions were answered by David and Peter and I'm excited to see the grid go greener!





Renewable Energy Development Inc.

### Aulds Cove Wind Project Open House Comment Sheet

**1) How did you hear about this event?** (i.e. heard from neighbour, municipal or county councillor, advertisement, website, social media, or mailout):

*Flyers in the mail*

**2) How helpful was the information you received? Please indicate by circling a number below:**

(Not at all helpful)

1

2

3

4

5

(Very helpful)

**3) Please provide your comments or feedback on the Project:**

*- Great Project. - good green Energy.*

*- all will benefit!*

Please return to a project team member



Renewable Energy Development Inc.

### Aulds Cove Wind Project Open House Comment Sheet

**1) How did you hear about this event?** (i.e. heard from neighbour, municipal or county councillor, advertisement, website, social media, or mailout):

Online

**2) How helpful was the information you received? Please indicate by circling a number below:**

(Not at all helpful)

1

2

3

4

5

(Very helpful)

**3) Please provide your comments or feedback on the Project:**

Great project, good location  
and a nice opportunity to  
grow the economy and continue  
on the momentum in the  
region.



Renewable Energy Development Inc.

### Aulds Cove Wind Project Open House Comment Sheet

1) How did you hear about this event? (i.e. heard from neighbour, municipal or county councillor, advertisement, website, social media, or mailout):

---

---

---

2) How helpful was the information you received? Please indicate by circling a number below:

(Not at all helpful)

1

2

3

4

5

(Very helpful)

3) Please provide your comments or feedback on the Project:

My main concern is noise level.

---

---

---

---

---

---

---

---

---

---

Please return to a project team member



Renewable Energy Development Inc.

**Aulds Cove Wind Project Open House Comment Sheet**

**1) How did you hear about this event?** (i.e. heard from neighbour, municipal or county councillor, advertisement, website, social media, or mailout):

Neighbor / landowner

**2) How helpful was the information you received? Please indicate by circling a number below:**

(Not at all helpful)      1      2      3      4      5      (Very helpful)

**3) Please provide your comments or feedback on the Project:**

Great for the economy, for providing renewable electricity for the future generations.





Renewable Energy Development Inc.

### Aulds Cove Wind Project Open House Comment Sheet

1) How did you hear about this event? (i.e. heard from neighbour, municipal or county councillor, advertisement, website, social media, or mailout):

SOCIAL MEDIA

2) How helpful was the information you received? Please indicate by circling a number below:

(Not at all helpful)

1

2

3

4

5

(Very helpful)

3) Please provide your comments or feedback on the Project:

- GREAT PROJECT FOR THE LOCAL AREA AND NOVA SCOTIA

- GOOD JOBS SHORT AND LONG TERM

- ENVIRONMENTAL CONSIDERATIONS WELL COVERED



Renewable Energy Development Inc.

### Aulds Cove Wind Project Open House Comment Sheet

1) How did you hear about this event? (i.e. heard from neighbour, municipal or county councillor, advertisement, website, social media, or mailout):

Neighbour

2) How helpful was the information you received? Please indicate by circling a number below:

(Not at all helpful)

1

2

3

4

5

(Very helpful)

3) Please provide your comments or feedback on the Project:

Great for the county. Green All the way!!

2

# Aulds Cove Wind Project Open House Sign-In Sheet

Name	Town	Phone Number	Email	I would like to receive project updates
[Redacted]	Aulds Cove	[Redacted]	[Redacted]	<input checked="" type="checkbox"/> Yes
[Redacted]	Aulds Cove	[Redacted]	[Redacted]	<input checked="" type="checkbox"/> Yes
[Redacted]	Moose Beach	[Redacted]	[Redacted]	<input checked="" type="checkbox"/> Yes
[Redacted]	Aulds Cove	[Redacted]	[Redacted]	<input checked="" type="checkbox"/> Yes
[Redacted]	Aulds Cove	[Redacted]	[Redacted]	<input checked="" type="checkbox"/> Yes
[Redacted]	Aulds Cove	[Redacted]	[Redacted]	<input checked="" type="checkbox"/> Yes
[Redacted]	Hare Brook	[Redacted]	[Redacted]	<input checked="" type="checkbox"/> Yes
[Redacted]	" "	[Redacted]	[Redacted]	<input checked="" type="checkbox"/> Yes
[Redacted]	A C	[Redacted]	[Redacted]	<input checked="" type="checkbox"/> Yes
[Redacted]	A C	[Redacted]	[Redacted]	<input checked="" type="checkbox"/> Yes



Renewable Energy Development Inc.

Dec 25/11/05 - Aulds

1/4

# Aulds Cove Wind Project Open House Sign-In Sheet

Name	Town	Phone Number	Email	I would like to receive project updates
[Redacted]	Port Haddam	[Redacted]	[Redacted]	<input type="checkbox"/> Yes
[Redacted]	Port Haddam	[Redacted]	[Redacted]	<input type="checkbox"/> Yes
[Redacted]	Frankville	[Redacted]	[Redacted]	<input checked="" type="checkbox"/> Yes
[Redacted]	Port Haddam	[Redacted]	[Redacted]	<input checked="" type="checkbox"/> Yes
[Redacted]	Aulds Cove	[Redacted]	[Redacted]	<input type="checkbox"/> Yes
[Redacted]	HARD BROOK	[Redacted]	[Redacted]	<input checked="" type="checkbox"/> Yes
[Redacted]	Havre Bocher	[Redacted]	[Redacted]	<input checked="" type="checkbox"/> Yes
[Redacted]	H/B	[Redacted]	[Redacted]	<input checked="" type="checkbox"/> Yes
[Redacted]	CRICKSIT	[Redacted]	[Redacted]	<input type="checkbox"/> Yes
[Redacted]	Aulds Cove	[Redacted]	[Redacted]	<input checked="" type="checkbox"/> Yes



Renewable Energy Development Inc.



# Aulds Cove Wind Project Open House Sign-In Sheet

Name	Town	Phone Number	Email	I would like to receive project updates
[Redacted]	Malden	[Redacted]	[Redacted]	<input type="checkbox"/> Yes
[Redacted]	Aulds Cove	[Redacted]	[Redacted]	<input checked="" type="checkbox"/> Yes
[Redacted]	Aulds Cove	[Redacted]	[Redacted]	<input checked="" type="checkbox"/> Yes
[Redacted]	Malden	[Redacted]	[Redacted]	<input type="checkbox"/> Yes
[Redacted]	Malden	[Redacted]	[Redacted]	<input type="checkbox"/> Yes
[Redacted]	Stearns Beach	[Redacted]	[Redacted]	<input checked="" type="checkbox"/> Yes
[Redacted]	Malden	[Redacted]	[Redacted]	<input type="checkbox"/> Yes
[Redacted]	Malden	[Redacted]	[Redacted]	<input checked="" type="checkbox"/> Yes
[Redacted]				<input type="checkbox"/> Yes



Renewable Energy Development Inc.

# Aulds Cove Wind Project Open House Sign-In Sheet

Name	Town	Phone Number	Email	I would like to receive project updates
[Redacted]	Frankville	[Redacted]	[Redacted]	<input checked="" type="checkbox"/> Yes
[Redacted]	Cape Sable	[Redacted]	[Redacted]	<input checked="" type="checkbox"/> Yes
				<input type="checkbox"/> Yes
				<input type="checkbox"/> Yes
				<input type="checkbox"/> Yes
				<input type="checkbox"/> Yes
				<input type="checkbox"/> Yes
				<input type="checkbox"/> Yes
				<input type="checkbox"/> Yes
				<input type="checkbox"/> Yes



Renewable Energy Development Inc.

### Aulds Cove Wind Project Open House Comment Sheet

1) How did you hear about this event? (i.e. heard from neighbour, municipal or county councillor, advertisement, website, social media, or mailout):

---

---

---

2) How helpful was the information you received? Please indicate by circling a number below:

(Not at all helpful)

1

2

3

4

5

(Very helpful)

3) Please provide your comments or feedback on the Project:

→ Clear Bush / trees From Haute Boucher ROAD (from Frankville to old Mulgrave Rd) FOR ACCESS OF FIRE TRUCKS / RESCUE From Haute Boucher to Project

→ ~~FFO~~

---

---

---

---

Please return to a project team member



Renewable Energy Development Inc.

### Aulds Cove Wind Project Open House Comment Sheet

1) How did you hear about this event? (i.e. heard from neighbour, municipal or county councillor, advertisement, website, social media, or mailout):

From a neighbour

2) How helpful was the information you received? Please indicate by circling a number below:

(Not at all helpful)

1

2

3

4

5

(Very helpful)

3) Please provide your comments or feedback on the Project:

1. I am concerned about the impact of removing trees for the turbines + feeder roads on the water table that feeds the wells of the people + businesses in Aulds Cove.

2. I am also concerned about the potential impact on wildlife that has already been greatly detrimental from previous deforestation. I was happy to see that some of this has been already considered and hope there will be ongoing assessment + mitigation

over →

Please return to a project team member





Renewable Energy Development Inc.

③ My third concern is about the usual impact of the turbines on property values in the Guld's Cove area.

④ South, there are several streams that come down off the hills to the west of Guld's Cove, that feed into Archie Pond where my property is located. Will these streams ~~effect~~ be impacted by the project?

# GREENCURRENT

Renewable Energy Development Inc.

## Aulds Cove Wind Project Open House Comment Sheet

1) How did you hear about this event? (i.e. heard from neighbour, municipal or county councillor, advertisement, website, social media, or mailout):

FOUND OUT AT LAST MINUTE THROUGH FB

2) How helpful was the information you received? Please indicate by circling a number below:

(Not at all helpful)

1

2

3

4

5

(Very helpful)

PETER WAS BUT HE LISTENED, SEE WHAT HAPPENS

3) Please provide your comments or feedback on the Project:

- 1) WHAT ARE THE BENEFITS TO AULDS COVE FRANKVILLE 3 <sup>NONE</sup> <sup>USER</sup>
- 2) THE ROADS ARE IN TERRIBLE SHAPE - <sup>GOVERNOR</sup> FRANKVILLE HB ROAD
- 3) THE PRESENTATION USING STORYBOARD GIVING DIFFERENT INFO. TO DIFFERENT PEOPLE POTENTIAL.
- 4) LAND VALUE IS DECREASING (WHAT ARE YOU PROPOSING)
- 5) GIVE US SOME BENEFITS <sup>EG. SHARES & SCHOLARSHIP</sup> <sup>GRANTS</sup>
- 6) PREPARE PRESENTATION FOR ANTICOMISH COUNTY COUNCIL - 318-8337
- 7) GROUND WATER DEFICIENCY WHEN YOU CLEAR CUT
- 8) THE CONGESTION CAUSES DAMAGE IN THE SHORT TERM
- 9)

Please return to a project team member



Renewable Energy Development Inc.

### Aulds Cove Wind Project Open House Comment Sheet

1) How did you hear about this event? (i.e. heard from neighbour, municipal or county councillor, advertisement, website, social media, or mailout):

Mail

2) How helpful was the information you received? Please indicate by circling a number below:

(Not at all helpful)

1

2

3

4

5

(Very helpful)

3) Please provide your comments or feedback on the Project:

① Archie Pond Not Flushing

② WATER ABSORPTION WE ARE ALL ON WELLS

③ ENVIRONMENTAL impact ON WILD LIFE

④ stop light coming out of molgrave

⑤ GARRY ALREADY EYE SORE

⑥ TOWER AND LIGHT ALREADY AN EYE SORE

" My Biggest concern Archie pond  
AND impact on water "



Renewable Energy Development Inc.

**Aulds Cove Wind Project Open House Comment Sheet**

**1) How did you hear about this event?** (i.e. heard from neighbour, municipal or county councillor, advertisement, website, social media, or mailout):

from my DAD

**2) How helpful was the information you received? Please indicate by circling a number below:**

(Not at all helpful)

1

2

3

4



(Very helpful)

**3) Please provide your comments or feedback on the Project:**

IT'S grAT! for The Planet!





Renewable Energy Development Inc.

040 800 760 77

5

1750019 347 709 1750 78 272





Renewable Energy Development Inc.

### Aulds Cove Wind Project Open House Comment Sheet

1) How did you hear about this event? (i.e. heard from neighbour, municipal or county councillor, advertisement, website, social media, or mailout):

*Mailout*

2) How helpful was the information you received? Please indicate by circling a number below:

(Not at all helpful)

1

2

3

4

5

(Very helpful)

*Same old Same old*

3) Please provide your comments or feedback on the Project:

*Not in the watershed*

*Too close to the Town of Malgrave water supply  
of Grants Lake.*



Renewable Energy Development Inc.

### Aulds Cove Wind Project Open House Comment Sheet

1) How did you hear about this event? (i.e. heard from neighbour, municipal or county councillor, advertisement, website, social media, or mailout):

Mail

2) How helpful was the information you received? Please indicate by circling a number below:

(Not at all helpful)

1

2

3

4

5

(Very helpful)

Rewind Play - Similar to previous Open Houses

3) Please provide your comments or feedback on the Project:

- CONCERNS FOR ACTIVITY IN & NEAR WATERSHED
- DISPLAY MATERIALS MENTION 'PAYING ATTENTION TO NESTING ETC. BASED ON EXISTING PAP PROJECT - THAT DID NOT HAPPEN. HOW MANY WETLANDS WERE FILLED IN?
- ROAD WIDTH IS EXCESSIVE
- WHEN WAS A SECOND LAY DOWN YARD DECIDED & PUT IN/NEAR GREAT LAKE WATERSHED? OPPORTUNIST?
- YOUR NOISE & FLICKER MODELS ARE COMPARSED GENERATED, THEY DON'T TAKE NEARBY PROJECTS INTO CONSIDERATION. THE RESULTS AREN'T

Please return to a project team member

OR COMMUNICATIVE.



Renewable Energy Development Inc.

YCN NOISE & FLICKER MODELS COVER ENTIRE  
BODIES OF WATER - HOW CAN THAT NOT IMPACT  
FISH AND WILDLIFE?

September 22, 2025

**Mr. Joel Butler and Mr. Sunny Saini**

**Bell Aliant**

Email: joel.butler@bellaliant.ca; sunny.saini@bell.ca

Dear Mr. Butler and Mr. Saini,

**Re: Electromagnetic Interference Study  
Green Current Wind Energy Project, Guysborough, Nova Scotia**

---

Strum Consulting, a Nova Scotia-based environmental and engineering consulting firm, has been retained by Green Current Renewable Energy Development Inc. (our client) to support the proposed Green Current Wind Energy Project (the "Project") located in Guysborough County, Nova Scotia.

On behalf of our clients, Strum is conducting an electromagnetic interference (EMI) study on the placement of 22 wind turbines near the communities of Mulgrave, Auld's Cove, Pirate Harbour, Frankville and East Havre Boucher in Guysborough County, Nova Scotia.

More specifically, Strum is soliciting feedback, details, and specifications of existing operations from stakeholders to determine if there would be any potential interference with your existing operations as a result of the proposed wind turbine installations. The turbine specifications are as follows:

- Total of 22 turbines
- Tip height of each turbine is 199.5 m
- Hub height of each turbine is 118 m
- 3-blade rotor; turbine blade sweep diameter is 163 m (blade length is 81.5 m)

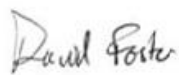
A map showing the proposed locations of the turbines is attached (Drawing 1); and a summary of the proposed turbine details, including coordinates and elevations, is provided in Table 1, below.

**Table 1: Proposed Turbine Locations & Specifications**

Turbine ID	Easting (UTM Z20)	Northing (UTM Z20)	Latitude	Longitude	Base of Turbine Elevation (m)	Turbine Hub Height (m)	Blade Length (m)	Total Elevation (m)
T1	620200.4	5054100.6	45.630044	-61.457913	134.39	118	81.5	333.9
T2	616075.4	5051975.6	45.611625	-61.511322	137.95	118	81.5	337.5
T3	621675.4	5053500.6	45.624389	-61.439147	103.53	118	81.5	303.0
T4	619875.4	5054575.6	45.634374	-61.461964	125.4	118	81.5	324.9
T5	618025.4	5053125.6	45.621644	-61.486043	140.67	118	81.5	340.2
T6	619146.0	5053996.3	45.629287	-61.471461	118.36	118	81.5	317.9
T7	619075.4	5052400.6	45.614942	-61.472756	137.95	118	81.5	337.5
T8	619668.5	5053127.9	45.621384	-61.464974	124.92	118	81.5	324.4
T9	616400.4	5051425.6	45.606622	-61.507286	140.95	118	81.5	340.5
T10	617775.4	5051350.6	45.605716	-61.489677	147.58	118	81.5	347.1
T11	617800.4	5052475.6	45.615834	-61.489085	142.01	118	81.5	341.5
T12	618912.6	5053159.2	45.621795	-61.474658	137.32	118	81.5	336.8
T13	618419.4	5053741.9	45.627123	-61.480841	144.74	118	81.5	344.2
T14	616600.4	5052600.6	45.617161	-61.504441	129.73	118	81.5	329.2
T15	618475.4	5052325.6	45.61437	-61.480467	147.34	118	81.5	346.8
T16	621475.4	5052875.6	45.6188	-61.441867	122.72	118	81.5	322.2
T17	620750.4	5053300.6	45.622751	-61.451058	120.55	118	81.5	320.1
T18	619225.4	5051750.6	45.609068	-61.470992	146.2	118	81.5	345.7
T19	618225.4	5051650.6	45.608339	-61.483836	143.48	118	81.5	343.0
T20	616700.4	5052000.6	45.611746	-61.503303	135.98	118	81.5	335.5
T21	620150.4	5053375.6	45.623529	-61.458733	129.22	118	81.5	328.7
T22	617475.4	5053200.6	45.622412	-61.493077	149.51	118	81.5	349.0

Thank you for your time and consideration of this Project. Upon review, should you have any questions, or concerns, or identify a need for additional information, please do not hesitate to contact a member of our team and we will follow up with you directly. Your feedback and support in this matter is most appreciated.

Thank you,

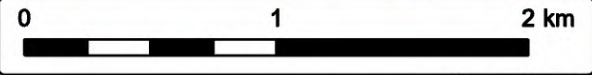
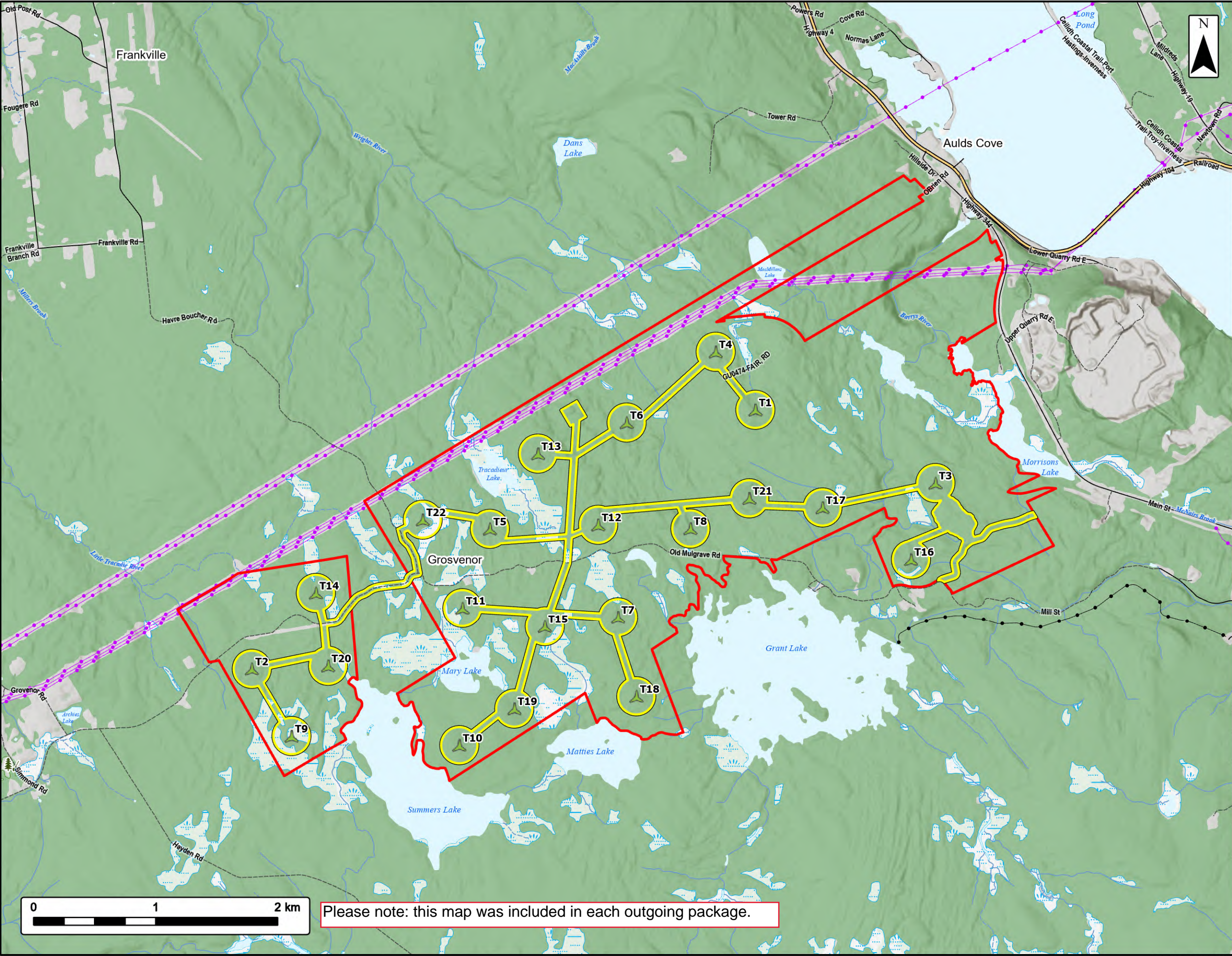


David Foster, PhD  
Terrestrial Specialist, Project Coordinator  
Environmental Assessment & Approvals  
[dfoster@strum.com](mailto:dfoster@strum.com)



Matthew Savelle, BSc.  
Group Manager, Geomatics  
Environmental Assessment & Approvals  
[msavelle@strum.com](mailto:msavelle@strum.com)





Please note: this map was included in each outgoing package.

### Green Current Wind Farm

EMI Consultation Zones

Study Area

Assessment Area

Proposed Turbine Locations

**Transportation**

Trans-Canada Highway

Road

Unpaved Road

**Utilities (Line)**

Existing Pipeline

Existing Transmission Lines

**Water Features**

Mapped Stream

Mapped Indefinite Stream

Mapped Lakes and Rivers

Mapped Wetlands

Coordinate System: NAD 1983 UTM Zone 20N

Sources: Esri, NASA, NGA, USGS, Service Nova Scotia, GeoNOVA, SNSIS, NSNRR, ACCDC, IBA Canada, CNWI, HERE, Garmin, USGS

Date:	2025-09-18	Project #:	24-10440
Scale:	1:30,000	Drawing #:	1
Drawn By:	M. Partridge		
Checked By:	D. Foster		





---

**RE: Green Current Wind Energy Project**

---

**From** Popescu, Virgil <virgil.popescu@bell.ca>

**Date** Wed 2025-12-10 11:48 AM

**To** Polly Nguyen <pnguyen@strum.com>

**Cc** David Foster <dfoster@strum.com>; General Mailbox <general@strum.com>; Saini, Sunny <sunny.saini@bell.ca>; Butler, Joel <Joel.Butler@bellaliant.ca>; Donkor, Enyonam <enyonam.donkor@bell.ca>

Some people who received this message don't often get email from virgil.popescu@bell.ca. [Learn why this is important](#)

Hello Polly.

Thanks for the information provided.

The proposed Green Current wind farm development (Aulds Cove, NS) is not a concern for the terrestrial microwave links operated by Bell.

Best regards,

---

**Virgil Popescu | Senior Advisor**

**Wireless Network Connectivity Engineering**

**200 1 Carrefour A-G Bell B3, Verdun, QC H3E 3B3**

[virgil.popescu@bell.ca](mailto:virgil.popescu@bell.ca) // 1-514-420-5293

---

**From:** Saini, Sunny <sunny.saini@bell.ca>

**Sent:** September-23-25 10:06 AM

**To:** Popescu, Virgil <virgil.popescu@bell.ca>; Donkor, Enyonam <enyonam.donkor@bell.ca>

**Cc:** David Foster <dfoster@strum.com>; General Mailbox <general@strum.com>; Polly Nguyen <pnguyen@strum.com>; Butler, Joel <Joel.Butler@bellaliant.ca>; Donkor, Enyonam <enyonam.donkor@bell.ca>

**Subject:** RE: Green Current Wind Energy Project

+ Virgil and Enyo

Hello Team,

Please support.

Thanks,

Sunny Saini

RAN Solutions | Bell Mobility Inc.

---

**From:** Polly Nguyen <pnguyen@strum.com>

**Sent:** September-23-25 8:00 AM

**To:** Butler, Joel <Joel.Butler@bellaliant.ca>; Saini, Sunny <sunny.saini@bell.ca>

**Cc:** David Foster <dfoster@strum.com>; General Mailbox <general@strum.com>


**Subject:** [EXT]Green Current Wind Energy Project

Good day,

On behalf of our client, Strum is conducting an electromagnetic interference ("EMI") study on the placement of 22 wind turbines located near the communities of Mulgrave, Auld's Cove, Pirate Harbour, Frankville and East Havre Boucher in Guysborough County, Nova Scotia. Please find attached a notification letter for the proposed development.

A confirmation receipt would be greatly appreciated. For questions or comments, kindly contact the undersigned.

Looking forward to hearing from you.

 Company Logo**Polly Nguyen, MREM**

Environmental Scientist

Environmental Assessment & Approvals  
(she/her)

T: 902.835.5660

Suite 210 - 211 Horseshoe Lake Dr.

Halifax, NS, B3S 0B9

 [Website](#)  [Instagram](#)  [LinkedIn](#)

CONFIDENTIALITY NOTICE: This e-mail, and any files sent with it, are confidential and for the use of the intended recipient only. If you have received this e-mail in error, please telephone 902.835.5560 or e-mail the sender, and delete the original. Thank you.

---

**External Email:** Please use caution when opening links and attachments / **Courriel externe:** Soyez prudent avec les liens et documents joints

**CAUTION: This email originated from outside your organization. Do not click links or open attachments unless you recognize the sender and know the content is safe.**

September 22, 2025

**Mr. Martin Grégoire**  
**Vessel Traffic Systems Radars**  
**Canadian Coast Guard**  
Email: windfarm.coordinator@dfo-mpo.gc.ca

Dear Mr. Grégoire,

**Re: Electromagnetic Interference Study**  
**Green Current Wind Energy Project, Guysborough, Nova Scotia**

---

Strum Consulting, a Nova Scotia-based environmental and engineering consulting firm, has been retained by Green Current Renewable Energy Development Inc. (our client) to support the proposed Green Current Wind Energy Project (the "Project") located in Guysborough County, Nova Scotia.

On behalf of our clients, Strum is conducting an electromagnetic interference (EMI) study on the placement of 22 wind turbines near the communities of Mulgrave, Auld's Cove, Pirate Harbour, Frankville and East Havre Boucher in Guysborough County, Nova Scotia.

More specifically, Strum is soliciting feedback, details, and specifications of existing operations from stakeholders to determine if there would be any potential interference with your existing operations as a result of the proposed wind turbine installations. The turbine specifications are as follows:

- Total of 22 turbines
- Tip height of each turbine is 199.5 m
- Hub height of each turbine is 118 m
- 3-blade rotor; turbine blade sweep diameter is 163 m (blade length is 81.5 m)

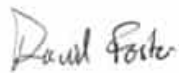
A map showing the proposed locations of the turbines is attached (Drawing 1); and a summary of the proposed turbine details, including coordinates and elevations, is provided in Table 1, below.

Table 1: Proposed Turbine Locations & Specifications

Turbine ID	Easting (UTM Z20)	Northing (UTM Z20)	Latitude	Longitude	Base of Turbine Elevation (m)	Turbine Hub Height (m)	Blade Length (m)	Total Elevation (m)
T1	620200.4	5054100.6	45.630044	-61.457913	134.39	118	81.5	333.9
T2	616075.4	5051975.6	45.611625	-61.511322	137.95	118	81.5	337.5
T3	621675.4	5053500.6	45.624389	-61.439147	103.53	118	81.5	303.0
T4	619875.4	5054575.6	45.634374	-61.461964	125.4	118	81.5	324.9
T5	618025.4	5053125.6	45.621644	-61.486043	140.67	118	81.5	340.2
T6	619146.0	5053996.3	45.629287	-61.471461	118.36	118	81.5	317.9
T7	619075.4	5052400.6	45.614942	-61.472756	137.95	118	81.5	337.5
T8	619668.5	5053127.9	45.621384	-61.464974	124.92	118	81.5	324.4
T9	616400.4	5051425.6	45.606622	-61.507286	140.95	118	81.5	340.5
T10	617775.4	5051350.6	45.605716	-61.489677	147.58	118	81.5	347.1
T11	617800.4	5052475.6	45.615834	-61.489085	142.01	118	81.5	341.5
T12	618912.6	5053159.2	45.621795	-61.474658	137.32	118	81.5	336.8
T13	618419.4	5053741.9	45.627123	-61.480841	144.74	118	81.5	344.2
T14	616600.4	5052600.6	45.617161	-61.504441	129.73	118	81.5	329.2
T15	618475.4	5052325.6	45.61437	-61.480467	147.34	118	81.5	346.8
T16	621475.4	5052875.6	45.6188	-61.441867	122.72	118	81.5	322.2
T17	620750.4	5053300.6	45.622751	-61.451058	120.55	118	81.5	320.1
T18	619225.4	5051750.6	45.609068	-61.470992	146.2	118	81.5	345.7
T19	618225.4	5051650.6	45.608339	-61.483836	143.48	118	81.5	343.0
T20	616700.4	5052000.6	45.611746	-61.503303	135.98	118	81.5	335.5
T21	620150.4	5053375.6	45.623529	-61.458733	129.22	118	81.5	328.7
T22	617475.4	5053200.6	45.622412	-61.493077	149.51	118	81.5	349.0

Thank you for your time and consideration of this Project. Upon review, should you have any questions, or concerns, or identify a need for additional information, please do not hesitate to contact a member of our team and we will follow up with you directly. Your feedback and support in this matter is most appreciated.

Thank you,

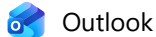


David Foster, PhD  
Terrestrial Specialist, Project Coordinator  
Environmental Assessment & Approvals  
[dfoster@strum.com](mailto:dfoster@strum.com)



Matthew Savelle, BSc.  
Group Manager, Geomatics  
Environmental Assessment & Approvals  
[msavelle@strum.com](mailto:msavelle@strum.com)





---

**RE: Green Current Wind Energy Project**

---

**From** Grégoire, Martin (DFO/MPO) <Martin.Gregoire@dfo-mpo.gc.ca>  
**Date** Fri 2025-09-26 5:13 PM  
**To** Polly Nguyen <pnguyen@strum.com>  
**Cc** David Foster <dfoster@strum.com>; General Mailbox <general@strum.com>

Unclassified - Non-Classifié

Hello,

The proposed wind farm (Green Current) is located about 3 km away from the Canso Canal radar site and the Canso Lock VHF site.

- Even though it is located within the 60 km consultation zone for a radar, it is located beyond the area covered by the radar.
- It is located beyond the 1 km consultation zone for a VHF site.

For these 2 reasons, no interference issues are anticipated for this proposed wind farm.

Regards / Salutations,

**Martin Grégoire**

Canadian Coast Guard  
Garde côtière canadienne

---

**From:** Polly Nguyen <pnguyen@strum.com>  
**Sent:** Tuesday, 23 September, 2025 8:00 AM  
**To:** CCG Wind Farm Coordinator / Coordinateur Parc Éolien GCC (DFO/MPO) <DFO.CCGWindFarmCoordinator-CoordinateurParcEolienGCC.MPO@dfo-mpo.gc.ca>  
**Cc:** David Foster <dfoster@strum.com>; General Mailbox <general@strum.com>  
**Subject:** Green Current Wind Energy Project

Good day,

On behalf of our client, Strum is conducting an electromagnetic interference ("EMI") study on the placement of 22 wind turbines located near the communities of Mulgrave, Auld's Cove, Pirate Harbour, Frankville and East Havre Boucher in Guysborough County, Nova Scotia. Please find attached a notification letter for the proposed development.

A confirmation receipt would be greatly appreciated. For questions or comments, kindly contact the undersigned.

Looking forward to hearing from you.

**Polly Nguyen, MREM**  
Environmental Scientist  
Environmental Assessment & Approvals  
(she/her)  
  
T: 902.835.5660  
Suite 210 - 211 Horseshoe Lake Dr.  
Halifax, NS, B3S 0B9

CONFIDENTIALITY NOTICE: This e-mail, and any files sent with it, are confidential and for the use of the intended recipient only. If you have received this e-mail in error, please telephone 902.835.5560 or e-mail the sender, and delete the original. Thank you.

September 22, 2025

**Military Air Defence and Air Traffic Control Radars  
Department of National Defence (DND)**

Wind Turbines D Aero Rdns 1 Canadian Air Division  
P.O. Box # 17000 Station Forces  
Winnipeg MB R3J 3Y5  
Email: +WindTurbines@forces.gc.ca

To whom it may concern,

**Re: Electromagnetic Interference Study  
Green Current Wind Energy Project, Guysborough, Nova Scotia**

---

Strum Consulting, a Nova Scotia-based environmental and engineering consulting firm, has been retained by Green Current Renewable Energy Development Inc. (our client) to support the proposed Green Current Wind Energy Project (the "Project") located in Guysborough County, Nova Scotia.

On behalf of our clients, Strum is conducting an electromagnetic interference (EMI) study on the placement of 22 wind turbines near the communities of Mulgrave, Auld's Cove, Pirate Harbour, Frankville and East Havre Boucher in Guysborough County, Nova Scotia.

More specifically, Strum is soliciting feedback, details, and specifications of existing operations from stakeholders to determine if there would be any potential interference with your existing operations as a result of the proposed wind turbine installations. The turbine specifications are as follows:

- Total of 22 turbines
- Tip height of each turbine is 199.5 m
- Hub height of each turbine is 118 m
- 3-blade rotor; turbine blade sweep diameter is 163 m (blade length is 81.5 m)

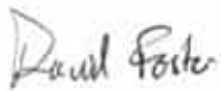
A map showing the proposed locations of the turbines is attached (Drawing 1); and a summary of the proposed turbine details, including coordinates and elevations, is provided in Table 1, below.

Table 1: Proposed Turbine Locations & Specifications

Turbine ID	Easting (UTM Z20)	Northing (UTM Z20)	Latitude	Longitude	Base of Turbine Elevation (m)	Turbine Hub Height (m)	Blade Length (m)	Total Elevation (m)
T1	620200.4	5054100.6	45.630044	-61.457913	134.39	118	81.5	333.9
T2	616075.4	5051975.6	45.611625	-61.511322	137.95	118	81.5	337.5
T3	621675.4	5053500.6	45.624389	-61.439147	103.53	118	81.5	303.0
T4	619875.4	5054575.6	45.634374	-61.461964	125.4	118	81.5	324.9
T5	618025.4	5053125.6	45.621644	-61.486043	140.67	118	81.5	340.2
T6	619146.0	5053996.3	45.629287	-61.471461	118.36	118	81.5	317.9
T7	619075.4	5052400.6	45.614942	-61.472756	137.95	118	81.5	337.5
T8	619668.5	5053127.9	45.621384	-61.464974	124.92	118	81.5	324.4
T9	616400.4	5051425.6	45.606622	-61.507286	140.95	118	81.5	340.5
T10	617775.4	5051350.6	45.605716	-61.489677	147.58	118	81.5	347.1
T11	617800.4	5052475.6	45.615834	-61.489085	142.01	118	81.5	341.5
T12	618912.6	5053159.2	45.621795	-61.474658	137.32	118	81.5	336.8
T13	618419.4	5053741.9	45.627123	-61.480841	144.74	118	81.5	344.2
T14	616600.4	5052600.6	45.617161	-61.504441	129.73	118	81.5	329.2
T15	618475.4	5052325.6	45.61437	-61.480467	147.34	118	81.5	346.8
T16	621475.4	5052875.6	45.6188	-61.441867	122.72	118	81.5	322.2
T17	620750.4	5053300.6	45.622751	-61.451058	120.55	118	81.5	320.1
T18	619225.4	5051750.6	45.609068	-61.470992	146.2	118	81.5	345.7
T19	618225.4	5051650.6	45.608339	-61.483836	143.48	118	81.5	343.0
T20	616700.4	5052000.6	45.611746	-61.503303	135.98	118	81.5	335.5
T21	620150.4	5053375.6	45.623529	-61.458733	129.22	118	81.5	328.7
T22	617475.4	5053200.6	45.622412	-61.493077	149.51	118	81.5	349.0

Thank you for your time and consideration of this Project. Upon review, should you have any questions, or concerns, or identify a need for additional information, please do not hesitate to contact a member of our team and we will follow up with you directly. Your feedback and support in this matter is most appreciated.

Thank you,



David Foster, PhD  
Terrestrial Specialist, Project Coordinator  
Environmental Assessment & Approvals  
[dfoster@strum.com](mailto:dfoster@strum.com)



Matthew Savelle, BSc.  
Group Manager, Geomatics  
Environmental Assessment & Approvals  
[msavelle@strum.com](mailto:msavelle@strum.com)



1 Canadian Air Division HQ  
PO BOX 17000 STN Forces  
Winnipeg, MB R3J 3Y5

Date of Electronic Signature

Polly Nguyen  
Strum Consulting  
Suite 210-211 Horseshoe Lake Drive,  
Halifax, Nova Scotia B3S 1B4

#### LETTER OF NON-OBJECTION FOR STRUM CONSULTING

Dear Ms. Nguyen

Thank you for your patience on this matter and for considering DND radar, airport facilities, and radio-communication systems in your project development process. We have completed the detailed analysis of your proposed site, referenced in NAVCAN Land Use file# 25-4517 the wind energy project near Auld's Cove, NS. The results of the detailed analysis and subsequent technical and operational impact assessments have confirmed there is likely to be minimal or no interference with DND radar, flight operations, and radio-communication systems. Therefore, as a result of these findings we have no objections with your project as submitted. If however, the layout were to change/move, please re-submit that proposal for another assessment.

The concurrence for this site is valid for 24 months from date of this correspondence. If the project should be cancelled or delayed during this timeframe please advise the point of contact. It should be noted that each submission is assessed on a case by case basis and as such, concurrence on this submission in no way constitutes a concurrence for similar projects in the same area, nor does it indicate that similar concurrence might be offered in another region. The issuance of this Letter of Non-Objection shall not constitute a waiver or alienation of any existing or future legal rights of the DND/CAF nor shall it be construed to create any exemptions, indemnification, approvals, rights, acceptances in favour of Strum Consulting.

DND/CAF expressly reserves its rights to take legal action or seek remedy for any and all liability, loss, harm, degradation of services or equipment, litigation costs, damages, judgements or expenses that arise from the adverse effects, whether incidental, indirect or causal, of the referenced NAVCAN Land Use file# 25-4517 the wind energy project near Auld's Cove, NS. upon the DND/CAF radars, equipment and its provision of Air Traffic Services.

At present DND is working with Transport Canada to make obstruction lighting compliance with Night Vision Goggles (NVG) mandatory. At present DND cannot stipulate that proponents of wind turbine farms utilize NVG compliant lighting. However, as you can imagine, the safety of our aircrews is a top priority, and as such, we ask that you consider lighting your turbines with NVG compliant lighting so that they are visible to pilots during NVG operations.

I trust that you will find this satisfactory. If you have any technical questions or concerns regarding any aspect of this investigation, please contact the undersigned.

Kind regards.

BATEMAN,  
JEFFREY 299

Digitally signed by  
BATEMAN, JEFFREY 299  
Date: 2025.10.17 09:17:27  
-05'00'

*J.D. Bateman*  
Master Warrant Officer  
Staff Officer Aerospace Systems



September 22, 2025

**Weathers Radars**

**Environment Canada**

Email: weatherradars@ec.gc.ca; radarsmeteo-weatherradars@ec.gc.ca

To whom it may concern,

**Re: Electromagnetic Interference Study  
Green Current Wind Energy Project, Guysborough, Nova Scotia**

---

Strum Consulting, a Nova Scotia-based environmental and engineering consulting firm, has been retained by Green Current Renewable Energy Development Inc. (our client) to support the proposed Green Current Wind Energy Project (the "Project") located in Guysborough County, Nova Scotia.

On behalf of our clients, Strum is conducting an electromagnetic interference (EMI) study on the placement of 22 wind turbines near the communities of Mulgrave, Auld's Cove, Pirate Harbour, Frankville and East Havre Boucher in Guysborough County, Nova Scotia.

More specifically, Strum is soliciting feedback, details, and specifications of existing operations from stakeholders to determine if there would be any potential interference with your existing operations as a result of the proposed wind turbine installations. The turbine specifications are as follows:

- Total of 22 turbines
- Tip height of each turbine is 199.5 m
- Hub height of each turbine is 118 m
- 3-blade rotor; turbine blade sweep diameter is 163 m (blade length is 81.5 m)

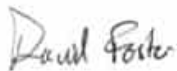
A map showing the proposed locations of the turbines is attached (Drawing 1); and a summary of the proposed turbine details, including coordinates and elevations, is provided in Table 1, below.

**Table 1: Proposed Turbine Locations & Specifications**

Turbine ID	Easting (UTM Z20)	Northing (UTM Z20)	Latitude	Longitude	Base of Turbine Elevation (m)	Turbine Hub Height (m)	Blade Length (m)	Total Elevation (m)
T1	620200.4	5054100.6	45.630044	-61.457913	134.39	118	81.5	333.9
T2	616075.4	5051975.6	45.611625	-61.511322	137.95	118	81.5	337.5
T3	621675.4	5053500.6	45.624389	-61.439147	103.53	118	81.5	303.0
T4	619875.4	5054575.6	45.634374	-61.461964	125.4	118	81.5	324.9
T5	618025.4	5053125.6	45.621644	-61.486043	140.67	118	81.5	340.2
T6	619146.0	5053996.3	45.629287	-61.471461	118.36	118	81.5	317.9
T7	619075.4	5052400.6	45.614942	-61.472756	137.95	118	81.5	337.5
T8	619668.5	5053127.9	45.621384	-61.464974	124.92	118	81.5	324.4
T9	616400.4	5051425.6	45.606622	-61.507286	140.95	118	81.5	340.5
T10	617775.4	5051350.6	45.605716	-61.489677	147.58	118	81.5	347.1
T11	617800.4	5052475.6	45.615834	-61.489085	142.01	118	81.5	341.5
T12	618912.6	5053159.2	45.621795	-61.474658	137.32	118	81.5	336.8
T13	618419.4	5053741.9	45.627123	-61.480841	144.74	118	81.5	344.2
T14	616600.4	5052600.6	45.617161	-61.504441	129.73	118	81.5	329.2
T15	618475.4	5052325.6	45.61437	-61.480467	147.34	118	81.5	346.8
T16	621475.4	5052875.6	45.6188	-61.441867	122.72	118	81.5	322.2
T17	620750.4	5053300.6	45.622751	-61.451058	120.55	118	81.5	320.1
T18	619225.4	5051750.6	45.609068	-61.470992	146.2	118	81.5	345.7
T19	618225.4	5051650.6	45.608339	-61.483836	143.48	118	81.5	343.0
T20	616700.4	5052000.6	45.611746	-61.503303	135.98	118	81.5	335.5
T21	620150.4	5053375.6	45.623529	-61.458733	129.22	118	81.5	328.7
T22	617475.4	5053200.6	45.622412	-61.493077	149.51	118	81.5	349.0

Thank you for your time and consideration of this Project. Upon review, should you have any questions, or concerns, or identify a need for additional information, please do not hesitate to contact a member of our team and we will follow up with you directly. Your feedback and support in this matter is most appreciated.

Thank you,



David Foster, PhD  
Terrestrial Specialist, Project Coordinator  
Environmental Assessment & Approvals  
[dfoster@strum.com](mailto:dfoster@strum.com)



Matthew Savelle, BSc.  
Group Manager, Geomatics  
Environmental Assessment & Approvals  
[msavelle@strum.com](mailto:msavelle@strum.com)



October 14, 2025

**Polly Nguyen**  
**Strum Consulting**

**Subject:** Green Current Wind Project – New Preliminary Analysis of Impacts on ECCC Radars

Dear Polly,

Thank you for contacting the Meteorological Service of Canada, a branch of Environment and Climate Change Canada (ECCC), regarding your wind energy project proposal.

When assessing the potential impact of all new wind farm projects, ECCC's main goal is to avoid significant interference with weather radars that would hinder the timely and accurate production of watches and warnings of significant weather.

We have reviewed the information that you provided to us via e-mail on September 23, 2025, for the proposed Green Current Wind Farm Project (located approximately 102-108 km away from ECCC's Marion Bridge, NS Weather Radar). Our preliminary assessment of the proposed project indicates that any potential interference that may be created should not significantly affect our radar operations. Consequently, we do not have objections to the current proposal.

If your plans are modified in any manner (e.g. number of turbines, turbine height or placement), this analysis will no longer be valid and an updated analysis must be conducted; please contact us at: [radarsmeteo-weatheradars@ec.gc.ca](mailto:radarsmeteo-weatheradars@ec.gc.ca). In addition, please notify us once your project is completed (i.e. all turbines operational) or if you decide not to proceed with this project, so that we may formally close this file.

Thank you for your ongoing cooperation and we wish you success with your wind energy project.

Sincerely,

Digitally signed by  
Kaya, Shannon  
Date: 2025.10.14  
16:21:19 -04'00'

**Shannon Kaya**

Directrice, Division de la transformation de l'innovation et du génie  
Service Météorologique du Canada, Environnement et Changement Climatique Canada  
Director, Transformation, Innovation and Engineering Division  
Meteorological Service of Canada, Environment and Climate Change Canada

September 22, 2025

**Ms. Sarah Ivany**

**Innovation, Science and Economic Development Canada (ISED)**

Email: ic.spectrumnsd-spectredne.ic@canada.ca; sarah.ivany@ised-isde.gc.ca

Dear Ms. Ivany,

**Re: Electromagnetic Interference Study  
Green Current Wind Energy Project, Guysborough, Nova Scotia**

---

Strum Consulting, a Nova Scotia-based environmental and engineering consulting firm, has been retained by Green Current Renewable Energy Development Inc. (our client) to support the proposed Green Current Wind Energy Project (the "Project") located in Guysborough County, Nova Scotia.

On behalf of our clients, Strum is conducting an electromagnetic interference (EMI) study on the placement of 22 wind turbines near the communities of Mulgrave, Auld's Cove, Pirate Harbour, Frankville and East Havre Boucher in Guysborough County, Nova Scotia.

More specifically, Strum is soliciting feedback, details, and specifications of existing operations from stakeholders to determine if there would be any potential interference with your existing operations as a result of the proposed wind turbine installations. The turbine specifications are as follows:

- Total of 22 turbines
- Tip height of each turbine is 199.5 m
- Hub height of each turbine is 118 m
- 3-blade rotor; turbine blade sweep diameter is 163 m (blade length is 81.5 m)

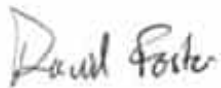
A map showing the proposed locations of the turbines is attached (Drawing 1); and a summary of the proposed turbine details, including coordinates and elevations, is provided in Table 1, below.

**Table 1: Proposed Turbine Locations & Specifications**

Turbine ID	Easting (UTM Z20)	Northing (UTM Z20)	Latitude	Longitude	Base of Turbine Elevation (m)	Turbine Hub Height (m)	Blade Length (m)	Total Elevation (m)
T1	620200.4	5054100.6	45.630044	-61.457913	134.39	118	81.5	333.9
T2	616075.4	5051975.6	45.611625	-61.511322	137.95	118	81.5	337.5
T3	621675.4	5053500.6	45.624389	-61.439147	103.53	118	81.5	303.0
T4	619875.4	5054575.6	45.634374	-61.461964	125.4	118	81.5	324.9
T5	618025.4	5053125.6	45.621644	-61.486043	140.67	118	81.5	340.2
T6	619146.0	5053996.3	45.629287	-61.471461	118.36	118	81.5	317.9
T7	619075.4	5052400.6	45.614942	-61.472756	137.95	118	81.5	337.5
T8	619668.5	5053127.9	45.621384	-61.464974	124.92	118	81.5	324.4
T9	616400.4	5051425.6	45.606622	-61.507286	140.95	118	81.5	340.5
T10	617775.4	5051350.6	45.605716	-61.489677	147.58	118	81.5	347.1
T11	617800.4	5052475.6	45.615834	-61.489085	142.01	118	81.5	341.5
T12	618912.6	5053159.2	45.621795	-61.474658	137.32	118	81.5	336.8
T13	618419.4	5053741.9	45.627123	-61.480841	144.74	118	81.5	344.2
T14	616600.4	5052600.6	45.617161	-61.504441	129.73	118	81.5	329.2
T15	618475.4	5052325.6	45.61437	-61.480467	147.34	118	81.5	346.8
T16	621475.4	5052875.6	45.6188	-61.441867	122.72	118	81.5	322.2
T17	620750.4	5053300.6	45.622751	-61.451058	120.55	118	81.5	320.1
T18	619225.4	5051750.6	45.609068	-61.470992	146.2	118	81.5	345.7
T19	618225.4	5051650.6	45.608339	-61.483836	143.48	118	81.5	343.0
T20	616700.4	5052000.6	45.611746	-61.503303	135.98	118	81.5	335.5
T21	620150.4	5053375.6	45.623529	-61.458733	129.22	118	81.5	328.7
T22	617475.4	5053200.6	45.622412	-61.493077	149.51	118	81.5	349.0

Thank you for your time and consideration of this Project. Upon review, should you have any questions, or concerns, or identify a need for additional information, please do not hesitate to contact a member of our team and we will follow up with you directly. Your feedback and support in this matter is most appreciated.

Thank you,

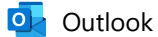


David Foster, PhD  
Terrestrial Specialist, Project Coordinator  
Environmental Assessment & Approvals  
dfoster@strum.com



Matthew Savelle, BSc.  
Group Manager, Geomatics  
Environmental Assessment & Approvals  
msavelle@strum.com





---

**Green Current Wind Energy Project**


---

**From** Stevens, Brendan (he, him, his | il, le, lui) (ISED/ISDE) <Brendan.Stevens@ised-isde.gc.ca>

**Date** Mon 2025-10-06 3:02 PM

**To** Polly Nguyen <pnguyen@strum.com>

**Cc** David Foster <dfoster@strum.com>; General Mailbox <general@strum.com>

 1 attachment (952 KB)

250922 EMI Study Notification Green Current Wind Energy Project - Innovation, Science, and Economic Development Canada.pdf;

Good Afternoon,

I've completed a search for stations not found in our public database. I have not identified any non-disclosed systems that would require additional consultation for your project according to the RABC document linked below.

[Technical Information and Coordination Process Between Wind Turbines and Radiocommunication and Radar Systems - RABC-CCCR](#)

Please be sure to conduct a search of ISED's public database at [Search for SMS data](#) to conduct a search for users that may require coordination.

If you have any further questions please let me know.

Regards,

Brendan Stevens  
(he, him, his | il, le, lui)

Spectrum Management Officer | Agent de la Gestion du Spectre  
Spectrum Management Operations Branch | Direction générale des opérations de la gestion du spectre  
Innovation, Science and Economic Development Canada / Government of Canada | Innovation, Sciences et Développement économique Canada / Gouvernement du Canada  
50 Brown Avenue, Dartmouth NS B3B 1X8 | 50, avenue Brown, Dartmouth NS B3B 1X8  
[brendan.stevens@ised-isde.gc.ca](mailto:brendan.stevens@ised-isde.gc.ca)  
Telephone | Téléphone +1 (902) 489-0339  
Government of Canada | Gouvernement du Canada

**CAUTION: This email originated from outside your organization. Do not click links or open attachments unless you recognize the sender and know the content is safe.**

September 22, 2025

**Mr. Phil Tanguay**  
**Royal Canadian Mounted Police (RCMP)**  
Email: Windfarm\_Coordinator@rcmp-grc.gc.ca

Dear Mr. Tanguay,

**Re: Electromagnetic Interference Study**  
**Green Current Wind Energy Project, Guysborough, Nova Scotia**

---

Strum Consulting, a Nova Scotia-based environmental and engineering consulting firm, has been retained by Green Current Renewable Energy Development Inc. (our client) to support the proposed Green Current Wind Energy Project (the "Project") located in Guysborough County, Nova Scotia.

On behalf of our clients, Strum is conducting an electromagnetic interference (EMI) study on the placement of 22 wind turbines near the communities of Mulgrave, Auld's Cove, Pirate Harbour, Frankville and East Havre Boucher in Guysborough County, Nova Scotia.

More specifically, Strum is soliciting feedback, details, and specifications of existing operations from stakeholders to determine if there would be any potential interference with your existing operations as a result of the proposed wind turbine installations. The turbine specifications are as follows:

- Total of 22 turbines
- Tip height of each turbine is 199.5 m
- Hub height of each turbine is 118 m
- 3-blade rotor; turbine blade sweep diameter is 163 m (blade length is 81.5 m)

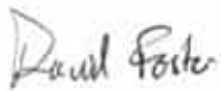
A map showing the proposed locations of the turbines is attached (Drawing 1); and a summary of the proposed turbine details, including coordinates and elevations, is provided in Table 1, below.

Table 1: Proposed Turbine Locations & Specifications

Turbine ID	Easting (UTM Z20)	Northing (UTM Z20)	Latitude	Longitude	Base of Turbine Elevation (m)	Turbine Hub Height (m)	Blade Length (m)	Total Elevation (m)
T1	620200.4	5054100.6	45.630044	-61.457913	134.39	118	81.5	333.9
T2	616075.4	5051975.6	45.611625	-61.511322	137.95	118	81.5	337.5
T3	621675.4	5053500.6	45.624389	-61.439147	103.53	118	81.5	303.0
T4	619875.4	5054575.6	45.634374	-61.461964	125.4	118	81.5	324.9
T5	618025.4	5053125.6	45.621644	-61.486043	140.67	118	81.5	340.2
T6	619146.0	5053996.3	45.629287	-61.471461	118.36	118	81.5	317.9
T7	619075.4	5052400.6	45.614942	-61.472756	137.95	118	81.5	337.5
T8	619668.5	5053127.9	45.621384	-61.464974	124.92	118	81.5	324.4
T9	616400.4	5051425.6	45.606622	-61.507286	140.95	118	81.5	340.5
T10	617775.4	5051350.6	45.605716	-61.489677	147.58	118	81.5	347.1
T11	617800.4	5052475.6	45.615834	-61.489085	142.01	118	81.5	341.5
T12	618912.6	5053159.2	45.621795	-61.474658	137.32	118	81.5	336.8
T13	618419.4	5053741.9	45.627123	-61.480841	144.74	118	81.5	344.2
T14	616600.4	5052600.6	45.617161	-61.504441	129.73	118	81.5	329.2
T15	618475.4	5052325.6	45.61437	-61.480467	147.34	118	81.5	346.8
T16	621475.4	5052875.6	45.6188	-61.441867	122.72	118	81.5	322.2
T17	620750.4	5053300.6	45.622751	-61.451058	120.55	118	81.5	320.1
T18	619225.4	5051750.6	45.609068	-61.470992	146.2	118	81.5	345.7
T19	618225.4	5051650.6	45.608339	-61.483836	143.48	118	81.5	343.0
T20	616700.4	5052000.6	45.611746	-61.503303	135.98	118	81.5	335.5
T21	620150.4	5053375.6	45.623529	-61.458733	129.22	118	81.5	328.7
T22	617475.4	5053200.6	45.622412	-61.493077	149.51	118	81.5	349.0

Thank you for your time and consideration of this Project. Upon review, should you have any questions, or concerns, or identify a need for additional information, please do not hesitate to contact a member of our team and we will follow up with you directly. Your feedback and support in this matter is most appreciated.

Thank you,



David Foster, PhD  
Terrestrial Specialist, Project Coordinator  
Environmental Assessment & Approvals  
[dfoster@strum.com](mailto:dfoster@strum.com)



Matthew Savelle, BSc.  
Group Manager, Geomatics  
Environmental Assessment & Approvals  
[msavelle@strum.com](mailto:msavelle@strum.com)



Protected A

Polly Nguyen  
Strum

GV 1620-7-3

24 September 2025

**SUBJECT: Green Current Wind Energy Project**

**Ref. # 2025-09-23\_0212**

Greetings,

Reference is made to your email request dated September 23, 2025, on your plans for the wind energy project called "Green Current" in the province of Nova Scotia.

According to the Radio Advisory Board of Canada (RABC) and Canadian Wind Energy Association (CanWea), the radius of the consultation zone for fixed Land Mobile Radio (LMR) sites is 1 km. The RCMP currently have no "owned" radio towers or Point-To-Point (PTP) microwave links in this area.

However, the **surrounding area is receiving radio coverage from TMR2** operated as a leased system through Bell Canada. It is required that you request coordination with Bell who are acting on behalf of RCMP in the province of Nova Scotia with leased towers.

Should you require additional information, please direct any questions or concerns to the undersigned.

Sincerely,

**Phil Tanguay**

Wind Farm Coordinator,  
National Radio Services / Digital Program  
Royal Canadian Mounted Police (RCMP) / Government of Canada

[windfarm\\_coordinator@rcmp-grc.gc.ca](mailto:windfarm_coordinator@rcmp-grc.gc.ca) / Tel: 343-552-1290

Coordonnateur parc éolien,  
Services de radio nationaux / Programme Numérique  
Gendarmerie royale du Canada (GRC) / Gouvernement du Canada

September 22, 2025

**NavCanada**

Email: [landuse@navcanada.ca](mailto:landuse@navcanada.ca)

To whom it may concern,

**Re: Electromagnetic Interference Study  
Green Current Wind Energy Project, Guysborough, Nova Scotia**

---

Strum Consulting, a Nova Scotia-based environmental and engineering consulting firm, has been retained by Green Current Renewable Energy Development Inc. (our client) to support the proposed Green Current Wind Energy Project (the "Project") located in Guysborough County, Nova Scotia.

On behalf of our clients, Strum is conducting an electromagnetic interference (EMI) study on the placement of 22 wind turbines near the communities of Mulgrave, Auld's Cove, Pirate Harbour, Frankville and East Havre Boucher in Guysborough County, Nova Scotia.

More specifically, Strum is soliciting feedback, details, and specifications of existing operations from stakeholders to determine if there would be any potential interference with your existing operations as a result of the proposed wind turbine installations. The turbine specifications are as follows:

- Total of 22 turbines
- Tip height of each turbine is 199.5 m
- Hub height of each turbine is 118 m
- 3-blade rotor; turbine blade sweep diameter is 163 m (blade length is 81.5 m)

A map showing the proposed locations of the turbines is attached (Drawing 1); and a summary of the proposed turbine details, including coordinates and elevations, is provided in Table 1, below.



**Table 1: Proposed Turbine Locations & Specifications**

Turbine ID	Easting (UTM Z20)	Northing (UTM Z20)	Latitude	Longitude	Base of Turbine Elevation (m)	Turbine Hub Height (m)	Blade Length (m)	Total Elevation (m)
T1	620200.4	5054100.6	45.630044	-61.457913	134.39	118	81.5	333.9
T2	616075.4	5051975.6	45.611625	-61.511322	137.95	118	81.5	337.5
T3	621675.4	5053500.6	45.624389	-61.439147	103.53	118	81.5	303.0
T4	619875.4	5054575.6	45.634374	-61.461964	125.4	118	81.5	324.9
T5	618025.4	5053125.6	45.621644	-61.486043	140.67	118	81.5	340.2
T6	619146.0	5053996.3	45.629287	-61.471461	118.36	118	81.5	317.9
T7	619075.4	5052400.6	45.614942	-61.472756	137.95	118	81.5	337.5
T8	619668.5	5053127.9	45.621384	-61.464974	124.92	118	81.5	324.4
T9	616400.4	5051425.6	45.606622	-61.507286	140.95	118	81.5	340.5
T10	617775.4	5051350.6	45.605716	-61.489677	147.58	118	81.5	347.1
T11	617800.4	5052475.6	45.615834	-61.489085	142.01	118	81.5	341.5
T12	618912.6	5053159.2	45.621795	-61.474658	137.32	118	81.5	336.8
T13	618419.4	5053741.9	45.627123	-61.480841	144.74	118	81.5	344.2
T14	616600.4	5052600.6	45.617161	-61.504441	129.73	118	81.5	329.2
T15	618475.4	5052325.6	45.61437	-61.480467	147.34	118	81.5	346.8
T16	621475.4	5052875.6	45.6188	-61.441867	122.72	118	81.5	322.2
T17	620750.4	5053300.6	45.622751	-61.451058	120.55	118	81.5	320.1
T18	619225.4	5051750.6	45.609068	-61.470992	146.2	118	81.5	345.7
T19	618225.4	5051650.6	45.608339	-61.483836	143.48	118	81.5	343.0
T20	616700.4	5052000.6	45.611746	-61.503303	135.98	118	81.5	335.5
T21	620150.4	5053375.6	45.623529	-61.458733	129.22	118	81.5	328.7
T22	617475.4	5053200.6	45.622412	-61.493077	149.51	118	81.5	349.0

Thank you for your time and consideration of this Project. Upon review, should you have any questions, or concerns, or identify a need for additional information, please do not hesitate to contact a member of our team and we will follow up with you directly. Your feedback and support in this matter is most appreciated.

Thank you,



David Foster, PhD  
Terrestrial Specialist, Project Coordinator  
Environmental Assessment & Approvals  
[dfoster@strum.com](mailto:dfoster@strum.com)



Matthew Savelle, BSc.  
Group Manager, Geomatics  
Environmental Assessment & Approvals  
[msavelle@strum.com](mailto:msavelle@strum.com)

September 22, 2025

**Chief Dan MacEachern**  
**Auld's Cove Volunteer Fire Department**

NS-104, Aulds Cove

NS B0H 1P0

Email: auldscofire3053@gmail.com

Dear Chief MacEachern,

**Re: Electromagnetic Interference Study**  
**Green Current Wind Energy Project, Guysborough, Nova Scotia**

---

Strum Consulting, a Nova Scotia-based environmental and engineering consulting firm, has been retained by Green Current Renewable Energy Development Inc. (our client) to support the proposed Green Current Wind Energy Project (the "Project") located in Guysborough County, Nova Scotia.

On behalf of our clients, Strum is conducting an electromagnetic interference (EMI) study on the placement of 22 wind turbines near the communities of Mulgrave, Auld's Cove, Pirate Harbour, Frankville and East Havre Boucher in Guysborough County, Nova Scotia.

More specifically, Strum is soliciting feedback, details, and specifications of existing operations from stakeholders to determine if there would be any potential interference with your existing operations as a result of the proposed wind turbine installations. The turbine specifications are as follows:

- Total of 22 turbines
- Tip height of each turbine is 199.5 metres
- Hub height of each turbine is 118 metres
- 3-blade rotor; turbine blade sweep diameter is 163 metres (blade length is 81.5 metres)

A map showing the proposed locations of the turbines is attached (Drawing 1); and a summary of the proposed turbine details, including coordinates and elevations, is provided in Table 1, below.

**Table 1: Proposed Turbine Locations & Specifications**

Turbine ID	Easting (UTM Z20)	Northing (UTM Z20)	Latitude	Longitude	Base of Turbine Elevation (m)	Turbine Hub Height (m)	Blade Length (m)	Total Elevation (m)
T1	620200.4	5054100.6	45.630044	-61.457913	134.39	118	81.5	333.9
T2	616075.4	5051975.6	45.611625	-61.511322	137.95	118	81.5	337.5
T3	621675.4	5053500.6	45.624389	-61.439147	103.53	118	81.5	303.0
T4	619875.4	5054575.6	45.634374	-61.461964	125.4	118	81.5	324.9
T5	618025.4	5053125.6	45.621644	-61.486043	140.67	118	81.5	340.2
T6	619146.0	5053996.3	45.629287	-61.471461	118.36	118	81.5	317.9
T7	619075.4	5052400.6	45.614942	-61.472756	137.95	118	81.5	337.5
T8	619668.5	5053127.9	45.621384	-61.464974	124.92	118	81.5	324.4
T9	616400.4	5051425.6	45.606622	-61.507286	140.95	118	81.5	340.5
T10	617775.4	5051350.6	45.605716	-61.489677	147.58	118	81.5	347.1
T11	617800.4	5052475.6	45.615834	-61.489085	142.01	118	81.5	341.5
T12	618912.6	5053159.2	45.621795	-61.474658	137.32	118	81.5	336.8
T13	618419.4	5053741.9	45.627123	-61.480841	144.74	118	81.5	344.2
T14	616600.4	5052600.6	45.617161	-61.504441	129.73	118	81.5	329.2
T15	618475.4	5052325.6	45.61437	-61.480467	147.34	118	81.5	346.8
T16	621475.4	5052875.6	45.6188	-61.441867	122.72	118	81.5	322.2
T17	620750.4	5053300.6	45.622751	-61.451058	120.55	118	81.5	320.1
T18	619225.4	5051750.6	45.609068	-61.470992	146.2	118	81.5	345.7
T19	618225.4	5051650.6	45.608339	-61.483836	143.48	118	81.5	343.0
T20	616700.4	5052000.6	45.611746	-61.503303	135.98	118	81.5	335.5
T21	620150.4	5053375.6	45.623529	-61.458733	129.22	118	81.5	328.7
T22	617475.4	5053200.6	45.622412	-61.493077	149.51	118	81.5	349.0

Thank you for your time and consideration of this Project. Upon review, should you have any questions, or concerns, or identify a need for additional information, please do not hesitate to contact a member of our team and we will follow up with you directly. Your feedback and support in this matter is most appreciated.

Thank you,



David Foster, PhD  
 Terrestrial Specialist, Project Coordinator  
 Environmental Assessment & Approvals  
[dfoster@strum.com](mailto:dfoster@strum.com)



Matthew Savelle, BSc.  
 Group Manager, Geomatics  
 Environmental Assessment & Approvals  
[msavelle@strum.com](mailto:msavelle@strum.com)

September 22, 2025

**Mr. Jeff Gilham and Mr. Andrew MacVicar**

**Eastlink Inc.**

Email: [ceo@corp.eastlink.ca](mailto:ceo@corp.eastlink.ca); [andrew.macvicar@corp.eastlink.ca](mailto:andrew.macvicar@corp.eastlink.ca)

Dear Mr. Gilham and Mr. MacVicar,

**Re: Electromagnetic Interference Study  
Green Current Wind Energy Project  
Guysborough, Nova Scotia**

---

Strum Consulting, a Nova Scotia-based environmental and engineering consulting firm, has been retained by Green Current Renewable Energy Development Inc. (our client) to support the proposed Green Current Wind Energy Project (the "Project") located in Guysborough County, Nova Scotia.

On behalf of our clients, Strum is conducting an electromagnetic interference (EMI) study on the placement of 22 wind turbines near the communities of Mulgrave, Auld's Cove, Pirate Harbour, Frankville and East Havre Boucher in Guysborough County, Nova Scotia.

More specifically, Strum is soliciting feedback, details, and specifications of existing operations from stakeholders to determine if there would be any potential interference with your existing operations as a result of the proposed wind turbine installations. The turbine specifications are as follows:

- Total of 22 turbines
- Tip height of each turbine is 199.5 m
- Hub height of each turbine is 118 m
- 3-blade rotor; turbine blade sweep diameter is 163 m (blade length is 81.5 m)


A map showing the proposed locations of the turbines is attached (Drawing 1); and a summary of the proposed turbine details, including coordinates and elevations, is provided in Table 1, below.

**Table 1: Proposed Turbine Locations & Specifications**

Turbine ID	Easting (UTM Z20)	Northing (UTM Z20)	Latitude	Longitude	Base of Turbine Elevation (m)	Turbine Hub Height (m)	Blade Length (m)	Total Elevation (m)
T1	620200.4	5054100.6	45.630044	-61.457913	134.39	118	81.5	333.9
T2	616075.4	5051975.6	45.611625	-61.511322	137.95	118	81.5	337.5
T3	621675.4	5053500.6	45.624389	-61.439147	103.53	118	81.5	303.0
T4	619875.4	5054575.6	45.634374	-61.461964	125.4	118	81.5	324.9
T5	618025.4	5053125.6	45.621644	-61.486043	140.67	118	81.5	340.2
T6	619146.0	5053996.3	45.629287	-61.471461	118.36	118	81.5	317.9
T7	619075.4	5052400.6	45.614942	-61.472756	137.95	118	81.5	337.5
T8	619668.5	5053127.9	45.621384	-61.464974	124.92	118	81.5	324.4
T9	616400.4	5051425.6	45.606622	-61.507286	140.95	118	81.5	340.5
T10	617775.4	5051350.6	45.605716	-61.489677	147.58	118	81.5	347.1
T11	617800.4	5052475.6	45.615834	-61.489085	142.01	118	81.5	341.5
T12	618912.6	5053159.2	45.621795	-61.474658	137.32	118	81.5	336.8
T13	618419.4	5053741.9	45.627123	-61.480841	144.74	118	81.5	344.2
T14	616600.4	5052600.6	45.617161	-61.504441	129.73	118	81.5	329.2
T15	618475.4	5052325.6	45.61437	-61.480467	147.34	118	81.5	346.8
T16	621475.4	5052875.6	45.6188	-61.441867	122.72	118	81.5	322.2
T17	620750.4	5053300.6	45.622751	-61.451058	120.55	118	81.5	320.1
T18	619225.4	5051750.6	45.609068	-61.470992	146.2	118	81.5	345.7
T19	618225.4	5051650.6	45.608339	-61.483836	143.48	118	81.5	343.0
T20	616700.4	5052000.6	45.611746	-61.503303	135.98	118	81.5	335.5
T21	620150.4	5053375.6	45.623529	-61.458733	129.22	118	81.5	328.7
T22	617475.4	5053200.6	45.622412	-61.493077	149.51	118	81.5	349.0

Thank you for your time and consideration of this Project. Upon review, should you have any questions, or concerns, or identify a need for additional information, please do not hesitate to contact a member of our team and we will follow up with you directly. Your feedback and support in this matter is most appreciated.

Thank you,



David Foster, PhD  
Terrestrial Specialist, Project Coordinator  
Environmental Assessment & Approvals  
[dfoster@strum.com](mailto:dfoster@strum.com)



Matthew Savelle, BSc.  
Group Manager, Geomatics  
Environmental Assessment & Approvals  
[msavelle@strum.com](mailto:msavelle@strum.com)



September 22, 2025

**Mr. Lorne MacDonald**  
**Mulgrave Fire Department**  
385 Murray Street  
Mulgrave, NS B0E 2G0

Dear Mr. MacDonald,

**Re: Electromagnetic Interference Study**  
**Green Current Wind Energy Project, Guysborough, Nova Scotia**

---

Strum Consulting, a Nova Scotia-based environmental and engineering consulting firm, has been retained by Green Current Renewable Energy Development Inc. (our client) to support the proposed Green Current Wind Energy Project (the "Project") located in Guysborough County, Nova Scotia.

On behalf of our clients, Strum is conducting an electromagnetic interference (EMI) study on the placement of 22 wind turbines near the communities of Mulgrave, Auld's Cove, Pirate Harbour, Frankville and East Havre Boucher in Guysborough County, Nova Scotia.

More specifically, Strum is soliciting feedback, details, and specifications of existing operations from stakeholders to determine if there would be any potential interference with your existing operations as a result of the proposed wind turbine installations. The turbine specifications are as follows:

- Total of 22 turbines
- Tip height of each turbine is 199.5 m
- Hub height of each turbine is 118 m
- 3-blade rotor; turbine blade sweep diameter is 163 m (blade length is 81.5 m)

A map showing the proposed locations of the turbines is attached (Drawing 1); and a summary of the proposed turbine details, including coordinates and elevations, is provided in Table 1, below.

**Table 1: Proposed Turbine Locations & Specifications**

Turbine ID	Easting (UTM Z20)	Northing (UTM Z20)	Latitude	Longitude	Base of Turbine Elevation (m)	Turbine Hub Height (m)	Blade Length (m)	Total Elevation (m)
T1	620200.4	5054100.6	45.630044	-61.457913	134.39	118	81.5	333.9
T2	616075.4	5051975.6	45.611625	-61.511322	137.95	118	81.5	337.5
T3	621675.4	5053500.6	45.624389	-61.439147	103.53	118	81.5	303.0
T4	619875.4	5054575.6	45.634374	-61.461964	125.4	118	81.5	324.9
T5	618025.4	5053125.6	45.621644	-61.486043	140.67	118	81.5	340.2
T6	619146.0	5053996.3	45.629287	-61.471461	118.36	118	81.5	317.9
T7	619075.4	5052400.6	45.614942	-61.472756	137.95	118	81.5	337.5
T8	619668.5	5053127.9	45.621384	-61.464974	124.92	118	81.5	324.4
T9	616400.4	5051425.6	45.606622	-61.507286	140.95	118	81.5	340.5
T10	617775.4	5051350.6	45.605716	-61.489677	147.58	118	81.5	347.1
T11	617800.4	5052475.6	45.615834	-61.489085	142.01	118	81.5	341.5
T12	618912.6	5053159.2	45.621795	-61.474658	137.32	118	81.5	336.8
T13	618419.4	5053741.9	45.627123	-61.480841	144.74	118	81.5	344.2
T14	616600.4	5052600.6	45.617161	-61.504441	129.73	118	81.5	329.2
T15	618475.4	5052325.6	45.61437	-61.480467	147.34	118	81.5	346.8
T16	621475.4	5052875.6	45.6188	-61.441867	122.72	118	81.5	322.2
T17	620750.4	5053300.6	45.622751	-61.451058	120.55	118	81.5	320.1
T18	619225.4	5051750.6	45.609068	-61.470992	146.2	118	81.5	345.7
T19	618225.4	5051650.6	45.608339	-61.483836	143.48	118	81.5	343.0
T20	616700.4	5052000.6	45.611746	-61.503303	135.98	118	81.5	335.5
T21	620150.4	5053375.6	45.623529	-61.458733	129.22	118	81.5	328.7
T22	617475.4	5053200.6	45.622412	-61.493077	149.51	118	81.5	349.0

Thank you for your time and consideration of this Project. Upon review, should you have any questions, or concerns, or identify a need for additional information, please do not hesitate to contact a member of our team and we will follow up with you directly. Your feedback and support in this matter is most appreciated.

Thank you,



David Foster, PhD  
Terrestrial Specialist, Project Coordinator  
Environmental Assessment & Approvals  
[dfoster@strum.com](mailto:dfoster@strum.com)



Matthew Savelle, BSc.  
Group Manager, Geomatics  
Environmental Assessment & Approvals  
[msavelle@strum.com](mailto:msavelle@strum.com)

September 22, 2025

**Mr. Shawn Andrews**  
**Fire Service Association of Guysborough**  
Email: sandrews@modg.ca

Dear Mr. Andrews,

**Re: Electromagnetic Interference Study**  
**Green Current Wind Energy Project, Guysborough, Nova Scotia**

---

Strum Consulting, a Nova Scotia-based environmental and engineering consulting firm, has been retained by Green Current Renewable Energy Development Inc. (our client) to support the proposed Green Current Wind Energy Project (the "Project") located in Guysborough County, Nova Scotia.

On behalf of our clients, Strum is conducting an electromagnetic interference (EMI) study on the placement of 22 wind turbines near the communities of Mulgrave, Auld's Cove, Pirate Harbour, Frankville and East Havre Boucher in Guysborough County, Nova Scotia.

More specifically, Strum is soliciting feedback, details, and specifications of existing operations from stakeholders to determine if there would be any potential interference with your existing operations as a result of the proposed wind turbine installations. The turbine specifications are as follows:

- Total of 22 turbines
- Tip height of each turbine is 199.5 m
- Hub height of each turbine is 118 m
- 3-blade rotor; turbine blade sweep diameter is 163 m (blade length is 81.5 m)


A map showing the proposed locations of the turbines is attached (Drawing 1); and a summary of the proposed turbine details, including coordinates and elevations, is provided in Table 1, below.

**Table 1: Proposed Turbine Locations & Specifications**

Turbine ID	Easting (UTM Z20)	Northing (UTM Z20)	Latitude	Longitude	Base of Turbine Elevation (m)	Turbine Hub Height (m)	Blade Length (m)	Total Elevation (m)
T1	620200.4	5054100.6	45.630044	-61.457913	134.39	118	81.5	333.9
T2	616075.4	5051975.6	45.611625	-61.511322	137.95	118	81.5	337.5
T3	621675.4	5053500.6	45.624389	-61.439147	103.53	118	81.5	303.0
T4	619875.4	5054575.6	45.634374	-61.461964	125.4	118	81.5	324.9
T5	618025.4	5053125.6	45.621644	-61.486043	140.67	118	81.5	340.2
T6	619146.0	5053996.3	45.629287	-61.471461	118.36	118	81.5	317.9
T7	619075.4	5052400.6	45.614942	-61.472756	137.95	118	81.5	337.5
T8	619668.5	5053127.9	45.621384	-61.464974	124.92	118	81.5	324.4
T9	616400.4	5051425.6	45.606622	-61.507286	140.95	118	81.5	340.5
T10	617775.4	5051350.6	45.605716	-61.489677	147.58	118	81.5	347.1
T11	617800.4	5052475.6	45.615834	-61.489085	142.01	118	81.5	341.5
T12	618912.6	5053159.2	45.621795	-61.474658	137.32	118	81.5	336.8
T13	618419.4	5053741.9	45.627123	-61.480841	144.74	118	81.5	344.2
T14	616600.4	5052600.6	45.617161	-61.504441	129.73	118	81.5	329.2
T15	618475.4	5052325.6	45.61437	-61.480467	147.34	118	81.5	346.8
T16	621475.4	5052875.6	45.6188	-61.441867	122.72	118	81.5	322.2
T17	620750.4	5053300.6	45.622751	-61.451058	120.55	118	81.5	320.1
T18	619225.4	5051750.6	45.609068	-61.470992	146.2	118	81.5	345.7
T19	618225.4	5051650.6	45.608339	-61.483836	143.48	118	81.5	343.0
T20	616700.4	5052000.6	45.611746	-61.503303	135.98	118	81.5	335.5
T21	620150.4	5053375.6	45.623529	-61.458733	129.22	118	81.5	328.7
T22	617475.4	5053200.6	45.622412	-61.493077	149.51	118	81.5	349.0

Thank you for your time and consideration of this Project. Upon review, should you have any questions, or concerns, or identify a need for additional information, please do not hesitate to contact a member of our team and we will follow up with you directly. Your feedback and support in this matter is most appreciated.

Thank you,



David Foster, PhD  
Terrestrial Specialist, Project Coordinator  
Environmental Assessment & Approvals  
[dfoster@strum.com](mailto:dfoster@strum.com)



Matthew Savelle, BSc.  
Group Manager, Geomatics  
Environmental Assessment & Approvals  
[msavelle@strum.com](mailto:msavelle@strum.com)

November 24, 2025

**Port Hastings Volunteer Fire Department**

1 Old Victoria Rd #15

Port Hastings, NS B9A 1L2

To whom it may concern,

**Re: Electromagnetic Interference Study**

**Green Current Wind Energy Project, Guysborough, Nova Scotia**

---

Strum Consulting, a Nova Scotia-based environmental and engineering consulting firm, has been retained by Green Current Renewable Energy Development Inc. (our client) to support the proposed Green Current Wind Energy Project (the "Project") located in Guysborough County, Nova Scotia.

On behalf of our clients, Strum is conducting an electromagnetic interference (EMI) study on the placement of 22 wind turbines near the communities of Mulgrave, Auld's Cove, Pirate Harbour, Frankville and East Havre Boucher in Guysborough County, Nova Scotia.

More specifically, Strum is soliciting feedback, details, and specifications of existing operations from stakeholders to determine if there would be any potential interference with your existing operations as a result of the proposed wind turbine installations. The turbine specifications are as follows:

- Total of 22 turbines
- Tip height of each turbine is 199.5 m
- Hub height of each turbine is 118 m
- 3-blade rotor; turbine blade sweep diameter is 163 m (blade length is 81.5 m)

A map showing the proposed locations of the turbines is attached (Drawing 1); and a summary of the proposed turbine details, including coordinates and elevations, is provided in Table 1, below.



**Table 1: Proposed Turbine Locations & Specifications**

Turbine ID	Easting (UTM Z20)	Northing (UTM Z20)	Latitude	Longitude	Base of Turbine Elevation (m)	Turbine Hub Height (m)	Blade Length (m)	Total Elevation (m)
T1	620200.4	5054100.6	45.630044	-61.457913	134.39	118	81.5	333.9
T2	616075.4	5051975.6	45.611625	-61.511322	137.95	118	81.5	337.5
T3	621675.4	5053500.6	45.624389	-61.439147	103.53	118	81.5	303.0
T4	619875.4	5054575.6	45.634374	-61.461964	125.4	118	81.5	324.9
T5	618025.4	5053125.6	45.621644	-61.486043	140.67	118	81.5	340.2
T6	619146.0	5053996.3	45.629287	-61.471461	118.36	118	81.5	317.9
T7	619075.4	5052400.6	45.614942	-61.472756	137.95	118	81.5	337.5
T8	619668.5	5053127.9	45.621384	-61.464974	124.92	118	81.5	324.4
T9	616400.4	5051425.6	45.606622	-61.507286	140.95	118	81.5	340.5
T10	617775.4	5051350.6	45.605716	-61.489677	147.58	118	81.5	347.1
T11	617800.4	5052475.6	45.615834	-61.489085	142.01	118	81.5	341.5
T12	618912.6	5053159.2	45.621795	-61.474658	137.32	118	81.5	336.8
T13	618419.4	5053741.9	45.627123	-61.480841	144.74	118	81.5	344.2
T14	616600.4	5052600.6	45.617161	-61.504441	129.73	118	81.5	329.2
T15	618475.4	5052325.6	45.61437	-61.480467	147.34	118	81.5	346.8
T16	621475.4	5052875.6	45.6188	-61.441867	122.72	118	81.5	322.2
T17	620750.4	5053300.6	45.622751	-61.451058	120.55	118	81.5	320.1
T18	619225.4	5051750.6	45.609068	-61.470992	146.2	118	81.5	345.7
T19	618225.4	5051650.6	45.608339	-61.483836	143.48	118	81.5	343.0
T20	616700.4	5052000.6	45.611746	-61.503303	135.98	118	81.5	335.5
T21	620150.4	5053375.6	45.623529	-61.458733	129.22	118	81.5	328.7
T22	617475.4	5053200.6	45.622412	-61.493077	149.51	118	81.5	349.0

Thank you for your time and consideration of this Project. Upon review, should you have any questions, or concerns, or identify a need for additional information, please do not hesitate to contact a member of our team and we will follow up with you directly. Your feedback and support in this matter is most appreciated.

Thank you,



David Foster, PhD  
Terrestrial Specialist, Project Coordinator  
Environmental Assessment & Approvals  
[dfoster@strum.com](mailto:dfoster@strum.com)



Matthew Savelle, BSc.  
Group Manager, Geomatics  
Environmental Assessment & Approvals  
[msavelle@strum.com](mailto:msavelle@strum.com)

November 24, 2025

**Port Hawkesbury Volunteer Fire Department**

Email: phvfd@eastlink.ca

To whom it may concern,

**Re: Electromagnetic Interference Study  
Green Current Wind Energy Project, Guysborough, Nova Scotia**

---

Strum Consulting, a Nova Scotia-based environmental and engineering consulting firm, has been retained by Green Current Renewable Energy Development Inc. (our client) to support the proposed Green Current Wind Energy Project (the "Project") located in Guysborough County, Nova Scotia.

On behalf of our clients, Strum is conducting an electromagnetic interference (EMI) study on the placement of 22 wind turbines near the communities of Mulgrave, Auld's Cove, Pirate Harbour, Frankville and East Havre Boucher in Guysborough County, Nova Scotia.

More specifically, Strum is soliciting feedback, details, and specifications of existing operations from stakeholders to determine if there would be any potential interference with your existing operations as a result of the proposed wind turbine installations. The turbine specifications are as follows:

- Total of 22 turbines
- Tip height of each turbine is 199.5 m
- Hub height of each turbine is 118 m
- 3-blade rotor; turbine blade sweep diameter is 163 m (blade length is 81.5 m)

A map showing the proposed locations of the turbines is attached (Drawing 1); and a summary of the proposed turbine details, including coordinates and elevations, is provided in Table 1, below.

**Table 1: Proposed Turbine Locations & Specifications**

Turbine ID	Easting (UTM Z20)	Northing (UTM Z20)	Latitude	Longitude	Base of Turbine Elevation (m)	Turbine Hub Height (m)	Blade Length (m)	Total Elevation (m)
T1	620200.4	5054100.6	45.630044	-61.457913	134.39	118	81.5	333.9
T2	616075.4	5051975.6	45.611625	-61.511322	137.95	118	81.5	337.5
T3	621675.4	5053500.6	45.624389	-61.439147	103.53	118	81.5	303.0
T4	619875.4	5054575.6	45.634374	-61.461964	125.4	118	81.5	324.9
T5	618025.4	5053125.6	45.621644	-61.486043	140.67	118	81.5	340.2
T6	619146.0	5053996.3	45.629287	-61.471461	118.36	118	81.5	317.9
T7	619075.4	5052400.6	45.614942	-61.472756	137.95	118	81.5	337.5
T8	619668.5	5053127.9	45.621384	-61.464974	124.92	118	81.5	324.4
T9	616400.4	5051425.6	45.606622	-61.507286	140.95	118	81.5	340.5
T10	617775.4	5051350.6	45.605716	-61.489677	147.58	118	81.5	347.1
T11	617800.4	5052475.6	45.615834	-61.489085	142.01	118	81.5	341.5
T12	618912.6	5053159.2	45.621795	-61.474658	137.32	118	81.5	336.8
T13	618419.4	5053741.9	45.627123	-61.480841	144.74	118	81.5	344.2
T14	616600.4	5052600.6	45.617161	-61.504441	129.73	118	81.5	329.2
T15	618475.4	5052325.6	45.61437	-61.480467	147.34	118	81.5	346.8
T16	621475.4	5052875.6	45.6188	-61.441867	122.72	118	81.5	322.2
T17	620750.4	5053300.6	45.622751	-61.451058	120.55	118	81.5	320.1
T18	619225.4	5051750.6	45.609068	-61.470992	146.2	118	81.5	345.7
T19	618225.4	5051650.6	45.608339	-61.483836	143.48	118	81.5	343.0
T20	616700.4	5052000.6	45.611746	-61.503303	135.98	118	81.5	335.5
T21	620150.4	5053375.6	45.623529	-61.458733	129.22	118	81.5	328.7
T22	617475.4	5053200.6	45.622412	-61.493077	149.51	118	81.5	349.0

Thank you for your time and consideration of this Project. Upon review, should you have any questions, or concerns, or identify a need for additional information, please do not hesitate to contact a member of our team and we will follow up with you directly. Your feedback and support in this matter is most appreciated.

Thank you,



David Foster, PhD  
Terrestrial Specialist, Project Coordinator  
Environmental Assessment & Approvals  
[dfoster@strum.com](mailto:dfoster@strum.com)



Matthew Savelle, BSc.  
Group Manager, Geomatics  
Environmental Assessment & Approvals  
[msavelle@strum.com](mailto:msavelle@strum.com)

September 22, 2025

**Rogers Communications**

333 Bloor Street East  
Toronto, ON M4W 1G9

To whom it may concern,

**Re: Electromagnetic Interference Study  
Green Current Wind Energy Project, Guysborough, Nova Scotia**

---

Strum Consulting, a Nova Scotia-based environmental and engineering consulting firm, has been retained by Green Current Renewable Energy Development Inc. (our client) to support the proposed Green Current Wind Energy Project (the "Project") located in Guysborough County, Nova Scotia.

On behalf of our clients, Strum is conducting an electromagnetic interference (EMI) study on the placement of 22 wind turbines near the communities of Mulgrave, Auld's Cove, Pirate Harbour, Frankville and East Havre Boucher in Guysborough County, Nova Scotia.

More specifically, Strum is soliciting feedback, details, and specifications of existing operations from stakeholders to determine if there would be any potential interference with your existing operations as a result of the proposed wind turbine installations. The turbine specifications are as follows:

- Total of 22 turbines
- Tip height of each turbine is 199.5 m
- Hub height of each turbine is 118 m
- 3-blade rotor; turbine blade sweep diameter is 163 m (blade length is 81.5 m)

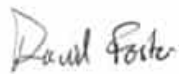
A map showing the proposed locations of the turbines is attached (Drawing 1); and a summary of the proposed turbine details, including coordinates and elevations, is provided in Table 1, below.

**Table 1: Proposed Turbine Locations & Specifications**

Turbine ID	Easting (UTM Z20)	Northing (UTM Z20)	Latitude	Longitude	Base of Turbine Elevation (m)	Turbine Hub Height (m)	Blade Length (m)	Total Elevation (m)
T1	620200.4	5054100.6	45.630044	-61.457913	134.39	118	81.5	333.9
T2	616075.4	5051975.6	45.611625	-61.511322	137.95	118	81.5	337.5
T3	621675.4	5053500.6	45.624389	-61.439147	103.53	118	81.5	303.0
T4	619875.4	5054575.6	45.634374	-61.461964	125.4	118	81.5	324.9
T5	618025.4	5053125.6	45.621644	-61.486043	140.67	118	81.5	340.2
T6	619146.0	5053996.3	45.629287	-61.471461	118.36	118	81.5	317.9
T7	619075.4	5052400.6	45.614942	-61.472756	137.95	118	81.5	337.5
T8	619668.5	5053127.9	45.621384	-61.464974	124.92	118	81.5	324.4
T9	616400.4	5051425.6	45.606622	-61.507286	140.95	118	81.5	340.5
T10	617775.4	5051350.6	45.605716	-61.489677	147.58	118	81.5	347.1
T11	617800.4	5052475.6	45.615834	-61.489085	142.01	118	81.5	341.5
T12	618912.6	5053159.2	45.621795	-61.474658	137.32	118	81.5	336.8
T13	618419.4	5053741.9	45.627123	-61.480841	144.74	118	81.5	344.2
T14	616600.4	5052600.6	45.617161	-61.504441	129.73	118	81.5	329.2
T15	618475.4	5052325.6	45.61437	-61.480467	147.34	118	81.5	346.8
T16	621475.4	5052875.6	45.6188	-61.441867	122.72	118	81.5	322.2
T17	620750.4	5053300.6	45.622751	-61.451058	120.55	118	81.5	320.1
T18	619225.4	5051750.6	45.609068	-61.470992	146.2	118	81.5	345.7
T19	618225.4	5051650.6	45.608339	-61.483836	143.48	118	81.5	343.0
T20	616700.4	5052000.6	45.611746	-61.503303	135.98	118	81.5	335.5
T21	620150.4	5053375.6	45.623529	-61.458733	129.22	118	81.5	328.7
T22	617475.4	5053200.6	45.622412	-61.493077	149.51	118	81.5	349.0

Thank you for your time and consideration of this Project. Upon review, should you have any questions, or concerns, or identify a need for additional information, please do not hesitate to contact a member of our team and we will follow up with you directly. Your feedback and support in this matter is most appreciated.

Thank you,



David Foster, PhD  
Terrestrial Specialist, Project Coordinator  
Environmental Assessment & Approvals  
[dfoster@strum.com](mailto:dfoster@strum.com)



Matthew Savelle, BSc.  
Group Manager, Geomatics  
Environmental Assessment & Approvals  
[msavelle@strum.com](mailto:msavelle@strum.com)



September 22, 2025

**Seaside Communications**

Email: support@seaside.ns.ca

To whom it may concern,

**Re: Electromagnetic Interference Study  
Green Current Wind Energy Project, Guysborough, Nova Scotia**

---

Strum Consulting, a Nova Scotia-based environmental and engineering consulting firm, has been retained by Green Current Renewable Energy Development Inc. (our client) to support the proposed Green Current Wind Energy Project (the "Project") located in Guysborough County, Nova Scotia.

On behalf of our clients, Strum is conducting an electromagnetic interference (EMI) study on the placement of 22 wind turbines near the communities of Mulgrave, Auld's Cove, Pirate Harbour, Frankville and East Havre Boucher in Guysborough County, Nova Scotia.

More specifically, Strum is soliciting feedback, details, and specifications of existing operations from stakeholders to determine if there would be any potential interference with your existing operations as a result of the proposed wind turbine installations. The turbine specifications are as follows:

- Total of 22 turbines
- Tip height of each turbine is 199.5 m
- Hub height of each turbine is 118 m
- 3-blade rotor; turbine blade sweep diameter is 163 m (blade length is 81.5 m)

A map showing the proposed locations of the turbines is attached (Drawing 1); and a summary of the proposed turbine details, including coordinates and elevations, is provided in Table 1, below.

**Table 1: Proposed Turbine Locations & Specifications**

Turbine ID	Easting (UTM Z20)	Northing (UTM Z20)	Latitude	Longitude	Base of Turbine Elevation (m)	Turbine Hub Height (m)	Blade Length (m)	Total Elevation (m)
T1	620200.4	5054100.6	45.630044	-61.457913	134.39	118	81.5	333.9
T2	616075.4	5051975.6	45.611625	-61.511322	137.95	118	81.5	337.5
T3	621675.4	5053500.6	45.624389	-61.439147	103.53	118	81.5	303.0
T4	619875.4	5054575.6	45.634374	-61.461964	125.4	118	81.5	324.9
T5	618025.4	5053125.6	45.621644	-61.486043	140.67	118	81.5	340.2
T6	619146.0	5053996.3	45.629287	-61.471461	118.36	118	81.5	317.9
T7	619075.4	5052400.6	45.614942	-61.472756	137.95	118	81.5	337.5
T8	619668.5	5053127.9	45.621384	-61.464974	124.92	118	81.5	324.4
T9	616400.4	5051425.6	45.606622	-61.507286	140.95	118	81.5	340.5
T10	617775.4	5051350.6	45.605716	-61.489677	147.58	118	81.5	347.1
T11	617800.4	5052475.6	45.615834	-61.489085	142.01	118	81.5	341.5
T12	618912.6	5053159.2	45.621795	-61.474658	137.32	118	81.5	336.8
T13	618419.4	5053741.9	45.627123	-61.480841	144.74	118	81.5	344.2
T14	616600.4	5052600.6	45.617161	-61.504441	129.73	118	81.5	329.2
T15	618475.4	5052325.6	45.61437	-61.480467	147.34	118	81.5	346.8
T16	621475.4	5052875.6	45.6188	-61.441867	122.72	118	81.5	322.2
T17	620750.4	5053300.6	45.622751	-61.451058	120.55	118	81.5	320.1
T18	619225.4	5051750.6	45.609068	-61.470992	146.2	118	81.5	345.7
T19	618225.4	5051650.6	45.608339	-61.483836	143.48	118	81.5	343.0
T20	616700.4	5052000.6	45.611746	-61.503303	135.98	118	81.5	335.5
T21	620150.4	5053375.6	45.623529	-61.458733	129.22	118	81.5	328.7
T22	617475.4	5053200.6	45.622412	-61.493077	149.51	118	81.5	349.0

Thank you for your time and consideration of this Project. Upon review, should you have any questions, or concerns, or identify a need for additional information, please do not hesitate to contact a member of our team and we will follow up with you directly. Your feedback and support in this matter is most appreciated.

Thank you,



David Foster, PhD  
Terrestrial Specialist, Project Coordinator  
Environmental Assessment & Approvals  
[dfoster@strum.com](mailto:dfoster@strum.com)



Matthew Savelle, BSc.  
Group Manager, Geomatics  
Environmental Assessment & Approvals  
[msavelle@strum.com](mailto:msavelle@strum.com)