

Aulds Cove Wind Project

Predicted Wetlands

Study Area

Assessment Area

Proposed Turbine Location

NSNR Wetlands

Bog or Fen

Fen

Marsh

Swamp

Water

Potential WSS (NSE)

Utilities (line)

Existing Pipeline

Existing Transmission Lines

Transportation

Trans-Canada Highway

Road

Unpaved Road

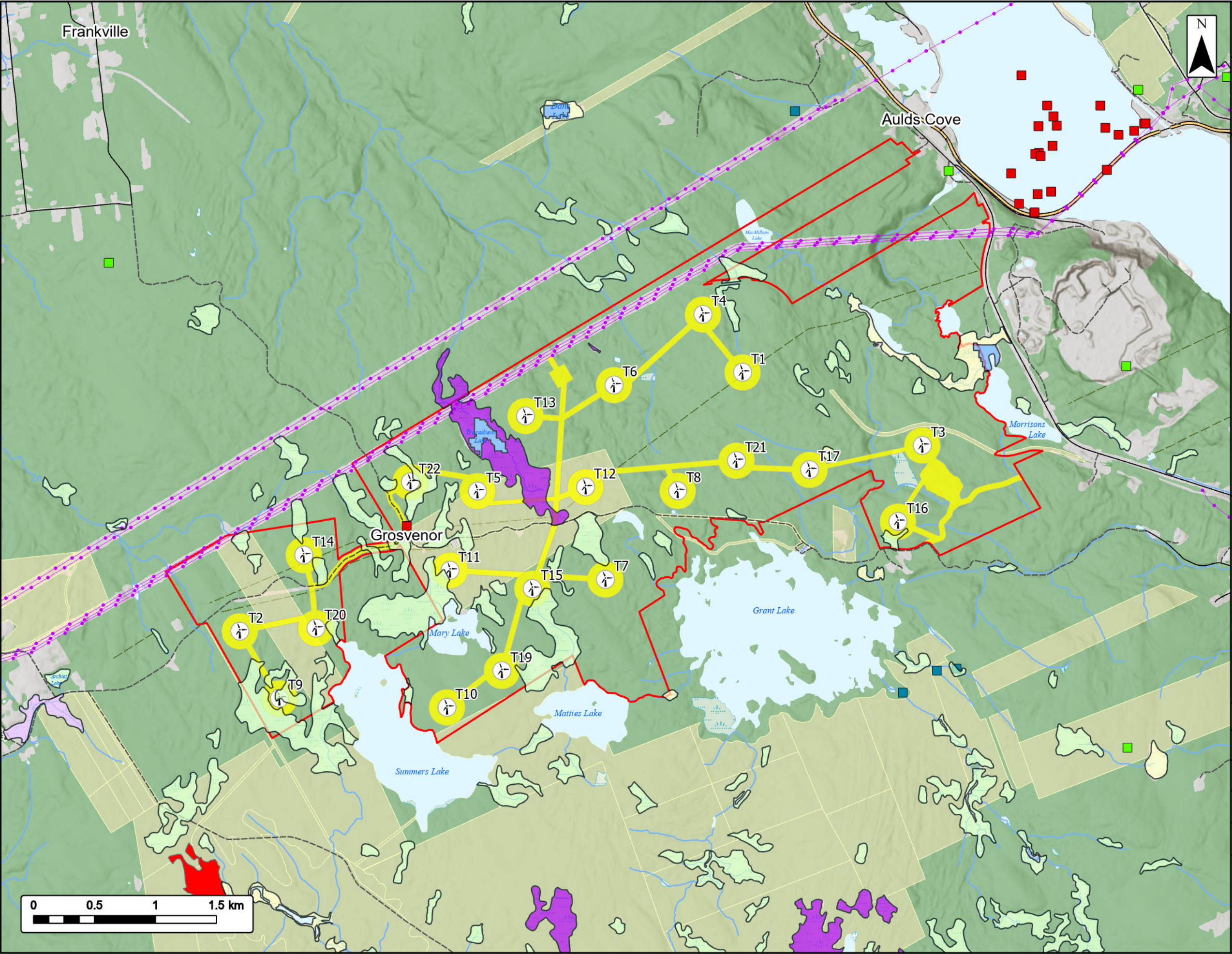
Water Features

Mapped Watercourse

Mapped Lakes and Rivers

Coordinate System: NAD 1983 CSRS UTM Zone 20N
Sources: Esri, NASA, NGA, USGS, Service Nova Scotia, GeoNOVA, SNSIS, NSNRR, ACCDC, IBA Canada, CNWI, HERE, Garmin

Date:	2025-12-08	Project #:	24-10440
Scale:	1:30,000	Drawing #:	7.18
Drawn By:	K. Wallace		
Checked By:	D. Foster		



Aulds Cove Wind Project

Desktop Vegetation Communities, Flora, and Fauna Results



Renewable Energy Development Inc.

Study Area

Assessment Area

Proposed Turbine Location

Crown Land

Old Growth Forest

ACCDC Pt. Data

Vertebrate Fauna

Nonvascular Flora

Vascular Flora

NSNR Wetlands

Bog or Fen

Fen

Marsh

Swamp

Water

Utilities (line)

Existing Power

Transmission Lines

Transportation

Trans-Canada Highway

Road

Unpaved Road

Water Features

Mapped Watercourse

Mapped Lakes and Rivers

Mapped Wet Areas



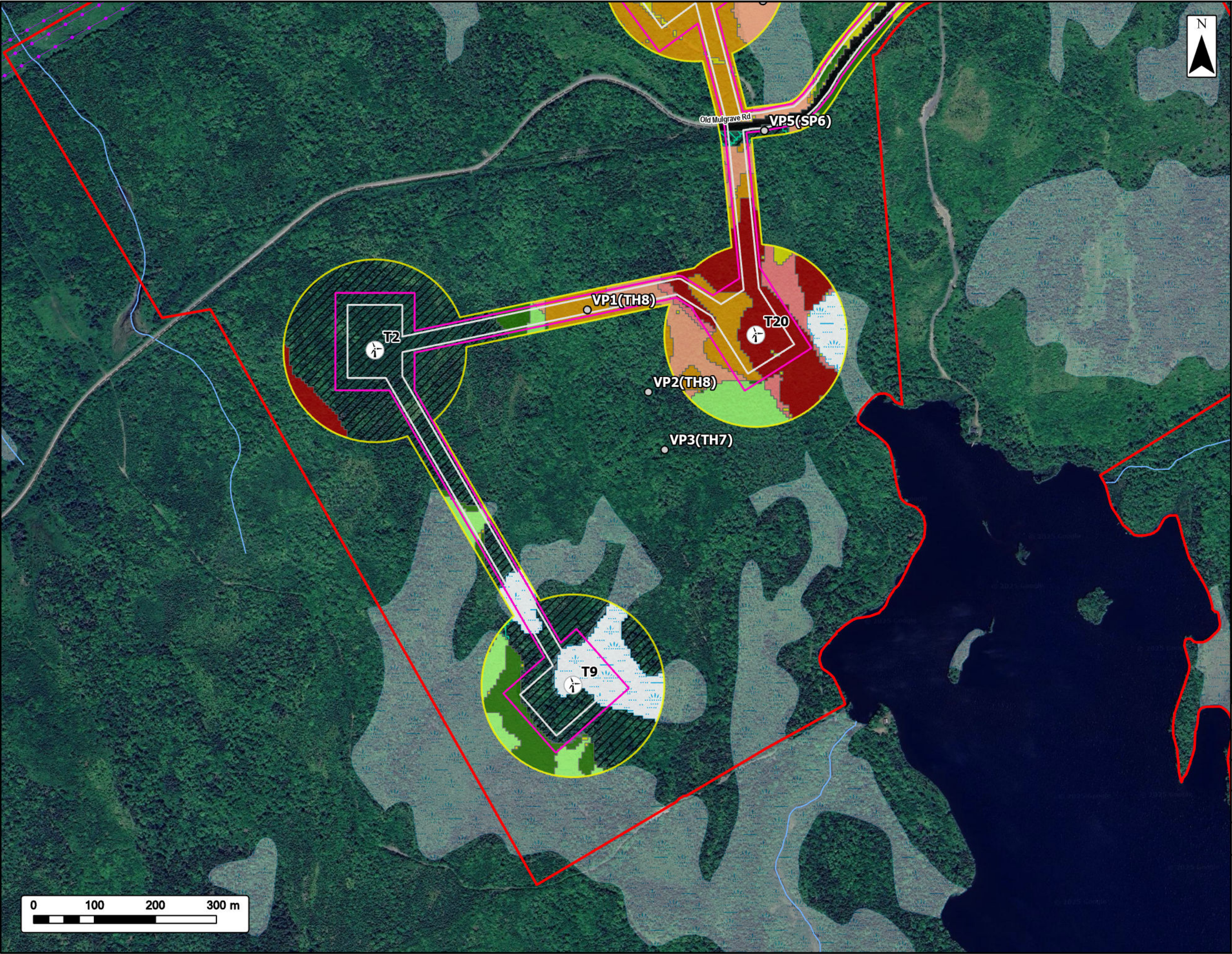
0 50 100 200 km

Coordinate System: NAD 1983 CSRS UTM Zone 20N
Sources: Esri, NASA, NGA, USGS, Service Nova Scotia, GeoNOVA, NSNRR, ACCDC, IBA Canada, CNWI, HERE, Garmin

Date:	2025-12-08	Project #:	24-10440
Scale:	1:30,000	Drawing #:	7.19
Drawn By:	K. Wallace		
Checked By:	D. Foster		




strum
CONSULTING



Aulds Cove Wind Project

Predicted Land Cover and Vegetation Community Assessment Points



Renewable Energy Development Inc.

Study Area

Assessment Area

Proposed Turbine Location

Project Footprint

Clearing Footprint

Vegetation Community Point (VP)

Cutover

Cutover Wetland

Hardwood Forest

Hardwood Wet Forest

Mixedwood Forest

Mixedwood Wet Forest

Open Areas

Open Wetland

Softwood Forest

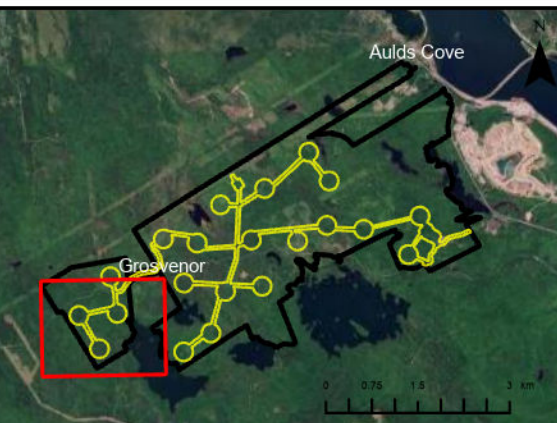
Softwood Wet Forest

Urban/ Developed

Utilities (line)
Existing Transmission Lines

Transportation
Unpaved Road


Water Features
Mapped Watercourse
Mapped Wet Areas

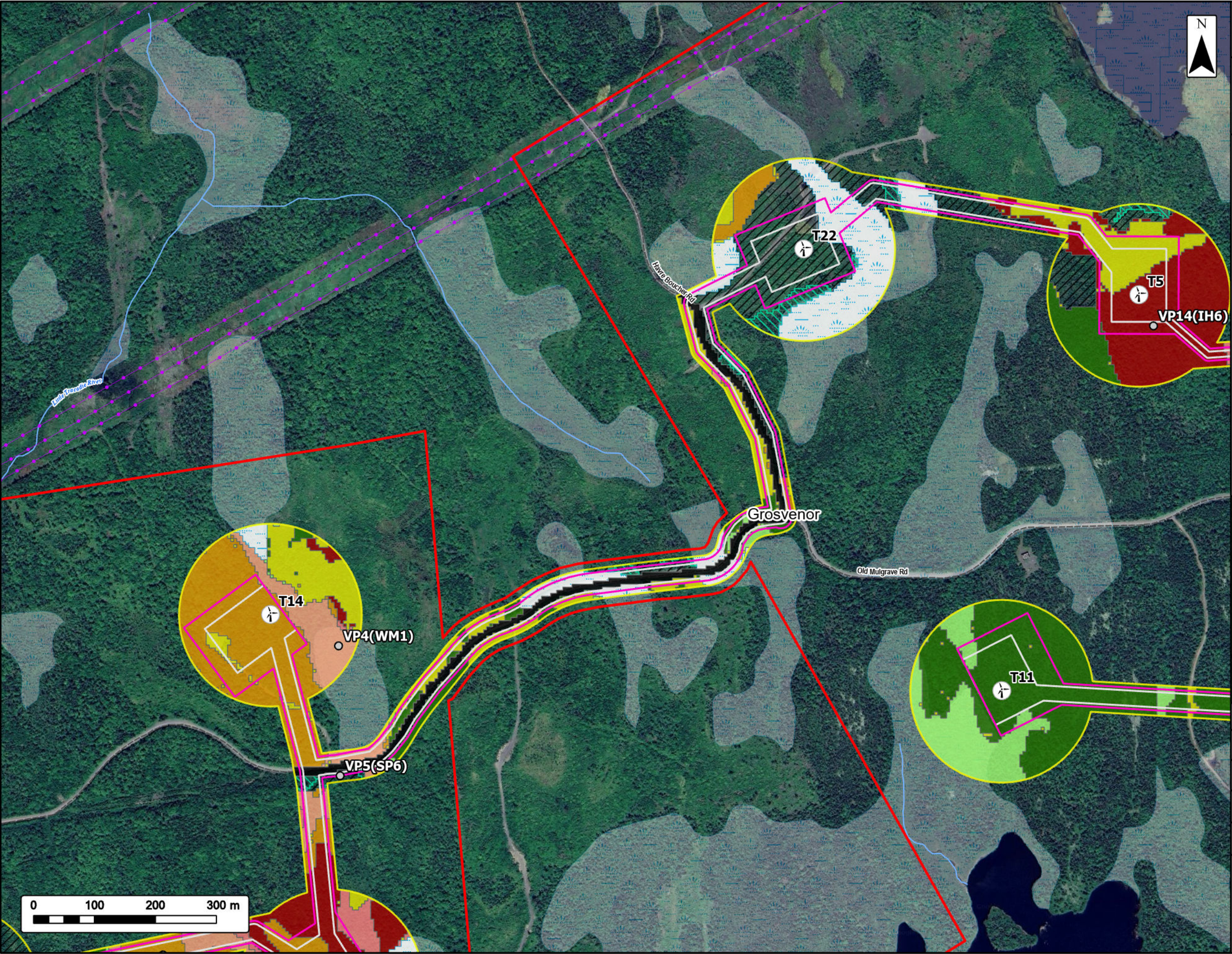


Aulds Cove
Grosvenor

Coordinate System: NAD 1983 CSRS UTM Zone 20N
Sources: © OpenStreetMap (and) contributors, CC-BY-SA, GeoNOVA, SNSIS, NSNRR, ACCDC, IBA Canada, CNWI, HERE, Garmin, USGS

Date:	2025-12-08	Project #:	24-10440
Scale:	1:6,000	Drawing #:	7.20A
Drawn By:	K. Wallace		
Checked By:	D. Foster		





Aulds Cove Wind Project

Predicted Land Cover and Vegetation Community Assessment Points

GREENCURRENT
Renewable Energy Development Inc.

Study Area

Assessment Area

Proposed Turbine Location

Project Footprint

Clearing Footprint

Vegetation Community Point (VP)

Cutover

Cutover Wetland

Hardwood Forest

Hardwood Wet Forest

Mixedwood Forest

Mixedwood Wet Forest

Open Areas

Open Wetland

Softwood Forest

Softwood Wet Forest

Urban/ Developed

Utilities (line)

Existing Transmission Lines

Transportation

Unpaved Road

Water Features

Mapped Watercourse

Mapped Wet Areas

VP14(IH6)

T5

T22

T14

VP4(WM1)

VP5(SP6)

T11

Grosvenor

Old Mulgrave Rd

Have Boucher Rd

0 100 200 300 m

Coordinate System: NAD 1983 CSRS UTM Zone 20N
Sources: © OpenStreetMap (and) contributors, CC-BY-SA, GeoNOVA, SNSIS, NSNRR, ACCDC, IBA Canada, CNWI, HERE, Garmin, USGS

Date:	2025-12-08	Project #:	24-10440
Scale:	1:6,000	Drawing #:	7.20B
Drawn By:	K. Wallace		
Checked By:	D. Foster		


strum
CONSULTING

VAV



Aulds Cove Wind Project

Predicted Land Cover and Vegetation Community Assessment Points



Renewable Energy Development Inc.

Study Area

Assessment Area

Proposed Turbine Location

Project Footprint

Clearing Footprint

Vegetation Community Point (VP)

Cutover

Cutover Wetland

Hardwood Forest

Hardwood Wet Forest

Mixedwood Forest


Mixedwood Wet Forest

Open Areas

Open Wetland

Softwood Forest

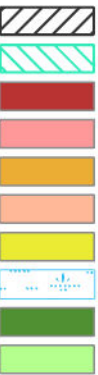
Softwood Wet Forest





Water Features


Mapped Watercourse


Mapped Wet Areas





 Cutover


 Cutover Wetland


 Hardwood Forest

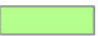
 Hardwood Wet Forest


 Mixedwood Forest


 Mixedwood Wet Forest

 Open Areas

 Open Wetland

 Softwood Forest

 Softwood Wet Forest



Aulds Cove


Grosvenor

0 0.75 1.5 3 km


Coordinate System: NAD 1983 CSRS UTM Zone 20N

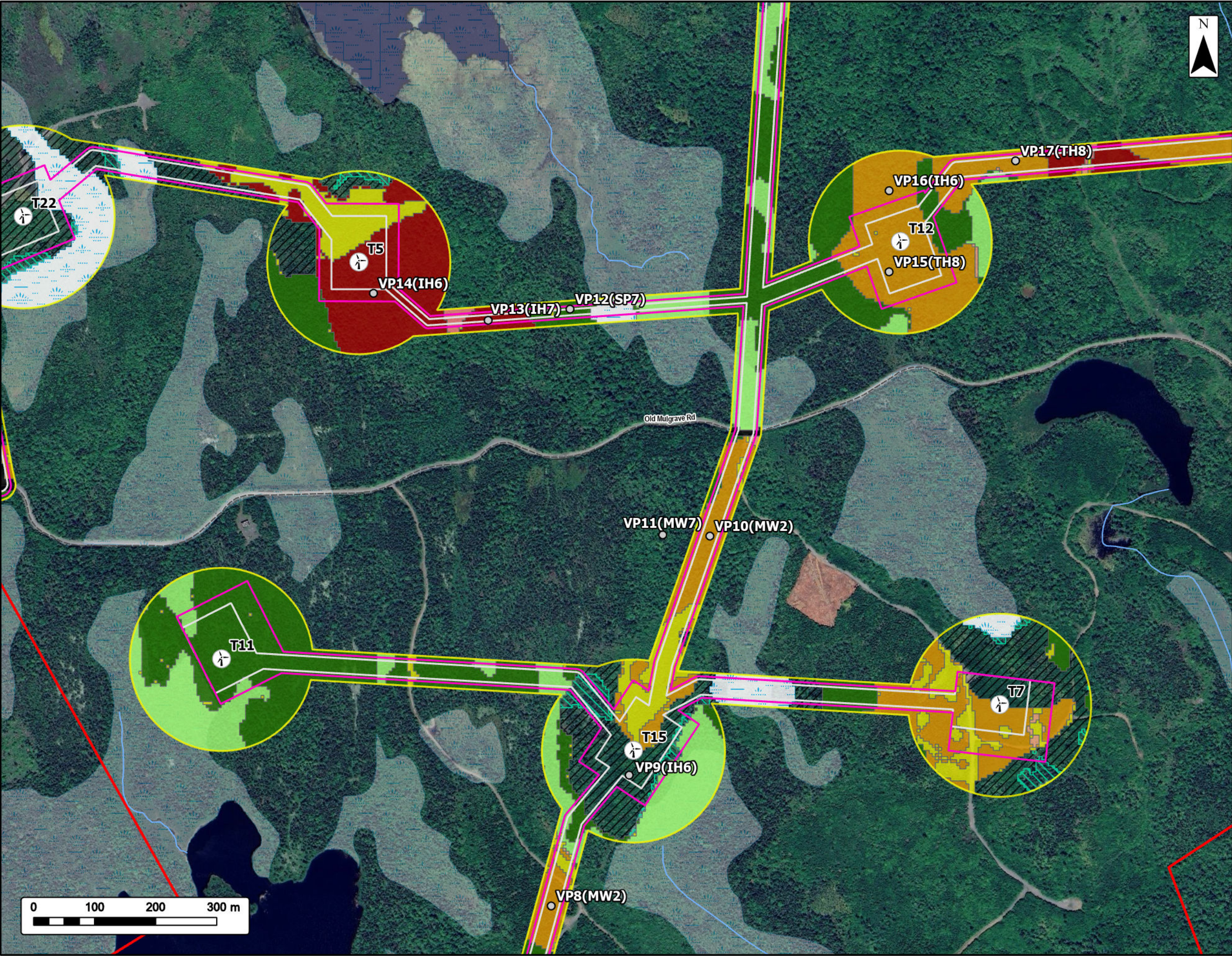
Sources: © OpenStreetMap (and) contributors, CC-BY-SA, GeoNOVA, SNSIS, NSNRR, ACCDC, IBA Canada, CNWI, HERE, Garmin, USGS

Date:	2025-12-08	Project #:	24-10440
Scale:	1:6,000	Drawing #:	7.20C
Drawn By:	K. Wallace		
Checked By:	D. Foster		



strum
CONSULTING



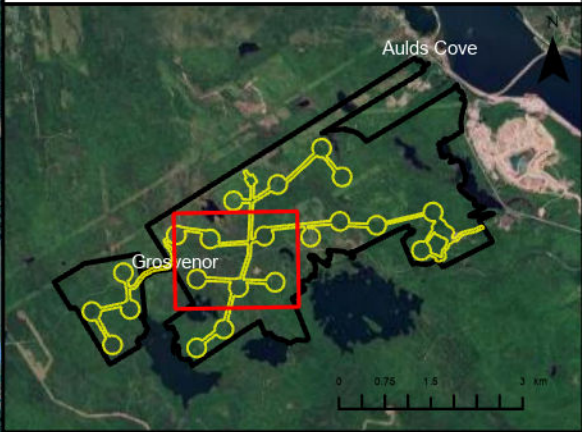


Aulds Cove Wind Project

Predicted Land Cover and Vegetation Community Assessment Points



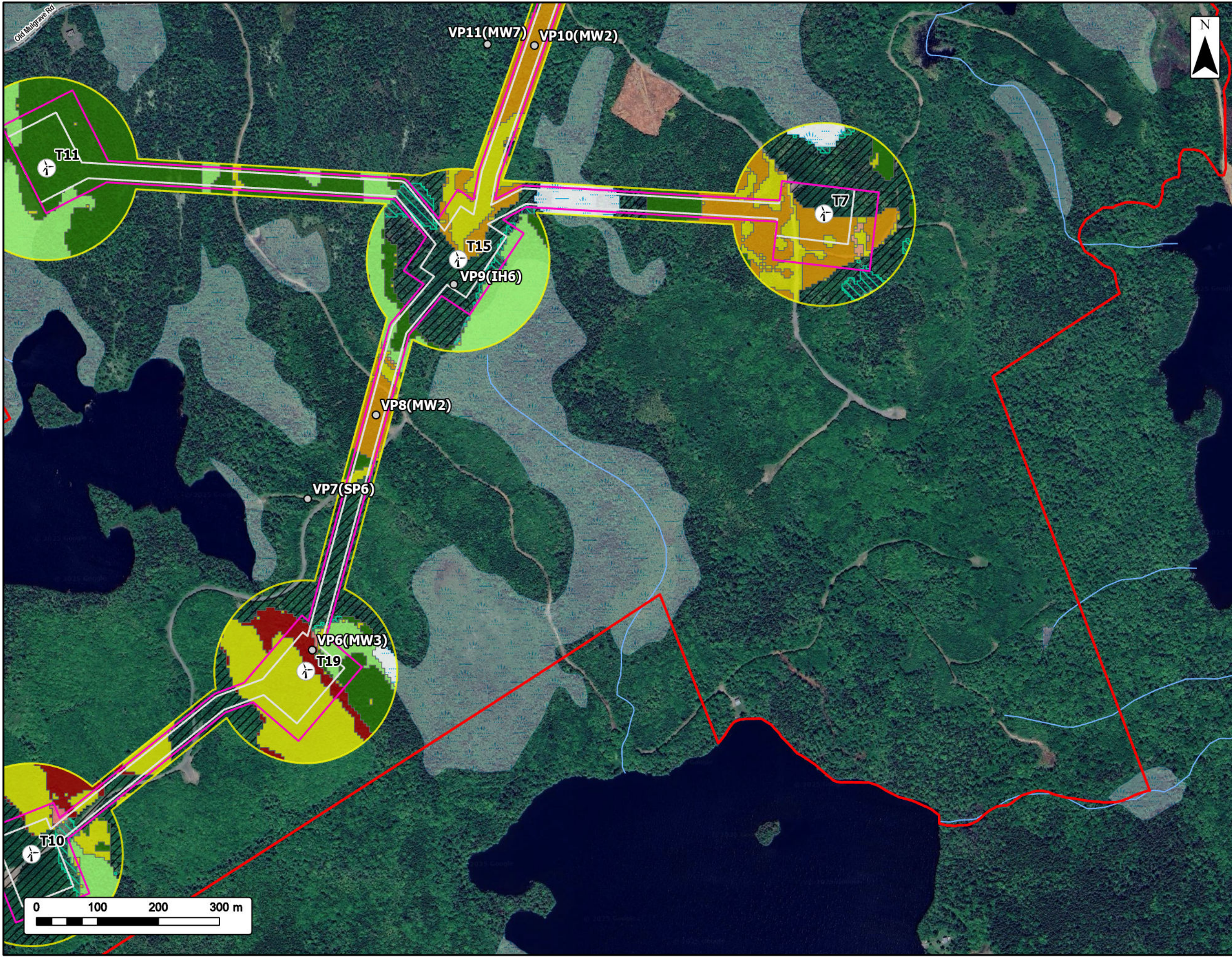
Study Area		Utilities (line)
Assessment Area		Existing Transmission Lines
Proposed Turbine Location		Transportation
Project Footprint		Unpaved Road
Clearing Footprint		Water Features
Vegetation Community Point (VP)		Mapped Watercourse
		Mapped Wet Areas
Cutover		
Cutover Wetland		
Hardwood Forest		
Hardwood Wet Forest		
Mixedwood Forest		
Mixedwood Wet Forest		
Open Areas		
Open Wetland		
Softwood Forest		
Softwood Wet Forest		
Urban/ Developed		



Coordinate System: NAD 1983 CSRS UTM Zone 20N
Sources: © OpenStreetMap (and) contributors, CC-BY-SA, GeoNOVA, SNSIS, NSNRR, ACCDC, IBA Canada, CNWI, HERE, Garmin, USGS

Date:	2025-12-08	Project #:	24-10440
Scale:	1:6,000	Drawing #:	7.20D
Drawn By:	K. Wallace		
Checked By:	D. Foster		





Aulds Cove Wind Project

Predicted Land Cover and Vegetation Community Assessment Points

GREENCURRENT
Renewable Energy Development Inc.

Study Area

Assessment Area

Proposed Turbine Location

Project Footprint

Clearing Footprint

Vegetation Community Point (VP)

Cutover

Cutover Wetland

Hardwood Forest

Hardwood Wet Forest

Mixedwood Forest

Mixedwood Wet Forest

Open Areas

Open Wetland

Softwood Forest

Softwood Wet Forest

Transportation

Unpaved Road

Water Features

Mapped Watercourse

Mapped Wet Areas

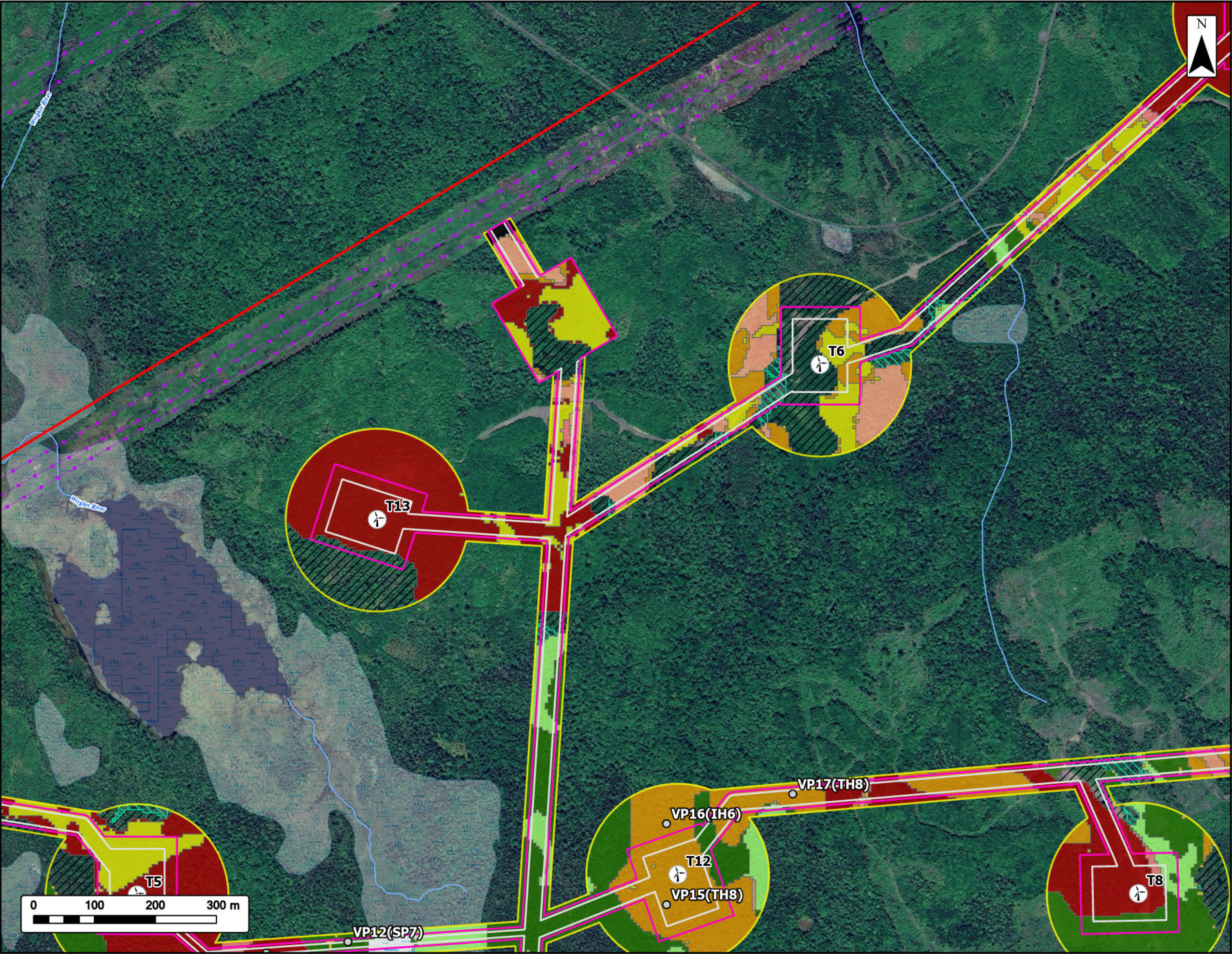
0 100 200 300 m

0 0.75 1.5 3 km

Coordinate System: NAD 1983 CSRS UTM Zone 20N
Sources: © OpenStreetMap (and) contributors, CC-BY-SA, GeoNOVA, SNSIS, NSNRR, ACCDC, IBA Canada, CNWI, HERE, Garmin, USGS

Date:	2025-12-08	Project #:	24-10440
Scale:	1:6,000	Drawing #:	7.20E
Drawn By:	K. Wallace		
Checked By:	D. Foster		

strum
CONSULTING



Aulds Cove Wind Project

Predicted Land Cover and Vegetation Community Assessment Points

GREENCURRENT
Renewable Energy Development Inc.

Study Area

Assessment Area

Proposed Turbine Location

Project Footprint

Clearing Footprint

Vegetation Community Point (VP)

Cutover

Cutover Wetland

Hardwood Forest

Hardwood Wet Forest

Mixedwood Forest

Mixedwood Wet Forest

Open Areas

Open Wetland

Softwood Forest

Softwood Wet Forest

Urban/ Developed

Utilities (line)

Existing Transmission Lines

Water Features

Mapped Watercourse

Mapped Wet Areas

0 100 200 300 m

Coordinate System: NAD 1983 CSRS UTM Zone 20N
Sources: © OpenStreetMap (and) contributors, CC-BY-SA, GeoNOVA, SNSIS, NSNRR, ACCDC, IBA Canada, CNWI, HERE, Garmin, USGS

Date: 2025-12-08

Scale: 1:6,000

Drawn By: K. Wallace

Checked By: D. Foster

Project #: 24-10440

Drawing #: 7.20F

strum
CONSULTING

VAV