

Clydesdale Ridge Wind Project

NOVEMBER 2, 2023 UPDATE: Natural Forces and RMS Energy intend to bid the proposed Clydesdale Ridge Wind Project into the provincial Green Choice Program Request for Proposals. Updates will be posted here on the project website and will be sent to

Mailing List

To join the mailing list for the Clydesdale Ridge Wind Project, please click on the link below and fill out your contact information.

[CLICK HERE TO JOIN THE CLYDESDALE RIDGE WIND PROJECT MAILING LIST](#)

About the Project

This project is located in Mi'kmaki, the ancestral territory of the Mi'kmaq. Natural Forces acknowledges that working on these lands is a privilege that comes with a great deal of responsibility. We believe that private companies have an important role to play in the decolonization of the energy sector and, ultimately, the path towards reconciliation through partnerships and meaningful engagement. To honour and achieve this, we must look forward for generations and integrate the practices and knowledge of the original land stewards, the Mi'kmaq, into project planning.

The proposed Clydesdale Ridge Wind Project is being developed by a partnership formed between Natural Forces, RMS Energy, and W'skijnu'k M'rmotaquow Agency Ltd (the Agency), a limited partnership made up of the 13 Mi'kmaq bands in Nova Scotia. Together, the partnership will develop, construct, operate, and own the project.

The initial plans are for the proposed project to consist of an estimated 19 wind turbines. Depending on which wind turbine

CONTACT



Project updates

Provincial Green Choice Program Request for Proposals Update

Natural Forces intends to bid the proposed Clydesdale Ridge Wind Project into the provincial Green Choice Program Request for Proposals. More information about the Program can be found [here](#). Associated project updates will be posted here and sent to the Project mailing list as they become available.

Project Milestone Timeline

December 2021 - January 2022 - three open houses were hosted at the Kemptown Community Hall, two open houses were hosted at the Dalhousie Mt Snowmobile Clubhouse, and one open house was hosted at the West River Fire Hall

April 2022 - New environmental studies began on site

May 2022 - Project was bid into the Nova Scotia Rate Base Procurement Program

February 2023 - The new Colchester County Wind Turbine Development Bylaw came into effect. Information can be found [here](#).

September 2023 - Two meteorological towers were installed on site to collect wind resource data

November 2023 - Notice sent to community members of the intention to bid the project into the Green Choice Program

[CONTACT](#)

RMS Energy

RMS Energy is a full service wind turbine maintenance company based in Nova Scotia. RMS Energy oversees several different aspects of wind energy: development; construction; management; and operations including maintenance of large scale and community-based projects.

Alongside involvement in other wind projects in Nova Scotia, RMS Energy maintains and operates the Dalhousie Mountain Wind Farm near Mount Thom, Nova Scotia.

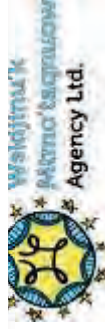
To learn more about RMS Energy, please visit their website [here](#).



Natural Forces

Natural Forces is an independent power producer that develops, owns, and operates renewable energy projects. Natural Forces was established in 2001 and has its head office in Halifax, NS, as well as regional offices in Chetwynd, British Columbia; Quispamsis, New Brunswick; Dublin, Ireland; and New York State. Collectively, Natural Forces has close to 300 MW of renewable energy projects in operation across Canada, with several ongoing projects at various stages of completion in Nova Scotia, New Brunswick, Prince Edward Island, Labrador, Saskatchewan, British Columbia, Ireland, and New York.

The senior management team at Natural Forces has over 70 years of combined renewable energy experience encompassing all project life cycle activities in a range of international locations including Canada, Ireland, Poland, the UK, and Australia. Natural Forces is an integrated developer and operator of renewable energy assets. The in-house team undertakes all activities from initial site selection, development, financing, construction, operations, and asset management. Our vision is to develop, construct, operate, and own

[CONTACT](#)

W 30NJUU 8 IVUUU 8YUQUUW 8YUQUY

Limited (The Agency)

The Agency is a limited partnership created by the 13 Mi'kmaq bands in Nova Scotia, which was created to develop partnerships with industry leaders.

Recognizing the need to build capacity and work with experts to participate in opportunities happening in Mi'kmaqi, the 13 bands created the Agency to pursue and manage business opportunities for the Mi'kmaq Nation.

The Agency is overseen by a five member board, that is currently comprised of three Chief nominated members' board seats and two seats filled by community members. The board's responsibilities include meeting with companies to evaluate potential partnership opportunities and managing these ongoing relationships. In addition to the Board, the Agency has shareholder seats that are filled by the Chiefs of the 13 bands.

CONTACT



When developing a wind project, it is crucial to find the most suitable location and community to host it. To do so, there are four main factors to consider during the site finding phase of development:

- Wind resource
- Distance to existing electrical and civil infrastructure
- Environmental sensitivity
- Socio-economic concerns

Nova Scotia has excellent wind resources, so generating electricity is feasible in many locations around the province.

Factors other than the strength and consistency of the wind must be taken into account when considering a site, such as proximity to the electricity grid, road access, ecology, archaeology, and cultural significance, proximity to residential dwellings, and health concerns.

The location of the Clydesdale Ridge Wind Project was selected after a thorough review of all of these factors.

The development of wind energy in Nova Scotia provides a clean and stable source of energy and positively impacts local communities in a variety of ways. These include economic spinoff through the increase in demand of local goods and services and job creation, most notably during the construction phase. Natural Forces is committed to engaging with all stakeholders and stakeholder groups throughout the lifetime of the project, as we value community input greatly. Below are details on the newsletters that have been sent to our stakeholders, as well as summaries of the information that has been shared at our open houses.

Newsletters

Natural Forces and RMS Energy have engaged with, and continues to engage with, stakeholders through a number of avenues, including newsletters. Each of the newsletters will be linked below:

November 2023

Natural Forces and RMS Energy will continue to host open houses throughout all phases of the project.

Open houses

Natural Forces and RMS Energy have held open houses to provide an opportunity for the community to engage with project staff. All of the information that will be presented at these open houses will be uploaded here.

Natural Forces and RMS Energy will continue to host open houses throughout all phases of the project.

CONTACT

1 - Development: Current Stage	2 - Construction	3 - Operation	4 - Decommission or Retrofit
<ul style="list-style-type: none"> Assess the wind resource Survey for environmentally sensitive features Optimize turbine location to capture the wind efficiently and minimize impact on sensitive features Begin consultation with regulators and the public Conduct and present the Environmental Impact Assessment for environmental approval 	<ul style="list-style-type: none"> Clear trees for roads and turbine pads Build access roads and pad areas Pour the turbine foundation Assemble the wind turbine Connect to NS Power's electrical grid 	<ul style="list-style-type: none"> Commission the wind turbines to start producing power Conduct post-construction wildlife monitoring Monitor remotely for real time alerts when additional maintenance is needed Operate for 30 years 	<ul style="list-style-type: none"> Assess wind turbine after 30 years Decommission wind turbines in 3-6 months Reclaim the site to its former state OR Receive approvals and permits to retrofit the turbine to continue harnessing energy

Environmental Impact Assessment

In Nova Scotia, any wind projects that exceed 2 MW in size are required to complete a provincial environmental impact assessment (EIA). During this process, an entire committee made of provincial and federal agencies evaluate the location and overall impact of the project on the surrounding environment and the public. As the Clydesdale Ridge Wind Project will produce up to approximately 70 MW of electricity, it is subject to an EIA.

To fully assess the potential environmental impacts of the project, the following comprehensive studies are being conducted:

- Wetlands and Watercourses Surveys
- Bird and Bat Surveys
- Mainland Moose Surveys
- Vegetation and Habitat Surveys
- Noise and Visual Assessments
- Radiocommunication Impact Assessments
- Archaeological Assessments

While the project did gain EIA approval from the Nova Scotia Minister of Environment and Climate Change in August 2012,

available for download below.

More information on the EIA process can be found on the [provincial EIA website](#).

Frequently Asked Questions

Question	Answer
<i>Will there be an impact to the environment?</i>	The project partners undertake rigorous environmental impact assessment studies ahead of construction to determine existing environmental sensitivities and potential impacts on the project to the environment. This information will be reviewed by provincial government officials and will be open for public comment.
<i>How close are the turbines to residences?</i>	In alignment with industry best practice and local bylaws, all turbine locations will be set back at least 1.0 km from all houses.

CONTACT

[Deann](#) page and links to additional studies can be found in the [following section](#).

For this project, the project partners will lease the majority of the land from private landowners. Agreements for a small area of provincial Crown land will also be required. Over the course of several years, we have developed trusted relationships with the landowners and in all instances the land remains in the ownership of the landowner and is leased for the duration of the project. No land has been leased from unwilling landowners.

During construction, the project partners will make every attempt to hire local contractors using our in-house construction management company, Natural Forces Construction, to ensure smaller contractors are able to participate.

Wind turbines have moving parts and therefore some sound can be expected. However, well-designed wind turbines are generally quiet in operation, and compared to the noise of road traffic, trains, aircraft, and construction activities, to name but a few, the sound from wind turbines is very low. As wind turbine technology has evolved, the sounds emitted have decreased. The further away you are from a project, the less sound it will make. This site will likely have trees and other barriers that would break a lot of the sound before it reaches homes. A typical wind project would have a noise level of between 35-45 decibels. For reference, the compressor of a refrigerator produces 40-45 decibels. (Check out the [Energy Nova Scotia Wind Page](#) for more information). Stories of excessive noise often come from areas where the turbines are very close to homes. Natural Forces follows the minimum standards for distance from residences laid out by local regulations, or a typical minimum of 1KM.

How did Natural Forces get the land for this project?

Can local companies take part during construction?

Are wind turbines noisy?

Get in touch with us

** INDICATES REQUIRED FIELD*

Name *

First	Last
-------	------

Email *

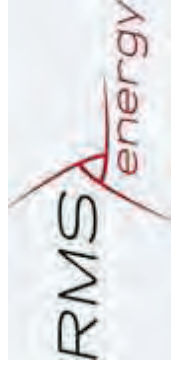
Message *

CONTACT

Halifax, NS
B3J 3M8

Meg Morris, Project Manager
902-483-9592
community@naturalforces.ca

Copyright © 2021


[HOME](#)
[ABOUT US](#)
[CONTACT US](#)
[SERVICES](#)
[COMFIT PROJECTS](#)
[TRANSMISSION PROJECTS](#)
[PHOTO GALLERY](#)

Clydesdale Ridge

November 2, 2023 Update: Natural Forces and RMS Energy intend to bid the proposed Clydesdale Ridge Wind Project into the provincial Green Choice Program Request for Proposals. Updates will be posted here on the project website and will be sent to our mailing list, which you can join below. The following notice was sent to members of the surrounding community: [November 2023 Green Choice Program Notice](#)

For additional project information or to join the Clydesdale Ridge Wind Project mailing list, please visit the project webpage on Natural Forces' website [here](#).

The proposed Clydesdale Ridge Wind Project is being developed by a partnership formed between Natural Forces, RMS Energy, and Wskijnu'k Mtmo'tagnuow Agency Ltd (the Agency), a limited partnership made up of the 13 Mi'ikmaw bands in Nova Scotia. Together, the partnership will develop, construct, operate, and own the project.

The initial plans are for the proposed project to consist of an estimated 19 wind turbines. Depending on which wind turbine generators are deemed most appropriate for the project, these 19 turbines could have a total installed capacity up to approximately 70 MW. The project is located on the border between Colchester County and Pictou County in the Berichan area, approximately 7 km northwest of the operational Dalhousie Mountain Wind Farm.

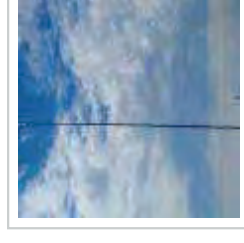
Project Stats

Up to 19 Wind Turbines / ~70 MW Production

Operation start Currently under Development

Owner: Clydesdale Wind L.P.

Project Gallery



In September 2023, the project partners installed two meteorological towers on the project site. These meteorological towers are fitted with instrumentation to collect wind resource and atmospheric data.

While the Clydesdale Ridge Wind Project did gain Environmental Impact Assessment (EIA) approval from the Nova Scotia Minister of Environment and Climate Change in August 2012, due to the time that has passed, the project partners are working to complete a new EIA. As such, experts, including biologists, botanists, and birders, were hired in 2022 to begin environmental studies on the project site and have continued their work through 2023. The final studies will be carried out in 2024. The results from these studies will be compiled in the EIA document that will be registered with the province.

Copyright 2023 RMS Energy

We Are All Treaty People who live and work in the unceded ancestral territory of the Mi'kmaq people.
Website designed and developed by Webbuilders Group



Natural Forces and RMS Energy intend to bid a proposed wind energy project located approximately 7 km northwest of the operational Dalhousie Mountain Wind Farm into the provincial Green Choice Program Request for Proposals. This project is located in the Berichan area on the border between Colchester County and Pictou County.

Project updates will be published on the project website and sent to our mailing list as they become available. For more information, or to join our mailing list please contact:

Meg Morris, Project Manager

📞 902-483-9592

✉ community@naturalforces.ca



CLYDESDALE RIDGE WIND PROJECT

FEBRUARY 2024 NEWSLETTER

CLYDESDALE RIDGE WIND PROJECT INFORMATION SESSION

THURSDAY MARCH 21, 2024
4:00-7:00 PM

Kempton Community Centre
59 Loop Old Hwy 4
Kempton, NS B6L 2M4

*This event was previously scheduled for March 6th



ABOUT THE PROJECT

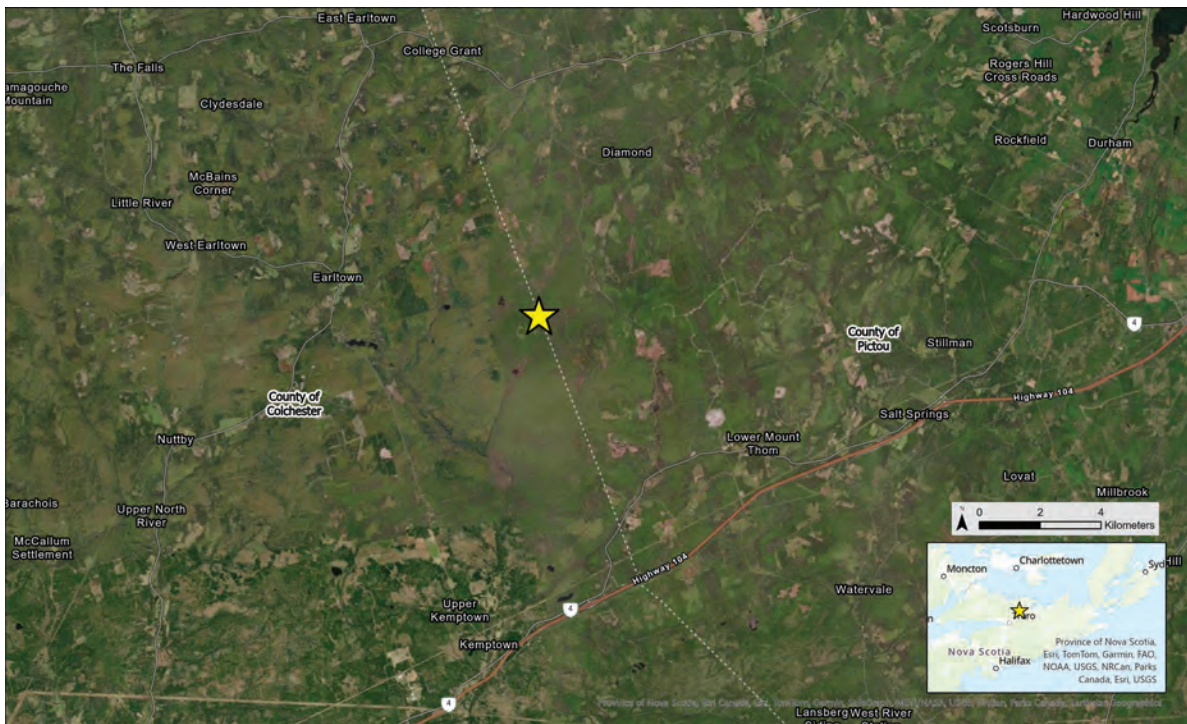
The proposed Clydesdale Ridge Wind Project is located on the border between Colchester County and Pictou County in the Berichan area, approximately 7 km northwest of the operational Dalhousie Mountain Wind Farm. The initial plans are for the Project to consist of up to 18 wind turbines. The Project is proposed to have a total installed capacity of approximately 70 MW.

ABOUT THE PROPONENT

The Project is being developed and will be constructed, owned, and operated by a partnership between RMS Energy and Natural Forces (the Project Partners). RMS Energy is a full-service wind turbine maintenance company and Natural Forces is an independent power producer. Both companies are based in Nova Scotia and have experience developing, constructing, owning, and operating renewable energy projects. The Project Partners intend to bid the Clydesdale Ridge Wind Project into the upcoming provincial Green Choice Program Request for Proposals.

COMMUNITY LIAISON COMMITTEE

A Community Liaison Committee (CLC) facilitates communication between project proponents, local community members, and special interest groups throughout the lifetime of a project. The Project Partners are seeking interest for the formation of a CLC for the Clydesdale Ridge Wind Project to discuss project information and any local ideas and concerns. If you are interested in joining a CLC for the Project in a voluntary capacity, please reach out to us at the contact information below.



CONTACT US

If you have any questions or comments, please contact Meg Morris, Project Manager at community@naturalforces.ca, (902) 483-9592, or visit clydesdaleridgewindproject.ca

Thank you St. Jude
for favours received.
V.A.F.



The Complaints Investigation Committee
of the Nova Scotia Barriers Society
gives notice that

Donn Fraser

of New Glasgow, Nova Scotia
has been reinstated, with conditions,
pursuant to Section 37(5)(b) of the *Legal
Profession Act*, effective
December 13, 2021.



**Administration Office
2021 HOLIDAY HOURS**

Due to rising Covid-19 cases our office is now
closed to the Public but we are still at the office to
serve you by answering calls and email.

CLOSING

Friday, December 24, 2021 at 12 noon

REOPENING

Tuesday, January 4, 2022 at 9:00 am

On behalf of Town Council and staff we would like to
wish everyone a safe and Happy Holiday.

For emergencies related to streets, water
or sewer contact Public Works at 902-485-5390 or
902-759-4026

Notice of Public Meeting

The proposed Clydesdale Ridge Wind Farm is lo-
cated between Dalhousie Mountain and the Ber-
con Road in Clydesdale, Colchester County. In
July 2012 the project gained environmental as-
sessment approval from the Minister to install 28
more GE wind turbines connecting Clydesdale to
the existing Dalhousie Mountain Farm substation
located on Mount Thom. Dalhousie Mountain has
been operational since 2009 powering over 22,000
homes annually while creating 10 full time techni-
cal jobs plus over 30 indirect jobs.

Dalhousie Wind Farms will build and operate this
project together with,

- Local contractors, electrical, industrial, construc-
tion
- Local investors, First Nation participation, long
term ownership opportunity and stable IRR,
- Local stakeholders, municipal councillors, trails
and recreation

RMS Dalhousie has been operational for 12 years
with 45 turbines in the same community and in or-
der to continue with a strong community rela-
tionship we are reaching out understand the impacts
of this development. The proposed wind turbines
are located 3 kilometers from homes, which is be-
yond the bylaw requirements of 1000 meters from
homes. The turbines will be located 300 meters
from existing public roads and 300 meters from
property lines. Any concerns about the location set
back in respect to property or homes please email
reuben@rmsenergy.ca with the civic address and
or PID # and I will respond with exact setback dis-
tances.

Public Meeting Dates

Date	Place	Time
Thursday Dec 2nd	Kempton Community Hall	6-7pm
Thursday Dec 9th	Dalhousie Mt. Snowmobile Clubhouse, Elmfield	6-9pm
Wednesday Dec 15th	Kempton Community Hall	4-6pm
Monday Dec 20th	West River Fire Hall	4-7pm
Friday Jan 7th	Dalhousie Mt. Snowmobile Club Hall	6-9pm
Wednesday Jan 12th	Kempton Community Hall	4-6pm

Website: WWW.RMSENERGY.CA

Email; comments, concerns, investment inquiry,
job inquiry and any construction contractor related
questions to info@rmsenergy.ca

OBITUARIES

WATT, Allan - 79, of Dartmouth peacefully passed away on December 5, 2021, with family by his side at the Dartmouth General Hospital. Born in Pictou on March 1, 1942, he was the son of the late Lawrence and Isabel (MacDonald) Watt. Allan helped his mother look after the family after his father's untimely passing in 1967. In his early years he worked on the ferries which travel between Nova Scotia and Prince Edward Island. He liked to golf and worked as a caddy at the Pictou Golf and Country Club. He graduated from the Technical University of Nova Scotia (TUNS) as a civil engineer. He inspired his son to follow in his footsteps. He worked hard and eventually ran his own construction company - Watt Construction Services Ltd. in Riverview New Brunswick. He was an innovator and obtained a patent for a rink design in the early 80's. He worked many hours, but he had a zest for life and still found time for family. He built a cottage in Malagash, Nova Scotia where lots of good family memories were made. There were ski trips including to Squaw Mountain, Maine. After he retired his children and grandchildren all were enjoyed summer visits in Halifax and nights out at the casino. He made lots of friends wherever he went. He was a cancer survivor. He valued family and cherished his children and grandchildren dearly. He taught his daughter to live life to the fullest. He returned to live in Pictou for a few years to look after his mother Isabel before she passed away in 2010. His big colorful personality, phone calls, and emails will be sorely missed. Allan is survived by his two children Jason (Ranika Prasad), Vancouver BC, and Jennifer (Kevin Blacklock) Port Elgin NB, three grandchildren, Zoey Watt, Brandon and Lindsey Blacklock, brother Larry (Sharon) Riverview NB, sister Margie (James Russell) Pictou NS, and several nieces and nephews. He was predeceased by his daughter, Christine, sister Wanda (Marv Deneau), and nephew Noah Russell. A special thank you to his good friend Grant Gilmore and his friends at Eastwood Manor. In keeping with Allan's wishes cremation has taken place and there will be no public memorial service.

MACLENNAN, A. Fisher, Bay View - It is with saddened hearts that we announce the passing of Andrew Fisher MacLennan, 83, of Bayview at the Aberdeen Hospital, New Glasgow on December 16, 2021. Born in Millsville on June 8, 1938, he was a son of the late Fisher and Ellen (McCara) MacLennan and the youngest of a family of eight children. Fisher retired in 2000 from Scotiabank Co-operative Services Ltd. after 43 years of loyal and dedicated service, having proudly established Scotiabank's bulk petroleum distribution business, helping it to grow to one of the largest in Pictou County at the time of his retirement. His last role was as Branch Manager of Scotiabank, where he was responsible for the Butter Plant, Feed Mill, Bulk Fuel and Hardware Store. He gained a great deal of respect from his employees and co-workers over the years. He was a loving husband to his wife Lynn (Sutherland), for 58 years spending most of their life in Scotsburn where they raised their three children, David (Brenda), Cheryl Galvin (Martin) and Paul (Jennifer). The couple enjoyed many years together traveling to various locations, fishing, being an annual favourite for many years. They particularly loved their trips to visit their daughter and her family throughout Canada, the States and Germany. He had been active in his community, volunteering on the Bethel Church Board of Managers and assisted with various community events over the years. Following his retirement, the couple moved back to Bay View, close to the family farm where he had spent many of his younger years. He spent his time taking great care of his property, gardens and enjoying many a laugh over card games with his family. In addition to his immediate family, he is survived by his seven grandchildren, Matthew (Sarah) Galvin, Ashley (Matt) Duda, Nigel and Riley MacLennan, Shelby, Tyler, and Justus MacLennan. He also had two great-grandchildren, Clayton Duda and Aeston Galvin whom he unfortunately never had the opportunity to meet due to COVID. Remaining living siblings include John (Ann) MacLennan and Sue Miller and several nieces and nephews. Fisher was predeceased by his parents and siblings, Lloyd, Marjorie Jenkins, Mary Campbell, Kathryn McCulloch, and Julia Hope. There will be no visitation to help limit the spread of COVID-19. A private family funeral was held at 1 p.m. on Sunday, December 19th from McLaren Funeral Home, with Rev. Dr. Glen Matheson officiating. Interment was in Bethel Cemetery. Family flowers only. Memorial donations may be made to the Alzheimer's Society. The funeral can be live streamed details on sympathy messages and live streamed link are available at www.mclarefuneral.ca.

MACDONALD, Owen E., Pictou - It is with heavy hearts that we announce the passing of Owen Ellsworth MacDonald, aged 83 years of Pictou, NS. Owen was born on January 2, 1938, on Pictou Island, the youngest son of John Angus and Viola (MacLennan) MacDonald, and in his younger days Owen fished off the East End of Pictou Island. He was a local Fisheries Representative, then proudly served as Assistant to the Minister of Fisheries, Dr. Dan Reid. After his political stint, he worked at Strigh-MacKay and Pictou Fishing Supplies. Owen met his wife Jean, who had moved from Montague, PEI to teach in 1962. They settled in Lyons Brook where they raised their four children. There were many years of camping, travelling and boating. Over the years, he had many boats on the water including his sailboat, Nauty-Kell, and his modified boat "Knot Wise", raced by his sons. Owen was raised to believe it was important to serve your community. He was a member of the Independent Order of Oddfellows and held several offices including Grand Master of the Atlantic Provinces, Noble Grand of Eastern Star Lodge #1, Chief Patriarch of Wawbeck #12, District Deputy Grand Master and the Home Board of the Oddfellows Home, Pictou, NS. Owen was a member of the Board of Managers and served as an elder for First Presbyterian Church, Pictou. He enjoyed singing in the choir and was a member of the chorus in Rotary Club plays. He was a past Pictou Kinsmen, Pictou Lions Club and Pictou Yacht Club member. Owen will be missed by his son, Shaun (Paula), Greenhill, and their sons Ryan, Travis and Nathan; son, Mark (Michelle), Lyons Brook, and their daughter Emma; daughter, Cynthia Robertson (Andrew), Pictou, and their children Liam, Brenna, Stephanie, Brittany, and Blake; daughter, Kelly Pidgeon (Michael), Salt Springs, and their children Patrick, Michael, Shannon and Lindsay. He is also remembered by his brother, Bill MacDonald (Ann Young), Pictou; nephew, Stuart MacDonald (Tracey), Sackville, NB; nieces, Gillian Connerbear (Richie), Tobago, Blanche McClair (Jim), Prince George, BC and cousin, Sheila Tobin (Michael), Braeshear. He was predeceased by his beloved wife, the former Jean Ferguson; his parents; brother, Clair MacDonald; and uncle, Fraser MacLean. The family are comforted in knowing that he spent his last days on his terms. This past summer he had a view overlooking the wharf and his birthplace from Logan's trailer park in Caribou. You could count on seeing him in his truck on the wharf to greet the fishermen and travellers from the Pictou Island Ferry. He enjoyed chatting with young and old and spoke fondly of the boys from the boat shop, and the friendly staff at Sharon's Place. He was an avid reader and knew about their recent visit to his favourite place, the Habs. The family would like to thank Dr. Olsson and the caring staff of the Aberdeen Hospital's Emergency Department and 4th Floor. Cremation has taken place, a celebration of life will be held at a later date. Memorial gifts in his memory may be made to The Lodge that Gives, or a charity of choice. www.mclarefuneral.ca

OBITUARIES

HENDERSON, Carl Cecil - 78, of the Shiretown Nursing Home, Pictou, and formerly of Tony River, passed away December 9, 2021, in the home, where he was a long-time resident. Born in Pictou, he was a son of the late Cecil and Janie (Hislop) Henderson. Carl was a fisherman and also worked on the family farm. Tony River was near and dear to his heart. He was an active member of the community, a regular at the card parties, dances, and barbecues. In his younger days he played hockey for the River John Trailblazers, and also sang in the choir at St. David's Presbyterian Church. While at the nursing home, Carl spent a lot of time on his exercise bike. Following Craig Acoino's tour, he decided to bike with Craig across Canada. He started in St. John's, Newfoundland and biked to Vancouver, British Columbia. He is survived by his brother, George (Sherry), Melville; sisters, Agnes MacNeill, and Brenda Thorne-Peckham, both of Pictou; several nephews and one niece. Besides his parents he was predeceased by sister, Shirley Heighiton; brothers-in-law, Earl MacNeill, Raymond Thorne and Ralph Peckham. Cremation has taken place and services will be held at a later date. The family would like to thank the staff at Shiretown Nursing Home for the wonderful care he received while living there. Donations in Carl's memory may be made to the Shiretown Nursing Home or St. David's Presbyterian Church, Tony River. www.mclarefuneral.ca

CAHOON, Dorothy Mantle, 1937-2021 - With family by her side, Dorothy Mantle Cahoon (née Collis) passed away on December 13, 2021 at the Ottawa General Hospital at the age of 84 from complications of myasthenia gravis. She was predeceased by her parents, Sidney and Phyllis Collis, and her sister, Alene Collis. She was also predeceased by her son, Lawrence Cahoon, whom she grieved until the day she died. Survived by children: Bruce Cahoon (Yolanda) of Port Coquitlam; Sidney Cahoon (Tanya) of Waterside; and Amanda McKay (John) of Ottawa; several grandchildren: Jade Cahoon, Kale Cahoon, Chris Cahoon, Kiersten Cahoon, Samuel McKay, Connor Cahoon, and great-grandchild, Theo Aelick. Adopted at birth, she was thrilled to connect later in life with her birth mother (the late Dorothy McKenna) and siblings, including her brothers Bernie McKenna (Heather) and the late Robert Taylor (Barbara); and Battist families. She cherished the love and belonging she received from them. She was fortunate to have a great group of friends that provided companionship, support, and laughter through the years. She had a wicked sense of humor and a fantastic laugh. Several close friends - Johanna Sutton (Halifax); Isabel Fancey (Union Centre); and Trudy Vince (Stellarton) - became like family to her, loving her unconditionally and now also grieving her loss. Dorothy was a great believer in public service and, through the years, volunteered for a number of different organizations including many years working in the gift shop and information desk of the Aberdeen Hospital in Nova Scotia, as well as with Lauback Literacy of Nova Scotia and the Muscular Dystrophy Association of Canada. Recently relocated from Stellarton, Nova Scotia, to be closer to her daughter in Ottawa, she received exceptional care at the Ottawa General Hospital after she fell ill. A retired R.N. herself, she was acutely aware of and grateful for the comprehensive efforts taken by the Ottawa General to treat her and the dignity she was afforded while there. The family would also like to especially thank past caregivers from the Victorian Order of Nurses (VON) Pictou County - Beth, Shelley, Evelyn, and Suzanne - as they showed her great compassion and provided a much-needed respite over the past few years. Donations in her memory can be made to the Muscular Dystrophy Association of Canada. She was a champion of research to fight this horrible disease and, as such, has donated her remains to the University of Ottawa Faculty of Medicine. A funeral service will be held at a later date in Nova Scotia. Known to white away the hours sitting in her garden reading a good book, the family will honour her memory through the Memorial Bench Program of the Halifax Public Gardens, a place she loved dearly. Dorothy was a lady of the highest order - her daughter often teased her by calling her the Queen. She will be deeply missed by many. www.beechwoodottawa.ca

GUILLIAMS, Patricia Uldene "Pat" - 85, of Perryville, Missouri, passed away Saturday, December 11, 2021, in Perryville. She was born March 18, 1936, in Pictou, Nova Scotia, Canada, to Michael R. and Matilda (nee Dadeau) MacDonald. Pat attended Pictou Academy and after she finished school, she moved to Goose Bay, Labrador, Canada to work on a military base where she met her husband, Jerry. They were married on April 22, 1957, at the Stella Maris Catholic Church in Pictou, Nova Scotia. After retiring from the Teamsters Union in 1994, Pat and Jerry spent their summers in Pat's childhood hometown of Pictou, Nova Scotia, where they reconnected and made many friends over those 25 years. Devoted to her family, she was always involved and supportive in the lives of her children, grandchildren, and great-grandchildren. She was steadfast in her faith and always proud of her Canadian heritage and family. She was a member of St. Vincent DePaul Catholic Church in Perryville, and did volunteer work for the St. Vincent DePaul Society, Holy Name Society, Jail Ministry and Ladies Sodality. Loving survivors include four sons, Joe (Rhonda) Guilliams of Perryville, Jerry (Patty) Guilliams Jr. of Roatan, Honduras, Kerry (Nuss) Guilliams of Lake St. Louis, Missouri and Doug (Jennifer) Guilliams of Waterloo, Ontario; nine grandchildren, Kelli, Joe, and Tim Guilliams, Anthony (Kylie) Guilliams, Samantha (Blake) Edler, Zachary (Amanda) Guilliams, Garrett, Adam, and Ilonka Guilliams; and five great-grandchildren, Anna, Weston, Barrett, Jackson, and Matty; a brother, Dan (the late Nancy) MacDonald of Halifax, Nova Scotia; sisters-in-law, Ruth (the late Walt) Guilliams of Jackson, Missouri, Mackie (the late Don) Harper of Bloomfield, Missouri, Charlene (the late Barney) Guilliams of Pearland, Texas, Fran (the late Jackie) MacDonald of Egerton, Nova Scotia and Una (the late Allan) MacDonald of St. Catharines, Ontario, many loving nieces, nephews, great-nieces, great-nephews, and friends she dearly loved. She was preceded in death by her husband of 64 years, Jerry Guilliams; six brothers: Joe (Carmel) MacDonald, Angus (Grace) MacDonald, Allan MacDonald, Bernie (Charlotte) MacDonald, Jackie MacDonald, Michael MacDonald; two sisters, Mary (Milton) Porter and Elizabeth MacDonald; and her parents, Michael R. and Matilda (Dadeau) MacDonald of Church Street, Pictou, Nova Scotia. Visitation was held from 4 to 8 p.m., Thursday, December 16, 2021, at St. Vincent DePaul Catholic Church, 1010 Rosati Court, Perryville, MO 63775. Recitation of the Rosary was held at 7:30 p.m. Funeral Mass was held at 10 a.m., Friday, December 17, 2021, at the church, with Father Joe Geders C.M. officiating. Interment followed at Mount Hope Cemetery in Perryville, Missouri. In lieu of flowers, the family appreciates memorial contributions to St. Vincent DePaul Catholic Church in Perryville, Missouri or Stella Maris Church in Pictou, Nova Scotia. Arrangements were entrusted to McCombs Funeral Home and Cremation Center in Jackson, Missouri. Online condolences may be sent to the family by clicking on the tribute wall tab of Pat's personal obituary page at mcombsfuneralhome.com

www.pictouadvocate.com
At the touch of a button enter our world...
NEWS • SPORTS • PHOTOS

CLYDESDALE RIDGE WIND PROJECT INFORMATION SESSION

RMS Energy and Natural Forces, partners for the proposed Clydesdale Ridge Wind Project, invite you to attend the upcoming public information session for the Project. Staff will be present at the event to provide Project information and answer questions.

The proposed Project is located on the border between Colchester County and Pictou County in the Berichan area. Initial plans are for the Project to consist of up to 18 wind turbines. The Project Partners intend to bid the Clydesdale Ridge Wind Project into the upcoming provincial Green Choice Program Request for Proposals.

The Project Partners are also seeking interest for the formation of a Community Liaison Committee (CLC) for the Project. Those interested in volunteering as part of the CLC are encouraged to reach out at the contact information below.



Thursday March 21, 2024, 4-7 pm
Kempton Community Centre
59 Loop Old Hwy 4
Kempton, NS B6L 2M4

For more information about the Project, or the information session, please visit the project website or contact Meg Morris, Project Manager at (902) 483-9592 or community@naturalforces.ca.

CLYDESDALERIDGEWINDPROJECT.CA



To be grey or not to be grey

A LITTLE LAUGHTER



COLLEEN LANDRY

philandry@nbnet.nb.ca
@SaltWireNetwork

I'm almost 60 and, God help me, I'm at that crucial juncture in life where I find myself asking deep, philosophical questions that keep me awake at night: to be (grey) or not to be (grey). That is the question.

I'm doing my level best to keep from looking like Betty White's great-grandmother, but it's an uphill battle. I can play connect-the-dots with the age spots on my face; I shudder when the flab on my triceps keeps waving long after the rest of my arm has stopped; and my beard is getting more unruly by the minute. But the one thing I can still control is the colour of my hair. All it takes is my hard-earned money and some of the best hours of my life sitting in a hair salon.

Hair is yet another reason men have it better than

women. Take my husband, for example. He's grey and I don't even think he's noticed. Like most men, he couldn't care less and, ironically, he looks better with grey hair. How is that fair? I know I should take cues from him and just embrace my silver locks but I'm not ready. I caught a glimpse of what I'd look like with grey hair when salons closed during COVID. Put it this way — I was more terrified of never getting my roots done again than I was of the virus.

I know. I know. I would save so much money if I'd let my hair run its natural course. My husband's monthly haircuts cost a whopping 20 bucks. He'd have a stroke if he knew how much I spent. I have an elaborate payment system to ensure he never finds out — envelopes in which I squirrel away cash, a Swiss bank account and an auctioneer who sells my superfluous organs. You do not need a spleen.

The time I would save by not sitting in a salon would allow me to reach my goals and dreams. Don't care.



While some accept going grey with grace, columnist Colleen Landry loves the feeling when she leaves the hair salon. **PEXELS • COTTONBRO STUDIO**

Hubby's haircuts take all of 15 minutes. He's back before I can get through an episode of Ted Lasso. Is it a drive-thru barbershop? Seriously, though — when I have a hair appointment for a cut, root touch-up, highlights and a blowout, I'm gone for days. I pack an overnight bag filled with board games, s'mores and friendship bracelets. We have a time. My husband often forgets where I've gone and has been known to put out an Amber Alert on me. Like I want to be found.

Hand to God, the man doesn't know his hairdresser's

name. Imagine. I swear he'd let anyone with a pair of scissors cut his hair. I know absolutely everything about Isabelle because obviously she's more important than my doctor. I know her blood type; I have a tattoo of her face on my forearm; and she's my emergency contact. I trust her with my hair and therefore my life. She's the most important relationship I have — her magical hands are the only thing keeping me from being confused with Betty White's great-grandmother.

Look, I don't judge others

my age for going grey. In fact, I applaud them. Many women look fabulous with a silver mane, but perhaps they don't contend with the age spots, facial hair and hooded lids that I've been trying to divert the eye from.

Furthermore, I feel like a million bucks when I leave the salon (probably because I just spent as much). Like the L'Oréal hair colour commercials of old in which the model proclaims, "I'm worth it", I too am worth it, darn it. So, I guess the answer to my deep philosophical question is ... Not to be! Now, if I can just get some traction on the GoFundMe I started to help with my upcoming face lift, I'll be all set. Please donate generously.

Colleen Landry is a high school writing teacher, author of humour book *Miss Nackawic Meets Middle* and co-author of the *Camelia Airheart* children's adventure series. She and her husband are empty nesters in Moncton, N.B. Their two grown sons have ditched them for wider horizons. She is filling the void with Netflix, dark chocolate and Cabernet Sauvignon.

Antigonish Heritage Museum calling all Lego builders

CONTRIBUTED


The Antigonish Heritage Museum is inviting Lego builders of all ages to get busy. The museum is holding its second annual Lego built heritage contest, following a hugely successful first year in 2023. "We were absolutely overwhelmed by the entries for last year's contest," says museum curator Barry Mac-

Kenzie. "People of all ages participated, which is exactly what we wanted to see. Some entries were so detailed that they looked like they'd been made with a kit, and others were really cool interpretations of the buildings, demonstrating the creativity and personalities of the builders." Participants are encouraged to build models of any buildings in the town or county of

Antigonish that date to before 1920, MacKenzie noted. "Last year, we received a lot of models of registered heritage properties in town, like the courthouse, but we also want people to be encouraged to design models of even their own heritage home." The contest is sponsored by the Heritage Association of Antigonish, the Heritage Trust of Nova Scotia and

Antigonish 5 to \$1. Prizes for the winning entries in both the youth (12 and under) and adult (13 and up) categories will include cash, Lego and more. The deadline for entries is Friday, March 8. The models will be on display during March break and the winners will be announced during a special open house on Friday, March 15, which will feature

activities and food, all with a Lego theme. The Antigonish Heritage Museum was founded in 1991 to protect and promote the heritage of the peoples and places of Antigonish. A vibrant cultural hub, it hosts activities, events and programs year-round. For more information, visit www.antigonishheritage.ca or call 902-863-6160.



TOWN OF AMHERST
Call for Citizen Appointments to Committees of Council

The Town of Amherst is looking for interested citizens to fill appointments on the following Committees:

- Accessibility Advisory Committee:** Assists Council in fulfilling its responsibilities relating to identifying, preventing and eliminating barriers to people with disabilities in municipal programs, services, initiatives and facilities.
- Poverty Reduction Advisory Committee:** Assists Council with matters regarding poverty reduction, including increasing wellness and quality of life for all constituents living in the Town of Amherst focusing on what is needed to prevent people from experiencing poverty.
- Amherst Board of Police Commissioners:** Acts as a liaison between the Amherst Police Department and Amherst Town Council.
- North Tyndal Wellfield Advisory Committee:** Advises Council on policy issues to do with the protection of the groundwater quality.
- Planning Advisory Committee:** Advises Council with respect to land use planning matters, and also acts as the Dangerous and Unhealthy Committee and Heritage Advisory Committee.

The Terms of Reference for these Committees are available on the Town of Amherst website at www.amherst.ca

To be a candidate for appointment, a person must demonstrate all of the following qualifications to the satisfaction of Council:

- Possess a knowledge of related-community issues;
- Be of good character;
- Possess the skills and abilities to make the commitment of time and effort required to carry out Committee responsibilities; and
- Consent to criminal record and background checks.

Please provide a written letter of your background and interests to Natalie LeBlanc, Municipal Clerk, PO Box 516, 98 East Victoria Street, Amherst, NS B4H 4A1 or by email to nleblanc@amherst.ca


All applications must be received by Tuesday, March 12, 2024 at 4:30 PM.

CLYDESDALE RIDGE WIND PROJECT INFORMATION SESSION


RMS Energy and Natural Forces, partners for the proposed Clydesdale Ridge Wind Project, invite you to attend the upcoming public information session for the Project. Staff will be present at the event to provide Project information and answer questions.

The proposed Project is located on the border between Colchester County and Pictou County in the Berichan area. Initial plans are for the Project to consist of up to 18 wind turbines. The Project Partners intend to bid the Clydesdale Ridge Wind Project into the upcoming provincial Green Choice Program Request for Proposals.

The Project Partners are also seeking interest for the formation of a Community Liaison Committee (CLC) for the Project. Those interested in volunteering as part of the CLC are encouraged to reach out at the contact information below.



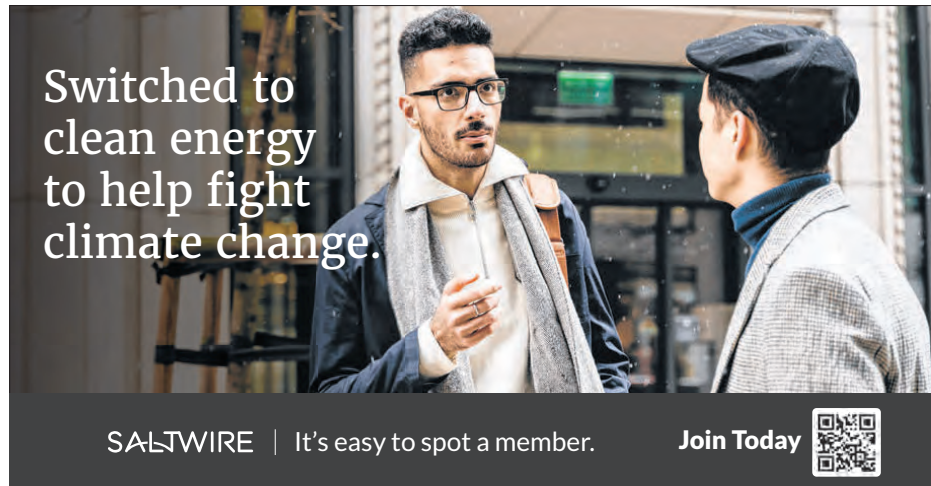
Thursday March 21, 2024,
4-7 pm
Kempton Community Centre
59 Loop Old Hwy 4
Kempton, NS B6L 2M4



For more information about the Project, or the information session, please visit the project website or contact Meg Morris, Project Manager at (902) 483-9592 or community@naturalforces.ca.


CLYDESDALERIDGEWINDPROJECT.CA

Switched to clean energy to help fight climate change.



SALTWIRE | It's easy to spot a member.

Join Today



Enjoy the many flavours of Spanish cuisine

DISH IT OUT



MARK DEWOLF

mark.dewolf@saltwire.com
@drink_east

Spanish cuisine is a testament to the joy found in simple and authentic flavours. Broadly speaking, its culinary tradition is one that celebrates the natural flavours of its ingredients without the need for elaborate preparation. At the heart of Spanish cooking is a deep respect for seasonal produce, fresh seafood and simply prepared meats, which get featured according to where you are in the country. Fresh seafood and shellfish reign supreme in provinces in the north, butressed against the Bay of Biscay or staring straight into the Atlantic, as is the case with Galicia on its West Coast. As you move south through the high elevations and remote plains of Rioja and Castilla y Leon, vegetables, local lamb and pork become more prominent. Eventually, you land in the South, where a melting pot of flavours, highlighted by its historic connections to the Middle East, plays a vital role. Everywhere, the dishes are enhanced by the country's rich variety of olive oils, spices and herbs. This approach to cooking creates dishes that are both humble and profound, embodying a sense of place and tradition. From the sun-drenched terraces of Andalusia to the bustling tapas bars of Barcelona and Madrid to the revered flavours of San Sebastián in the north, Spanish cuisine offers an authentic taste experience where the simplest ingredients are transformed into dishes that reso-



Ajo Blanco soup, sometimes referred to as white Gazpacho, is an Andalusian favourite. 123RF

nate with history and flavour.

GARLICKY BREAD AND ALMOND SOUP (AJO BLANCO)

4 to 6 Servings

- 1 cup blanched almonds
- 1 large French country loaf, crust removed, cut into cubes
- 3 cloves garlic, roasted
- 3 cups water
- 2 tsp sherry vinegar
- 2 tsp olive oil
- Salt to taste
- Green olives, pitted, for garnish (or green grapes)

Directions: Place almonds, bread, water and roasted garlic to a blender. Blend until smooth. Add vinegar and oil. Blend again. Season with salt to taste. Chill overnight. Serve cold. Garnish with green olives or green grapes.

GARLIC SHRIMP (GAMBAS AL AJILLO)

4 to 6 Servings

- 1 1/2 tbsp olive oil
- 4 cloves garlic, minced
- 1 tsp chili flakes

- 1 bay leaf
- 1 lb medium count shrimp, peeled, deveined

Directions: Add olive oil to pan and set over medium heat. Add garlic, chilies and bay leaf. Sauté until fragrant (30 seconds). Raise heat to medium-high. Add shrimp and cook until pink (two to three minutes). Remove bay leaf. Finish with parsley.

BRAISED LAMB RIB CHOPS WITH ROMESCO SAUCE (CONDERO ESTOFADO CON SALSA ROMESCO)

4 to 6 Servings

Sauce Ingredients

- 2 red peppers
- 2 bulbs garlic, outer skin removed, sliced across top (barely revealing cloves)
- 1 lb plum tomatoes, halved
- 3 sprigs thyme, leaves removed
- 2 tsp chili flakes
- 1/2 cup almonds, toasted
- 1/4 cup bread, cubed
- 2 tbsp sherry vinegar
- 2 tbsp + 1/3 cup olive oil

Lamb Ingredients

- 1 1/2 tbsp olive oil
- 3 lb lamb rib chops
- 2 cups red wine
- 2 sprigs thyme, leaves removed
- 4 cloves garlic, minced

Directions: Place lamb in a container. Add wine, thyme and garlic. Seal and refrigerate overnight.

Preheat oven to 400 F. Place peppers, garlic, tomatoes on a sheet pan. Drizzle with 2 tbsp olive oil. Roast for 40 minutes. Remove from oven and let garlic cool. Place peppers in a bowl and cover with a towel or cling wrap to steam and help remove the skin. Once cool, remove skin, stem and seeds from peppers. Squeeze out garlic from bulbs. Place tomatoes, peppers and garlic in a blender along with thyme, chili flakes, almonds, bread, vinegar and olive oil. Blend until smooth. Season with salt and pepper.

Remove lamb from marinade. Season with salt and pepper. Place a large cast iron pan over medium-high

heat. Add olive oil. When oil is warm, add lamb (work in batches). Sear until browned on all sides. Remove and set aside. Once all lamb is cooked, return to pan, along with romesco sauce. Reduce heat to medium-low and simmer for 20 minutes.

SPANISH STYLE FRENCH TOAST (TORRIJAS CON DULCE DE LECHE)

4 to 6 Servings

- 1 can sweetened condensed milk, label removed
- 1 baguette, cut on bias into 1-inch thick slices (24 slices)
- 4 eggs
- 1 1/2 cups milk
- 1 tsp vanilla
- Pinch cinnamon
- 1-2 tsp vegetable oil
- Powdered sugar for garnish

Directions: Place can of sweetened condensed milk in a large pot of a water (the water should be at least two inches over the can). Bring to a boil, then reduce to simmer. Simmer for two hours. Using tongs, gently remove can from water and set aside to cool completely. When cool, remove lid from can to reveal dulce de leche/caramel sauce inside. Meanwhile, place eggs in bowl and whisk. Combine milk, vanilla and cinnamon in a pot and warm. Dip slices of bread in warm milk, then egg mixture. Set pan over medium heat. Add a tablespoon of oil. Fry bread until golden brown on each side. Use more vegetable oil as necessary. Serve warm. Add a dollop of dulce de leche to slices of bread. Sprinkle with powdered sugar.

Mark DeWolf, @drink_east, is a nationally recognized sommelier, creative director of Food & Drink at SaltWire Network, and leads food and wine tours to destinations around the world.

food insecurity
food insecurity
food insecurity
food insecurity
food insecurity
food insecurity
food insecurity
food insecurity
food insecurity

Our elected officials can make it go away.

Let them know thousands of Nova Scotians are waiting.

feed
nova scotia

DAVE RITCEY
MLA
Truro • Bible Hill
Millbrook • Salmon River
902-897-0884
mlaritcey@bellaliant.com

CLYDESDALE RIDGE WIND PROJECT INFORMATION SESSION

RMS Energy and Natural Forces, partners for the proposed Clydesdale Ridge Wind Project, invite you to attend the upcoming public information session for the Project. Staff will be present at the event to provide Project information and answer questions.

The proposed Project is located on the border between Colchester County and Pictou County in the Berichan area. Initial plans are for the Project to consist of up to 18 wind turbines. The Project Partners intend to bid the Clydesdale Ridge Wind Project into the upcoming provincial Green Choice Program Request for Proposals.

The Project Partners are also seeking interest for the formation of a Community Liaison Committee (CLC) for the Project. Those interested in volunteering as part of the CLC are encouraged to reach out at the contact information below.



Thursday March 21, 2024,
4-7 pm
Kempton Community Centre
59 Loop Old Hwy 4
Kempton, NS B6L 2M4

For more information about the Project, or the information session, please visit the project website or contact Meg Morris, Project Manager at (902) 483-9592 or community@naturalforces.ca.

CLYDESDALERIDGEWINDPROJECT.CA





Serving a world in motion
 Au service d'un
 monde en mouvement
 navcanada.ca

January 3, 2024

Your file
 Clydesdale Ridge Wind Project - 180 Gunshot Rd
 Our file
 23-3235

Mrs. Jessica Pitman
 Natural Forces Developments LP
 1200-1701 Hollis Street
 Halifax, NS
 B3J 3N4

**RE: Wind Structures: Wind Turbine(s) - Dalhousie Settlement, NS
 (See attached document(s))**

Mrs. Pitman,

NAV CANADA has evaluated the captioned proposal and has no objection to the project as submitted, provided that the following is adhered to:

- In the interest of aviation safety, it is incumbent on NAV CANADA to maintain up-to-date aeronautical publications and issue NOTAM as required. To assist us in that end, we ask that you notify us at least 90 business days prior to the start of construction. This notification requirement can be satisfactorily met by returning a completed, signed copy of the attached form and an Excel copy of the attached spreadsheet by email at landuse@navcanada.ca or fax at 613-248-4094. If you should decide not to proceed with this project or if the structure is dismantled, please advise us accordingly so that we may formally close the file.

Here are the impacts that were identified by our assessment:

- Instrument Flight Procedures: CZQM Airspace
 - Area Minimum Altitude (AMA): NW (N46 W64) SW (N44 W64) NE (N46 W60) SE (N44 W60)
 - AMA to be raised from 2,600 feet to 2,700 feet.
 - This impact would be removed if all turbines were under 1,600 feet ASL.
- All turbines are visible on the HALIFAX Radar. Any changes to this proposal would need to be re-assessed for possible impact.

The nature and magnitude of electronic interference to NAV CANADA ground-based navigation aids, including RADAR, due to wind turbines depends on the location, configuration, number, and size of turbines; all turbines must be considered together for analysis. The interference of wind turbines to certain navigation aids is cumulative and while initial turbines may be approved, continued development may not always be possible.

Our assessment does not constitute an approval and/or permit from other agencies. If you have any questions, contact the Land Use Department by email at landuse@navcanada.ca.

NAV CANADA's land use evaluation is based on information known as of the date of this letter and is valid for a period of 18 months, subject to any legislative changes impacting land use submissions. Our assessment is limited to the impact of the proposed physical structure on the air navigation system and installations; it neither constitutes nor replaces any approvals or permits required by Transport Canada, other Federal Government departments, Provincial or Municipal land use authorities or any other agency from which approval is required. Innovation, Science and Economic Development Canada addresses any spectrum management issues that may arise from your proposal and consults with NAV CANADA engineering as deemed necessary.

This document contains information proprietary to NAV CANADA. Any disclosure or use of this information or any reproduction of this document for other than the specific purpose for which it is intended is expressly prohibited except as NAV CANADA may otherwise agree in writing.

Regards,

Land Use Office
 NAV CANADA

cc ATLR - Atlantic Region, Transport Canada



Transport Canada number TC #2023-166
Applicant number

AERONAUTICAL ASSESSMENT FORM for obstacle notice and assessment

Owner (company name) Natural Forces Developments LP		
City Halifax	Province/Territory Nova Scotia	Postal code (A1A 1A1) B3J 3N4
Telephone number (999-999-9999) 902-422-9663	Email Address jpitman@naturalforces.ca	

Applicant (company name) Natural Forces Developments LP		
City Halifax	Province/State Nova Scotia	Postal code (A1A 1A1) B3J 3N4
Telephone number (999-999-9999) 902-422-9663	Email Address jpitman@naturalforces.ca	

Geographic Coordinates NAD83 NAD27 WGS84

N Latitude deg 45 min 36 sec 30.55

W Longitude deg 63 min 05 sec 46.33

For extensive structures submit geographical coordinates separately (e.g. windturbines, transmission lines, building corners).

HEIGHTS	Feet	Metres	Structure alone	Structure with an addition
A Ground Elevation (AMSL)		280		
B Height of an addition to a structure				
C Total structure height including B (AGL)		201		
Overall height (A plus C) (AMSL)		481.0		

Is the location on lands affected by **Airport Zoning Regulations (AZRs)**? Yes No

Where the object is on lands affected by **AZRs**, a legal survey attesting conformance is required.

Nearest Aerodrome Union Centre Airport	Have you contacted the aerodrome? <input type="radio"/> Yes <input checked="" type="radio"/> No
--	--

Description of Project (or attached)
16 large scale wind turbine generators with 120 m hub height and 163 m rotor diameter. Natural Forces is seeking Transport Canada approval of these 16 possible turbine sites.

Notice of <input checked="" type="radio"/> New Structure <input type="radio"/> Change to existing structure	Duration <input type="radio"/> Permanent <input checked="" type="radio"/> Temporary
--	--

Proposed Construction Date: From (yyyy-mm-dd): **2024-09-01** To (yyyy-mm-dd): **2054-09-01**

Applicant Name Jessica Pitman	Telephone (999-999-9999) 902-422-9663	Date (yyyy-mm-dd) 2023-08-08
---	---	--

TRANSPORT CANADA ASSESSMENT (Transport Canada use only)

Marking and lighting required (as per Standard 621)

Night Protection Day Protection Temporary Lighting No protection required

ATS-23-24-00020434, #19694571 (See excel)

Completion of this form does not constitute authorization for construction nor replace other approvals or permits.

Transport Canada Civil Aviation Inspector Name Cheryl Bugden	Date (yyyy-mm-dd) 2023-08-30
--	--

Note 1: This assessment expires 18 months from the date of assessment unless extended, revised, or terminated by the issuing office.
Note 2: If there is a change to the intended installation, a new submittal is required.

INSTRUCTIONS FOR COMPLETING FORM

Submittal: An Aeronautical Assessment Form (AAF) is submitted. If requested by Transport Canada or if there is intent for installation of the following types of construction or alteration, including any appurtenance of more than 12m in height:

- (a) of an overall height that exceeds 90 m AGL at the site;
- (b) of a height that exceeds an airport OIS (obstacle identification surface) or OLS (obstacle limitation surface) as specified in *Aerodrome Standards and Recommended Practices - TP312*;
- (c) for aerodromes (including airports), of a height that exceeds an imaginary surface extending outward and upward at a slope of 2%, from the nearest point of the nearest runway for a horizontal distance of 4500 m and thereafter exceeds a 90m height out to 6km;
- (d) for water aerodromes, as (c) except a slope of 4% with the start of the imaginary surface taken as the GPS location published in the Canada Water Aerodromes Supplement (CWAS);
- (e) for a heliport, of a height that exceeds an imaginary surface extending outward and upward at a slope of 4%, from the nearest point of the nearest landing and takeoff area, for a horizontal distance of 2250 m and thereafter exceeds a 90 m height out to 6 km;
- (f) for catenaries and similar crossings (e.g. bridges), of a height such that any portion of the object exceeds 60 m AGL above the crossed river or valley bottom; or
- (g) on lands affected by an Airport Zoning Regulation (AZR) a legal land survey is required with the submittal proving conformance to the AZR.

Completed applications are to be forwarded to the applicable Transport Canada Regional office listed in Standard 621, Appendix A.

Nav Canada: A separate submittal is made to NAV CANADA. Refer NAV CANADA Land Use Program website <http://www.navcanada.ca/EN/products-and-services/Pages/land-use-program.aspx>

Note: Transport Canada and NAV CANADA Land Use are notified, if the proposed construction does not take place.

Geographic Coordinates: Provide GPS coordinates [in degrees, minutes and seconds] of the object. For extensive objects (e.g. windfarms), provide a separate listing of GPS coordinates for each element of the object (e.g. each windturbine). For buildings, provide coordinates for each corner, and coordinates of the dominant structure on the roof.

Heights: Provide height of the ground elevation Above Mean Sea Level (AMSL), the total structure height Above Ground Level (AGL) and the combined overall height AMSL. For extensive obstacles composed of several objects, provide a separate listing of heights corresponding to GPS coordinates.

Description of Project:

- (a) Indicate the type of structure. (e.g. antenna, crane, building, power line, landfill, water tank, wind farm, moored balloon, kite, catenary/cable crossing, etc.)
- (b) For catenaries [e.g. electrical power transmission line crossings], include a drawing of the configuration of the wires and the supporting structures with their heights. Indicate the placement of marking/lighting [if used] on the wires.
- (c) For existing structures, explain the reason for notifying Transport Canada (e.g. corrections, request for new assessment, etc.).
- (d) If the object is on lands affected by Airport Zoning Regulations (AZRs), provide a legal land survey indicating conformance to AZR surfaces.
- (e) For a wind farm, include a spreadsheet with individual turbine identification numbers [ID], geographic coordinates [in minutes, degrees and seconds], ground elevation AMSL and the overall height of the object AGL. Identify those windturbines which will have lighting.
- (f) Indicate what obstacle marking, lighting and monitoring will be applied. It is the responsibility of the owner to apply the appropriate lighting/marketing/monitoring in accordance with Standard 621.

Nearest Aerodrome: Identify the nearest aerodrome. Certified / registered land aerodromes/heliports are contained in the Canada Flight Supplement (CFS) and certified / registered water aerodromes in the Canada Water Aerodrome Supplement (CWAS); both available directly from NAV CANADA.

This form does not constitute authority for construction. Nor does this form replace any approvals, permits or assessments required by NAV CANADA, Industry Canada, other Federal Government departments, Provincial or Municipal landuse authorities or any other agency from which approval/assessment is required.



1 Canadian Air Division HQ
PO BOX 17000 STN Forces
Winnipeg, MB R3J 3Y5

Date of Electronic Signature

Mrs. Jessica Pitman
Natural Forces
1801 Holis Street, Suite 1205
Halifax, NS, B3J 3N4

LETTER OF NON-OBJECTION FOR NATURAL FORCES

Dear Mrs. Pitman,

Thank you for your patience on this matter and for considering DND radar, airport facilities, and radio-communication systems in your project development process. We have completed the detailed analysis of your proposed site, referenced in NAVCAN Land Use file# 23-3235 the Clydesdale Range wind project near Earltown, NS. The results of the detailed analysis and subsequent technical and operational impact assessments have confirmed there is likely to be minimal or no interference with DND radar, flight operations, and radio-communication systems. Therefore, as a result of these findings we have no objections with your project as submitted. If however, the layout were to change/move, please re-submit that proposal for another assessment.

The concurrence for this site is valid for 24 months from date of this correspondence. If the project should be cancelled or delayed during this timeframe please advise the point of contact. It should be noted that each submission is assessed on a case by case basis and as such, concurrence on this submission in no way constitutes a concurrence for similar projects in the same area, nor does it indicate that similar concurrence might be offered in another region. The issuance of this Letter of Non-Objection shall not constitute a waiver or alienation of any existing or future legal rights of the DND/CAF nor shall it be construed to create any exemptions, indemnification, approvals, rights, acceptances in favour of Natural Forces.

DND/CAF expressly reserves its rights to take legal action or seek remedy for any and all liability, loss, harm, degradation of services or equipment, litigation costs, damages, judgements or expenses that arise from the adverse effects, whether incidental, indirect or causal, of the referenced NAVCAN Land Use file# 23-3235 the Clydesdale Range wind energy project near Earltown, NS upon the DND/CAF radars, equipment and its provision of Air Traffic Services.

At present DND is working with Transport Canada to make obstruction lighting compliance with Night Vision Goggles (NVG) mandatory. At present DND cannot stipulate that proponents of wind turbine farms utilize NVG compliant lighting. However, as you can imagine, the safety of our aircrews is a top priority, and as such, we ask that you consider lighting your turbines with NVG compliant lighting so that they are visible to pilots during NVG operations.

I trust that you will find this satisfactory. If you have any technical questions or concerns regarding any aspect of this investigation, please contact the undersigned.

Kind regards.

D.J. McKillop
Lieutenant-Colonel
Senior Staff Officer Aerospace
Capabilities and Readiness



August 10, 2023

Jessica Pitman
Natural Forces

Subject: Clydesdale Ridge Wind Farm Project – Updated Preliminary Analysis of Impacts on ECCC Radars (Gore Radar)

Dear Ms. Pitman,

Thank you for contacting the Meteorological Service of Canada, a branch of Environment and Climate Change Canada (ECCC), regarding your wind energy intentions.

When assessing the potential impact of all new wind farm projects, ECCC's main goal is to avoid significant interference that would hinder the timely and accurate production of watches and warnings of significant weather.

We have reviewed the information you have provided to us via email on August 8, 2023, for the proposed Clydesdale Ridge Wind Farm Project (located 72 km away from ECCC's Gore Radar - Gore, NS). Our preliminary assessment of the proposed project indicates that any potential interference that may be created, should not be severe for our radar operations. Consequently, we do not have objections to the current proposal.

If your plans are modified in any manner (e.g. number of turbines, height, placement or materials) this analysis would no longer be valid and an updated analysis must be conducted. Please contact us at: radarsmeteo-weatheradars@ec.gc.ca

Thank you for your ongoing cooperation and we wish you success with your wind energy project.

Sincerely,

Hoppa Lau on behalf of David Bradley

A-Directeur, Surveillance atmosphérique et services de données
Service Météorologique du Canada, Environnement et Changement Climatique Canada
Director-I, Atmospheric Monitoring and Data Services
Meteorological Service of Canada, Environment and Climate Change Canada



Protected A

Jessica Pitman
Natural Forces

GV 1620-7-3

August 10, 2023

SUBJECT: Clydesdale Ridge Wind Project

Ref. # 2023-08-08_0078

Greetings,

Reference is made to your email request dated August 8th, 2023, on your plans for the wind energy project called “Clydesdale Ridge” in the province of Nova Scotia.

According to the Radio Advisory Board of Canada (RABC) and Canadian Wind Energy Association (CanWea), the radius of the consultation zone for fixed Land Mobile Radio (LMR) sites is 1 km. The RCMP currently have no “owned” radio towers or Point-To-Point (PTP) microwave links in this area.

However, the **surrounding area is receiving radio coverage from TMR2** operated as a leased system through Bell Canada. We do recommend that you request coordination with Bell who are acting on behalf of RCMP in the province of Nova Scotia with leased towers.

Should you require additional information, please direct any questions or concerns to the undersigned.

Sincerely,

Phil Tanguay

Wind Farm Coordinator, National Radio Services
Royal Canadian Mounted Police (RCMP) / Government of Canada
windfarm_coordinator@rcmp-grc.gc.ca / Tel: 343-552-1290

Coordonnateur parc éolien, Services de radio nationaux
Gendarmerie royale du Canada (GRC) / Gouvernement du Canada
windfarm_coordinator@rcmp-grc.gc.ca / Tél: 343-552-1290

From: [Grégoire, Martin](#)
To: [Jessica Pitman](#)
Subject: RE: Clydesdale Ridge Wind Project (16Ta Layout) - Aug 2023
Date: August 9, 2023 12:21:51 PM
Attachments: [image001.jpg](#)

[EXTERNAL]

Hello,

There is no CCG communication or radar site in the vicinity of the proposed wind farm (Clydesdale Ridge). Therefore no interference issues are anticipated.

Regards / Salutations,

Martin Grégoire

Canadian Coast Guard
Garde côtière canadienne

From: Jessica Pitman <jpitman@naturalforces.ca>
Sent: Tuesday, 8 August, 2023 4:01 PM
To: CCG Wind Farm Coordinator / Coordinateur Parc Éolien GCC (DFO/MPO)
<DFO.CCGWindFarmCoordinator-CoordinateurParcEolienGCC.MPO@dfo-mpo.gc.ca>
Subject: Clydesdale Ridge Wind Project (16Ta Layout) - Aug 2023

You don't often get email from jpitman@naturalforces.ca. [Learn why this is important](#)

Hello,

Please find attached a KMZ with the turbine locations for the Clydesdale Wind Project. Also attached is an Excel document with the turbine specifications and the UTM coordinates.

Please advise if the CCG has any objections to this project or if any additional information is required.

Thank you,

Jessica Pitman (she/her) | Project Developer



1801 Hollis Street | Suite 1205 | Halifax, NS | B3J 3N4
t: +1 902 422-9663 | m: +1 902 719 6540
www.naturalforces.ca

Wind energy company plans second county turbine project

Posted on January 11, 2012 Steve Goodwin



Bill Scott, left, of Mount Thom and John Mackenzie of Scotsburn compare their knowledge of western Pictou County while viewing maps for a second wind farm being proposed for the area. (Goodwin photo)

RMSEnergy's first big project, the Dalhousie Mountain Wind Farm, became the third largest wind farm in the province when it opened in 2009. Its 34 turbines produce 51 megawatts, which translates into 175,000 gigawatt hours of renewable energy, enough to power 20,000 homes. That's enough to provide heat, light and hot water to all the homes in Pictou County, RMSEnergy president Reuben Burge said.

A local wind power company is poised to launch its second project in western Pictou County. Dalhousie Mountain Wind Farm Inc. shared a proposal to erect 30 towers near the Gully Lake wilderness protection area along the Colchester County line during an information session recently in Mount Thom.

The company has named the project Clydesdale Ridge Farm, the name of a road that accesses Gully Lake from Colchester County. It has mapped out 41 locations to account for tower sites that might be eliminated for residential or environmental reasons, energy research consultant Lisa Fulton says.

"We have more locations for the 30 towers we want to put up in case we have to move some of the towers once we get the studies back," she said.

Tweet

Share

Interactive Content

- Crosswords
- Exercise
- Games
- Movies
- News
- Recipes
- Sports
- Enterte
- Flights
- Horosc
- Music
- Quotes
- Safety
- Sudoku

COLDWELL BANKER
M.B. GREEN REALTY
752-

Bargain Hunter
www.bargainhunterpress.com

The company has a 25-year agreement to provide electricity to the province's power grid. Because proximity to the grid is essential for wind farms, the project is designed to connect with a transformer where power lines cross Highway 104.

Work at Clydesdale Ridge will include installing a meteorological tower to monitor wind tendencies. Monitors, biologists, botanists and birders will be brought in to study the area.

"We'll examine environmental sensitivities for people, wildlife and rare plants," Fulton said. Startech Consulting will conduct the environmental assessment in the area.

Article Comments

You must be logged in to view and leave comments:

Username	<input type="text"/>
Password	<input type="password"/>
<input type="button" value="Log In"/>	

[Forgot your password? Click here!](#) | [Register for free here!](#)



Join Our Social Network



Visit [Advocate Media News Net](#)

[Community Links](#)

Nova Scotia

Province approves wind farm in Pictou county

CBC News · Posted: Jul 25, 2012 3:00 PM ADT | Last Updated: July 26, 2012

Nova Scotia's Environment Minister Sterling Belliveau has approved a plan to build a new wind farm with 28 turbines straddling Pictou and Colchester counties.

The Clydesdale Ridge Wind farm will produce 50 megawatts of electricity, the same amount as the neighbouring Dalhousie Mountain wind farm also owned by Reuben Burge.

The province's environmental approval is conditional upon Reuben Burge providing detailed plans as to where each turbine will be located, as well as any impact on birds, bats, moose and the Canada lynx.

The wind farm must also consult with the Mi'kmaq people before any construction on the multi-million dollar project can start.

The project also still requires approval from the renewable electricity administrator.

[CBC's Journalistic Standards and Practices](#) | [About CBC News](#)

[Corrections and clarifications](#) | [Submit a news tip](#) | [Report error](#) ▼

From: [Colin Forsyth](#)
To: [Jessica Pitman](#)
Subject: RE: Community Engagement - Clydesdale Ridge Wind Project
Date: February 6, 2024 12:58:11 PM
Attachments: [image001.png](#)

[EXTERNAL]

You're right, it's mainly in his district.

However, Michael Gregory doesn't qualify to sit on a CMC, I believe he has a link to a turbine project. Which is why I mentioned Lisa, as she's the next closest.

It's doesn't need to be a meeting, in person or Teams, email is fine. We just want to make sure they're available for the public meeting.

So once I know how to proceed, we'll loop that Councillor into the discussion.

From: Jessica Pitman <jpitman@naturalforces.ca>
Sent: Tuesday, February 6, 2024 12:00 PM
To: Colin Forsyth <CForsyth@colchester.ca>
Cc: Jim Roycroft <jim@rmsenergy.ca>
Subject: RE: Community Engagement - Clydesdale Ridge Wind Project

You don't often get email from jpitman@naturalforces.ca. [Learn why this is important](#)

Thanks Colin,

I believe the majority of our turbines sit in Michael Gregory's district as they are situated in Earltown – I'm not sure if he is also already on a CMC.

For reference on timeline, we are planning to host this event on March 6th so we will need to have these discussions by Feb 14th (3 weeks out) according to the bylaw. Will that include looping in the chosen Councillor to this thread, or should we aim to have a Teams meeting within the next week?

We also plan on sending out event information by the 14th to councillors and surrounding residents, again to abide with the requirements in the bylaw.

Thanks,
Jessica

From: Colin Forsyth <CForsyth@colchester.ca>
Sent: Tuesday, February 6, 2024 10:36 AM

To: Jessica Pitman <jpitman@naturalforces.ca>

Subject: RE: Community Engagement - Clydesdale Ridge Wind Project

[EXTERNAL]

So as part of the public meeting we have to involve the local area Councillor who acts as the Chair of the committee when it's formed.

I believe in this case that would be Lisa Patton, however she's already on a CMC.

We recently changed the Bylaw to allow any Councillor to act as the chair, as we saw this coming.

So I think we need to find out who is going to be the Chair first, I'll ask around to find out how we should proceed in this situation.

From: Jessica Pitman <jpitman@naturalforces.ca>

Sent: Monday, February 5, 2024 11:18 AM

To: Jeramie Lewis <Jeramie.Lewis@munpict.ca>; Colin Forsyth <CForsyth@colchester.ca>

Cc: Jim Roycroft <jim@rmsenergy.ca>

Subject: RE: Community Engagement - Clydesdale Ridge Wind Project

You don't often get email from jpitman@naturalforces.ca. [Learn why this is important](#)

Hi Folks,

We have decided to host this event at the Kemptown Community Centre in Colchester on March 6th. Can you both confirm that this location will meet the requirements of a community meeting for your respective bylaws?

Additionally, [@Colin](#) should we schedule a time to chat about the community meeting, or does this email meet the requirements from your bylaw to discuss the meeting with the Development Officer at least 3 weeks in advance?

Thanks,
Jessica

From: Jessica Pitman

Sent: Monday, January 15, 2024 4:57 PM

To: Jeramie Lewis <Jeramie.Lewis@munpict.ca>; Colin Forsyth <cforsyth@colchester.ca>

Cc: Jim Roycroft <jim@rmsenergy.ca>

Subject: Community Engagement - Clydesdale Ridge Wind Project

Good afternoon Colin and Jeramie,

I wanted to get some clarity on the community engagement piece that both of your municipalities require as part of the development permit process. I've broken them down side-by-side as they have many similarities:

Colchester	Pictou
Meet with Development Officer to discuss the Meeting at least 3 weeks before the event	
Once date/ time are decided, written notice must be given to the Mayor and Councillors including date, time and location as well as an explanation of the project.	
Advertise 1 and 2 weeks before the meeting date in a local paper – both notices must be provided to the Development Officer	Advertise the meeting in the local paper 14 days and 7 days before the meeting. Provide proof to the Development Officer.
Invite everyone within 2km of the project boundaries at least 3 weeks before – the list of invitees must be given to the Development Officer within 2 days of the notices being given.	Invite all landowners within 2km of the project boundary via mail 3 weeks prior. Provide the Development Officer with a complete list of the invited landowners within 2 days of the notices being given.
<i>Possibility of a CMC being created – shall be chaired by the councillor for the area.</i>	

We would ideally like to host a community meeting sometime in March, and I wanted to confirm that as long as all the above-mentioned criteria are met, that a single open house would be sufficient to meet both Municipality's requirements. My main concern would be about "hosting in the community where the project is located" since it would apply to two Municipalities. I'm curious as to what you folks would deem outside of the community on either side of the Municipal line.

Are there any other requirements of this community consultation piece that I'm missing?

Thanks,

Jessica Pitman (she/her) | Project Developer



1701 Hollis Street | Suite 1200 | Halifax, NS | B3J 3M8

t: +1 902 422-9663 | m: +1 902 719-6540

www.naturalforces.ca

From: [Jeramie Lewis](#)
To: [Jessica Pitman](#)
Subject: RE: Meeting Request and Contact Info
Date: August 28, 2023 11:39:12 AM

[EXTERNAL]

Yes , that is the correct address

I will arrange the meeting room here for us.

Regards,

Jeramie P. Lewis, Dipl.T.
Development Officer

Phone: (902) 485-2245

Fax: (902) 485-6475

From: Jessica Pitman <jpitman@naturalforces.ca>
Sent: Monday, August 28, 2023 11:37 AM
To: Jeramie Lewis <Jeramie.Lewis@munpict.ca>
Cc: Logan McDowell <Logan.McDowell@munpict.ca>; Jim Roycroft <jim@rmsenergy.ca>
Subject: RE: Meeting Request and Contact Info

WARNING:

This email originated from a sender outside of your organization.

That's great – I'll send out a meeting invite for 11am tomorrow. I also wanted to confirm that the location of your office is at 46 Municipal Drive, is that correct?

Best,

Jessica Pitman (she/her) | Project Developer



1801 Hollis Street | Suite 1205 | Halifax, NS | B3J 3N4

t: +1 902 422-9663 | m: +1 902 719 6540

www.naturalforces.ca

From: Jeramie Lewis <Jeramie.Lewis@munpict.ca>
Sent: Friday, August 25, 2023 11:41 AM
To: Jessica Pitman <jpitman@naturalforces.ca>

Cc: Logan McDowell <Logan.McDowell@munpict.ca>; Jim Roycroft <jim@rmsenergy.ca>
Subject: RE: Meeting Request and Contact Info

[EXTERNAL]

Jessica

I'm available to meet with you at 11 am on Tuesday August 29th

Regards,

Jeramie P. Lewis, Dipl.T.
Development Officer

Phone: (902) 485-2245

Fax: (902) 485-6475

From: Jessica Pitman <jpitman@naturalforces.ca>
Sent: Friday, August 25, 2023 10:44 AM
To: Jeramie Lewis <Jeramie.Lewis@munpict.ca>
Cc: Logan McDowell <Logan.McDowell@munpict.ca>; Jim Roycroft <jim@rmsenergy.ca>
Subject: RE: Meeting Request and Contact Info

WARNING:
This email originated from a sender outside of your organization.

Hi Jeramie and Logan,

Thank you for reaching out regarding the Clydesdale Ridge Wind Project - I've copied Jim Roycroft from RMS Energy who is our partner for this project. We want to meet and give you folks a little background on this project, as well as discuss some of the permitting requirements that we would need throughout the process.

We are happy to drive up to your municipal office in Pictou and take the meeting from there. Do you have availability on Tuesday next week, preferably after 11am?

Thanks,
Jessica

From: Jeramie Lewis <Jeramie.Lewis@munpict.ca>
Sent: Wednesday, August 23, 2023 2:20 PM
To: Jessica Pitman <jpitman@naturalforces.ca>
Cc: Logan McDowell <Logan.McDowell@munpict.ca>
Subject: Meeting Request and Contact Info



IRONSCALES couldn't recognize this email as this is the first time you received an email from this sender Jeramie.Lewis@munpict.ca

[EXTERNAL]

Jessica,

This email follows our phone conversation with regards to your request for a meeting to discuss a Wind Energy project within Pictou County.

I copied Logan McDowell on this email for you reference.

**Jeramie P. Lewis, Dipl.T.
Development Officer**

Phone: (902) 485-2245

Fax: (902) 485-6475

**Municipality of Pictou County
P.O. Box 910 - 46 Municipal Drive
Pictou, NS
B0K 1H0**

This email and any attached files are confidential and intended solely for the intended recipient(s). If you are not the named recipient you should not read, distribute, copy or alter this email. Any views or opinions expressed in this email are those of the author and do not represent those of the company from which this email is being sent from. Warning: Although precautions have been taken to make sure no viruses are present in this email, the company cannot accept responsibility for any loss or damage that arise from the use of this email or attachments.

This email and any attached files are confidential and intended solely for the intended recipient(s). If you are not the named recipient you should not read, distribute, copy or alter this email. Any views or opinions expressed in this email are those of the author and do not represent those of the company from which this email is being sent from. Warning: Although precautions have been taken to make sure no viruses are present in this email, the company cannot accept responsibility for any loss or damage that arise from the use of this email or attachments.

This email and any attached files are confidential and intended solely for the intended recipient(s). If you are not the named recipient you should not read, distribute, copy or alter this email. Any views or opinions expressed in this email are those of the author and do not represent those of the company from which this email is being sent from. Warning: Although precautions have been taken to make sure

From: [Jeramie Lewis](#)
To: [Jessica Pitman](#)
Subject: RE: Clydesdale Ridge Wind Project - Mail Out
Date: March 20, 2024 9:22:06 AM
Attachments: [image001.png](#)

[EXTERNAL]

Jessica,

Have you or your group extended an invite to the Public information Session tomorrow to District 4 Councilor – Mary Elliot

If not could you please this is Mary Elliot email Mary.Elliott@munpict.ca

Regards,

Jeramie P. Lewis, Dipl.T.
Development Officer

Phone: (902) 485-2245
Fax: (902) 485-6475

From: Jessica Pitman <jpitman@naturalforces.ca>
Sent: Wednesday, March 13, 2024 5:03 PM
To: Jeramie Lewis <Jeramie.Lewis@munpict.ca>
Cc: Jim Roycroft <jim@rmsenergy.ca>
Subject: RE: Clydesdale Ridge Wind Project - Mail Out

WARNING:
This email originated from a sender outside of your organization.

Hi Jeramine,

Here is the copy of our second newspaper ad for our information session next week.

Best,
Jessica

From: Jessica Pitman
Sent: Thursday, March 7, 2024 4:43 PM
To: Jeramie Lewis <Jeramie.Lewis@munpict.ca>
Cc: Jim Roycroft <jim@rmsenergy.ca>
Subject: RE: Clydesdale Ridge Wind Project - Mail Out

Good afternoon Jeramie,

I've have attached a copy of the newspaper ad that we ran in the Casket yesterday, March 6th.

Thanks,
Jessica

From: Jessica Pitman

Sent: Thursday, February 29, 2024 10:01 AM

To: Colin Forsyth <cforsyth@colchester.ca>; Jeramie Lewis <Jeramie.Lewis@munpict.ca>

Cc: Jim Roycroft <jim@rmsenergy.ca>

Subject: Clydesdale Ridge Wind Project - Mail Out

Good morning Colin, Jeramie,

I've attached the Canada Post shipping labels that shows all the areas where we sent out newsletter notices of our public meeting on the 21st.

These were sent out on Tuesday, Feb 27th, so I am sending this proof in accordance with each of your respective bylaws that require proof within 2 days of the notices being sent out.

I've also attached a copy of the Newsletter for your reference. Colin, a copy of the newsletter has been sent out to the Mayor and Councillors to meet section 9.5(a) of your Wind Turbine Development Bylaw. Please let me know if you folks require anything else.

Jessica Pitman (she/her) | Project Developer



1701 Hollis Street | Suite 1200 | Halifax, NS | B3J 3M8

t: +1 902 422-9663 | m: +1 902 719-6540

www.naturalforces.ca

This email and any attached files are confidential and intended solely for the intended recipient(s). If you are not the named recipient you should not read, distribute, copy or alter this email. Any views or opinions expressed in this email are those of the author and do not represent those of the company from which this email is being sent from. Warning: Although precautions have been taken to make sure no viruses are present in this email, the company cannot accept responsibility for any loss or damage that arise from the use of this email or attachments.

From: [Jeramie Lewis](#)
To: [Jessica Pitman](#); [Logan McDowell](#); [Colin Forsyth](#)
Cc: [Jim Roycroft](#)
Subject: RE: Clydesdale Ridge Wind Project - Combined Municipal Meeting
Date: October 11, 2023 8:10:45 AM

[EXTERNAL]

Morning,

I would be happy to meet with you and the Municipality of Colchester. My availability would be either the 16th or the 20th.

Regards,

Jeramie P. Lewis, Dipl.T.
Development Officer

Phone: (902) 485-2245

Fax: (902) 485-6475

From: Jessica Pitman <jpitman@naturalforces.ca>
Sent: Tuesday, October 10, 2023 4:29 PM
To: Jeramie Lewis <Jeramie.Lewis@munpict.ca>; Logan McDowell <Logan.McDowell@munpict.ca>; Colin Forsyth <cforsyth@colchester.ca>
Cc: Jim Roycroft <jim@rmsenergy.ca>
Subject: Clydesdale Ridge Wind Project - Combined Municipal Meeting

WARNING:
This email originated from a sender outside of your organization.

Hello everyone,

I believe we have met you all, but again for context Jim and I are working on the Clydesdale Ridge Wind Project which overlaps the Colchester/ Pictou boundary,. We would like to host a meeting with both Municipalities to discuss the appropriate course of action when it comes to each municipality's setback regulations, as there is some uncertainty as to who's bylaws we follow with residences on the Pictou side of the county line, and turbines on the Colchester side, all within our project area.

We have previously spoken to each Municipality individually, and so we are proposing this meeting to obtain a combined consensus on the best approach for our project.

Jim and I have availability most mornings, so I'm proposing a virtual meeting for some time in the morning of **Friday October 13th**, **Monday October 16th**, or **Friday October 20th**.

Please let me know if any of these days work for you folks, or if there is an alternative date you

would like to propose.

Thanks,

Jessica Pitman (she/her) | Project Developer



1701 Hollis Street | Suite 1200 | Halifax, NS | B3J 3M8

t: +1 902 422-9663 | m: +1 902 719-6540

www.naturalforces.ca

This email and any attached files are confidential and intended solely for the intended recipient(s). If you are not the named recipient you should not read, distribute, copy or alter this email. Any views or opinions expressed in this email are those of the author and do not represent those of the company from which this email is being sent from. Warning: Although precautions have been taken to make sure no viruses are present in this email, the company cannot accept responsibility for any loss or damage that arise from the use of this email or attachments.

Clydesdale Stakeholder List

Stakeholder Type	Title	Jurisdiction	Affiliation/Department/Company/Group	Relevance
Government	MLA	Colchester North	PC	providing info to respond to constituent questions
Government	MLA	Pictou West		providing info to respond to constituent questions
Government	MP	Cumberland-Colchester	Conservative Party	providing info to respond to constituent questions
Government	MP	Central Nova Scotia	Liberal Party	providing info to respond to constituent questions
Landowner	Landowner	Truro	Community member	Community member interested in project
Landowner	Landowner		Community member	Community member interested in project
Landowner	Landowner		Community member	Community member interested in project
Landowner	Landowner	Dartmouth	Community member	Community member interested in project
Landowner	Landowner	Debert	Community member	Community member interested in project
Special Interest Group	Chairperson		Cobequid Eco-Trails Society Gully Lake Wilderness Society	

Government	Mayor	Colchester	Colchester County Council	providing info to respond to constituent questions
Government	Councillor	Colchester	Colchester County Council, District 8	providing info to respond to constituent questions
Government	Councillor	Colchester	Colchester County Council, District 7	providing info to respond to constituent questions
Government	Councillor, Deputy Mayor	Colchester	Colchester County Council, District 3	providing info to respond to constituent questions
Government	Development Officer	Colchester	Colchester County Planning Department	providing info to respond to constituent questions
Government	Councillor	Pictou	Pictou County Council, District 7	providing info to respond to constituent questions
Government	Councillor	Pictou	Pictou County Council, District 4	providing info to respond to constituent questions
Government	Chief Administrative Officer	Pictou	Pictou County Administration	keeping up to date on the project
Government	Development Officer	Pictou	Pictou County Planning Dept	conversations regarding municipal permitting
Landowner	Landowner		Community member	Community member interested in project
Landowner	Landowner		Community member	Community member interested in project

Communication Log

Correspondence Date	Stakeholder type	Affiliation/Department	Method of contact	Items Discussed	Highlights/concerns
March 9, 2011	Gully Lake (Eco-trails) Wilderness Society	Chairperson	Letter	Letter of Support	Stewards of Gully Lake Trails Systems and Wilderness Area (Area borders with portion of Clydesdale)
February 27, 2012	Colchester North Member of Legislative Assembly	Colchester County	In-person meeting	Received Letter of Support	Boundary covers Colchester County side of Clydesdale
March 9, 2012	Valley Kempton Volunteer Fire Department	Colchester County	Letter	Letter of Support	Boundary includes Colchester County side of Clydesdale, as well as one of Affinity's COMFTT projects
June 4, 2012	Department of Natural Resources	Department of Natural Resources	Telephone, file sharing	Lease Application - Glen Road, Mount Thom, Pictou County	Regional Manager, Crown Land Lease (Clydesdale Crown Land Lease (Clydesdale Crown land approval received))
March 23, 2017	SPCA CEO	SPCA	Letter	Letter of Support	
February 24, 2022	Land Owner	Public Citizen	In-person	Amending Agreement was signed on this date	
February 25, 2022	Land Owner	Public Citizen	In-person	Amending Agreement was signed on this date	
February 25, 2022	Land Owner	JD Bezanson Logging AND James Daniel Bezanson	In-person	Amending Agreement was signed on this date	
February 28, 2022	Land Owner	Public Citizen	In-person	Amending Agreement was signed on this date	
March 23, 2022	Land Owner	Public Citizen	In-person	Amending Agreement was signed on this date	
June 23, 2022	Federal Government	Department of Fisheries and Oceans	Meeting	Project introduction, Environmental Assessment survey scope and methodology for fish and fish habitat	
March 31, 2023	Land Owner	Northern Timber	Letter	Letter of Agreement	
June 28, 2023	Provincial Government	NSECC - EA Branch	Meeting	Environmental Assessment/Project introduction: Scope and methods of environmental assessment, Valued Environmental Components, site sensitivities, MEKS, community and rightsholder engagement approach.	
July 25, 2023	Colchester County Municipal Planning Commission	Colchester County	Telephone, in-person Letter, and Email	Discuss Municipal setback and development permit requirements, and timeline with Colchester County	Issuing Body of Wind Turbine Development License
August 29, 2023	Pictou County Planning dept	Pictou County	In-person	Project overview, Permitting application and municipal boundary overlap, bylaw applicability	Waiting for more detailed information as it becomes available, municipality is overhauling development plan process.
September 7, 2023	Provincial Government	NSNRR	Meeting	Project introduction, Environmental Assessment survey scope and methodology, Species at Risk	Follow-up communications confirmed survey methodologies for birds, bats, moose.
October 6, 2023	Provincial Government	NSECC - Protected Areas and Ecosystems	Meeting	Protected Areas / the Gully Lake Wilderness Area.	NF committed to 200m WTG setback from Gully Lake Wilderness Area boundaries.
October 16, 2023	Pictou and Colchester planning depts	Pictou/Colchester	Virtual meeting	Bylaw overlap, agreements between counties, residence in Pictou county	Staff are comfortable they can deal with bylaw overlap internally, with landowner letter.
October 30, 2023	Colchester councillors	Colchester County	Telephone	Colchester recent possible moratorium	Highlighted success of previous projects and landowner/resident comfort level, general wind industry discussion.
November 9, 2023	Colchester Councillor	Colchester County	Telephone	Proposed moratorium on wind development applications; reiterated he cannot vote	
November 10, 2023	Colchester councillors	Colchester County	Telephone	Proposed moratorium on wind development applications; already sure about his vote for next week	
November 10, 2023	Colchester councillors	Colchester County	Telephone	Proposed moratorium on wind development applications; no answer - MM left message	
November 10, 2023	Colchester councillors	Colchester County	Telephone	Proposed moratorium on wind development applications; no answer - MM left message	
November 10, 2023	Colchester councillors	Colchester County	Telephone	Proposed moratorium on wind development applications; why calling because vote hasn't happened	Unsure

November 10, 2023	Colchester councillors	Colchester County	Telephone	Proposed moratorium on wind development applications; no answer - MM left message	
November 10, 2023	Colchester councillors	Colchester County	Telephone	Proposed moratorium on wind development applications; no answer - MM left message	
November 10, 2023	Colchester councillors	Colchester County	Telephone	Proposed moratorium on wind development applications; no answer - MM left message	
November 10, 2023	Colchester councillors	Colchester County	Telephone	Proposed moratorium on wind development applications; no answer - MM left message	
November 16, 2023	Colchester councillors	Colchester County	In-person	Short speech to council on day of decision	Need to get off coal / develop responsibly / think of future generations / opportunity vs pause for MPS
November 17, 2023	Colchester County Municipal Planning Commission	Colchester County	Telephone	Post-decision debrief and general discussion	
November 20, 2023	Community member		Telephone	█ called the community phone line with general questions about the project; he lives close by; MM called back and answered questions about project size, timeline, delivery of components, wilderness area, landowners, etc.	
November 21, 2023	Educational		In-Person	Overview of Clydesdale EIA process and project, and site tour of Dalhousie Mountain windfarm.	Students very interested in the field, many questions about projects and opportunities.
December 6, 2023	Community member	Colchester County	In-Person	Overall project and turbine proximity to lands	Interested in the project and supportive.
December 7, 2023	Community member	Pictou County	In-Person	Intro to project (had not heard of it), windpower in general, status of project	No concerns mentioned
December 7, 2023	Community member	Pictou County	In-Person	Project update, jobs in security	Very supportive, wishes we get the project built
December 12, 2023	Colchester councillors	Colchester County	Telephone	Followup on council decision, respect for opposing viewpoints	Appreciate the followup
December 13, 2023	Colchester councillors	Colchester County	Telephone	Improving relations with developers, transparency/accountability on agreements, seize potential for municipality with new projects	Decommissioning of legacy projects, municipality can benefit from good new projects
January 15, 2024	Development Officers	Colchester County Pictou County	Email	Asked about the requirements of the community meeting for the development permit process in each county. Wants to know if one community meeting can cover the requirements for both municipalities. JP followed up from the Jan 15 email asking █ and █ to confirm the chosen info session location meets their bylaw criteria for hosting a community info session. JP also asked █ if there was any additional discourse requirement to meet the specific needs for that Municipality.	█ confirmed the location aligns with the bylaw. █ noted he would have to loop in a Community Monitoring Committee Rep on the discussion to meet all the criteria.
February 5, 2024	Development Officers	Colchester County Pictou County	Email	CF looped █ into the conversation asking if they would want to be on the Community Monitoring Committee for the project, and if she could make the info session █ responded that the date and location worked.	No concerns mentioned
February 7, 2024	Development Officer	Colchester County	Email	Project overview, turbine locations, open house plan	Very supportive, no concerns
February 13, 2024	Community member	Pictou County	In-Person	Project overview, turbine locations, open house plan	Concerns about recently clearcut forestry, turbine proximity and effects. Supportive of getting off coal.
February 13, 2024	Community member	Pictou County	In-Person	Project overview, turbine locations, open house plan	No concerns mentioned
February 13, 2024	Community member	Pictou County	In-Person	Project overview, turbine locations, open house plan	Generally supportive but has concerns for bird effects
February 13, 2024	Community member	Pictou County	In-Person	Project overview, turbine locations, open house plan	Very supportive, no concerns
February 22, 2024	Development Officer	Colchester County	Phone	█ asked for clarity on the Wind Turbine Bylaw for advertising a public meeting. █ said he would check and follow up.	
February 22, 2024	Development Officer	Colchester County	Email	CF followed up to clarify advertisements must take place at least 7 and 14 days before the public event.	

February 22, 2024	Development Officer	Colchester County	Email	JP asked if moving the public meeting date to March 21st would impact the bylaw requirements since the proposed CMC person would be unable to attend.
February 23, 2024	Development Officer	Colchester County	Phone	JP called [redacted] to follow up from the email. [redacted] said he would have to check with legal to see what the bylaw requires.
February 28, 2024	Councillor	Colchester County	Email	Informed [redacted] that the public information session would be taking place on March 21st.
March 4, 2024	Stakeholder Mailing List	Community member	Email	Shared newsletter with information session details to all mailing list
March 7, 2024	Councillor	Colchester County	Teams	JP and JR met with [redacted] to give an overview of the project, various studies being conducted, and the materials that would be at the info session. JP will send handout materials to [redacted] after the info session has occurred.
March 21, 2024	Community member	Community member	Phone	[redacted] called [redacted] and MM called back to answer questions; MM left voicemail but did not hear back
March 21, 2024	Community member	Community member	Phone	[redacted] emailed community email address with questions about mapping, PPA, etc. MM called back and discussed questions and followed up with materials shared at open house
March 21, 2024	Local Community	Community member	In Person	Hosted a public information session from 4-7pm at the Kemptown Community Centre to discuss the project status and bidding into the provincial Green Choice Program. [redacted] called to discuss feedback on forestry practices for CR suggesting that purchasing land nearby for the local land trust would be a good way to offset clearing; MM followed up with an email to get other feedback MM sent [redacted] the handout from the open house in the mail so she will have a colour version of the mapping GG emailed and asked for information about the GCP and if construction will happen before or after we get a PPA; MM provided info.
March 27, 2024	Community member	North Nova Forest Owners Co-op Ltd	Phone, email	
April 15, 2024	Community member		Email, Mail	
May 1, 2024	Community member		Email	
May 2, 2024	Development Officer	Colchester County	Email	JP emailed CF asking for a mailing list to meet permitting requirements for the next information session, and if NF engineers can sign off on decommissioning cost estimates. [redacted] sent the mailing list and confirmed our engineers can sign off.
July 8, 2024	Community member	Kemptown Community Centre	Phone	MM called [redacted] after requested from [redacted] mentioned that some people felt the last open house was more about us providing information rather than receiving feedback. MM and [redacted] discussed why this might have been and come up with a couple solutions for future open houses: make it more clear that this project is not a done deal (still opportunity for feedback through permitting, directly with developer, etc.) and advertise the events on the community center facebook page. MM also confirmed that [redacted] can share her contact with community members who have questions or feedback.
July 9, 2024	Community Member		Phone	AM called asking about the status of the Project as they had received a flyer about it a while back. JP passed on the message to MM.

July 12, 2024	Community Member			Phone, Email	MM called [redacted] back and provided project update; [redacted] expressed concern about red lights on turbines at night impacting his view; MM explained these are required by Transport Canada and that we are engaging with them to identify less obtrusive options; MM offered to do a photomontage from [redacted] back yard to confirm the extent of the project that would be visible - [redacted] was interested. MM followed up with email with Jim to set up a time to get the required photomontage photo.				
July 18, 2024	Provincial Government	NSECC - EA Branch	Pictou County	Meeting	Environmental Assessment submission and logistics.				
2020 July	Land Owner		Pictou County	Letter	Land Rights Agreement				
2021 February 2010 February	Pictou County Municipal Council	Pictou County	Pictou County	Letter	Land Use By-law proposed amendments related to "Utility Scale" wind turbines only. Letter of support				Boundary covers Dalhousie and Pictou County portion of Clydesdale
25 February, 2022 11 August, 2023	Land Owner	Northern Lights Christmas Tree Farm AND James Shatley		Letter	Amending agreement was signed on this date Notice to landowner sent on this date				
Feb 20, 2022 May 3, 2011	Land Owner	Public Citizen		In-person	Amending Agreement was signed on this date Land Rights Agreement was signed on this date				Presentation to fire department and executive board members, letter of support signed by evert fire department member, annual receipt of donations
In 2012	Alma Volunteer Fire Department								Boundary covers Colchester County portion of Clydesdale
In 2012	Colchester County Municipal Council	Colchester County							Boundary covers part of the Colchester County portion of Clydesdale
In 2012	Colchester County Municipal Councillor District 7	Colchester County							Boundary covers part of the Colchester County portion of Clydesdale
In 2012	Colchester County Municipal Councillor District 8/ Deputy Mayor	Colchester County		Phone, presentation to council, in-person meetings, emails					Boundary covers part of the Colchester County portion of Clydesdale
March 26 - April 8, 2024	Community member			Email	[redacted] emailed the community email asking about additional public meetings, and expressing concerns about there not being signage posted in the project area when development activities are ongoing to let people nearby know; MM responded stating another open house will take place in the summer upon EA submission (before the public comment period ends), and that we will take away the request for signage.				*Signage on site during development for trail users