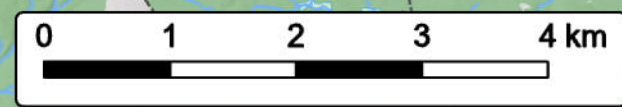
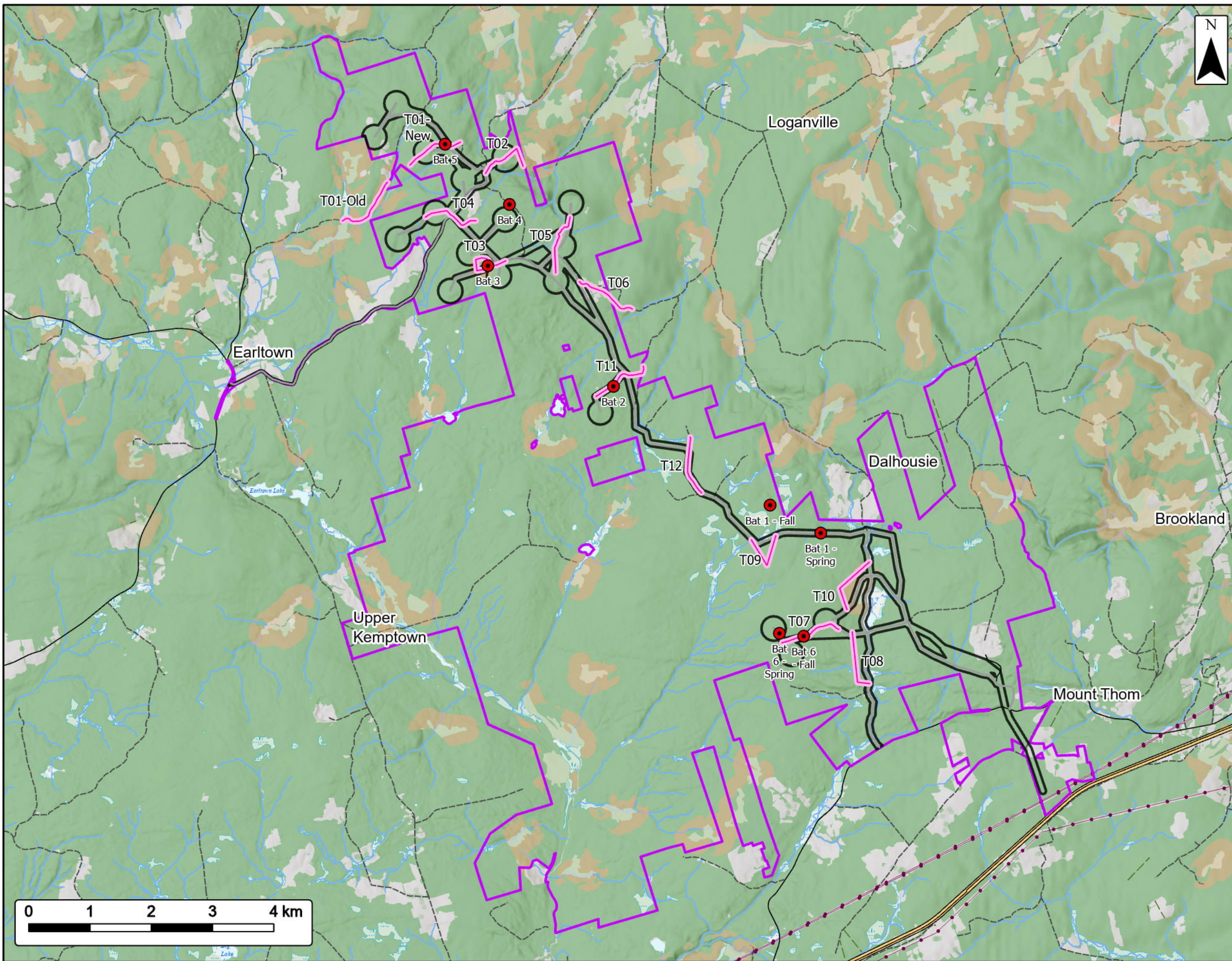


# Clydesdale Ridge Wind Project

Fauna Field Results

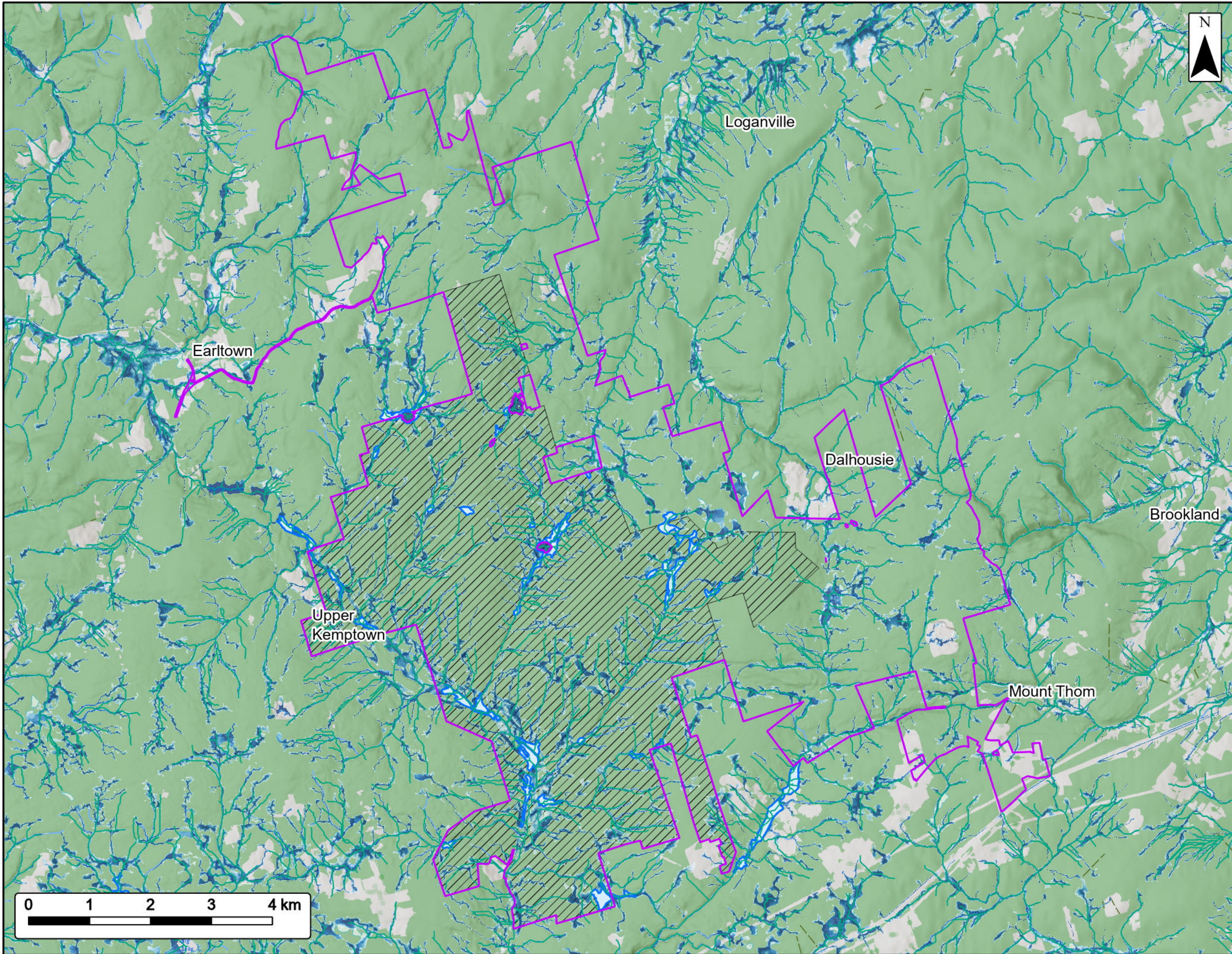


Project Area		Utilities (line)		Existing Transmission Lines	
Study Area		Transportation		Trans-Canada Highway	
Project Infrastructure		Road		Unpaved Road	
Bat Monitor Locations		Water Features		Mapped Stream	
Moose Transects		Mapped Indefinite Stream		Mapped Lakes and Rivers	
Modelled Suitable Moose Habitat		Mapped Wet Areas			
Winter Cover					
Winter Forage					



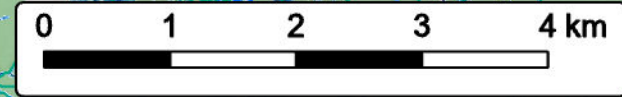
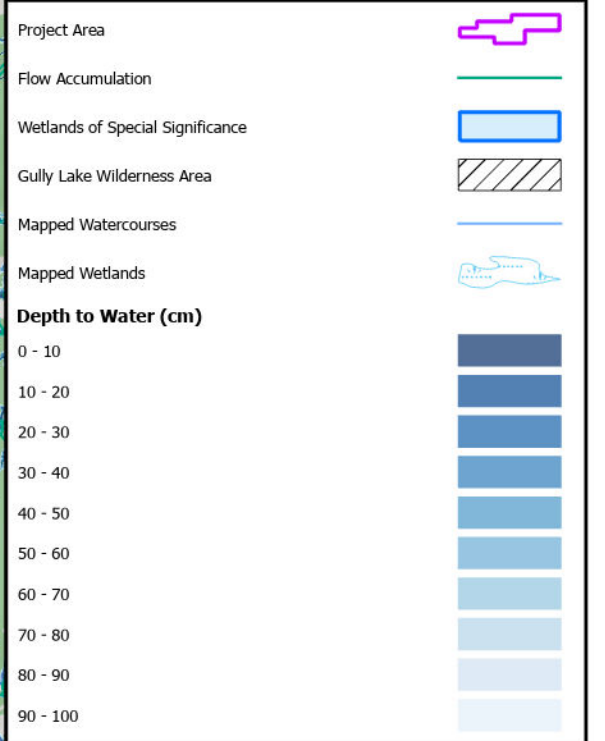
Coordinate System: NAD83 UTM Zone 20N		Sources: ESRI Basemaps, GeoNOVA, SNSIS, NSNRR, ACCDC, IBA Canada, CNWI, HERE, Garmin, USGS	
Date:	Jul 2024	Project #:	24-10018
Scale:	1:60,000	Drawing #:	<b>11.2</b>
Drawn By:	K. Wallace		
Checked By:	M. Juurlink		





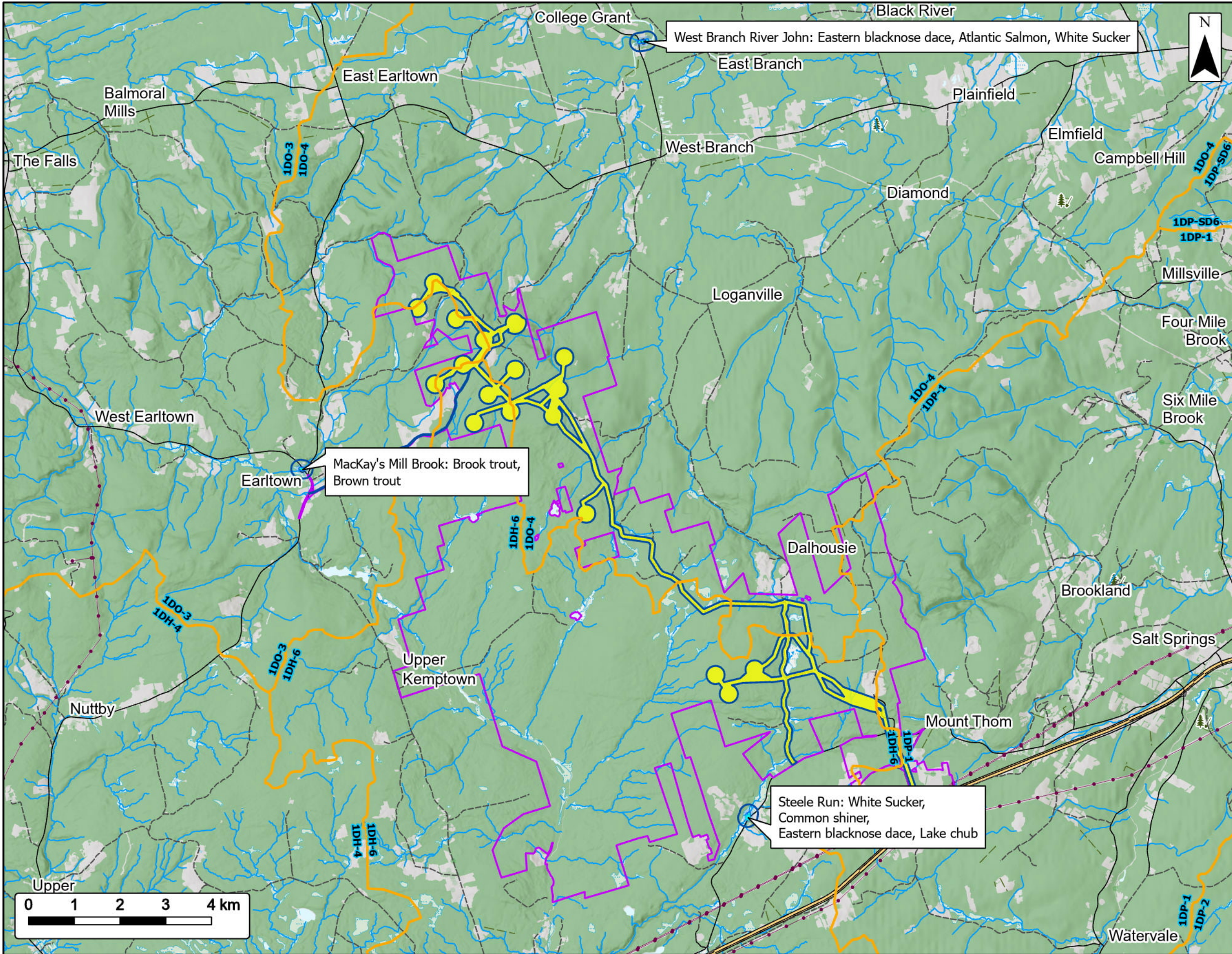
# Clydesdale Ridge Wind Project

Aquatic Survey Methods




Coordinate System: NAD83 UTM Zone 20N		Sources: ESRI Basemaps, GeoNOVA, SNSIS, NSNRR, ACCDC, IBA Canada, CNWI, HERE, Garmin, USGS	
Date:	Jul 2024	Project #:	24-10018
Scale:	1:60,000	Drawing #:	<b>11.3</b>
Drawn By:	K. Wallace		
Checked By:	M. Juurlink		





### Clydesdale Ridge Wind Project


*Fish Survey*



---

- Project Area ▬
- Study Area ▬
- Secondary Watershed Boundary ▬
- Electrofishing Reach ▬
- Fish Study Area
- Utilities (line)**
- Existing Transmission Lines —●—
- Transportation**
- Trans-Canada Highway
- Road
- Unpaved Road
- Water Features**
- Mapped Watercourses ▬
- Mapped Lakes and Rivers ▬
- Mapped Wet Areas ▬


---

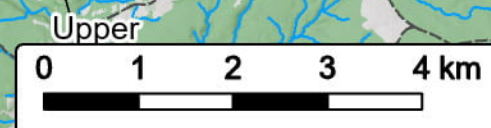


Coordinate System: NAD83 UTM Zone 20N

Sources: ESRI Basemaps, GeoNOVA, SNSIS, NSNRR, ACCDC, IBA Canada, CNWI, HERE, Garmin, USGS

Date: Jul 2024	Project #: 24-10018
Scale: 1:80,000	Drawing #: <b>11.4</b>
Drawn By: K. Wallace	<b>11.4</b>
Checked By: M. Juurlink	





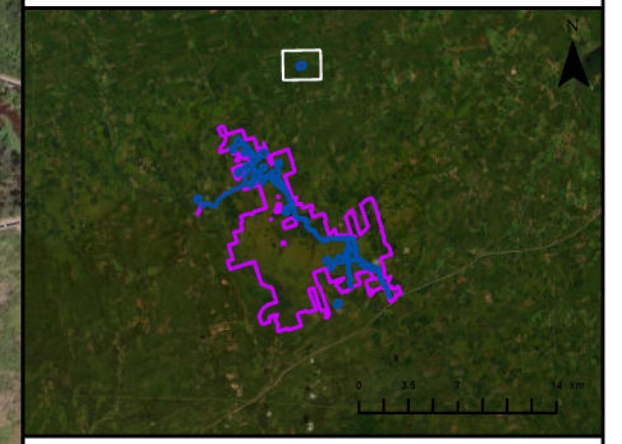


**Clydesdale Ridge Wind Project**  
Fish Survey



Project Area	
Study Area	
Fish Study Area	
Electrofishing Reach	
<b>Transportation</b>	
Road	
Unpaved Road	
<b>Water Features</b>	
Mapped Watercourses	
Mapped Wet Areas	

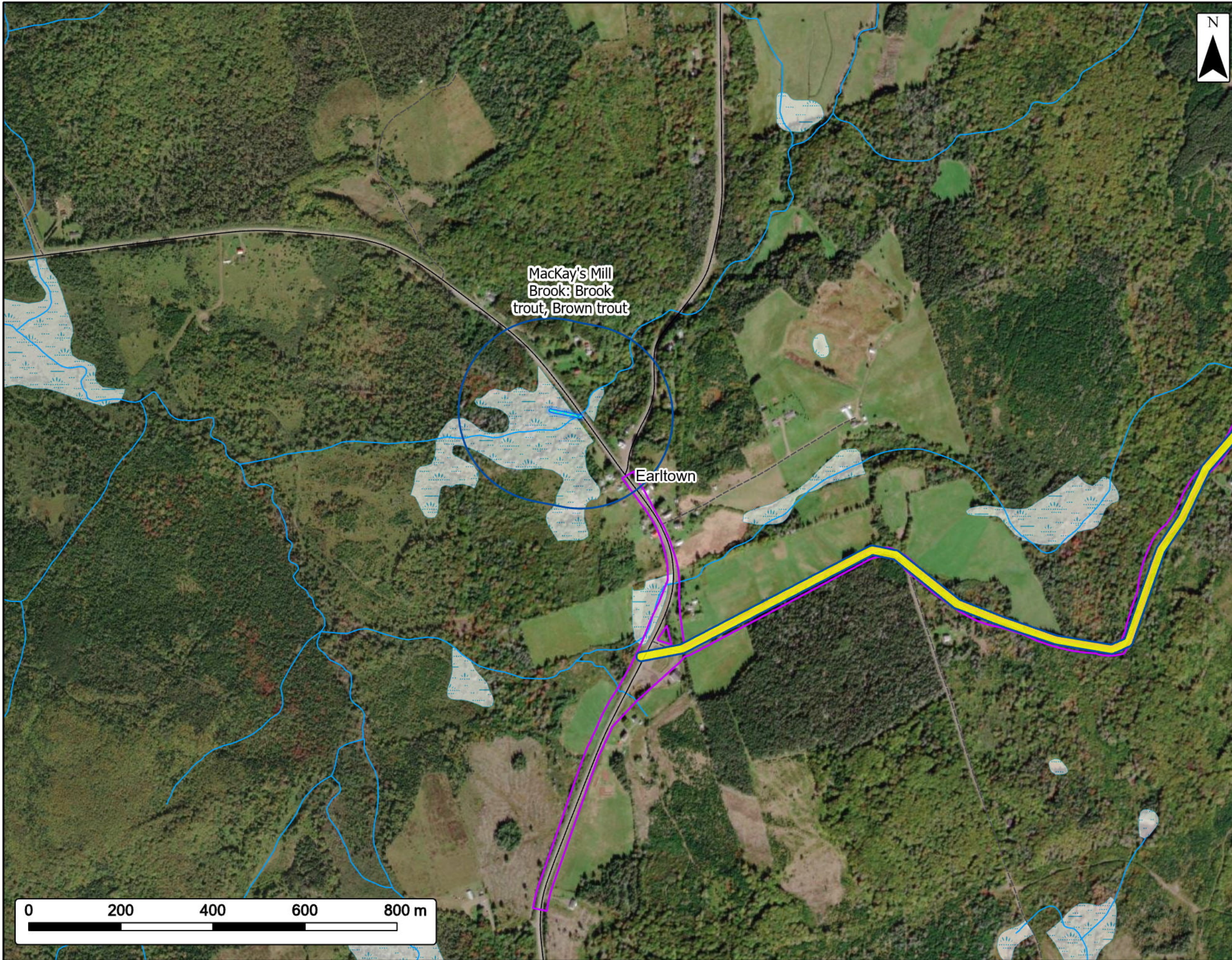
West Branch River John: Eastern blacknose dace, Atlantic Salmon, White Sucker



Coordinate System: NAD83 UTM Zone 20N Sources: ESRI Basemaps, GeoNOVA, SNSIS, NSNRR, ACCDC, IBA Canada, CNWI, HERE, Garmin, USGS

Date:	Jul 2024	Project #:	24-10018
Scale:	1:8,000	Drawing #:	<b>11.4</b>
Drawn By:	K. Wallace		
Checked By:	M. Juurlink		





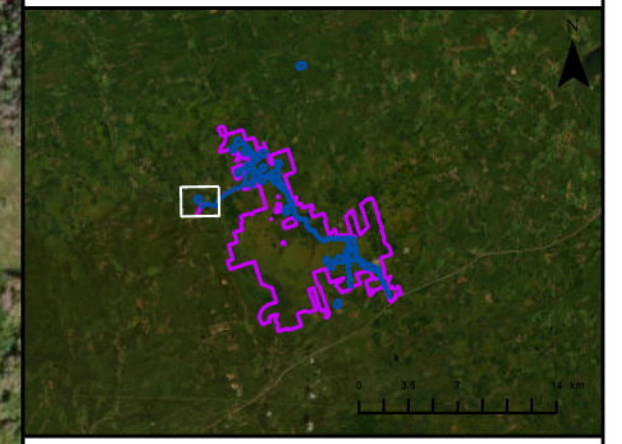
**Clydesdale Ridge Wind Project**  
Fish Survey



Project Area	
Study Area	
Fish Study Area	
Electrofishing Reach	
<b>Transportation</b>	
Road	
Unpaved Road	
<b>Water Features</b>	
Mapped Watercourses	
Mapped Wet Areas	

Mackay's Mill  
Brook: Brook  
trout, Brown trout

Earlton



Coordinate System: NAD83 UTM Zone 20N Sources: ESRI Basemaps, GeoNOVA, SNSIS, NSNRR, ACCDC, IBA Canada, CNWI, HERE, Garmin, USGS

Date:	Jul 2024	Project #:	24-10018
Scale:	1:8,000	Drawing #:	<b>11.4</b>
Drawn By:	K. Wallace		
Checked By:	M. Juurlink		



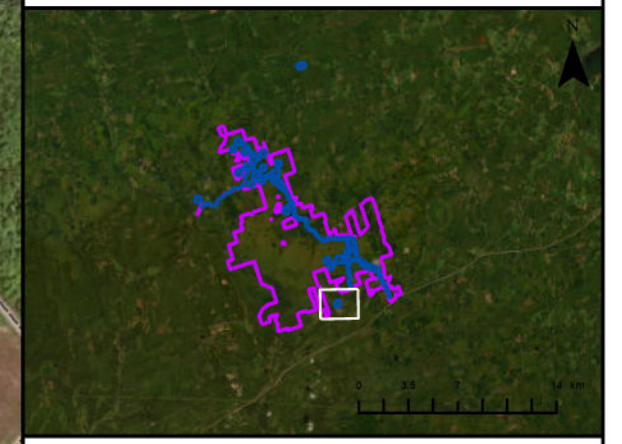


# Clydesdale Ridge Wind Project

Fish Survey

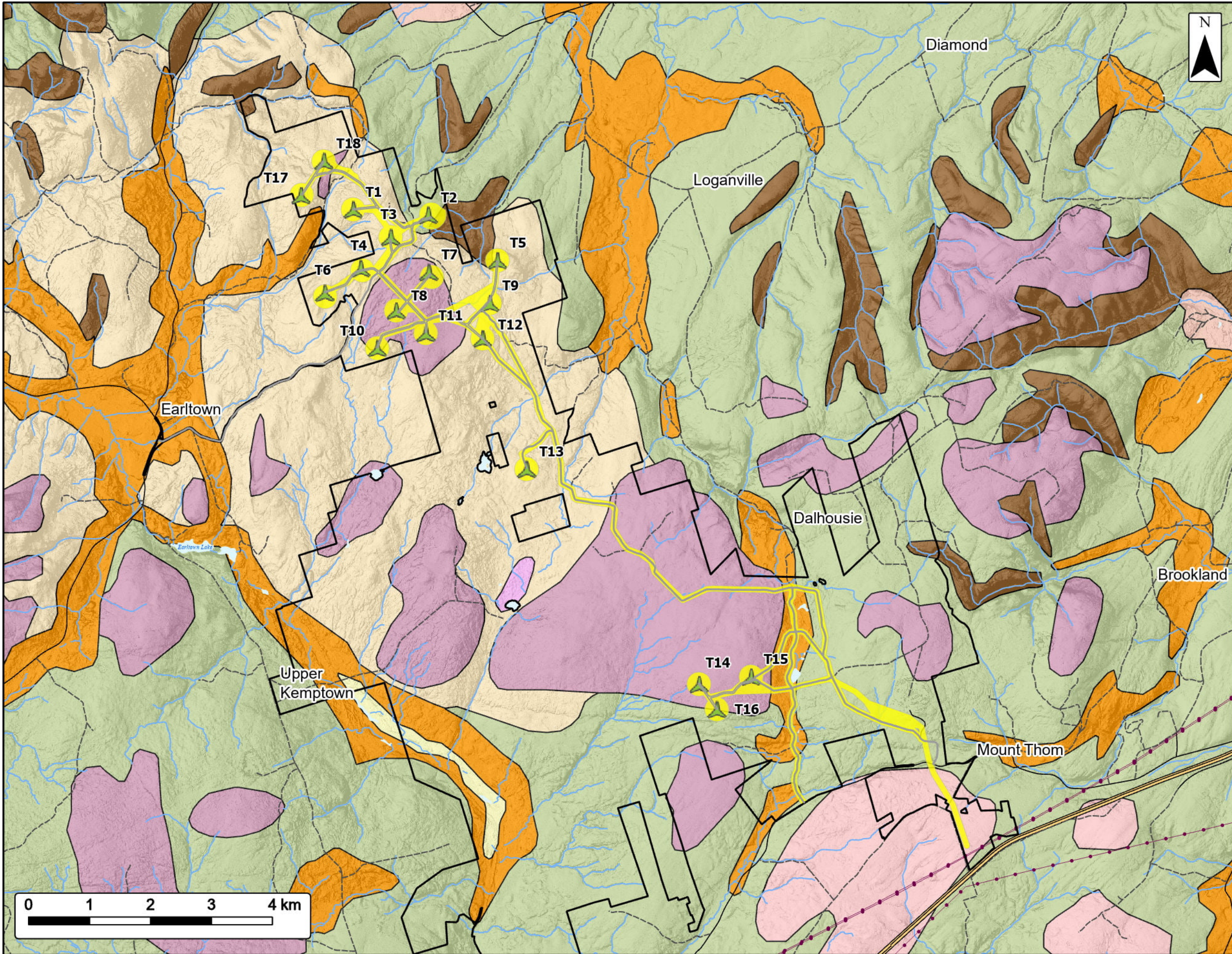


Project Area	
Study Area	
Fish Study Area	
Electrofishing Reach	
<b>Utilities (line)</b>	
Existing Transmission Lines	
<b>Transportation</b>	
Road	
Unpaved Road	
<b>Water Features</b>	
Mapped Watercourses	
Mapped Wet Areas	



Coordinate System: NAD83 UTM Zone 20N		Sources: ESRI Basemaps, GeoNOVA, SNSIS, NSNRR, ACCDC, IBA Canada, CNWI, HERE, Garmin, USGS	
Date:	Jul 2024	Project #:	24-10018
Scale:	1:8,000	Drawing #:	<b>11.4</b>
Drawn By:	K. Wallace		
Checked By:	M. Juurlink		





### Clydesdale Ridge Wind Project

*Surficial Geology*

Project Area		Utilities (line)	
Study Area		Transportation	
Proposed Turbine Location		Road	
Project Infrastructure		Unpaved Road	

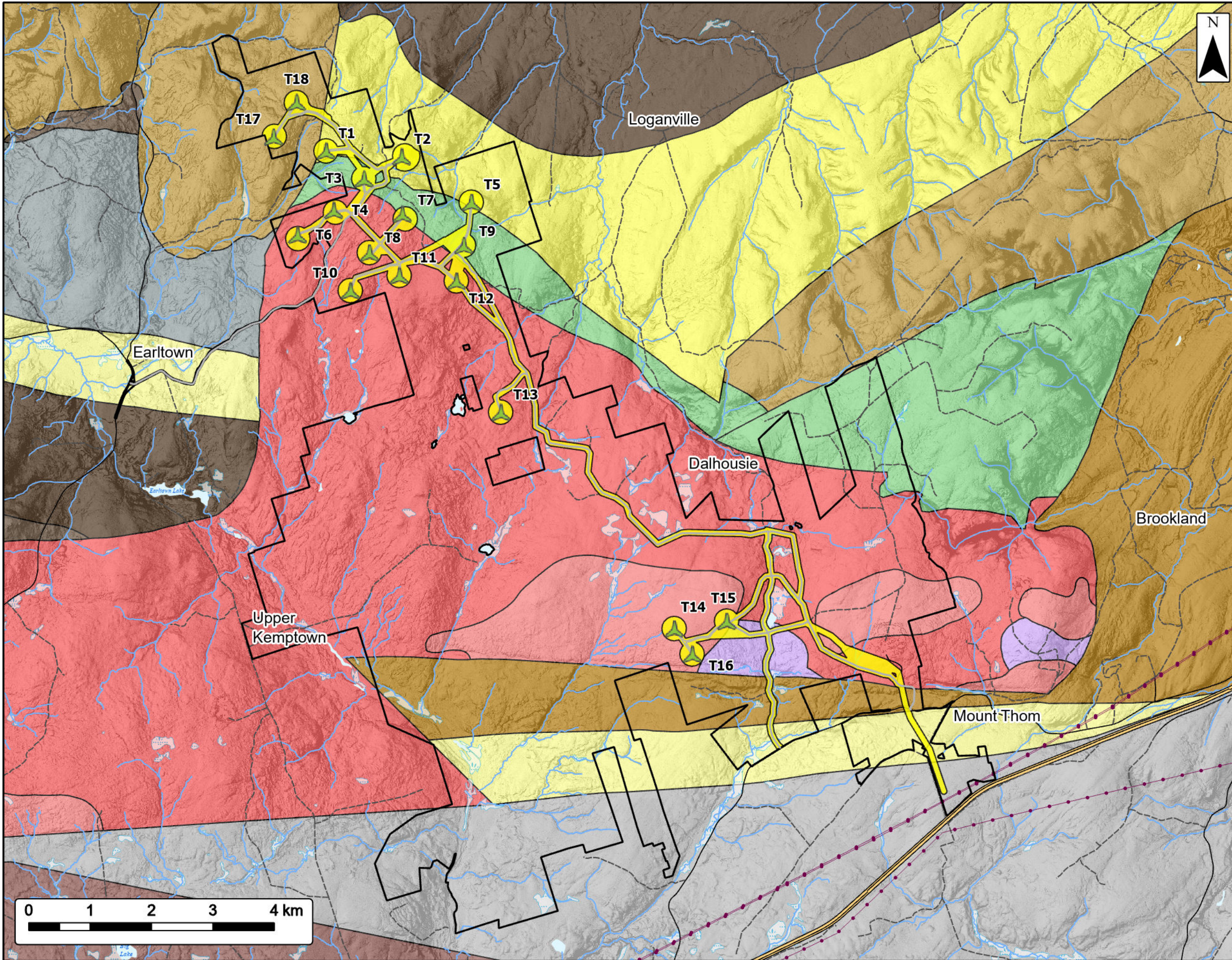
Surficial Geology By Unit	
Alluvial Deposits	
Bedrock	
Colluvial Deposits	
Kame Fields and Esker Systems	
Organic Deposits	
Outwash Fans, Deltas, and Valley Train Deposits	
Residuum	
Silty Till Plain	
Stony Till Plain	

Water Features	
NSECC Mapped Watercourses	
Mapped Lakes and Rivers	

0 50 100 200 km

Coordinate System: NAD83 UTM Zone 20N Sources: ESRI Basemaps, GeoNOVA, SNSIS, NSNRR, ACCDC, IBA Canada, CNWI, HERE, Garmin, USGS

Date: Jul 2024	Project #: 24-10018
Scale: 1:60,000	Drawing #: <b>12.1</b>
Drawn By: K. Wallace	<b>12.1</b>
Checked By: M. Juurlink	



# Clydesdale Ridge Wind Project

## Bedrock Geology

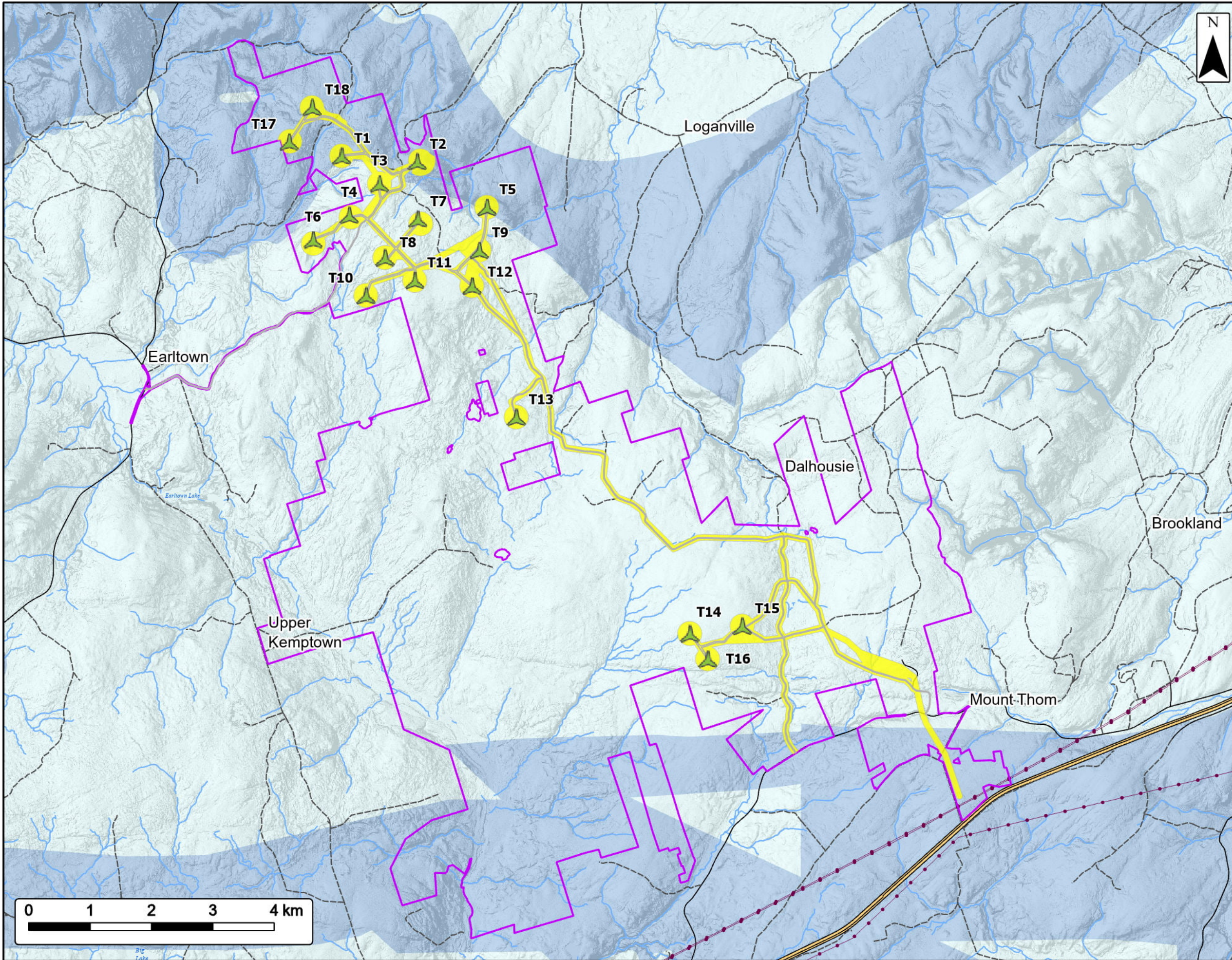
Project Area		Utilities (line)	
Study Area		Existing Transmission Lines	
Proposed Turbine Location		Transportation	
Project Infrastructure		Trans-Canada Highway	
		Road	
		Unpaved Road	
<b>Bedrock Geology By Formation</b>		<b>Water Features</b>	
Pictou Group		NSECC Mapped Watercourses	
Boss Point Formation		Mapped Lakes and Rivers	
Claremont and Millsville Formations		Mapped Wet Areas	
Mabou Group			
Falls Formation			
Nutby Formation			
Diamond Brook Formation			
Byers Brook Formation			
Earltown Formation			
Dalhousie Mountain Volcanics			
Warwick Mountain Formation			
Mount Thom Complex			
Devonian - Carboniferous Granite: Cape Breton Island			
Neoproterozoic: diorite - gabbro			



Coordinate System: NAD83 UTM Zone 20N		Sources: ESRI BaseMaps, GeoNOVA, SNSIS, NSNRR, ACCDC, IBA Canada, CNWI, HERE, Garmin, USGS	
Date:	Jul 2024	Project #:	24-10018
Scale:	1:60,000	Drawing #:	<b>12.2</b>
Drawn By:	K. Wallace		
Checked By:	M. Juurlink		







### Clydesdale Ridge Wind Project

*Karst Geology*

---

Study Area	
Study Area	
Proposed Turbine Location	
Project Infrastructure	

**Karst Risk**

Medium Risk	
Low Risk	

**Utilities (line)**

Existing Transmission Lines	
-----------------------------	--

**Transportation**

Trans-Canada Highway	
Road	
Unpaved Road	

**Water Features**

NSECC Mapped Watercourses	
---------------------------	--

---

0 50 100 200 km

Coordinate System: NAD83 UTM Zone 20N

Sources: ESRI Basemaps, GeoNOVA, SNSIS, NSNRR, ACCDC, IBA Canada, CNWI, HERE, Garmin, USGS

Date: Jul 2024	Project #: 24-10018
Scale: 1:60,000	Drawing #: <b>12.3</b>
Drawn By: K. Wallace	
Checked By: M. Juurlink	