

Clydesdale Ridge Wind Project
Well Log Database



- Project Area
- Study Area
- Project Infrastructure
- Proposed Turbine Location
- 1 km Project Area Buffer
- Groundwater Well - Drilled
- Utilities (line)**
- Existing Transmission Lines
- Transportation**
- Trans-Canada Highway
- Road
- Unpaved Road
- Water Features**
- NSECC Mapped Watercourses
- Mapped Lakes and Rivers
- Mapped Wet Areas

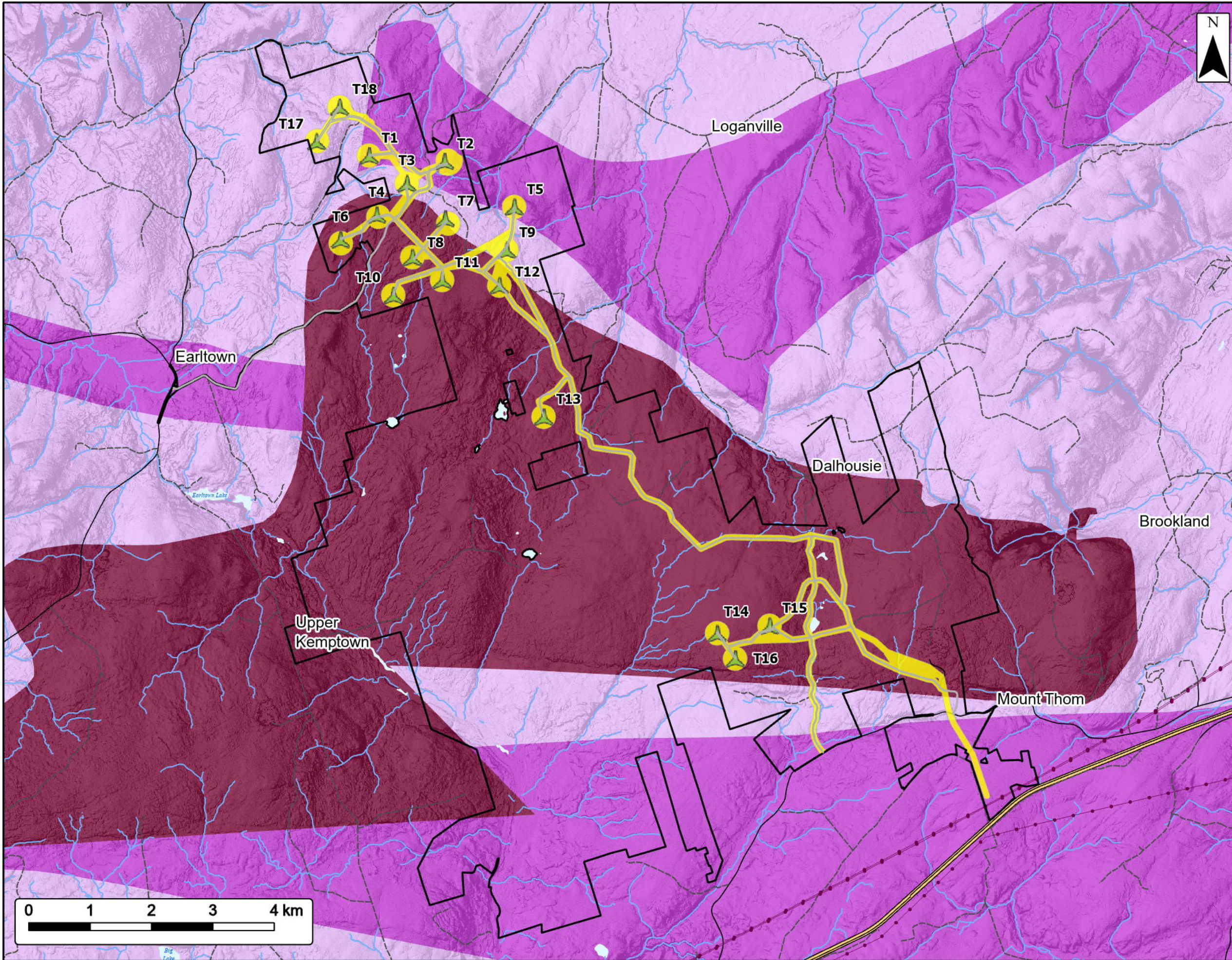
* Wells were only included if their location accuracy was below 1000m



Coordinate System: NAD83 UTM Zone 20N Sources: ESRI Basemaps, GeoNOVA, SNSIS, NSNRR, ACCDC, IBA Canada, CNWI, HERE, Garmin, USGS

Date: Jul 2024	Project #: 24-10018
Scale: 1:65,000	Drawing #: 12.4
Drawn By: K. Wallace	
Checked By: M. Juurlink	



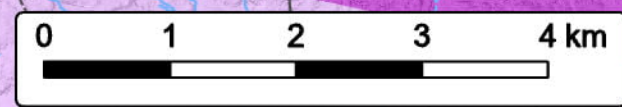


Clydesdale Ridge Wind Project

Arsenic Risk

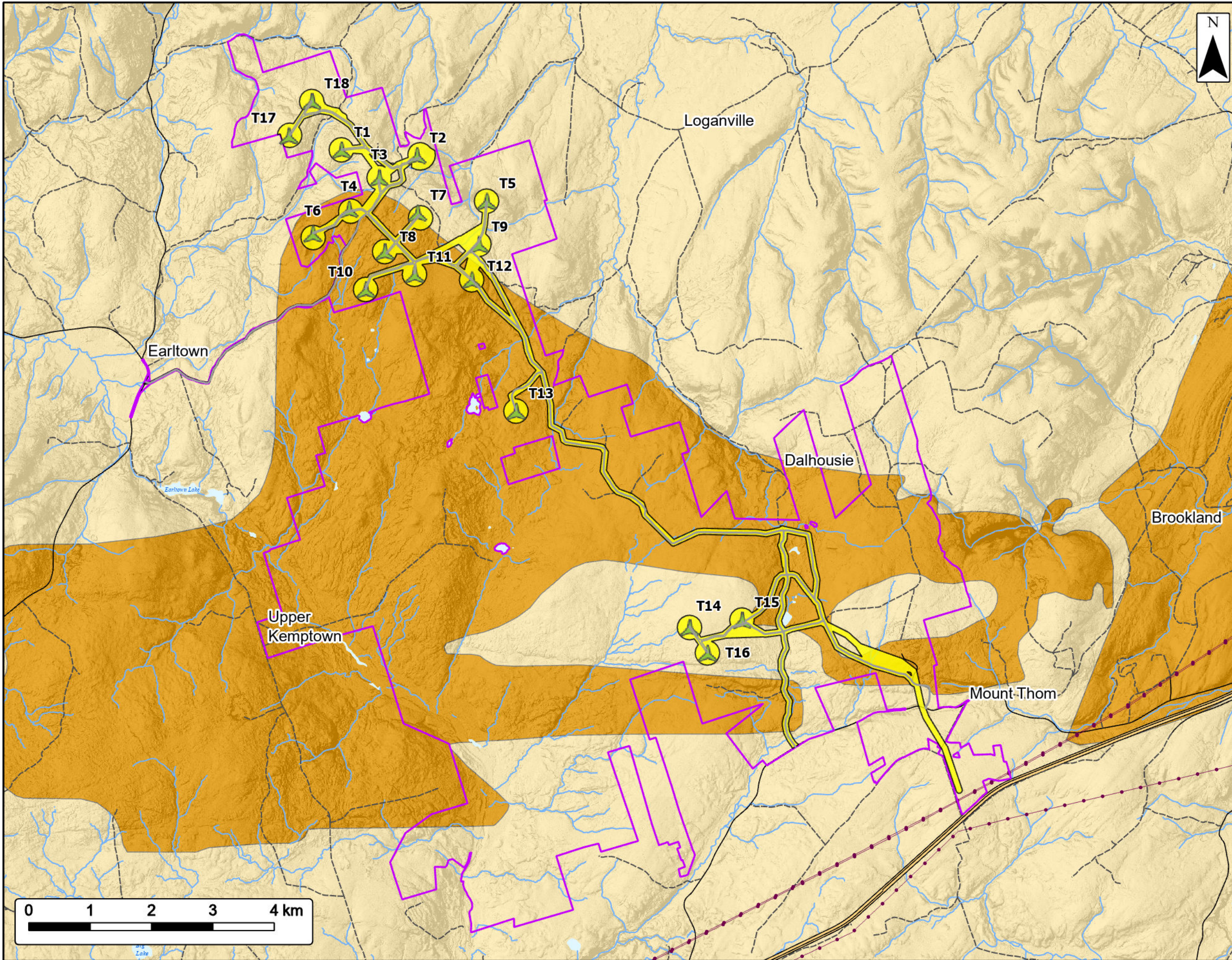


- Project Area
- Study Area
- Proposed Turbine Location
- Project Infrastructure
- Risk**
- High Risk
- Medium Risk
- Low Risk
- Utilities (line)**
- Existing Transmission Lines
- Transportation**
- Trans-Canada Highway
- Road
- Unpaved Road
- Water Features**
- NSECC Mapped Watercourses
- Mapped Lakes and Rivers



Coordinate System: NAD83 UTM Zone 20N		Sources: ESRI Basemaps, GeoNOVA, SNSIS, NSNRR, ACCDC, IBA Canada, CNWI, HERE, Garmin, USGS	
Date:	Jul 2024	Project #:	24-10018
Scale:	1:60,000	Drawing #:	12.5
Drawn By:	K. Wallace		
Checked By:	M. Juurlink		





Clydesdale Ridge Wind Project

Uranium Risk



- Project Area
- Study Area
- Project Infrastructure
- Proposed Turbine Location
- Relative Risk of Uranium in Bedrock Wells**
- Low Risk
- Medium Risk
- Utilities (line)**
- Existing Transmission Lines
- Transportation**
- Trans-Canada Highway
- Road
- Unpaved Road
- Water Features**
- NSECC Mapped Watercourses
- Mapped Lakes and Rivers



Coordinate System: NAD83 UTM Zone 20N		Sources: ESRI Basemaps, GeoNOVA, SNSIS, NSNRR, ACCDC, IBA Canada, CNWI, HERE, Garmin, USGS	
Date:	Jul 2024	Project #:	24-10018
Scale:	1:60,000	Drawing #:	12.6
Drawn By:	K. Wallace		
Checked By:	M. Juurlink		



Clydesdale Ridge Wind Project

Priority Species Review



Project Area

- Study Area
- Proposed Turbine Location
- Abandoned Mine Openings
- ACCDC Observations*
- Vertebrate Fauna
- Nonvascular Flora
- Vascular Flora
- Invertebrate Fauna
- Significant Species and Habitats
- Deer Wintering
- Gully Lake Wilderness Area
- Wilderness Area

Utilities (line)

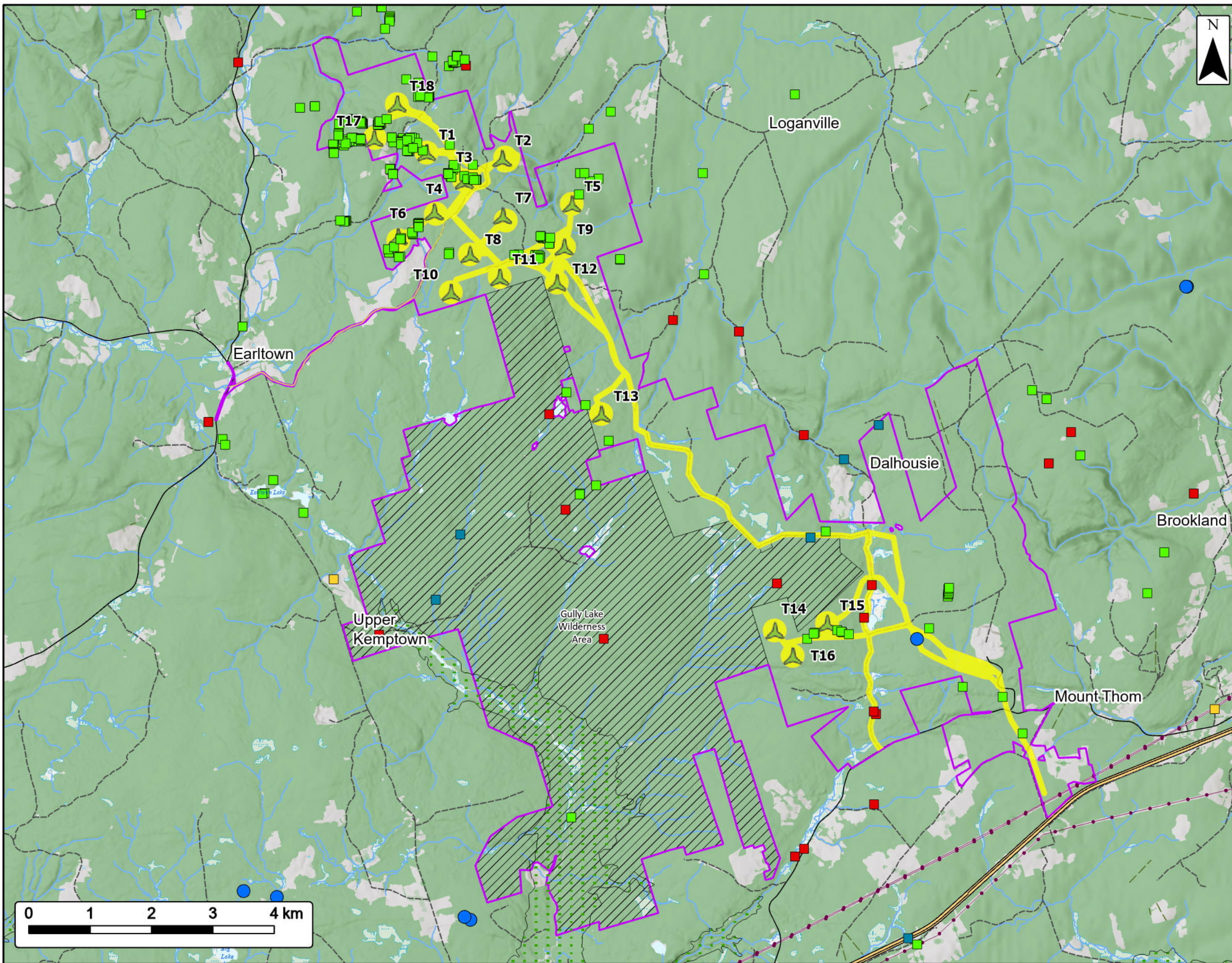
- Existing Transmission Lines

Transportation

- Trans-Canada Highway
- Road
- Unpaved Road

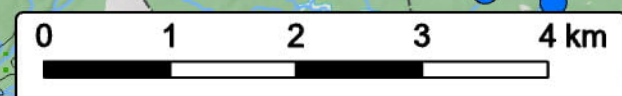
Water Features

- NSECC Mapped Watercourses
- Mapped Lakes and Rivers
- Mapped Wet Areas



Coordinate System: NAD83 UTM Zone 20N Sources: ESRI Basemaps, GeoNOVA, SNSIS, NSNRR, ACCDC, IBA Canada, CNWI, HERE, Garmin, USGS

Date:	Jul 2024	Project #:	24-10018
Scale:	1:60,000	Drawing #:	12.7
Drawn By:	K. Wallace		
Checked By:	M. Juurlink		



Clydesdale Ridge Wind Farm

Flora Field Results



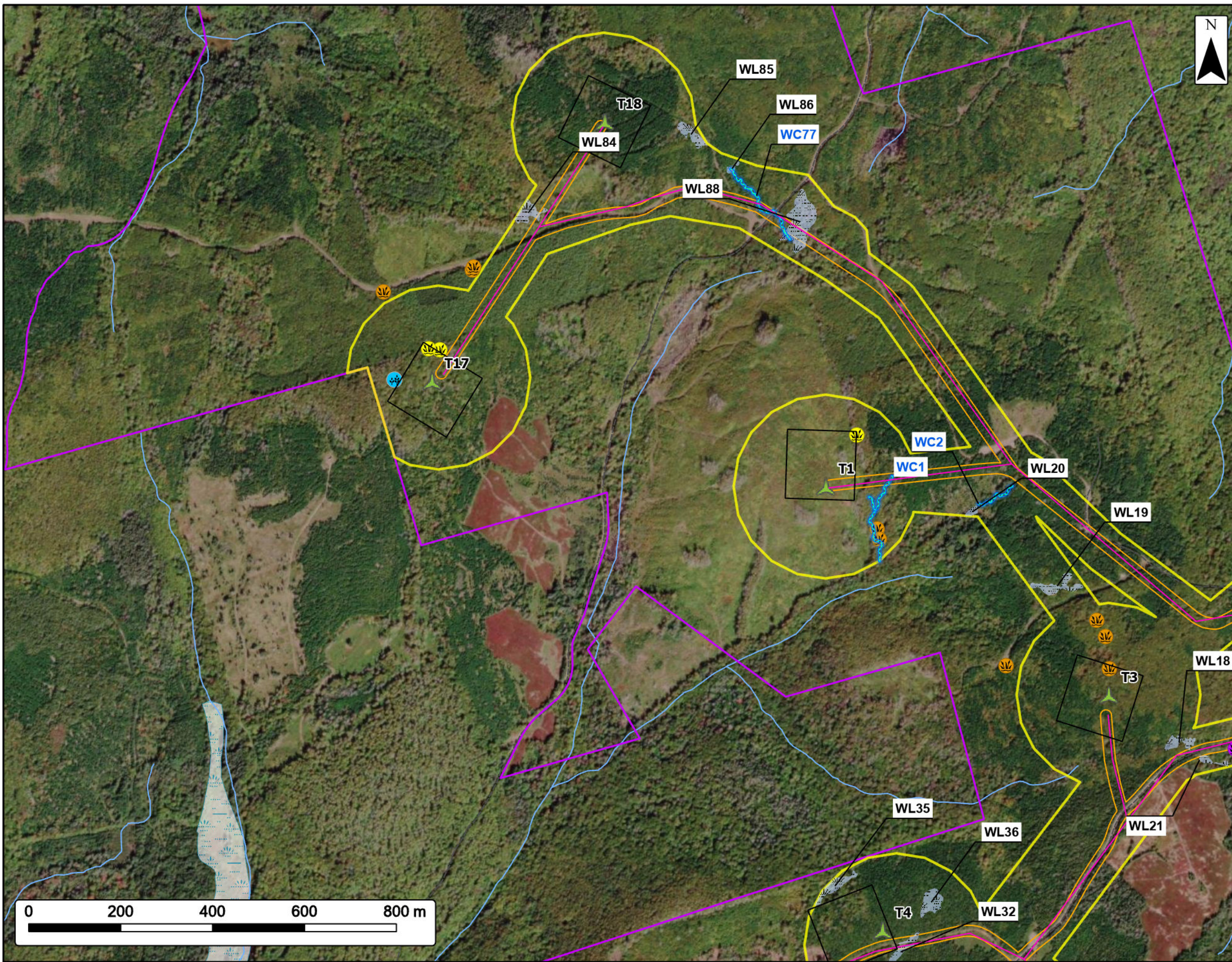
- Project Area Transportation
- Study Area Unpaved Road
- Proposed Turbine Location **Water Features**
- Road Footprint NSECC Mapped Watercourses
- Turbine Pads Mapped Wet Areas
- Collector Line
- Field Delineated Watercourse
- Field Delineated Wetland
- American Beech
- Large Purple Fringed Orchid
- Pompom-tipped Shadow Lichen
- Stoloniferous Foamflower

SAR species locations have been removed and are reported directly to NSECC



Coordinate System: NAD83 UTM Zone 20N Sources: ESRI Basemaps, GeoNOVA, SNSIS, NSNRR, ACCDC, IBA Canada, CNWI, HERE, Garmin, USGS

Date:	Jul 2024	Project #:	24-10018
Scale:	1:8,000	Drawing #:	12.8
Drawn By:	K. Wallace		
Checked By:	M. Juurlink		



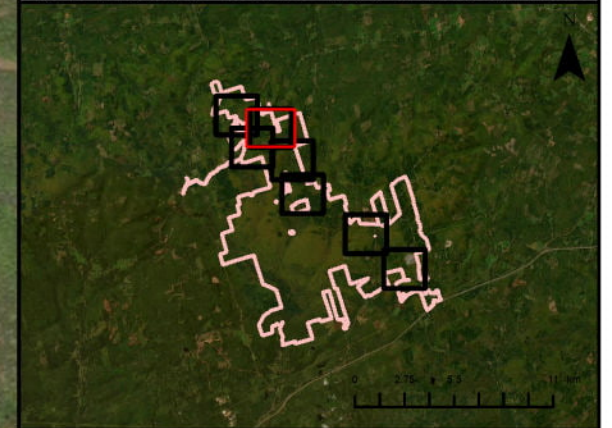
Clydesdale Ridge Wind Farm

Flora Field Results



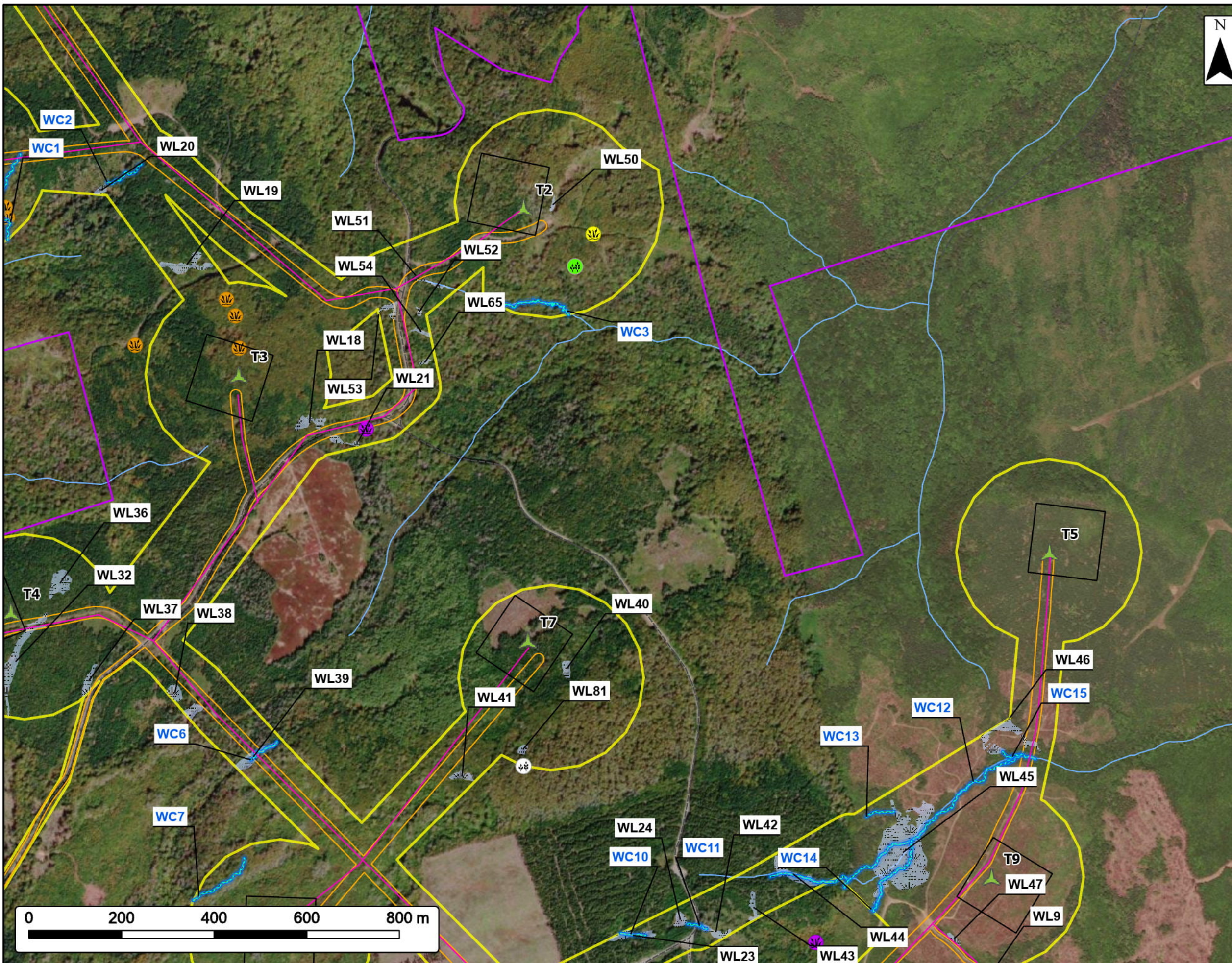
Project Area		Transportation
Study Area		Unpaved Road
Proposed Turbine Location		Water Features
Road Footprint		NSECC Mapped Watercourses
Turbine Pads		
Collector Line		
Field Delineated Watercourse		
Field Delineated Wetland		
American Beech		
Chaenotheca hispidula		
Large Purple Fringed Orchid		
Powdered Fringe Lichen		
Stoloniferous Foamflower		

SAR species locations have been removed and are reported directly to NSECC



Coordinate System: NAD83 UTM Zone 20N Sources: ESRI Basemaps, GeoNOVA, SNSIS, NSNRR, ACCDC, IBA Canada, CNWI, HERE, Garmin, USGS

Date:	Jul 2024	Project #:	24-10018
Scale:	1:8,000	Drawing #:	12.8
Drawn By:	K. Wallace		
Checked By:	M. Juurlink		

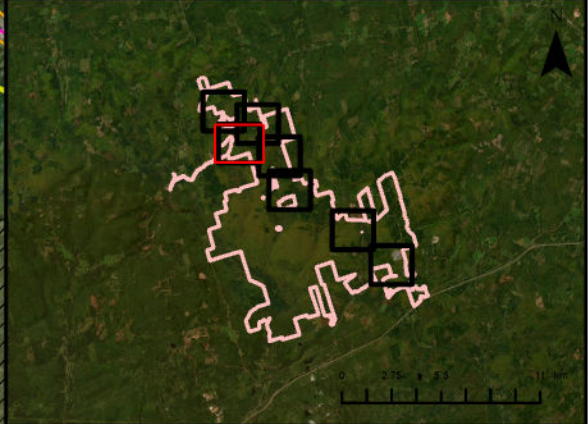
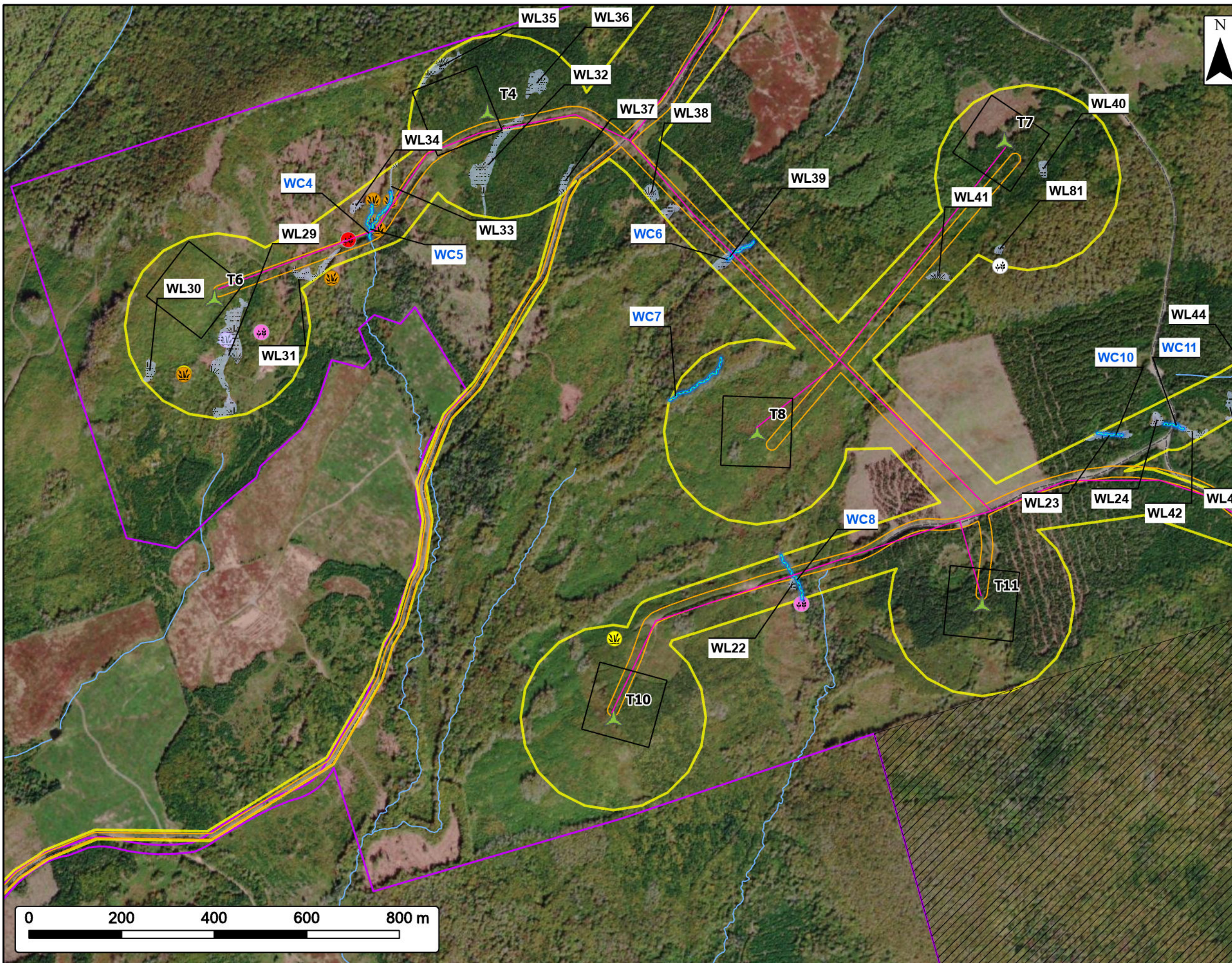


Clydesdale Ridge Wind Farm

Flora Field Results

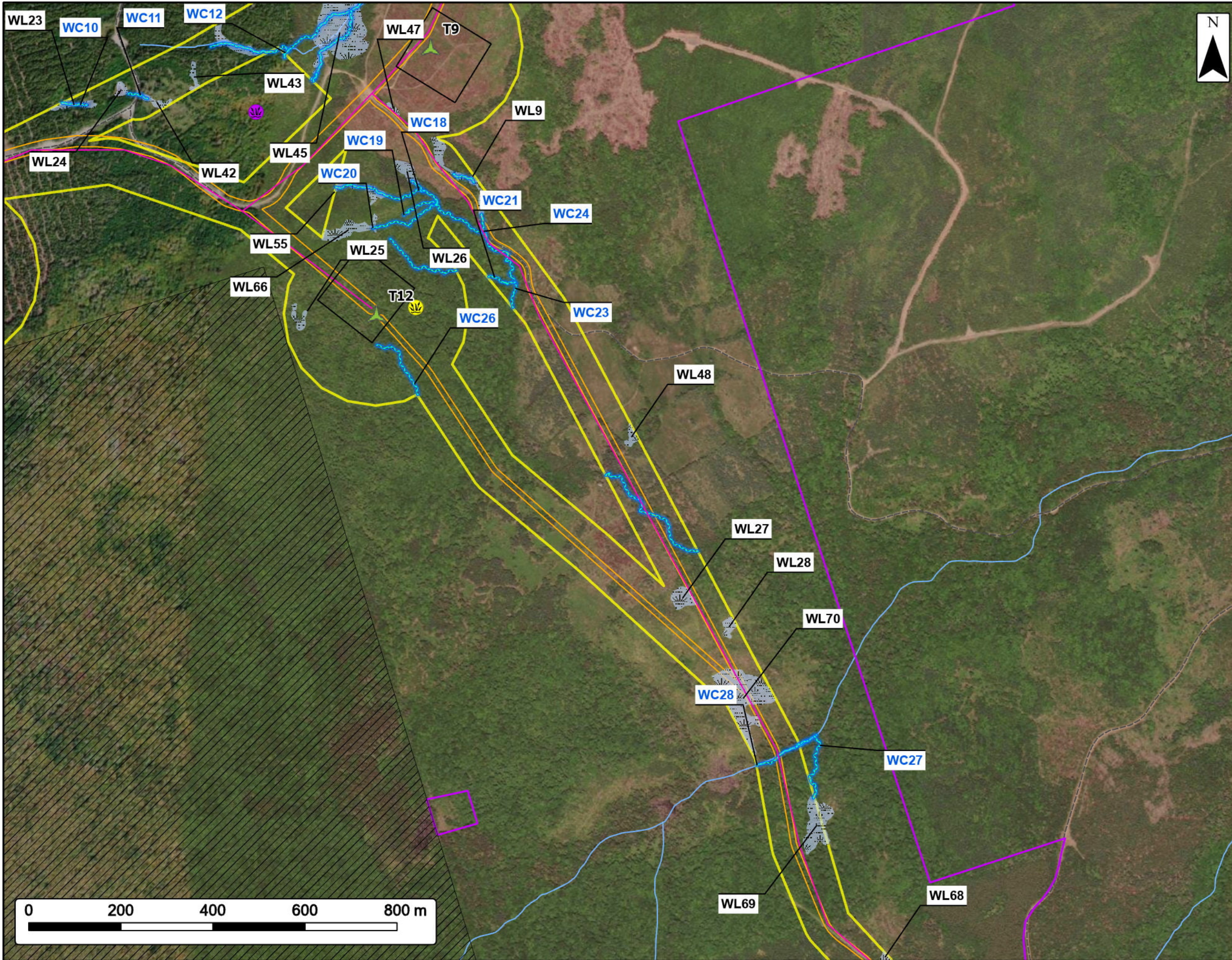


- Project Area Stoloniferous Foamflower
 - Study Area **Transportation**
 - Proposed Turbine Location Unpaved Road
 - Road Footprint **Water Features**
 - Gully Lake Wilderness Area NSECC Mapped Watercourses
 - Turbine Pads
 - Collector Line
 - Field Delineated Watercourse
 - Field Delineated Wetland
 - American Beech
 - Appressed Jellyskin Lichen
 - Chaenotheca hispidula
 - Granular Soil Foam Lichen
 - Large Purple Fringed Orchid
 - Small Purple Fringed Orchid
- SAR species locations have been removed and are reported directly to NSECC



Coordinate System: NAD83 UTM Zone 20N		Sources: ESRI Basemaps, GeoNOVA, SNSIS, NSNRR, ACCDC, IBA Canada, CNWI, HERE, Garmin, USGS	
Date:	Jul 2024	Project #:	24-10018
Scale:	1:8,000	Drawing #:	12.8
Drawn By:	K. Wallace		
Checked By:	M. Juurlink		





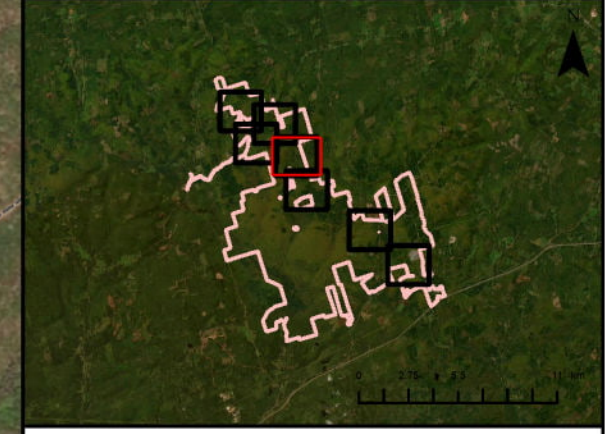
Clydesdale Ridge Wind Farm

Flora Field Results



- Project Area Transportation
- Study Area Unpaved Road
- Proposed Turbine Location NSECC Mapped Watercourses
- Road Footprint Water Features
- Gully Lake Wilderness Area NSECC Mapped Watercourses
- Turbine Pads
- Collector Line
- Field Delineated Watercourse
- Field Delineated Wetland
- American Beech
- Large Purple Fringed Orchid

SAR species locations have been removed and are reported directly to NSECC



Date: Jul 2024		Project #: 24-10018	
Scale: 1:8,000		Drawing #: 12.8	
Drawn By: K. Wallace			
Checked By: M. Juurlink			



Clydesdale Ridge Wind Farm

Flora Field Results



Project Area		Transportation	
Study Area		Unpaved Road	
Proposed Turbine Location		Water Features	
Road Footprint		NSECC Mapped Watercourses	
Gully Lake Wilderness Area		Mapped Lakes and Rivers	
Turbine Pads		Mapped Wet Areas	
Collector Line			
Field Delineated Watercourse			
Field Delineated Wetland			
American Beech			
Fuscopannaria soorediata			
Powdered Fringe Lichen			

SAR species locations have been removed and are reported directly to NSECC



Coordinate System: NAD83 UTM Zone 20N Sources: ESRI Basemaps, GeoNOVA, SNSIS, NSNRR, ACCDC, IBA Canada, CNWI, HERE, Garmin, USGS

Date:	Jul 2024	Project #:	24-10018
Scale:	1:8,000	Drawing #:	12.8
Drawn By:	K. Wallace		
Checked By:	M. Juurlink		

