

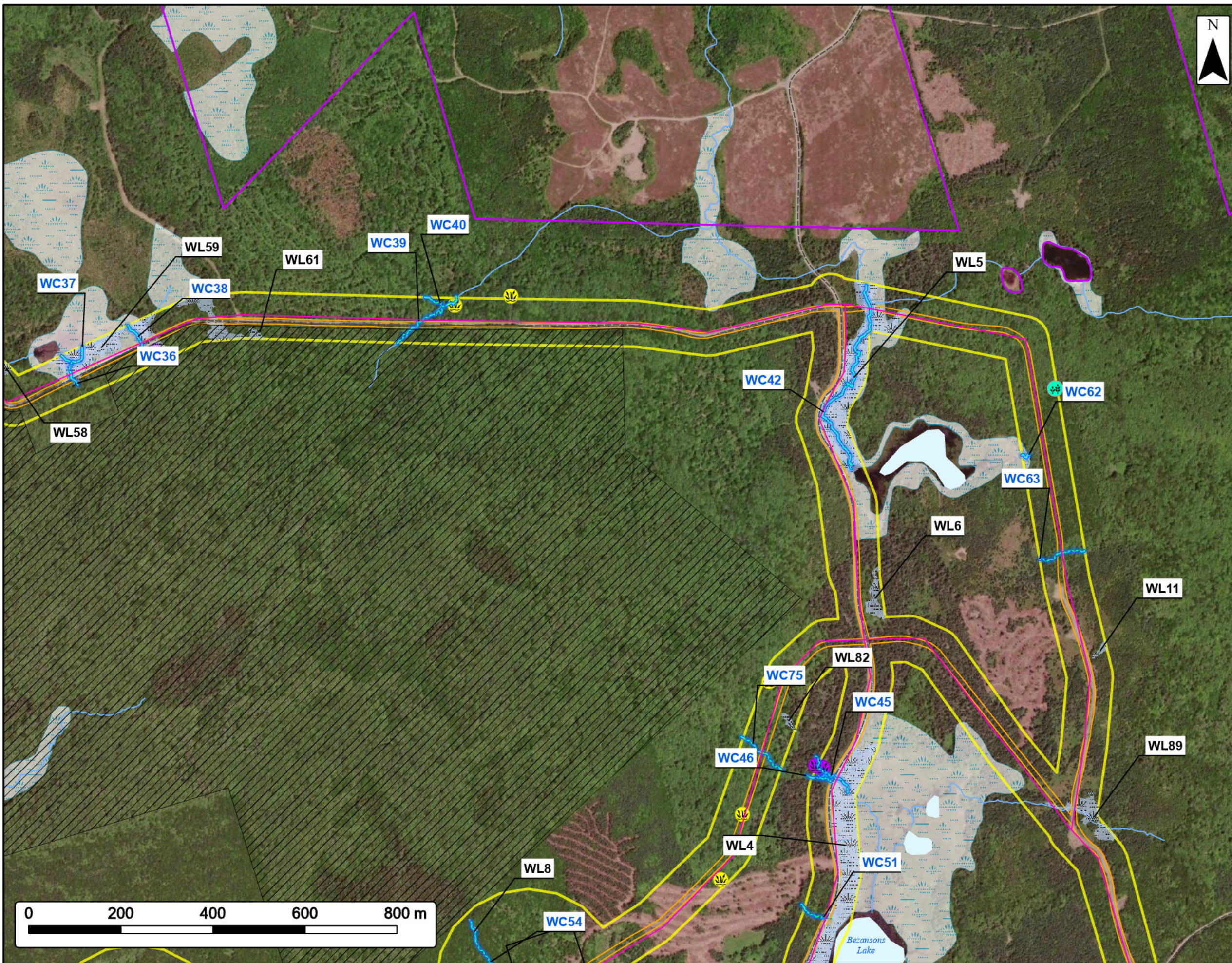
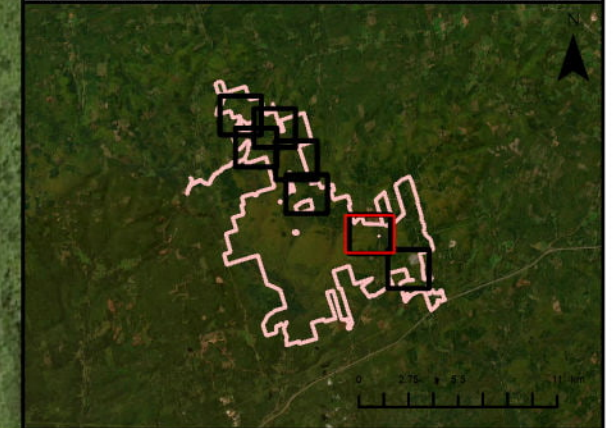
Clydesdale Ridge Wind Farm

Flora Field Results



Project Area		Transportation	
Study Area		Unpaved Road	
Road Footprint		Water Features	
Gully Lake Wilderness Area		NSECC Mapped Watercourses	
Turbine Pads		Mapped Lakes and Rivers	
Collector Line		Mapped Wet Areas	
Field Delineated Watercourse			
Field Delineated Wetland			
American Beech			
Large Purple Fringed Orchid			
Shaggy Fringed Lichen			

SAR species locations have been removed and are reported directly to NSECC



Coordinate System: NAD83 UTM Zone 20N		Sources: ESRI Basemaps, GeoNOVA, SNSIS, NSNRR, ACCDC, IBA Canada, CNWI, HERE, Garmin, USGS	
Date:	Jul 2024	Project #:	24-10018
Scale:	1:8,000	Drawing #:	12.8
Drawn By:	K. Wallace		
Checked By:	M. Juurlink		



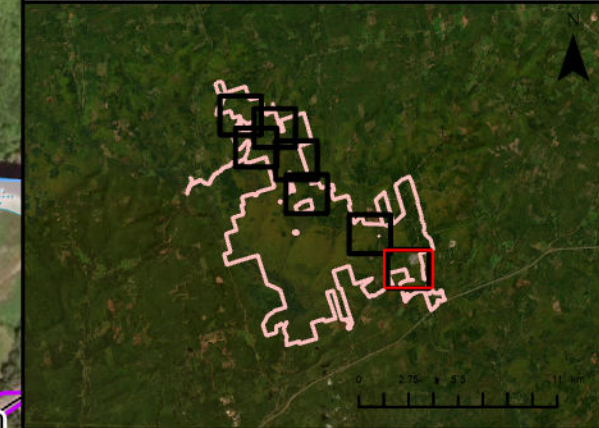
Clydesdale Ridge Wind Farm

Flora Field Results



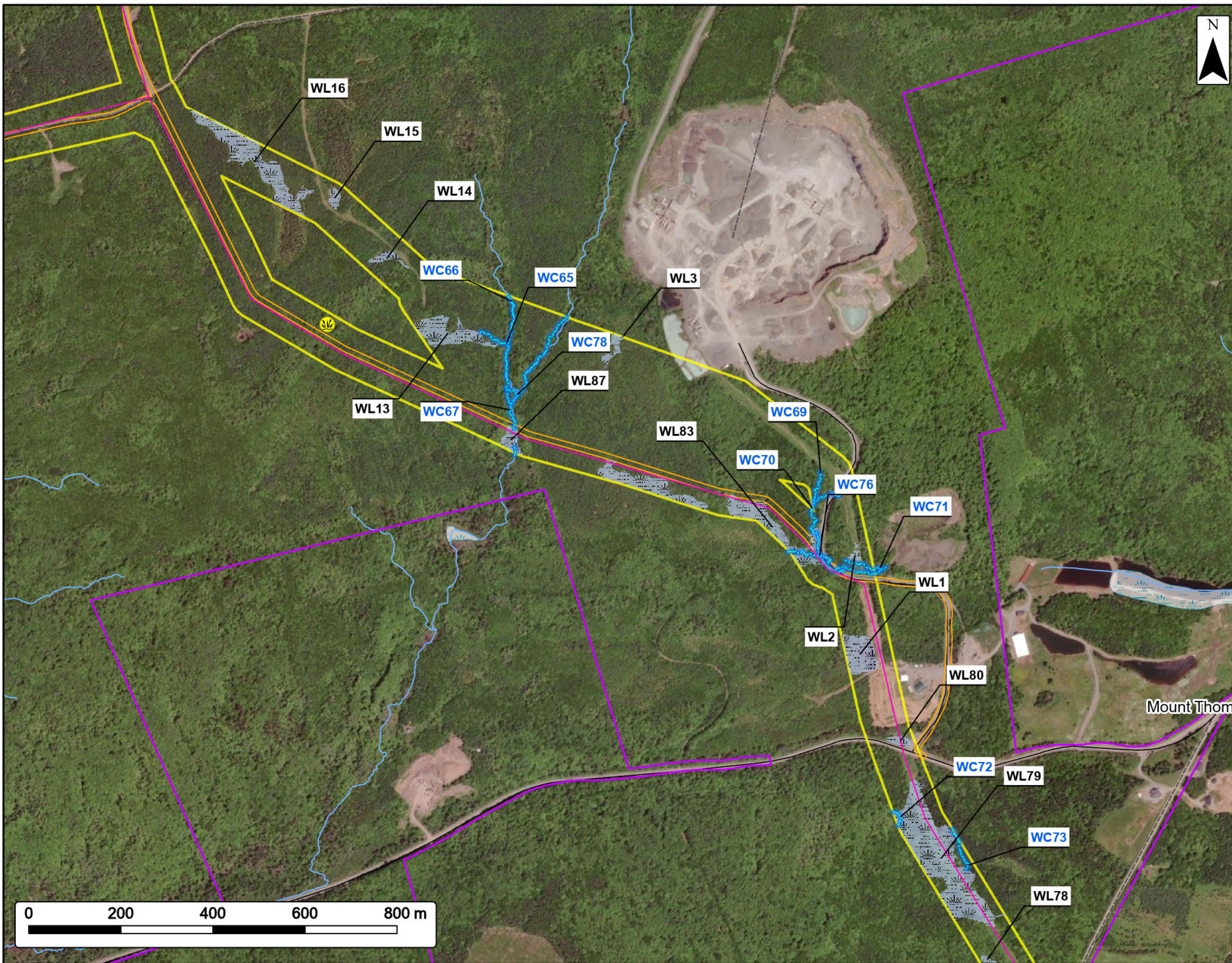
Project Area		Transportation
Study Area		Road
Road Footprint		Unpaved Road
Collector Line		Water Features
Field Delineated Watercourse		NSECC Mapped Watercourses
Field Delineated Wetland		Mapped Wet Areas
American Beech		

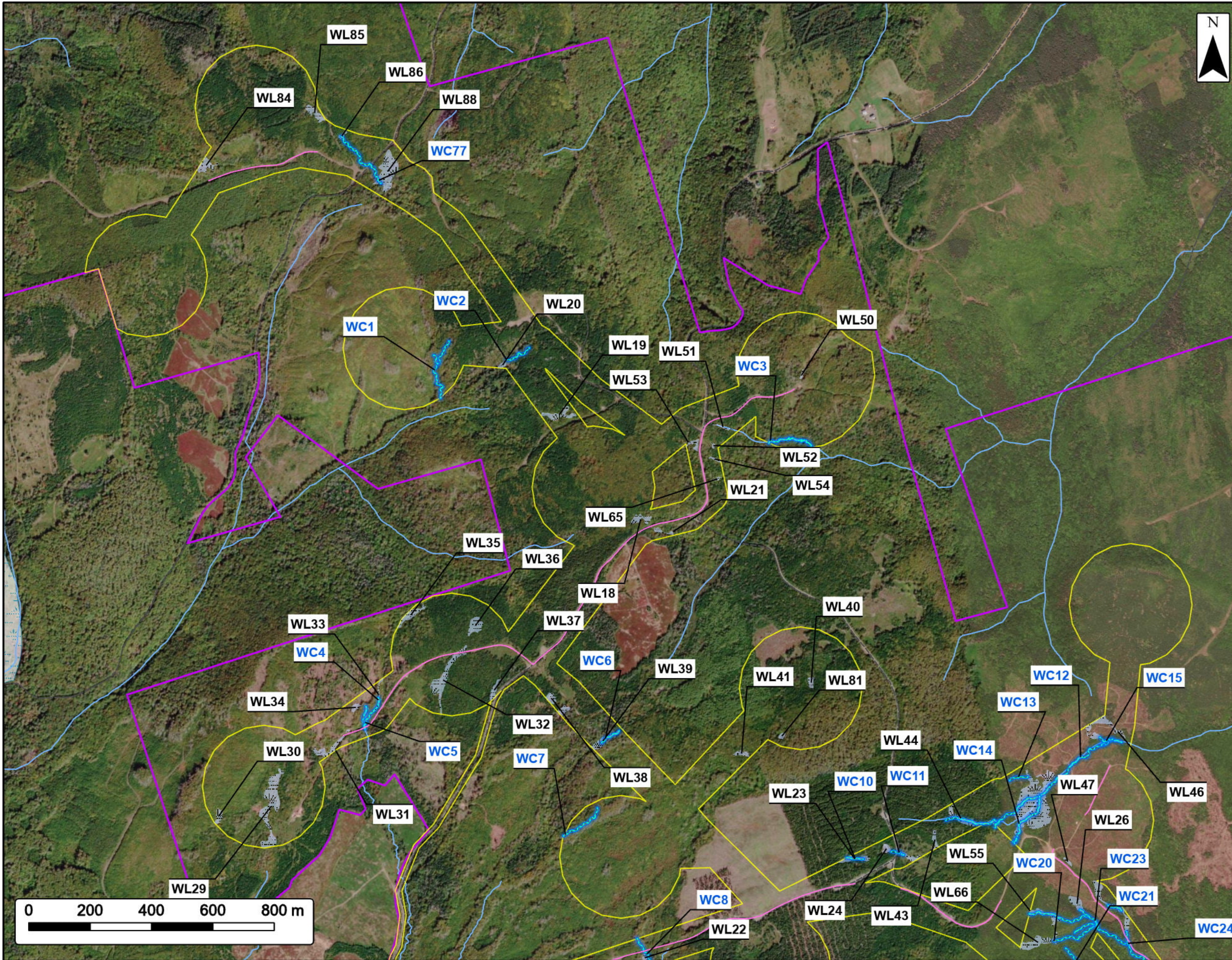
SAR species locations have been removed and are reported directly to NSECC



Coordinate System: NAD83 UTM Zone 20N
Sources: ESRI Basemaps, GeoNOVA, SNSIS, NSNRR, ACCDC, IBA Canada, CNWI, HERE, Garmin, USGS

Date:	Jul 2024	Project #:	24-10018
Scale:	1:8,000	Drawing #:	12.8
Drawn By:	K. Wallace		
Checked By:	M. Juurlink		



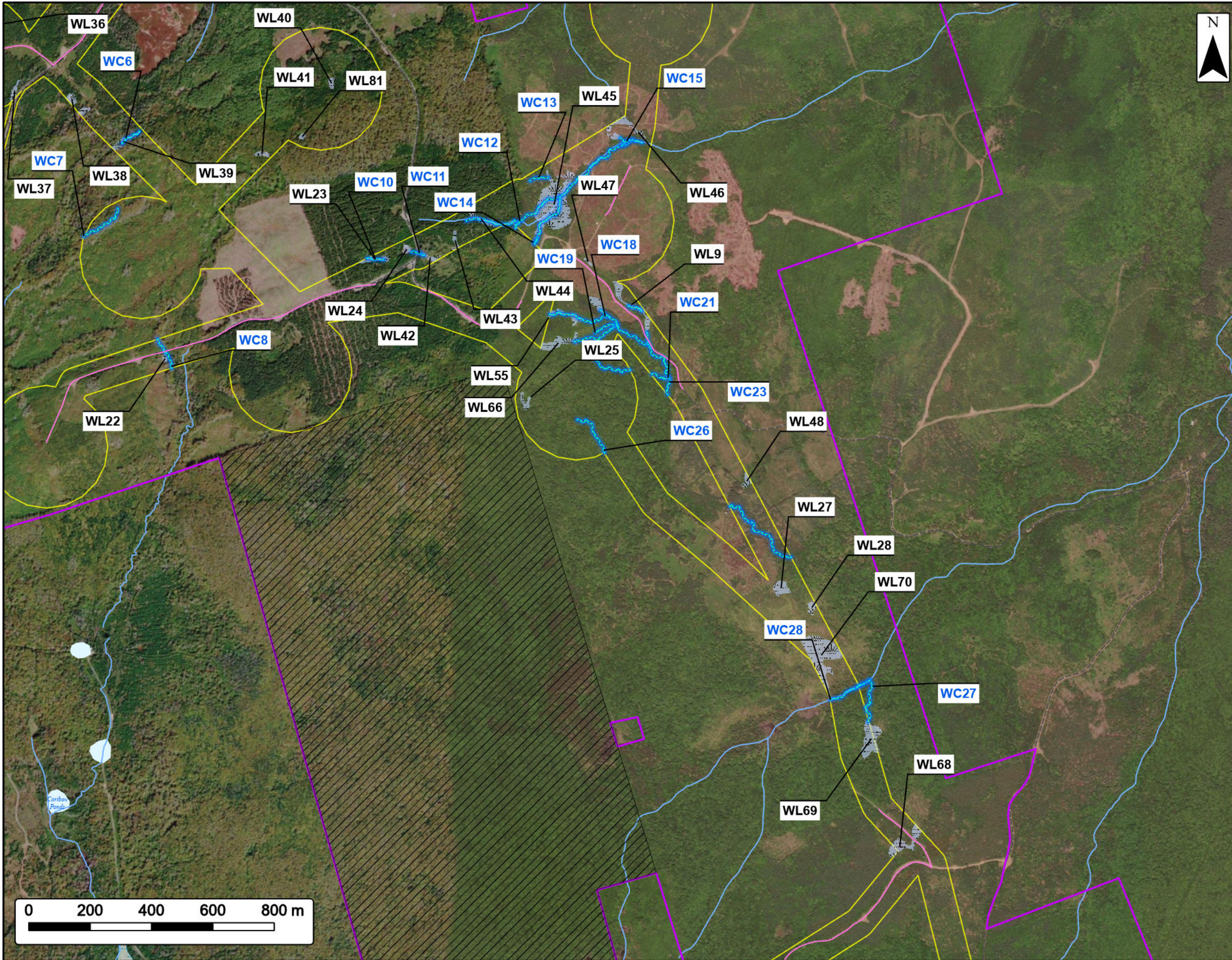


Clydesdale Ridge Wind Project

Wetland and Watercourse Delineation Results

Project Area	
Study Area	
Option A - Existing Road to be Upgraded	
Field Delineated Watercourse	
Field Delineated Wetland	
Transportation	
Unpaved Road	
Water Features	
NSECC Mapped Watercourses	
Mapped Wetlands	

Coordinate System: NAD83 UTM Zone 20N		Sources: ESRI Basemaps, GeoNOVA, SNSIS, NSNRR, ACCDC, IBA Canada, CNWI, HERE, Garmin, USGS	
Date:	Jul 2024	Project #:	24-10018
Scale:	1:12,000	Drawing #:	12.9
Drawn By:	K. Wallace		
Checked By:	M. Juurlink		

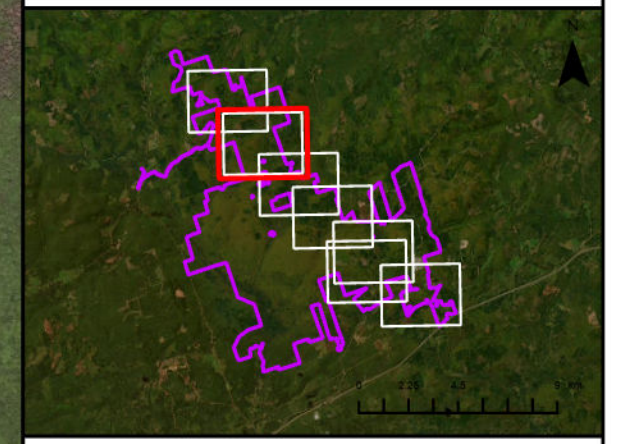


Clydesdale Ridge Wind Project

Wetland and Watercourse Delineation Results

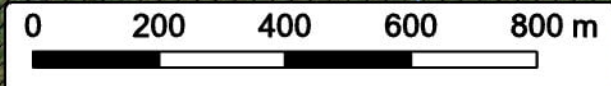
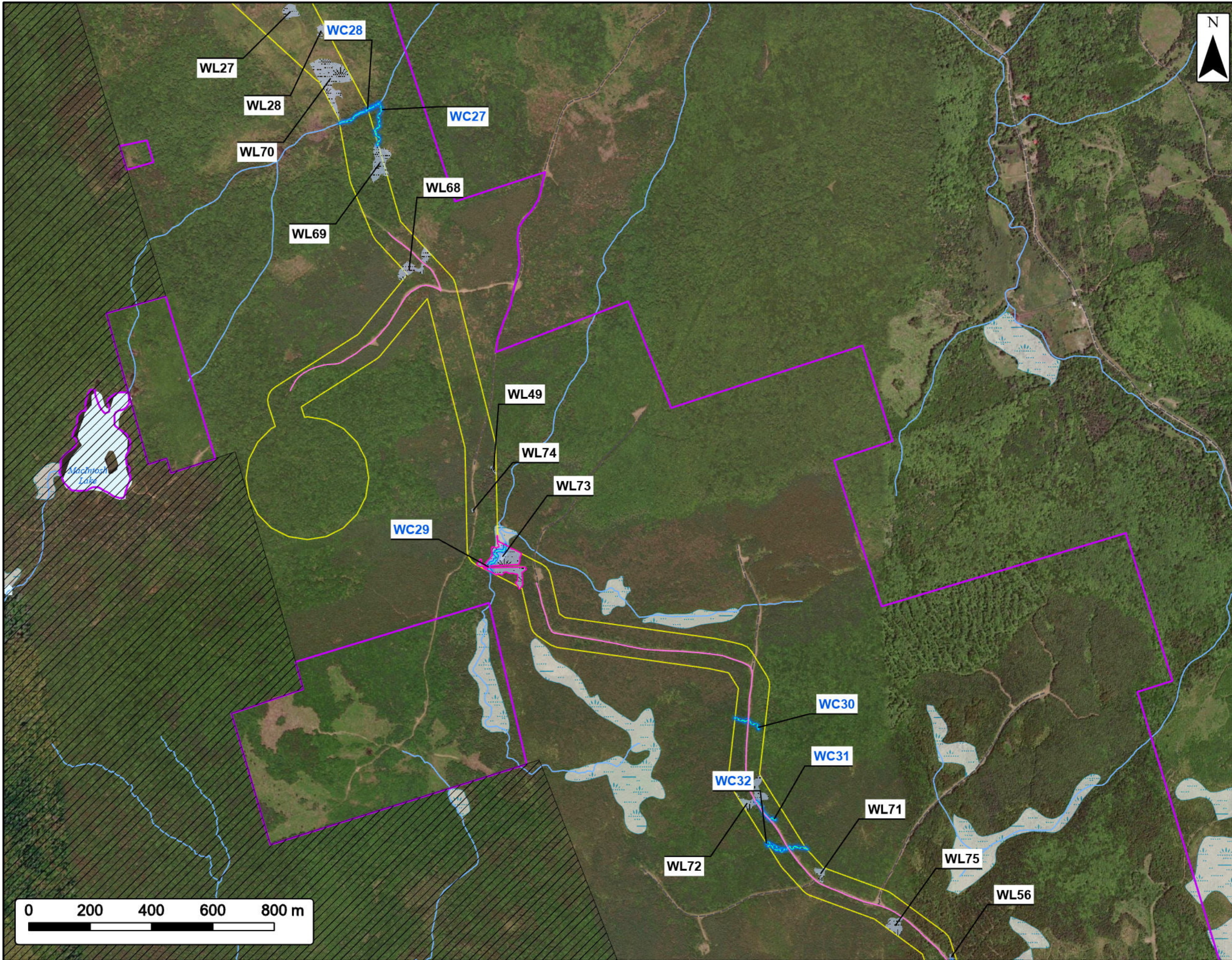


Project Area	
Study Area	
Option A - Existing Road to be Upgraded	
Gully Lake Wilderness Area	
Field Delineated Watercourse	
Field Delineated Wetland	
Transportation	
Unpaved Road	
Water Features	
NSECC Mapped Watercourses	
Mapped Lakes and Rivers	
Mapped Wetlands	



Coordinate System: NAD83 UTM Zone 20N		Sources: ESRI Basemaps, GeoNOVA, SNSIS, NSNRR, ACCDC, IBA Canada, CNWI, HERE, Garmin, USGS	
Date:	Jul 2024	Project #:	24-10018
Scale:	1:12,000	Drawing #:	12.9
Drawn By:	K. Wallace		
Checked By:	M. Juurlink		



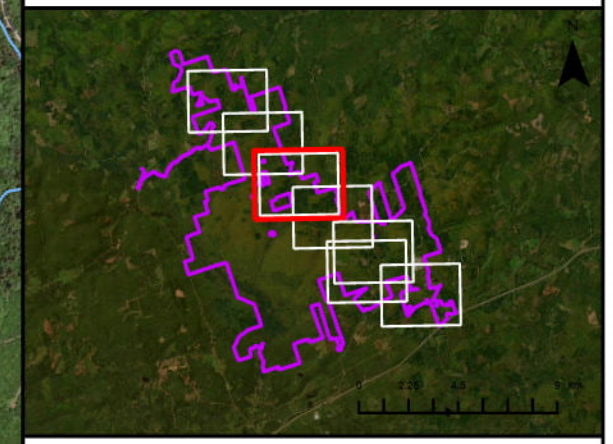


Clydesdale Ridge Wind Project

Wetland and Watercourse Delineation Results

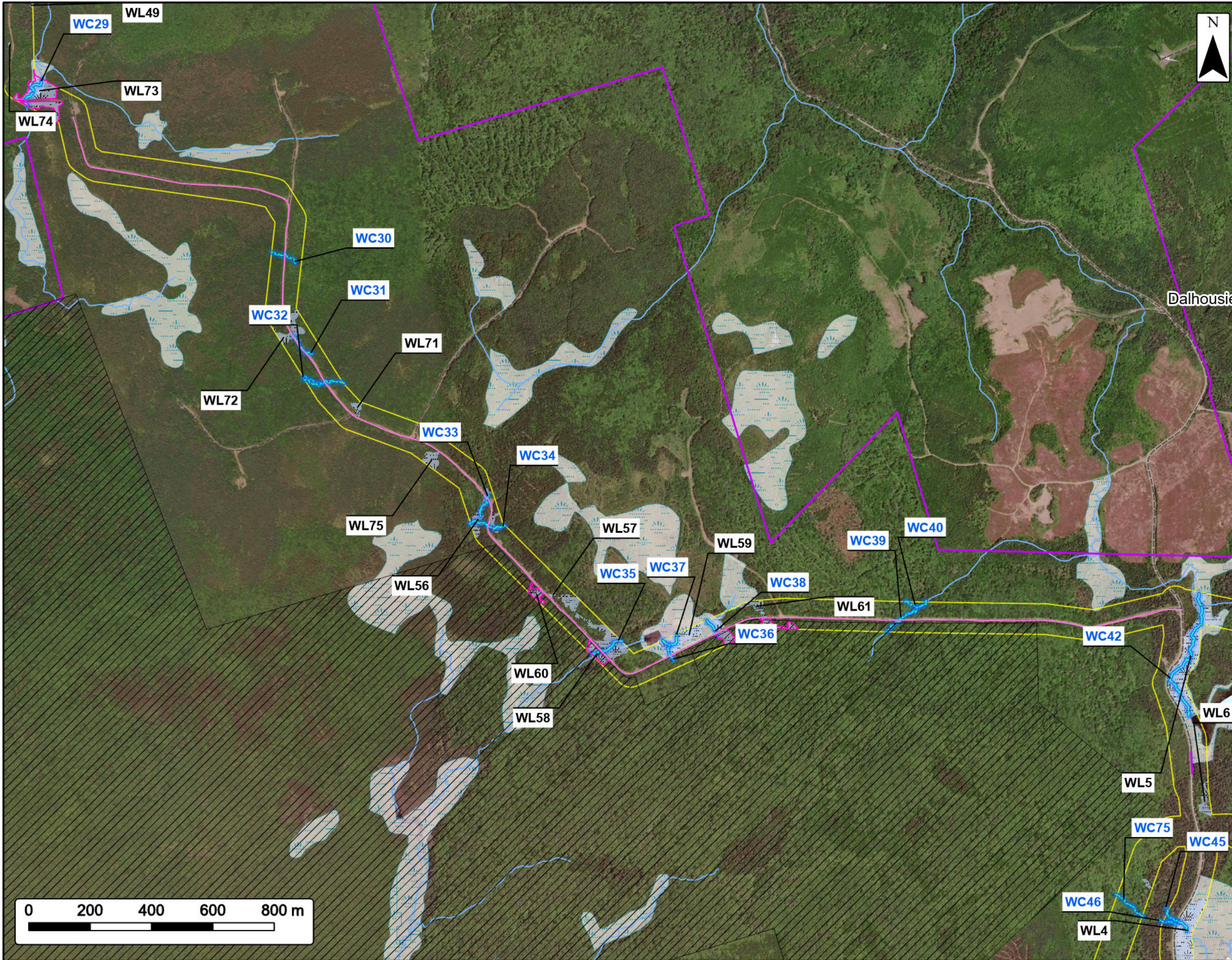


Project Area	
Study Area	
Option A - Existing Road to be Upgraded	
Wetland of Special Significance	
Gully Lake Wilderness Area	
Field Delineated Watercourse	
Field Delineated Wetland	
Transportation	
Unpaved Road	
Water Features	
NSECC Mapped Watercourses	
Mapped Lakes and Rivers	
Mapped Wetlands	



Coordinate System: NAD83 UTM Zone 20N		Sources: ESRI Basemaps, GeoNOVA, SNSIS, NSNRR, ACCDC, IBA Canada, CNWI, HERE, Garmin, USGS	
Date:	Jul 2024	Project #:	24-10018
Scale:	1:12,000	Drawing #:	12.9
Drawn By:	K. Wallace		
Checked By:	M. Juurlink		



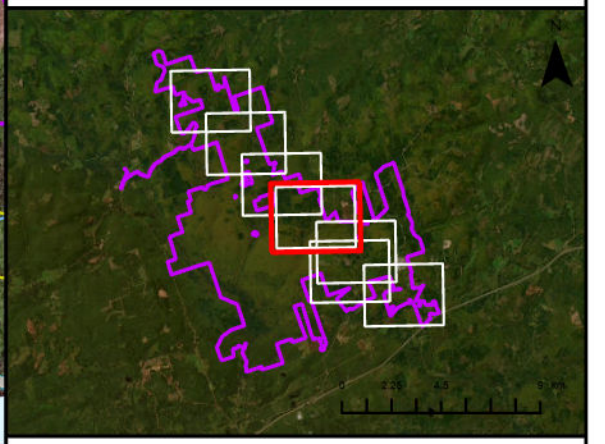


Clydesdale Ridge Wind Project

Wetland and Watercourse Delineation Results



Project Area	
Study Area	
Option A - Existing Road to be Upgraded	
Wetland of Special Significance	
Gully Lake Wilderness Area	
Field Delineated Watercourse	
Field Delineated Wetland	
Transportation	
Unpaved Road	
Water Features	
NSECC Mapped Watercourses	
Mapped Lakes and Rivers	
Mapped Wetlands	



Date: Jul 2024		Project #: 24-10018	
Scale: 1:12,000		Drawing #: 12.9	
Drawn By: K. Wallace			
Checked By: M. Juurlink			



Coordinate System: NAD83 UTM Zone 20N
Sources: ESRI Basemaps, GeoNOVA, SNSIS, NSNRR, ACCDC, IBA Canada, CNWI, HERE, Garmin, USGS

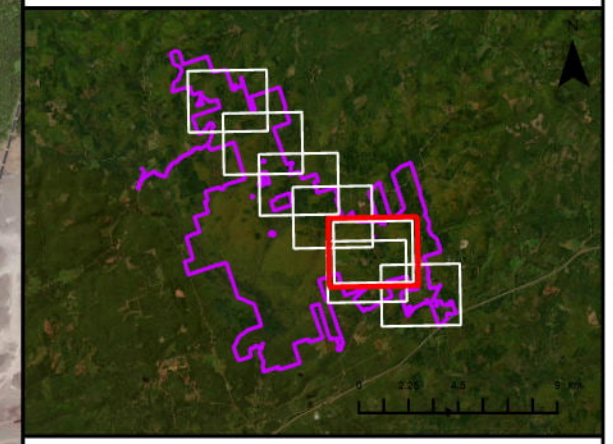


Clydesdale Ridge Wind Project

Wetland and Watercourse Delineation Results

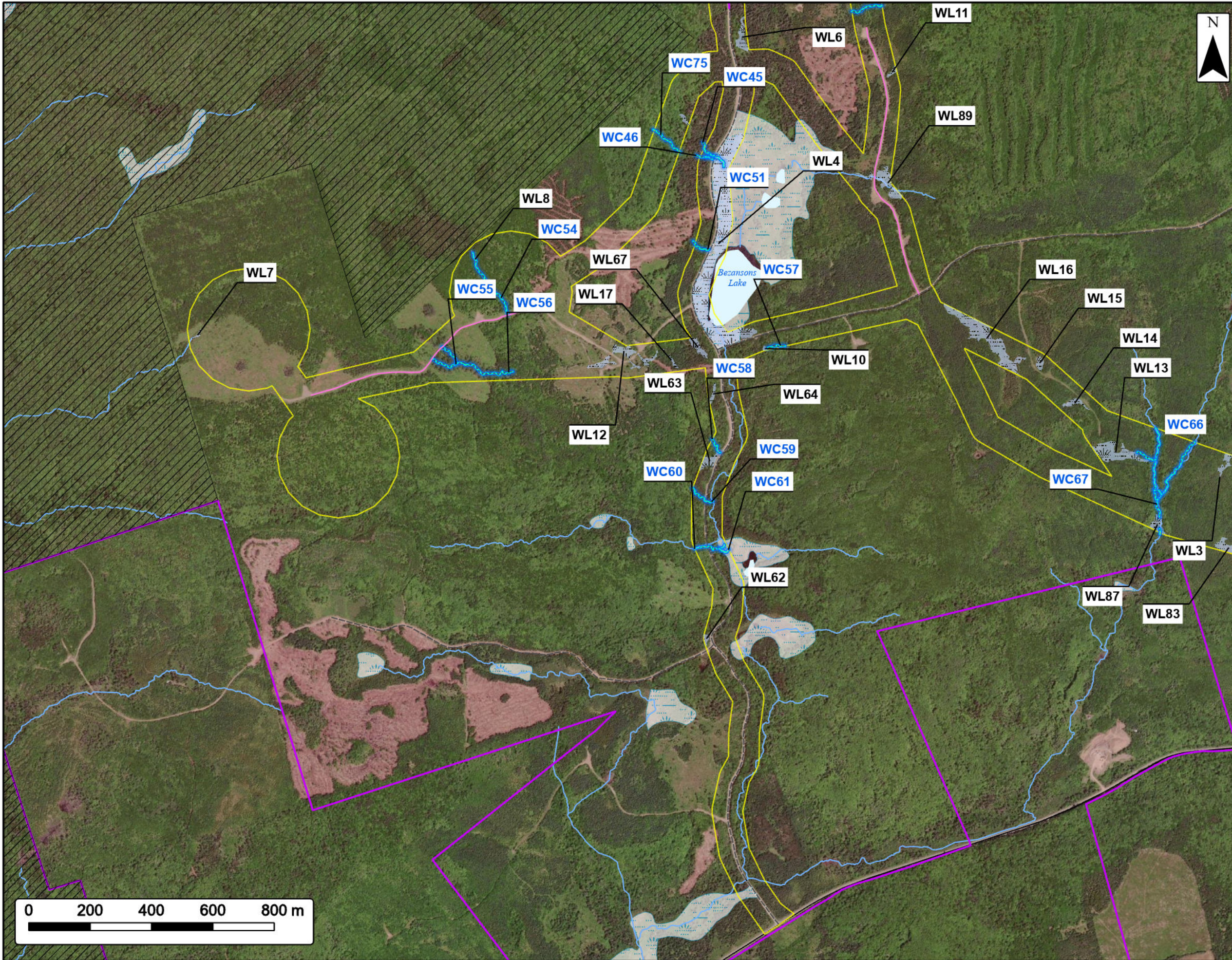


Project Area	
Study Area	
Option A - Existing Road to be Upgraded	
Wetland of Special Significance	
Gully Lake Wilderness Area	
Field Delineated Watercourse	
Field Delineated Wetland	
Transportation	
Road	
Unpaved Road	
Water Features	
NSECC Mapped Watercourses	
Mapped Lakes and Rivers	
Mapped Wetlands	



Coordinate System: NAD83 UTM Zone 20N		Sources: ESRI Basemaps, GeoNOVA, SNSIS, NSNRR, ACCDC, IBA Canada, CNWI, HERE, Garmin, USGS	
Date:	Jul 2024	Project #:	24-10018
Scale:	1:12,000	Drawing #:	12.9
Drawn By:	K. Wallace		
Checked By:	M. Juurlink		





Clydesdale Ridge Wind Project

Wetland and Watercourse Delineation Results

Project Area	
Study Area	
Option A - Existing Road to be Upgraded	
Gully Lake Wilderness Area	
Field Delineated Watercourse	
Field Delineated Wetland	
Transportation	
Road	
Unpaved Road	
Water Features	
NSECC Mapped Watercourses	
Mapped Lakes and Rivers	
Mapped Wetlands	

Coordinate System: NAD83 UTM Zone 20N		Sources: ESRI Basemaps, GeoNOVA, SNSIS, NSNRR, ACCDC, IBA Canada, CNWI, HERE, Garmin, USGS	
Date:	Jul 2024	Project #:	24-10018
Scale:	1:12,000	Drawing #:	12.9
Drawn By:	K. Wallace		
Checked By:	M. Juurlink		