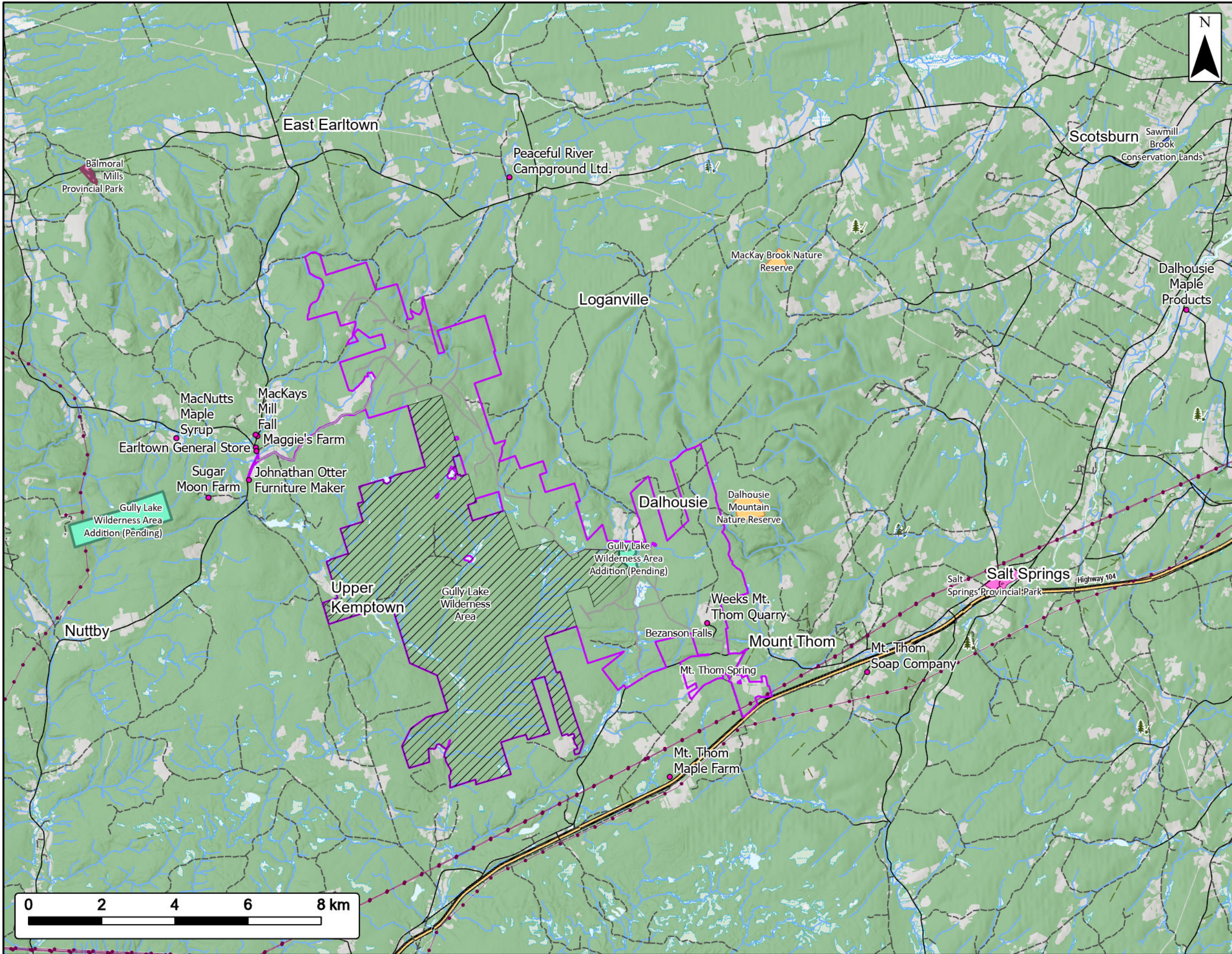


Clydesdale Ridge Wind Project

Wetland and Watercourse Delineation Results

Project Area	
Study Area	
Field Delineated Watercourse	
Field Delineated Wetland	
Utilities (line)	
Existing Transmission Lines	
Transportation	
Trans-Canada Highway	
Road	
Unpaved Road	
Water Features	
NSECC Mapped Watercourses	
Mapped Lakes and Rivers	
Mapped Wetlands	

Coordinate System: NAD83 UTM Zone 20N		Sources: ESRI Basemaps, GeoNOVA, SNSIS, NSNRR, ACCDC, IBA Canada, CNWI, HERE, Garmin, USGS	
Date:	Jul 2024	Project #:	24-10018
Scale:	1:12,000	Drawing #:	12.9
Drawn By:	K. Wallace		
Checked By:	M. Juurlink		



Clydesdale Ridge Wind Project

Local Businesses

Project Area

Project Infrastructure

Local Businesses

Type of Existing Protection

- Nature Reserve
- Land Trust or Conservation Easement
- Provincial Park
- Gully Lake Wilderness Area

Type of Pending or Proposed Protection

- Wilderness Area
- Provincial Park

Utilities (line)

- Existing Transmission Lines

Transportation

- Trans-Canada Highway
- Road
- Unpaved Road

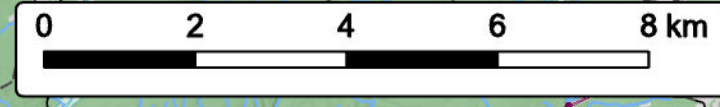
Water Features

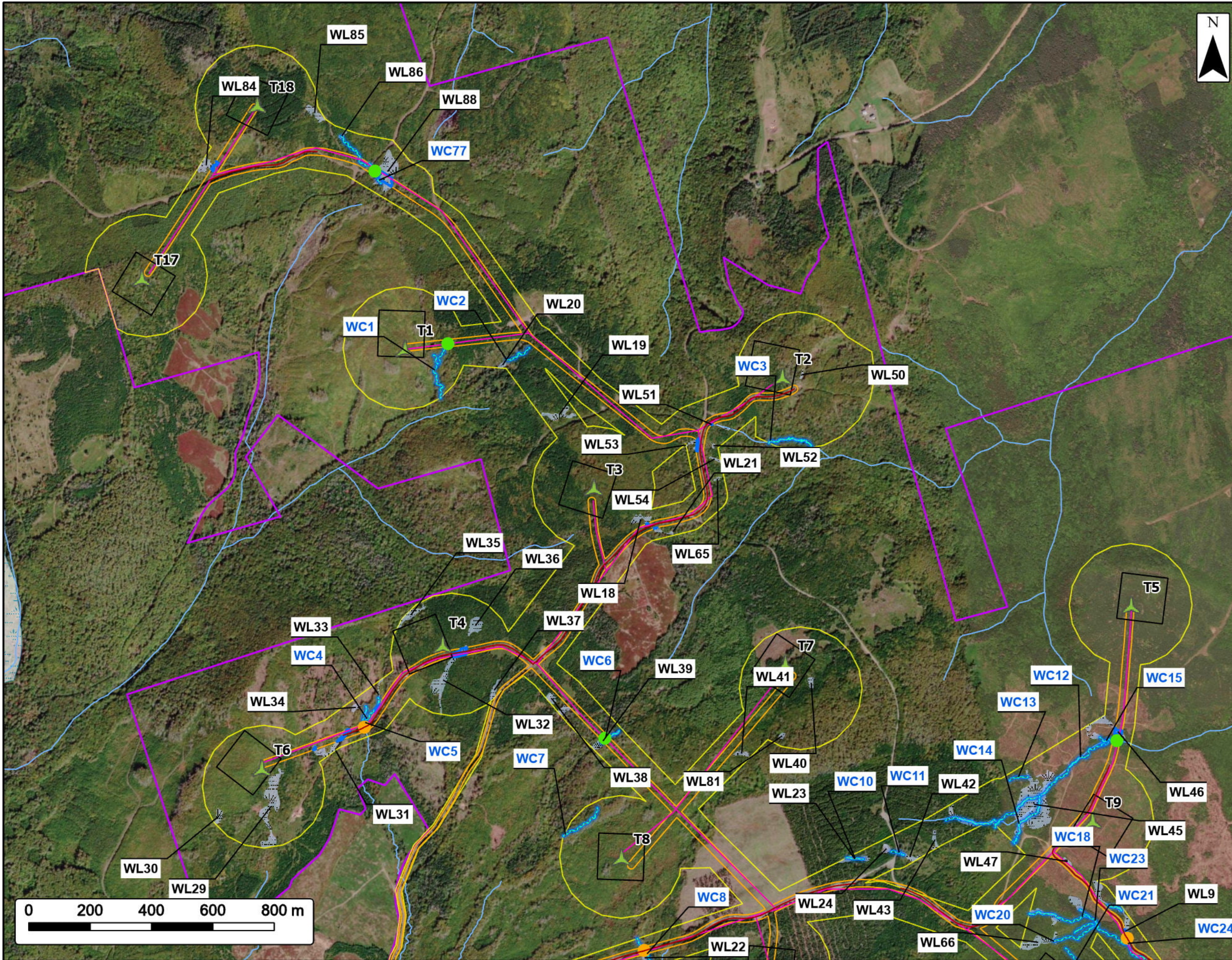
- NSECC Mapped Watercourses
- Mapped Lakes and Rivers
- Mapped Wet Areas



Coordinate System: NAD83 UTM Zone 20N Sources: ESRI Basemaps, GeoNOVA, SNSIS, NSNRR, ACCDC, IBA Canada, CNWI, HERE, Garmin, USGS

Date:	Jul 2024	Project #:	24-10018
Scale:	1:100,000	Drawing #:	12.10
Drawn By:	K. Wallace		
Checked By:	M. Juurlink		





Clydesdale Ridge Wind Project

Wetland and Watercourse Impacts

Project Area [Pink outline]

Study Area [Yellow outline]

Proposed Turbine Location [Green triangle]

Road Footprint [Yellow rectangle]

Turbine Pads [Black rectangle]

Collector Line [Pink line]

Option A - Existing Road to be Upgraded [Red line]

Field Delineated Watercourse [Blue line]

Field Delineated Wetland [Light blue area]

Wetland Impacts [Dark blue area]

Proposed Road Crossing

New [Green circle]

Upgrade [Orange circle]

Water Features

Mapped Watercourses [Light blue line]

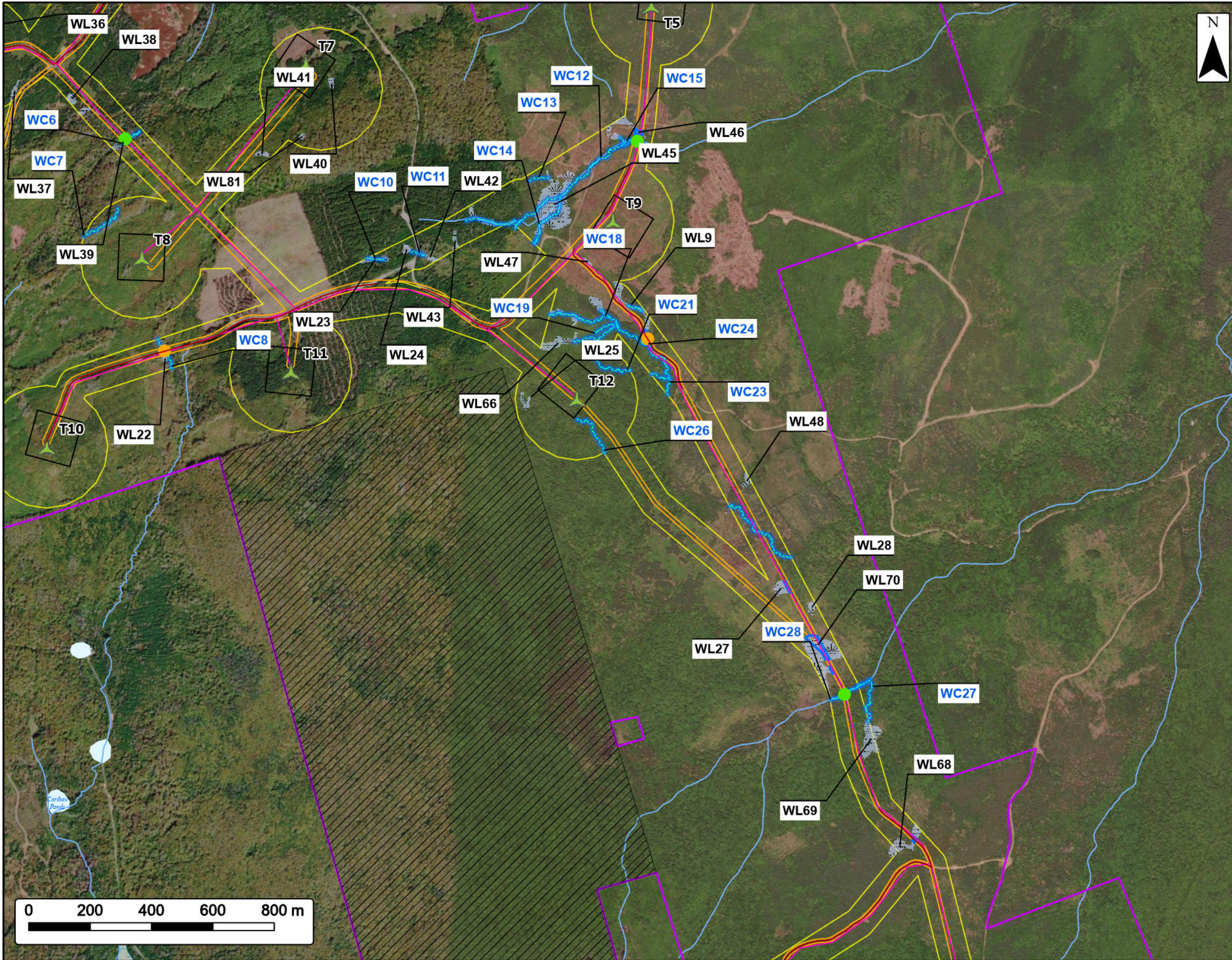
Mapped Wetlands [Light blue area]

Coordinate System: NAD83 UTM Zone 20N

Sources: ESRI Basemaps, GeoNOVA, SNSIS, NSNRR, ACCDC, IBA Canada, CNWI, HERE, Garmin, USGS

Date: Jul 2024	Project #: 24-10018
Scale: 1:12,000	Drawing #: 13.1
Drawn By: K. Wallace	13.1
Checked By: M. Juurlink	

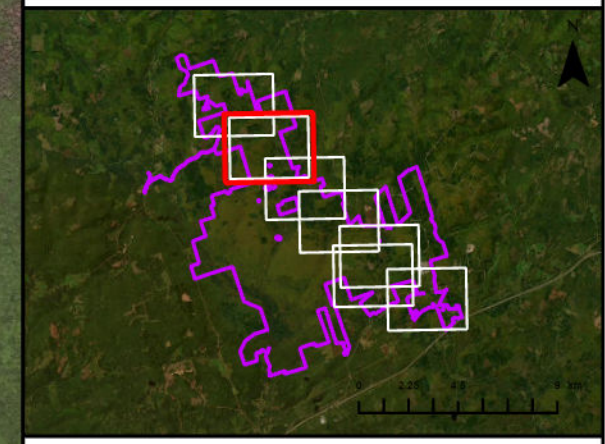
CONSULTING



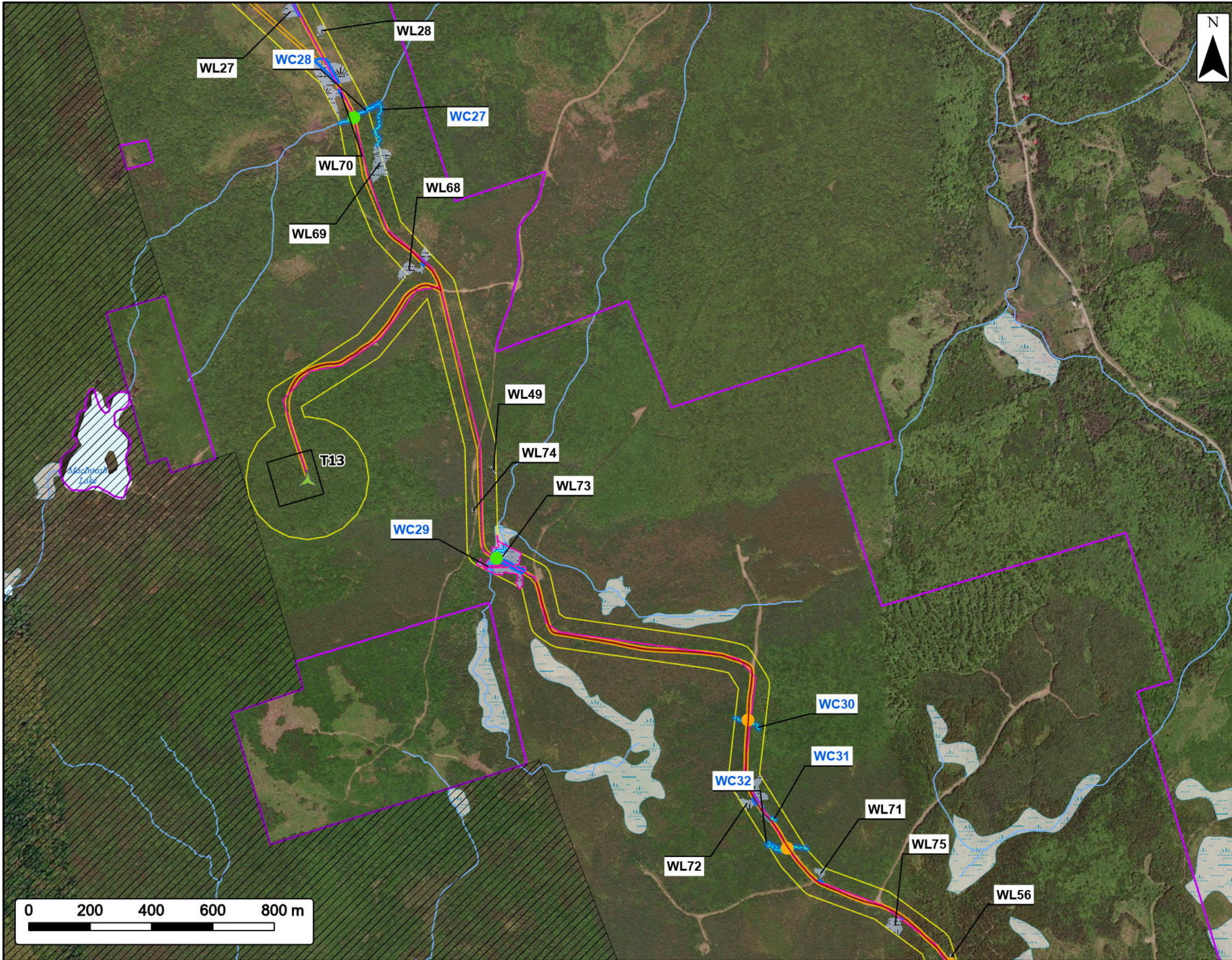
Clydesdale Ridge Wind Project

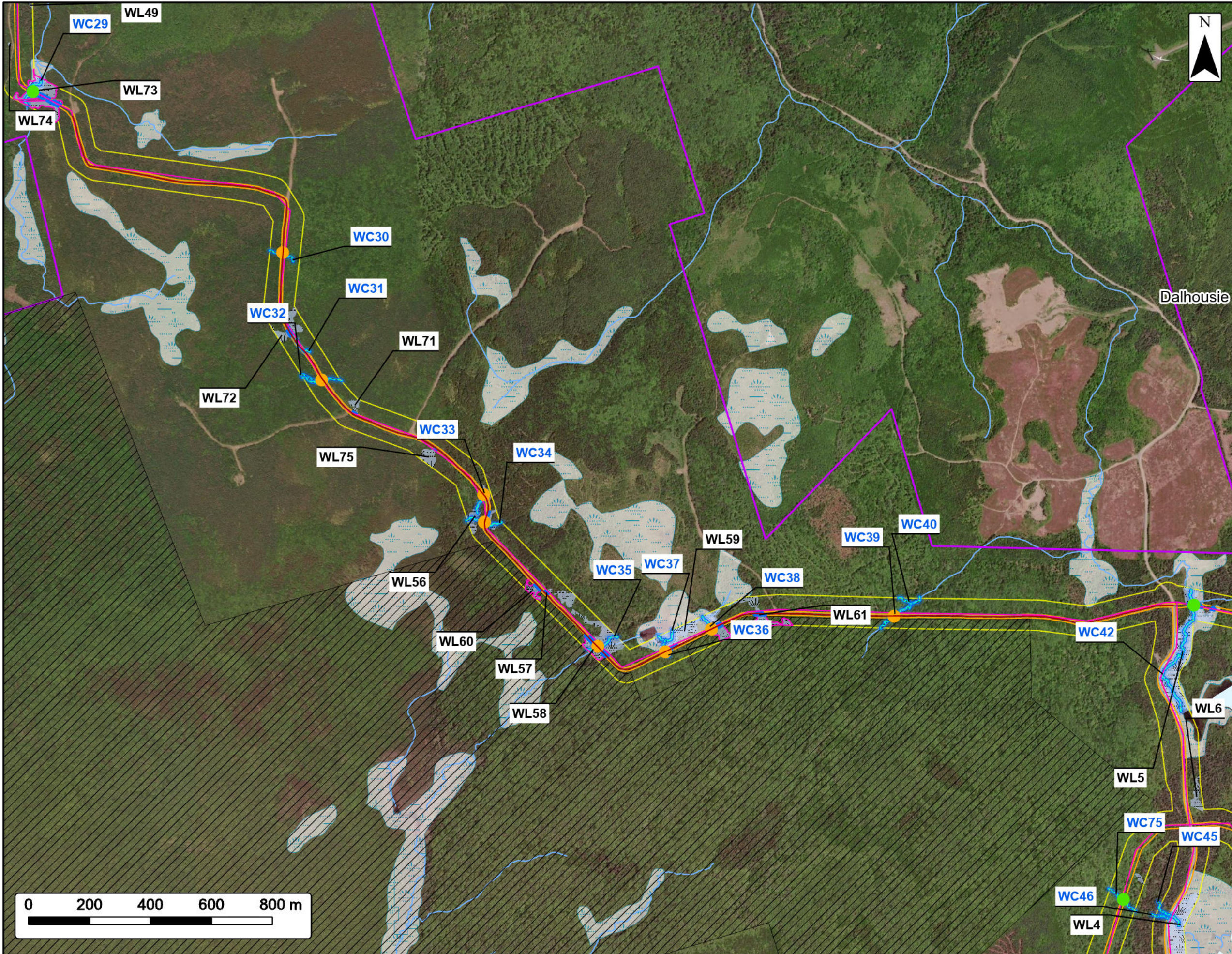
Wetland and Watercourse Impacts

Project Area	
Study Area	
Proposed Turbine Location	
Road Footprint	
Gully Lake Wilderness Area	
Turbine Pads	
Collector Line	
Option A - Existing Road to be Upgraded	
Field Delineated Watercourse	
Field Delineated Wetland	
Wetland Impacts	
Proposed Road Crossing	
New	
Upgrade	
Water Features	
Mapped Watercourses	
Mapped Lakes and Rivers	
Mapped Wetlands	



Coordinate System: NAD83 UTM Zone 20N		Sources: ESRI Basemaps, GeoNOVA, SNSIS, NSNRR, ACCDC, IBA Canada, CNWI, HERE, Garmin, USGS	
Date: Jul 2024	Project #: 24-10018		
Scale: 1:12,000	Drawing #: 13.1		
Drawn By: K. Wallace			
Checked By: M. Juurlink			



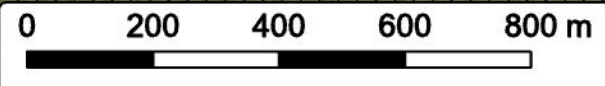
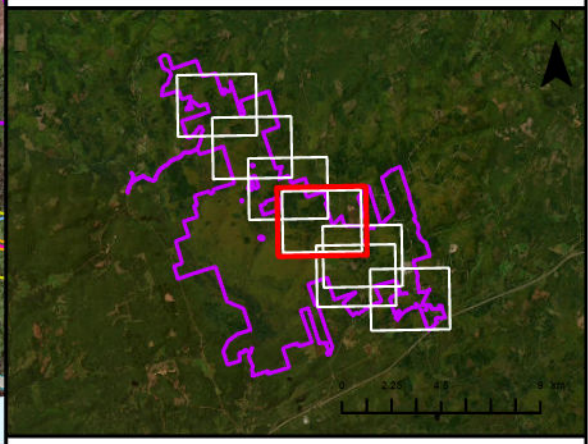


Clydesdale Ridge Wind Project
Wetland and Watercourse Impacts



Project Area	
Study Area	
Road Footprint	
Gully Lake Wilderness Area	
Collector Line	
Option A - Existing Road to be Upgraded	
Field Delineated Watercourse	
Field Delineated Wetland	
Wetland Impacts	
Wetland of Special Significance	
Proposed Road Crossing	
New	
Upgrade	
Water Features	
Mapped Watercourses	
Mapped Lakes and Rivers	
Mapped Wetlands	

Dalhousie



Coordinate System: NAD83 UTM Zone 20N		Sources: ESRI Basemaps, GeoNOVA, SNSIS, NSNRR, ACCDC, IBA Canada, CNWI, HERE, Garmin, USGS	
Date:	Jul 2024	Project #:	24-10018
Scale:	1:12,000	Drawing #:	13.1
Drawn By:	K. Wallace		
Checked By:	M. Juurlink		



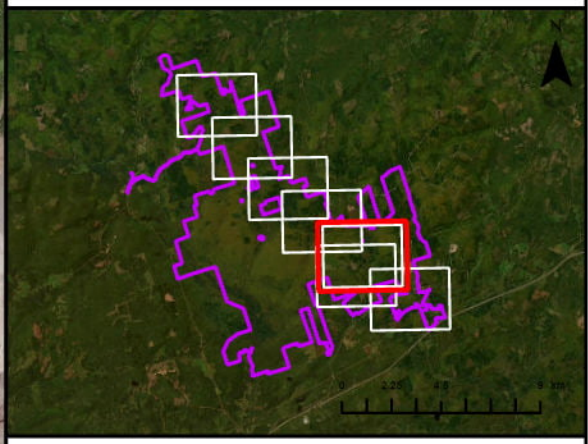


Clydesdale Ridge Wind Project

Wetland and Watercourse Impacts

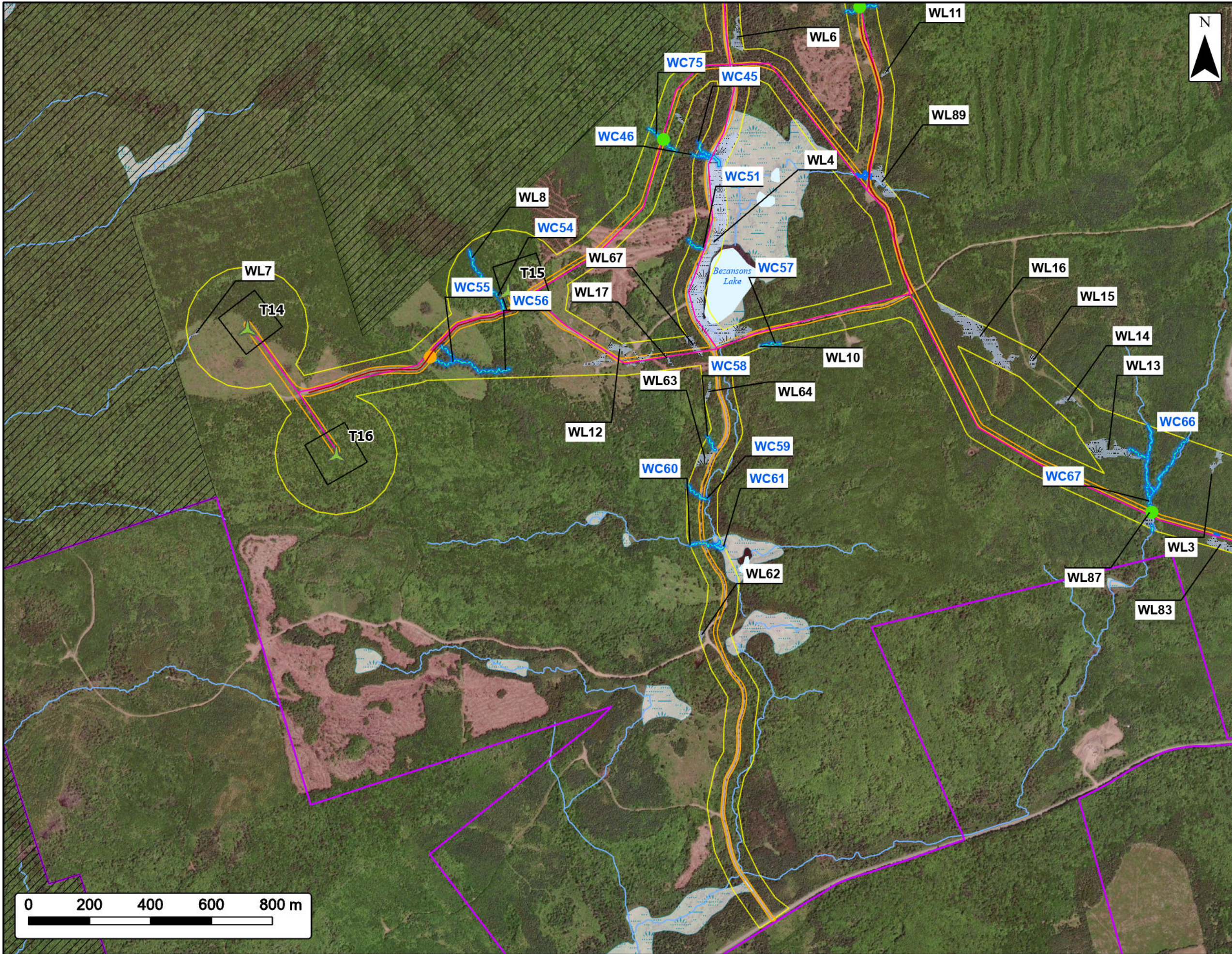
Legend:

- Project Area: Purple outline
- Study Area: Yellow outline
- Proposed Turbine Location: Green triangle
- Road Footprint: Yellow rectangle
- Gully Lake Wilderness Area: Diagonal hatching
- Turbine Pads: White rectangle
- Collector Line: Pink line
- Option A - Existing Road to be Upgraded: Red line
- Field Delineated Watercourse: Blue line with wavy pattern
- Field Delineated Wetland: Blue line with wavy pattern
- Wetland Impacts: Blue outline
- Wetland of Special Significance: Pink outline
- Proposed Road Crossing**
- New: Green circle
- Upgrade: Orange circle
- Water Features**
- Mapped Watercourses: Blue line
- Mapped Lakes and Rivers: Light blue area



Coordinate System: NAD83 UTM Zone 20N
Sources: ESRI Basemaps, GeoNOVA, SNSIS, NSNRR, ACCDC, IBA Canada, CNWI, HERE, Garmin, USGS

Date:	Jul 2024	Project #:	24-10018
Scale:	1:12,000	Drawing #:	13.1
Drawn By:	K. Wallace		
Checked By:	M. Juurlink		

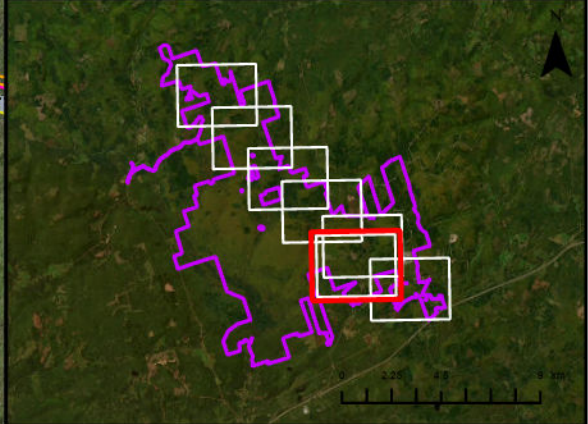


Clydesdale Ridge Wind Project

Wetland and Watercourse Impacts



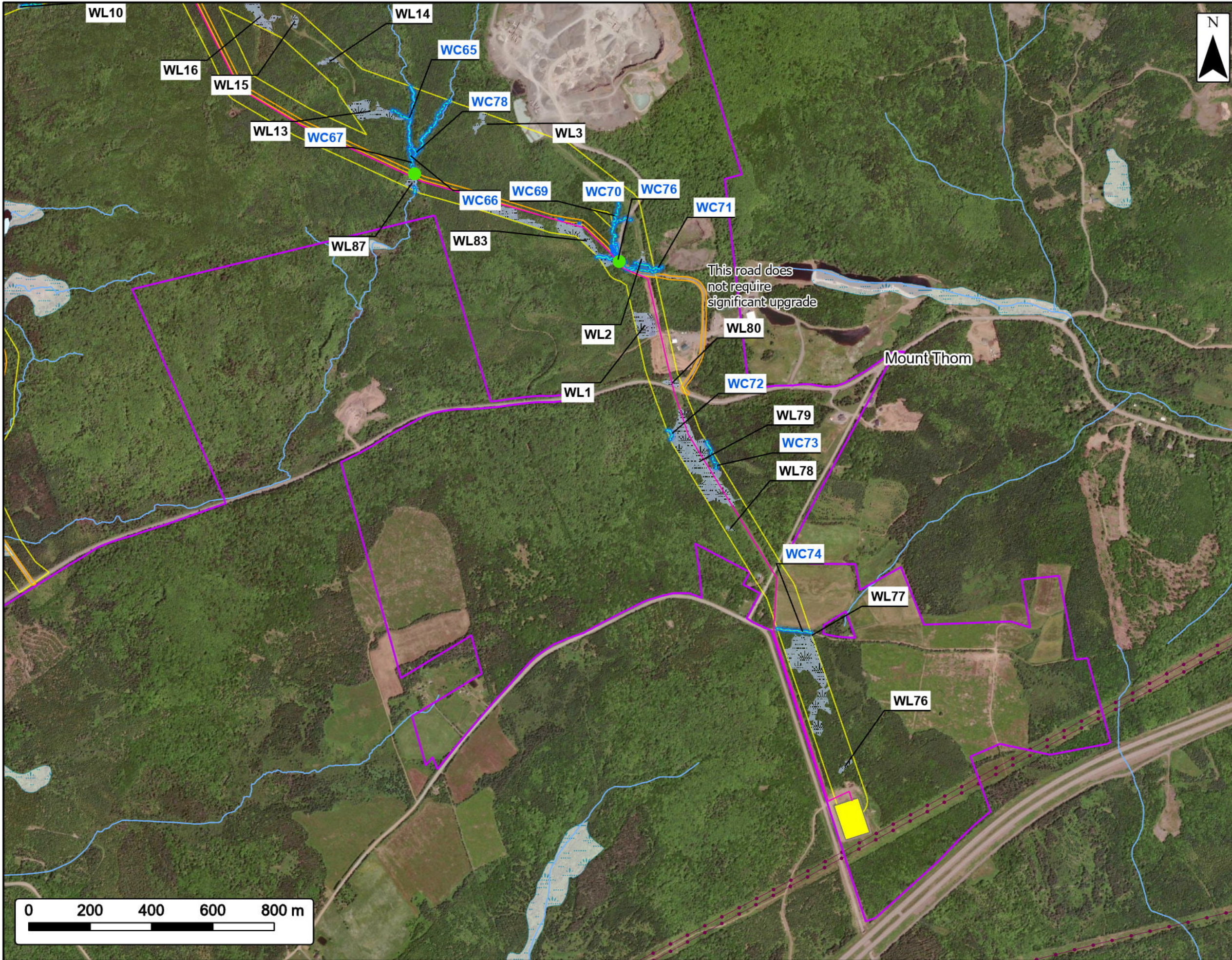
- Project Area
- Study Area
- Proposed Turbine Location
- Road Footprint
- Gully Lake Wilderness Area
- Turbine Pads
- Collector Line
- Option A - Existing Road to be Upgraded
- Field Delineated Watercourse
- Field Delineated Wetland
- Wetland Impacts
- Proposed Road Crossing
- New
- Upgrade
- Water Features
- Mapped Watercourses
- Mapped Lakes and Rivers
- Mapped Wetlands



Coordinate System: NAD83 UTM Zone 20N Sources: ESRI Basemaps, GeoNOVA, SNSIS, NSNRR, ACCDC, IBA Canada, CNWI, HERE, Garmin, USGS


Date:	Jul 2024	Project #:	24-10018
Scale:	1:12,000	Drawing #:	13.1
Drawn By:	K. Wallace		
Checked By:	M. Juurlink		





Clydesdale Ridge Wind Project

Wetland and Watercourse Impacts



Project Area —

Study Area —

Road Footprint —

Collector Line —

Existing Substation ■

Field Delineated Watercourse —

Field Delineated Wetland —

Wetland Impacts —

Proposed Road Crossing

New ●

Utilities (line)


Existing Transmission Lines —

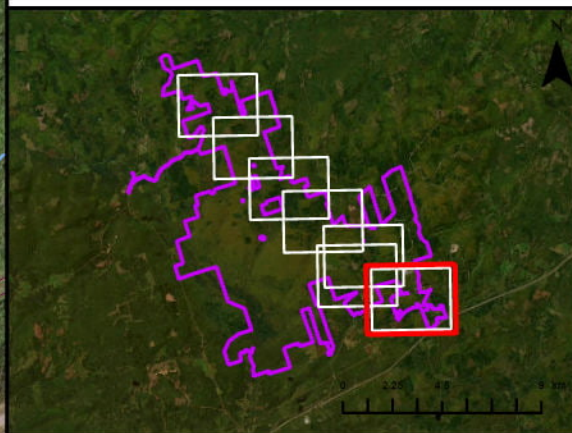
Water Features

Mapped Watercourses —

Mapped Lakes and Rivers —

Mapped Wetlands —





Coordinate System: NAD83 UTM Zone 20N

Sources: ESRI Basemaps, GeoNOVA, SNSIS, NSNRR, ACCDC, IBA Canada, CNWI, HERE, Garmin, USGS

Date: Jul 2024	Project #: 24-10018
Scale: 1:12,000	Drawing #: 13.1
Drawn By: K. Wallace	13.1
Checked By: M. Juurlink	

