

APPENDIX A
ENVIRONMENTAL PROTECTION PLAN – TABLE OF CONTENTS

TABLE OF CONTENTS

	Page
1.0 INTRODUCTION	1
2.0 ENVIRONMENTAL PROTECTION PLAN OVERVIEW	1
2.1 Scope of the Environmental Protection Plan	1
2.1.1 Timing and Constraints	1
2.1.2 Unforeseen Circumstances	1
2.2 Organization and Use of the Environmental Protection Plan	1
2.3 Maintenance of the Environmental Protection Plan	1
3.0 RESPONSIBILITIES & Training	1
3.1 Roles & Responsibilities	1
3.1.1 Project Manager	1
3.1.2 Construction Manager	1
3.1.3 Environmental Monitor	1
3.1.4 Other Personnel	1
3.2 Training & Orientation Requirements	1
3.2.1 Records	1
3.3 Complaint Response Protocol	1
4.0 PROTECTIVE MEASURES	1
4.1 Air Quality & Dust	1
4.2 Greenhouse Gas Emissions	1
4.3 Blasting	1
4.4 Geohazards	1
4.5 Groundwater Wells	1
4.6 Erosion & Sediment Control	1
4.7 Surface Water, Wetlands, Fish & Habitat	1
4.8 Terrestrial Plants & Lichen	1
4.9 Terrestrial Wildlife & Habitat	1
4.10 Avifauna & Bats	1
4.11 Noise Management	1
4.12 Traffic Control	1
4.13 Non-Hazardous Solid Waste Disposal	1
4.14 Contaminant Prevention Plan	1
4.14.1 Hazardous Materials & Waste Materials Management	1
4.14.2 Wastewater Management	1
5.0 CONTINGENCY PLANS	1
5.1 Spill Control Plan	2
5.1.1 Prevention	2
5.1.2 Response Procedures	2
5.1.3 Clean-up Procedures	2

5.2 Failure of Erosion & Sedimentation Controls.....2
5.2.1 Prevention.....2
5.2.2 Response Procedures2
5.3 Discovery of Archaeological, Culture, or Heritage Resources2
5.3.1 Response Procedures2
5.4 Fires2
5.4.1 Prevention.....2
5.4.2 Response Procedures2
6.0 COMMUNICATIONS2
6.1 Contact List.....2
6.2 Incident Reporting.....2
7.0 NOTIFICATION2
8.0 SITE VISITORS2
9.0 CLOSURE2
10.0 STATEMENT OF QUALIFICATIONS AND LIMITATIONS2
11.0 REFERENCES2

LIST OF TABLES

To be Determined

LIST OF FIGURES

To be Determined

LIST OF APPENDICES

To be Determined

APPENDIX B
MEKS

MEKS complete and under review

APPENDIX C ENGAGEMENT

MI'KMAQ ENGAGEMENT

Sarah Palmer

From: Katherine Dorey <Katherine.Dorey@townofmahonebay.ca>
Sent: January 5, 2021 11:26 AM
To: oaa@novascotia.ca
Cc: Aaron Long; Frank Kuznik
Subject: Ellershouse Wind Farm Expansion
Attachments: OOA EWF Expansion Intro_20200105.pdf; EWF Existing and Proposed Layout.pdf; EWF Environmental Constraints.pdf

CAUTION: This email originated from outside of the organization. Do not click links or open attachments unless you recognize the sender and know the content is safe.

To whom it may concern,

On behalf of the Alternative Resource Energy Authority, a municipally owned entity (in which the Town of Mahone Bay is a partner) and Potentia Renewables Incorporated, we are contacting you today to notify you of proposed plans to assess the feasibility of an expansion to the existing Ellershouse Wind Farm located in West Hants, Nova Scotia. We are early in the development process and seek the Office of Aboriginal Affairs recommendations and guidance on First Nation consultation.

Please find attached an introduction letter to the project, proposed expansion sites and the environmental constraints. This information is also what we hope to send to First Nation Chiefs near the proposed project to begin consultation. As noted in the letter and map attached, two of our proposed turbines are located on the St. Croix First Nation reserve. We wish to engage in meaningful consultation with the Mi'kmaq communities while we are still in the early development stages and plan to send initial project information letters to the Chiefs of Annapolis Valley and Glooscap First Nation communities in the coming weeks.

Please let us know if you have any questions, concerns, or require additional information.

Sincerely,

Katherine Dorey
Climate and Energy Outreach Coordinator



493 Main Street
PO Box 530
Mahone Bay, NS, B0J 2E0
902-521-4922

Nova Scotia Office of Aboriginal Affairs
5251 Duke St, 5th Floor
PO Box 1617,
Halifax, Nova Scotia

January 05, 2021

RE: Ellershouse Wind Farm Expansion First Nation Consultation

To whom it may concern,

The Alternative Resource Energy Authority ("**AREA**") is contacting you today to establish a platform from which to discuss collaboration opportunities associated with the proposed expansion of the Ellershouse Wind Farm ("**EWF**").

Proponent

AREA is a partnership between the Towns of Antigonish, Berwick and Mahone Bay. The towns each operate electric utilities and distribute power to customers within their service areas and, through AREA, own and operate the Ellershouse Wind Farm. The current Ellershouse Windfarm consists of 10 turbines that produce 23.5 MW of energy and located near the community of Ellershouse, Nova Scotia. These 10 turbines were developed and constructed in three phases between 2015 and 2017.

AREA is exploring a site expansion opportunity in preparation for an anticipated Request for Proposal ("**RFP**") from the Province of Nova Scotia in Q1 of 2021 seeking renewable energy projects. If successful in the RFP, the project would then have the opportunity to sign a Power Purchase Agreement.

AREA is a small local, municipally-owned power producer that employs three full time employees. AREA has partnered with Potentia Renewables Inc. ("**PRI**") to increase AREA's capacity to continue exploring this expansion opportunity and to lead the development. www.potentia Renewables.com Development activities include a wind resource assessment, biological, physical, and socio-economic studies for a Class 1 Environmental Assessment and consultation activities on behalf of the project.

PRI, a 100% owned Canadian company, will be the lead investor and operator of the expansion project should it be successful through the RFP and is actively seeking partnership opportunities with First Nation Communities and municipal entities. PRI has a successful history of consulting and partnering with a number of First Nation Communities across Canada and as an example can be demonstrated by the current relationship built with Paul First Nation in Alberta who will be 25% owners of the 113MW Stirling Wind Project.

Project Description

AREA is currently investigating the feasibility of roughly 13 additional turbine locations near the Annapolis Valley First Nation territory, with two preferred turbine locations on reserve land (Please refer to the maps attached for the regional location, current and proposed turbine

locations.) These 13 turbines will produce approximately 65 MW of clean renewable energy to the local grid. Further wind resource data will inform the most efficient turbine locations and technology for the project.

The project location is ideal for wind energy because of the favourable wind resource, a robust electrical grid interconnection and can be effectively integrated with the local community and environment.

The following is the proposed timeline of activities assuming Nova Scotia releases an RFP in Q1 of 2021.

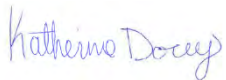
- July 2020: AREA and PRI engage in partnership
- Aug 2020: Meteorological mast installed to measure wind speeds.
- Oct 2020: Fall environmental work initiated, Winter studies to begin in January 2021
- Jan-Sept 2021: Continue environmental field studies.
- Feb 2021: Anticipated RFP Release
- Sept 2021: RFP Successful projects notified
- October 2021: EIA submission and review if bid successful
- Q2 2022: Begin construction
- Q4 2022: Project operation

Consultation

During development of the first phases, Minas Energy, on behalf of AREA, had regular meetings with the local First Nation Communities, Kwilmu'kw Maw-klusuaqn Negotiation Office ("**KMKNO**"), and the Native Council of Nova Scotia. It is our intent to mirror these conversations and engage in meaningful consultation throughout all phases of this proposed expansion, but we would welcome input from all parties on how best to engage in a respectful manner. We are also aware that the Mi'kmawey Forestry Initiative is active near this area and look forward to discussing the project details further to determine how we can work together.

In addition, AREA and our partner, PRI, would be very interested in discussing project employment, turbine siting options and ownership investment opportunities with the Mi'kmaq Communities. If this of interest to your community or if you have any questions or concerns about the proposed expansion, please do not hesitate to reach out. We can be contacted at katherine.dorey@townofmahonebay.ca or 902-521-4922.

Sincerely,

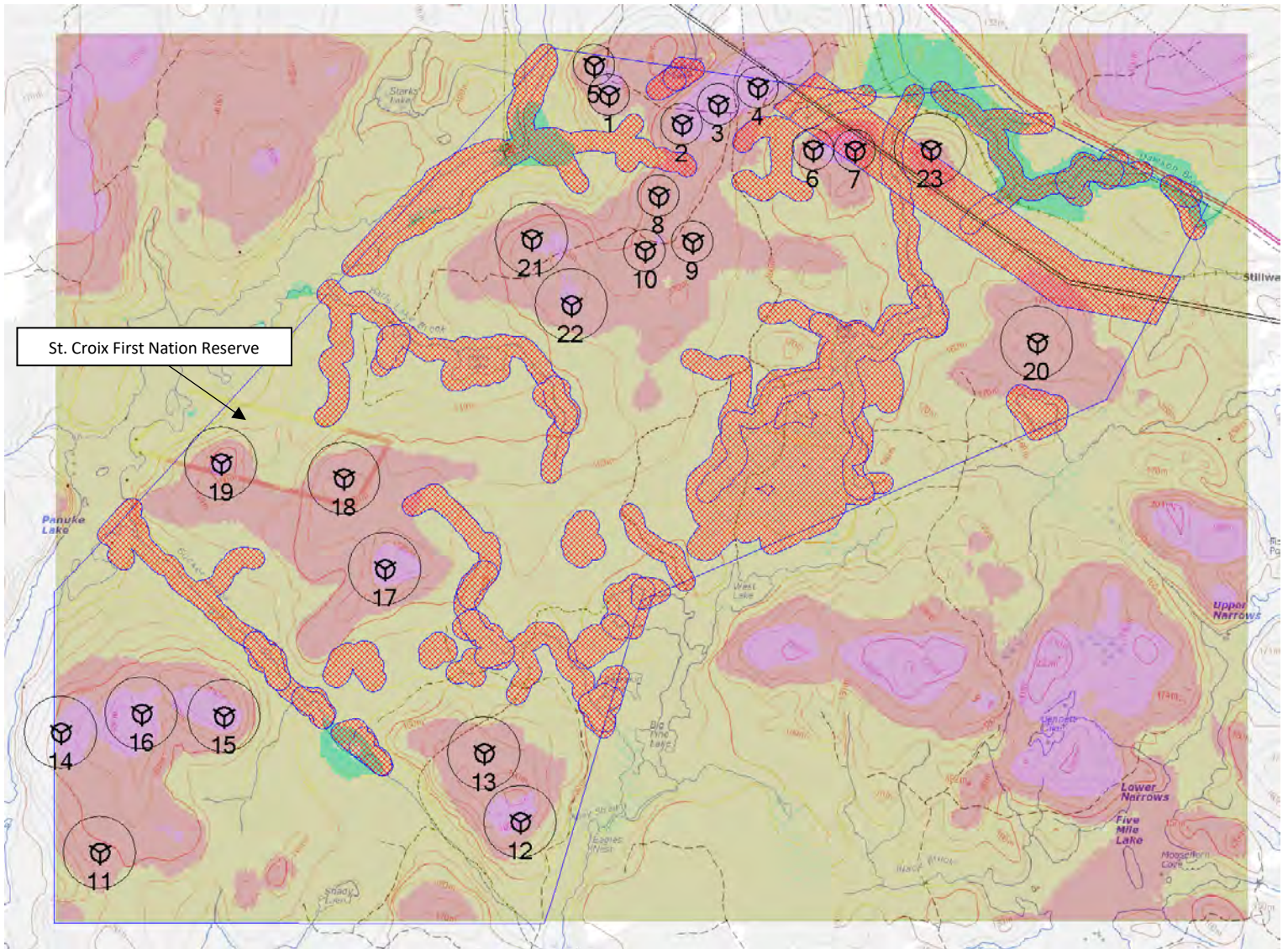


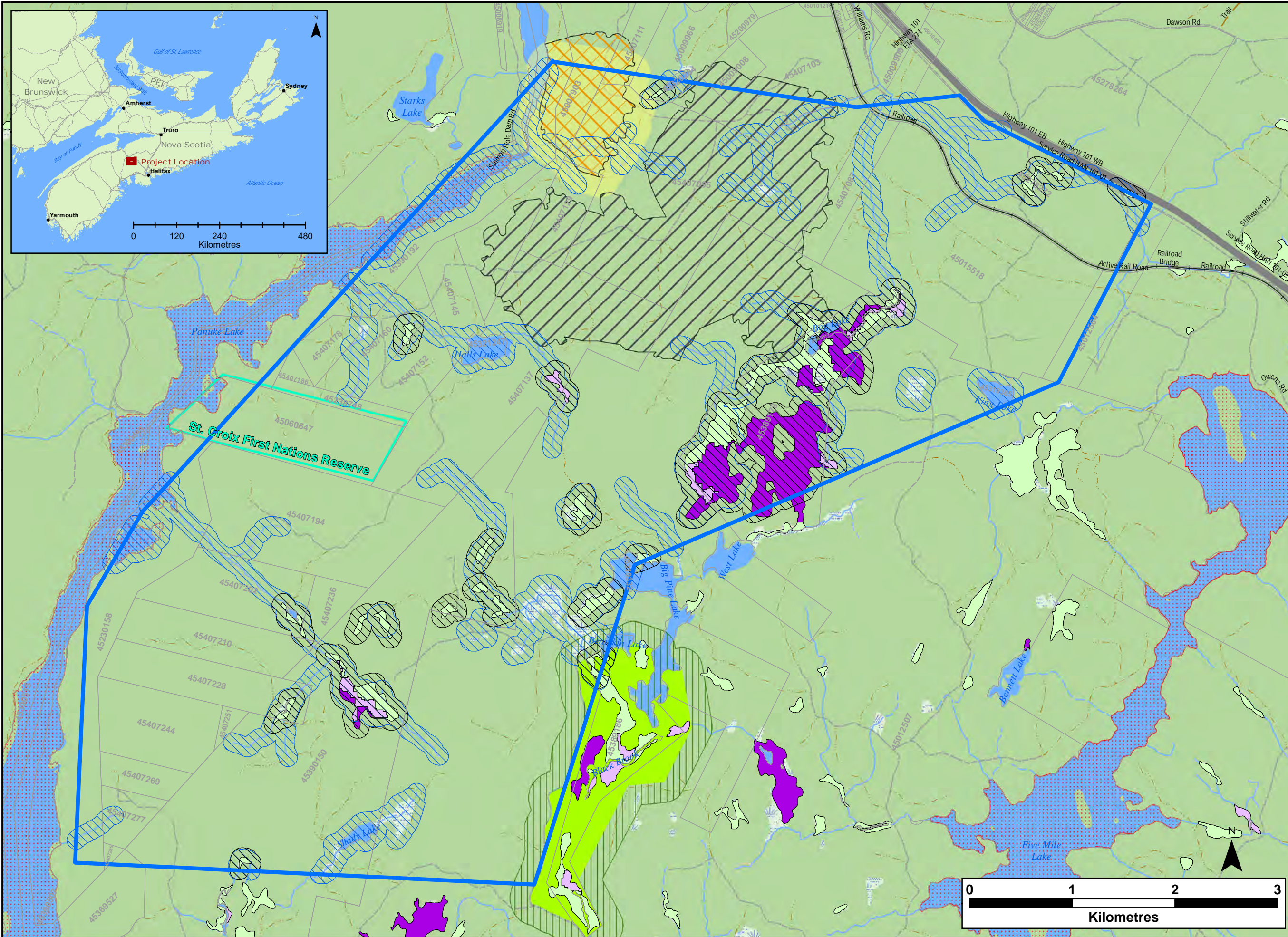
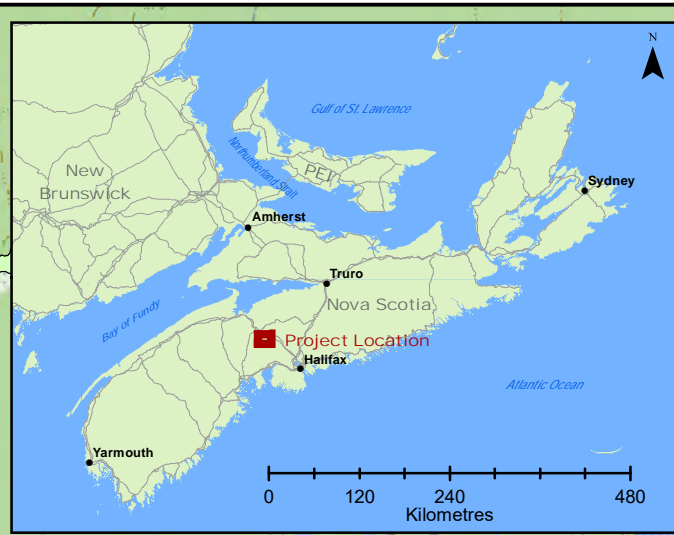
Katherine Dorey
Climate and Energy Outreach Coordinator
Town of Mahone Bay

EWF Existing and Potential Turbine Expansion Sites

This map shows the existing and proposed turbine layout. Please refer to the second map for more detail on environmental constraints.

- 1-10 represent existing turbines.
- 11-23 represent 13 potential expansion locations.
- 18 & 19 are proposed on the St. Croix First Nation Reserve.





Notes:
 1. Data Sources: GeoNOVA, NSTD, NSTIR.
 2. Projection: NAD83 UTM Zone 20 North.

- Legend:**
- Area of Interest
 - Property Boundaries
 - Water Features**
 - Mapped Stream
 - Mapped Indefinite Stream
 - Mapped Wet
 - Mapped Lakes and Rivers
 - Lake & Watercourse 90m Buffer
 - NSDLF Wetland Inventory**
 - Bog or Fen
 - Fen
 - Swamp
 - NSDLF Wetlands 90m Buffer
 - Significant Species & Habitat**
 - Species at Risk Special Management Area
 - Species of Concern (Common Loon)
 - Bald Eagle Nesting Habitat
 - Nesting Habitat 200m Buffer
 - Eagle Nest Nature Reserve
 - Eagle Nest Nature Reserve 200m Buffer

**Ellershouse Wind Farm
 Environmental
 Constraints**



Date: Dec. 2020	Project #: 19-6807
Scale: 1:35,000	Drawing #: 1
Drawn By: M. Marriott	
Checked By: S. Dickey	





Proposed Ellershouse Windfarm Expansion

January 27th, 2021

Proponents



- Alternative Resource Energy Authority (AREA)
 - Municipal Partners: Town's of Mahone Bay, Berwick, and Antigonish
 - Leads the pursuit of decarbonization for the municipal electric utilities and other municipalities in Nova Scotia
 - Owner and Operator of the Existing Ellershose Wind Farm
- Potentia Renewables Incorporated

Ellershouse Windfarm

- 10 Enercon Turbines: Output 23MW
- Developed with assistance from Minas Energy in three phases
 - Phase 1: 4 Turbines Commissioned in 2015
 - Phase 2: 3 Turbines Commissioned in 2016
 - Phase 3: 3 Turbines Commissioned in 2017
- Environmental Assessments were submitted to the Province and approved
- Previous First Nation Engagement occurred through Minas Energy



Proposed Expansion: 13 Turbines (65MW)



Work Completed To Date

➤ Wind Resource Assessment

- MET Town Installed August 2020

➤ Crownlands Application Submitted

- Application Submitted this January 2021

➤ Environmental Work Completed

- Wildlife Camera Assessments
- Winter Fauna Studies began this January 2021

➤ Grid Interconnection

- Received System Impact Study January 2021
- Favorable Results

Process Ahead

➤ NSPI System Studies

- Facilities Study
- Generator Interconnection Agreement

➤ Provincial RFP Process

- Anticipated release in February 2021
- Anticipated Announcement September 2021

➤ Environmental Assessment Submission

- Complete Spring, Summer & Fall Studies
- Submit EA in Q4 2021

➤ Community Engagement

- Community Liaison Committee established



First Nation Engagement

- On January 13th letters were sent to Annapolis Valley, Glooscap & Sipeknekatik First Nations
 - No response to date
 - Will follow-up to arrange meetings with Chiefs and for Community Meetings if desired
- Partnership opportunities and project involvement
 - Revenue sharing
 - Job opportunities
 - Environmental consulting
- Seeking Office of Aboriginal Affairs recommendations for meaningful First Nation Engagement

Thank You!



Contact Us:

Katherine Dorey

Climate & Energy Outreach Coordinator

Katherine.dorey@townofmahonebay.ca

902.521.4922

From: Michael Payne
To: "rcrowe@glooscapfirstnation.com"
Cc: [Frank Kuznik](#); "[Katherine Dorey](#)"; [Aaron Long](#); "admin@glooscapfirstnation.com"
Subject: AREA letter to Chief Peters 2021Jan13
Date: January 13, 2021 12:02:47 PM
Attachments: [Letter to Chief Peters Glooscap FN 2021Jan13.pdf](#)
[EWF Existing and Proposed Layout.pdf](#)
[EWF Enviromental Constraints.pdf](#)
Importance: High

CAUTION: This email originated from outside of the organization. Do not click links or open attachments unless you recognize the sender and know the content is safe.

Chief Peters,

Please see attached a letter and attachments from Mayor Clarke of the Alternative Resource Energy Board. The originals are in the mail.

Regards,

Mike



Michael R. Payne
Chief Administrative Officer
p 902 538 8068 Ext: 4007
mpayne@berwick.ca
236 Commercial Street, P.O. Box 130
Berwick, NS B0P 1E0

This message contains confidential information and is intended only for the intended recipient(s). If you are not the named recipient you should not read, distribute or copy this e-mail. Please notify the sender immediately via e-mail if you have received this e-mail by mistake; then, delete this e-mail from your system.

Chief and Council
Glooscap First Nation
159 Smith Road,
Hantsport, NS
B0P 1P0

January 12, 2021

RE: Ellershouse Wind Farm Expansion First Nation Consultation

Dear Chief Peters,

The Alternative Resource Energy Authority ("**AREA**") is contacting you today to establish a platform from which to discuss collaboration opportunities associated with the proposed expansion of the Ellershouse Wind Farm ("**EFW**").

Proponent

AREA is a partnership between the Towns of Antigonish, Berwick and Mahone Bay. The towns each operate electric utilities and distribute power to customers within their service areas and, through AREA, own and operate the Ellershouse Wind Farm. The current Ellershouse Windfarm consists of 10 turbines that produce 23.5 MW of energy and located near the community of Ellershouse, Nova Scotia. These 10 turbines were developed and constructed in three phases between 2015 and 2017.

AREA is exploring a site expansion opportunity in preparation for an anticipated Request for Proposal ("**RFP**") from the Province of Nova Scotia in Q1 of 2021 seeking renewable energy projects. If successful in the RFP, the project would then have the opportunity to sign a Power Purchase Agreement.

AREA is a small local, municipally-owned power producer that employs three full time employees. AREA has partnered with Potentia Renewables Inc. ("**PRI**") to increase AREA's capacity to continue exploring this expansion opportunity and to lead the development. www.potentiarenewables.com Development activities include a wind resource assessment, biological, physical, and socio-economic studies for a Class 1 Environmental Assessment and consultation activities on behalf of the project.

PRI, a 100% owned Canadian company, will be the lead investor and operator of the expansion project should it be successful through the RFP and is actively seeking partnership opportunities with First Nation Communities and municipal entities. PRI has a successful history of consulting and partnering with a number of First Nation Communities across Canada and as an example can be demonstrated by the current relationship built with Paul First Nation in Alberta who will be 25% owners of the 113MW Stirling Wind Project.

Project Description

AREA is currently investigating the feasibility of roughly 13 additional turbine locations near the Annapolis Valley First Nation territory, with two preferred turbine locations on reserve land (Please refer to the maps attached for the regional location, current and proposed turbine locations.)

These 13 turbines will produce approximately 65 MW of clean renewable energy to the local grid. Further wind resource data will inform the most efficient turbine locations and technology for the project.

The project location is ideal for wind energy because of the favourable wind resource, a robust electrical grid interconnection and can be effectively integrated with the local community and environment.

The following is the proposed timeline of activities assuming Nova Scotia releases an RFP in Q1 of 2021.

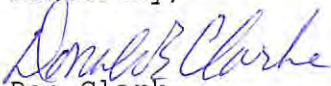
- July 2020: AREA and PRI engage in partnership
- Aug 2020: Meteorological mast installed to measure wind speeds.
- Oct 2020: Fall environmental work initiated, Winter studies to begin in January 2021
- Jan-Sept 2021: Continue environmental field studies.
- Feb 2021: Anticipated RFP Release
- Sept 2021: RFP Successful projects notified
- October 2021: EIA submission and review if bid successful
- Q2 2022: Begin construction
- Q4 2022: Project operation

Consultation

During development of the first phases, Minas Energy, on behalf of AREA, had regular meetings with the local First Nation Communities, Kwilmu'kw Mawklusuaqn Negotiation Office ("KMKNO"), and the Native Council of Nova Scotia. It is our intent to mirror these conversations and engage in meaningful consultation throughout all phases of this proposed expansion, but we would welcome input from all parties on how best to engage in a respectful manner. We are also aware that the Mi'kmawey Forestry Initiative is active near this area and look forward to discussing the project details further to determine how we can work together.

In addition, AREA and our partner, PRI, would be very interested in discussing project employment, turbine siting options and ownership investment opportunities with the Mi'kmaq Communities. If this of interest to your community or if you have any questions or concerns about the proposed expansion, please do not hesitate to reach out. We can be contacted at mayor@berwick.ca or 902-538-8068.

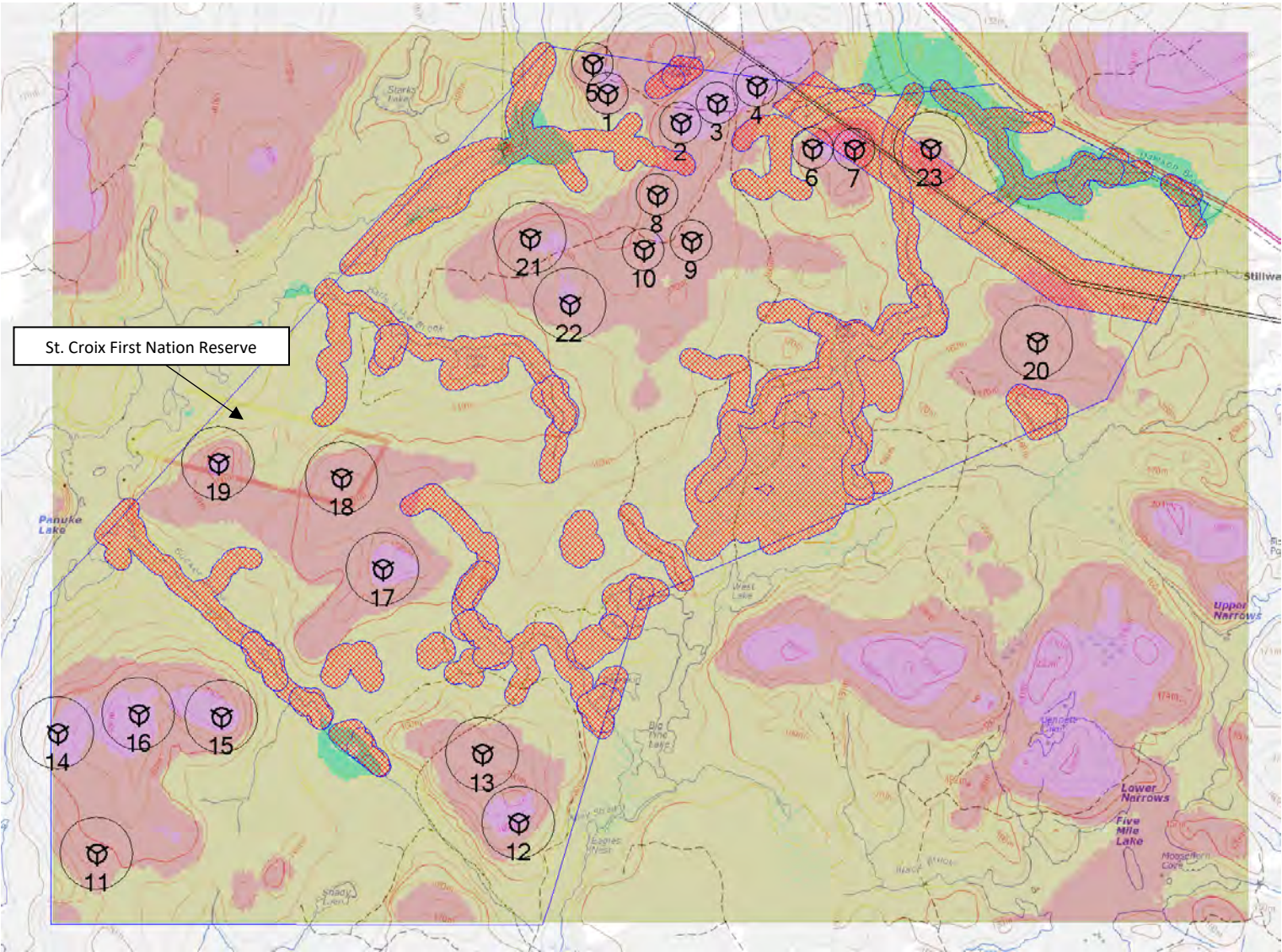
Sincerely,

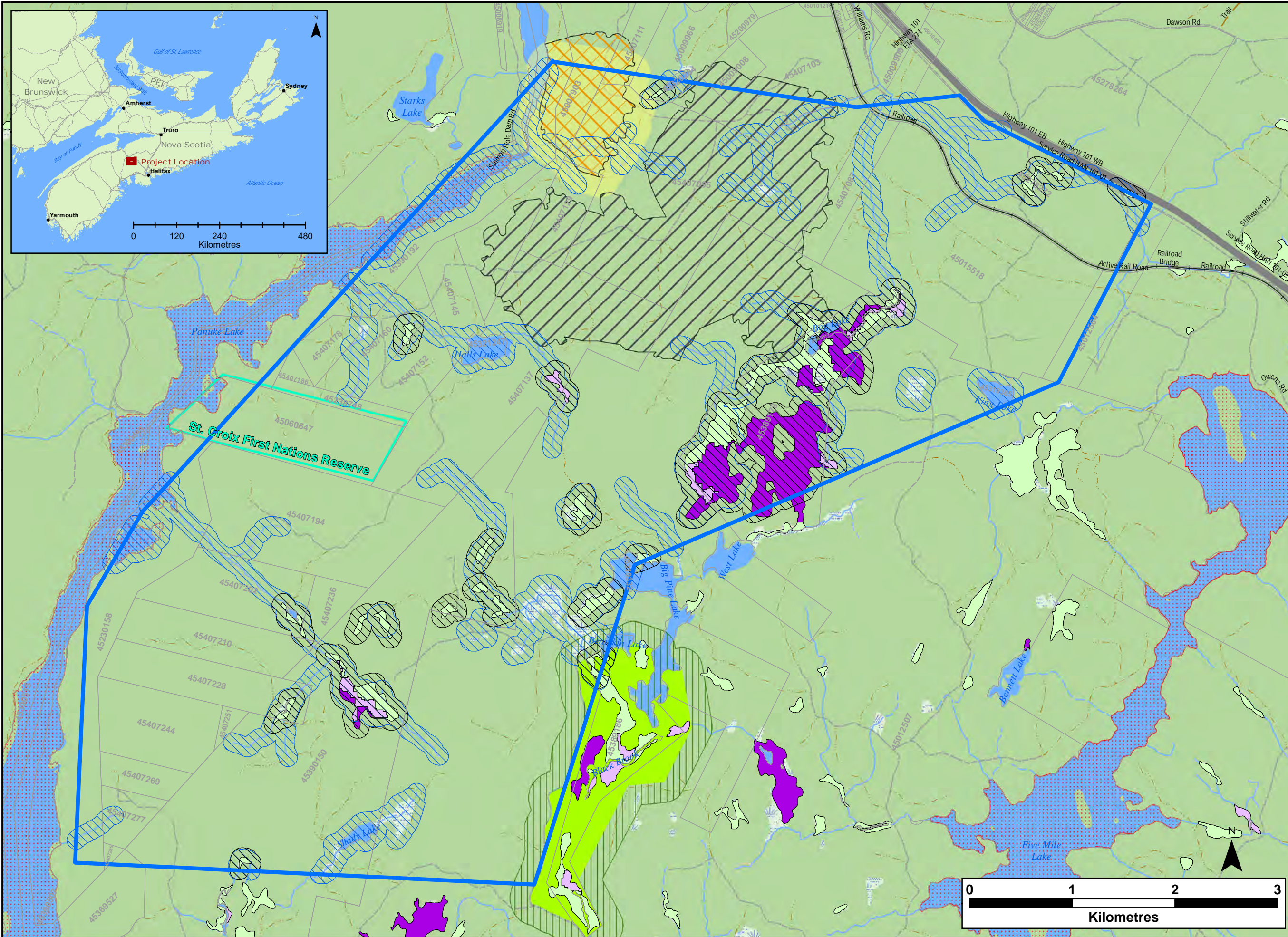
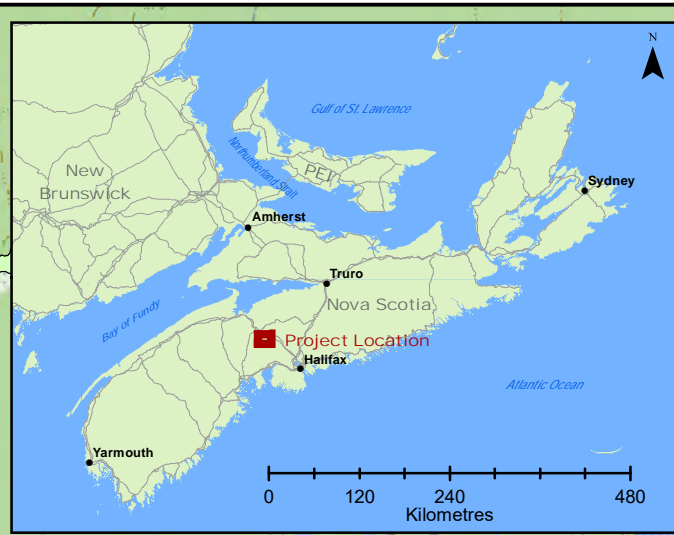

Don Clark,
Mayor of Berwick
AREA Board Member

EWF Existing and Potential Turbine Expansion Sites

This map shows the existing and proposed turbine layout. Please refer to the second map for more detail on environmental constraints.

- 1-10 represent existing turbines.
- 11-23 represent 13 potential expansion locations.
- 18 & 19 are proposed on the St. Croix First Nation Reserve.





Notes:
 1. Data Sources: GeoNOVA, NSTD, NSTIR.
 2. Projection: NAD83 UTM Zone 20 North.

- Legend:**
- Area of Interest
 - Property Boundaries
 - Water Features**
 - Mapped Stream
 - Mapped Indefinite Stream
 - Mapped Wet
 - Mapped Lakes and Rivers
 - Lake & Watercourse 90m Buffer
 - NSDLF Wetland Inventory**
 - Bog or Fen
 - Fen
 - Swamp
 - NSDLF Wetlands 90m Buffer
 - Significant Species & Habitat**
 - Species at Risk Special Management Area
 - Species of Concern (Common Loon)
 - Bald Eagle Nesting Habitat
 - Nesting Habitat 200m Buffer
 - Eagle Nest Nature Reserve
 - Eagle Nest Nature Reserve 200m Buffer

**Ellershouse Wind Farm
 Environmental
 Constraints**



Date: Dec. 2020	Project #: 19-6807
Scale: 1:35,000	Drawing #: 1
Drawn By: M. Marriott	
Checked By: S. Dickey	



From: Michael Payne
To: ["info@sipeknekatik.ca"](mailto:info@sipeknekatik.ca)
Cc: [Aaron Long](#); ["Katherine Dorey"](#); [Frank Kuznik](#)
Subject: AREA letter to Chief Sack 2021Jan13
Date: January 13, 2021 12:08:06 PM
Attachments: [Letter to Chief Sack Sipeknekatik FN 2021Jan13.pdf](#)
[EWF Existing and Proposed Layout.pdf](#)
[EWF Enviromental Constraints.pdf](#)
Importance: High

CAUTION: This email originated from outside of the organization. Do not click links or open attachments unless you recognize the sender and know the content is safe.

Chief Sack,
Please see attached a letter and attachments from Mayor Clarke of the Alternative Resource Energy Board.
The originals are in the mail.

Regards,

Mike



Michael R. Payne
Chief Administrative Officer
p 902 538 8068 Ext: 4007
mpayne@berwick.ca
236 Commercial Street, P.O. Box 130
Berwick, NS B0P 1E0

This message contains confidential information and is intended only for the intended recipient(s). If you are not the named recipient you should not read, distribute or copy this e-mail. Please notify the sender immediately via e-mail if you have received this e-mail by mistake; then, delete this e-mail from your system.

Chief and Council
Sipekne'katik First Nation
522 Church Street,
Indian Brook, NS
B0N 2H0

January 12, 2021

RE: Ellershouse Wind Farm Expansion First Nation Consultation

Dear Chief Sack,

The Alternative Resource Energy Authority ("**AREA**") is contacting you today to establish a platform from which to discuss collaboration opportunities associated with the proposed expansion of the Ellershouse Wind Farm ("**EWf**").

Proponent

AREA is a partnership between the Towns of Antigonish, Berwick and Mahone Bay. The towns each operate electric utilities and distribute power to customers within their service areas and, through AREA, own and operate the Ellershouse Wind Farm. The current Ellershouse Windfarm consists of 10 turbines that produce 23.5 MW of energy and located near the community of Ellershouse, Nova Scotia. These 10 turbines were developed and constructed in three phases between 2015 and 2017.

AREA is exploring a site expansion opportunity in preparation for an anticipated Request for Proposal ("**RFP**") from the Province of Nova Scotia in Q1 of 2021 seeking renewable energy projects. If successful in the RFP, the project would then have the opportunity to sign a Power Purchase Agreement.

AREA is a small local, municipally-owned power producer that employs three full time employees. AREA has partnered with Potentia Renewables Inc. ("**PRI**") to increase AREA's capacity to continue exploring this expansion opportunity and to lead the development. www.potentiarenewables.com Development activities include a wind resource assessment, biological, physical, and socio-economic studies for a Class 1 Environmental Assessment and consultation activities on behalf of the project.

PRI, a 100% owned Canadian company, will be the lead investor and operator of the expansion project should it be successful through the RFP and is actively seeking partnership opportunities with First Nation Communities and municipal entities. PRI has a successful history of consulting and partnering with a number of First Nation Communities across Canada and as an example can be demonstrated by the current relationship built with Paul First Nation in Alberta who will be 25% owners of the 113MW Stirling Wind Project.

Project Description

AREA is currently investigating the feasibility of roughly 13 additional turbine locations near the Annapolis Valley First Nation territory, with two preferred turbine locations on reserve land (Please refer to the maps attached for the regional location, current and proposed turbine locations.)

These 13 turbines will produce approximately 65 MW of clean renewable energy to the local grid. Further wind resource data will inform the most efficient turbine locations and technology for the project.

The project location is ideal for wind energy because of the favourable wind resource, a robust electrical grid interconnection and can be effectively integrated with the local community and environment.

The following is the proposed timeline of activities assuming Nova Scotia releases an RFP in Q1 of 2021.

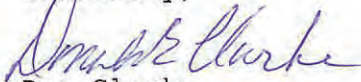
- July 2020: AREA and PRI engage in partnership
- Aug 2020: Meteorological mast installed to measure wind speeds.
- Oct 2020: Fall environmental work initiated, Winter studies to begin in January 2021
- Jan-Sept 2021: Continue environmental field studies.
- Feb 2021: Anticipated RFP Release
- Sept 2021: RFP Successful projects notified
- October 2021: EIA submission and review if bid successful
- Q2 2022: Begin construction
- Q4 2022: Project operation

Consultation

During development of the first phases, Minas Energy, on behalf of AREA, had regular meetings with the local First Nation Communities, Kwilmu'kw Mawklusuaqn Negotiation Office ("KMKNO"), and the Native Council of Nova Scotia. It is our intent to mirror these conversations and engage in meaningful consultation throughout all phases of this proposed expansion, but we would welcome input from all parties on how best to engage in a respectful manner. We are also aware that the Mi'kmawey Forestry Initiative is active near this area and look forward to discussing the project details further to determine how we can work together.

In addition, AREA and our partner, PRI, would be very interested in discussing project employment, turbine siting options and ownership investment opportunities with the Mi'kmaq Communities. If this of interest to your community or if you have any questions or concerns about the proposed expansion, please do not hesitate to reach out. We can be contacted at mayor@berwick.ca or 902-538-8068.

Sincerely,

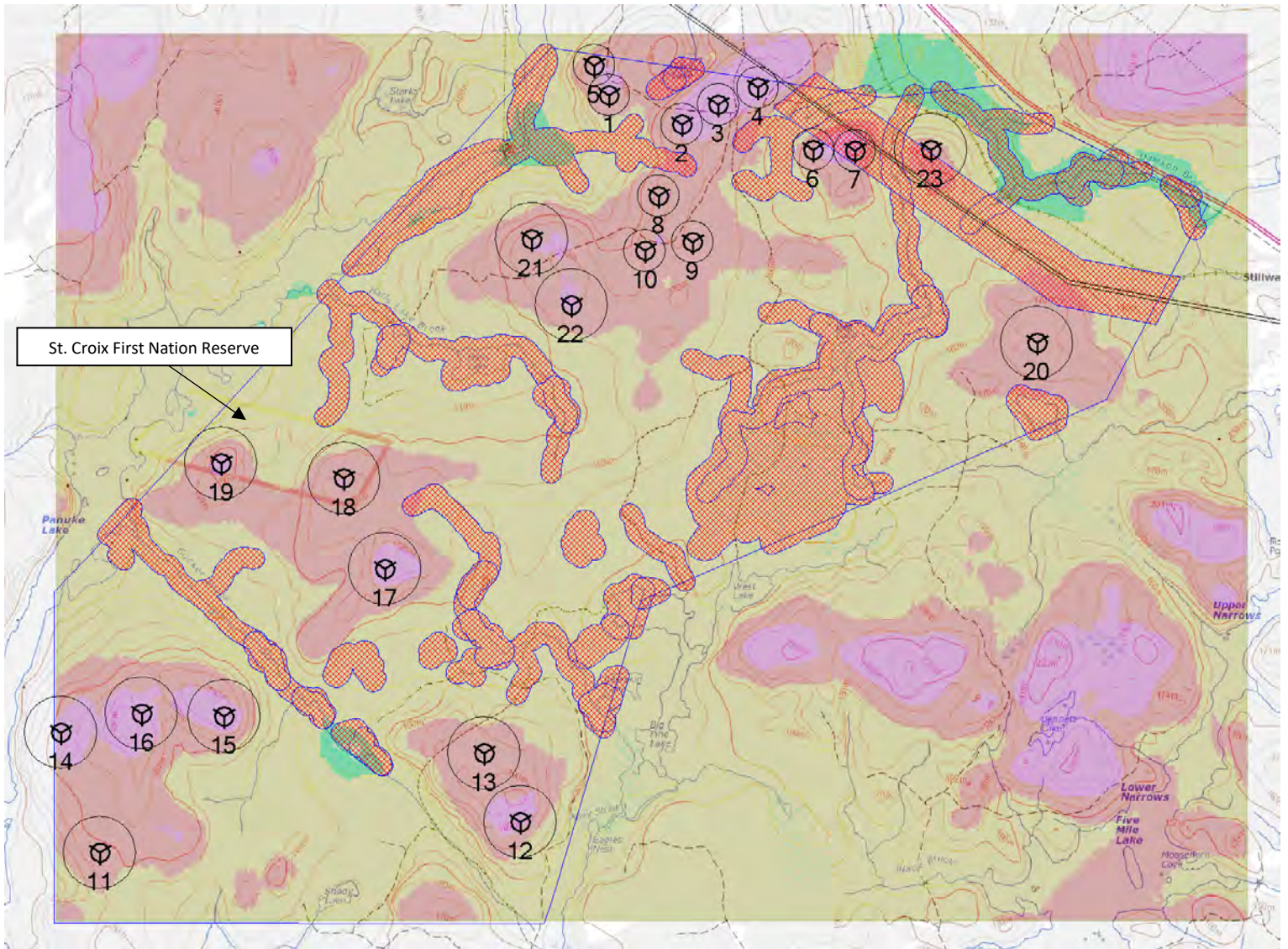


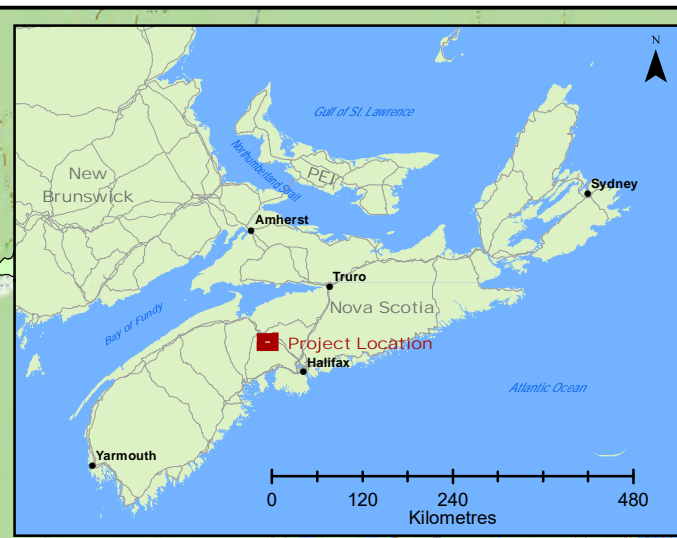
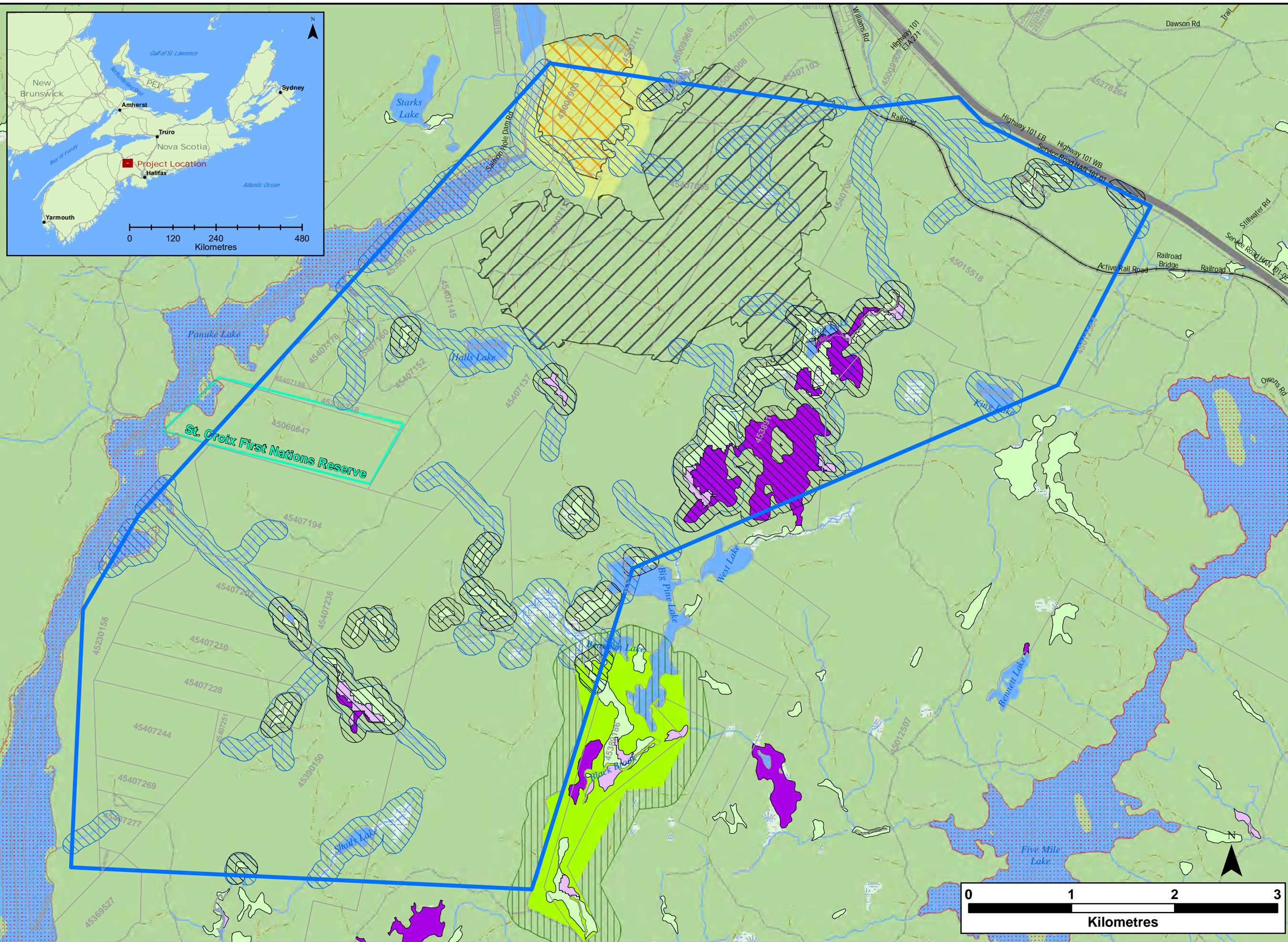
Don Clark,
Mayor of Berwick
AREA Board Member

EWF Existing and Potential Turbine Expansion Sites

This map shows the existing and proposed turbine layout. Please refer to the second map for more detail on environmental constraints.

- 1-10 represent existing turbines.
- 11-23 represent 13 potential expansion locations.
- 18 & 19 are proposed on the St. Croix First Nation Reserve.





Notes:
 1. Data Sources: GeoNOVA, NSTD, NSTIR.
 2. Projection: NAD83 UTM Zone 20 North.

- Legend:**
- Area of Interest
 - Property Boundaries
 - Water Features**
 - Mapped Stream
 - Mapped Indefinite Stream
 - Mapped Wet
 - Mapped Lakes and Rivers
 - Lake & Watercourse 90m Buffer
 - NSDLF Wetland Inventory**
 - Bog or Fen
 - Fen
 - Swamp
 - NSDLF Wetlands 90m Buffer
 - Significant Species & Habitat**
 - Species at Risk Special Management Area
 - Species of Concern (Common Loon)
 - Bald Eagle Nesting Habitat
 - Nesting Habitat 200m Buffer
 - Eagle Nest Nature Reserve
 - Eagle Nest Nature Reserve 200m Buffer

**Ellershouse Wind Farm
 Environmental
 Constraints**



Date: Dec. 2020	Project #: 19-6807
Scale: 1:35,000	Drawing #: 1
Drawn By: M. Marriott	
Checked By: S. Dickey	



From: Michael Payne
To: ["jtoney@avfn.ca"](mailto:jtoney@avfn.ca)
Cc: ["Aaron Long"](#); ["Katherine Dorey"](#); [Frank Kuznik](#)
Subject: AREA letter to Chief Toney 2021Jan13
Date: January 13, 2021 1:34:40 PM
Attachments: [Letter to Chief Toney AVFN 2021Jan13.pdf](#)
[EWF Existing and Proposed Layout.pdf](#)
[EWF Enviromental Constraints.pdf](#)
Importance: High

CAUTION: This email originated from outside of the organization. Do not click links or open attachments unless you recognize the sender and know the content is safe.

Chief Toney,

Please see attached a letter and attachments from Mayor Clarke of the Alternative Resource Energy Board. The originals are in the mail.

Regards,

Mike



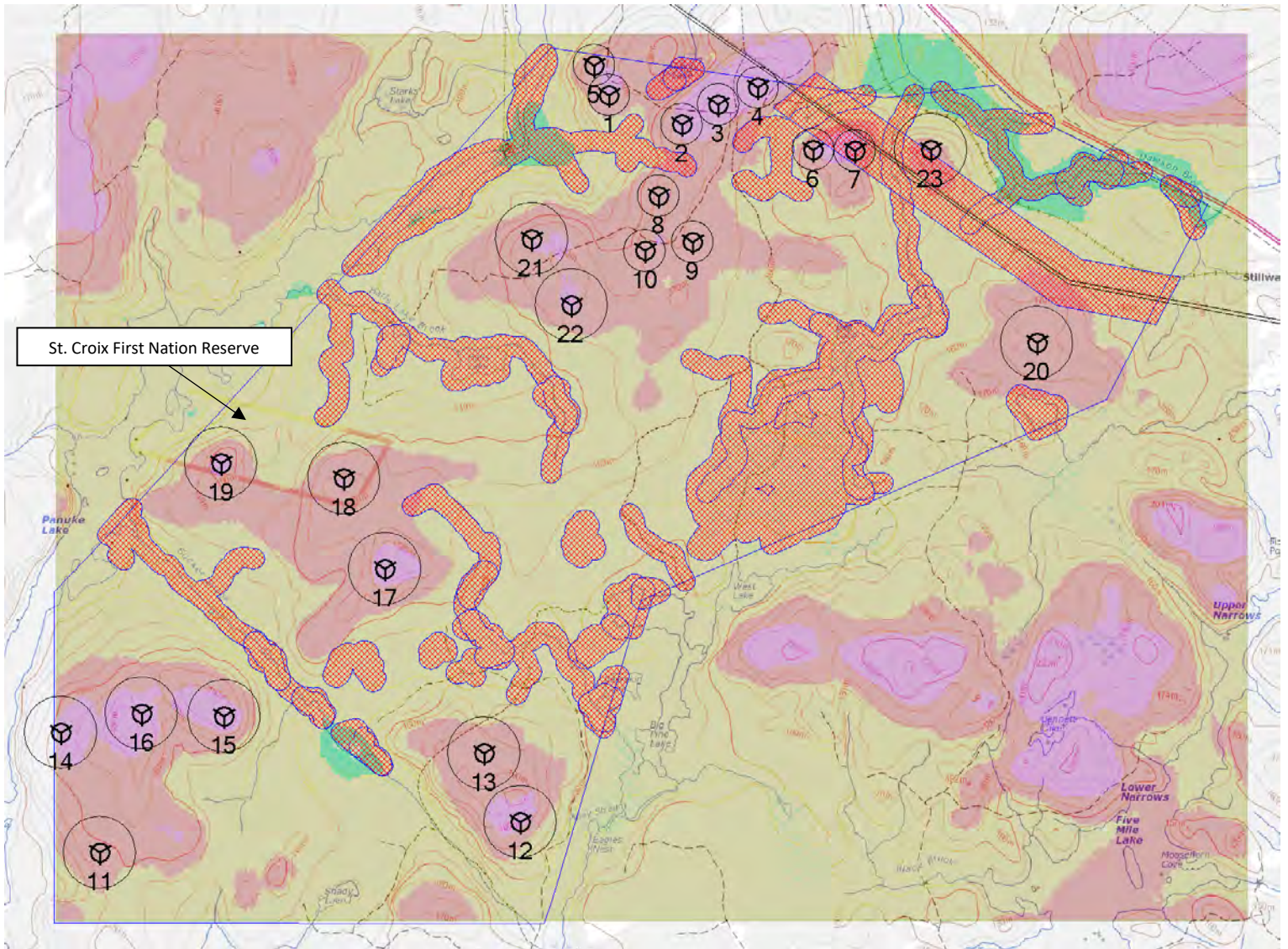
Michael R. Payne
Chief Administrative Officer
p 902 538 8068 Ext: 4007
mpayne@berwick.ca
236 Commercial Street, P.O. Box 130
Berwick, NS B0P 1E0

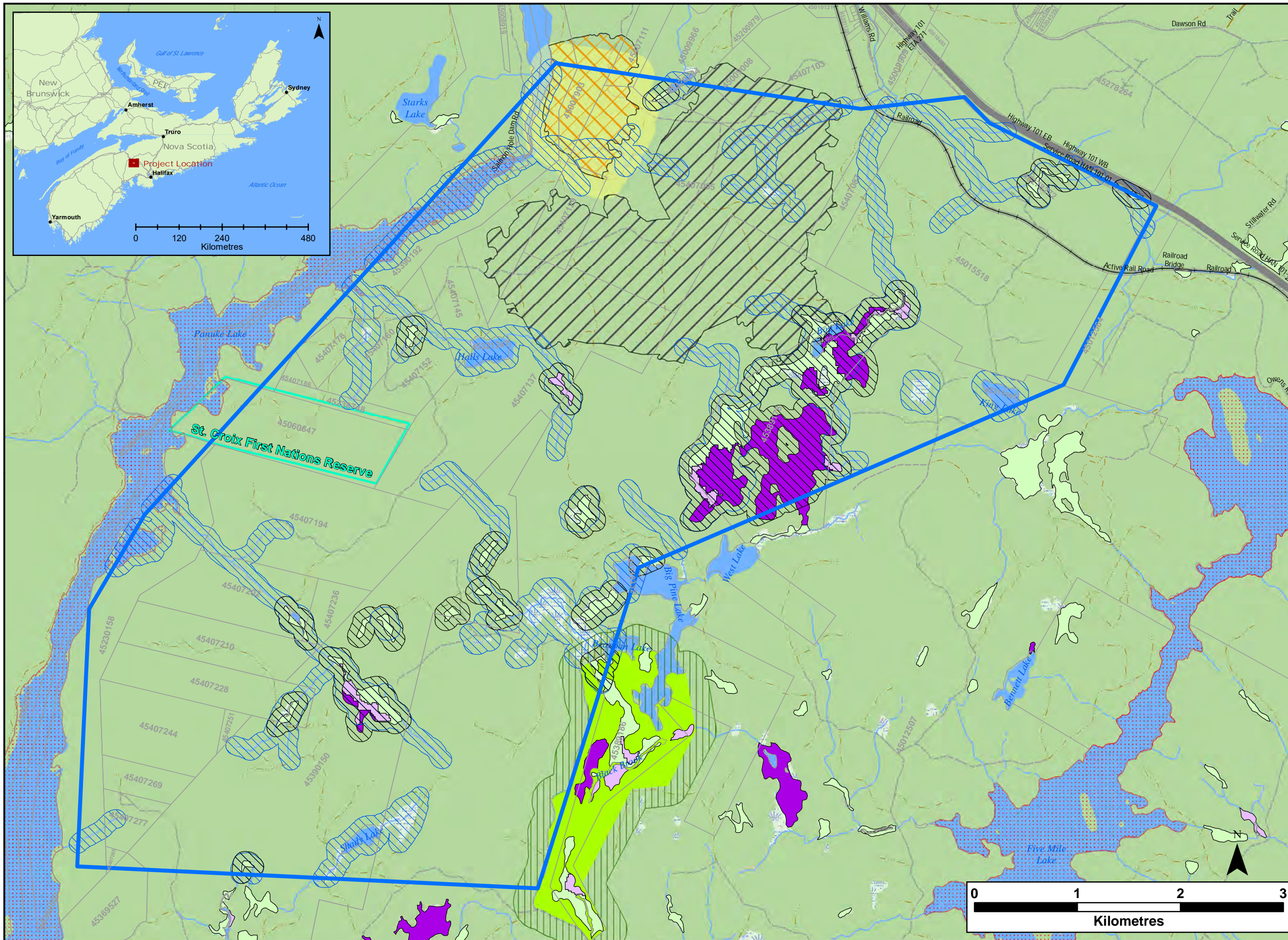
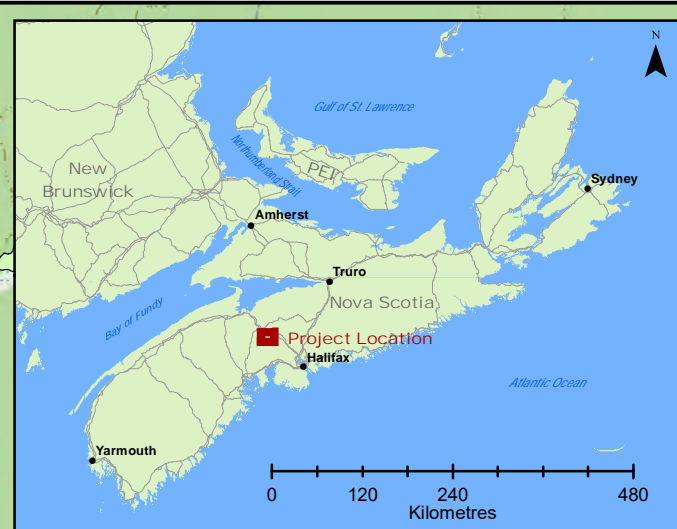
This message contains confidential information and is intended only for the intended recipient(s). If you are not the named recipient you should not read, distribute or copy this e-mail. Please notify the sender immediately via e-mail if you have received this e-mail by mistake; then, delete this e-mail from your system.

EWF Existing and Potential Turbine Expansion Sites

This map shows the existing and proposed turbine layout. Please refer to the second map for more detail on environmental constraints.

- 1-10 represent existing turbines.
- 11-23 represent 13 potential expansion locations.
- 18 & 19 are proposed on the St. Croix First Nation Reserve.





Notes:
 1. Data Sources: GeoNOVA, NSTD, NSTIR.
 2. Projection: NAD83 UTM Zone 20 North.

- Legend:**
- Area of Interest
 - Property Boundaries
 - Water Features**
 - Mapped Stream
 - Mapped Indefinite Stream
 - Mapped Wet
 - Mapped Lakes and Rivers
 - Lake & Watercourse 90m Buffer
 - NSDLF Wetland Inventory**
 - Bog or Fen
 - Fen
 - Swamp
 - NSDLF Wetlands 90m Buffer
 - Significant Species & Habitat**
 - Species at Risk Special Management Area
 - Species of Concern (Common Loon)
 - Bald Eagle Nesting Habitat
 - Nesting Habitat 200m Buffer
 - Eagle Nest Nature Reserve
 - Eagle Nest Nature Reserve 200m Buffer

**Ellershouse Wind Farm
 Environmental
 Constraints**



Date: Dec. 2020	Project #: 19-6807
Scale: 1:35,000	Drawing #: 1
Drawn By: M. Marriott	
Checked By: S. Dickey	



From: Michael Payne
To: ["jtoney@avfn.ca"](mailto:jtoney@avfn.ca)
Cc: ["Aaron Long"](#); ["Katherine Dorey"](#); [Frank Kuznik](#)
Subject: AREA letter to Chief Toney 2021Jan13
Date: January 13, 2021 1:34:40 PM
Attachments: [Letter to Chief Toney AVFN 2021Jan13.pdf](#)
[EWF Existing and Proposed Layout.pdf](#)
[EWF Enviromental Constraints.pdf](#)
Importance: High

CAUTION: This email originated from outside of the organization. Do not click links or open attachments unless you recognize the sender and know the content is safe.

Chief Toney,

Please see attached a letter and attachments from Mayor Clarke of the Alternative Resource Energy Board. The originals are in the mail.

Regards,

Mike



Michael R. Payne
Chief Administrative Officer
p 902 538 8068 Ext: 4007
mpayne@berwick.ca
236 Commercial Street, P.O. Box 130
Berwick, NS B0P 1E0

This message contains confidential information and is intended only for the intended recipient(s). If you are not the named recipient you should not read, distribute or copy this e-mail. Please notify the sender immediately via e-mail if you have received this e-mail by mistake; then, delete this e-mail from your system.

Chief and Council
Annapolis Valley First Nation
29 Toney Blvd,
Cambridge, NS
B0P 1G0

January 12, 2021

RE: Ellershouse Wind Farm Expansion First Nation Consultation

Dear Chief Toney,

The Alternative Resource Energy Authority ("**AREA**") is contacting you today to establish a platform from which to discuss collaboration opportunities associated with the proposed expansion of the Ellershouse Wind Farm ("**EWE**").

Proponent

AREA is a partnership between the Towns of Antigonish, Berwick and Mahone Bay. The towns each operate electric utilities and distribute power to customers within their service areas and, through AREA, own and operate the Ellershouse Wind Farm. The current Ellershouse Windfarm consists of 10 turbines that produce 23.5 MW of energy and located near the community of Ellershouse, Nova Scotia. These 10 turbines were developed and constructed in three phases between 2015 and 2017.

AREA is exploring a site expansion opportunity in preparation for an anticipated Request for Proposal ("**RFP**") from the Province of Nova Scotia in Q1 of 2021 seeking renewable energy projects. If successful in the RFP, the project would then have the opportunity to sign a Power Purchase Agreement.

AREA is a small local, municipally-owned power producer that employs three full time employees. AREA has partnered with Potentia Renewables Inc. ("**PRI**") to increase AREA's capacity to continue exploring this expansion opportunity and to lead the development. www.potentiarenewables.com Development activities include a wind resource assessment, biological, physical, and socio-economic studies for a Class 1 Environmental Assessment and consultation activities on behalf of the project.

PRI, a 100% owned Canadian company, will be the lead investor and operator of the expansion project should it be successful through the RFP and is actively seeking partnership opportunities with First Nation Communities and municipal entities. PRI has a successful history of consulting and partnering with a number of First Nation Communities across Canada and as an example can be demonstrated by the current relationship built with Paul First Nation in Alberta who will be 25% owners of the 113MW Stirling Wind Project.

Project Description

AREA is currently investigating the feasibility of roughly 13 additional turbine locations near the Annapolis Valley First Nation territory, with two preferred turbine locations on reserve land (Please refer to the maps attached for the regional location, current and proposed turbine locations.)

These 13 turbines will produce approximately 65 MW of clean renewable energy to the local grid. Further wind resource data will inform the most efficient turbine locations and technology for the project.

The project location is ideal for wind energy because of the favourable wind resource, a robust electrical grid interconnection and can be effectively integrated with the local community and environment.

The following is the proposed timeline of activities assuming Nova Scotia releases an RFP in Q1 of 2021.


- July 2020: AREA and PRI engage in partnership
- Aug 2020: Meteorological mast installed to measure wind speeds.
- Oct 2020: Fall environmental work initiated, Winter studies to begin in January 2021
- Jan-Sept 2021: Continue environmental field studies.
- Feb 2021: Anticipated RFP Release
- Sept 2021: RFP Successful projects notified
- October 2021: EIA submission and review if bid successful
- Q2 2022: Begin construction
- Q4 2022: Project operation

Consultation

During development of the first phases, Minas Energy, on behalf of AREA, had regular meetings with the local First Nation Communities, Kwilmu'kw Mawklusuaqn Negotiation Office ("KMKNO"), and the Native Council of Nova Scotia. It is our intent to mirror these conversations and engage in meaningful consultation throughout all phases of this proposed expansion, but we would welcome input from all parties on how best to engage in a respectful manner. We are also aware that the Mi'kmaq Forestry Initiative is active near this area and look forward to discussing the project details further to determine how we can work together.

In addition, AREA and our partner, PRI, would be very interested in discussing project employment, turbine siting options and ownership investment opportunities with the Mi'kmaq Communities. If this of interest to your community or if you have any questions or concerns about the proposed expansion, please do not hesitate to reach out. We can be contacted at mayor@berwick.ca or 902-538-8068.

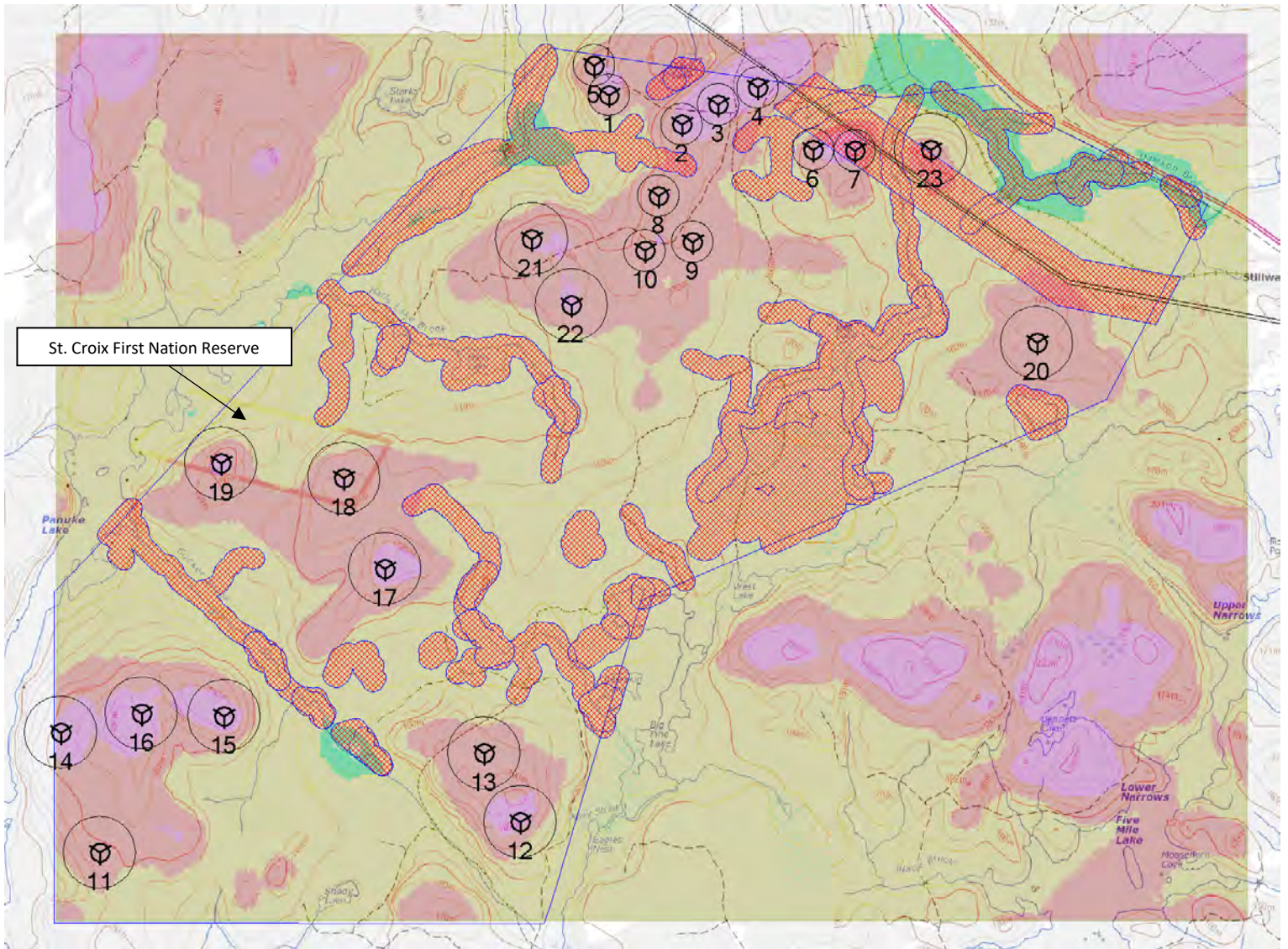
Sincerely,

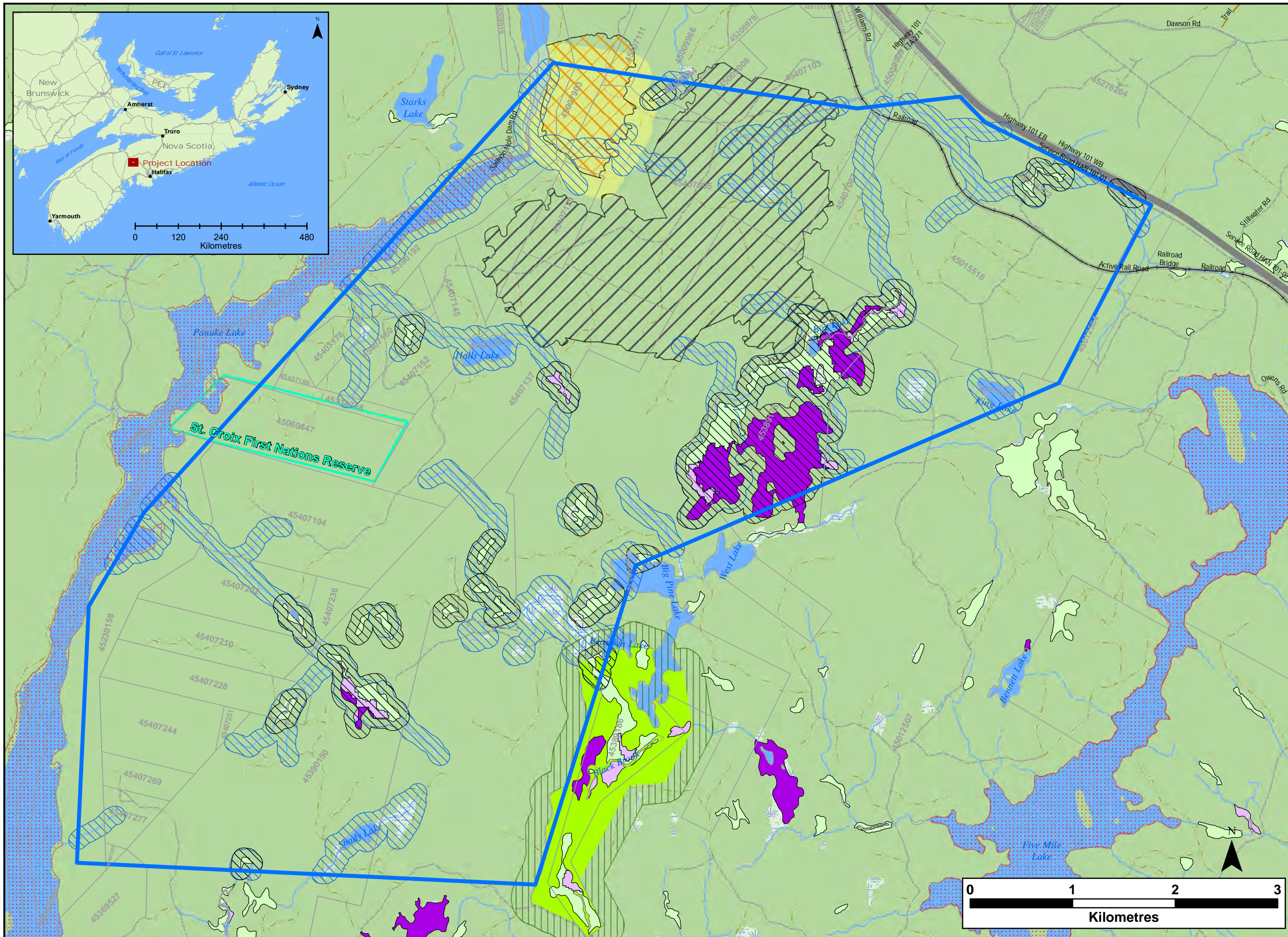
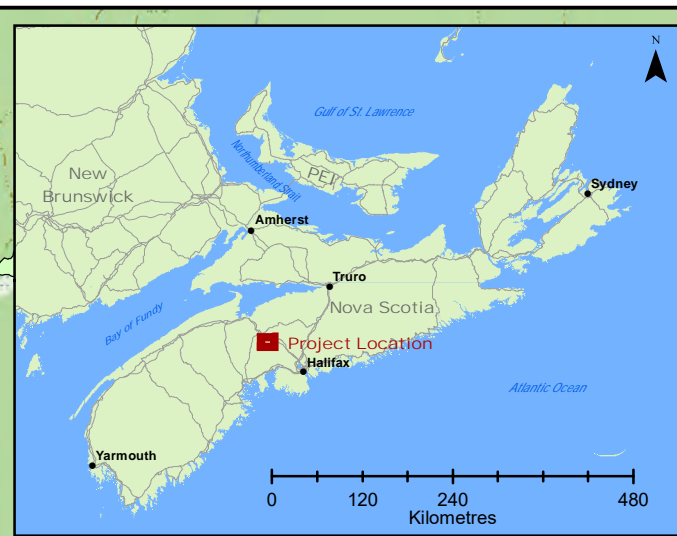

Don Clark,
Mayor of Berwick
AREA Board Member

EWF Existing and Potential Turbine Expansion Sites

This map shows the existing and proposed turbine layout. Please refer to the second map for more detail on environmental constraints.

- 1-10 represent existing turbines.
- 11-23 represent 13 potential expansion locations.
- 18 & 19 are proposed on the St. Croix First Nation Reserve.





Notes:
 1. Data Sources: GeoNOVA, NSTD, NSTIR.
 2. Projection: NAD83 UTM Zone 20 North.

- Legend:**
- Area of Interest
 - Property Boundaries
 - Water Features**
 - Mapped Stream
 - Mapped Indefinite Stream
 - Mapped Wet
 - Mapped Lakes and Rivers
 - Lake & Watercourse 90m Buffer
 - NSDLF Wetland Inventory**
 - Bog or Fen
 - Fen
 - Swamp
 - NSDLF Wetlands 90m Buffer
 - Significant Species & Habitat**
 - Species at Risk Special Management Area
 - Species of Concern (Common Loon)
 - Bald Eagle Nesting Habitat
 - Nesting Habitat 200m Buffer
 - Eagle Nest Nature Reserve
 - Eagle Nest Nature Reserve 200m Buffer

**Ellershouse Wind Farm
 Environmental
 Constraints**



Date: Dec. 2020	Project #: 19-6807
Scale: 1:35,000	Drawing #: 1
Drawn By: M. Marriott	
Checked By: S. Dickey	



From: Katherine Dorey
To: twilagaudet@mikmagrights.com; info@mikmagrights.com
Cc: [Aaron Long](#); [Frank Kuznik](#); [Fielding, Gillian](#)
Subject: Proposed Ellershouse Windfarm Expansion
Date: February 19, 2021 10:35:26 AM
Attachments: [image001.png](#)
[AREA letter to Mi'kmaq Rights Initiative 2021Feb11.pdf](#)
[EWF Existing and Proposed Layout.pdf](#)
[EWF Enviromental Constraints.pdf](#)

CAUTION: This email originated from outside of the organization. Do not click links or open attachments unless you recognize the sender and know the content is safe.

Hello,

My name is Katherine and I work with the Town of Mahone Bay, a municipal partner of the Alternative Resource Energy Authority (AREA). AREA, in partnership with Potentia Renewables Inc. are proposing an expansion of the Ellershouse Windfarm. We are still very early in the development process and have reached out to Annapolis Valley, Glooscap, and Sipekne'katik First Nations with the attached information and are hoping to engage in consultation with these communities closest to the proposed Project and to seek partnership opportunities that may be of interest.

Additionally, we are wondering if there are any First Nation companies, or qualified professionals who may be available to assist on environmental and archaeological studies, and how we might be able to contact them?

Please let us know if you have any questions or concerns and/or we would be happy to set up a virtual meeting to discuss further.

Thank you for your time,

Katherine

Katherine Dorey
Climate and Energy Outreach Coordinator



493 Main Street
PO Box 530
Mahone Bay, NS, B0J 2E0
902-521-4922

www.townofmahonebay.ca

Mi'kmaq Rights Initiative
75 Treaty Trail
Millbrook, NS
B6L 1W3

February 11, 2021

RE: Ellershouse Wind Farm Expansion First Nation Consultation

Dear Mi'kmaq Nations,

The Alternative Resource Energy Authority ("**AREA**") is contacting you today to establish a platform from which to discuss collaboration opportunities associated with the proposed expansion of the Ellershouse Wind Farm ("**EFW**").

Proponent

AREA is a partnership between the Towns of Antigonish, Berwick and Mahone Bay. The towns each operate electric utilities and distribute power to customers within their service areas and, through AREA, own and operate the Ellershouse Wind Farm. The current Ellershouse Windfarm consists of 10 turbines that produce 23.5 MW of energy and located near the community of Ellershouse, Nova Scotia. These 10 turbines were developed and constructed in three phases between 2015 and 2017.

AREA is exploring a site expansion opportunity in preparation for an anticipated Request for Proposal ("**RFP**") from the Province of Nova Scotia in Q1 of 2021 seeking renewable energy projects. If successful in the RFP, the project would then have the opportunity to sign a Power Purchase Agreement.

AREA is a small local, municipally-owned power producer that employs three full time employees. AREA has partnered with Potentia Renewables Inc. ("**PRI**") to increase AREA's capacity to continue exploring this expansion opportunity and to lead the development. www.potentiarenewables.com Development activities include a wind resource assessment, biological, physical, and socio-economic studies for a Class 1 Environmental Assessment and consultation activities on behalf of the project.

PRI, a 100% owned Canadian company, will be the lead investor and operator of the expansion project should it be successful through the RFP and is actively seeking partnership opportunities with First Nation Communities and municipal entities. PRI has a successful history of consulting and partnering with a number of First Nation Communities across Canada and as an example can be demonstrated by the current relationship built with Paul First Nation in Alberta who will be 25% owners of the 113MW Stirling Wind Project.

Project Description

AREA is currently investigating the feasibility of roughly 13 additional turbine locations near the Annapolis Valley First Nation territory, with two preferred turbine locations on reserve land (Please refer to the maps attached for the regional location, current and proposed turbine locations.)

These 13 turbines will produce approximately 65 MW of clean renewable energy to the local grid. Further wind resource data will inform the most efficient turbine locations and technology for the project.

The project location is ideal for wind energy because of the favourable wind resource, a robust electrical grid interconnection and can be effectively integrated with the local community and environment.

The following is the proposed timeline of activities assuming Nova Scotia releases an RFP in Q1 of 2021.

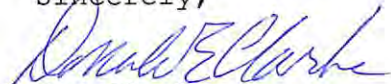
- July 2020: AREA and PRI engage in partnership
- Aug 2020: Meteorological mast installed to measure wind speeds.
- Oct 2020: Fall environmental work initiated, Winter studies to begin in January 2021
- Jan-Sept 2021: Continue environmental field studies.
- Feb 2021: Anticipated RFP Release
- Sept 2021: RFP Successful projects notified
- October 2021: EIA submission and review if bid successful
- Q2 2022: Begin construction
- Q4 2022: Project operation

Consultation

During development of the first phases, Minas Energy, on behalf of AREA, had regular meetings with the local First Nation Communities, Kwilmu'kw Mawklusuaqn Negotiation Office ("KMKNO"), and the Native Council of Nova Scotia. It is our intent to mirror these conversations and engage in meaningful consultation throughout all phases of this proposed expansion, but we would welcome input from all parties on how best to engage in a respectful manner. We are also aware that the Mi'kmahey Forestry Initiative is active near this area and look forward to discussing the project details further to determine how we can work together.

In addition, AREA and our partner, PRI, would be very interested in discussing project employment, turbine siting options and ownership investment opportunities with the Mi'kmaq Communities. If this of interest to your community or if you have any questions or concerns about the proposed expansion, please do not hesitate to reach out. We can be contacted at mayor@berwick.ca or 902-538-8068.

Sincerely,



Don Clark,
Mayor of Berwick
AREA Board Member

EWF Existing and Potential Turbine Expansion Sites

This map shows the existing and proposed turbine layout. Please refer to the second map for more detail on environmental constraints.

- 1-10 represent existing turbines.
- 11-23 represent 13 potential expansion locations.
- 18 & 19 are proposed on the St. Croix First Nation Reserve.

