

**Ellershouse 3 Wind Project**  
*Avifauna - Species at Risk*



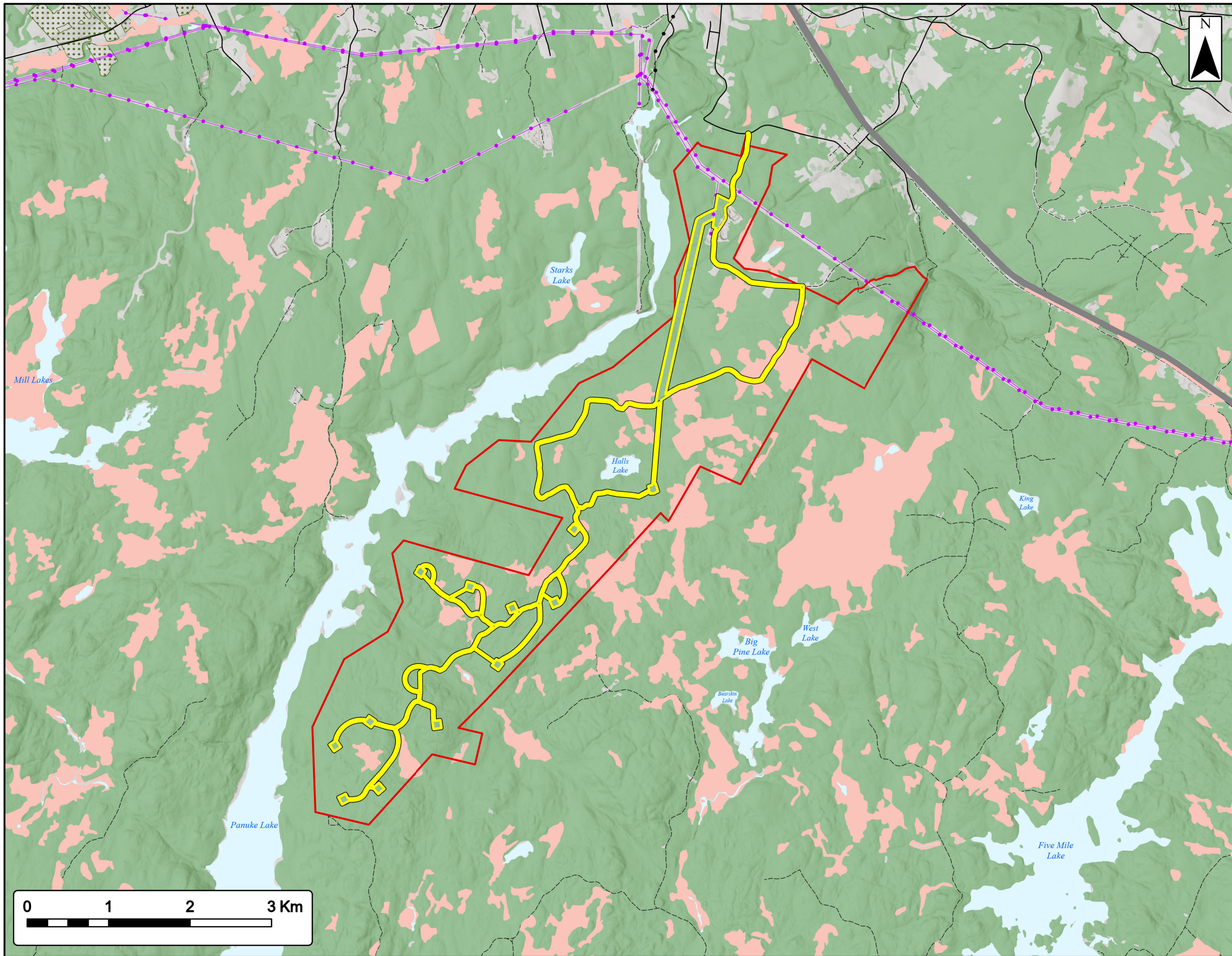
- Study Area
- Assessment Area
- Species at Risk Observation Point
- Transportation**
- Highway
- Road
- Unpaved Road
- Utilities (line)**
- Existing Pipeline
- Existing Transmission Lines
- Water Features**
- Mapped Lakes and Rivers



Coordinate System: NAD83 UTM Zone 20N Sources: ESRI Basemaps, GeoNOVA, NSTD, HERE, Garmin, USGS, NRCAN

Date: May 2023	Project #: 20-7536
Scale: 1:45,000	Drawing #: <b>7.26</b>
Drawn By: P. Opra	<b>7.26</b>
Checked By: S. Dickey	





**Ellershouse 3 Wind Project**  
*Potential Canada Warbler Habitat*

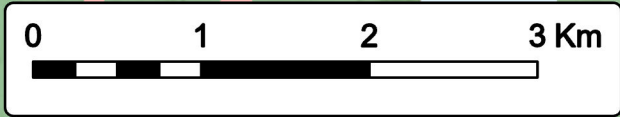


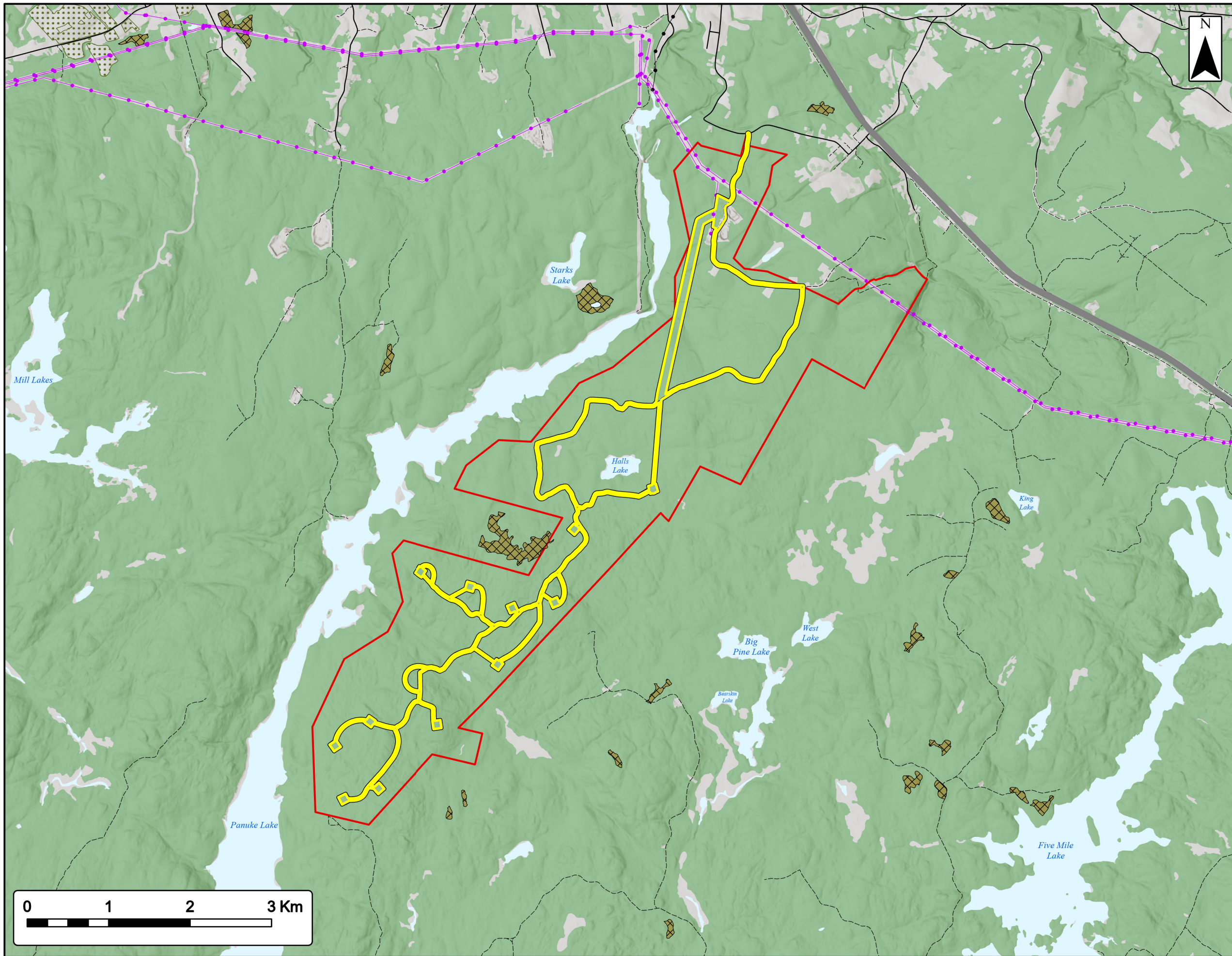
Study Area	
Assessment Area	
Canada Warbler	
<b>Transportation</b>	
Highway	
Road	
Unpaved Road	
<b>Utilities (line)</b>	
Existing Pipeline	
Existing Transmission Lines	
<b>Water Features</b>	
Mapped Lakes and Rivers	



Coordinate System: NAD83 UTM Zone 20N Sources: ESRI Basemaps, GeoNOVA, NSTD, HERE, Garmin, USGS, NRCAN

Date:	May 2023	Project #:	20-7536
Scale:	1:45,000	Drawing #:	<b>7.27A</b>
Drawn By:	P. Opra		
Checked By:	S. Dickey		





# Ellershouse 3 Wind Project

Potential Chimney Swift Habitat

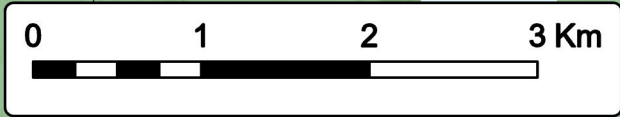


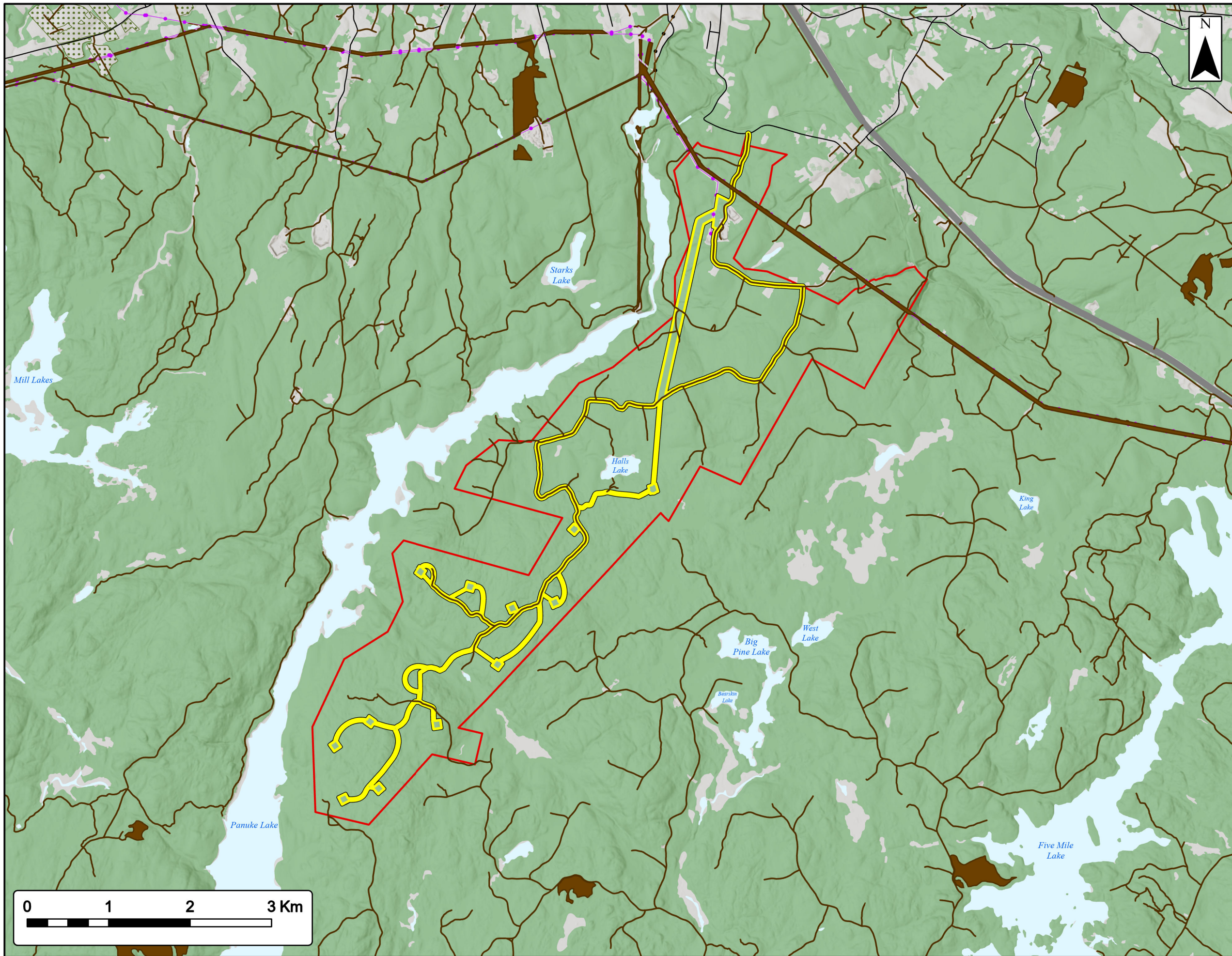
Study Area	
Assessment Area	
Stand Containing Dead Trees	
<b>Transportation</b>	
Highway	
Road	
Unpaved Road	
<b>Utilities (line)</b>	
Existing Pipeline	
Existing Transmission Lines	
<b>Water Features</b>	
Mapped Lakes and Rivers	



Coordinate System: NAD83 UTM Zone 20N Sources: ESRI Basemaps, GeoNOVA, NSTD, HERE, Garmin, USGS, NRCAN

Date:	May 2023	Project #:	20-7536
Scale:	1:45,000	Drawing #:	<b>7.27B</b>
Drawn By:	P. Opra		
Checked By:	S. Dickey		





**Ellershouse 3 Wind Project**  
Common Nighthawk Breeding Habitat



Study Area	
Assessment Area	
Common Nighthawk	
<b>Transportation</b>	
Highway	
Road	
Unpaved Road	
<b>Utilities (line)</b>	
Existing Pipeline	
Existing Transmission Lines	
<b>Water Features</b>	
Mapped Lakes and Rivers	



Coordinate System: NAD83 UTM Zone 20N Sources: ESRI Basemaps, GeoNOVA, NSTD, HERE, Garmin, USGS, NRCAN

Date:	May 2023	Project #:	20-7536
Scale:	1:45,000	Drawing #:	<b>7.27C</b>
Drawn By:	P. Opra		
Checked By:	S. Dickey		

