

**Ellershouse 3 Wind Project**  
Shadow Flicker - Real Case Scenario



Proposed Turbine Locations

Existing Ellershouse Turbines

Non Participating Receptors within 2 km of Assessment Area

2 km Assessment Area Buffer

**Predicted Shadow Hours per Year (Real Case)**

10-30

30-40

40-50

50+

**Transportation**

Highway

Road

Unpaved Road

**Utilities (line)**

Existing Pipeline

Existing Transmission Lines

**Water Features**

Mapped Stream

Mapped Indefinite Stream

Mapped Lakes and Rivers

Mapped Wet Area



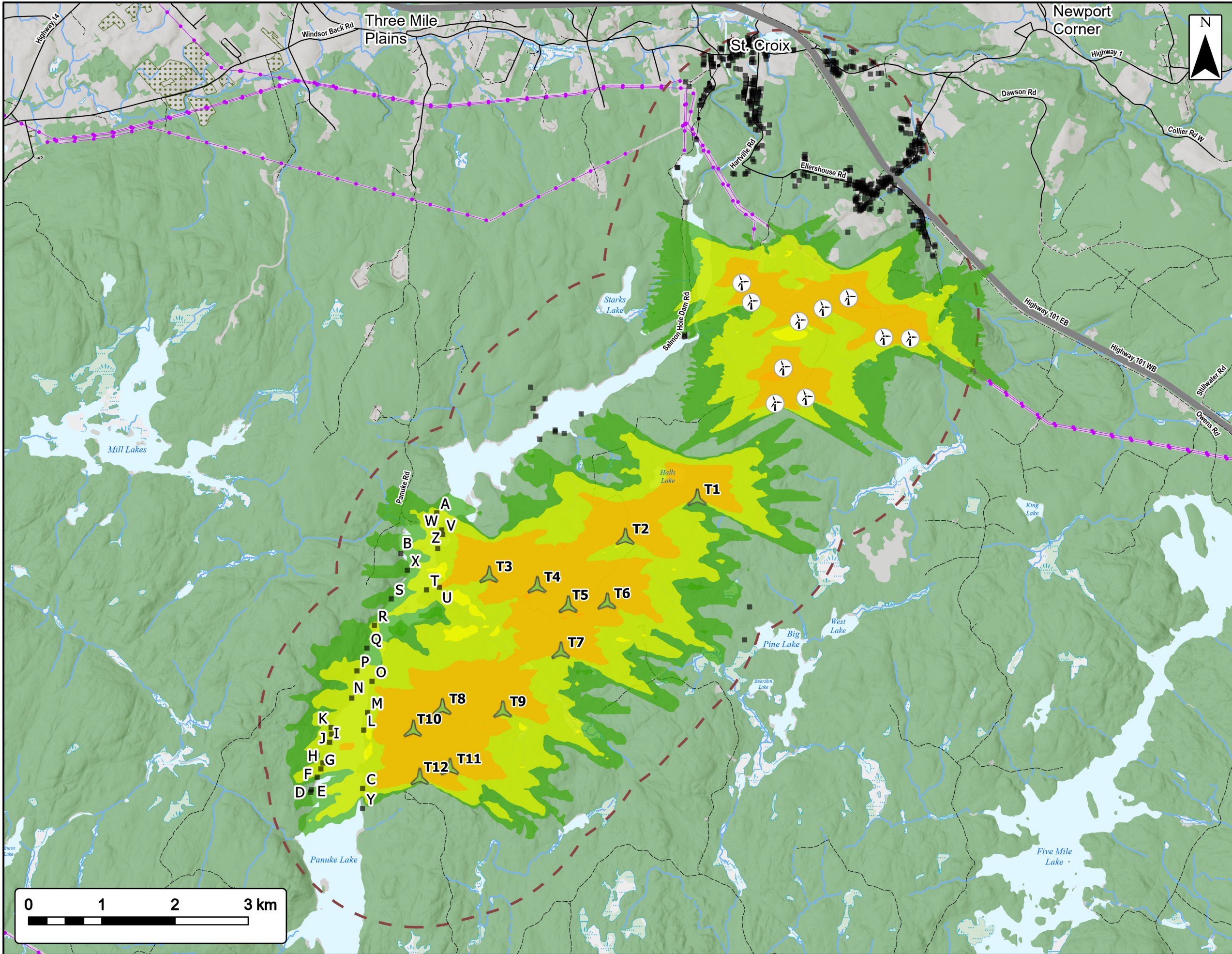
Coordinate System: NAD83 UTM Zone 20N

Sources: ESRI Basemaps, GeoNOVA, NSTD, HERE, Garmin, USGS, NRCAN

Date:	May 2023	Project #:	20-7536
Scale:	1:50,000	Drawing #:	<b>10.1A</b>
Drawn By:	M. Partridge		
Checked By:	M. Savelle		







**Ellershouse 3 Wind Project**  
Shadow Flicker - Theoretical Case

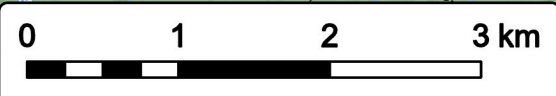


- Proposed Turbine Locations
- Existing Ellershouse Turbines
- Non Participating Receptors within 2 km of Assessment Area
- 2 km Assessment Area Buffer
- Predicted Shadow Hours/Year (Theoretical Case)**
- 10-30
- 30-100
- 100+
- Transportation**
- Highway
- Road
- Unpaved Road
- Utilities (line)**
- Existing Pipeline
- Existing Transmission Lines
- Water Features**
- Mapped Stream
- Mapped Indefinite Stream
- Mapped Lakes and Rivers
- Mapped Wet Area

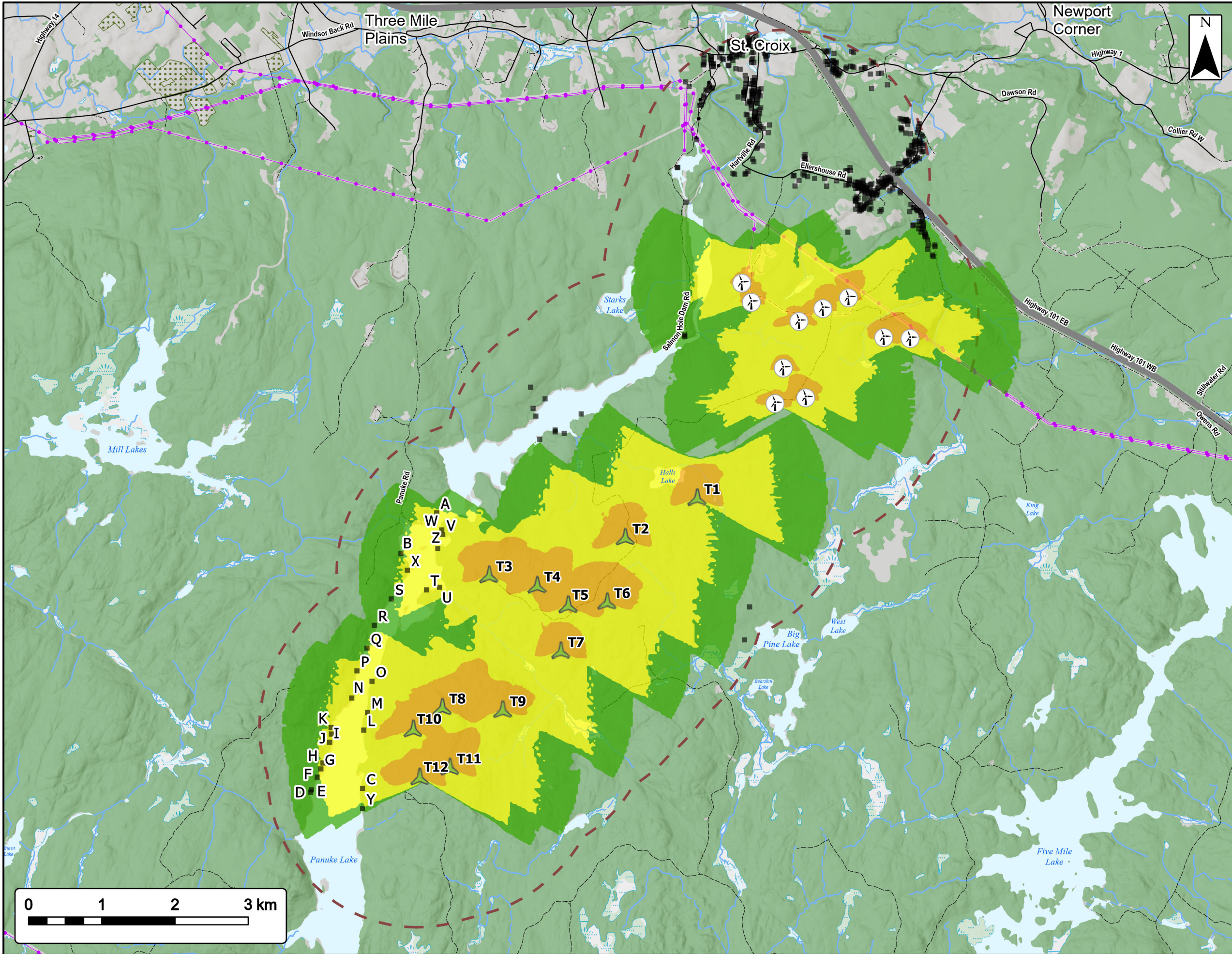


Coordinate System: NAD83 UTM Zone 20N Sources: ESRI Basemaps, GeoNOVA, NSTD, HERE, Garmin, USGS, NRCAN

Date: May 2023	Project #: 20-7536
Scale: 1:50,000	Drawing #: <b>10.1B</b>
Drawn By: M. Partridge	<b>10.1B</b>
Checked By: M. Savelle	







**Ellershouse 3 Wind Project**  
Shadow Flicker - Theoretical Case

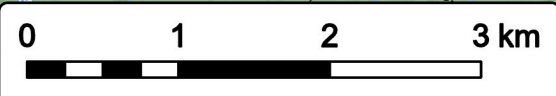


- Proposed Turbine Locations
- Existing Ellershouse Turbines
- Non Participating Receptors within 2 km of Assessment Area
- 2 km Assessment Area Buffer
- Predicted Shadow Minutes/Day (Theoretical Case)**
- 10-30
- 30-100
- 100+
- Transportation**
- Highway
- Road
- Unpaved Road
- Utilities (line)**
- Existing Pipeline
- Existing Transmission Lines
- Water Features**
- Mapped Stream
- Mapped Indefinite Stream
- Mapped Lakes and Rivers
- Mapped Wet Area

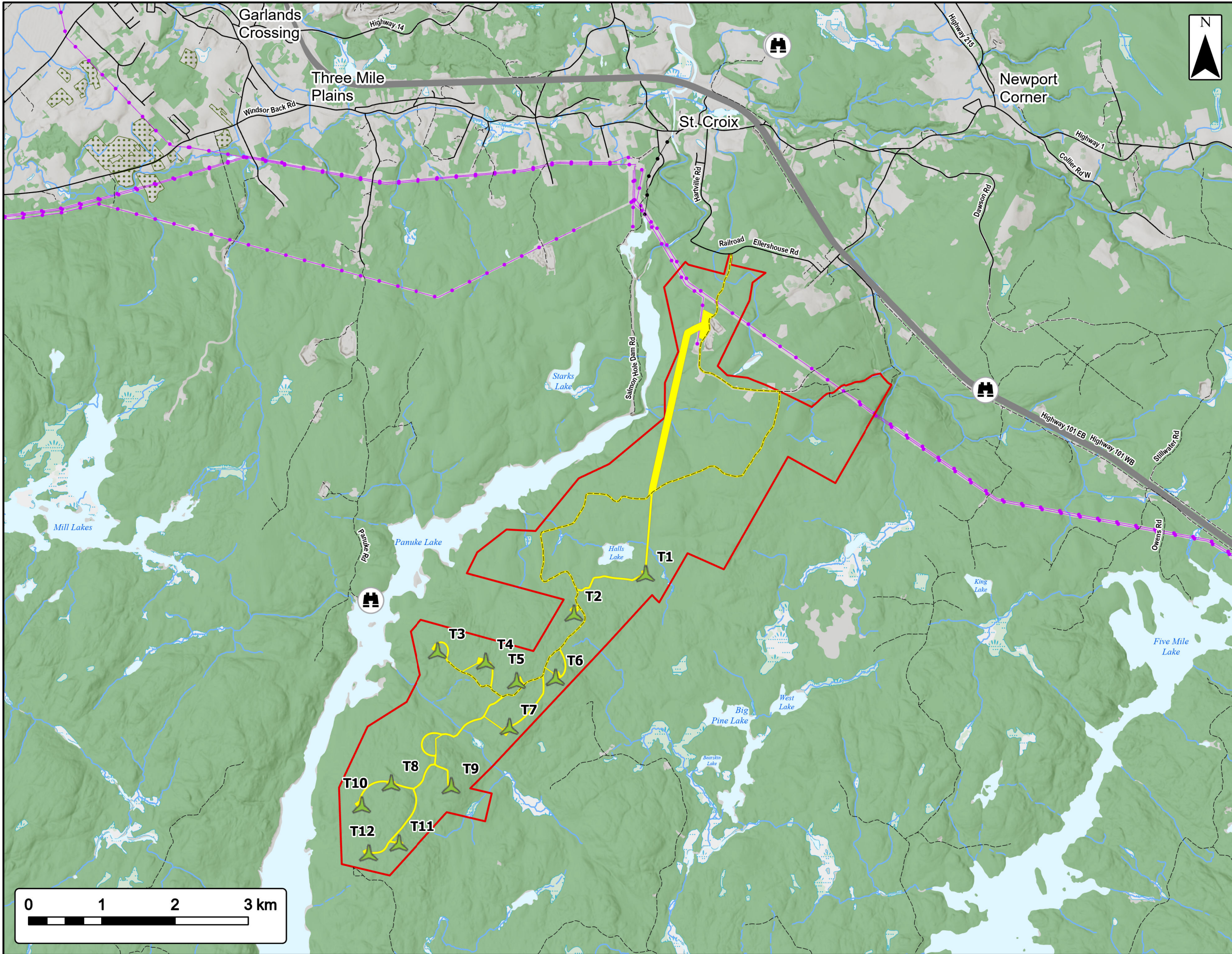


Coordinate System: NAD83 UTM Zone 20N Sources: ESRI Basemaps, GeoNOVA, NSTD, HERE, Garmin, USGS, NRCAN

Date:	May 2023	Project #:	20-7536
Scale:	1:50,000	Drawing #:	10.1C
Drawn By:	M. Partridge		
Checked By:	M. Savelle		







**Ellershouse 3 Wind Project**  
Visual Simulation



- Study Area
- Assessment Area
- Proposed Turbine Locations
- Camera Locations
- Transportation**
- Highway
- Road
- Unpaved Road
- Utilities (line)**
- Existing Pipeline
- Existing Transmission Lines
- Water Features**
- Mapped Stream
- Mapped Indefinite Stream
- Mapped Lakes and Rivers
- Mapped Wet Area



Coordinate System: NAD83 UTM Zone 20N  
Sources: ESRI Basemaps, GeoNOVA, NSTD, HERE, Garmin, USGS, NRCAN

Date: May 2023	Project #: 20-7536
Scale: 1:50,000	Drawing #: <b>10.2A</b>
Drawn By: M. Partridge	<b>10.2A</b>
Checked By: M. Savelle	

