



Ellershouse 3 Wind Project Visual Simulation - West of Panuke Lake

strum
CONSULTING



Date:
May 2023

Project #:
20-7536

Scale:
1:175,000

Drawing #:

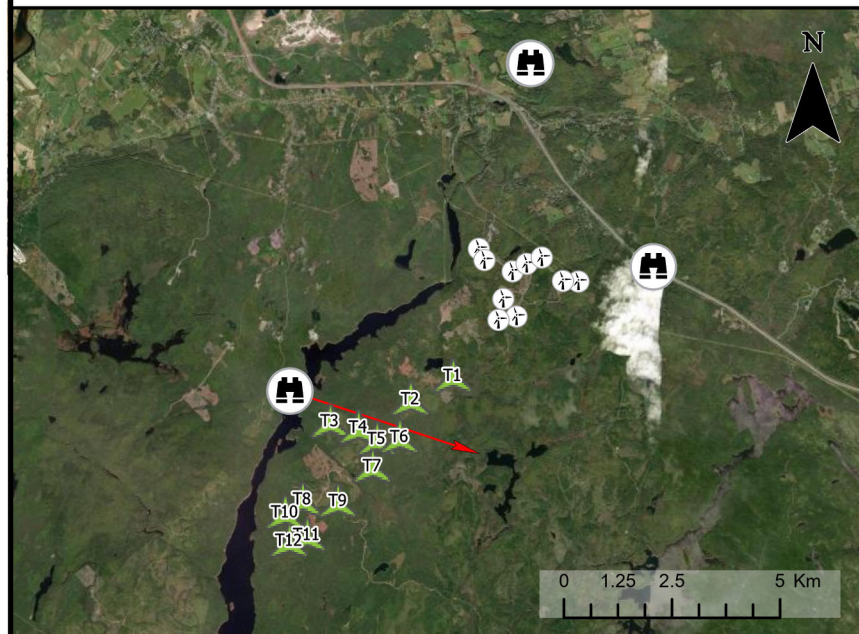
Drawn By:
M. Partridge






10.2B

Checked By:
M. Savelle

TECHNICAL INFORMATION

Visual Simulation Location: West of Panuke Lake
 View Coordinates: Latitude: 44° 54' 13.316" N
 Longitude: 64° 05' 03.366" W
 Easting: 414411 m
 Northing: 4972824 m
 Direction of View: Southeast, Heading 108°
 Camera Make/Model: Canon EOS Rebel T7
 Lens: 50 mm
 Image Resolution: 6000 X 4000
 Weather Conditions: Mostly Clear
 Date of Photo: 2022/10/11
 Time of Photo: 11:36
 Photo Credit: Strum Consulting



- Camera Locations 
- Camera Bearing (108°) 
- Proposed Turbine Locations 
- Existing Ellershouse Turbines 
- Turbines Visible (Proposed) 

Notes:
 Coordinate System: NAD83 UTM Zone 20N
 Sources: ESRI Basemaps, GeoNOVA, NSTD, HERE, Garmin, USGS, NRCan



Ellershouse 3 Wind Project Visual Simulation - West of Panuke Lake

strum
CONSULTING



Date:
May 2023

Project #:
20-7536

Scale:
1:175,000

Drawing #:

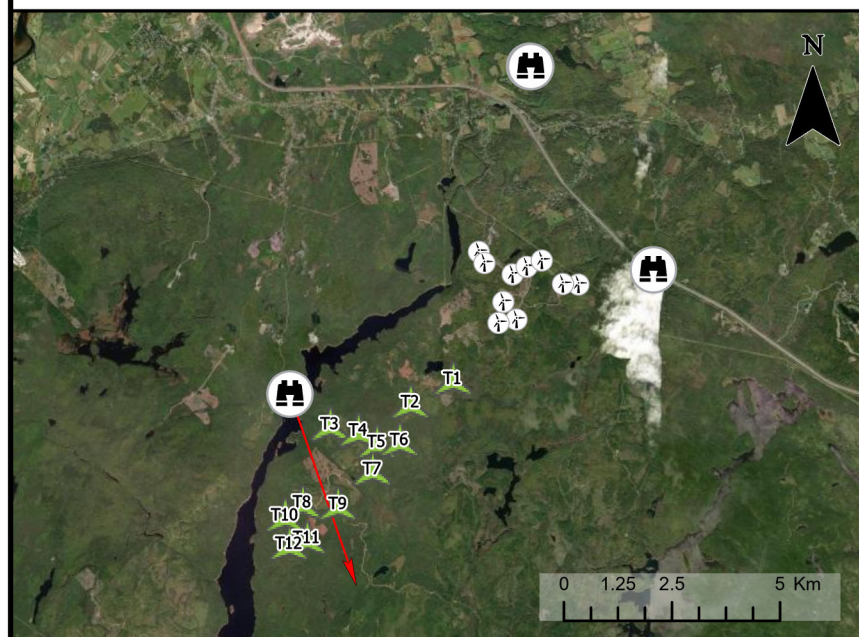
Drawn By:
M. Partridge






10.2C

Checked By:
M. Savelle

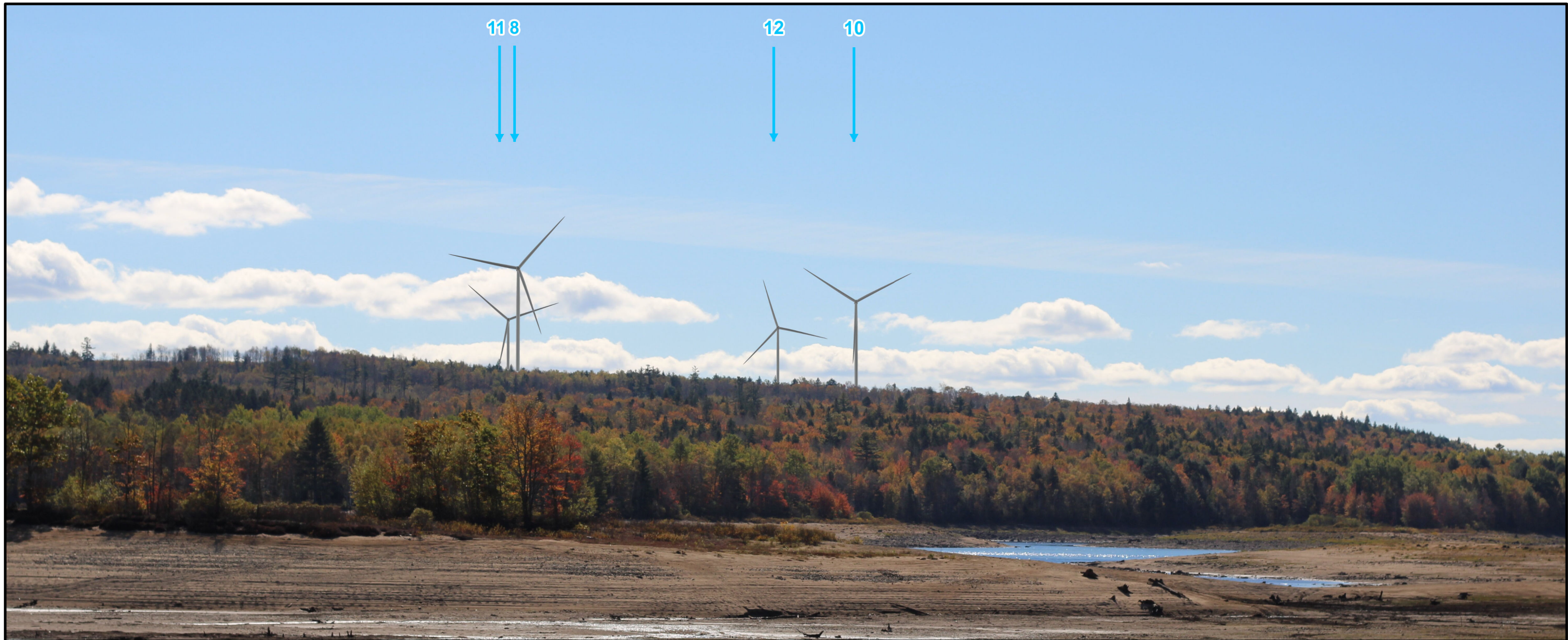
TECHNICAL INFORMATION

Visual Simulation Location: West of Panuke Lake
 View Coordinates: Latitude: 44° 54' 13.316" N
 Longitude: 64° 05' 03.368" W
 Easting: 414411 m
 Northing: 4972824 m
 Direction of View: Southeast, Heading 160°
 Camera Make/Model: Canon EOS Rebel T7
 Lens: 50 mm
 Image Resolution: 6000 X 4000
 Weather Conditions: Partly Cloudy
 Date of Photo: 2022/10/11
 Time of Photo: 11:37
 Photo Credit: Strum Consulting



- Camera Locations 
- Camera Bearing (160°) 
- Proposed Turbine Locations 
- Existing Ellershouse Turbines 
- Turbines Visible (Proposed) 

Notes:
 Coordinate System: NAD83 UTM Zone 20N
 Sources: ESRI Basemaps, GeoNOVA, NSTD, HERE, Garmin, USGS, NRCan



Ellershouse 3 Wind Project Visual Simulation - West of Panuke Lake

strum
CONSULTING



Date:
May 2023

Project #:
20-7536

Scale:
1:175,000

Drawing #:

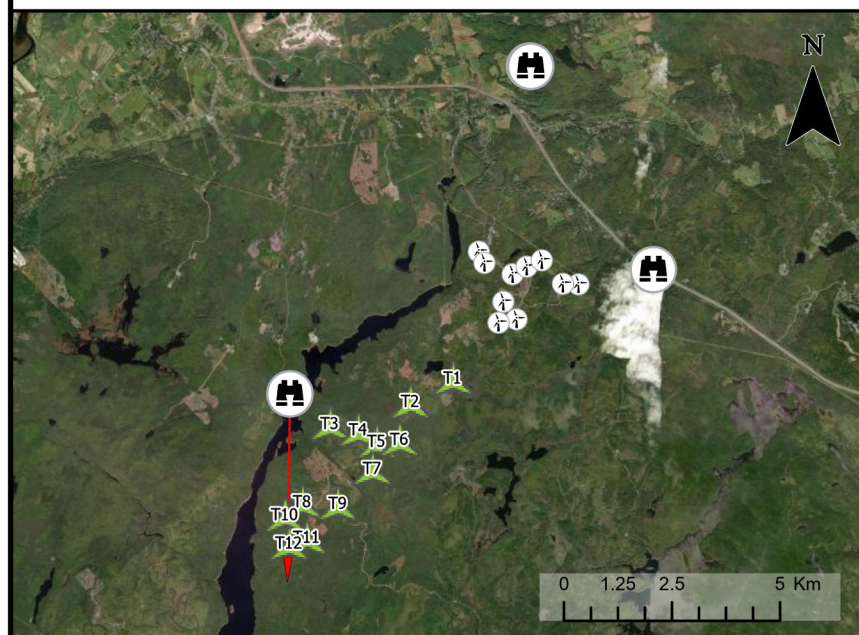
Drawn By:
M. Partridge

10.2D

Checked By:
M. Savelle

TECHNICAL INFORMATION

Visual Simulation Location: West of Panuke Lake
 View Coordinates: Latitude: 44° 54' 13.316" N
 Longitude: 64° 05' 03.368" W
 Easting: 414411 m
 Northing: 4972824 m
 Direction of View: South, Heading 180°
 Camera Make/Model: Canon EOS Rebel T7
 Lens: 50 mm
 Image Resolution: 6000 X 4000
 Weather Conditions: Partly Cloudy
 Date of Photo: 2022/10/11
 Time of Photo: 12:49
 Photo Credit: Strum Consulting



- Camera Locations
- Camera Bearing (180°)
- Proposed Turbine Locations
- Existing Ellershouse Turbines
- Turbines Visible (Proposed)

Notes:
 Coordinate System: NAD83 UTM Zone 20N
 Sources: ESRI Basemaps, GeoNOVA, NSTD, HERE, Garmin, USGS, NRCan



Ellershouse 3 Wind Project Visual Simulation - Roadside of Highway 102

strum
CONSULTING



Date:
May 2023

Project #:
20-7536

Scale:
1:175,000

Drawing #:

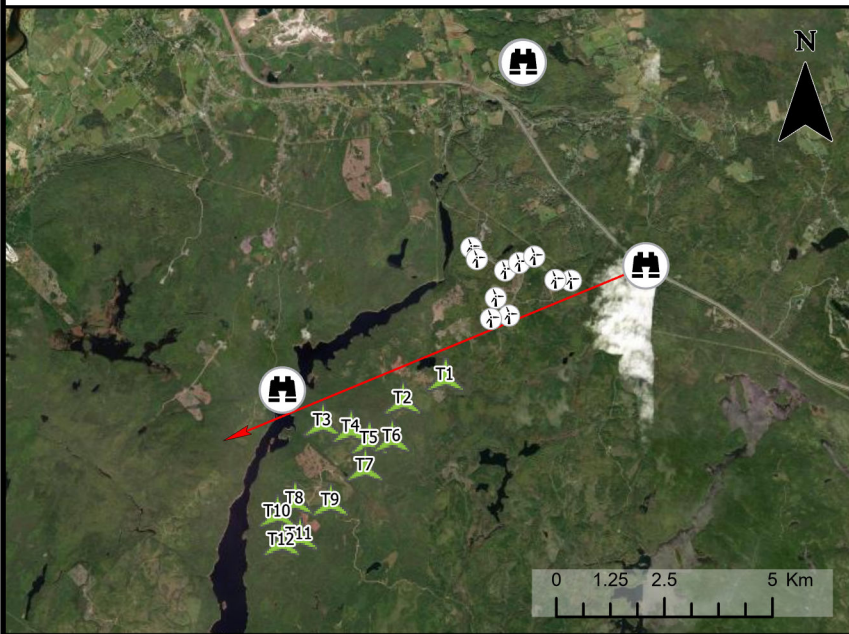
Drawn By:
M. Partridge

10.2E

Checked By:
M. Savelle

TECHNICAL INFORMATION

Visual Simulation Location: Roadside of Highway 102
 View Coordinates: Latitude: 44° 55' 49.922" N
 Longitude: 63° 58' 41.621" W
 Easting: 422808 m
 Northing: 4975699 m
 Direction of View: Southwest, Heading 247°
 Camera Make/Model: Canon EOS Rebel T7
 Lens: 50 mm
 Image Resolution: 6000 X 4000
 Weather Conditions: Mostly Clear
 Date of Photo: 2022/10/11
 Time of Photo: 16:39
 Photo Credit: Strum Consulting



- Camera Locations
- Camera Bearing (247°)
- Proposed Turbine Locations
- Existing Ellershouse Turbines
- Turbines Visible (Proposed)

Notes:
 Coordinate System: NAD83 UTM Zone 20N
 Sources: ESRI Basemaps, GeoNOVA, NSTD, HERE, Garmin, USGS, NRCan